

WEEKLY MASS INTENTIONS

Saturday, October 10
4:00pm SFX Virginia Kintz by Ron & Linda Kintz
6:00pm SG Living & Deceased of Both Parishes

Sunday, October 11—28th Sunday Ordinary Time
8:30 am SFX Steve Mohr by The Blocher Family

10:30 am SG Trudy Keating by John & Jan Keating

Monday, October 12—Columbus Day
8:00am SFX Ellen Harsh

Tuesday, October 13
9:00am SG Bev Deidrich by Darlene Mackey

Wednesday, October 14—St Callistus I
8:00am SFX Mildred Frigyes by the Anguish & Casper Fam.

Thursday, October 15—St. Teresa of Jesus
9:00am SG Mary Jo Casper by Frank & Mary Tuzzio

Friday, October 16—Sts Hedwig & Margaret Mary Alacoque
9:00am SG Communion Service

Saturday, October 17—St Ignatius of Antioch
4:00pm SFX John Zwick by Chris Zwick & Family

6:00pm SG Bob Biggins by Freda Speakman

Sunday, October 18—29th Sunday Ordinary Time
8:30 am SFX Deceased members of the Cinson Family

10:30 am SG Living & Deceased of Both Parishes

CHURCH SUPPORT:

May God bless you for your generosity to our parishes on October 3/4

St. Gabriel: Adult \$2,683; Loose \$63; New Hall \$330; Cap. Impr. \$162; Immaculate Heart Fund \$10; World Missions \$60.

RECAP ADULT COLLETION AT ST GABRIEL

9	Envelopes with \$1 to \$5	\$38
21	Envelopes with \$6 to \$10	\$204
32	Envelopes with \$11 to \$20	\$625
10	Envelopes with \$21 to \$30	\$266
9	Envelopes with \$31 to \$50	\$395
9	Envelopes with OVER \$50	\$1,155
90	Envelopes for St. Gabriel totaling	\$2,683

St. Francis Xavier: Adult \$2,163; Loose \$200; New Hall \$1,076; Bldg. Fund \$117; Immaculate Heart Fund \$10; World Missions \$5.

RECAP ADULT COLLETION AT ST FRANCIS

4	Envelopes with \$1 to \$5	\$15
19	Envelopes with \$6 to \$10	\$98
22	Envelopes with \$11 to \$20	\$406
18	Envelopes with \$21 to \$30	\$469
6	Envelopes with \$31 to \$50	\$245
8	Envelopes with OVER \$50	\$930
77	Envelopes for St. Francis totaling	\$2,163

Thank you! Your kindness is greatly appreciated.

SICK AND SHUT-INS OF THE PARISH

ST. FRANCIS XAVIER

At Home: Gary Kovacik, Mary Ann Campitelli, Carol Sinar
Stone Crossing: Vera Kompara
St. Joseph Care Center: Steve Marmo; Fran Montella (2300-Reno Dr NE, Louisville, OH 44641)

ST. GABRIEL

At Home: Shirley Bonar; Ivette Martinez; Edith Mick.
Eldercare: Alice Gade; Mildred Rennie, Joe Casper (SFX)
Great Trail Nursing (Arbors): Kenny Ferguson; Richard Lane; Kay Morrison
St. Luke Minerva: Stella Kiko; Mary Wadsworth

Prayer Chain for St. Gabriel and St. Francis:

If you know of someone who is in need of prayer and would like them to be put on the prayer list for **St. Francis**, please call Dolores Hudson at 330-863-0273; To be put on the list for **St. Gabriel**, please call Darlene Mackey at 330-868-6639.

FOR ILL & HOSPITALIZED: Please call Parish Office as soon as one is hospitalized, to request home visits and Holy Communion, from either parish. The Eucharistic Ministers are not to make these arrangements. Whenever one is admitted to an area hospital, or nursing care facility please inform the Admissions Office you are Catholic and your Parish. Due to the Privacy of Information Act, hospitals no longer give out personal information.

RCIA RITE OF CHRISTIAN INITIATION OF ADULTS (RCIA)

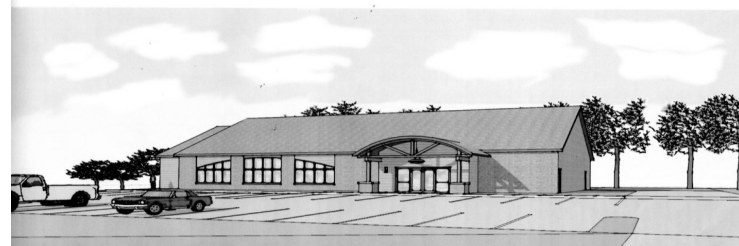
The RCIA is the name we give to the process by which we welcome new members into the church. Our sessions are held on **Monday evenings at 7pm**. Next session: **October 12, 2015 in the Annex classrooms at St. Gabriel** For easier access please use the entrance from the back parking lot, take the alley off of Grant Street, to classrooms. It is not too late to begin our sessions. Please Contact the Parish Office to register and for information, or if other arrangements need to be made due to scheduling. Let us help you to answer your questions.

Jesus said, "Come and See!"

Baptism CONGRATULATIONS: Levi Garrett McKarns infant child of David and Tracy (Worth) McKarns who was baptized this past Sunday at St. Francis Xavier Church. May all of the children grow in faith and learn from our example.

USHERS NEEDED: St. Francis is in need of Ushers to help at the 4pm Mass on Saturday. **"On the job training!" Call Parish Office.**

Office schedule: The Church office will be closed on **Friday, October 23, 2015**



"Come Together, Build Our Future, Leave a Legacy"

Help keep the momentum growing. Support The Pledge Drive Phase for a New "Parish Hall".

"Pledge Drive Target Goal"

94.5% Reached!

Will you help us get to the top?

Offerings as of 09/28/2015:

\$260,397.05 Pledges & Gifts
\$ 38,750.00 Brick and Window sponsorships
\$ 21,000.00 Block sponsorships
\$ 9,908.00 Memorial Donations.
\$330,055.05 [Note: Pledge Goal is \$350,000]



Dear Parishioners, Family Members, Visitors, Friends:

♦We welcome your help. The need is great to replace the Hall at St. Francis. A new Parish Center will benefit both St. Francis and St. Gabriel, as well as our Community. **Thanks. ONLY ***\$19,944.95*** to reach the PLEDGE GOAL! Keep those pledges coming!** This is but one source of income for our project. We will also need to use: (1) the Savings earmarked in our "Building Fund" and, (2) require a bank loan to complete the project. Fund Raisers will be an essential source of income (see note below). **Extra flyers/pledge cards available in the narthex, or by calling Parish Office.**

HELP NEEDED: We are in need of People to give of their time and talent as **VOLUNTEERS** for various **Fund Raising projects in the near future.** The Design Committee met on July14, 2015 and we are instructing the Architect to **continue work on the drawings for the building, interior and exterior, in order for us to make a presentation for the Bishop and Diocese for final approval, to secure a loan, and set a timeline for construction to begin.** This is an exciting time for our parishes. We will have a brochure available soon listing some of the plans we have for fundraising. Please prayerfully consider ways in which **each parishioner may help to make this hall a reality.**



THANK YOU: In the Narthex of St. Francis Church is a thank you note from the children at Malvern Elementary School thanking all who donated for school supplies. Your generosity helped a lot of children attending school this year.

Please Support the 2015 Diocesan Parish Share Campaign (D/PSC)

"Whatever you do in word or deed, do everything in the name of the Lord."

2015 D/PSC	GOAL	AMOUNT PLEDGED & GIFTS	# pledges	% OF GOAL
St. Gabriel	\$23,064	\$33,996	91	147%
# families 318		\$10,932 Over goal	29% response	
St. Francis	\$21,204	\$23,395	86	110%
# families 210		\$2,191 Over goal	41% response	

ALL new gifts/pledges will be returned entirely to the parish for our use and the parish will not be assessed on this amount. This really is the **BEST** way to make a special gift to your parish!

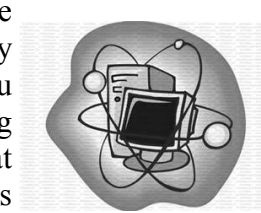
Many from both parishes have already responded very generously with gifts. We invite all those who have not yet had an opportunity, to please do so soon. The success of EACH parish depends upon **YOU!** Help us in **any way you are able.** No gift refused. **God bless you! God bless your generosity! God bless your love!**



IS GOD CALLING YOU TO SHARE YOUR TIME AND TALENT? Both of our parishes are in great need of **Lectors, Special Ministers of the Eucharist** (both at Mass and to shut-ins and/or nursing homes), **Mass Servers, Choir members, Instrumentalists** (keyboard, guitar etc) **Cantors and Ushers.** To respond to God's call, there is a **sign up sheet** available in narthex of either church. Please call Parish Office for information. **The Lord is calling YOU to be of service to our parish communities!**

CHECK OUT OUR NEW WEBSITE:

St. Francis and St. Gabriel now have a new website. It is stgabriel-stfrancis.org. We have a new website so that you may access the bulletin if you are away from home and keep you updated on things that are happening around our parishes. Keep in mind that it is a work in progress, so bear with us as we grow. Check it often to see how it develops!



VOCATION VIEWS: The rich young man desires to live a virtuous life. It requires letting go for what gets in the way of following Jesus wholeheartedly. Are you able to say “yes”? (Mark 10:17-30)

ST. FRANCIS FATHER-SON BREAKFAST:

Please be advised that the Father Son Breakfast at St. Francis Xavier that was scheduled for Sunday, Oct. 18 at 10am in the church hall has been cancelled. Hopefully we will be able to reschedule at another time that will be more convenient.

MARK YOUR CALENDARS NOW! St. Francis CWC is holding a Quarter Auction on Sunday, APRIL 10 2016. We need chairpersons for several aspects of the Auction. Please call Jackie Contini at 330-863-0740 or Jan Prevot at 330-863-0789 if you can help. The Quarter Auction is a wonderful fundraiser for the new church hall. Please help if at all able.

STEWARDSHIP THOUGHT: “It is easier for a camel to pass through the eye of a needle than for one who is rich to enter the kingdom of God.” (Mark10:25)

Jesus uses tough language that we may not want to hear. But, we are all called to be generous with all our gifts. Not just the ones we pick and choose, but all our gifts: our time in prayer to God, our talent in participating in parish ministries and our treasure supporting our local parish and other charities.

THE REMARKABLE SALESMAN

Christopher Columbus was the world’s most remarkable salesman. He started out not knowing where he was going. When he arrived, he didn’t know where he was. And when he returned, he didn’t know where he had been. And he did it all on a big cash advance and he received a repeat order.

DISCIPLESHIP AND WEALTH

Sometimes we get the idea that having material wealth is a bad thing. We may convince ourselves that it is the poor who are favored. In today’s readings, we discover that material wealth alone does not keep us from discipleship. We will see that there are other gifts more important than material wealth, but even so, it is how we use our gifts that matters most.

Today’s scriptures point to the value of the gifts of wisdom, trusting in God, and letting our actions reflect the love of God from within. It is not gold that causes us to fall, but rather the desire for gold above all other things. From the readings in Wisdom and Hebrews, we find the source of God’s gifts in our lives. Wisdom is more valuable than worldly possessions. In Hebrews, we are challenged to look at our own values and admit honestly what controls our lives.

Copyright © J. S. Paluch Co.

JUBILEE YEAR OF MERCY SURVEY

Pope Francis has declared 2016 to be a Jubilee Year of Mercy to begin on December 8, 2015, Feast of the Immaculate Conception. In order to help us prepare for this special year we have enclosed a simple **Survey** in today’s bulletin for all parishioners to complete. Please take a few minutes to respond. Each sheet is designed for the response of up to four people in each household. Return them to the special boxes in the narthex, or to the Parish Office.

ADORATION OF THE BLESSED SACRAMENT SCHEDULE FOR OUR PARISHES:

St. Francis: **Monday** after 8AM Mass until 4:00PM
St. Gabriel: **Tue.** after 9AM Mass until Wed. at 9AM.

ADORATION at SG: Adorer needed for the hours of 8-9pm on Tuesdays. Please call Bill Pilati at 330-868-5794 if you are able to help.

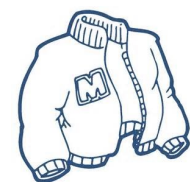
ADORATION at SFX: Thank you to the adorer who volunteered to help at St. Francis. You don’t need to “schedule” a time to come and pray on Monday’s at St. Francis, just simply come and spend some time in quiet prayer any time of the day from 9am—4pm.



WORLD MISSIONS: In 1926, Pope Pius XI instituted World Mission Sunday. He asked for prayer, action, celebration, and offerings for the Missions. His concern was to engender a sense of responsibility in people for supporting the Missions throughout the world.

Please read what Bishop Monforton has to say about World Mission Sunday in the flyer in today’s bulletin. The date of the collection is scheduled for next Sunday, October 17/18. There is an envelope in your envelope packet for this collection. Thank you in advance for donating this special collection.

COATS FOR KIDS: Contributions may be mailed to the Minerva Area Coats for Kids C/o Cathy Viola 207 W. Lincoln Way, Minerva, OH 44657, or can be made directly at Consumers national Bank on E. Lincoln Way in Minerva. Last year 212 coats and accessories were distributed thanks to your generosity.



Thank you for your help with this project.

THAT MAN IS YOU! (TMIY) Saturday from 6am-7:30am at Our Lady of Mercy Hall. Meetings begin with breakfast. For more info: INFO@THATMANISYOU.ORG

ST. GABRIEL

400 West High Street ▪ Minerva, OH 44657

OFFICE ADDRESS: P.O. Box 275 ▪ Minerva, OH 44657

PHONE: 330-868-4498

EMAIL: smstgabriel@frontier.com ▪ **WEBSITE:** stgabriel-stfrancis.org

PASTOR: Fr. Victor Cinson 330-868-4498

SECRETARY: Mrs. Peggy Romine

SOCIAL HALL PHONE: St. Gabriel 330-868-4610
St. Francis 330- 863-0760

OFFICE HOURS:

9am – 5pm Monday - Thursday; 9am—2pm Friday

REGULAR MASS SCHEDULE

Saturday: 4:00pm at St. Francis
6:00pm at St. Gabriel

Sunday: 8:30am at St. Francis
10:30am at St. Gabriel

Weekdays 8:00am Mon. and Wed. at St. Francis
9:00am Tues. and Thurs. at St. Gabriel
9:00am Fri. St. Gabriel Communion Service

[See Weekday Schedule inside for changes & special days.]

Holy Days of Obligation

Vigil (evening before) 7:00pm at St. Francis

Holy Day 9:00am and 7:00 pm at St. Gabriel

CONFESSIONS

Saturday: 2:00 – 2:45pm St. Gabriel
3:15 – 3:45pm St. Francis

Other times by request. [Note: Confessions will be cancelled when there is a wedding at either church. Check weekly bulletin.]

BAPTISMS

Parents are to call the Parish Office to arrange for a preparation meeting. The child need not yet be born to make these arrangements.

MARRIAGES

Couples intending to marry **must** consult the pastor personally at least 6 months prior to the desired date. No date will be set until this meeting takes place.

BULLETIN DEADLINE:

All items must be submitted to the Parish Office **in writing** by **12:00 pm on Tuesday.**



ST. FRANCIS

125 Carrollton Street ▪ Malvern, OH 44644

OFFICE ADDRESS: P.O. Box 275 ▪ Minerva, OH 44657

PHONE: 330-868-4498

EMAIL: smstgabriel@frontier.com ▪ **WEBSITE:** stgabriel-stfrancis.org

TREASURES FROM OUR TRADITION

How did the church dealt with “daily sins” in the first five centuries? As devout and observant as they were, our early fathers and mothers in faith could not have been all that different from us. Maybe they looked the other way when the grocer threw an extra fig in the shopping basket, or had a wandering eye for the widow next door, or had a taste for too much ale, or didn’t let the truth get in the way of a good story. First of all, there was the Eucharist. The words are familiar: “This is the cup of my blood, poured out for the forgiveness of sin.” Especially by participating in Communion from the cup, forgiveness was achieved. Eucharist was, and remains, the sacrament of reconciliation *par excellence*, the sign and source of unity with Christ.

There were other helps along the way: “fraternal” correction, or the course corrections we offer one another in love, prayer, fasting, works of mercy. St. Augustine listed endurance of suffering, forgiveness of insults, and added the praying of the Lord’s Prayer in the liturgy. He felt that the public praying of the Our Father on Sunday and its daily use in private prayer was an essential remedy and the reason why everyone was not a candidate for canonical penance. Inherited from Augustine’s practice, the Lord’s Prayer in our Communion Rite still has the same purpose, preparing us for receiving and becoming the Body of Christ.

—Rev. James Field, Copyright © J. S. Paluch Co.

LOW GLUTEN HOSTS AVAILABLE: We have a special ecclesiastically approved low-gluten(0.01%) host available for any with glucose intolerance (celiac disease). Please inform the ushers **before** Mass begins. Those receiving this special host should come forward in the line in which the priest is distributing the Eucharist.

PARISH SHARE CAMPAIGN. Items needed:

October 17/18 Flour, Sugar & Shortening

October 24/25 Breakfast Bars & Cereal

Please place items in shopping cart in St. Gabriel Hallway, and the marked boxes in the St. Francis coatroom.



TWENTY-EIGHTH SUNDAY ORDINARY TIME ~ OCTOBER 11, 2015