

Best Guard

MODEL

G-70

Grilles provide security, protection and ventilation. Open design allows for 100% visibility to observe what is behind the door when fully closed as well as full ventilation.

LISTINGS

Meets and exceeds visibility code requirements.

SPECIFICATIONS

CURTAIN

A. Construction of curtain is 5/16" steel rods. Aluminum or Plastic covers for rods provided. Aluminum spacers used to assemble rows.

B. Typical spacing is 2.0" vertical opening pattern. For greater security also available in 1.0" vertical hole spacing.

C. Available in straight lattice or brick pattern. Brick pattern doors wider than 5'-0" require a straight link the full height of door to prevent sagging.

D. Lock Protection Rods spaced 1" apart reduce the opening spacing in the section above the cylinder lock to mitigate lock tampering. This will automatically be added to the door if inside thumbturn in lieu of key locking is requested.

OPERATION

- Motor, Chain, Hand-Crank or Push-Up operation available based on size, weight or frequency of operation.

- Battery backup available to ensure operation in the event of power failure or blackout.

MATERIALS & FINISHES

- Typical rod finish is Galvanized steel. Typical sleeve and spacer finish is Mill Aluminum or Clear Anodized.

- Additional options include: White, Black, Bronze, Copper, Galvanized, Stainless Steel, Galvalume, Prime Painted Galvanized & Powder Coated. Plastic rod covers available, consult factory.

GUIDE & TRACK CONFIGURATIONS

- Guides and tracks can be combined in a series of ways to accommodate side-rooms requirements. F-guide, Z-guide, E-guide, Pack-out can be provided either welded or bolted.

- For interior applications behind wall, typical 3 in. x 3 in. steel tubes are used for mounting supports.



BOTTOM BAR

- Bottom Bar options include: Single Angle, Double Angle, Tubular (extruded alum.) or "T" Aluminum bottom bar.

- Bottom Bars have typical Mill Finish. Additional options: Clear Anodized, Brass, Copper, Galvanized, Stainless Steel, Hot Rolled Steel, Powder Coated, Paint.

LOCKING

A. Chain Operation: Wall mounted chain keeper or zinc plated steel slide bolt with padlock provisions.

B. Push-Up or Hand-Crank Operation: Slidelocks, Round Locks or Cylinder Locks for locking at bottom bar (bottom bar design effects locking option available).

C. Motor Operator: No additional locking required as motor has automatic feature to prevent door from being lifted. Additional locking mechanisms include Slidelocks, Round Locks or Cylinder Locks for locking at bottom bar (bottom bar design effects locking option available).

HOODS & COVERS

- Hoods are typically furnished if the coil is exposed. If provided, hoods are typical Steel Galvanized Finish. Additional Finish Options: Brass, Copper, Stainless Steel, Galvalume, Prime Painted, and Powder Coated

- Standard shape is round cover. Options for square or hexagonal hood upon request.

- Additional covers can be provided for all exposed mechanical parts (motors, chain mechanism, etc.) to accommodate for weather intrusion, security protection and aesthetics.

CONTACT US

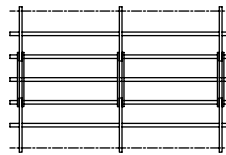
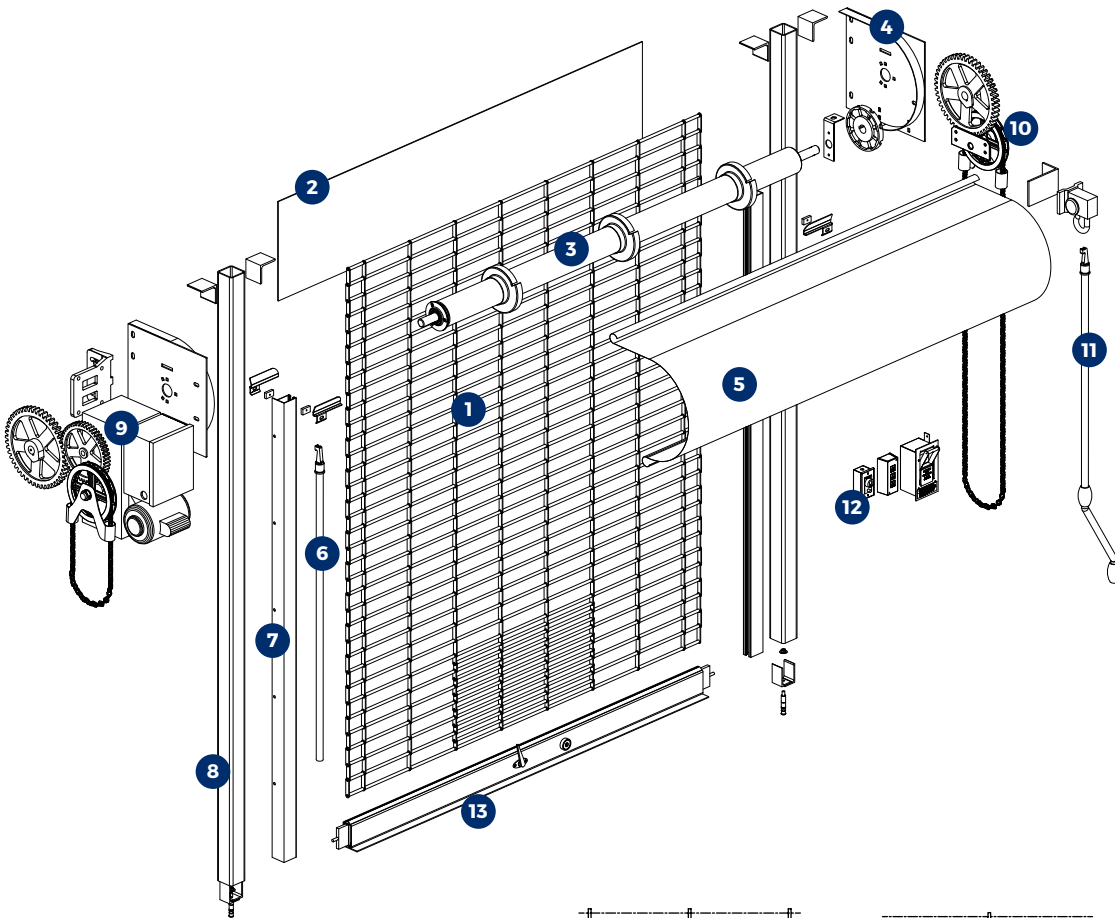
Best Rolling Manufacturer, Inc. P: 305-698-3550
9780 NW 79 Avenue F: 305-698-3552
Hialeah Gardens, FL 33016 www.bestdoor.us

Best Guard

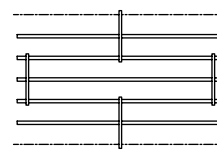
Details - Components Breakdown Model - Coiling Security Grilles

PARTS & ACCESSORIES

COMPONENTS



Straight Lattice



Brick Pattern

COMMON FINISHES

Rods:

Sleeves & Spacers:



Galvanized



Mill



Clear
Anodized



White



Black



Bronze

Consult for availability. Painted and Powder Coated colors available upon request.

1. CURTAIN Typical 2.0" x 9.0" openings. Available in solid or hollow rod.

2. FASCIA Optional for installations with no header to cover exposed coil.

3. TORSION-SPRING PIPE ASSEMBLY

4. HEADPLATE Size varies based on door dimensions.

5. COVER Standard round shape, Supplied when coil is exposed.

6. PUSHUP OPERATION Pull hook provided.

7. GUIDES Additional types and configurations available based on job type.

8. STEEL TUBE SUPPORTS Provided for installation when there is no jamb.

9. MOTOR OPERATION Additional types and configurations available based on job type

10. CHAIN OPERATION Allow for minimum 5.0" sideroom clearance.

11. CRANK OPERATION Allow for minimum 2.0" sideroom clearance.

12. OPERATION ACCESSORIES Additional accessories and finishes available.

13. BOTTOM BAR Additional types, finishes and locking options available.