

# Best Plex

## MODEL

### LEXAN

Polycarbonate enclosed lattice design offers a high-end look with superior construction and quality. Panel inserts are available in polycarbonate or tempered glass that are easily replaced and serviced.

#### LISTINGS

Meets and exceeds visibility code requirements.

## SPECIFICATIONS

### CURTAIN

- Curtain shall be constructed of on center extruded aluminum sections.
- Each section framed by continuous double "C" hinge hold clear polycarbonate or glass panels.

### SLATS

- Panel inserts are 1/16" Polycarbonate. Can be easily replaced by a professional if damaged or scratched.
- Spacers are aluminum extruded.
- Consult factory for smaller slat applications to meet astringently small headroom requirements.

### OPERATION

- Motor, Chain, Hand-Crank or Push-Up operation available based on size, weight or frequency of operation.
- Battery backup available to ensure operation in the event of power failure or blackout.

### MATERIALS & FINISHES

- Curtains have typical exterior aluminum spacer finish in Mill, Clear Anodized, White, Black or Bronze.
- Additional options include: Copper, Galvanized, Stainless Steel, Galvalume, Prime Painted Galvanized & Powder Coated, consult factory for availability.
- Polycarbonate available in transparent clear finish.

### GUIDE & TRACK CONFIGURATIONS

- Guides and tracks can be combined in a series of ways to accommodate side-rooms requirements. F-guide, Z-guide, E-guide, Pack-out can be provided either welded or bolted.
- For interior applications behind wall, typical 3 in. x 3 in. steel tubes are used for mounting supports.



### BOTTOM BAR

- Bottom Bar options include: Single Angle, Double Angle, Tubular (extruded alum.) or "T" Aluminum bottom bar.
- Bottom Bars have typical Mill Finish. Additional options: Clear Anodized, Brass, Copper, Galvanized, Stainless Steel, Hot Rolled Steel, Powder Coated, Paint.

### LOCKING

- A. Chain Operation: Wall mounted chain keeper or zinc plated steel slide bolt with padlock provisions.
- B. Push-Up or Hand-Crank Operation: Slidelocks, Round Locks or Cylinder Locks for locking at bottom bar (bottom bar design effects locking option available).
- C. Motor Operator: No additional locking required as motor has automatic feature to prevent door from being lifted. Additional locking mechanisms include Slidelocks, Round Locks or Cylinder Locks for locking at bottom bar (bottom bar design effects locking option available).

### HOODS & COVERS

- Hoods are typically furnished if the coil is exposed. If provided, hoods are typical Steel Galvanized Finish. Additional Finish Options: Brass, Copper, Stainless Steel, Galvalume, Prime Painted, and Powder Coated
- Standard shape is round cover. Options for square or hexagonal hood upon request.
- Additional covers can be provided for all exposed mechanical parts (motors, chain mechanism, etc.) to accommodate for weather intrusion, security protection and aesthetics.

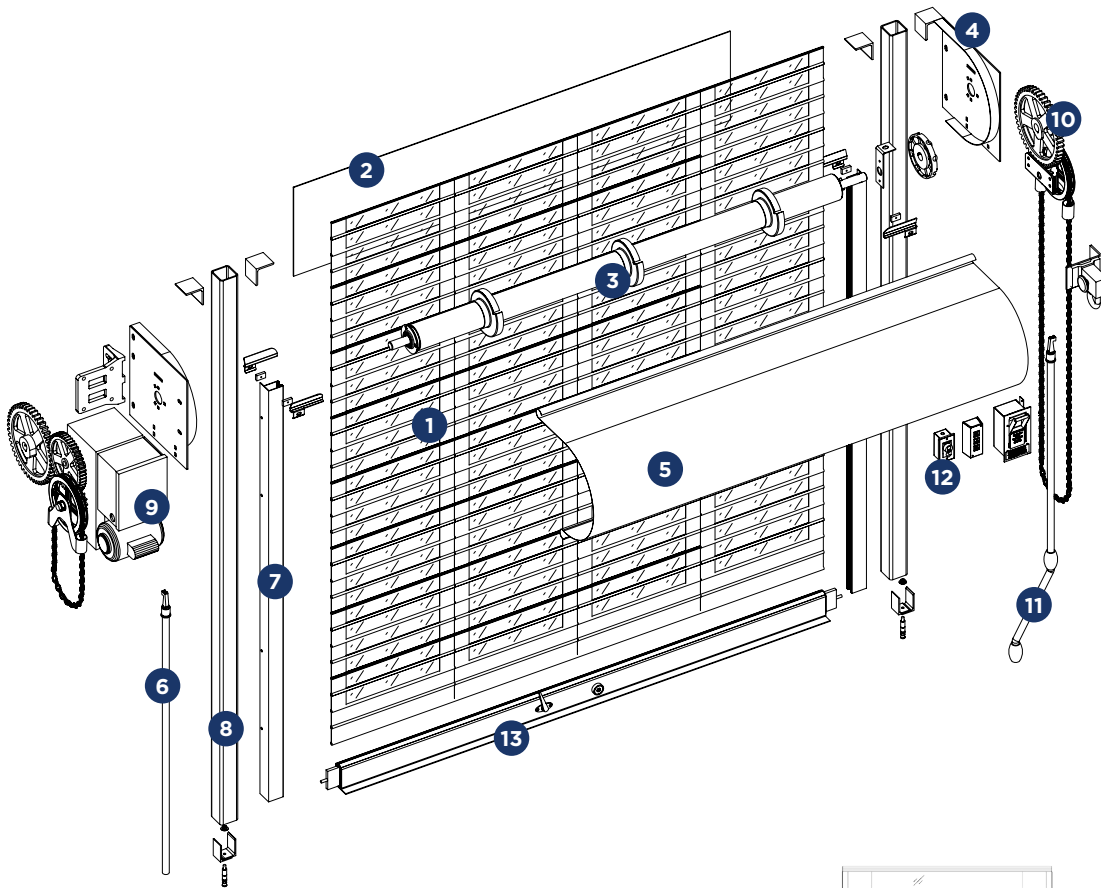
## CONTACT US

Best Rolling Manufacturer, Inc. P: 305-698-3550  
9780 NW 79 Avenue F: 305-698-3552  
Hialeah Gardens, FL 33016 www.bestdoor.us

# Best Plex

## Details - Components Breakdown Model - Lexan

### PARTS & ACCESSORIES



Polycarbonate Panels

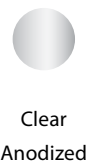
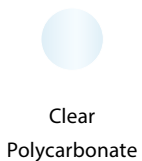
### COMPONENTS

1. CURTAIN Available in Polycarbonate panels.
2. FASCIA Optional for installations with no header to cover exposed coil.
3. TORSION-SPRING PIPE ASSEMBLY
4. HEADPLATE Size varies based on door dimensions.
5. COVER Standard round shape, Supplied when coil is exposed.
6. PUSHUP OPERATION Pull hook provided.
7. GUIDES Additional types and configurations available based on job type.
8. STEEL TUBE SUPPORTS Provided for installation when there is no jamb.
9. MOTOR OPERATION Additional types and configurations available based on job type.
10. CHAIN OPERATION Allow for minimum 5.0" sideroom clearance.
11. CRANK OPERATION Allow for minimum 2.0" sideroom clearance.
12. OPERATION ACCESSORIES Additional accessories and finishes available.
13. BOTTOM BAR Additional types, finishes and locking options available.

### COMMON FINISHES

Panels:

Spacers:



Consult for availability. Painted and Powder Coated colors available upon request.