

Harbor Scenes



PETER LAYNE ARGUIMBAU
The Black Dog Fleet, Vineyard Haven
24 x 36 inches, Oil on board, \$25,000



PETER LAYNE ARGUIMBAU
Corinthian Racing, Newport Harbor
29 x 48 inches, Oil on board, \$45,000



PETER LAYNE ARGUIMBAU
Brooklyn Bridge, NY Harbor
42 x 74 inches, Oil on canvas, \$95,000



PETER LAYNE ARGUIMBAU
Bear Island, Northeast Harbor
30 x 48 inches, Oil on board, \$40,000



PETER LAYNE ARGUIMBAU
Wooden Boats, Brookline Maine
22 x 36 inches, Oil on board, \$28,000



JOSEPH MCGURL
Red Hook, St Thomas
16 x 24 inches, Oil on board, \$16,000



PETER LAYNE ARGUIMBAU
Nellie & Nor'easter, Indian Harbor Classic
24 x 36 inches, Oil on board, \$20,000



PETER LAYNE ARGUIMBAU
Newport Harbor
12 x 22 inches, Oil on board, \$6,500



PETER LAYNE ARGUIMBAU
Edgartown Harbor
20 x 32 inches, Oil on board, \$18,000



PETER LAYNE ARGUIMBAU
Battery Park, Custom House
12 x 20 inches, Oil on board, \$4,500



DAVID MONTEIRO
Fishing off Beavertail Rocks
12 x 9 inches, Oil on canvas, \$1,950



PETER LAYNE ARGUIMBAU
Aquatic Park, San Francisco
16 x 26 inches, Oil on linen, \$8,200



PETER LAYNE ARGUIMBAU
Sumurun to Yield Starboard, Newport
22 x 32 inches, Oil on board, \$18,000



PETER LAYNE ARGUIMBAU
NY 30s off Castle Hill
19 x 26 inches, Oil on board, \$12,000



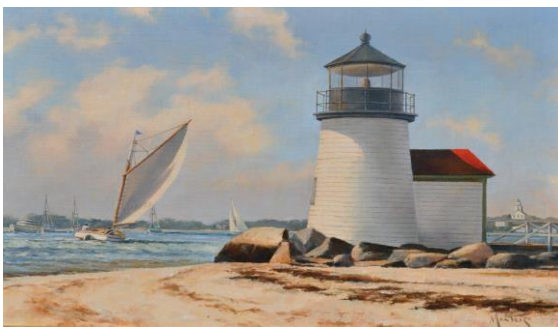
PETER LAYNE ARGUIMBAU
Tall Ships off Governor's Island, 1986
28 x 48 inches, Oil on canvas, \$34,000



PETER LAYNE ARGUIMBAU
Pioneer Sets Sail
16 x 24 inches, Oil on board, \$14,000



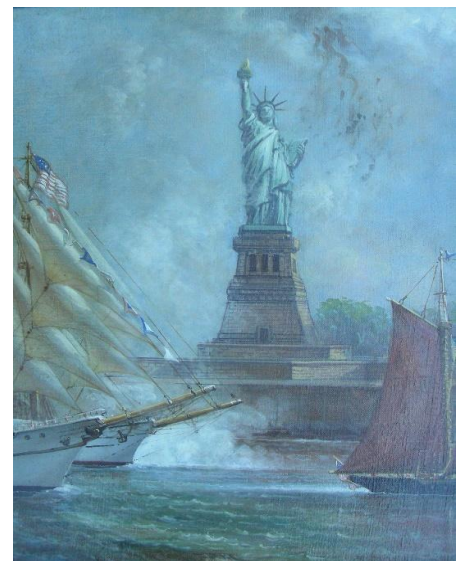
PETER LAYNE ARGUIMBAU
Whaler Morningstar in New Bedford, MA
20 x 24 inches, Oil on board, \$11,500



DAVID MONTEIRO
Brant Point Lighthouse
12 x 16 inches, Oil on canvas, \$3,800



PETER LAYNE ARGUIMBAU
Greenwich Harbor from Riverside
8 x 24 inches, Oil on board, \$3,800



PETER LAYNE ARGUIMBAU
Tall Ships Parade, 2000
18 x 24 inches, Oil on canvas, \$7,500



PETER LAYNE ARGUIMBAU
Drunken Sailors
14 x 26 inches, Oil on board, \$5,800



PETER LAYNE ARGUIMBAU
Baliey's Beach, Newport
6 x 18 inches, Oil on board, \$1,800



PETER LAYNE ARGUIMBAU
Moonlight, South Street Seaport, NY
24 x 30 inches, Oil on board, \$24,000



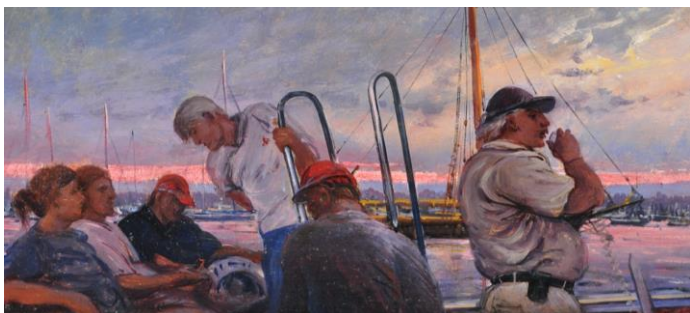
PETER LAYNE ARGUIMBAU
The Cloisters
14 x 24 inches, Oil on board \$4,500



PETER LAYNE ARGUIMBAU
Moonlight over South Street Seaport, NY
14 x 18 inches, Oil on board, \$6,500



PETER LAYNE ARGUIMBAU
Oliver Hazard Perry, Portland, ME
20 x 32 inches, Oil on board, \$18,000



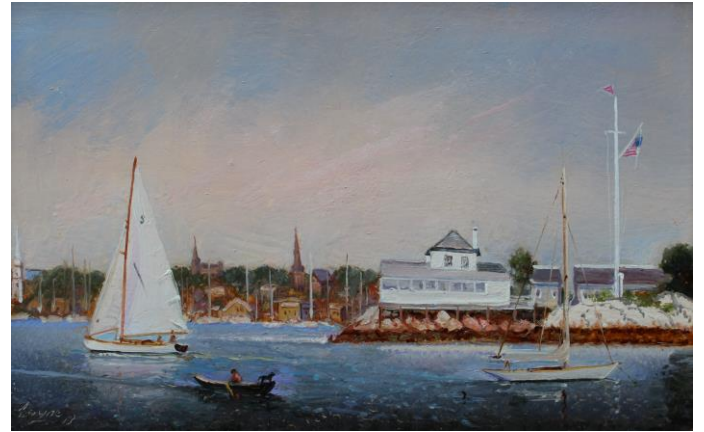
PETER LAYNE ARGUIMBAU
Launch at Sunset
14 x 24, Oil on board, \$5,800



PETER LAYNE ARGUIMBAU
Sunset over Ziegler's Cove
14 x 22 inches, Oil on board, \$4,500



PETER LAYNE ARGUIMBAU
Brant Point, Nantucket
16 x 29 inches, Oil on board, \$9,500



PETER LAYNE ARGUIMBAU
Ida Lewis Yacht Club, Newport
15 x 10 inches, Oil on canvas, \$3,200



PETER LAYNE ARGUIMBAU
Ida Lewis at Sunset
16 x 24 inches, Oil on board, \$12,000



PETER LAYNE ARGUIMBAU
Grand Canal, Venice
10 x 6½ inches, Oil on board, \$1,500



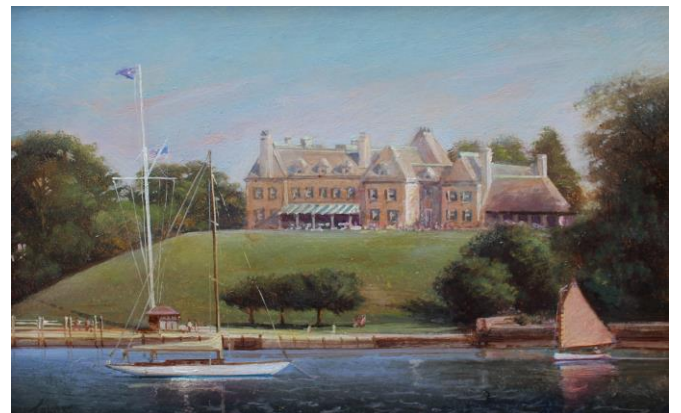
PETER LAYNE ARGUIMBAU
Oyster Bay, NY
6 x 12 inches, Oil on board, \$1,200



PETER LAYNE ARGUIMBAU
Ziegler's Cove, Darien
6 x 10 inches, Oil on board, \$1,200



PETER LAYNE ARGUIMBAU
Providence Harbor
10 x 16 inches, Oil on board, \$2,800



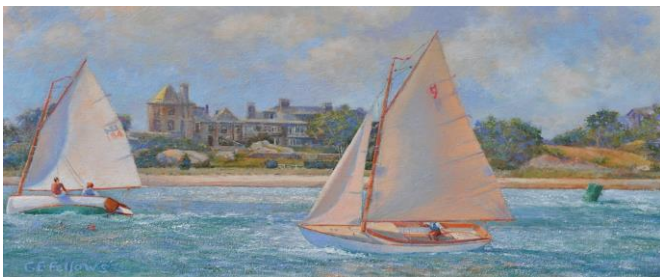
PETER LAYNE ARGUIMBAU
Harbor Court
15 x 12 inches, Oil on board, \$3,500



PETER LAYNE ARGUIMBAU
Statue of Liberty & Pride of Baltimore
24 x 20 inches, Oil on board, \$9,500



PETER LAYNE ARGUIMBAU
Tall Ship Screen
80 x 60 inches (3 panels), Oil on board, \$32,000



GERALD FELLOWS
Tacking Against the Tide, Westport, MA
10 x 20 inches, Oil on canvas, \$3,500



PETER LAYNE ARGUIMBAU
Juan Sebastián Elcano
10 x 18 inches, Oil on board, \$4,200



PETER LAYNE ARGUIMBAU
Sagres II, New York Tall Ships 1986
10 x 16 inches, Oil on board, \$3,500



PETER LAYNE ARGUIMBAU
Governors Island
7 x 10 inches, Oil on board, \$1,200

Marines



JAMES E. BUTTERSWORTH (British-American, 1817 -1894)
Cornelia and Magic Rounding Buoy 8-1/2, 1874
22 1/4 x 34 inches, Oil on canvas, POR



PETER LAYNE ARGUIMBAU
USS Constitution vs. HMS Java, 1812
22 x 36 inches, Oil on board, \$40,000



RICHARD LOUD
A Close Start, Long Island Sound, c. 1934
25 x 16 inches, Oil on canvas, \$8,400



JOHN MECRAY (American, 1936-2017)
USS Constitution Under Full Sail
26 x 34 inches, Oil on board, \$35,000



JOSEPH B. SMITH (American, 1798-1876)
The Sloop Yacht Rebecca off New York, c. 1857
30 x 44 inches, Oil on canvas, \$36,000



PETER LAYNE ARGUIMBAU
Endeavor leads Shamrock
24 x 30 inches, Oil on board, \$18,000



DAVID MONTEIRO
Downwind at the Turn
18 x 24 inches, Oil on linen, \$6,200



RICHARD LOUD
Gloucestermen at Sea
Oil on canvas, 14 x 26 inches, \$7,800



PETER LAYNE ARGUIMBAU
Classic Catboats Racing
20 x 30 inches, Oil on board, \$18,000



PETER LAYNE ARGUIMBAU
Dory at Dawn
Oil on board, 20 x 25 inches, \$12,000



DAVID MONTEIRO
Rounding Gay Head Lighthouse
14 x 20 inches, Oil on canvas, \$5,500



PETER LAYNE ARGUIMBAU
America's Cup, 1883: Vigilant and Valkyrie II
24 x 35 inches, Oil on board, \$22,000



PETER LAYNE ARGUIMBAU
Beetle Cat
11 x 14 inches, Oil on board, \$3,200



PETER LAYNE ARGUIMBAU
Maine Schooner, Penobscot Bay
10 x 22 inches, Oil on board, \$5,000



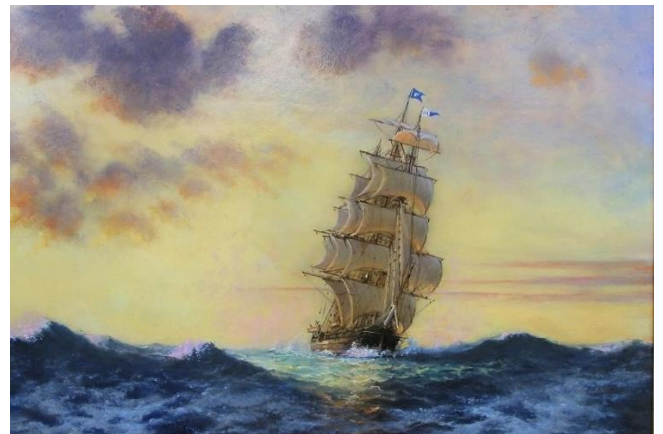
PETER LAYNE ARGUIMBAU
Eggemoggin Reach Classic Regatta
24 x 30 inches, Oil on board, \$24,000



PETER LAYNE ARGUIMBAU
Velsheda & Ranger, Antigua Classic
30 x 40 inches, Oil on board, \$30,000



PETER LAYNE ARGUIMBAU
Cross Tacks
10 x 16 inches, Oil on board, \$4,200



PETER LAYNE ARGUIMBAU
Charles W. Morgan
30 x 40 inches, Oil on board, \$30,000



ANTONIO JACOBSEN (American-Danish, 1850 – 1921)
SS Vaderland, 1909
30 x 48 inches, Oil on canvas, \$9,000



GERALD FELLOWS
Off Cuttyhunk
14 x 20 inches, Oil on canvas, \$6,800



PETER LAYNE ARGUIMBAU
Adix Leads Mariette, 150th America's Cup Jubilee
6 x 12 inches, Oil on board, \$2,000



PETER LAYNE ARGUIMBAU
Molly Rose off Round Hill Point, MA
8 x 18 inches, Oil on board, \$2,800



PETER LAYNE ARGUIMBAU
Moonlight Sail, Friendship Sloop
24 x 20 inches, Oil on canvas, \$10,000



PETER LAYNE ARGUIMBAU
Tall Class
24 x 36 inches, Oil on board, \$25,000



GERALD FELLOWS
Americas Cup Trials
20 x 30 inches, Oil on canvas, \$10,500



LAURA COOPER
Passing Squall
15 x 22 inches, Oil on canvas, \$6,800



PETER LAYNE ARGUIMBAU
America's Cup Jubilee, 150th Anniversary
12 x 20 inches, Oil on board, \$4,000



PETER LAYNE ARGUIMBAU
America's Cup Downwind
30 x 40 inches, Oil on board, \$30,000



PETER LAYNE ARGUIMBAU
Gaff Class
22 x 44 inches, Oil on board, \$19,500



PETER LAYNE ARGUIMBAU
Carvel Rock, Virgin Islands
28 x 18 inches, Oil on board, \$18,500



JOHN MECRAY (American, 1936-2017)
The Schooner Yacht America, 1976
23 x 32 1/2 inches, Oil on canvas, \$80,000



PETER LAYNE ARGUIMBAU
Side by Side in the Night
24 x 36 inches, Oil on board, \$24,000



PETER LAYNE ARGUIMBAU
America's Cup Match Racing
40 x 50 inches, Oil on board, \$38,000



PETER LAYNE ARGUIMBAU
Gloucester Schooners
28 x 36 inches, Oil on board, \$19,500



HAROLD WYLLIE (British, 1880-1975)
Shamrock V & Enterprise, America's Cup
28 x 36 inches, Oil on canvas, \$40,000



PETER LAYNE ARGUIMBAU
A Close Tack
10 x 16 inches, Oil on board, \$4,500



PETER LAYNE ARGUIMBAU
Ernestina
24 x 30 inches, Oil on board, \$14,000



PETER LAYNE ARGUIMBAU
Ticonderoga
9 x 11 inches, Oil on board, \$3,800



PETER LAYNE ARGUIMBAU
Lion's Whelp
18 x 24 inches, Oil on board, \$7,500



PETER LAYNE ARGUIMBAU
Upwind Leg
11 x 15 inches, Oil on board, \$4,800



DAVID MONTEIRO
Beavertail, Jamestown
16 x 24 inches, Oil on canvas, \$5,800



PETER LAYNE ARGUIMBAU
Clipper of the Seas
30 x 40 inches, Oil on board, \$24,000



PETER LAYNE ARGUIMBAU
Sumurun leads Mariella and Black Watch
12 x 16 inches, Oil on board, \$4,500

Seascapes



MONTAGUE DAWSON (British, 1890-1973)
The Night Ferry
30 x 50 inches, Oil on canvas, \$75,000



PETER LAYNE ARGUIMBAU
Crepuscular Rays
22 x 30 inches, Oil on board, \$8,000



PETER LAYNE ARGUIMBAU
Misquamicut, Watch Hill, RI
Oil on board, 44 x 72 inches, \$50,000



PETER LAYNE ARGUIMBAU
Coastal Breakers, Dawn
5 x 15 inches, Oil on board, \$1,200



PETER LAYNE ARGUIMBAU
Italian Seascapes
8 x 16 inches, Oil on linen, \$4,000 for pair



PETER LAYNE ARGUIMBAU
The Wave
24 x 46 inches, Oil on linen, \$42,000



PETER LAYNE ARGUIMBAU
El Mar
24 x 36 inches, Oil on board, \$15,000

Landscapes



PETER LAYNE ARGUIMBAU
Polpis Barn, Nantucket
24 x 36 inches, Oil on board, \$14,000



PETER LAYNE ARGUIMBAU
Westport, MA
20 x 30 inches, Oil on board, \$8,500



PETER LAYNE ARGUIMBAU
Vineyard Surfcaster
20 x 40 inches, Oil on board, \$18,000



PETER LAYNE ARGUIMBAU
Black Dog, Vineyard Haven
23 x 33 inches, Oil on board, \$25,000



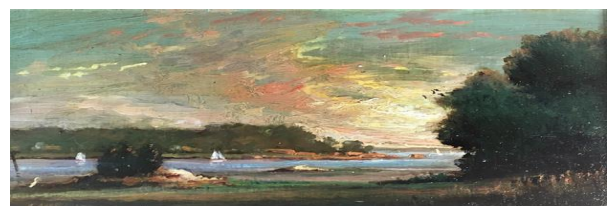
PETER LAYNE ARGUIMBAU
Beach Day, Nantucket
24 x 30 inches, Oil on board, \$10,500



PETER LAYNE ARGUIMBAU
Nonquitt South Beach
18 x 26 inches, Oil on board, \$11,500



PETER LAYNE ARGUIMBAU
Pumpkin Island Light, Maine
8 x 15 inches, Oil on board, \$2,200



PETER LAYNE ARGUIMBAU
Calming Skies
8 x 16 inches, Oil on board, \$1,500



PETER LAYNE ARGUIMBAU
Mallards, Long Island
28 x 35 inches, Oil on board, \$10,000



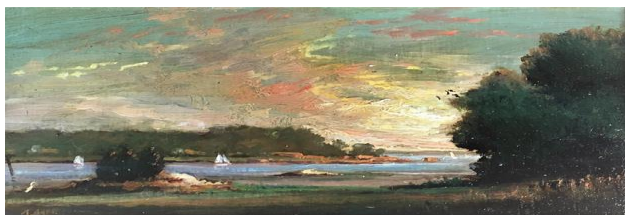
PETER LAYNE ARGUIMBAU
Catboat on Mooring
8 x 16 inches, Oil on board, \$2,400



PETER LAYNE ARGUIMBAU
Molly Rose off Martha's Vineyard
9 x 25 inches, Oil on board, \$2,800



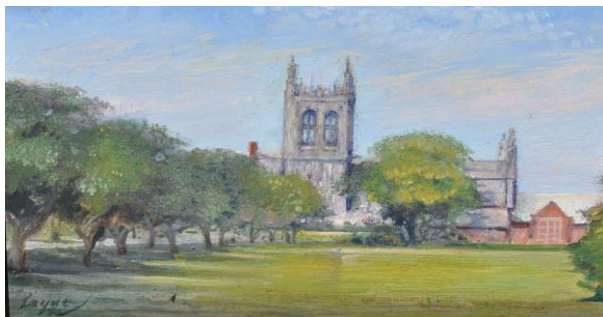
PETER LAYNE ARGUIMBAU
Camden Hills
10 x 20 inches, Oil on board, \$3,500



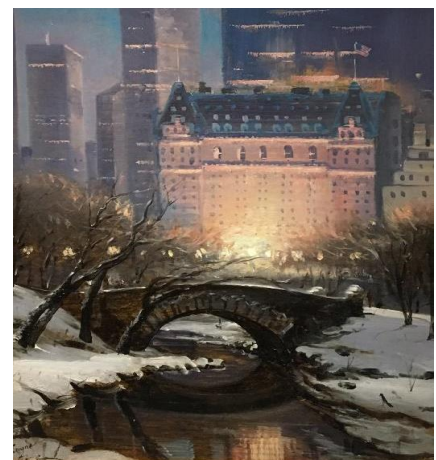
PETER LAYNE ARGUIMBAU
Calming Skies
8 x 16 inches, Oil on board, \$1,500



PETER LAYNE ARGUIMBAU
Venice
20 x 24 inches, Oil on board, \$12,000



PETER LAYNE ARGUIMBAU
St. George's School
8 x 12 inches, Oil on board, \$2,400



PETER LAYNE ARGUIMBAU
The Plaza, Central Park
20 x 16 inches, Oil on board, \$7,500

Portraits



PETER LAYNE ARGUIMBAU
George Washington
8 x 16 inches, Oil on board, \$14,000



PETER LAYNE ARGUIMBAU
Commander, Oliver Hazard Perry
20 x 16 inches, Oil on board, \$7,500



PETER LAYNE ARGUIMBAU
Commander, Thomas MacDonough
12 x 10 inches, Oil on board, \$3,500



RICHARD LOUD
Top of the Dune
12 x 10 inches, Oil on canvas, \$3,500



PETER LAYNE ARGUIMBAU
New Glory
28 x 50 inches, Oil on board, \$32,000

Models & Woodwork



JOSEPH SEELA (American, 1929-2016)
Model of the Schooner Yacht America 1/4" scale
Case: 42 1/2 L x 12 D x 33 H inches, \$18,000



EDWARD BURGESS, Designer
Model of the Schooner Yacht Marguerite, 1888
12 1/2 x 60 inches, \$8,000



M/Y Corsair, 1890, J. Beavor Webb
Case: 51 L x 14 D x 30 H inches, \$6,200



S/Y Atlantic, 1903, Townsend & Downey
Case: 34 L x 10 D x 27 H inches, \$3,950



JP SHEPARD
20 L x 8 D x 21 H inches, \$2,500



S/Y Endeavour, 1934, Camper & Nicholson
Case: 35 L x 14 D x 38 H inches, \$5,400



SUNNY WOOD
90 L x 35 H inches, \$16,500

401.236.2454

marinergallery.com

Frames

