



# LADYBIRD

for Coating Inspection

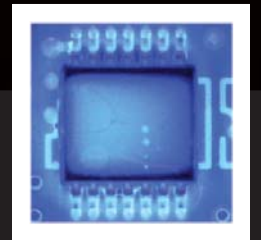
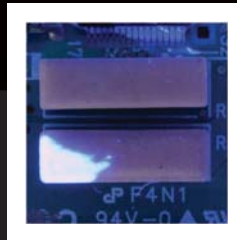
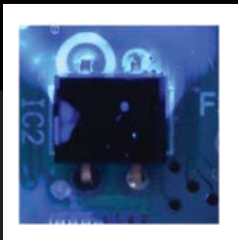
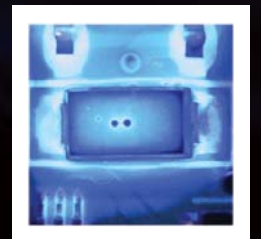
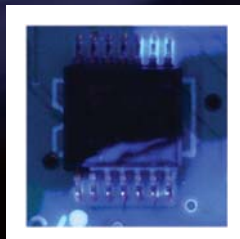
LADYBIRD and Black Light to replace the visual inspection

## Inspection Items

— No Coating —

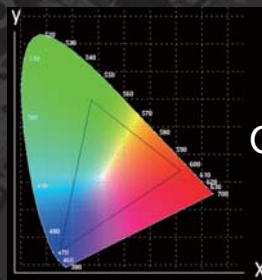
— Excess Coating —

— Buble —



## Determination of the coating color

Coating Color



Other Colors

Coating Color



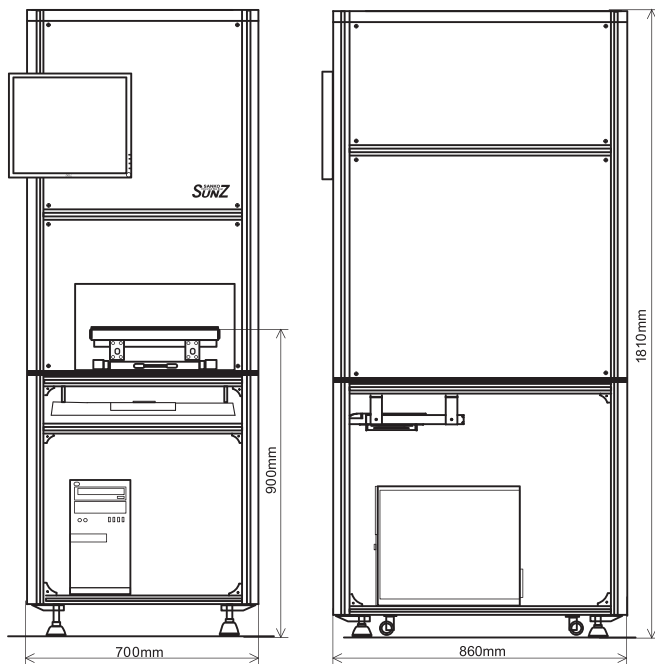
Similar Colors

Fuzzical Z Logic is best for the Coating inspection.

This logic can even determine the similar colors.

# Specifications

## Dimension outline Offline model



## Inspected board specifications

Board size	50mm × 50mm to 250mm × 330mm
Board thickness	0.5 to 2.0mm
Board warpages	3mm or less
Height of parts(bottom)	80 mm or less, customization possible
Height of parts(top)	70 mm or less

## Inspection specifications

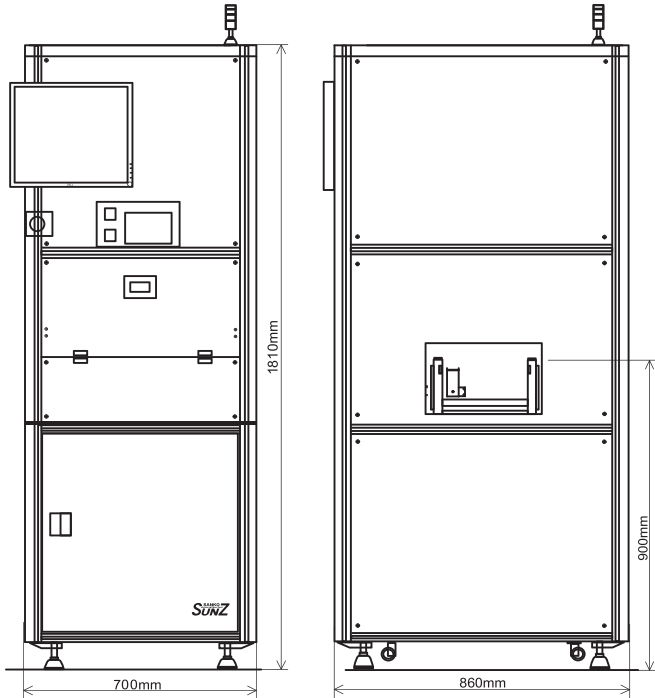
Image capture	One shot taken per view
Inspection speed	10 seconds (250mm × 330mm PCB)
Inspection subject	The state of the coating
Inspection method	Fuzzical Z color analysis, Binary processing
Inspection precision	Adjustable by board size and subject parts

## System specifications

Power supply	AC 100V to 240V 1.5KVA
Environment of use	Temperature: 15 to 35°C, Humidity: 30 to 80%
External Dimensions	700mm(W), 860mm(D), 1810mm(H)
Weight	160kg
Camera unit	CMOS
Camera resolution	36.3 million pixel
Lighting	Black light
Control Unit	PC OS: Windows 7
LCD monitor	19-inch
Readable code	2-dimensional code, barcode

※Code reader is an option

## Dimension outline Inline model



## Inspected board specifications

Board size	50mm × 50mm to 250mm × 330mm
Board thickness	0.5 to 2.0mm
Board warpages	3mm or less
Height of parts(bottom)	80mm or less, customization possible
Height of parts(top)	70mm or less

## Inspection specifications

Image capture	One shot taken per view
Inspection speed	10 seconds (250mm × 330mm PCB)
Inspection subject	The state of the coating
Inspection method	Fuzzical Z color analysis, Binary processing
Inspection precision	Adjustable by board size and subject parts

## System specifications

Power supply	AC 100V to 240V 1.5KVA
Environment of use	Temperature: 15 to 35°C, Humidity: 30 to 80%
External Dimensions	700mm(W), 860mm(D), 1810mm(H)
Weight	200kg
Conveyor height	850mm(+100mm/-20mm)
Camera unit	CMOS
Camera resolution	36.3 million pixel
Lighting	Black light
Control Unit	PC OS: Windows 7
LCD monitor	19-inch
Readable code	2-dimensional code, barcode

※Code reader is an option

Please note that the information on specifications described on this catalog is subject to partial change without prior notice for purpose of product improvement.

This catalog contains information as of December 2015. (LCB Version 1.0 - 2015.12)

### MANUFACTURER:

**SANKO**  
Universal Neo Zee  
**SUNZ** SANKO TSUSHO CO.,LTD.

The Nihonbashi Sanko Building, 16-7, 2-Chome, Kakigara-Cho,  
Nihonbashi, Chuo-ku, Tokyo 103-0014 JAPAN  
Tel: +81-3-5642-7337 Fax: +81-3-5642-7340 URL: www.sunz.co.jp

### DISTRIBUTOR:

**EAP** Electronic Assembly Products Services  
www.ladybirdaoi.com

LLC 1220 Runnymede Road, Dayton, Ohio 45419  
937-414-6652 office / 408-228-0665 fax  
www.eapltd.com E-mail: john.johnson@eapltd.com