

Area Overview

The Ko Chang archipelago is a must see cruising ground, it's 52 islands combine a balmy tropical climate with the lovely temperament of the Thai people, deserted long white sandy palm tree lined beaches, secluded anchorages and a scattering of restaurants and resorts offering up the very best that Thai cuisine has to offer.

If snorkeling is your thing you'll find living coral reefs at most anchorages. For a deeper look, diving can be arranged with local operators. BB Divers is on all islands and should be arranged in advanced.

Beyond the abundant beaches, resorts and tropical rainforest walks, the area is of historical significance, situated in what was once named the Gulf of Siam and bordering Cambodia there remains influence of the Chinese traders of old and stories of piracy, the Japanese occupation during the second world war, the French occupation of Indochina or Lao, Cambodia and Vietnam combined. A little bit of research before you arrive will provide you with an endless opportunity to explore the islands beyond the shore line.

As of this writing there is a total of 10 yachts frequenting the area so you can be sure that there will be no jostling for moorings, often times you'll have the anchorages all to yourself. A yacht entering a bay is still something that people take photo's of and fishing boats still stand and wave as you pass by.

A Brief History

Ko Chang

The fishing villages and small local ports have supported the traders plying the waters between China and Bangkok; just south of Ko Chang the French sunk one of the few Thai Navel vessels during the period of the French occupation of Lao, Cambodia and Vietnam.

Ko Kut became a refuge for people fleeing from the Japanese occupation during the second world war and up until the late seventies and at the end of the Cambodian civil war the area was considered a lawless no go area by most and stories of piracy were abound.



Koh Chang Archipelago - Main Islands

A Brief History continued...

Things have changed since then, Ko Chang, the largest of the islands in this group and second largest island in Thailand, boasts a healthy tourist trade. The area was given Marine park status in 1984 and 85% of the islands rainforest interior remain in tact.

The marine park boundaries include many of the surrounding islands and reefs and works to protect a traditional way of life amongst the local fishing community and a wealth of marine life and live coral reefs. Beyond the Marine park but within a day's sail lie Kok Mak and Koh Kut, they boast an impressive history that's well worth some investigation before you set sail.

Ko Mak

The Ko Mak's history dates back to the late 1800's and was administered by the Prachankiriket province by "Officers of Chinese Affairs" appointed by King Rama V. Since then the Thai/Cambodian borders have moved and Prachankiriket province is now part of Cambodia and known as Koh Kong, a rather notorious center for Cambodian casinos. Their descendants make up the few family clans that today own most of the island and still own and operate the old rubber and coconut plantations that cover most the island.

The wealth of these families has fostered many interesting characters, artists, architects who have bestowed upon Ko Mak some of their most prized works.



Ko Kut

Koh Kut being the most distant island of the group is the least documented; we know that it was home to many people fleeing the various wars that scar Thai and Cambodian history. Its people and culture seem to be a convergence of Khmer and Thai.

Royal visits include King Rama VI in 1911 when he visited one of the many waterfalls and gave it's royal name 'Anamkok Waterfall' in commemoration to Ong Chiang Lue, a Vietnamese king taking refuge in the Kingdom of Thailand during the reign of King Rama I in the late 18th century.

The lack of documented history (in English) does not detract from the islands draw to the more inquisitive traveler. Their culture and traditions remain in tact on the east coast and make for an interesting visit by yacht. This is in stark contrast the western side of the island which is home to some of Thailand's most coveted resorts. Little known to the foreign tourist trade these resorts nestled in amongst forest lined shores, have been serving the more discerning Thai traveler for years and as such are a very refreshing change to the humdrum of today's "standard resort", and as a visiting yacht you will receive the very best of Thai hospitality.

Points of interest: The town of Salak Phet is the largest and oldest settlement on Koh Chang and the home of Ko Chang's primary fishing community, it remains rustic and authentic. The area is also home to the island's largest mangrove forest and just a quick drive or short and flat bike ride away you can reach a well maintained viewing path that weaves its way through the forest. Another great way to explore the mangroves is on a kayak for rent from the base or a few small resorts closer to the mangroves for easier access. The temple in Salak Phet is worth a look at its vibrant colors and design. Just a bit further afield is the *Ko Chang Spa Resort* where one can truly be pampered, offering every imaginable combination of spa treatment, massage, daily yoga classes and healthy food. Salak Phet is a relaxing and interesting place to spend a day before or after your trip.

Approaches:

ROCK AWASH HAZARD: Just south off tip of the western point at the entrance to the bay approximately 300 meters out, lies a large and generally submerged reef. The reef is marked on the chart however one must take precaution particularly if you are heading to or from the adjoining western bay of Bang Bao, as the hazard is an unusually long distance from the mainland.

Enter in the middle of the bay, refer to anchorage data for anchoring choices, if you plan to come along side the Charters pier please contact the dock manager by mobile phone first, or anchor off the pier until you can make contact. **Please do not attempt to come along side the pier unassisted.**



Koh Chang - Ao Salak Phet - Anchorages

Anchorages

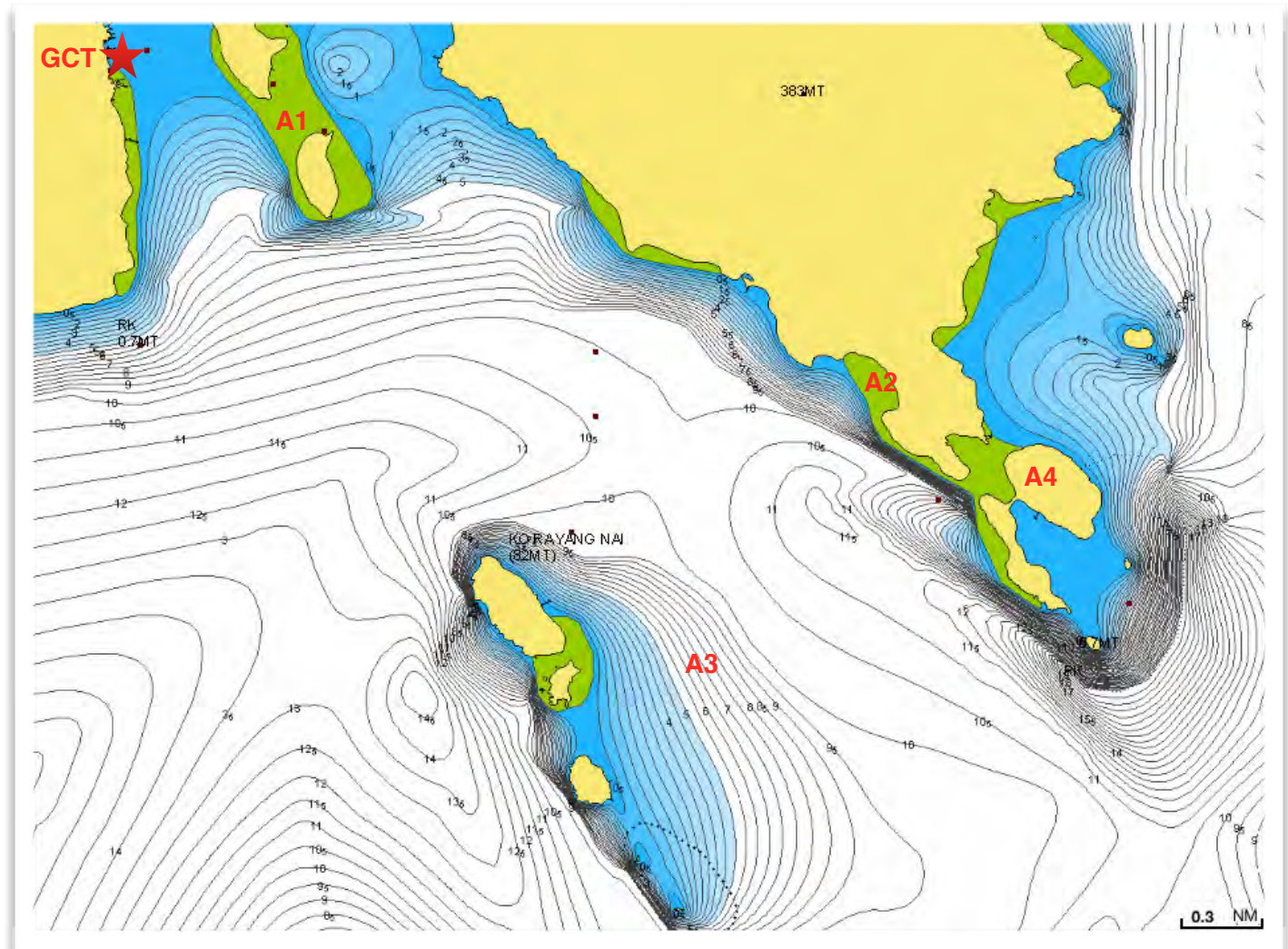
A1. If you'd like to get off the pier but don't have the time left in the day to make it out of the bay, this is a very pleasant option offering privacy in a well protected location before you head out to explore the archipelago.

A2. Another close anchorage in the NE winds is Long Beach on the eastern shore of Salak Phet.

Anchor well off in 10m and use the dinghy anchor to avoid a long drag to the restaurant. If it's open The Tree House Resort is here and the food is good and the menu large. Well off the beaten track it's a popular place for backpackers from around the world and pretty rustic. This is a very shallow bay, the water is only waist height 800m from the shore at high tide, so

A3. This island group and it's resort are privately owned but it's generally no problem to drop in. The resort in the northeastern bay caters to groups that book the entire resort. When unoccupied the staff are generally very happy to see someone and many of our guests have been invited to say for dinner.

Anchor just off the pier in 5m to 7m taking care not to block access to the pier. These islands are good day stop on your way south for a quick dip and a snorkel around the rocks. For light SE winds and swell there is limited protection and no protection in the NE winds therefore it's **not recommended for overnight anchorage in the NE** and only in light weather for the SW winds.



Koh Chang Anchorages - Koh Ngam

Ko Ngam

The name Ko Ngam, directly translated means beautiful Island and the name is not misplaced, often referred to by Sailors from Phuket as mini Phi Phi Island due to the similarities.

The island's two beaches are separated by a low lying isthmus while the two ends of the island are thickly forested hills. It is this shape that makes the bay to the south **dangerous during the stronger north winds from November through to the end of January**, as winds are funneled through the isthmus greatly increasing the wind speed.

Amenities

Ko Ngam is part of the marine park and therefore construction is restricted and up until October 2009 there was no amenities on the island, however there is a derelict resort in anchorage A3 but other than that you will have the island to yourself.

Approaches

Going to the **North** bay enter the channel from the west staying in the center of the channel.

Going to the **South** bay **steer well clear of the rock awash at low tide just SW of this island until in +10m depth, it is not very accurately charted.**

Anchorages:

A4

Anchor at 10m. in the **north** bay.

Anchor in the middle of the **south** bay in 5 to 7m

Point of interest: there can be good snorkeling on either side of the south bay, with big clams and schools of parrot fish.



Koh Chang Anchorages - Bang Bao

Bang Bao

A bustling pier with just about everything you could imagine, precariously mounted on stilts, this is the main drop-off and pick-up point for the areas dive boats and day trips, it also remains a working fishing village.

The pier boast some excellent seafood restaurants and there is a scattering of European restaurants also. This is a good stop-over to top off your dwindling provisions, there are several Thai style fresh food stalls along with a fairly well stocked *7-11 store* and also an *ATM and Money Exchange*.

Amenities:

Provisioning: Food and beverage in abundance, clothing stores, souvenirs, pretty much everything you could want. There is also several bungalow resorts located on the pier. At the end of the pier on land there is a good fruit stand and a little further along a small market with veggies and basic supplies.

Services: There is a bank at the entrance to the pier, you can exchange foreign currency or draw cash from the ATM. You'll also find many tour operators if you need to make travel arrangements, Internet access, laundry, mobile phone shops, a post office etc.

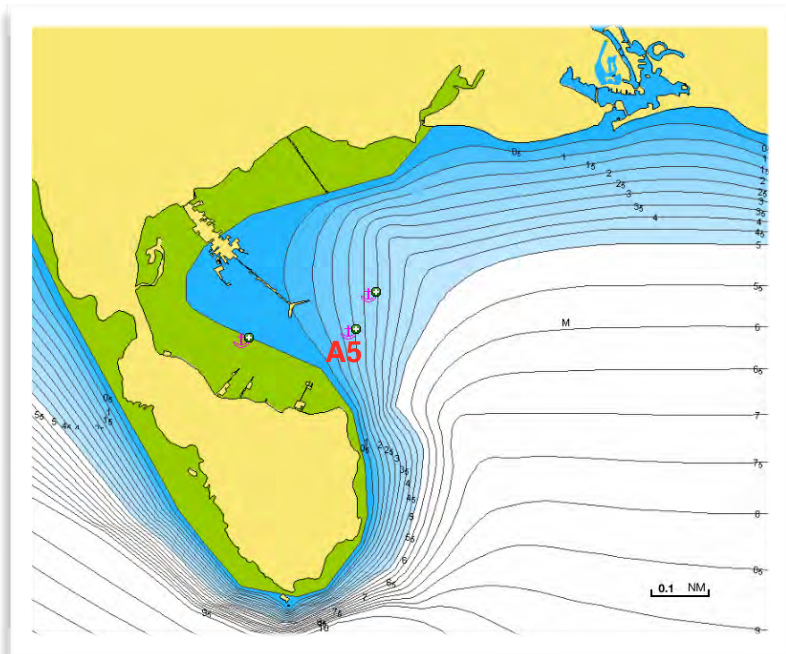
Island access: This is a convenient place to base yourself for easy access to the west side of the island, taxis are available at the entrance to the pier, you can also rent a car or motorcycle though the roads are windy and steep going north from here. To the west is the bohemian Klong Koi. On the way form Bang Bao there are a few small resorts and restaurants on the rocky shore above the water and cheap eats on sandy Klong Kloie beach. Be careful if approaching the beach in the dinghy as there are rocks in the sand and a shallow reef off shore. Head for Mr. T's for live music and excellent curries. **Do not attempt to go ashore at night.** This area is best approached by the road. Popular with day trippers, this area can get crowded from mid-morning until afternoon.

Approach and Anchoring

A5. Enter in the middle of the bay, be aware that this can be a busy thoroughfare for commercial boats. The bay is very shallow once you get beyond the end of the pier, and the eastern side of the bay quickly shoals up to a drying reef. The best anchorage is to stay just west of the main concrete pier and light house, you can move beyond the end of the pier approximately 100m, anchor in 3 to 4m's of water.

To access the pier you can either take your dinghy to one of the restaurants that have a floating dock and tie up there or take your dinghy to one of the concrete stairways and tie up to the main pier, be sure to move your dinghy out of the way of commercial boats using the same access point and remember to leave enough of the painter to allow for falling tide. At night it'd easiest to tie up to a tour boat and climb across to the pier.

Warning: at low tide you can not use your dinghy to access the restaurants floating dock as it is too shallow and keep in mind how much time you intend on spending on the pier and what the tide is doing. It is a very hazardous task to drag your dinghy through the mud, you'll sink in to the mud all the way to your waist!!



Koh Chang Anchorages - West Coast

West Coast of Ko Chang

This is the main tourist area of the archipelago quite typical of beach resorts that start out as a little known backpacker retreats and grow into a patchwork contrast of old Asian style and new modern European style buildings. There are 5 main areas which are described below. Ref to the Ko Chang magazine for the best guide

Amenities:

Provisioning: Koh Chang has larger supermarkets now such as Makro, a big box store, Tesco Lotus and Big C located in Whitesands Beach.

VJ Supermarket, located in Chai Chet offers a broad range of items and stocks many western brand food items. It has a well stocked liquor store and though the wine range is limited it might be the best on the island.

There are many places to eat out on shore and lots of bars to choose from on this side of the island. From Lonely Beach to White Sands you can find everything you're looking for.

Lonely Beach is more the hippy, young backpacker scene open late at night with lots of tattoo and piercings on offer.

Kai Bae is more family oriented with lots of good restaurants. You can visit the **Meechai Elephant Camp** and have them meet you at Kai Bae beach to play in the water with the baby elephants. 500B pp and totally worth it. Don't forget the bananas.

Chai Chet is mostly resorts with a nice beach and the Klong Prao River which you can navigate in the dinghy. Bring the dinghy right to the dock at the Sapparot Bar for some tasty curries and a cold drink.

Klong Prao to the south has a more local feeling with a wide sprawl of little roadside shops and a little bit of this and that. **Kati Thai Cooking School** on the south side of town is a great place to learn to cook your favorite local dish. Klong Prao town is far from the river and easiest to get to by taxi.

Whitesands Beach is party central and also has all the big food shops. In the very north is a good stop for lunch at Rock Sand Resort right over the water. You can anchor just off-shore and dinghy to the beach.



Koh Chang Anchorages - West Coast

Approaches and Anchorages:

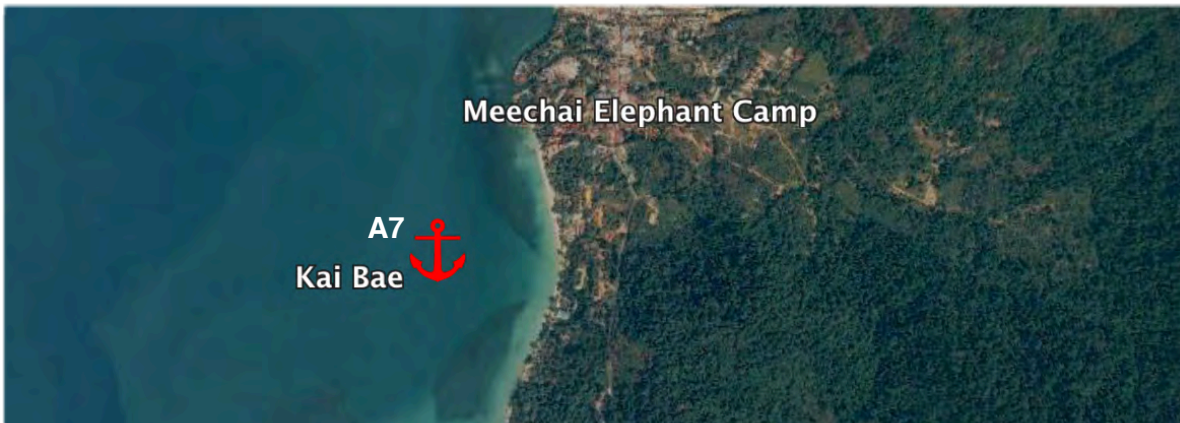
A6. Lonely Beach, home to the once lonely location of the Tree House now not so lonely with several resorts sharing this lovely beach.

There are a variety of resorts on the beach and the little town is just to the south and off the beach, a short walk or taxi ride away.

Anchor in 5-7m off the sandy beach about 400m from the shore, the beach is shallow shelving and there are a few rocks around so take great care when taking the dinghy ashore.

Always tie the dinghy to whatever you can and/or use the anchor and keep aware of the tides so it's there the you return. Don't attempt to go ashore south of sandy beach as there is no safe place to land the dinghy.

A7. Kai Bae Beach has a wide variety of restaurants including our favorite Barrio Bonito for excellent Mexican food and the Belgian Brasserie Chez David for fresh pastries and a great variety of Belgium beers and European cheeses. Also in Kai Bae, in the mornings the Meechai elephant camp takes the baby



elephants for a walk on the beach. They charge for a picture but the precious pachyderms frolicking in the water are not to be missed. For 500THB you can ask the Kai Bae Hut Resort on the beach to have them bring an elephant to the water just for you, or a few of them.

Anchor off the sandy beach in **5-7m** and head in towards the south side of the beach with it's sandy bottom. This coast has a shallow shore so pull up the engine and paddle to the beach if necessary.

Koh Chang Anchorages - West Coast

Approaches and Anchorages cont...

A8. Chai Chet Take care when navigating around this area as there are numerous small islands and submerged rocks. The anchorage is at the northern end of the bay away from such hazards.

Anchor in 5-7 meters well off the beach, or around the klong (small river) mouth.

Most of the jetties up the river are restricted for use only by the resorts that built them, however it is possible to take the dinghy up the river and tie it up to a restaurant if you stop there for a drink or something to eat.

Points of interest: The beach is sandy all along but shallow so take care when going ashore. There are several resorts and the well stocked V-Mart supermarket as well as 7-11 and ATM machines. Toward the center of the bay is a Klong (or river) that can be navigated by dinghy at high tide, or followed on foot up to a small waterfall. The trail is about 3km long and most evenings is lined by hundreds of fireflies. The head of the waterfall is now a national park so there is an entry fee. **Take care when entering the river as there is a large submerged rock in the center of the channel near the entrance.**

Check the tides before going up the river. Docking your dinghy at Moley's or Sapparot for lunch or a drink are both a good start. At night the river is beautifully lit by the restaurants and resorts and Phu-Talay Seafood is a good stop for dinner.

Off the southern end of this bay are the small islands of Koh Suwan and Koh Rom, beware of several small uncharted rocks around here. Sailing south around the headland into Bai Lan Bay, pass to seaward of Koh Man Nai, tourists walk out to this island at low tide. There are several good lunch-time anchorages around the nearby islands here.



Koh Chang Anchorages - West Coast

Approaches and Anchorages cont...

A9. Whitesands Beach

This is the main town on Koh Chang and it is possible to anchor anywhere along the beach in 5-7m on sand. Anchor towards the quieter northern end of the beach as the beach is dingy friendly, whereas the central section of the beach can dry up 100m offshore in low tides and the southern end of Whitesands beach in fact has no sand, it is extremely rocky. Find a tree to tie your dingy to if you plan to stay ashore for any period of time.

Points of interest: toward the north end of the beach is the popular 15 Palms Resort that has a good restaurant, wireless internet, toilets and showers and there is also a great tree to tie your dingy to, make sure the staff see you tie the dingy up and stop in and have drink and they'll keep an eye on your dingy for you.

On the main road behind the 15 Palms is a 7-11 store, pharmacy, ATM, dive shop and multitude of roadside stalls and restaurants.

Before the cliffs to the south end of the beach are some excellent sunset chill out spots. If you're looking for the latest sports update or you're just in need of some comfort food and beverage, turn right here then walk around 500m and half way up the hill is Paddy's Palms Irish Pub, the best place to get a Sunday Roast in Thailand, it also has excellent wireless internet.....the Cider's not bad either.

Past the huge KC Grand Resort at the north end of town is the Rock Sand Resort that sticks out over the water on stilts. They serve great food in big portions on the deck over the water for great sunsets and have a floating platform you can swim to just off shore.

If you don't mind being further from town, anchor to the far north off the Rock Sand or even the White Sands Beach Resort on the sandy bottom.

All the shops are local to this area if you need to restock your provisions and just about anything you can dream of can be found in this little touristy mixed hodge podge of hotels, bars, food stalls, buy-me-drinky bars and mini-marts.



Koh Chang Marine Park - Outer Islands

Ko Chang Outer Islands

Ko Chang gained marine park status in 1984 and 85% of the island remains forest. The marine park boundaries include many of the surrounding islands and reefs and works to protect a traditional way of life amongst the local fishing community with a wealth of marine life and live coral reefs.

Amenities

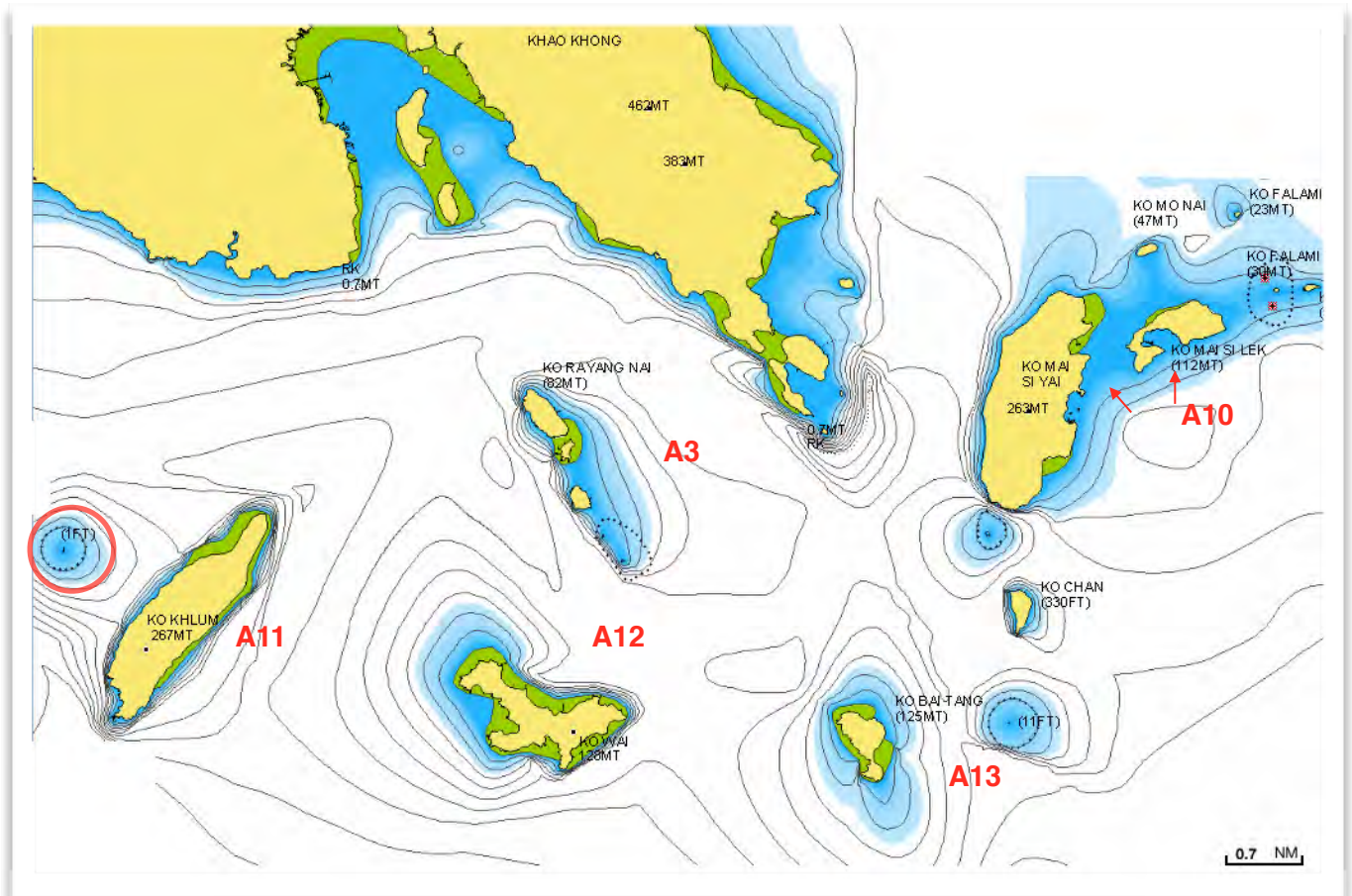
Those communities that existed prior to the establishment of the marine park were permitted to stay and maintain any infrastructure in place. For this reason there is little in the way of amenities on any of the islands in this group other than a scattering of small fishing villages.

That said, there remains an abundance of pristine beaches and bays that offer good protection and a wealth of snorkeling opportunities, having a small palm tree lined bay and white sandy beach all to yourself in this area is infinitely doable.

Approaches and Anchorages

A10 - Ko Maisi Yai (big) and Ko Maisi Lek

(small) are generally considered to be lunch stop. Ko Maisi Lek offers better protection in the NW winds and both have a small fishing village in the bay and this area is known as a good fishing spot for bottom feeders, grouper and the like. At Ko Maisi Yai anchor in sand between the islands in 10m. At Ko Maisi Lek anchor in the middle of the bay in 5m to 7m on a mud bottom.



Koh Chang Marine Park - Outer Islands

Approaches and Anchorages cont...

A11 Ko Khlum This island is uninhabited due to the steep cliffs that reach to the waters edge. Not a lot in the way of beach here, but you can find a sandy spit or two you can sneak on to at low tide.

Approaching the island on the west side **be aware.....very aware... of the rock awash to the west, Hin Rap which has no doubt sunk a few boats in its time.** This rock is well know by the local dive community and features on most of the dive trips operated in the area, also good snorkeling and fishing.

Anchor 7m anywhere along the west side which offers good protection in the NW winds.

Alternatively, Anchor 7m on the NE side which offers good protection in the SW winds with a white sandy beach at low tide.

A12 Ko Bai Tang

Known as Turtle Island because of it's shape, this deserted island has a defunct park headquarters and a reef around the edge of the beaches often good for snorkeling. There's not much protection here and only in light winds should you consider staying overnight at this anchorage.

You can anchor on any side of the island in 10m. It's best to swim ashore as the island beaches are rimmed with reefs.



Koh Chang Marine Park - Koh Wai

A13 Ko Wai

The north facing big beautiful bay on Ko Wai is a favorite day trip destination for people traveling from Ko Chang and has considerable infrastructure and fun shallow snorkeling in and around the pier. There is a scattering of resorts in this bay though no protection in the NE winds.

The coral reef in this bay shoals up very quickly and has brought several of the Gulf Charters fleet to a quick end to their voyage over the years.... so if you are dropping anchor here for a beach side lunch anchor in **7m to 10m well off the beach**. When bedding the anchor be sure you don't drag all the way to the reef.

For an overnight anchorage drop anchor in the small rocky SW bay. There's a not so well marked trail that takes you to the north bay, be sure to take a flash light with you and footwear and bug repellent is advised.....tie the dinghy to a tree to avoid a nasty swim back to the yacht when you return and keep an eye on the weather as you will be out of sight of the yacht. Best advice is have dinner on board and enjoy the serenity of the solidarity and the beautiful sunset.

In the southern bay yo can walk across to bottom finger to the SE bay and if you're lucky the place will be open for a cold drink and maybe even a snack. In heavy winds the fisherman tend to hide out on the south western sides and there's the option of getting fresh fish or squid. They want only beer and not money so bring them a few cold beers in the dinghy and you'll have the freshest seafood around.

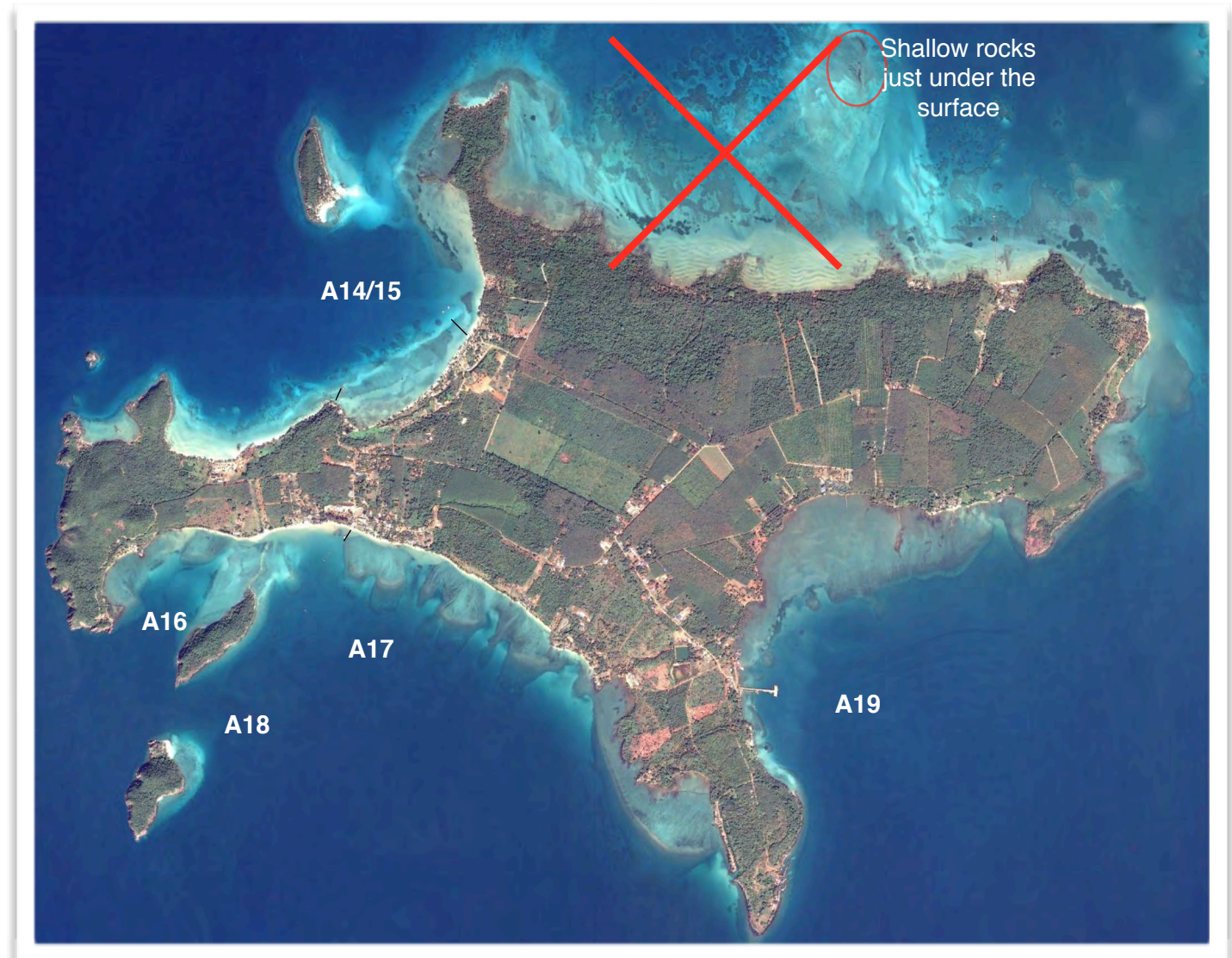


Ko Mak

Unlike most of the islands Ko Mak is flat so taking a motorcycle is less of a hazard and the flat terrain makes it a great place to explore by bicycle. There is an “Eco Trail”, sign posted spasmodically across the island, you generally find one of the map posts near a pier, hotel or cross road. This Map details a trail that takes you to each of the islands most prized attractions, originally intended to be a bicycle trial and that was the Eco bit. The lack of bicycles for rent is offset by the abundance of motorcycles for rent which is a quicker way to travel on the island but cycling allows you to take in all the rubber tree farms and coconut plantations at a more relaxing pace. You can also rent a taxi to take you around the island in the way of songtheaw or just a truck with wooden bench seats in the back.

This island is quite different to the other islands in the archipelago, very chilled and laid back and well worth exploring.

There are no ATM's on Koh Mak so make sure you bring enough cash with you. If you should have to exchange foreign currency the hotels are the best place but with bad rates and high fees.



Koh Mak - Koh Kham

Approaches and Anchorages

A14 Koh Kham This is my favorite anchorage, however in the NE winds it is not advisable to anchor here over night if the winds have a lot of northerly in them, though it's a great lunch spot. This is the beautiful Koh Kham island and its abandon modern resort project with Creeping Jenny covering the concrete walls in great contrast to the white sand beach and black lava rock boulders leading out to a sand bar. There is a 100THB fee to go ashore and that gets you a cold drink and you can enjoy one of the many swings or seating areas. Well worth the fee with bathrooms with showers on shore you can use.

Anchor anywhere in the bay southeast of the long pier in **5-7m**. Be careful and watch the depth as it shallows towards the sandbar quite quickly.

Bring the dinghy to the sand bar or the beach to the east of the pier. Do not take the dinghy to the west side of the pier as it's very shallow and sea urchins cover the bottom of the sea floor.

Be aware that to the west of Koh Kham and between the island and Koh Mak there is a large sand bank and you can not pass through. Also pay close attention and stay well off the pier when coming or going as there is a ring of rocks around the island and off the southern beach.

Alternatively you can anchor a little more south towards Koh Mak in 7-10m. Winds from the north will creep into the bay but if there's a lot of easterly you'll be well protected. **Squalls often blow up at night from the NE and it's not advisable to anchor here at night in the NE season.**

During the SW season if there is strong winds, they sometimes wrap around Koh Rang to the west and into the north bay making it roly and uncomfortable. More southerly winds make this spot a fine anchorage.



Koh Mak - North Bay

Approaches and Anchorages cont...

A15 North Koh Mak

The long sandy beach on the north side of Koh Mak is well worth a visit. Left of center is the Ko Mak Resort, a huge property with a great pool to the west that has a toilet and three showers surrounded by greenery and flowers. In the middle of the beach is the **Seavana Resort** with its domed thatch roof serving the best food we've found on the island with friendly service and reasonable prices.

A little more to the east is the **Cococape** Pier bar that stretches out over the water with snorkeling, a shower at the end of the pier and cheap but delicious drinks made by the friendliest bartender Chai. Be careful tying up the dinghy to the end of the dock as there is reef underneath so make sure you know the tide and leave before it gets too low.

A short walk up the hill behind the Seavana or up from the Cococape is the **Islanda Resort** with breathtaking views of Koh Kham and to the north. This is a great spot for sunset.

Anchor in **7-10m** north of the dock and away from the path of speedboats.



As shown to the left, bring the dinghy ashore to the east side of the pier for a sandy bottom. All along the beach there are underwater obstructions and it's best to only bring the dinghy ashore in this area if you will be there after dark.

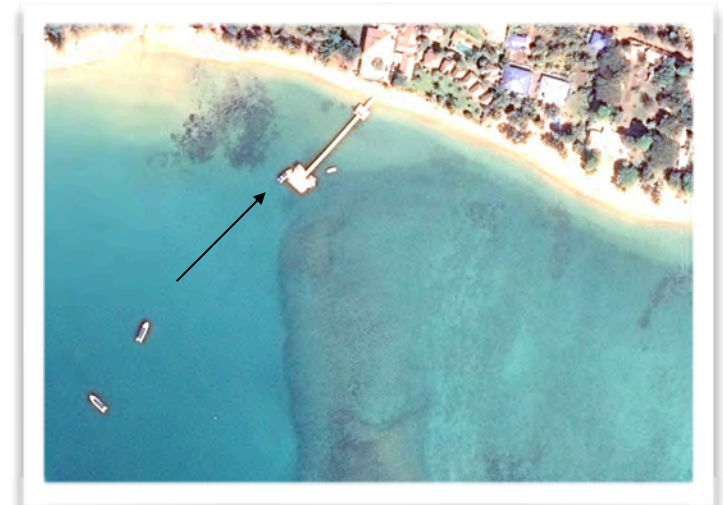
Koh Mak - South

Approaches and Anchorages cont...

A16 Southeast Koh Mak is a sheltered little bay with not much going on other than it's well protected. from W to SW winds. Do not attempt to bring the dinghy around the north Ko Rayang Nai, as it's very shallow water with lots of rocks. This is however a great place to base yourself for a paddle up the west coast of Koh Mak where there are lots of caves and large schools of small fish in the clear water.

Anchor in the middle of the bay in **8-10m** with enough swing room to clear the surrounding reefs.

A17 Ao Phra is a huge bay and is the primary place to anchor when visiting Ko Mak during the NE winds. **Anchor in 5m to 7m** off the wooden pier by at least 100m and to the west to gain a little more protection from Ko Rayang Nai, take care not to venture too close as this beach sports a treacherous shoal that lines the entire shore line, be sure to have a lookout on the bow as you come in to anchor.



The rocky shoal that lines the beach is so shallow that it is not easy or recommended to take your dinghy to the beach so access the beach via the pier staying to the west, shown in the detail here. Board at the wooden steps but please move your dinghy away from the steps and further down so you don't block access to the pier for the speedboats and ferries.

Places to go: To the west of the pier you'll find a few beach resort s with a relaxing atmosphere and good food.

Straight ahead from the hotel street entrance there is live music Mondays and Fridays and great cocktails at the outdoor Koh Mak Art House. Across the street is good cheap local Thai food that will deliver it to you while you enjoy the music.

Turn right at the street entrance where there is a wide range of eateries, bars, knick knock shops, laundry, travel agents and resorts. There are no 7-11's here but to the left if a well stocked mini-mart with a often decent wine selection.

A market with well stocked veggies and other items is just down the street to the right and on the left side with big white freezers out front where you can stock up on ice.

It's a great place to rent a bicycle or motorbike as there's virtually no traffic on the islands and shaded roads to wander down.

Koh Mak - South

Approaches and Anchorages cont...

A18. Ko Rayang Nok has an exquisite little beach to the north and if you'd like a change from the hustle and bustle of the ferries and speedboats at Ko Mak anchorage this is an option. Anchor in **7m to 10m** on sand, just east of the beach. There is some infrastructure on the island and they do charge a fee for visiting in the day time, the fee includes a refreshment, chair and umbrella. It was 100 baht at the time of writing. Watch the currents through the pass and they can be quite swift so don't let anyone drift away when you're not looking. Try fishing for squid in the evening as they are generally plentiful here.



A19. Ao Ta Nit is the home of the commercial port and Ao Nid pier that services the island and although not unpleasant does not offer anything in particular to the

cruising yachtsman...except it is a well protected anchorage on Ko Mak. There are a few small resorts and restaurants ashore as well as Koh Mak Seafood just north of the pier. There is also the Koh Mak museum with a little bit of history inside. The small beach resorts along the shore have trees with shade. At the base of the pier the Koh Mak Steakhouse & German Bakery makes fresh bread everyday. Be very careful when approaching the pier as there are many sharp shells lining the steps that can damage the dingy. A beach landing is not advisable.

Koh Kradat is the low lying island NE of Koh Mak and fun for kids. The island is privately owned and visitors have to pay 100 Baht entry fee which includes a deer spotting tractor tour of the island which also stops off half way at the beach for 30 minutes. The island is surrounded by shallow water and hidden rocks and if you want to visit you should take a tour from Koh Mak.



Koh Rang and Surrounding Islands

Overview

Ko Rang is one of the archipelagos most popular dive and snorkeling areas, it is also the outpost base for the Ko Chang Marine Park Headquarters. Along the east side there are several rocky islands which the marine park have placed a string of floating ropes to protect swimmers and snorkelers from boats. You are not allowed to anchor at the northeastern islands as the park is trying to preserve those reefs.

There are numerous mooring buoys in this area that are available for yachts to use, however be sure to take the outer buoys around the islands, the inner buoys are too close to the rocks. Only use these moorings as a day anchorage, not an overnight mooring. Be sure to check the quality of the lines before you tie off.

If you plan to stay in Ko Rang over night during the NE season you'll need to make your way around to the upper west side of the island where there's a nice small sandy spit and some good snorkeling.

The Park Rangers will come by to collect a fee of 200THB per person and 100THB per hull that allows you 5 days (consecutive) to explore the area. They don't speak much english and are pretty serious about their jobs. You'll get a pretty park receipt and you'll want to hang on to that in case you plan to return.

On the southeastern most tip of the island there is a phallic shrine frequented by the local fisherman who believe their offerings will bring them success in their fishing and protect them from danger. The shrine has a collection of penii that would send a wave of insecurity through any man. If you're with children you may wish to research the significance of the phallic symbol in Asian culture so that you are well equipped to answer the why questions.

Amenities

There are no concessions for accommodation on Ko Rang so the island is purely natural. This is a great place to cook that dinner you provisioned for, nicely tucked away at your very own private beach. In the SW season the preferred anchorage is at the Park Headquarters. You can fill your tanks with water here at the end of their floating pier. Ask permission in the office onshore and they will set it up for you if water is available. Tourist boats crowd the area from 10am to about 3pm and it can get crowded, especially on weekends. It's best to arrive in the afternoon and you will have the place to yourself until the next day.



Koh Rang - Southeast

Approaches and Anchoring

A20. On the southeast side you can take one of the mooring buoys outside the floating ropes around the small islands and snorkel right from your boat. Note the wind direction when choosing a buoy. Alternatively, you can take a buoy or anchor off the white sandy beach and take your dinghy to the marked snorkeling site and tie it to the ring of floating rope while you're snorkeling. **This is not an overnight anchorage.**

Point to note: getting in and out of the dingy in deep water is not easy and there is no location on the little islands to take the dingy to that will make it any easier.

Near the beach there are tourists boats that crowd in around lunch time so a mooring ball might not be available. You can anchor a little further off the beach or just to the north off the sandy beach in **7-10m**. A few of the tourist boats have slides off the side and my experience is that they don't mind if you take a turn. They might also have cold beer.

The island just of the beach is worth a snorkel around as well and there are mooring balls on the north and south and east sides.

A21. THIS IS NOT AN ANCHORAGE.

DO NOT approach in a sailboat. Only take the dinghy, kayak or SUP board and beware of it navigating the area. There is a large yellow mooring ball attached to this pinnacle rock where you can tie your dinghy to. If there is a dive boat there, you can usually tie off to them for easier dinghy exit and entry.



Koh Rang - Northwest

Approaches and Anchoring cont...

A22. Not recommended during the stronger NE winds due to the island not being big enough to provide protection, this is a beautiful and peaceful anchorage good in light winds. This is also a great day spot and you're only 4-5nm from Koh Mak if you need to seek a more sheltered anchorage. There is often a mooring ball or two but beware of ropes floating without a ball to mark it. The water is clear and you will **Anchor in 5 to 10m** on sand,

Note the sand bar between the small island of Ko Thian and Koh Rang in the NW, do not pass between these islands.

There is good snorkeling in this area and a beautiful white sand beach on shore.

A23. THIS IS NOT AN ANCHORAGE.

These pinnacle rocks are just below the surface and there are really big fish in the water here. This is a National Marine Park and you're not allowed to fish within one mile of the park. **DO NOT** approach in a sailboat. Only take the dinghy, kayak or SUP board and **beware of it when navigating the area as it's not marked accurately on the charts.** Only sometimes is there an empty jug or two attached to this pinnacle rock where you can tie your dinghy to. If there is no marker, there might still be a rope to tie off to or tie your watercraft to yourself.

A24. This spot is a little deeper and further away from the beach but can provide protection from the SW swell and wind. The sand bar between the islands gets quite shallow so be careful getting to shore. **Anchor in 7-12m.**



Koh Rang - Park Headquarters

Approaches and Anchoring cont...

A24 This is the Marine Park Headquarters and where you can fill your water tanks up at the end of the floating dock. Ask a ranger on shore if you can fill up and they will advise you what to do, water might not always be available.

Make sure when you go in to inspect the end of the dock first with the dinghy and notice the mooring lines that run out from the dock to avoid them when coming alongside. They usually want you to fill with water before 9am or after 4pm to make room for the tour boats and fishing boats that visit the island. Make sure to ask in advance and don't expect to be

able to pull up to the dock right away in the middle of the day.

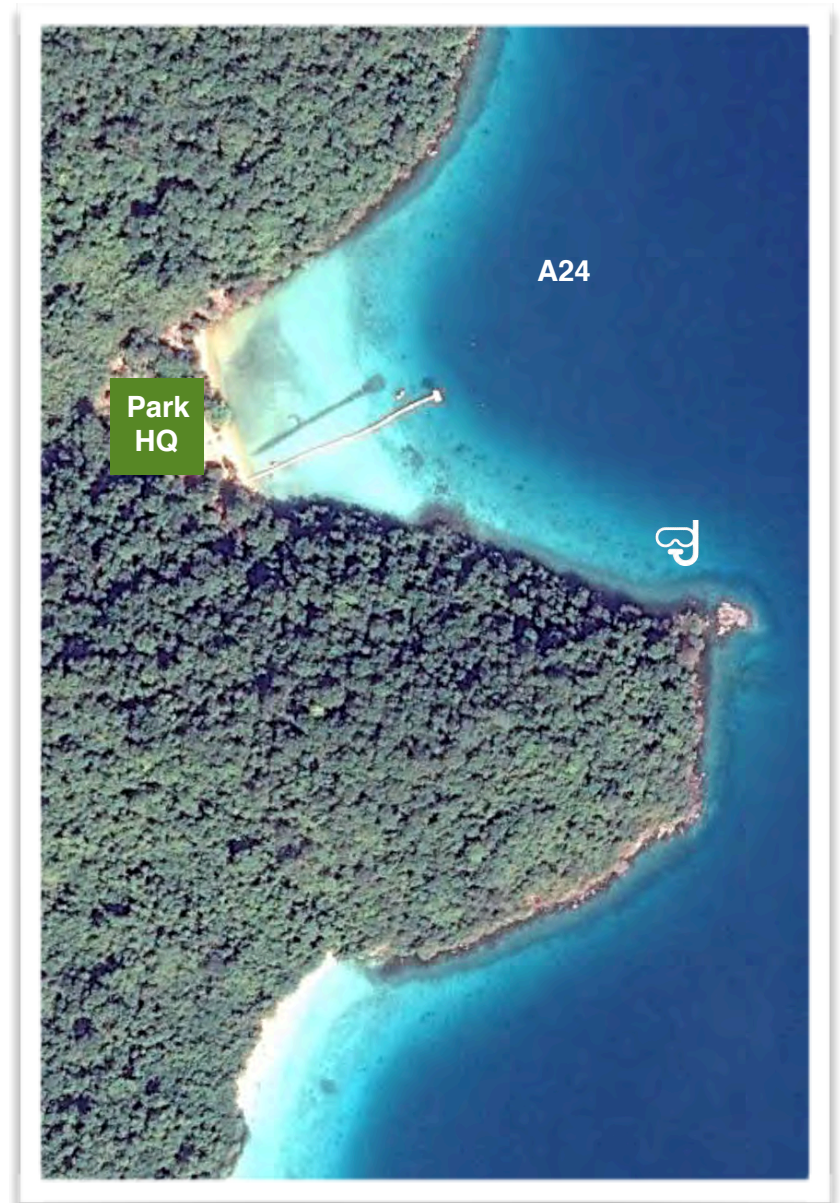
There are jungle hikes from here and a wooden sign to the left of the pier on land showing you the route options. Bring repellent and drinking water.

Mooring balls seem to come and go, usually there is a big mooring ball in the center of the bay. You can also **anchor in 10-12m** in the middle of the bay.

You can take a dinghy or paddle along the coastline from here and snorkel in the clear waters along the coast. Just to the north or south there are secluded beaches and isolated shorelines to explore.

There is a small snack shack on shore but don't expect much in the way of food beyond crisps and pot noodles but they do have nice cold beer.

Bathrooms and showers are on the north side of the beach.



Overview

Ko Kut is quite special. There are so many things that come together to make this island one of the most memorable cruising locations you'll come across; stunningly beautiful bays and beaches, waterfalls, charming Thai style resorts, over the water fishing villages and just a relaxed feeling island wide. Being surrounded by this much beauty is always enjoyable.

Ko Kut is largely isolated, it is the southern most point of Eastern Thailand and therefore has not really made it high on the backpacker or mainstream tourist trail yet. It has long since been a relatively upscale retreat for local people and remains beautifully Thai.

Ko Kut hosts a scattering of resorts who's food and hospitality are perfect. There are rivers to explore, waterfalls to visit, night walks to do, cocktail bars to lounge in and an over supply of deserted palm tree lined white sandy beaches all accessible from very protected anchorages.

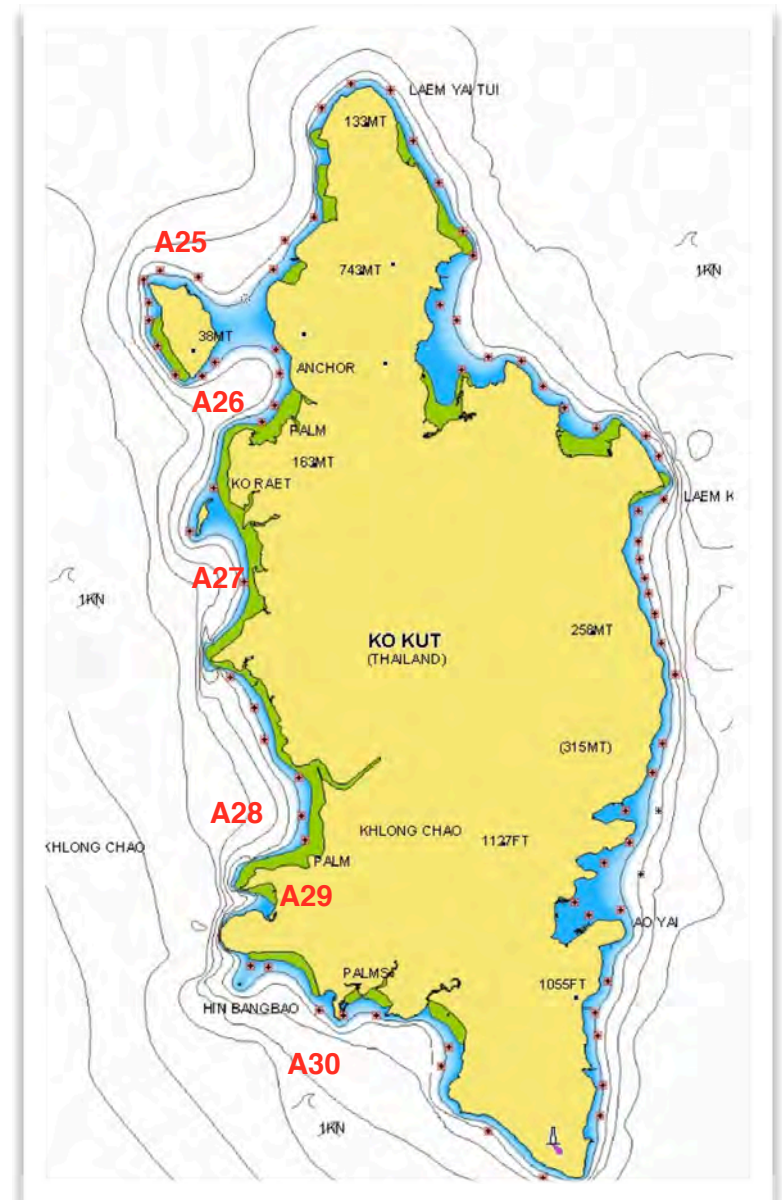
With the main tourism being local, don't expect as many people to speak english here.

The only way to get to Koh Kut is by ferry from Laem Sok in Trat direct or to come from Koh Chang or other local islands. In the works is a link between Koh Kut and the mainland to the east which would bring in more travelers coming from Cambodia.

Amenities

There is no "tourist town" on Ko Kut. The town center is very much a small Thai Village that supports the outer lying fishing villages. There is a local fresh food market, a hospital, a school, post office and a few other general stores but with a bit of exploring you'll be able to find most of what you might need. Staff at the resorts or dive shops are good sources for information and are always willing to help out.

There is only one (inconvenient) ATM machine on the island at the hospital that gets topped up once a week so make sure to bring plenty of cash with you or you will be paying hotel foreign exchange rates. You can take a taxi or rent a motorbike to get to the ATM and we recommend the latter and mix that up with a tour of the island. The roads aren't crowded and there are a lot of things hidden in the beautiful jungle here.



Approaches and Anchorages

A25. Ko Maisi Lek, when visiting the island **Anchor in 7 to 10m on sand**, on the north east side of the island near to where the visible infrastructure is on shore.
Be aware of the rock to the east of the channel and take care when maneuvering here, the channel is smaller than it looks.

Points of interest: Ko Maisi Lek is a fairly none descript island though was once the home of one of the royal appointed Officers of Chinese affairs and the old plantation style house remains, though quite dilapidate, the caretakers are generally ok for you to take a walk around, the mosaic floors date back to the King Rama 5 era and for any person educated in this period of Asian history I am sure would be astounded by the abundance of artifacts that are left just lying around.

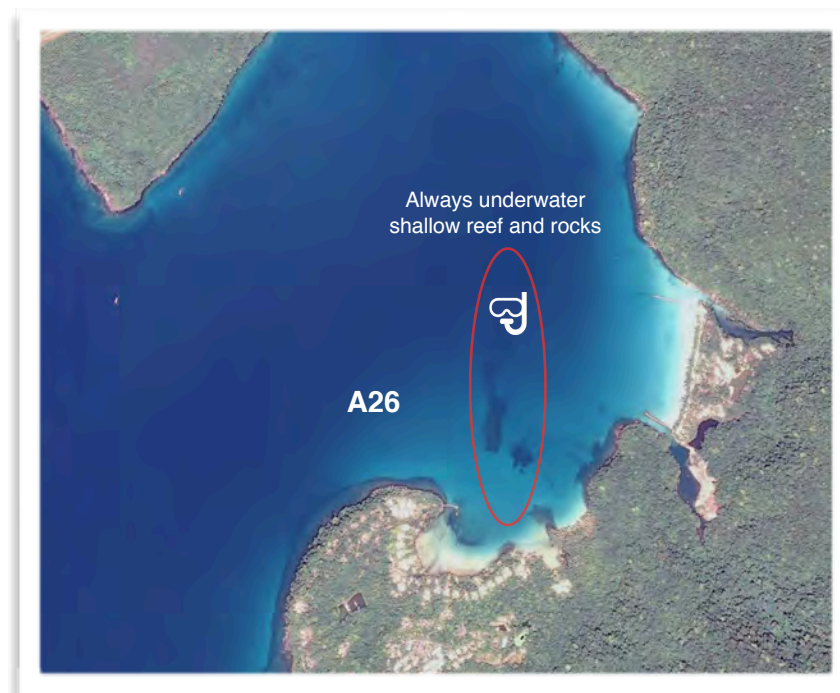
There was and might still be the Maisi honey farm run by the local monks. Maisi Lek island is a funky place for a change of pace and an interesting local experience. They were there last year and the honey was fantastic and the people exude true Thai (the land of smiles) hospitality.

There used to be a pearl farm on the island and maybe you'll get that lucky shell that was left behind to grow a record breaking pearl.

..
A26 Soneva Kiri this 6-star resort caters to only those who can afford it or like to play High-Roller now and then. They have Treepod dining and a nice pool side restaurant that looks so beautiful it just might bring a tear to your eye. The units are so fabulous each with their own private butler, buggy and beach it's hard not to want to peak. But although the resort is private the reef that they built outside the resort isn't. **Anchor is 5-7m sand bottom** away from the long dark reef you can see underwater. Anchor to the W or NE of the reef. The beach on the

eastern shore is private so it's not always comfortable to go ashore but it's often empty. Beware of the large shallow long charted reef. Go well north to clear the reef if heading to the beach. For a meal at one of their 5 restaurants you must call ahead.
www.soneva.com

To the north are two sandy beaches you can anchor off for good NE protection, the northern one being the best.



Koh Kut - Captain Hook's Bay

Approaches and Anchorages continued...

A27. Ao Check Ki (Captain Hooks Bay) Approach from the south of Ko Raet, do not pass through the north channel between it and Ko Kut as there is a sand bar across the entire channel.

Anchor anywhere in the bay on **sand in 4 to 7m**, in-between the rocky headland and Ko Raet is best. You'll be sure to be the focus of many sunset photographs taken from the sunset viewing platform of the Captain Hooks resort. It is tempting to get too close to land here, but to enjoy a mosquito-less evening stay well off shore.

Points of interest: This is one of our very favorite locations, besides being an absolutely spectacular bay with a coconut tree lined long white sandy beach, crystal clear water and protected anchorage, tucked into the corner is Captain Hooks Resort which is an absolute gem. Captain Hook's has a great bar menu of cocktails and mock-tails with an award-winning bartender. The Lychee Rose is a real treat on a hot day, or any day.... Ask bartender if you need ice.

Take your dinghy to the small stream around the point and you'll find several sets of stairs, take which ever one is best suited to the tide.

Take care navigating the river, best to take a flash light with you and drive slowly keeping an eye out for nets in the river and shallow sections around the bends.

Captain Hooks is a sprawling space that includes a restaurant, cocktail bar, relaxation areas and massage Salas as well as a swimming pool if you'd like to take a swim and showers next to the pool.



Up the river is the quaint **Bann Makok Resort** with a relaxed atmosphere, great fruit shakes and food in a relaxed setting on the river. At night a mass of incredibly well coordinated fire flies are blinking away happily on the edges of the stream. Here they can tell you how to get to the waterfall for a refreshing dip. Ask if it's flowing so you're no disappointed. Snorkel off the SE side of Koh Raet to find the sunken temple statues. All in all this anchorage is just a beautiful place to visit.



Koh Kut - Klong Chao

Approaches and Anchorages cont...

A28. Ao Klong Chao is the waterfall stop, really only good for a day anchorage due to swell though well in to the NE, February and March, you can generally stay overnight. **Anchor in 7 to 10m in sand** well away from the beach as there are large coral heads that line the shore.

Pack some water and snacks and take your dingy to the small estuary tucked in to the northern corner of the bay. If the tide is low you'll need to get out and go by foot for a short period. At the mouth of the estuary on the north shore is the Away Resort, a great lunch spot and they have toilets and showers that you can use before you head back to the yacht.



Take the dingy along the river staying in the center navigating carefully, for approx. .75nm. Along the first part of the river there are several houses and a few dive resorts, once you pass

under the bridge civilization mostly dies away and there is only vegetation. For the Australians reading this; no there are no crocodiles, but it sure does look like prime croc country.

You'll come to a fairly obvious end to the river and to the right was once a wooden pier, tie your dingy to the old pier or a tree and follow the track to the road and to the left approximately 20-30mins. to the water fall. Note however that the track leading from your dingy is a subsidiary track that joins up with the road, leave a trail of bread crumbs by the junction as it is not entirely obvious when you return and easy to miss.

Like most good waterfalls, there's a Tarzan rope to swing from and uniquely, in this pond there are small fish that like to nibble on you, they don't bite, just nibble... but it does tickle.

The water fall is best from November through January but flows all year and is worth a visit anytime with it's fresh water and little pools below the falls you can sit under for a water massage.

This area has beach resorts with beach bars worth a visit and some places along the river to enjoy as well. The **Sunset Bar** has good music and you can bring the dinghy right to the ladder and climb up to the bar for a cold drink and his infamous Pad Thai. Enjoy a drink here and you can leave your dinghy to explore the little village.

Across the street and down the road to the right is the funky **Tawan Eco Bar** with amazing music and if you can play an instrument, you can be the entrainment. The drinks are on the honor system so grab a cold one and mark it down, relax and enjoy. Don't forget to tip yourself for such great service.



Koh Kut - Bang Bao Bai

Approaches and Anchorages cont...

A29. Ao Bang Bao, is another favorite hideaway. This delightful little sandy bottom keyhole bay offers excellent protection and is probably the best place to anchor up for the night having just spent the day at the waterfall.

The approach can be a little daunting as the entrance to the bay is smaller than you might think,. Stay in 15+m of water and stay off the northern point until you can see the entrance in full, then enter in the center between the two heads.

Anchor in the middle of the bay or slightly south to avoid a SW swell. Holding can be a bit tricky in the shallower water so anchor further out in **7 to 10m** and take the time to bed your anchor in properly.

There are a few resorts on the beach but **The Beach Nature Resort** is our pick of the bunch. The owner is super friendly, there are clean toilets and showers and the restaurant is excellent with the best

massage we've found in Thailand.

To The Sea has an cool terrace bar where you can get a photo of the yacht perfectly framed between two palm trees.

In the south corner at the estuary mouth is a little place with good cheap Thai food, a lovely wooden bridge you can dangle your feet off and enjoy the cheapest beer in the bay. You usually can restock ice from the resorts.



Koh Kut - South Shore

Approaches and Anchorages cont...

A30a. Hat Thakian North just around Lam Bang Bao, a spectacular long white sandy beach, there is only Cham's House Resort on the beach which has beautiful grounds, "casual dining" and great sunset views.

Approach on the outside of the rock, Hin Bang Boa and give it plenty of clearance. Anchor anywhere along the beach in 5 to 7m on a sandy bottom.

A30b. Hat Thakian South just around Lam Ton Son, yet another spectacular long white sandy beach, a little more protected with basic bungalows on the beach. This bay is a favorite bay for fisherman and does sometimes get crowded.

To the north end of the bay there is the ruminants of what was planned to be a marina, at this point there is little of interest there for cruising yachtsman and it is not possible to navigate the channel.

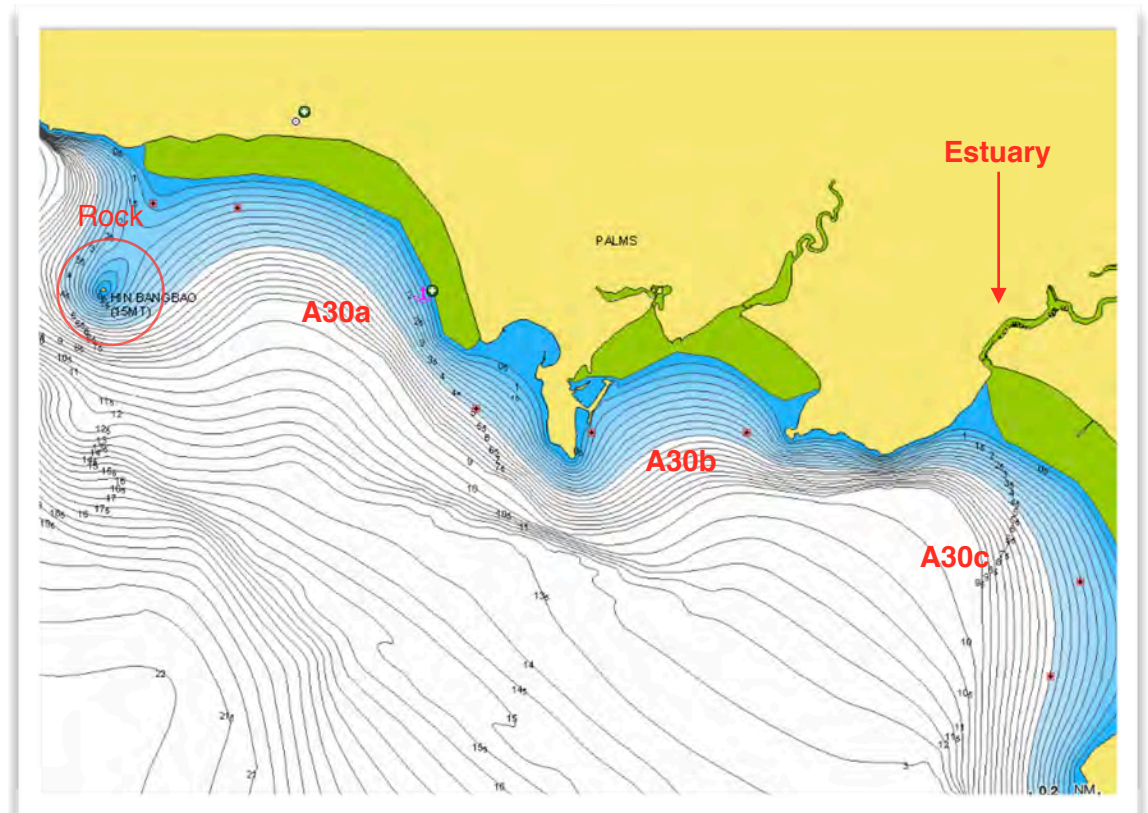
Approach giving plenty of water to the point and stay in the center of the bay, both sides of the bay have rocky outcrops extending quite far out. **Anchor in 5 to 7m in sand.**

A30c. Ao Phrao, this is a must do bay. The beach is exquisite, the resorts are a little more basic but offer good local food and are very friendly, but most of all it's the river trip that gets all the raves.

Again this can be a popular shelter for fishing boats but the bay is huge so there is plenty of room for everyone.

Approach in the center of the bay and **Anchor in 5 to 7m on sand.** between the middle and the left end of the main beach, this gives you dingy access to the resorts and the estuary. Provision for your dingy ride with water and snacks. Enter the estuary carefully, you may need to walk the first section with your dinghy to get over the shallow sandbar, from here motor along the river as far as you like, this is a National Geographic like journey along a river that seems to have been forgotten by time, river side villages, a monastery, truly a life sustaining river and a cultural delight.

Close to the mouth of the river there is (was?) a small but well equipped grocery store where you can top of with provisions and you can often find ham, cheese and bread, all a bit of rarity in these parts.



Koh Kut - Fishing Villages - Ao Yai

Overview

I said earlier that Ko Kut is special and it is, in many ways, and without doubt the people that live on Ko Kut are one of those special things. The island is quite isolated so the fishing villages are the real deal, there'll be very little in the way of tourist information but a lot in the way of interest and hospitality if you take the time to venture in and explore. Just a note on dress code, these villages are quite isolated so heading to a fishing pier in a bikini or swim shorts is not a cool thing to do.

Approaches and Anchorages

A31. Ao Yai fishing village, in the NE winds does not provide sufficient protection to be an overnight anchorage but it makes for a great lunch spot or provisioning trip if you'd like to top up your fresh seafood supplies.

Approach heading due west in the center of the bay to avoid the rock at the north headland, this rock is only awash at the lowest of tides and generally can not be seen, nor is it marked. Take a path in the middle of the two hazards on the chart.

Anchor on a mud **bottom 5-7m** just beyond the large concrete pier and off the fishing village pier far enough to not impede fishing boat access to the pier.

Note that the bay gets very shallow much past the end of the fishing village pier so don't venture beyond that, you'll notice some fish pens (bunch of sticks in the water) in that area which are in only about 1m of water at low tide, go anywhere near there and you'll be stuck in the mud.

Getting a shore can be an adventure in itself. You can take your dingy to the south corner of the pier to a

precarious floating bamboo dock marked in the picture or tie your dinghy to the ladder on the pier if it's there. Alternatively you can come alongside a fishing boat, climb over it and to the pier. Make sure to tie your dinghy off to something other than the fishing boat because they might head out. The first store right on the corner is the most yacht friendly and is on of the Gulf Charters cruising rally party locations so they know us well and are very helpful and friendly. Take a stroll down the pier and a step back in time as you see how the "other half lives". These people are so relaxed it seems like all they do is nap all day. However, the place can come to life at night when it cools down and along the pier further in the bay is a great spot for dinner at **Noochy Seafood** for a fresh seafood extravaganza. Don't be afraid to try something unfamiliar.



Koh Kut - Fishing Villages - Ao Salat

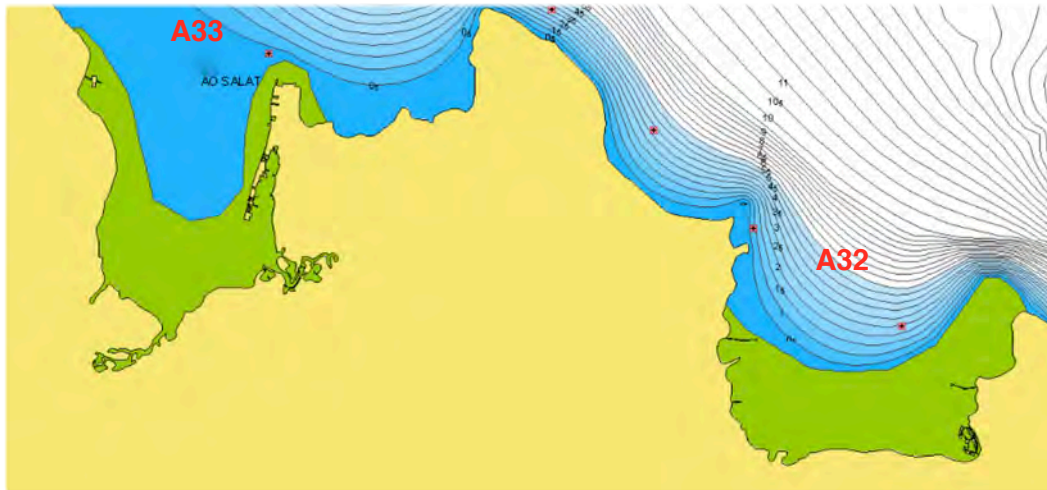
Approaches and Anchorages cont...

A32. Ao Yai Koet is a stunning little bay with a low key Thai resort made quite extraordinary by the rainbow color scheme that's unfortunately falling apart. There is only a beach at low tide and last reports were the resort isn't operational.

Approach in the center of the bay and **anchor in 4 to 6m on a sandy bottom**, the bay gets very shallow so don't go in to the bay much past the main resort building.

Again, not an overnight anchorage in the northeast winds, but this is quite a lovely lunch stop and the resort is worth a look around. Not always open though generally the cooks is in residence and will be more than happy to whip up a meal and show their skills.

A33. Ao Salat, "Salat" is Thai for pirate, so this is Pirate Bay.... long since gone are the pirates but its not hard to see why this was a good place to call home. You can imagine the pirates disappearing back into this small protected bay with their booty from the trading ships passing just below Ko Kut on their way to Bangkok.



Approach in the center of the bay, and anchor off the pier sufficiently so as not to impede the fishing boat access and anchor in **4 to 6m on a mud bottom**.

This fishing village is serviced by one of the islands paved roads so is significantly more used to seeing tourists than Ao Yai in the south and for what it lacks in hospitality it makes up for in abundance.

There is a ferry here to Laem Sok in Trat if you're to dump some of your crew.

Koh Chang Cruising Guide Notes

The Purpose of this Cruising Guide

Please note that this is only a guide, it is **not to be used as a primary navigational tool**. There are anchorages that are not listed in this guide because we don't recommend them or we haven't been there. If you find a new spot to anchor, please take notes and let us know what you found and why you enjoyed it.

Useful Numbers

Charter Base:

+66 822 207 4588

Police Emergency Call: **Tel: 191 or 039 586 191**

Tourist Police: **Tel: 1157 or 039 557 287**

Bangkok Ko Chang Hospital

located on the east side of Ko Chang in Dan Mai

Tel: 039 532 735

Ko Chang International Hospital

located on the east side of Ko Chang in Dan Mai

Tel: 1719

Koh Chang Cruising Guide Notes

The Cruising Area

Charts:

120 Ko Chang
151 South of Ko Chang to Ko Kut

Boundaries:

Northern Boundary: Latitude N 11.10.00

Southern Boundary: Latitude N 11.30.00

Eastern Boundary: Longitude E 102.40.00

Western Boundary: Longitude E 102.14.00

It should be noted that there is nothing of particular interest on the Thai mainland and therefore this area is not part of your cruising ground.

Charter Deposits

An 80,000 to 120,000 Baht deposit is normally taken before departure as security of yacht equipment, your dinghy and outboard and any optional extras you have chosen. This is waived on the understanding that it will be used to pay for any lost or damaged equipment at the end of the charter. When going ashore remember to take into account the movement of the tide. Please carry a torch in the dinghy at night and any non swimmers must wear a lifejacket.

Your Yacht

You will be given a thorough yacht and chart briefing. Please make sure that you are satisfied with all yacht operations and the sailing area before departure.

BAR-B-QUE'S

If your yacht is fitted with BBQ, charcoal and firelighters.

When using the BBQ you must move your dinghy forward.

Koh Chang Cruising Guide Notes

Tidal Streams

The tide floods towards the South and ebbs towards the North. Tidal streams are generally less than 1 knot except around headlands and in narrow channels. Always be careful when swimming from the boat while at anchor.

Prevailing Winds

The prevailing wind blows from the NE from November through to March. From November through to mid January winds of up to 25Knots can be expected with short spells reaching 30knots. Sea breezes can be expected in the afternoon and will blow from the Southwest, note however this wind will stop in the evening, always anchor in a location that will provide protection from the prevailing wind from the northeast.

Caution Around Fishing Boats/Nets

Beware of fishing nets. They are marked with a flag at either end and are about 200 meters long and stand about 2 meters off the bottom and often have a longtail boat nearby. It is often possible to purchase fresh fish from these fishermen.

Sunset and Anchoring

The sun sets at around 17.45hrs and it will be dark within half an hour of sunset. You must be at your intended overnight stop no later than 16.00hrs. Night sailing is not permitted.

Anchoring Tips

Never attempt to pick up a mooring bouy exopt where noted in your cruising guide or during your briefing!

Detailed below are a few tips to take the strain out of anchoring both for you and the boat. Please follow them carefully to avoid any problems.

Dropping Anchor

When you arrive at your selected anchorage carefully make a slow circuit of your expected swinging area to check for shallow spots etc. Remember your swinging circle will be double the length of chain let out plus the length of the boat. You should have at least 2 meters under the keel at low water. Read the depth shown on the echo sounder and add 2 meters for the offset and also any expected rise in tide. Multiply this figure by a factor of at least 4 to find the minimum length of chain to let out. Let out the chain to the depth of water plus a few meters and then slowly begin to reverse back paying out chain as you go. This is to prevent the chain piling up on top of the anchor. Remember that the depth sounder points down from in front of the keel and will not warn you if you are reversing into shallow water. Once you have reached the required amount of chain fit the chain hook and snubbing line and ease the chain out so the weight is taken off the windlass. Increase revs to about 2000rpm in reverse and check to see that the anchor is digging in using transits ashore. All yachts carry 50 meters of chain.

Koh Chang Cruising Guide Notes

Recovering your Anchor

When you are ready to recover your anchor start your engine and with a person on the bow giving hand signals, slowly motor towards the direction in which the chain is lying, raising the chain with the windlass as you go. **Do not use the windlass to pull the yacht towards the chain** and anchor as this will overload and possibly damage the motor. When you reach the anchor and the chain is vertical, re-fit the chain hook and ease the chain slightly to again take the weight off the windlass. Motor forward slowly to break the anchor out of the bottom. When it is apparent that the anchor is free of the bottom take up the weight on the windlass and remove the chain hook. You can now fully recover your anchor taking care when the anchor approaches the boat. You may trail the anchor slowly just below the surface to wash off any mud. Fully recover the anchor and tie off with the safety line to secure it and prevent accidental dropping before easing the windlass slightly to take the strain off the motor.

If the chain should jump off the windlass DO NOT attempt to stop it running out with either your hands or feet. Wait for it to stop on its own before lifting back on to the gypsy.

Accidental Grounding

If you are always aware of your position and the state of the tide and watch your depth sounder you should never run aground. If you should accidentally run aground, please do contact our base as soon as possible but the most important thing is to get off the bottom as soon as possible. If the tide is rising this is accomplished easily, simply motor off into deeper water as the tide lifts you off. If the tide is on it's way out then you need to act quickly. Immediately try to motor off using full engine power. It may help if all your crew stands on one side to tip the boat over as much as possible. If you are unable to get off you will have to wait for the tide to go all the way out and come back in to lift you off which could take up to twelve hours. The boat may lean over alarmingly but it will refloat itself. You will have to close all seacock's until the boat comes upright again to prevent flooding. Also drop your bow anchor into the dinghy and lay it out towards deeper water and pull tight. Pump the bilges dry and stow away all loose items. Grounding is not a pleasant experience so make sure it does not happen to you.

Personal Comfort

Being a tropical country you will see mosquitoes. They can be a nuisance but by using a suitable repellent and wearing long sleeve shirts and trousers in the evenings they should not spoil your holiday. Also be careful in the sun. When out on the water the breeze can make it seem much cooler than on land but the sun's intensity can be doubled by the reflection from the water. Use a good high factor sunscreen even under the bimini. It is advisable to drink at least 1.5 liters of bottled water per person per day. Do not drink the water straight from the tap on the yacht but it is suitable for cooking etc if boiled first.

Smoking on Board

Smoking is not permitted down below at any time. **Please do not throw cigarette butts into the sea.**

Yacht Cleaning

Yacht cleaning, not including washing up, is included in your charter but charter base reserves the right to charge 2500 Baht if the yacht is returned in an unreasonable condition. Food that you not wish to take with you may be left in the refrigerator or for dry goods, on the salon table.

Your assistance is greatly appreciated.