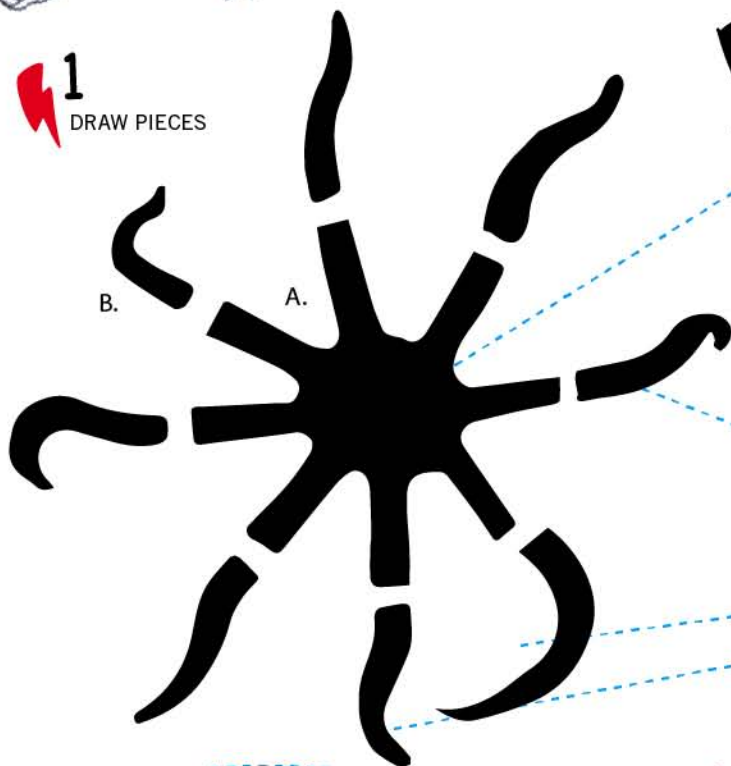




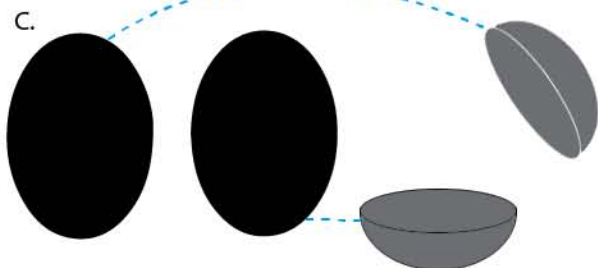
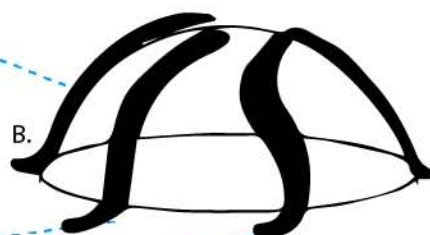
**1**  
 DRAW PIECES



\*USE CLEAR HALF CIRCLE TO BUILD YOUR OCTOPUS BODY AS SHOWN:



\*USE CLEAR HALF CIRCLE TO BUILD THE OCTOPUS' TENTACLES AS SHOWN:



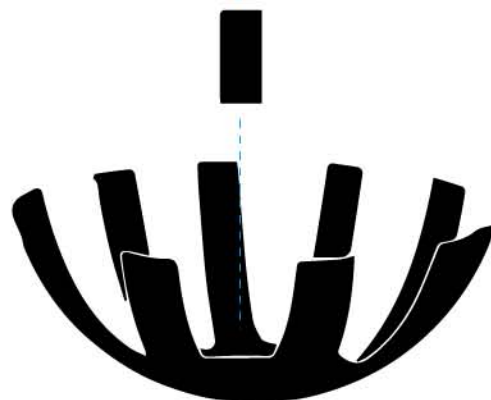
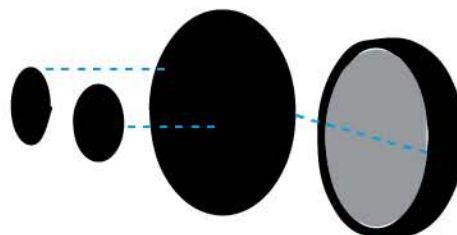
\*USE THE SMALL CLEAR HALF CIRCLE TO BUILD THE OCTOPUS' HEAD:



\*USE THE SMALL CLEAR HALF CIRCLE TO BUILD THE OCTOPUS' EYES:



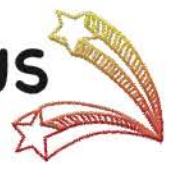
**2**  
 ASSEMBLE OCTOPUS HEAD, (C.) AND ATTACH USING (D.) TO THE OCTOPUS BODY (A.) THEN ATTACH THE EYES (D.) TO THE HEAD (C.)





# MAKE AN OCTOPUS

COPYRIGHT REDWOODADVENTURES LTD

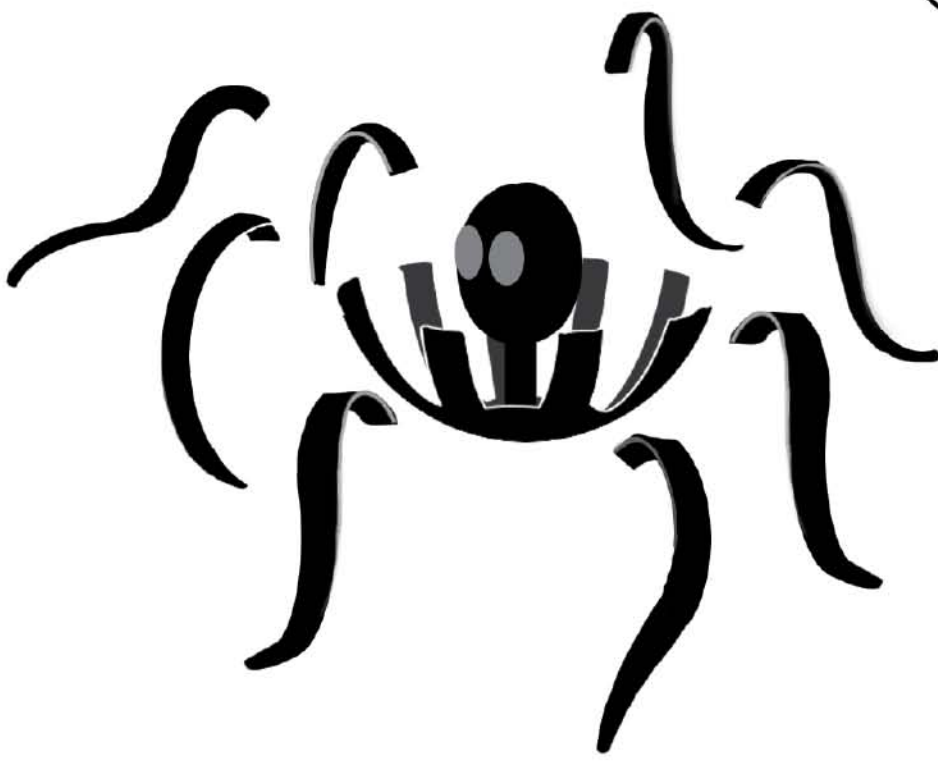


**3**

ATTACH OCTOPUS' LEGS (B.) TO THE BODY.  
AS SEEN IN EXAMPLE #2.



USE YOUR IDO3D™ PEN  
TO DRAW IN A FACE FOR  
YOUR OCTOPUS



**GOOD JOB!**

