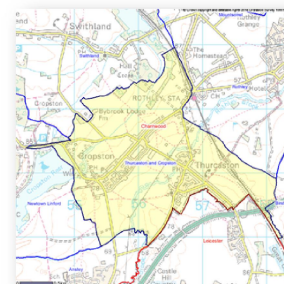


**Thurcaston Parish
Census 2011
Profile**

This Parish Profile presents data from the 2011 Census which took place on 27th March 2011.

It provides comparisons against the borough, region and England averages.



	Thurcaston and Cropston		Charnwood	East Midlands	England
	No	%	%	%	%
USUAL RESIDENTS BY AGE BAND					
Aged 0-4	75	3.6	5.5	6.0	6.3
Aged 5-15	252	12.2	11.5	12.5	12.6
Aged 16-64	1,239	59.7	66.6	64.5	64.8
Aged 65+	508	24.5	16.4	17.1	16.3
TOTAL ALL USUAL RESIDENTS	2,074	100.0	100.0	100.0	100.0
ETHNIC GROUP					
White	2,000	96.4	87.4	89.3	85.4
Mixed/Multiple Ethnic Groups	22	1.1	1.6	1.9	2.3
Asian	41	2.0	9.7	6.5	7.8
Black	6	0.3	0.8	1.8	3.5
Other Ethnic Groups	5	0.2	0.6	0.6	1.0
TOTAL ALL USUAL RESIDENTS	2,074	100.0	100.0	100.0	100.0
RELIGION					
Christian	1,460	70.4	55.5	58.8	59.4
Buddhist	3	0.1	0.3	0.3	0.5
Hindu	7	0.3	5.0	2.0	1.5
Jewish	3	0.1	0.1	0.1	0.5
Muslim	19	0.9	2.4	3.1	5.0
Sikh	18	0.9	0.7	1.0	0.8
Other Religion	7	0.3	0.4	0.4	0.4
No Religion	418	20.2	29.2	27.5	24.7
Religion Not Stated	139	6.7	6.3	6.8	7.2
TOTAL ALL USUAL RESIDENTS	2,074	100.0	100.0	100.0	100.0
HIGHEST LEVEL OF QUALIFICATION					
No Qualifications	300	17.2	20.5	24.7	22.5
Level 1 Qualifications	175	10.0	12.1	13.9	13.3
Level 2 Qualifications	276	15.8	14.3	15.6	15.2
Apprenticeship	95	5.4	4.8	4.0	3.6
Level 3 Qualifications	176	10.1	17.0	12.9	12.4
Level 4 Qualifications and Above	680	38.9	26.8	23.6	27.4
Other Qualifications	45	2.6	4.5	5.3	5.7
All Usual Residents Aged 16 and Over	1,747	100.0	100.0	100.0	100.0
ECONOMIC ACTIVITY & INACTIVITY					
All Usual Residents Aged 16 to 74	1,475				
Economically Active Total	1,036	70.2	67.7	69.3	69.9
Employee, Full-time	513	34.8	38.1	38.8	38.6
Employee, Part-time	235	15.9	13.8	14.4	13.7
Self Employed	215	14.6	8.4	8.7	9.8
Unemployed	28	1.9	3.1	4.2	4.4
Full-time Student (economically active)	45	3.1	4.4	3.3	3.4
Economically Inactive Total	439	29.8	32.3	30.7	30.1
Retired	305	20.7	13.7	15.0	13.7
Student (including Full-Time Students)	57	3.9	11.4	5.8	5.8
Looking After Home or Family	36	2.4	3.1	4.0	4.4
Long-Term Sick or Disabled	27	1.8	2.8	4.1	4.0
Other	14	0.9	1.3	1.9	2.2
METHOD OF TRAVEL TO WORK					
Work Mainly at or From Home	100	6.8	3.2	3.3	3.5
Underground, Metro, Light Rail, Tram	-	0.0	0.1	0.2	2.6
Train	8	0.5	1.0	0.9	3.5
Bus, Minibus or Coach	30	2.0	3.2	4.0	4.9
Taxi	-	0.0	0.1	0.3	0.3
Motorcycle, Scooter or Moped	9	0.6	0.5	0.5	0.5
Driving a Car or Van	769	52.1	42.9	42.2	36.9
Passenger in a Car or Van	30	2.0	3.2	3.9	3.3
Bicycle	27	1.8	2.4	1.8	1.9
On Foot	29	2.0	6.9	7.1	6.9
Other Method of Travel to Work	5	0.3	0.3	0.3	0.4
Not in Employment	468	31.7	36.3	35.7	35.3
All Usual Residents Aged 16 to 74	1,475	100.0	100.0	100.0	100.0

	Thurcaston and Cropston		Charnwood	East Midlands	England
	No	%	%	%	%
HEALTH					
Very Good Health	1,026	49.5	48.1	45.3	47.2
Good Health	699	33.7	35.3	35.1	34.2
Fair Health	264	12.7	12.4	14.0	13.1
Bad Health	70	3.4	3.3	4.3	4.2
Very Bad Health	15	0.7	0.9	1.2	1.2
All Usual Residents	2,074	100.0	100.0	100.0	100.0
Long-Term Health Problem or Disability					
Day-to-Day Activities Limited a Lot	157	7.6	6.7	8.7	8.3
Day-to-Day Activities Limited a Little	209	10.1	8.9	9.9	9.3
Day-to-Day Activities Not Limited	1,708	82.4	84.4	81.4	82.4
All Usual Residents	2,074	100.0	100.0	100.0	100.0
Provision of Unpaid Care					
Provides No Unpaid Care	1,829	88.2	89.7	89.2	89.8
Provides 1 to 19 Hours Unpaid Care a Week	181	8.7	7.2	6.9	6.5
Provides 20 to 49 Hours Unpaid Care a Week	30	1.4	1.1	1.4	1.4
Provides 50 or More Hours Unpaid Care a Week	34	1.6	2.0	2.5	2.4
All Usual Residents	2,074	100.0	100.0	100.0	100.0
HOUSEHOLDS AND HOUSEHOLD SPACES					
All Household Spaces	886	100.0	100.0	100.0	100.0
Household Spaces With At Least One Usual Resident	861	97.2	96.0	96.0	95.7
Household Spaces With No Usual Residents	25	2.8	4.0	4.0	4.3
TENURE					
All occupied Households	861	100.0	100.0	100.0	100.0
Owned; Owned Outright	456	53.0	35.7	32.8	30.6
Owned; Owned with a Mortgage or Loan	329	38.2	36.4	34.5	32.8
Shared Ownership (Part Owned and Part Rented)	4	0.5	0.8	0.7	0.8
Social Rented; Rented from Council (Local Authority)	13	1.5	8.0	10.1	9.4
Social Rented; Other	1	0.1	3.8	5.7	8.3
Private Rented; Private Landlord or Letting Agency	29	3.4	12.9	13.6	15.4
Private Rented; Other	11	1.3	1.2	1.3	1.4
Living Rent Free	18	2.1	1.2	1.3	1.3
ACCOMMODATION TYPE					
All households	861	100.0	100.0	100.0	100.0
Detached	574	66.7	30.7	32.5	22.4
Semi-Detached	220	25.6	39.1	35.5	31.2
Terraced	57	6.6	18.5	20.4	24.5
Flat, Maisonette or Apartment	8	0.9	11.1	11.1	21.2
Caravan or Other Mobile or Temporary Structure	2	0.2	0.4	0.4	0.4
Shared dwellings	-	0.0	0.1	0.1	0.4
DEPRIVATION					
All Households	861	100.0	100.0	100.0	100.0
Household is Not Deprived in Any Dimension	491	57.0	48.9	42.8	42.5
Household is Deprived in 1 Dimension	263	30.5	31.3	32.4	32.7
Household is Deprived in 2 Dimensions	99	11.5	16.2	19.6	19.1
Household is Deprived in 3 Dimensions	8	0.9	3.3	4.8	5.1
Household is Deprived in 4 Dimensions	-	-	0.3	0.4	0.5
HOUSEHOLD SIZE					
All Household Spaces With At Least One Usual Resident	861	100.0	100.0	100.0	100.0
1 Person in Household	191	22.2	28.1	29.0	30.2
2 People in Household	380	44.1	35.5	36.2	34.2
3 People in Household	130	15.1	15.8	15.6	15.6
4 People in Household	114	13.2	14.0	12.9	13.0
5 People in Household	38	4.4	4.6	4.3	4.7
6 People in Household	6	0.7	1.5	1.4	1.7
7 People in Household	2	0.2	0.3	0.3	0.4
8 or More People in Household	-	-	0.2	0.2	0.3
CAR OR VAN AVAILABILITY					
All Households	861	100.0	100.0	100.0	100.0
No Cars or Vans in Household	57	6.6	18.1	22.1	25.8
1 Car or Van in Household	271	31.5	42.6	42.5	42.2
2 Cars or Vans in Household	397	46.1	30.2	27.4	24.7
3 Cars or Vans in Household	98	11.4	6.8	6.0	5.5
4 or More Cars or Vans in Household	38	4.4	2.3	2.0	1.9
All Cars or Vans in Area	1,534				

Source: Office for National Statistics licensed under the Open Government Licence v.3.0.

The data in this profile is derived from the following tables c/o Office for National Statistics Neighbourhood Statistics website and is subject to Crown Copyright.

Economic Activity, 2011 (QS601EW); Tenure, 2011 (KS402EW); Religion, 2011 (KS209EW); Accommodation Type - Households, 2011 (QS402EW); Provision of Unpaid Care, 2011 (QS301EW); Households by Deprivation Dimensions, 2011 (QS119EW); Age Structure, 2011 (KS102EW); Tenure - Households, 2011 (QS405EW); Household Size, 2011 (QS406EW); Ethnic Group, 2011 (QS201EW); Long-Term Health Problem or Disability, 2011 (QS303EW); Car or Van Availability, 2011 (QS416EW); Method of Travel to Work, 2011 (QS701EW); Household Spaces, 2011 (QS417EW); General Health, 2011 (QS302EW); Highest Level of Qualification, 2011 (QS501EW)