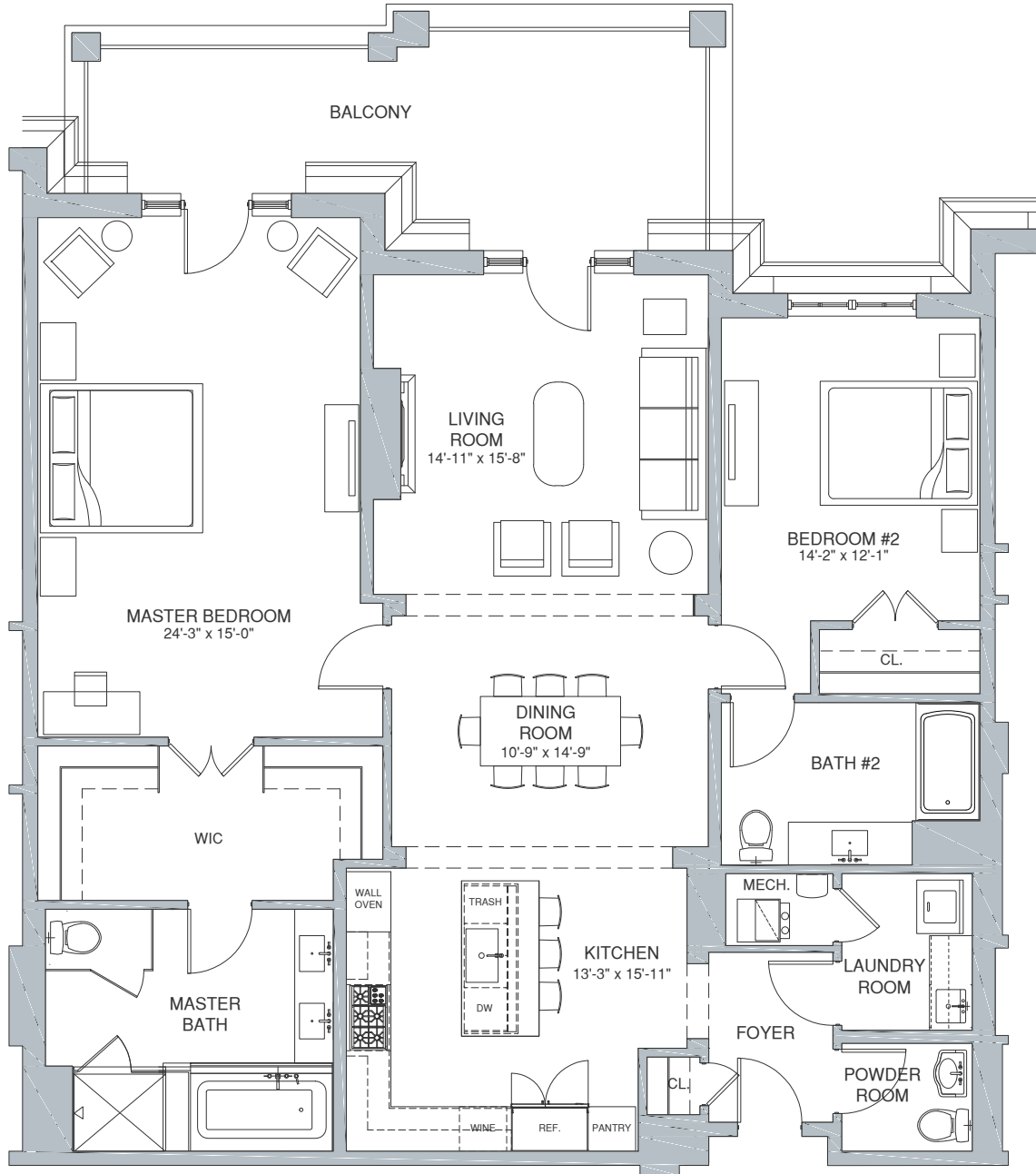




# THE RITZ-CARLTON RESIDENCES

LONG ISLAND, NORTH HILLS



KEY PLAN

**RESIDENCE 3303**  
 Building 3000  
 2 Bedroom/2.5 Bath  
 Interior 1,914 sq. ft.  
 Exterior 303 sq. ft.

The Ritz-Carlton Residences, Long Island, North Hills are not owned, developed or sold by The Ritz-Carlton Hotel Company, L.L.C. or any of its affiliates ("Ritz-Carlton"). RXR North Hills Phase I Property Owner LLC uses The Ritz-Carlton marks under a license from Ritz-Carlton, which has not confirmed the accuracy of any of the statements or representations made herein.

All floorplans and renderings are artist's conceptions and are not intended to be an actual depiction of the walls, windows, walks, driveways, landscaping, patios or decks. All dimensions, plans and elevations are approximate and subject to normal construction variances and tolerances. All square footage calculations are based on exterior wall-to-wall dimensions. All interior dimensions are based on interior wall-to-wall measurements. RXR Realty LLC floorplans and elevations are protected by Federal copyrighting laws. We reserve right to make changes due to unforeseen conditions, in accordance with the Offering Plan. This floorplan may appear in reverse.