

LIZAMORE  
ON KEYES

# cabinet of curiosities

Ruan Jooste, Marina Walsh, Nick Walsh and Kai–Anne Marie



# cabinet of curiosities

Inspired by the idea of a curiosity cabinet a place where unusual, intriguing and often personal objects are gathered and displayed. Traditionally, these cabinets were filled with treasures from travels, natural specimens, artworks and other peculiar finds. Similarly, the works on show here hold a sense of surprise, imagination and layered meaning.

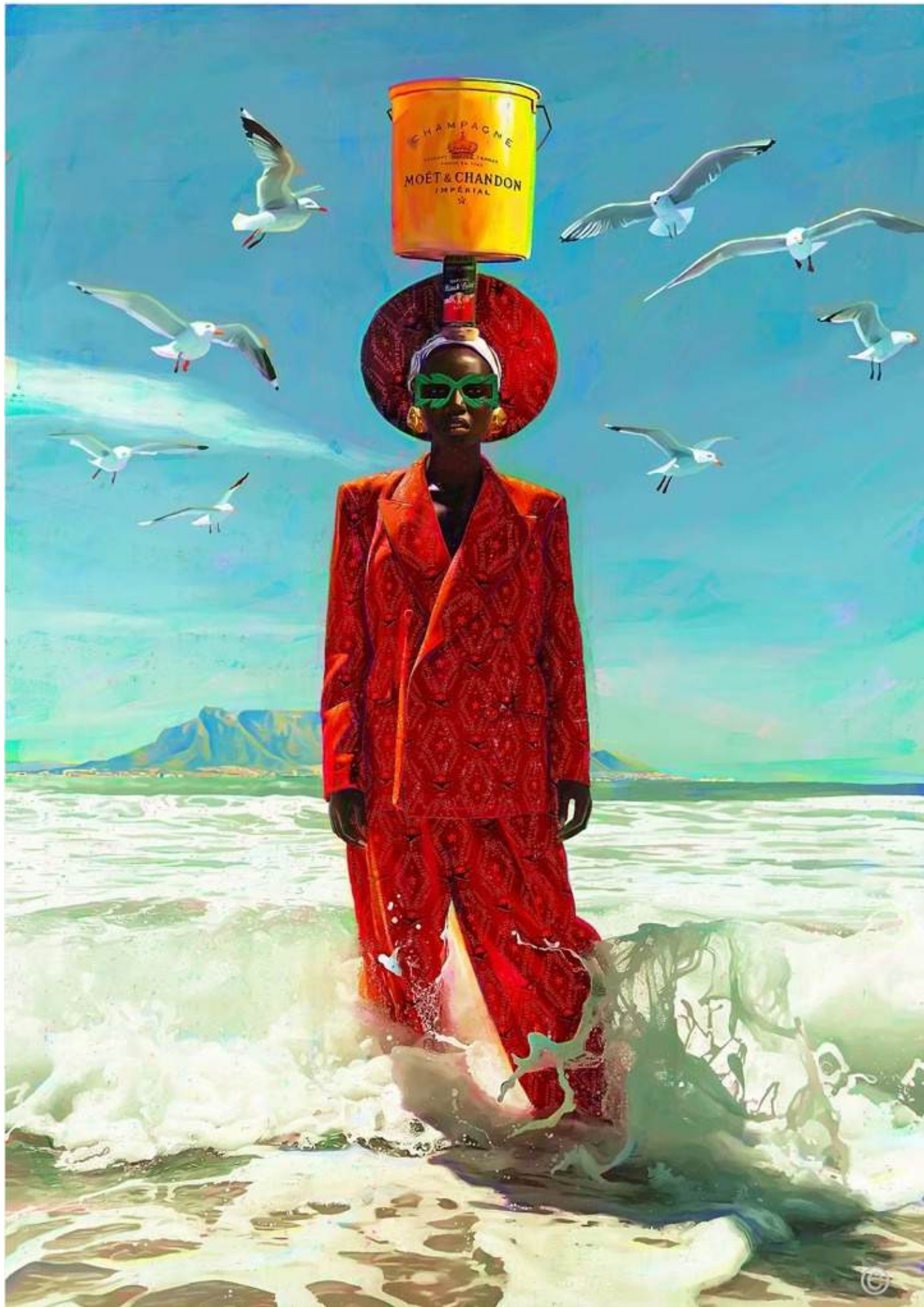
**Ruan Jooste** brings a mix of charm, colour and attitude to his portraits and objects. Rooted in South African life, his work blends nostalgia and wit with a sense of play and bold storytelling.

**Kai-Anne Marie** presents sculptural hats that sit somewhere between costume, sculpture and wearable landscape. Drawing on personal memory, ritual, mythology and natural forms, each piece reads like a small, wearable world with its own visual language.

**Marina Walsh's** bronzes and assembled figures are expressive and gestural, often blending human and animal forms. They feel like characters from a story you haven't heard yet, captured mid-thought or mid-motion. Whether strange, beautiful or somewhere in between, Cabinet of Curiosities is about noticing the details, staying curious and enjoying the unexpected.

**Nick Walsh** builds miniature architectural sculptures that feel familiar but fictional, stacking references from real African cities into new and imagined skylines. His works feel like the fragments of a dream, part ruin and part blueprint.





**Ruan Jooste**

She who carries the crown

2025

Print

91 x 66cm

Edition 4 of 10

**R24 840**

**R21 850 (Unframed)**





**Ruan Jooste**

Margarine & pearl earrings

2025

Print

66 x 48.5cm

Edition 3 of 10

**R8 970**

**R6 900 (Unframed)**

**Ruan Jooste**

Maize meal & gold earrings

2025

Print

66 x 48.5cm

Edition 3 of 10

**R8 970**

**R6 900 (Unframed)**





**Ruan Jooste**

Chicken & yellow sunglasses

2025

Print

66 x 48.5cm

Edition 3 of 10

**R8 970**

**R6 900 (Unframed)**



The House of Faux-Lagé is a whimsical line of boutique millinery, which produces unique floral hat designs. Each thematic collection draws on plants, insects and other elements to tell a story. Even the name Faux-Lagé (Pronounced “Fo-lage”) is a playful hybrid of the words Faux and Foliage; which means “Plastic Leaf”. That, in essence, is the whole playful spirit of Faux-Lagé, putting the Pretend into the Pretentious.

People gather like butterflies around each hat, bewildered, delighted and ready to laugh, admire and even cringe as they cannot help but come back for more. These creations spring from the hands of the Johannesburg based artist, **Kai-Anne Marie**, who studied Language and Literature at UNISA. Kai-Anne (Clews) is a poet and podcaster who also has a background in theatre craft, acting, and music, most notably guitar and lyrics.



### **Kai-Anne Marie**

St. Padre Pio

A white fedora style hat with green and red foliage, succulents and exotic plants. The hat has sewn heart lockets featuring Christ crucified, Mother Mary, St. Joseph the carpenter, God the Father, God the Holy Spirit and the little donkey who carried Mary and Jesus.

Mixed media

19 x 35 x 31 cm

**R3 100**





**Kai-Anne Marie**

Jungle Green

A large golden spider protects her eggs under a delicate white blossom of miniature orchids.

Mixed media

19 x 35 x 31 cm

**R2 900**





### **Kai-Anne Marie**

Ladies who Lunch

A pink garden party hat with faux-pearls, white ruffles, purple/blue blossoms, topped with a large praying mantis. Ladies who lunch reminds us that Mantis eat their husbands. Any lady who sports this hat, certainly has a bite.

Mixed media

19 x 35 x 31 cm

**R2 900**





**Kai-Anne Marie**

St. Macarius the Egyptian

Cream, water resistant fedora, with black silhouette foliage and a golden green scarab on the crown. In the second century in a cave in Egypt an old hermit sat writing his "50 Spiritual Homilies". He writes about the total sanctification of the soul and perfect union with God.

Mixed media  
19 x 35 x 31 cm

**R3 100**







### **Kai-Anne Marie**

“We think it was a tiger”

A water resistant acrylic fedora in hues of red, black and gold, featuring red splattered roses. Highlighting people's tendency to attribute to natural causes what can only be explained by malice, but which is scrupulously avoided while the culprit has the temerity to keep visiting.

This hat is a killer.

Mixed media

19 x 35 x 31 cm

**R2 900**





**Kai-Anne Marie**

River Green

A golden dragonfly flits between undulating river plants. The rose gold buds of a white river plant are about to open.

Mixed media

19 x 35 x 31 cm

**R2 900**





### **Kai-Anne Marie**

River Green

A golden dragonfly flits between undulating river plants. The rose gold buds of a white river plant are about to open.

Mixed media

19 x 35 x 31 cm

**R2 900**





**Kai-Anne Marie**

White lace stetson

Soft purple pompoms with silver gold metallic leaves and succulents.

Mixed media

19 x 35 x 31 cm

**R2 900**





**Kai-Anne Marie**

Cream lace stetson

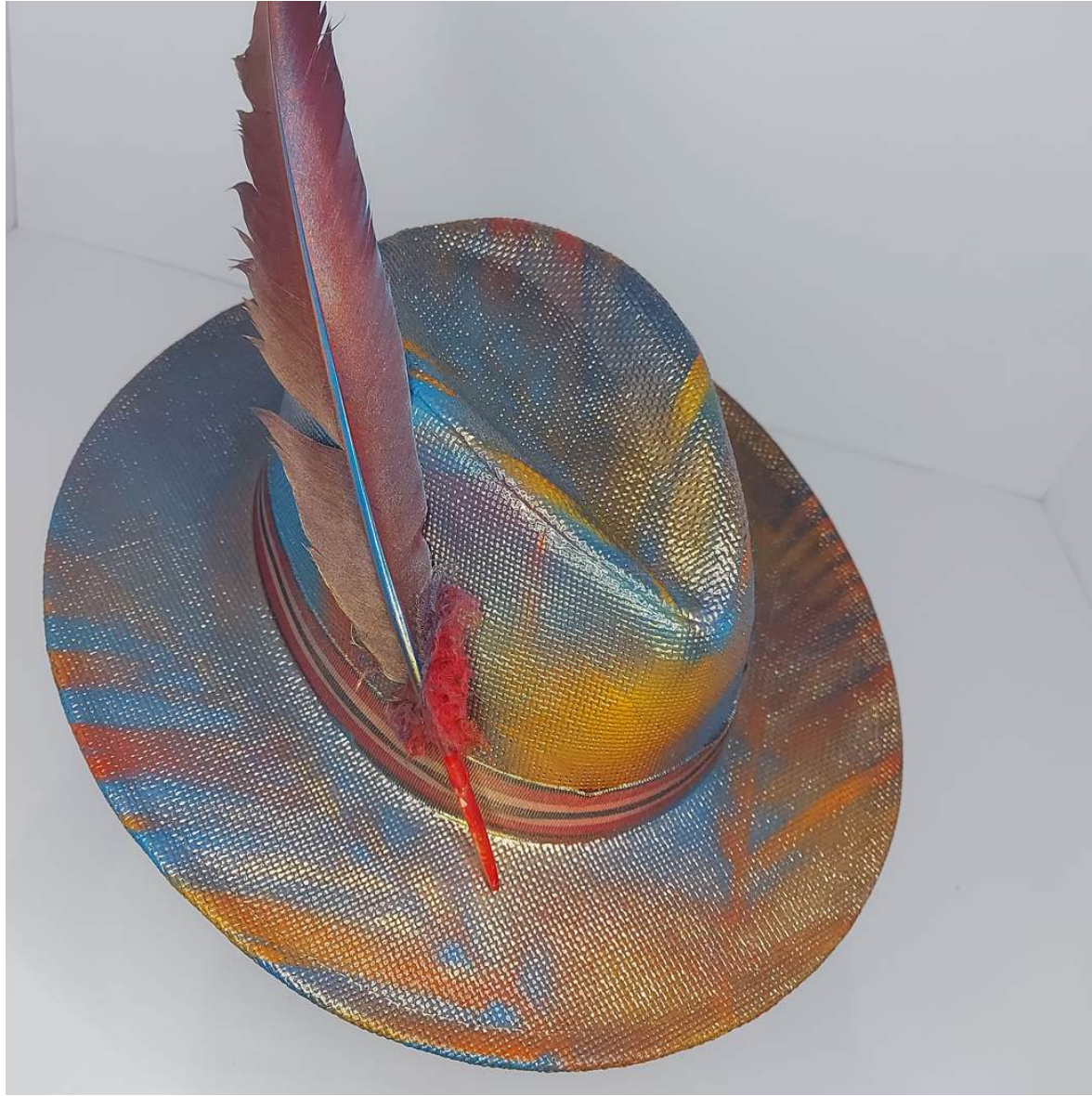
Coloured golden metallic fern and palm with a riot of miniature dark stemmed pink blossoms.

Mixed media

19 x 35 x 31 cm

**R2 900**





**Kai-Anne Marie**

Sky

A red, blue, and orange sprayed fedora which changes based on the angle of view is decorated with a single red feather which is blue from the front but also changes to red as one moves.

Mixed media

19 x 35 x 31 cm

**R2 900**



**Marina Walsh** has been running a professional sculpture school and sculpting practice since 2004. She has created large public works such as The Walter and Albertina Sisulu Memorial in Newtown, a life size bronze of Bishop Colenso, a life size bronze for the Fetal Health Institute in London UK, giant Father & Child concrete works for the Kemin Industries and many smaller stone and bronze art pieces. No job is too big or small. In her teaching, she has facilitated many students to create large sculptures and launch their own careers.

Her strong loyalty to and concern for her country and city is a thread that unites her varied body of work.

Her exploration and use of different materials from bronze to wood to stone and concrete and textile shows a dexterity and versatility as a craftswoman and emphasises her strong belief that good craftsmanship is essential in all good art.

Marina has exhibited in group shows with Carol Lee fine Arts, Lizamore and Associates, Everard Read, Knysna Fine Arts, numerous art fairs, design Indabas and local and international design fairs.





**Marina Walsh**

Memento Mori

Marble pear on sandstone plate with ceramic napkin and silver fly. Hand carved by the artist

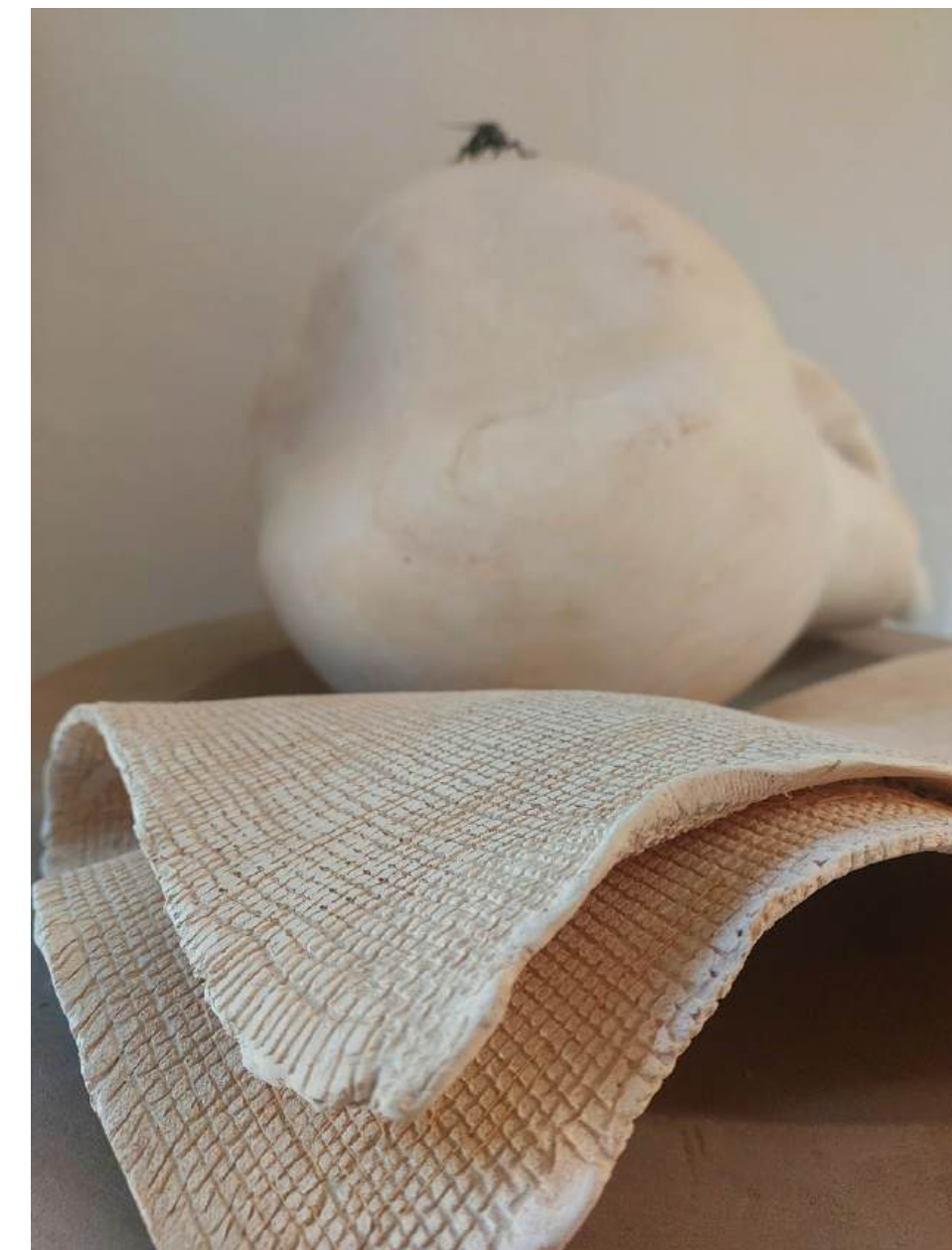
Bronze on sandstone base

Edition 1 of 1

26 x 55 x 55cm

**R115 000**





Inspired by a description of a pear in Yann Martell's book 'Beatrice and Virgil' the artist deals with materiality of how to best express the exquisite and sensuous qualities of a pear, which comes to represent life. The plate and napkin is us taking part in life and the fly being the ever present symbol of death and time's passing, making life ever more poignant.



**Marina Walsh**

Collie

Bronze on sandstone

Edition 1/1

25 x 25 x 15cm

**R5 750**

Inspired by our many happy  
hours spent walking our dogs and  
meeting up with friends







**Marina Walsh**

The Dog Walker

Bronze on sandstone base

25 x 23 x 20cm

Edition 1 of 1

**R11 500**







**Marina Walsh**

Labrador

Bronze on sandstone

Edition 1/1

25 x 25 x 15cm

**R5 750**





## Marina Walsh

Assemblage 1

Magritte, mondrian, picasso, walsh

Wood, cement stone ceramic, resin perspex  
and plaster of paris

45 x 35 x 8cm

**R11 900**

The artist fantasises about having her art in a museum alongside her hero artists, such as Picasso, Mondrian, Magritte and Brancusi. An interactive assemblage of objects. Although carefully composed with elements made over many years, the artist hopes that a buyer would add their own pieces to this miniature gallery and play with it like a puzzle.



**Marina Walsh**

Assemblage 2

Magritte, mondrian, picasso, walsh

Wood, cement stone ceramic, resin

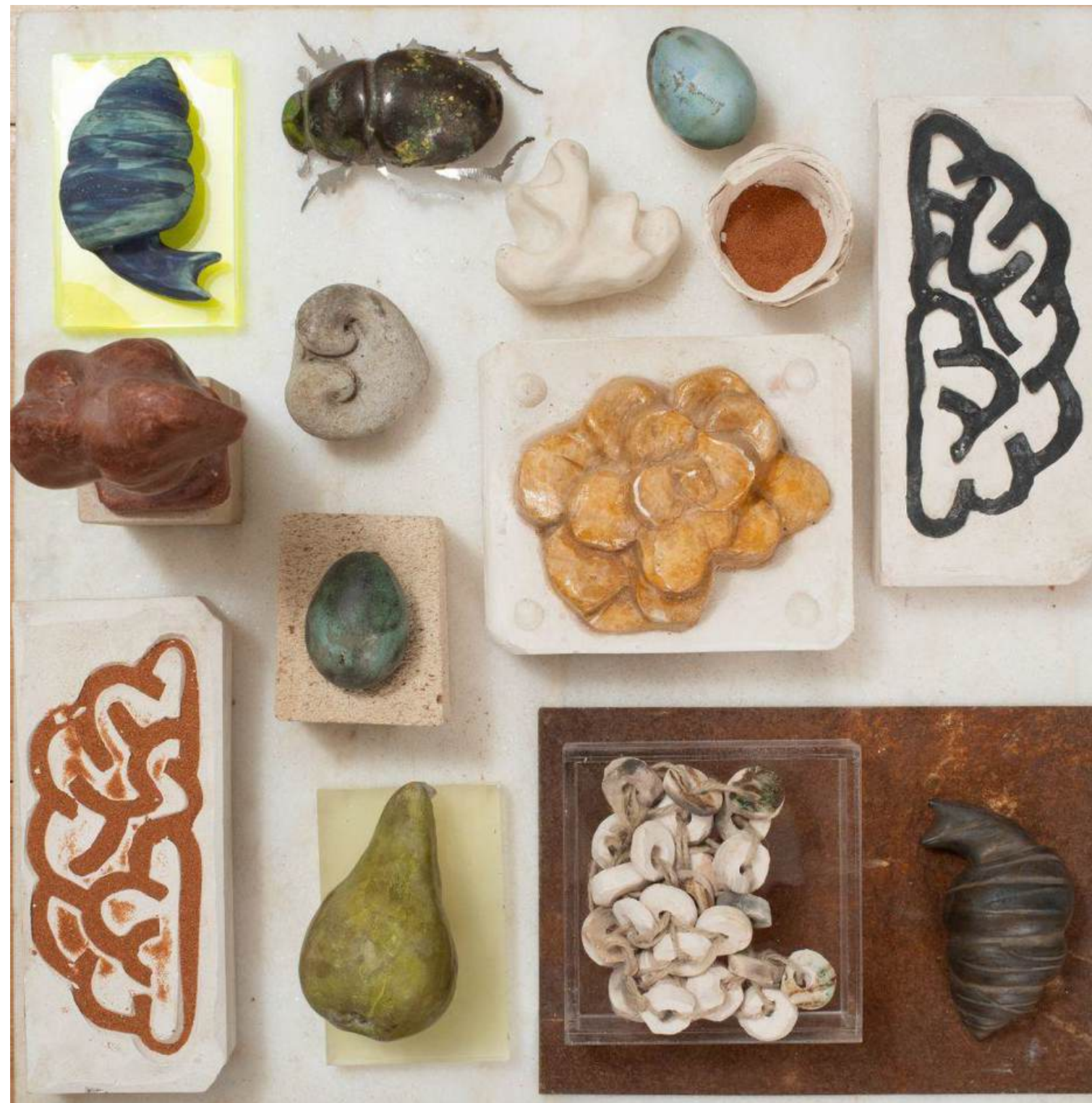
perspex and plaster of paris

45 x 35 x 8cm

**R11 900**







## Marina Walsh

### Assemblage 3

Magritte, mondrian, picasso, walsh

Wood, cement stone ceramic, resin perspex and plaster of paris

45 x 35 x 8cm

**R11 900**





**Marina Walsh**

Triptych

Bronze, base optional

Edition 1/6

Size: 35cm x 30cm x 25cm

**R17 500**

A play on sculptural, composition, movement and dance. The artist referenced a screen grab and plays with the idea of solidifying a moment that was 'snapped' with a mobile phone.





**Marina Walsh**

Memento Mei? (remember me?)

54 x 15 x 54cm

Bronze on wooden base

Edition 1/8 (

**R22 000**





**Marina Walsh**

Proverb head 1

Do not carry all your eggs in one basket

Clay, telephone wire, perspex base

15 x 10 x 6cm

**R4 800**



**Marina Walsh**

Proverb head 2

Every cloud has a silver lining

Clay, telephone wire and perspex base

15 x 10 x 6cm

**R4 800**





**Marina Walsh**

Proverb head 3

The apple does not fall far from the tree

Clay, telephone wire and perspex base

15 x 10 x 6cm

**R4 800**



**Marina Walsh**

Proverb head 4

Luckyfish

Clay, telephone wire and perspex base

15 x 10 x 6cm

**R4 800**





Do not carry all your eggs in one basket  
The artist wishes to encourage parents to buy art pieces for their children as gifts. The proverbs are also meant to be seen through the eye of a child. A child would take the words as literal without understanding the meaning.





**Marina Walsh**

Mirror Mirror

Clay, sandstone base, mesh

85 x 14 x 23cm

**R14 000**



## **Architectural Cityscape Sculptures by Nick Walsh**

These pieces are part of a series of sculptures examining post-modern architecture on the African continent. The three-dimensional aspect allows one to explore the form of the architecture, joining two different locations into one landscape.

The sculptures are slab built stone decorated with underglazes, fired with finishing touches of oil paint.





**Nick Walsh**

Asmara, Eritrea

Slab built stoneware decorated with  
underglazes and oil paint

Size: 13 x 11cm

**R6 000**





## Nick Walsh

Ghana 2

Slab built stoneware decorated  
with underglazes and oil paint

21 x 19cm

**R12 000**





**Nick Walsh**

Ghana 1

Slab built stoneware decorated with  
underglazes and oil paint

18 x 18cm

**R14 000**





**Nick Walsh**

Botanical Vessel 3

Stoneware decorated with underglazes and oil  
paint

31 x 27cm

**R6 000**





**Nick Walsh**

Botanical Vessel 2

Stoneware decorated with underglazes and oil paint

46 x 17cm

**R6 000**





**Nick Walsh**

Botanical Vessel 4

Stoneware decorated with underglazes and oil paint

29 x 30cm

**R6 000**





**Nick Walsh**

Botanical Vessel 1

Stoneware decorated with underglazes  
and oil paint

42 x 17cm

**R8 000**





**Alice Walsh**

Ariadne

This is a solid bronze, exquisitely sculpted original artwork of an imaginary female minotaur, which in greek mythology is called an 'Ariadne'.

Bronze on sandstone base

Edition 2/5 of 12 (4 available)

14 x 7.5 x 10 cm

**R5 750**



# LIZAMORE ON KEYES

For enquiries please email: [teresa@lizamore.co.za](mailto:teresa@lizamore.co.za)

Visit us: [29A Keyes Avenue, Rosebank](#)

Website: [www.lizamore.co.za](http://www.lizamore.co.za)

Instagram: [@lizamoregallery](#)