

UNIVERSITA DEGLI STUDI DI FIRENZE

ISTITUTO PAPIROLOGICO

«G.VITELLI»

## EL SHEIKH 'ABADAH - ANTINOUPOLIS

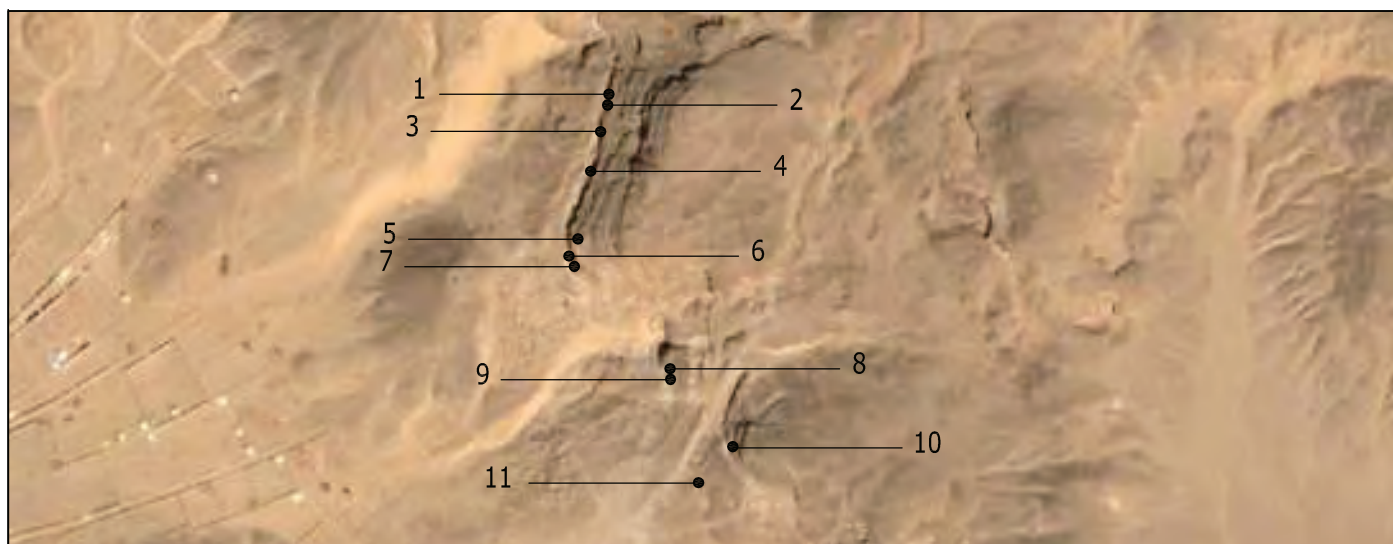
CAMPAGNA DI SCAVI 2005-2006

DIRETTORE: ROSARIO PINTAUDI

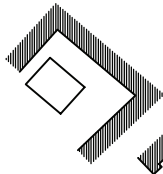
### TOMBE RUPESTRI - PLANIMETRIA D'INSIEME

*ORIENTAMENTO AL NORD GEOGRAFICO SULL'ORIGINALE DEGLI ASSI (MINARETO DI EL SHEIKH 'ABADAH)  
DI COORDINATE CONVENZIONALI E=N=1000 MT. ORIGINE DELLE QUOTE CONVENZIONALE*

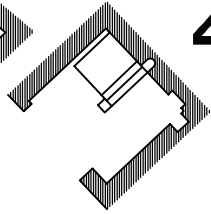
RILIEVO TOPOGRAFICO, DISEGNO E RESTITUZIONE GRAFICA: DOMENICO ZACCARIA



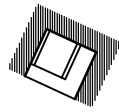
1



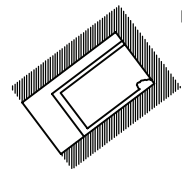
2



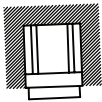
3



4



5



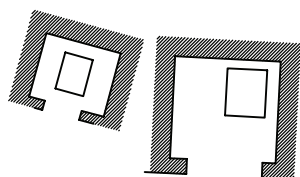
6



7



8 9



10



11



