

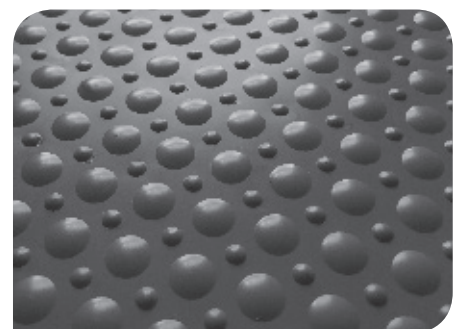
Reflex**TILES** provide the perfect solution for today's fitness and aerobic applications.

Description:

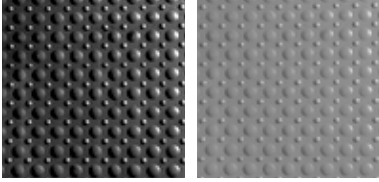
ReflexTILES provide the perfect solution for today's fitness and aerobic applications. These snap together tiles are a breeze to assemble and can be easily removed or expanded. Comfortable and effective in both aerobic, commercial or residential applications. Customize your own equipment mat to almost any size and add a finishing touch with our interlocking beveled edging. Superb anti-fatigue features and simple to clean with mild soap and water. ReflexTILES will keep your facility looking great for years to come.

Applications:

- Tournaments & Demos
- Home Gyms
- Temporary flooring
- Fitness areas
- Trade shows
- Retail displays
- Aerobic studios
- Work stations
- Storage units



Colors:



BLACK

GREY

Personal Notes:

Specifications

Size

12" x 12" x 3/4"

Weight

approx 1.75 lbs per tile

Appearance

Solid top with dimple design upper and suspension system below

Material

Durable PVC material
Waterproof

Accessories:

- Edge & corner pieces
- Black rubber cove base (2" toe)
- Specialty flooring cleaner
- provide even more cushioning with PSF Underlayment