

CPA Enforcement FAQs

2016



PLEASE CALL

(403) 537-7100 OPTION 2

TO REPORT ILLEGALLY
PARKED VEHICLES

HOW TO CONTACT US

If citizens are looking for information on parking matters they should be encouraged to ask the experts.

Sometimes they will contact your offices directly prior to calling us for assistance. This may range from a request for enforcement or to meet with a supervisor to clarify concerns.

The quickest and easiest way for your constituents to reach us is by calling our Customer Solutions Center at 403-537-7100 option 2.

Each call we receive is prioritized, which means that the length of time it takes to dispatch an Officer will vary.

Residents are encouraged to seek out information by visiting our website at www.calgaryparking.com.

p. 2

Cul-de-sac parking

p. 3-4

Crosswalks

p. 4

Abandoned Vehicles

p. 5

Ticket Appeals

p. 6

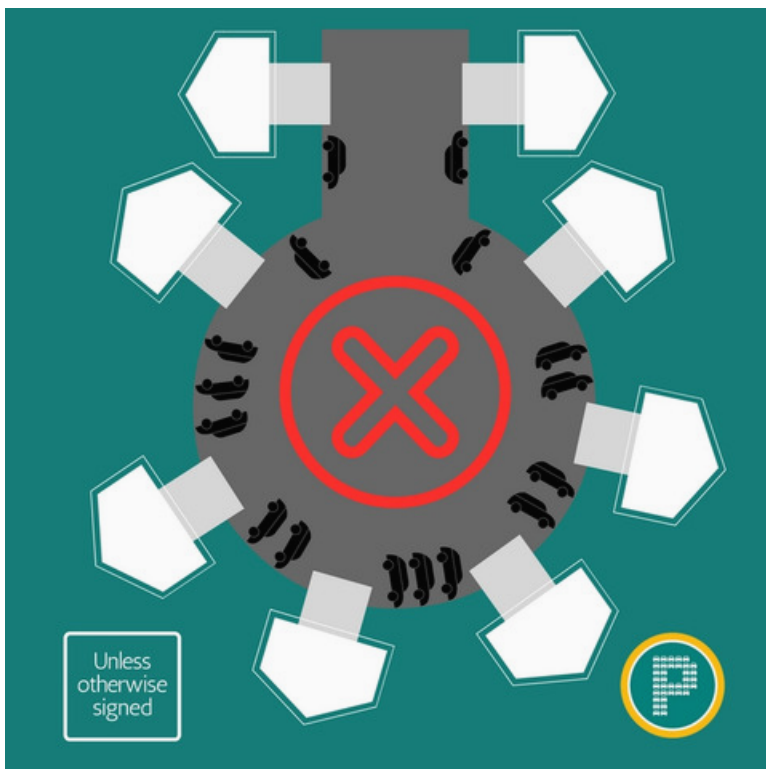
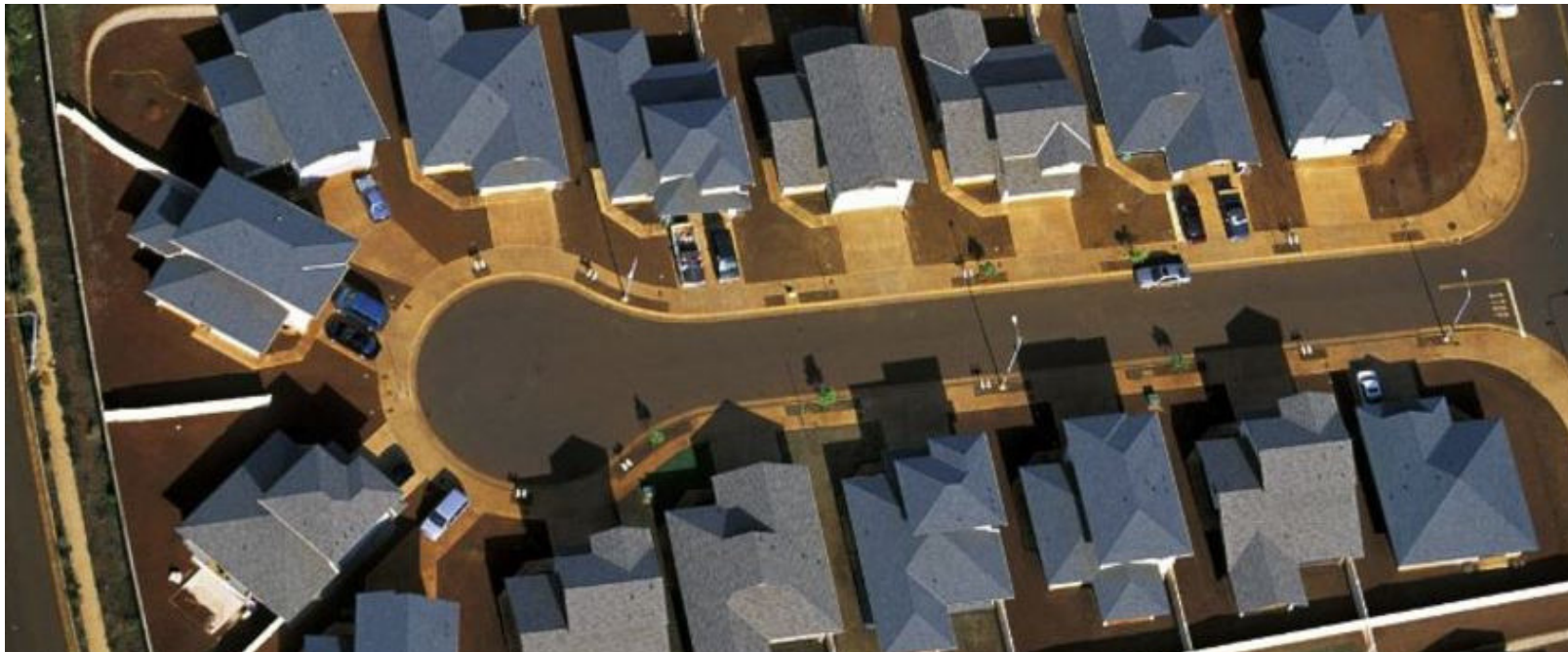
Lifecycle of a Parking Ticket

CUL-DE-SAC PARKING

Angle parking in cul-de-sacs is enforced on a complaint basis only. Not only is parallel parking to the curb a city bylaw, it is also in the provincial Traffic Safety Act.

Although the measurements vary from 15cm to 50cm (or 500mm as the Calgary bylaw states) this parking bylaw may be found in every province across the country.

Currently, the only mechanism in place to allow such parking is to have the area signed for angle parking.



CAN RESIDENTS APPLY FOR ANGLE PARKING?

Residents may inquire about having angle parking permitted in their cul-de-sac by contacting 3-1-1 and requesting the street be reviewed by the Roads business unit to determine if they will allow angle parking.

If the area meets the criteria required by Roads, angle parking signage may be installed.

CROSSWALKS

Crosswalk enforcement depends on the location of the crosswalk as well as the type of crosswalk. There are two charging sections which are applicable to enforcement.

"T" INTERSECTION



MIDBLOCK CROSSWALK

Requires signage and lines



BYLAW NUMBER 41M2002

1. This Bylaw may be cited as the "Calgary Parking Bylaw".

3. (1) Unless required or permitted by the Act or by the Traffic Control Device, or in compliance with the directions of a Peace Officer, or to avoid conflict with other traffic, a driver of a vehicle shall not stop or park that vehicle:

(b) on a Crosswalk or on any part of a Crosswalk;

(h) within 5 metres of the near side or of a marked Crosswalk.

"Cross Walk" means:

(i) that part of a roadway at an intersection included within the connection of the lateral line of the sidewalks on the opposite sides of the highway measured from the curbs or, in the absence of curbs, from the edges of the roadway; or

(ii) any part of a roadway at an intersection or elsewhere distinctly indicated for pedestrian crossing by lines or by other markings on the road surface

UNMARKED CROSSWALKS

If there is an intersection where accessible ramps are being blocked by parked vehicles and there are no signs and lines defining the crosswalk, please request Roads to clearly mark the crosswalk through 3-1-1.



ABANDONED VEHICLES

Concerns regarding abandoned vehicles are responded to by complaint calls only. In order to determine that the vehicle may be abandoned, a CPA enforcement officer chalks the tires and issues a 72 hour Vehicle Seizure Notice sticker. CPA then makes attempts to contact the registered owner in person or by phone to seek compliance.

There is no exemption in the bylaw pertaining to the location of the vehicle. City streets are not intended for the long term storage of vehicles.

ABANDONED VEHICLES

8. (1) Except as otherwise permitted under the Act or a bylaw, a person shall not:

- (a) abandon a vehicle on a highway; or
- (b) abandon a vehicle on public or private property without the consent of the owner or person in possession or control of the property.

(2) A vehicle that is:

- (a) left standing on a highway for more than 72 consecutive hours, unless otherwise provided for in a bylaw; or
- (b) left standing on public or private property for more than 72 consecutive hours without the consent of the owner or person in possession or control of the property;

is deemed to have been abandoned at that location.

"Highway" means any thoroughfare, street, road, trail, avenue, parkway, driveway, viaduct, lane, alley, square, bridge, causeway, trestleway or other place, whether publicly or privately owned, any part of which the public is ordinarily entitled or permitted to use for the passage or parking of vehicles

ADMINISTRATIVE REVIEWS A.K.A TICKET APPEALS

"CPA is unable
to cancel
tickets based
on
compassionate
or mitigating
circumstances"

Administrative reviews may be filed online from our website www.calgaryparking.com, or in person at our main office located at 620 9th Avenue SW.

Ticket appeals submitted to CPA are reviewed internally for technical errors and obvious cases of 'not guilty'.

If a resident would like to appeal their ticket based on compassionate or mitigating circumstances, they must go to the First Appearance Centre located at the Court and speak to a representative from prosecution.

Should an individual want to challenge the ticket in front of a traffic commissioner or judge they must attend Traffic Court.



People filing online now have the ability to view the pictures the Officer took at the time of the infraction.

JUST A REMINDER:

Elected officials and their support staff are eligible for a Park as Required permit. This permit is only valid on-street.

Please refer to the Park as Required Permit Conditions for details.

All CPA surface lots and parkades are free for the Mayor and Councillors use only.

LIFECYCLE

of a parking ticket

