

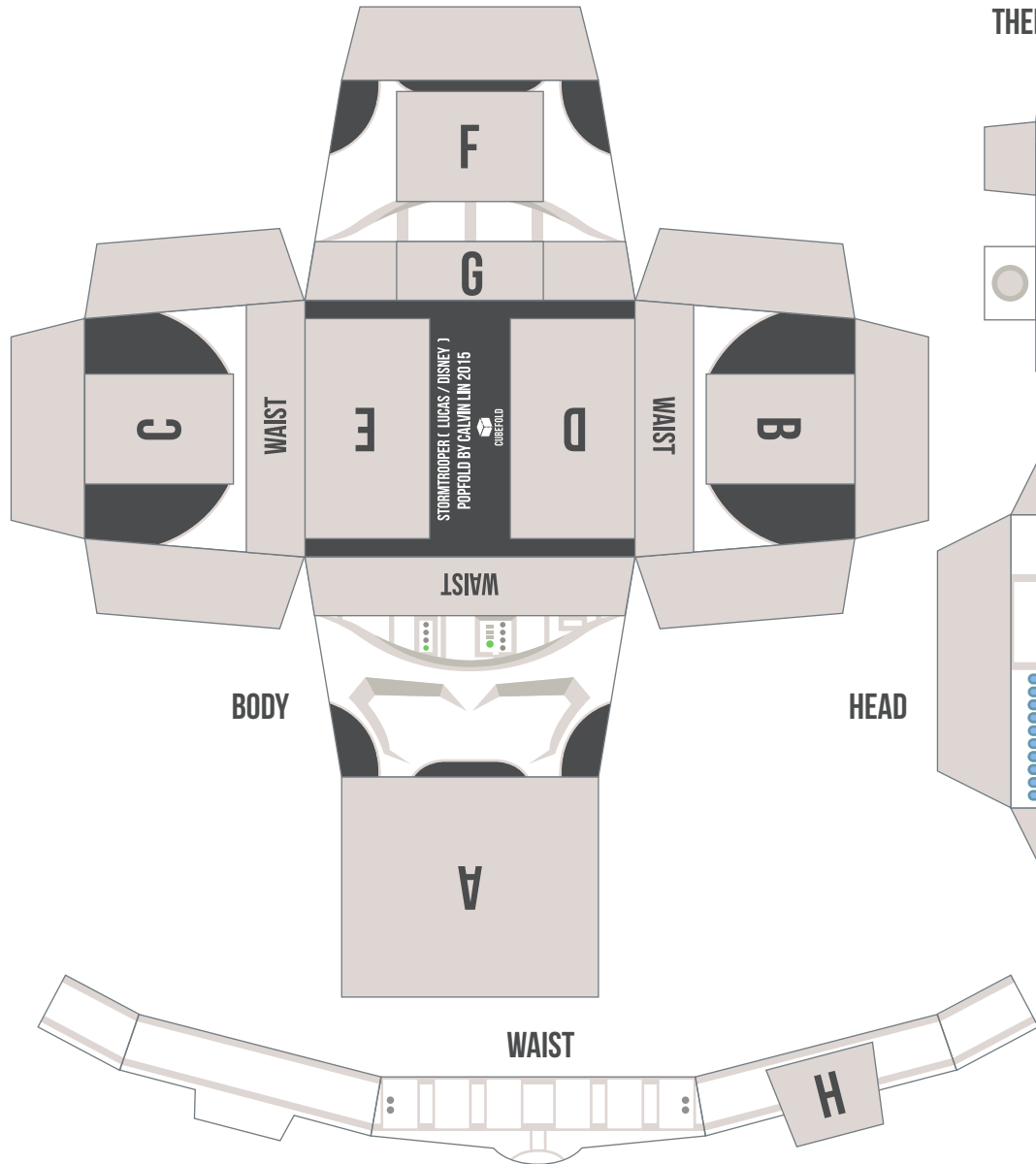


**CUBEFOLD**

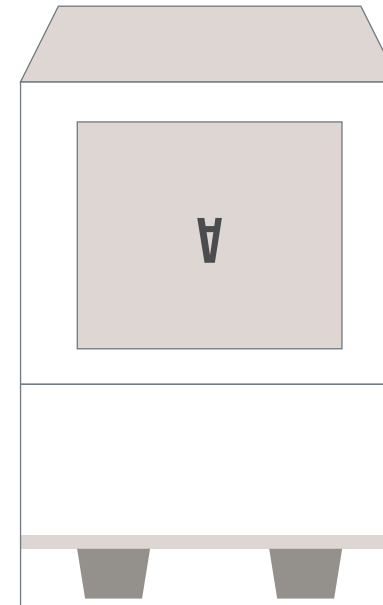
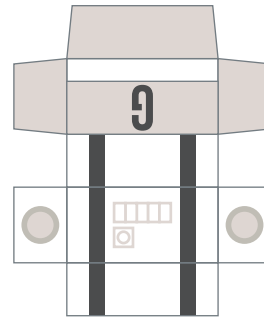
**#002 STORMTROOPER  
POPFOLD - STAR WARS SERIES**

**PRINTING INSTRUCTIONS**

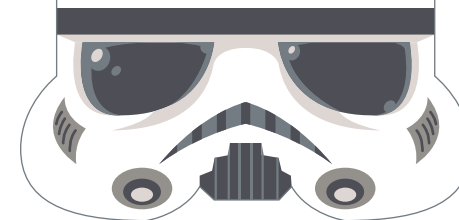
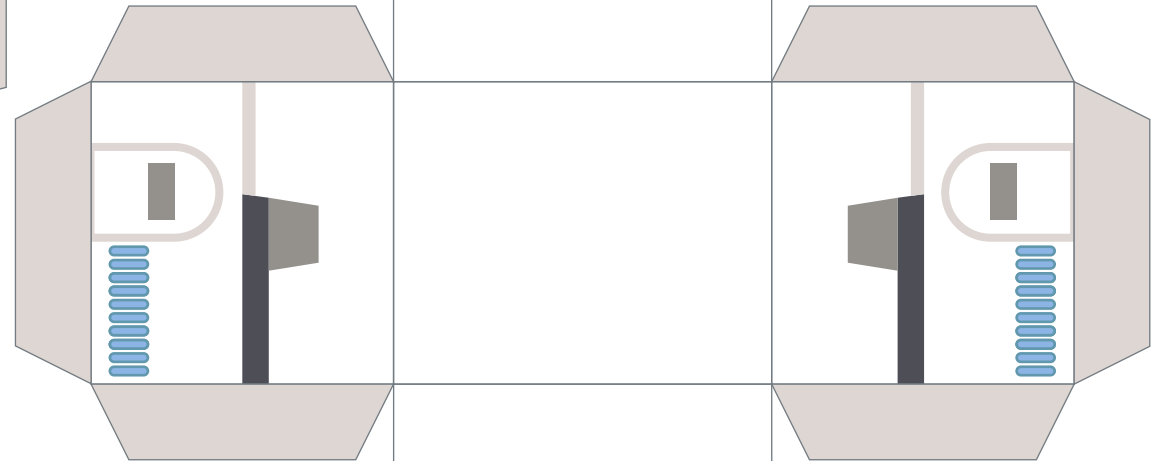
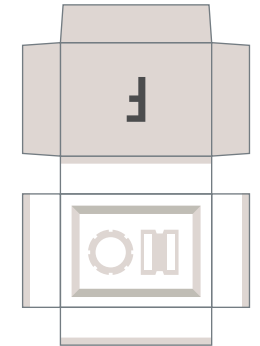
- A) Recommended Paper A4, 120 - 160 gsm, Matte White
- B) Set Print Quality Setting to "High"
- C) (Optional) if colour is not matched to screen try set paper type option on your print setting to "Photo Paper". etc



**THERMAL DETONATOR**



**BACK**





**CUBEFOLD**

**#002 STORMTROOPER**

**POPFOLD - STAR WARS SERIES**

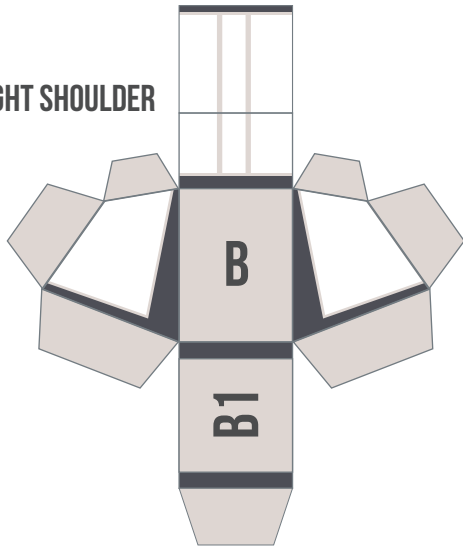
**TOOLS**

- A) Colour Printer (inkjet recommended)
- B) Double-Sided adhesive tape
- C) Sharp scissors / cutting knife & metal ruler
- D) (Optional) Scorer or dried ball-point pen for scoring

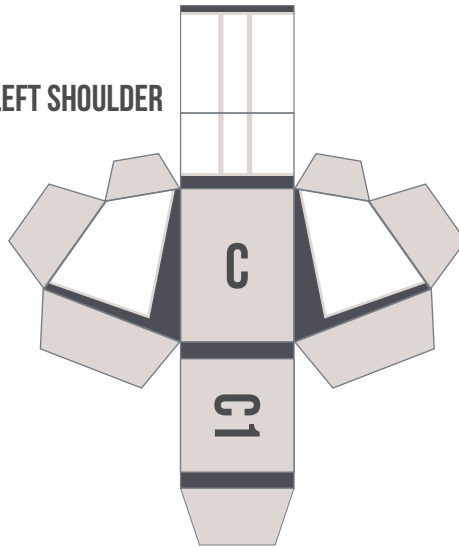
**CRAFTING INSTRUCTIONS**

- A) Cut out all parts carefully
- B) Score and/or fold neatly along all straight lines
- C) Stick all facings on top of flaps carefully
- D) Stick all parts carefully with corresponding letters

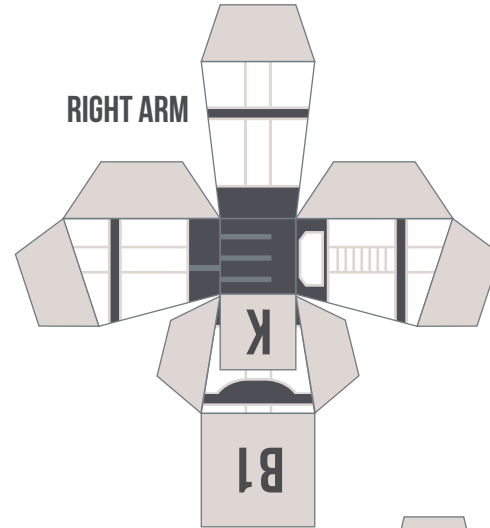
**RIGHT SHOULDER**



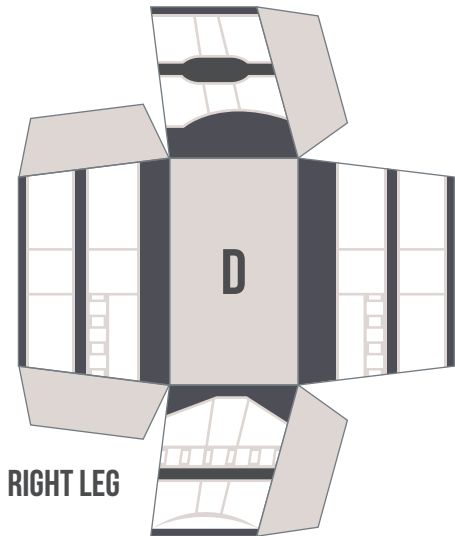
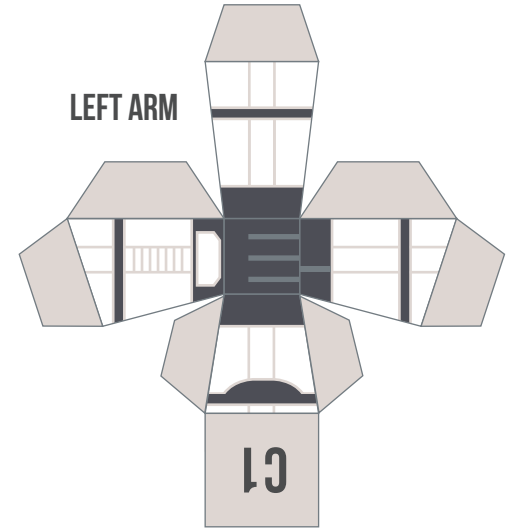
**LEFT SHOULDER**



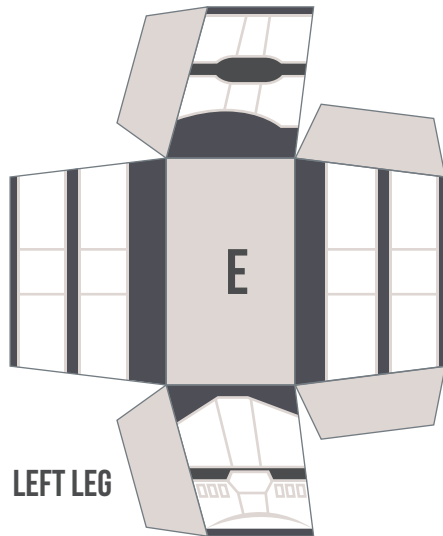
**RIGHT ARM**



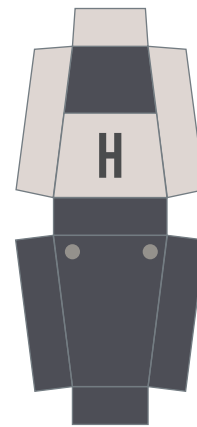
**LEFT ARM**



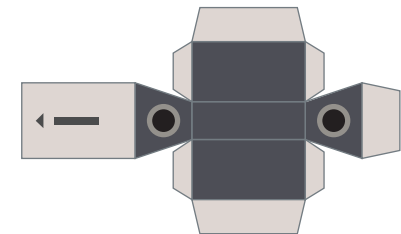
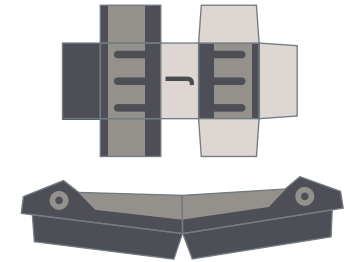
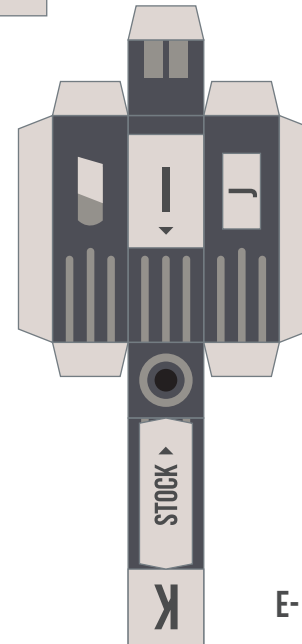
**RIGHT LEG**



**LEFT LEG**



**HOLSTER**



**E-11 BLASTER**

