

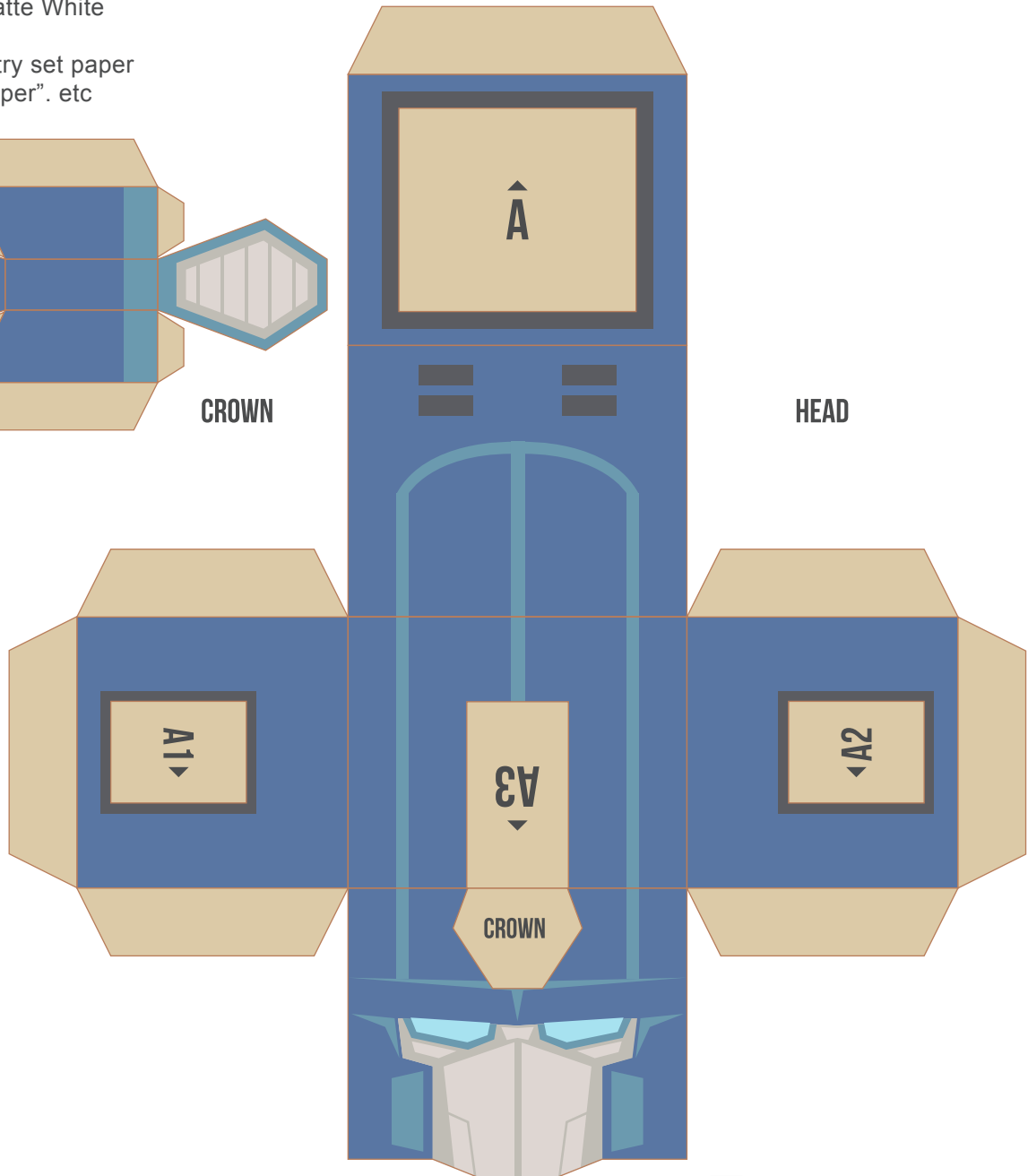
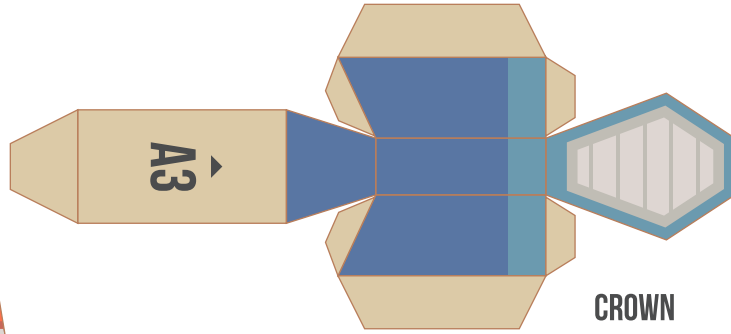
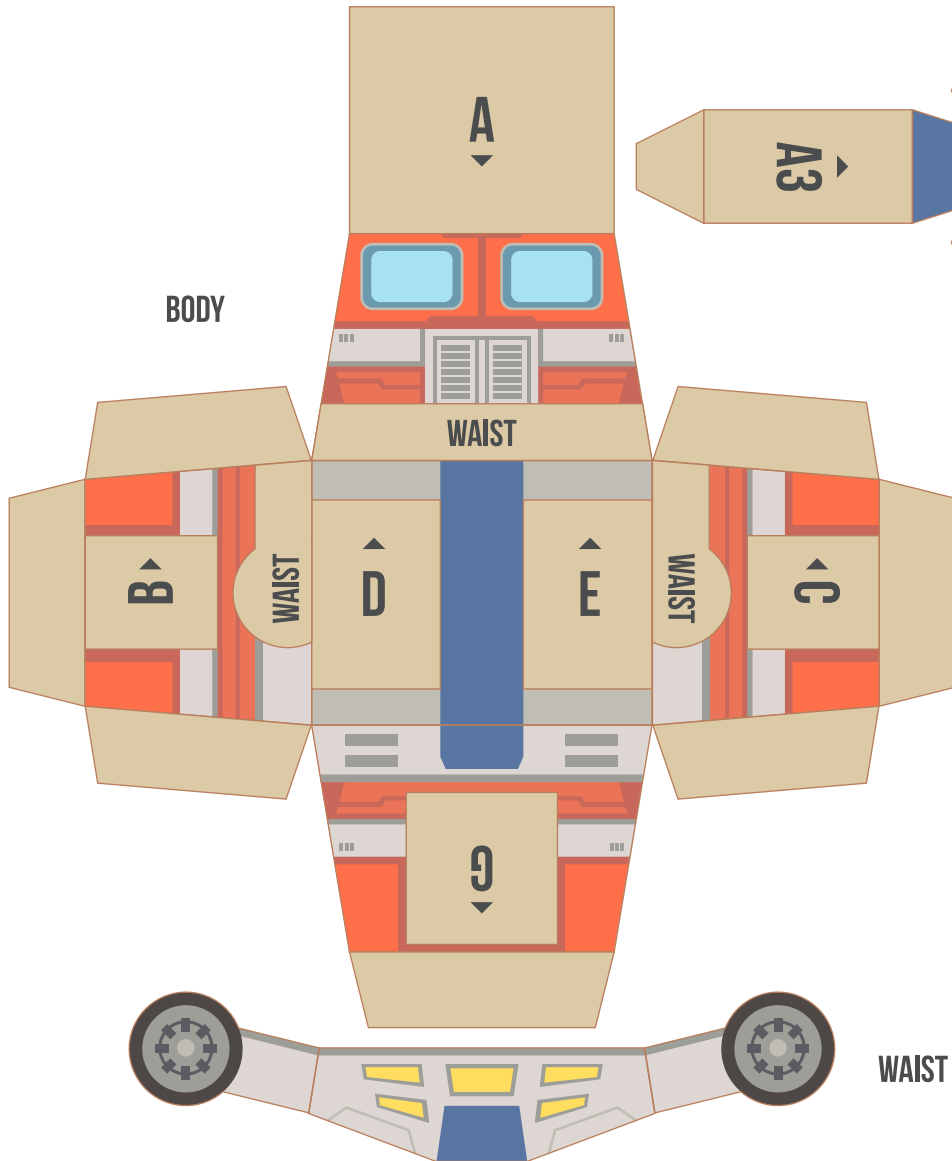


CUBEFOLD

**#002 OPTIMUS PRIME
POPFOLD - MECH SERIES**

PRINTING INSTRUCTIONS

- A) Recommended Paper A4, 120 - 160 gsm, Matte White
- B) Set Print Quality Setting to "High"
- C) (Optional) if colour is not matched to screen try set paper type option on your print setting to "Photo Paper". etc





CUBEFOLD

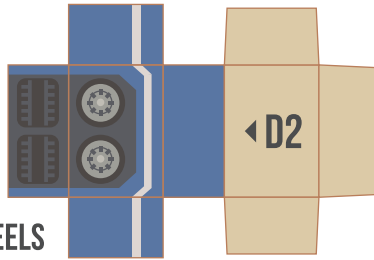
#002 OPTIMUS PRIME
POPFOLD - MECH SERIES

TOOLS

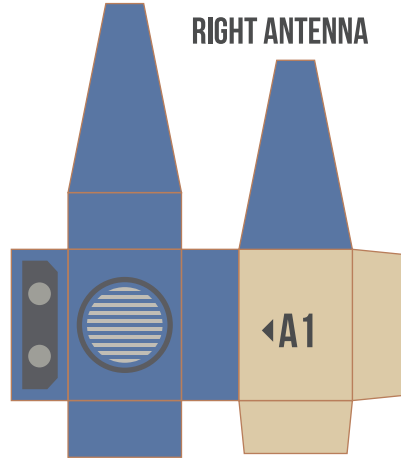
- A) Colour Printer (inkjet recommended)
- B) Double-Sided adhesive tape
- C) Sharp scissors / cutting knife & metal ruler
- D) (Optional) Scorer or dried ball-point pen for scoring

CRAFTING INSTRUCTIONS

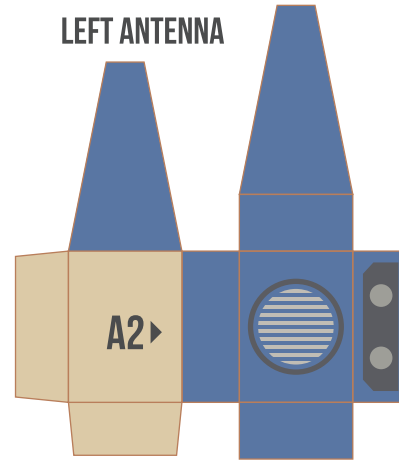
- A) Cut out all parts carefully
- B) Score and/or fold neatly along all straight lines
- C) Stick all facings on top of flaps carefully
- D) Stick all parts carefully with corresponding letters



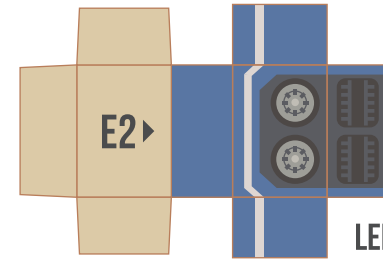
RIGHT WHEELS



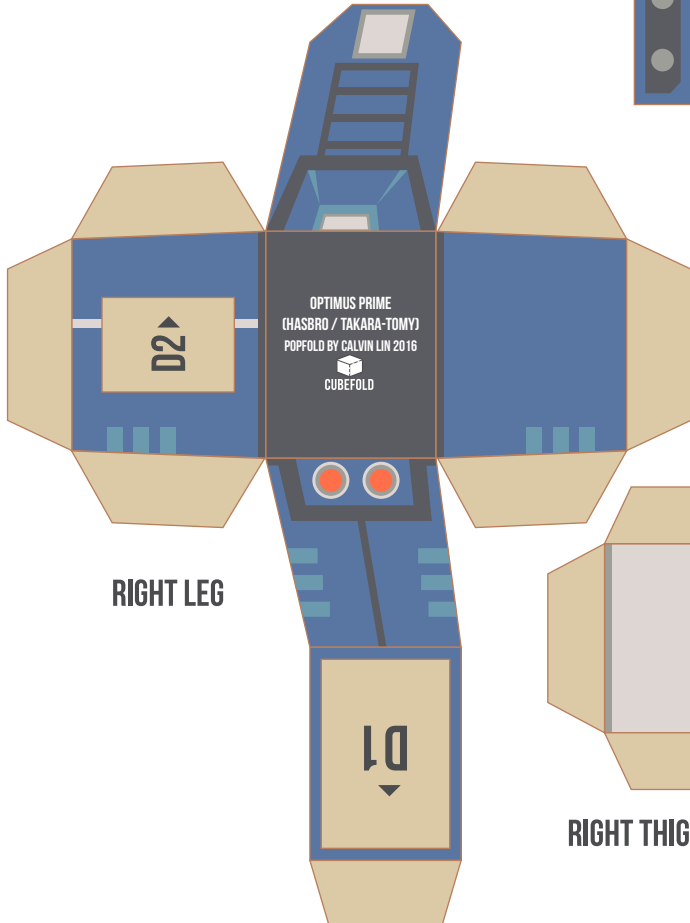
RIGHT ANTENNA



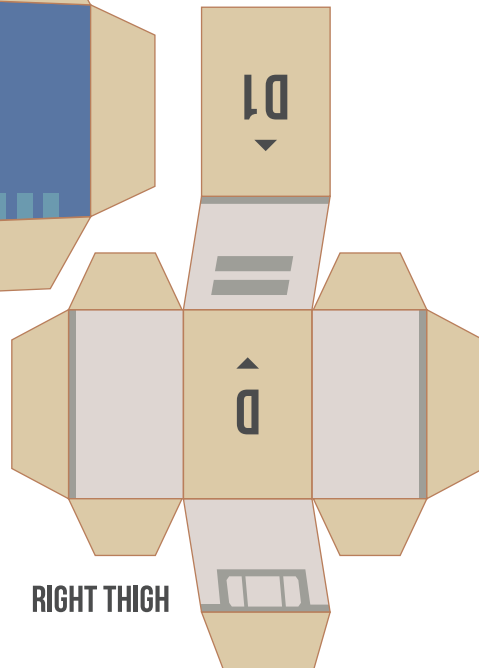
LEFT ANTENNA



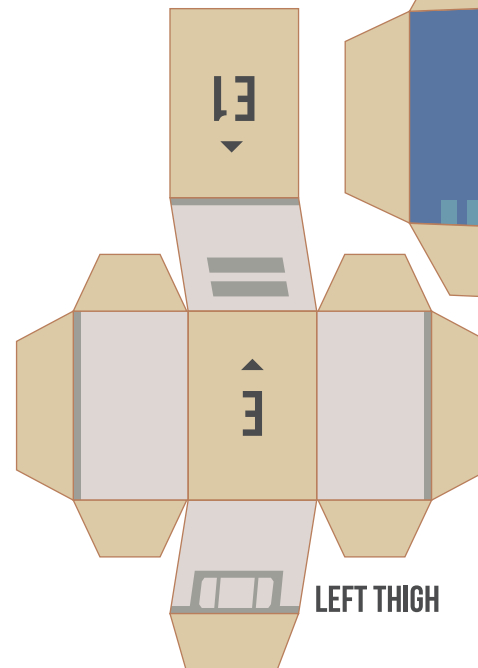
LEFT WHEELS



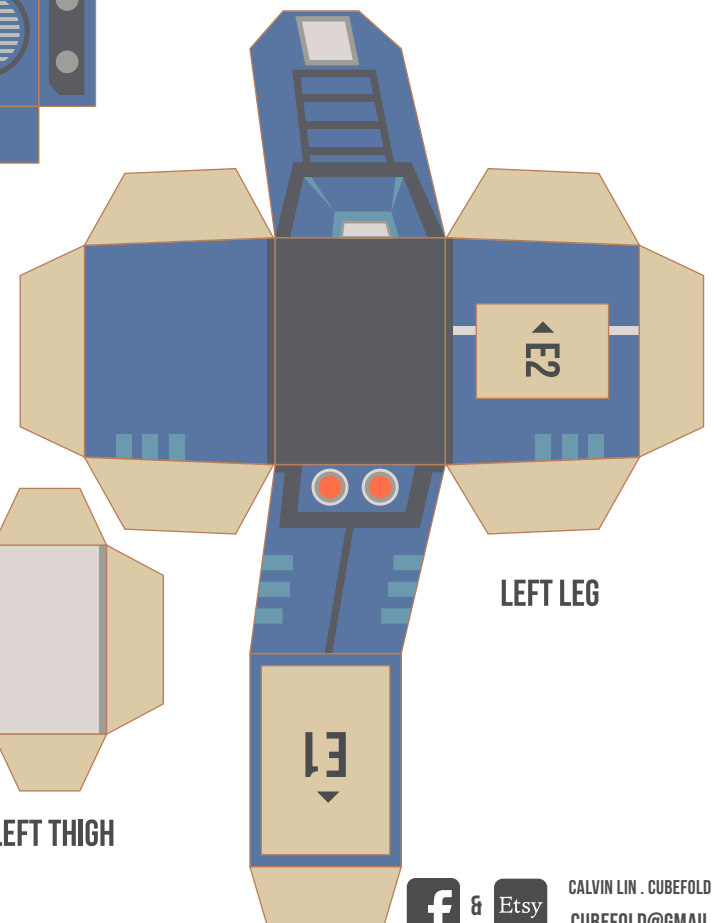
RIGHT LEG



RIGHT THIGH



LEFT THIGH



LEFT LEG



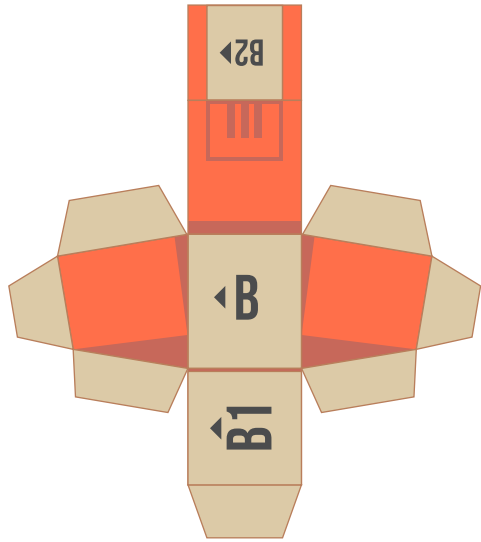


CUBEFOLD

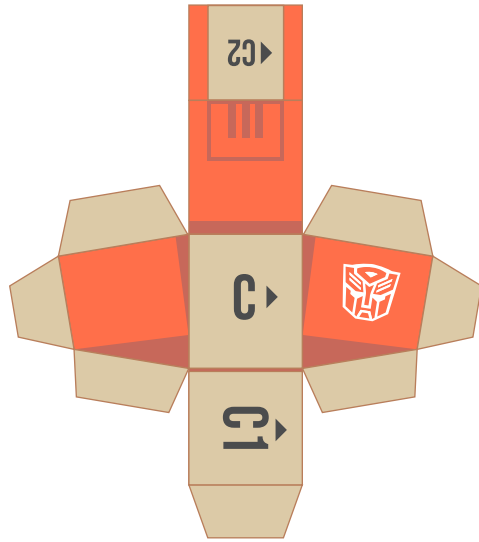
**#002 OPTIMUS PRIME
POPFOLD - MECH SERIES**

PLEASE READ DEAR FRIEND !

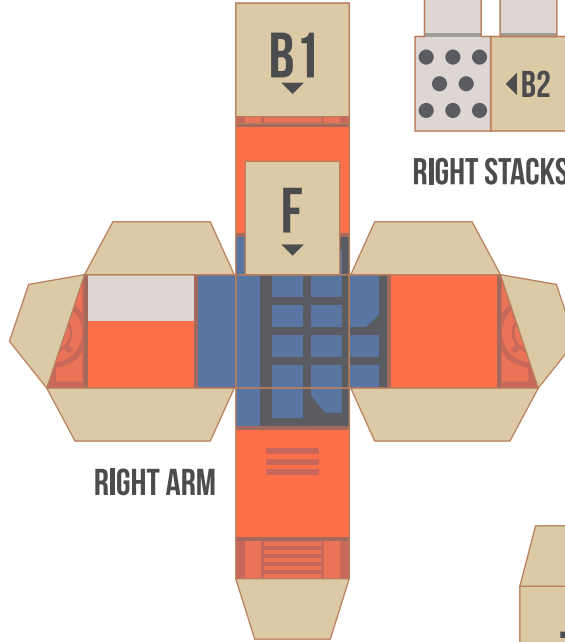
Popfold projects are not for sale or commercial purposes - They are only for home and personal print. However do feel free to craft and share the product to your friends or loved ones. If they are interested in working on the kit personally, please direct them to the CUBEFOLD website for all Popfold range freely available for download. We hope you enjoy our designer paper toys and hope you have a wonderful time crafting them!



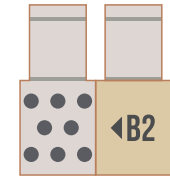
RIGHT SHOULDER



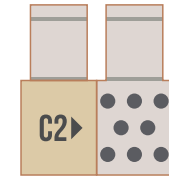
LEFT SHOULDER



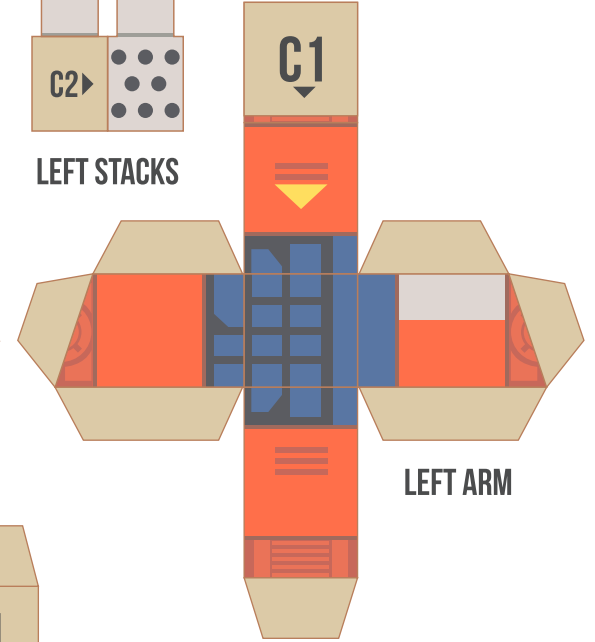
RIGHT ARM



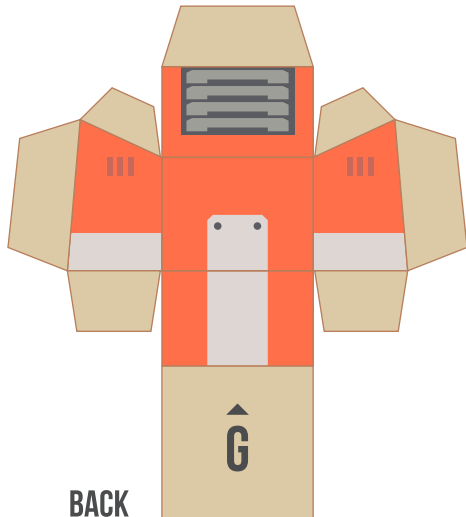
RIGHT STACKS



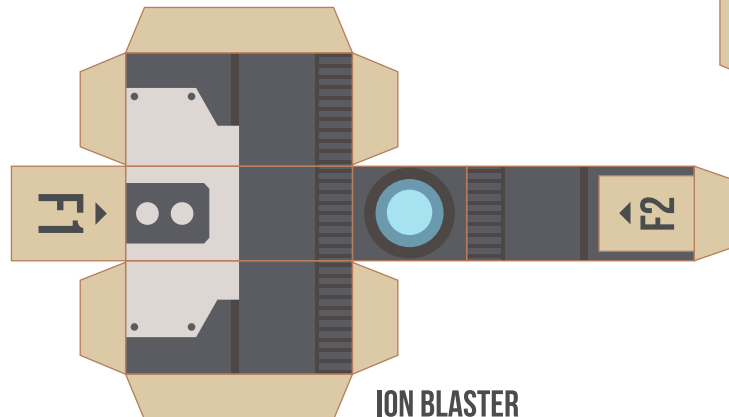
LEFT STACKS



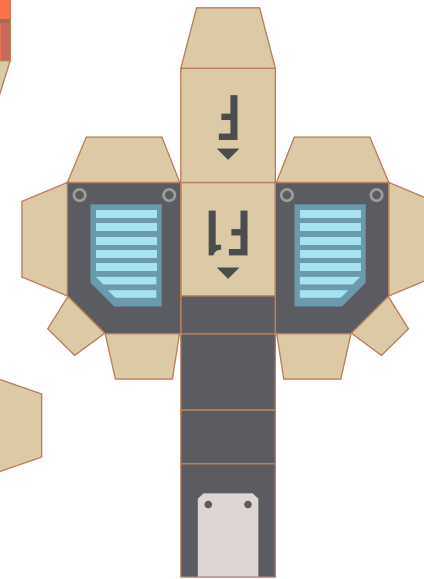
LEFT ARM



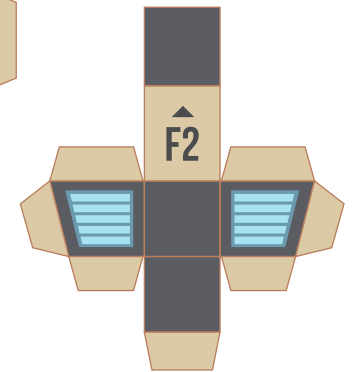
BACK



ION BLASTER



ION BLASTER (1)



ION BLASTER (2)

