

# BEBC Congregational Missions Forum Series

## Session Two

This survey of the development of missions is undertaken at 36,000 feet, and so it is by necessity painted in very broad brush strokes.

### Edict of Milan (313 AD)

- Christianity declared to be the official state religion of the Roman Empire
  - significant program of Roman Catholic Church (RCC) missions by 1500 AD
    - religious orders
    - RCC ecclesiology
    - papal authority
  - "in the RCC" = "in Christ"

### The Reformation

- Reformation, not repudiation
  - prioritized soteriology
  - retained infant baptism
  - did not emphasize missions in their systematic theologies

### The Anabaptists

- Anabaptists repudiation of infant baptism
  - persecution and dispersion
  - evangelism and missions

### Protestant Missions

- William Carey
  - village ministry
    - lacked financial capital
    - lacked economic mobility
    - lacked political and ecclesiastical clout
  - missionary society
  - colonial trade companies
- Hudson Taylor
  - China *Inland* Mission
  - African *Inland* Mission
  - Soudan *Interior* Mission

## **WWII**

- Surge of missionary activity
  - specialized training
    - radio
    - aviation
    - linguistics
  - Specialized logistical requirements
  - mission agencies
    - deputation and furlough
      - support model
      - coordination by agency

## **Short Term Missions (STM)**

- great interest and passion
- model
  - biblical mandate
  - philosophy
  - policy
  - ministry plan
  - oversight
  - accountability
  - evaluation
- colleges and parachurch organizations
- tangential local churches involvement

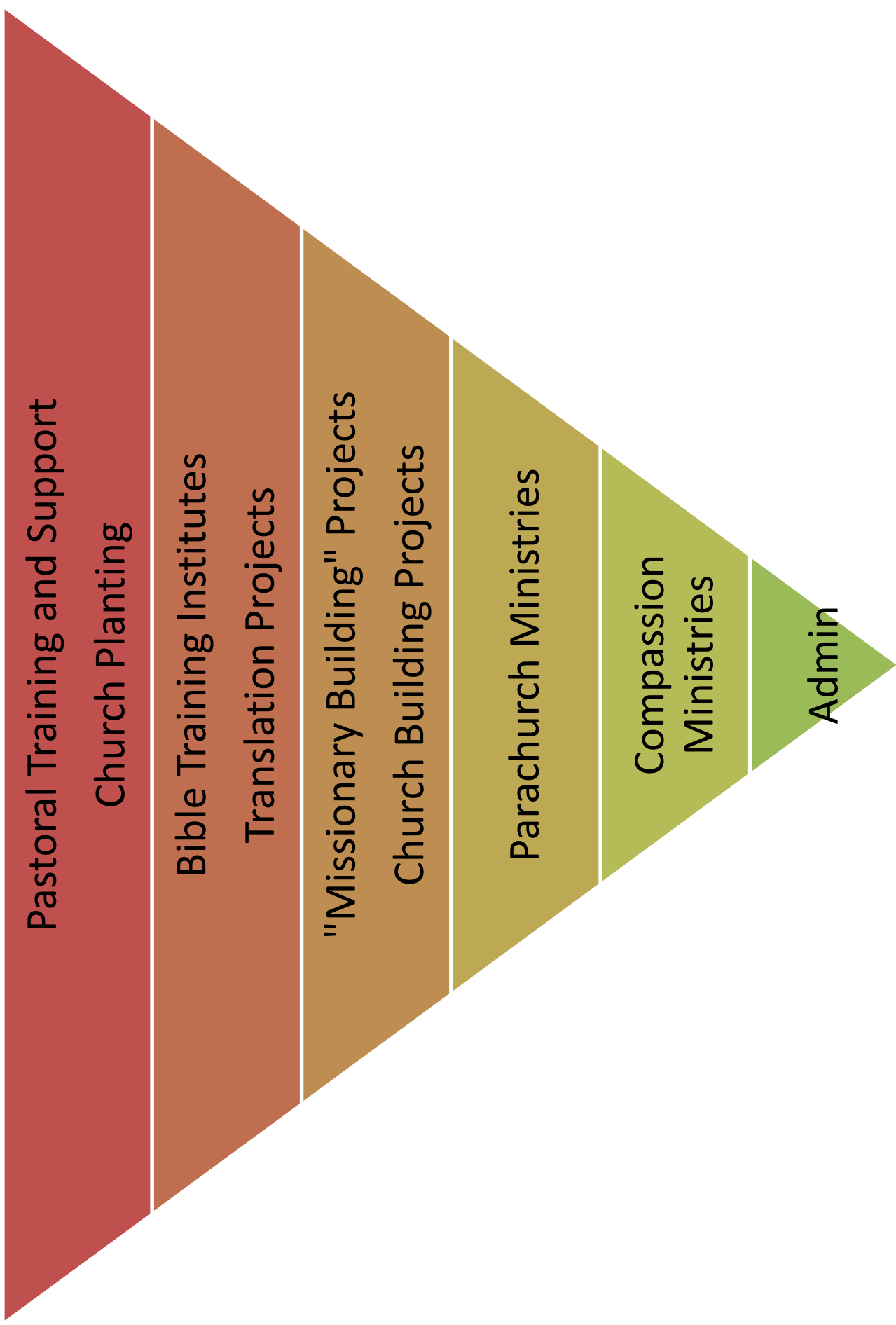
## **Agency Response**

- embracing the role
- addressing the problem
  - strengthening the agency rather than strengthening the churches

## **Dangers Facing Modern Missions**

- Church Growth Movements
- Social Justice
- Bible Translation
- Global Theologizing
- False Gospels and Aberrant Theologies

## Faith Promise Budget Distribution



## Missionary Team Roles

Cast	Call	Capacity	Commission	Collaboration	Concerns
<b>Sending Church</b>	<p><i>Matt 28:19-20; Acts 1:8</i></p> <ul style="list-style-type: none"> <li>The recipient of the Great Commission</li> <li>The "pillar and ground of the truth" (1 Tim. 3:15)</li> <li>The authority (Acts 15-21)</li> <li><b><u>How can we best support the missionary and guide the agency?</u></b></li> </ul>	<p><i>Acts 11:22-26; 13:1-3</i></p> <ul style="list-style-type: none"> <li><b>Challenge</b></li> <li><b>Teach</b></li> <li><b>Identify</b></li> <li><b>Mentor</b></li> </ul>	<p><i>Acts 13:2-3; 15:40; 18:27</i></p> <ul style="list-style-type: none"> <li><b>Observe</b></li> <li><b>Confirm</b></li> <li><b>Commit</b></li> <li><b>Collaborate</b></li> </ul>	<p><i>Acts 13:4-21:26</i></p> <ul style="list-style-type: none"> <li>Play for Finance</li> <li>Shepherd</li> <li>Represent</li> <li>Collaborate with</li> <li>Anticipate needs</li> <li>Respond to needs</li> <li>Visit</li> </ul>	<ul style="list-style-type: none"> <li>Relinquishing, not Relishing role</li> <li>Passive, not Proactive</li> <li>Incidental, not Integral to the calling, sending, and supporting process</li> <li>Ignorant, not Informed</li> </ul>
<b>Missionary</b>	<p><i>Acts 13-21; Rom 10:15</i></p> <ul style="list-style-type: none"> <li>One of the ministers of the Great Commission</li> <li>An Extension of the church</li> <li><b><u>How can I best represent my church and utilize my agency?</u></b></li> </ul>	<p><i>Acts 11:22-26; 13:1-2a</i></p> <ul style="list-style-type: none"> <li><b>Respond</b></li> <li><b>Learn</b></li> <li><b>Minister</b></li> <li><b>Prepare</b></li> </ul>	<p><i>Acts 13:3; 15:40; 18:27</i></p> <ul style="list-style-type: none"> <li><b>Confirm</b></li> <li><b>Commit</b></li> <li><b>Observe</b></li> <li><b>Collaborate</b></li> </ul>	<p><i>Acts 13:4-21:26</i></p> <p>On the field</p> <ul style="list-style-type: none"> <li>Live the gospel</li> <li>Preach the gospel</li> <li>Make disciples</li> <li>Train pastors</li> <li>Plant churches</li> </ul> <p>At the sending church</p> <ul style="list-style-type: none"> <li>Refresh</li> <li>Retool</li> <li>Refocus</li> <li>Engage</li> <li>Edify</li> <li>Enrich</li> </ul>	<ul style="list-style-type: none"> <li>Complacent, not Challenging</li> <li>Independent from, not Integrated with the sending church</li> <li>Pragmatic, not Philosophical</li> </ul>
<b>Mission Agency</b>	<ul style="list-style-type: none"> <li>One of the aids to the recipient and ministers of the Great Commission</li> <li>A help</li> <li><b><u>How can we best assist the church and serve the missionary?</u></b></li> </ul>	<ul style="list-style-type: none"> <li><b>Educate</b></li> <li><b>Recruit</b></li> </ul>	<ul style="list-style-type: none"> <li><b>Coordinate</b></li> <li><b>Assign</b></li> <li><b>Team-build</b></li> </ul>	<p><i>In loco ecclesiae</i></p> <ul style="list-style-type: none"> <li>Facilitate and Administrate</li> <li>finances</li> <li>compliance</li> <li>training</li> <li>preparation</li> </ul> <ul style="list-style-type: none"> <li>Assist churches</li> <li>communication</li> <li>collaboration</li> </ul>	<ul style="list-style-type: none"> <li>Assuming responsibilities, not Assisting in them</li> <li>Pragmatic, not Principled</li> <li>Tight-lipped, not Transparent</li> </ul>