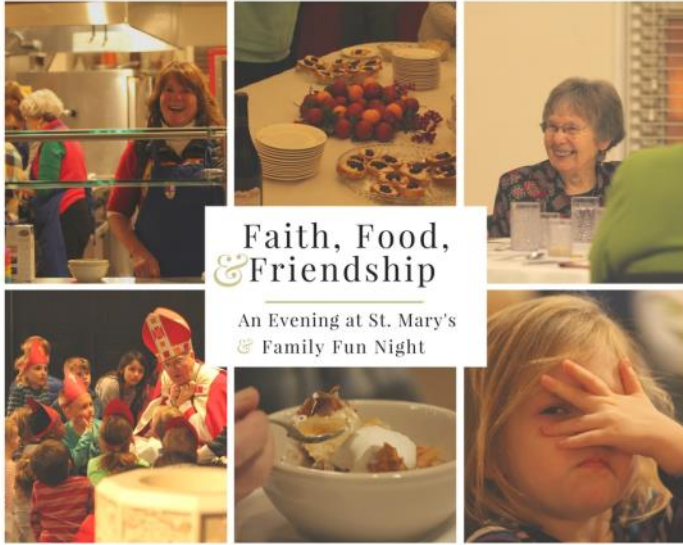




# THE BELLRINGER

St. Mary's Episcopal Church  
Eugene, Oregon  
www.saint-marys.org

February 2017  
Volume 19, Issue 2



## A Saint Valentine's Celebration Tuesday, February 7<sup>th</sup>

- 5:30 PM - Social Time in the Guild Room  
*(separate kids' activities)*
- 6:00 PM - We bring everyone together for a short program in the church
- 6:15 PM - Delicious dinner in the Parish Hall

Join us for an evening of entertainment, social time, great food, children's activities, and lively conversation.

If you haven't been to An Evening at St. Mary's & Family Fun Night since we changed our format, we highly recommend you check it out. Sign up at the church or by calling the office.

## Shrove Tuesday Pancake Supper

Tuesday, February 28<sup>th</sup>  
5:30-7:00 PM

Along with a pancake dinner, prepared by the Men's Club, there will be fun activities for children of all ages.

We hope to see you and your family there!

Sign up at the table outside the Guild Room or contact the office and ask us to sign you up!



## Lighting the Fires!



We will burn last year's palms into ashes before the Shrove Tuesday Pancake Supper, at 5:15 PM, in the courtyard. You are invited to bring all your palms and palm crosses from last year to be burnt. The ashes will be used in our Ash Wednesday services. This is an exciting activity for our younger parishioners, and for anyone who has wondered where the ashes come from.



**How We Live**  
**Sharon L. Rodgers, Liturgist**

O God, the fountain of wisdom,... Prayer for Congress or a State  
Legislature, p. 82I, BCP

Years ago I read in a book whose title escapes me, “Just because you experienced it, doesn’t mean it really happened.” I recall using the line as a way to enter a discussion at a staff meeting years later, at a time when staff relations were tenuous at best, after someone described an event to our new principal quite differently from how I remembered it. Given the response to my opening line, it appeared many others had memories of the event greatly different from what the first speaker had described as well. Remembering that the author had used that statement as one of the reasons community is so important to us, because those around us allow us to check our perceptions if we’re willing to do so, made it seem like an effective way for me to offer my memory of events without being wildly confrontational.

While we all want to believe we’re astute observers of both events and human behavior, we know from countless examples of witness testimony after shootings, accidents, or other traumatic events, that people frequently remember what they experienced quite inaccurately. Even when we remove stress from the equation, the reality is we each view life through a window unused by anyone else. That is, no one else has lived our lives, experienced what we’ve experienced, so therefore no one has had their attitudes and understandings shaped in exactly the same way ours have been. Everything we’ve experienced in the past shapes our understanding and responses to what happens in our lives today, and that is true for everyone around us.

Given the polarized world in which we live, this is extremely important to remember. While there are of course endless day to day decisions we need to make quickly, when it comes to significant matters we would do well to slow down, take time to reflect, to listen to a variety of external voices as well as the still small voice inside. God, after all, is the fountain of all wisdom. Perhaps God is speaking to us through a voice to which we’ve never paid much attention in the past. Perhaps if we give God time to guide our power of reason to find the answer to what may have initially appeared to be a difficult problem, the answer will prove to be surprisingly obvious. “Sleep on it,” is not empty advice. We may well find the answer we’ve been seeking waiting for us when we awaken. Maybe we’ll remember the dream in which God gave us direction, maybe we’ll simply wake up knowing what the answer is. Either way, the fountain of wisdom will have quenched our thirsty soul.

**Holiday Office Hours**

The church office will be **closed** Monday, February 20th in observance of  
Presidents’ Day

March *Bellringer* Deadline:  
**February 15th**



**ST. MARY'S**  
Episcopal Church

1300 Pearl Street Eugene, Oregon 97401  
Church Office 541-343-9253

Web Page: [www.saint-marys.org](http://www.saint-marys.org)  
“Like” us on Facebook: [www.facebook.com/st.marys.eugene](http://www.facebook.com/st.marys.eugene)

**OFFICE HOURS**

9 AM to 5 PM, Monday - Friday

**CLERGY**

The Rev. Bingham Powell, *Rector*  
The Rev. Brad Toebben, *Assistant Priest*  
The Rev. Christine Marie, *Priest Associate*  
The Rev. Nancy Crawford, *Deacon*  
The Rev. Tom English, *Deacon*  
The Rev. Nancy Muhlheim, *Deacon*  
The Rev. Ann Rose, *Deacon*  
The Rev. Theodore Berktoold, *Rector Emeritus*

**MUSIC**

Maria Dossin, *Music Director, Organist*  
Tom Trent, *Liturgical Choir Director*  
Paula Ward, *Children & Youth Music Director*  
Loren and Tom Mohler, *Circle Service Musicians*  
Christine Zeller-Powell, *Spanish Service Pianist*  
Carolyn Bergquist, *Assistant Organist*  
Harold Owen, *Liturgical Choir Director Emeritus*

**OFFICE**

Louise Fortuna, *Office and Building Manager and  
Bellringer Editor*  
Email: [louise@saint-marys.org](mailto:louise@saint-marys.org)  
Lana Johnson, *Finance and Records Manager*  
Email: [lane@saint-marys.org](mailto:lane@saint-marys.org)  
Judy Alison, *Program Support Team Assistant*  
Email: [judy@saint-marys.org](mailto:judy@saint-marys.org)

**CHILDREN, YOUTH, AND  
YOUNG ADULTS**

Glenda Jeter, *Nursery Coordinator & Care Giver*  
Taylor Cabrera, *Nursery Care Giver*  
Sue Ann Hinman, *Sunday School Director*  
The Rev. Doug Hale, *Campus Chaplain*

**VESTRY**

Dorothy Attneave, *Senior Warden*  
Jesse Williams, *Junior Warden*  
Eric DeFreest  
Dena Putnam Gilchrist  
Mike Ignatius  
Hillary Kittleson  
Lisa Kovacevic  
Brian McMurray  
Nicole Smithweiland  
Craig Taylor  
Beth Wirth

Lana Johnson, *Clerk*  
Ron Scharfer, *Treasurer*

# Happenings

## Russian Choir Resumes

Beginning February 2<sup>nd</sup>

Maria Dossin, our Organist and Music Director, is resuming rehearsals on Thursdays, 5:30-7 PM. We will sing at the Easter Vigil service on April 15<sup>th</sup>. You do not need to know Russian to join this choir. This is a fun choir and the music is beautiful! For information, email Maria at maria.dossin@gmail.com. The February 2<sup>nd</sup> rehearsal is offsite. The rest will be at St. Mary's.

+++++

## Flower Arranging Workshop

Saturday, February 4<sup>th</sup>, 11 AM to 1 PM

Learn the basics of arranging flowers while working with a team to create arrangements for the altars for Sunday, February 5<sup>th</sup>. Includes lunch. Questions? Contact Kim Davaz at 541-953-1973 or kim@davaz.net or Ty Zeller at tyzell@comcast.net. The workshop is free. You are invited to make a donation to our Flower Fund. Sign up at the table outside the Guild Room.

+++++

## LOGOS: The Word

Join us Monday, February 6<sup>th</sup>, from 7:30 to 8:30 PM as we travel the Bible with Brad+ and your fellow parishioners.

+++++

## Book Club

Monday, February 6<sup>th</sup>, 5:30-7:30 PM

After the 2016 presidential election, Lisa Lucas, the head of the National Book Foundation said, "My life is small, and I think books are a way to make your life larger." Beth Wirth will lead a group exercise of reading, discussion, and meditation on two texts from marginalized populations. On February 6<sup>th</sup> we will consider *Between the World and Me* by Ta-Nehisi Coates. This letter to his 15 year old son regards Coates' growing up and out of Baltimore's inner city. Similarly, J.D. Vance's *Hillbilly Elegy* reflects his journey through and out of an impoverished upbringing in Appalachia. This work will be the topic of conversation on Monday, April 3<sup>rd</sup>. Join us for a potluck meal and discussion in small and large groups.

+++++

## St. Mary's Widows' Group

Thursday, February 9<sup>th</sup> at 12:30 PM  
SweetWaters at the Valley River Inn

Questions? Contact Helga Nagygyor 541-343-0228 or Jean Shirey 541-607-1623

## Spirited Women!

Thursday, February 9<sup>th</sup> at 6:30 PM  
Hot Mama's Wings

ALL St. Mary's women are invited to join us for our annual Fat Thursday get together before Lent. As we have a great time eating wings, we will be sharing ways that we will be preparing for Lent. RSVP to Paula Ward at pmw@copper.net if you can join us.

+++++

## No Brainer Meeting

Thursday, February 16<sup>th</sup> at 6 PM  
Beer Stein

If you are in your 20s, 30s, or 40s, you are welcome to join in this low-key fellowship opportunity. This month we are meeting at Beer Stein (1591 Willamette St, Eugene) Questions? Contact Megan Lintner at meganlintner46@gmail.com.

+++++

## Contemplative Prayer

Saturday, February 18<sup>th</sup>, 1:30-3:00 PM

The service consists of rotating periods of sitting meditation and walking meditation with a short teaching period on some aspect of contemplation. Questions? Contact Geoff Colvin 541-915-1645 or geoffcolvin@comcast.net.

+++++

## Empty Nesters

Sunday, February 19<sup>th</sup> at 12:30 PM  
Hayden Bridge Tap House

The Empty Nesters will meet for lunch at the Hayden Bridge Tap House at 1910 Marcola Road in Springfield. Hayden Bridge Tap House is a small venue with lots of beer, cider, kombucha, and a little wine and soda. They also have a small menu of great and inexpensive Mexican food. More information is available at facebook.com/haydenbridgetaphouse/

### Epiphany Banners: A Cooperative Approach

By Carolyn Gates

In 2014, Donna Brown, Lynda Christianson, and Carolyn Gates responded to a call from the Liturgical Arts Committee to design and create banners for the season of Epiphany. We had a variety of ideas, which included knitted banners, light and airy organza, and the major stories of Epiphany. We decided to combine all of these ideas into one cohesive piece. This was a cooperative project at its best.



So began a two year process. Beginning in January of 2015 the three artists started work with the approval of the Vestry. Carolyn drew the design concepts on paper, and with Donna and Lynda, they began to envision how to translate the drawings into organza, knitting, and quilted pieces. They researched online to see if anyone had combined these elements before. But they had no luck finding anything like this. They would indeed be breaking new ground in fabric art by combining such disparate materials. 2015 was a year of trial and error and discovery, but by December they were not ready to present the 4 banner project for Epiphany. They asked for a year extension. 2016 was the year that the project really came together.

The banners are made of organza, with the symbolic elements quilted by Lynda. The knitted patterns were carefully selected to enhance the symbolism of the story being represented. They were beautifully made by Donna. The stories of Epiphany are varied, and each banner was created to help the viewer reflect on the richness of these stories.

The first banner shows the Star that shone for the birth of Jesus, the light that would lead others to the manger. The star is done with crazy quilt and beautiful stitching, and the knitted panel is a “Starlight” pattern that enriches the simplicity of the Star.

The second banner represents the coming of the Magi to the baby Jesus, and the gifts they brought from afar. The gold crowns are of a lightweight shimmery gold fabric called lamé. The knitted piece is a pattern in which Donna knit some of the circular parts with metallic gold yarn to represent gold coins and the gold which the wise men brought.

The third banner symbolizes the Baptism of Christ, and shows the Dove descending in blessing. The Dove is

another beautiful quilted and stitched piece created by Lynda. The knitted panel represents the water of baptism.

The fourth and final banner reminds us of the first miracle of Jesus at the Wedding of Cana, when He turned the water into wine. The quilted jug is pouring out the water, and as the colors change in the lovely knitted piece, we can see the water turning into wine.

This was an amazing project to be a part of, and Carolyn, Donna, and Lynda enjoyed working together throughout the ups and downs, the excitement of discovery and creativity, and the frustrations when things didn’t work. We learned a lot, and are thankful to have been able to persevere through the two years in order to produce something that we hope will be a blessing to everyone throughout the season of Epiphany.

Thanks to the anonymous donor who provided our budget for the project, to Tom Beckstrand for his consultation on hanging logistics, and for actually doing a trial hanging for us, and braving the snow and ice to hang them in time for Epiphany. A final thanks to the Liturgical Arts Committee for their encouragement, feedback and support throughout the project.

---

### First Floor Remodel Update

The first floor remodel steering committee met with the St. Mary’s office assistants, office staff, and Dustrud Architecture to discuss first draft options for the workroom and desk area modifications. The steering committee consists of Louise Fortuna, building manager; Hillary Kittleson, vestry liaison and Terrie Scharfer, project manager.

Several options for the space change were presented by Dustrud. All options were designed to improve the flow path through that area. Dustrud has some more questions to answer for us and details to work out before we can look at another draft and expand the pool of people from whom we gather input. Louise will work with office staff to determine storage and equipment needs in the work room to optimize organization of the new space, while Dustrud continues on the initial design of the remainder of the first floor.

Prior to presentation of the preliminary design of the entire first floor, sometime early second quarter, meetings with other stakeholders will be taking place. Other stakeholders include groups that use the impacted areas in regular and specific ways, such as Saturday Breakfast, Circle Service, and the Quilting Guild. We want to be sure that we are meeting our goals of improving access and flow and talking directly to stakeholders to ensure we are on the right track.

### Shop with eScrip and fund St. Mary's Try the new shopping app!



Get the App!

eScrip.com is a website that directs donations from participating merchants to various nonprofit organizations. The program is free to you – and St. Mary's receives money with every qualifying purchase.

eScrip is offering a new way to shop using your smart phone! The app is called Benefit Mobile and you can earn 3% - 20% for St. Mary's! This tool allows you to shop at "bricks and mortar" stores (not just online.) Sign up for Benefit Mobile and purchase online gift cards and then shop at real stores with your smart phone!

- ⇒ Get the Benefit Mobile app
- ⇒ Create an account
- ⇒ Link to your credit card or bank account
- ⇒ Designate St. Mary's as your beneficiary (look for our logo and don't forget the apostrophe)
- ⇒ Visit any of the *many* participating stores – Amazon is on the list!

For more information, contact our eScrip coordinator Kate Beckstrand at [ktbecks@comcast.net](mailto:ktbecks@comcast.net) or (541) 342-2782.

### Catch-Up Sunday February 5<sup>th</sup>

Ketchup is the perfect compliment to french fries, hot dogs, and tater tots. On Sunday, February 5th, Catching-Up your 2016 pledge to St. Mary's will be the perfect compliment to our 2017 pledge campaign. Catch-up Sunday is an important day because 72 parishioners have not completed their 2016 pledge. There are many reasons for this situation. We publicize Catch-Up Sunday to highlight the possibilities of an oversight or slow flowing catch-up.



\$5,000 in prior year pledges is assumed in our 2017 budget. This income is important in this year's tight budget. If you are wondering if you have completed your 2016 pledge, contact our Finance and Records Manager, Lana Johnson, at 541-343-9253 or [Lana@saint-marys.org](mailto:Lana@saint-marys.org), or refer to your 2016 year end giving statement, which was mailed January 17.

Sincerely,  
John Pfanner, 2016 Pledge Campaign Co-Chair

P.S. Come enjoy tomato ketchup on tater tots being served at the coffee hours on February 5<sup>th</sup>.

## ANNUAL MEETING & LUNCHEON

Sunday, February 12<sup>th</sup>  
Starting at 12:15 PM

We will start with a delicious chili and cornbread luncheon, then move to voting in our new Vestry, and some brief reports. We want you to join us to give your feedback on the future of St. Mary's. Sign up outside the Guild Room.

The morning worship services will be at their usual times. The Spanish service will begin at 2:00 PM.

Children's activities will be available during the meeting.



# St. Mary's Events

Sun	Mon	Tue	Wed
<p>Key:            CH = Church            CR = Conference Room            GR = Guild Room            LB = Library            BH = Berkold Hall (previously known as the Parish Hall)            PR = Piano Room  <b>Rooms with Biblical location names are classrooms and are located in the Sunday School wing.</b></p>			<p>1            9-5 Quilting Guild (G)            9:30 am Holy Eucharist  <i>anointing</i></p> <p>7:00 pm Liturgical Ch</p>
<p>5            8:00 am Holy Eucharist            9:30 am Holy Eucharist            10:15 am Sunday School (8th-10th graders—J2A class—stay in church for sermon followed by a 15 minute sermon check in over coffee and treats)            11:00 am Holy Eucharist            1:30 pm Spanish Eucharist            2:30 pm Presentación (BH)            3:00 pm Outreach Council Meeting (GR)            5:00 pm Joyful Noise Rehearsal (offsite - see Paula W)</p>	<p>6            8:30 am Morning Prayer (Chapel)            9:15 am PrayerBreath Yoga (BH)</p> <p>5:30-7:30 pm Book Club (GR)            7:30 pm LOGOS: The Word (Guild Room)</p>	<p>7 Evening at St. Mary's/Family Fun Night            8:30 am Morning Prayer (Chapel)            9:30-11 am Itty Bitty Bible Study (Nursery)</p> <p>12:00 pm Brown Bag Bible Study (Damascus)            1:15-3:15 pm Knifty Knitters (Damascus)</p> <p>5:30 pm Evening at St. Mary's/Family Fun Night (GR, BH, Damascus, Nursery, &amp; CH)            7:00 pm Order of St. Luke (Chapel)</p>	<p>8            9-5 Quilting Guild (G)            9:30 am Holy Eucharist  <i>anointing</i></p> <p>5:30-8:00 pm Men's C            Kitchen)</p> <p>7:00 pm Liturgical Ch</p>
<p>12 <b>Annual Meeting</b>            8:00 am Holy Eucharist            9:30 am Holy Eucharist            10:15 am Sunday School classes for Pre-k through 7th grade            10:15 to noon 8th-10th graders—J2A class—class and lunch in conference room            11:00 am Holy Eucharist            12:15 pm Annual Meeting &amp; Luncheon            1:30 pm Spanish Eucharist            5:00 pm Joyful Noise Rehearsal (offsite - see Paula W)</p>	<p>13 Alert: Office will be CLOSED NEXT Monday for Presidents' Day            8:30 am Morning Prayer (Chapel)            9:15 am PrayerBreath Yoga (BH)</p>	<p>14            8:30 am Morning Prayer (Chapel)            9:30-11 am Itty Bitty Bible Study (Nursery)</p> <p>12:00 pm Brown Bag Bible Study (Damascus)            1:15-3:15 pm Knifty Knitters (Damascus)</p>	<p>15 <b>March Bellring</b>            9-5 Quilting Guild (G)            9:30 am Holy Eucharist  <i>anointing</i></p> <p>7:00 pm Liturgical Ch</p>
<p>19 Blood Pressure Checks (Library)            8:00 am Holy Eucharist            9:30 am Holy Eucharist            10:15 am Sunday School classes for Pre-k through 7th grade            10:15 to noon 8th-10th graders—J2A class—class and lunch in conference room            11:00 am Holy Eucharist            12:30 pm Empty Nesters get together (Hayden Bridge Tap House 1910 Marcola Rd, Springfield)            1:30 pm Spanish Eucharist            No Joyful Noise Rehearsal</p>	<p>20 <b>Presidents' Day - Office Closed</b>            8:30 am Morning Prayer (Chapel)            9:15 am PrayerBreath Yoga (BH)</p>	<p>21            8:30 am Morning Prayer (Chapel)            9:30-11 am Itty Bitty Bible Study (Nursery)</p> <p>12:00 pm Brown Bag Bible Study (Damascus)            1:15-3:15 pm Knifty Knitters (Damascus)</p> <p>7:00 pm Order of St. Luke (Chapel)</p>	<p>22            9-5 Quilting Guild (G)            9:30 am Holy Eucharist  <i>anointing</i></p> <p>7:00 pm Liturgical Ch</p>
<p>26            8:00 am Holy Eucharist            9:30 am Holy Eucharist &amp; Rite 13 Ceremony            10:15 am Sunday School (8th-10th graders—J2A class—stay in church for sermon followed by a 15 minute sermon check in over coffee and treats)            11:00 am Holy Eucharist            1:30 pm Spanish Eucharist            3:00 pm ECW Movie Matinee (Damascus)            No Joyful Noise Rehearsal</p>	<p>27            8:30 am Morning Prayer (Chapel)            9:15 am PrayerBreath Yoga (BH)</p> <p>12:00 pm Liturgical Arts Committee mtg (Damascus)</p>	<p>28 <b>Shrove Tuesday</b>            8:30 am Morning Prayer (Chapel)            9:30-11 am Itty Bitty Bible Study (Nursery)            12:00 pm Brown Bag Bible Study (Damascus)            1:15-3:15 pm Knifty Knitters (Damascus)            5:15 pm Lighting the Fire—Burning Palms for Ashes (courtyard)            5:30-7 pm Shrove Tuesday Pancake Supper &amp; Celebration (BH, GR, Damascus, &amp; Nursery)</p>	<p>March 1 <b>Ash Wed</b>            9-5 Quilting Guild (Gui            9:30 am Holy Eucharist</p> <p>Noon Holy Eucharist an</p> <p>5:30 pm Children's Serv            BH)</p> <p>7:00 pm Liturgical Choir            7:30 pm Holy Eucharist</p>

# s - February 2017

Wed	Thu	Fri	Sat
<p>Guild Room) ist with healing and</p> <p>Choir (Church)</p>	<p>2</p> <p>8:00 am Centering Prayer (GR)</p> <p>9:15 am PrayerBreath Yoga (GR)</p> <p>12:30 pm Needle Arts Guild (GR)</p> <p>5:30 pm Needle Arts Guild (GR)</p>	<p>3</p> <p>8:30 am Morning Prayer (Chapel)</p> <p>10:30 am Lectionary Group (GR)</p> <p>1:30 pm Prayer Breath Yoga (GR)</p>	<p>4</p> <p>9:45 am Altar Guild Meeting (GR)</p> <p>11 am–1 pm Flower Arranging Workshop (BH)</p> <p>5:00 pm Circle Service (GR)</p>
<p>Guild Room) ist with healing and</p> <p>Club (GR &amp; BH)</p> <p>Choir (Church)</p>	<p>9</p> <p>8:00 am Centering Prayer (GR)</p> <p>9:15 am PrayerBreath Yoga (BH)</p> <p>12:30 pm Widows' Group (meeting at SweetWaters at the Valley River Inn)</p> <p>12:30 pm Needle Arts Guild (GR)</p> <p>5:30 pm Needle Arts Guild (GR)</p> <p>6:30 pm Spirited Women (Hot Mama's Wings)</p>	<p>10</p> <p>8:30 am Morning Prayer (Chapel)</p> <p>10:30 am Lectionary Group (GR)</p> <p>1:30 pm PrayerBreath Yoga (GR)</p>	<p>11</p> <p>9:30 am Saturday Breakfast (BH)</p> <p>5:00 pm Circle Service (GR)</p>
<p><b>ger Deadline</b></p> <p>Guild Room) ist with healing and</p> <p>Choir (Church)</p>	<p>16</p> <p>8:00 am Centering Prayer (GR)</p> <p>9:15 am PrayerBreath Yoga (BH)</p> <p>12:30 pm Needle Arts Guild (GR)</p> <p>5:30 pm Needle Arts Guild (GR)</p> <p>6:00 pm 20s/30s/40s Get Together - the "No Brainer" Meeting (at Beer Stein 1591 Willamette St, Eugene)</p>	<p>17</p> <p>8:30 am Morning Prayer (Chapel)</p> <p>10:30 am Lectionary Group (GR)</p> <p>1:30 pm PrayerBreath Yoga (GR)</p>	<p>18</p> <p>1:30-3:00 pm Contemplative Prayer (GR)</p> <p>5:00 pm Circle Service (GR)</p>
<p>Guild Room) ist with healing and</p> <p>Choir (Church)</p>	<p>23</p> <p>8:00 am Centering Prayer (GR)</p> <p>9:15 am PrayerBreath Yoga (BH)</p> <p>12:30 pm Needle Arts Guild (GR)</p> <p>5:30 pm Needle Arts Guild (GR)</p>	<p>24</p> <p>8:30 am Morning Prayer (Chapel)</p> <p>10:30 am Lectionary Group (GR)</p> <p>1:30 pm PrayerBreath Yoga (GR)</p>	<p>25</p> <p>9:30 am Saturday Breakfast (BH)</p> <p>5:00 pm Circle Service (GR)</p>
<p><b>nesday</b></p> <p>ld Room) and Imposition of Ashes</p> <p>nd Imposition of Ashes</p> <p>rice and Supper (CH &amp;</p> <p>r (Church)</p> <p>and Imposition of Ashes</p>	<p>March 2</p> <p>8:00 am Centering Prayer (GR)</p> <p>9:15 am PrayerBreath Yoga (GR)</p> <p>12:30 pm Needle Arts Guild (GR)</p> <p>5:30 pm Needle Arts Guild (GR)</p>	<p>March 3</p> <p>8:30 am Morning Prayer (Chapel)</p> <p>10:30 am Lectionary Group (GR)</p> <p>1:30 pm Prayer Breath Yoga (GR)</p>	<p>March 4</p> <p>9:45 am Altar Guild Meeting (GR)</p> <p>5:00 pm Circle Service (GR)</p>

## Children, Youth, and Families News



*Above photos are from the December Evening at St. Mary's/ Family Fun Night. Thank you to everyone who made it an amazing evening.*

### Saint Valentine's Evening at St. Mary's / Family Fun Night Tuesday, February 7<sup>th</sup> 5:30 to 7:00 PM

5:30 PM - Social Time in the Guild Room (*separate kids' activities*)

6:00 PM - We bring everyone together for a short program in the church

6:15 PM - Delicious dinner in the Parish Hall

Join in on another evening of entertainment, social hour, great food, children's activities, and lively conversation. Sign up, and let us also know if you can help with set-up or cleanup.



*One of the January Sunday School lessons was about Micah and Amos, two Old Testament prophets who spoke out about helping people in need. The Pre-K-1st grade class' activity that day was to decorate gift bags for children at First Place Family Center, a local non-profit that helps homeless families. We included art supplies and toothbrushes, both of which are desperately needed.*

### Sunday School Snacks Needed for February and March

Can you help with snacks for our Sunday school classes? There is a sign up sheet in the Sunday school hallway for families to help out with this and give our program your support. Thank you to those families that have already supported this.

### Shrove Tuesday February 28<sup>th</sup> 5:30 to 7:00 PM

Join in the fun and celebrate Shrove Tuesday with your entire family. There will be festive activities, as well as a pancake dinner. If you would be willing to help with the children's crafts and activities please contact Sue Ann at [sueann@saint-marys.org](mailto:sueann@saint-marys.org)

AND... Mark your calendar for:

### Ash Wednesday Children's Service & Dinner March 1<sup>st</sup> 5:30 to 7:00 PM

This Ash Wednesday service, designed for children and families, is followed by a simple supper. This service will include the imposition of ashes and the Holy Eucharist.



### J2A Meeting Schedule

February 5<sup>th</sup> - Sermon and Reflection  
February 12<sup>th</sup> - Full Class 10:15 to Noon  
February 19<sup>th</sup> - Full Class 10:15 to Noon  
February 26<sup>th</sup> - Sermon and Reflection

### Cherub Choir Information Children Pre-K to 3<sup>rd</sup> Grade

ALL St. Mary's children between Pre-K through 3<sup>rd</sup> grade are automatically in Cherub Choir, because they get music as part of their Sunday School. All of these children are invited to sing with us on (usually) the first Sunday of the month. Here is the schedule through May. The only change is that we are off the first week in April due to Spring Break, and will sing on April 16<sup>th</sup> for Easter.



We will meet at 9:00 AM in the Sanctuary on:

February 5<sup>th</sup>  
March 5<sup>th</sup>  
April 9<sup>th</sup> (all kids are invited to lead the procession for Palm Sunday)  
April 16<sup>th</sup> - (Easter - Combined anthem with Joyful Noise)  
May 7<sup>th</sup>



The Outreach Ministry Council meeting date has been changed to Sunday, February 5<sup>th</sup>. You are invited to attend this meeting at 3:00 PM in the Guild Room.



### Earth Stewards

#### Planes, Trains, Buses, Cars---and Carbon Offsets

One of the biggest contributors to carbon dioxide in the atmosphere is our means of transportation. That being said, some forms have less impact than others. Air travel is the worst, although airlines have recently been increasing their fuel efficiency and reducing the number of flights so that planes are flying closer to full capacity. Trains are the best choice and a small car with three people is a good second choice.

If you travel by plane and have calculated your carbon footprint, you are acutely aware of how much your air miles add to your carbon footprint. (If you haven't calculated your carbon footprint yet, the Internet has several sites that will help you do that, or ask a member of the Earth Stewards committee to help you.)

If you must travel by plane for business, to visit family, or for other non-leisure reasons, you can buy carbon offsets to help alleviate your impact on the environment. When buying carbon offsets, you should consider whether they are real, verifiable, enforceable and permanent. A good article discussing these points is the National Resources Defense Council article "Should You Buy Carbon Offsets" which you can find on the Internet.

Two suggested places to buy carbon offsets are **Terrapass**, which has the choice of contributing monthly to their projects or choosing a specific project, and **Native Energy** which funds new projects rather than existing projects. Both of these can be researched on the Internet.

So how many carbon offsets should you purchase if you are traveling by plane? There are MANY factors that affect carbon dioxide production such as type of plane, long or short flight, or amount of cargo being carried, but a general number to use is 0.24 pounds of carbon dioxide per passenger per mile.

We are in the process of doing more research in this area and hope to have a longer information sheet available in the near future. We hope to include in this local projects to which you can contribute money, or actually get your hands dirty by helping with the project. A couple examples of these organizations are the Mackenzie River Trust, the Long Tom Watershed Council and Friends of Buford Park and Mt. Pisgah.

### “Raising Diverse Voices of Faith to Strengthen Oregon Communities”

2017 Interfaith Advocacy Day hosted by Ecumenical Ministries of Oregon – Tuesday, February 7

St. Mary's is a member of Ecumenical Ministries of Oregon which is hosting this important day in Salem. It starts at St. Mark Lutheran Church, 790 Marion St. NE, Salem at 9:00 AM when the Guest Speaker will be the Attorney General for the State of Oregon, Ellen F. Rosenblum. In the afternoon everyone will move over to the Oregon State Capitol to talk with their legislators. To register for this advocacy day in Salem go to [www.eventbrite.com/e/interfaith-advocacy-day-2017-tickets-29263710546](http://www.eventbrite.com/e/interfaith-advocacy-day-2017-tickets-29263710546) Cost: \$20 general and \$10 student with ID and includes continental breakfast, lunch and materials. For more information, visit [emoregon.org](http://emoregon.org) or call 503-221-1054. Or contact Katharine Hunt 541-607-0106 [keehhunt@gmail.com](mailto:keehhunt@gmail.com).

### That's My Farmer

A big thank you for taking part in That's My Farmer (TMF) alternative gift program this year. By donating funds to the TMF Low Income Fund during the Christmas



season people who can least afford it will have the opportunity to obtain a Food Share with a local farmer. If you would like information about TMF please contact Katharine Hunt 541-607-0106.

ECW Presents  
MOVIE MATINEE



**Florence Foster Jenkins**  
Starring Meryl Streep and Hugh Grant

The story of a New York heiress who dreamed of becoming an opera singer, despite having a terrible singing voice.

Damascus Classroom  
Sunday, February 26th  
It will NOT snow!

3 PM to 5 PM ... With Popcorn!  
All Are Welcome!  
Contact: Deacon Nancy Crawford

**National Church Women United 100 Days of Prayer**

The National Church Women United invites everyone to participate in praying for the nation for 100 days (through April 30th). Invite others to join you in this daily devotion. There is a weekly prayer conference call every Wednesday at 9:00 AM PST which is led by clergy people from all parts of the United States. The first one took place on January 25th. The Rev. Deacon Nancy Crawford will be leading the prayer conference on March 22<sup>nd</sup>. For more details see the flyer on the bulletin board, visit [www.cwu.org](http://www.cwu.org) or contact Katharine Hunt 541-607-0106 or [keehhunt@gmail.com](mailto:keehhunt@gmail.com).

**Church Women United**

**FEBRUARY FORUM "Salem Actions for Tax Justice"**

Our discussion will be led by Chuck Sheketoff, Executive Director of the Oregon Center for Public Policy (OCPP). He will be joined by Rep. Phil Barnhart and Commissioner Pete Sorenson.

**Friday, February 3** 9 – 11 AM - Wesley Community Center, 2520 Harris St.

AND **Tuesday, February 7** 7:30 AM Breakfast at Brails 1983 Willamette St.

**LOOKING AHEAD TO MARCH** Join us for our World Day of Prayer celebration.

Saturday, March 4 - United Lutheran, 2230 Washington St.  
9:00-11:15 AM

The theme of our worship service is "Am I Being Unfair to You?", written by the WDP Committee of the Philippines. It invites us to explore concepts of economic justice and our response in the light of God's generosity.

**WOMEN'S RETREAT**  
**APRIL 28-30**  
**AT GROVE CHRISTIAN CAMP**

"Walking in Grace" is the theme for this year's retreat. Cammie Bella, a licensed Spiritual Director from Episcopal Church of the Good Samaritan will be with us to lead us and share her insight on finding grace in our everyday lives.

More information on the program for the weekend, registration cost and partial scholarship availability will be in the March Bellringer.

**2017 SPIRITUALITY DAY**  
**MAY 20**  
**AT ST. PAUL'S, SALEM**

This day begins with Eucharist and continues with a keynote speaker and workshops on interesting topics for personal and spiritual growth that emphasize the theme

"Seeking Wellness: Keep it Simple Sister." A delicious luncheon will be served by the women of St. Paul's, and there will be time to visit the marketplace with jewelry, knitted items, cards, and other gifts for women by women. The day is fun, uplifting, and collegial. Cost is \$25. More information will be in upcoming Bellringer issues.



**DO YOU HAVE IDEAS FOR WOMEN'S ACTIVITIES FOR 2017?**

We have several things planned for 2017:

- \*Once a month Sunday matinee or Thursday evening movies
- \*Spirited Women Group activities on 2nd Thursdays
- \*Our annual Women's Retreat in April
- \*United Thank Offering collection in May
- \*The Diocesan Women's Spirituality Day in May
- \* Diocesan ECW Luncheon at Convention in Salem in fall
- \* Cutting out and sewing HO!HO!HO! Christmas stockings in November
- \* The Advent Fair table sales in December

We welcome your ideas and involvement in all of these activities. We also welcome your ideas and involvement in planning other activities for women. Call or Email Deacon Nancy Muhlheim (541-913-3364 or [Nancy.muhlheim@gmail.com](mailto:Nancy.muhlheim@gmail.com)).

## News of the Family

### Interview with an Author

by Deacon Nancy Crawford

One of the more delightful surprises of December's Advent Fair was the discovery that we have a published author in our parish and she is only six years old! Genevieve, or Ginny, is the daughter of Peter and Tammy Verrey and big sister of Lillian. Ginny donated several signed copies of her book "The Lemonade, Cookie, and Book Stand" to the Advent Fair with proceeds to go to ECW and she donated one signed copy to our parish library. The book is sold at Dancing Weasel Toy Store located at 30 E 17th Avenue, Eugene.



The author with her book.

So what inspires such a young girl to write and illustrate her own book? Her mom, Tammy, hosted a book party at their home and Ginny thought, well, she could write a book, too. As many great authors do, Ginny writes about what she knows: books, cookies, and lemonade stands. Her vivid imagination added a cookie-loving dragon that travelled a long way to visit Genevieve's stand.

When asked what is the hardest part of writing and illustrating a book? Ginny replied: "Spelling." But spelling a word correctly is what mothers are for.

Ginny has moved on to new challenges. She has been writing plays for her school, Far Horizons, and writing poetry, too. Here is a sample of her work, "The Cookie Poem".

I bite into a cookie,  
a very, very big one,  
but when I take a tiny bit,  
The cookie is gone.

+++++

The Forrest family has grown. Julian Aubrey, son of Christy and Mark, was born in early January. Julian's older brother and sisters are enjoying getting to know their new baby brother. Welcome Julian!

A funeral was held January 12th for Douglas Green, husband of Sally Green.

A Presentación of Janet Chavez Santiago was held January 20th.

A celebration of 35 years of Ted and Penny's ministry at St. Mary's and the dedication of Berkbold Hall was held on January 29th.

## Rector's Closing Thoughts

Our Sunday scripture readings follow a schedule called a lectionary. The Sunday eucharistic lectionary is on a three-year cycle: Years A, B, and C. Each year we primarily follow a different "synoptic" gospel - Matthew, Mark, or Luke. What about John? The Fourth Gospel gets sprinkled around all three years. This year - year A - is the year of Matthew.

One of Matthew's primary focuses is discipleship. Yes, there are disciples and discipleship in the other gospels, but there is a particular focus in Matthew. Pay attention to the Gospel the next few Sundays and you will hear examples of Jesus' teaching. We are in a section in which Jesus is especially focused on teaching, making himself into a new Moses. He is more than Moses, of course, as we will remember on the final Sunday this month.

The community as Matthew describes it is one of learners under the one teacher, Jesus. These are not students who will ever fully become the teacher themselves.

*All of us are disciples*

*learning at the feet of our teacher Jesus.*

*Even the leaders.*

Even the leaders are perpetual students under Jesus. And students sometimes get it

wrong, which means that even leaders, like we

will see the original twelve disciples do time and again this year, make mistakes. But getting it right isn't the point; learning at the feet of Jesus is. The church is a community growing in their knowledge of God and God's will for them as Jesus teaches us.

All of us here at St. Mary's, in the Diocese of Oregon, in the Episcopal Church, and throughout the Church Universal, are disciples learning at the feet of our teacher Jesus. Even the leaders. I don't have all the answers - none of us do - we are all learning what God is teaching us and where God is leading us together. Leaders may do something that sometimes seems like teaching, but it is really more just pointing back to Jesus. As we work through Matthew's Gospel, I encourage you this year to imagine yourself as a disciple of Jesus, for that is what you are. And I encourage you to commit yourself to grow in faith. We learn directly from Scripture, we learn in sermons, we learn in our prayer, but I encourage you to intentionally work on going beyond that. Maybe come to a Bible study or join the book discussion group this month. Maybe join our Lenten program in March. Brad+ and I are always happy to meet with you to plan out a course of individual study for yourself. The how isn't particularly important; the important thing is growing in your faith.

- Bingham+



## THE BELLRINGER

St. Mary's Episcopal Church  
1300 Pearl Street  
Eugene, Oregon 97401

Non-Profit Organization  
U.S. Postage Paid  
Eugene, Oregon  
Permit #35

RETURN SERVICE REQUESTED

# February 2017



[www.facebook.com/  
st.marys.eugene](http://www.facebook.com/st.marys.eugene)

### Inside this issue:

Adult Education	3
Annual Meeting & Luncheon	5
Building News	3
Children, Youth, & Family News	8
Contemplative Prayer	5
Episcopal Church Women	10
Evening at St. Mary's	Cover
Finance & Administration	5
Flower Arrangement Workshop	3
Happenings—Small Groups	3
Holiday Office Hours	2
How We Live	2
News of the Family	11
Outreach	14
Rector's Closing Thoughts	11
Russian Choir	3
Shrove Tuesday Pancake Supper	Cover
Spirited Women	3

## Ash Wednesday - March 1<sup>st</sup>

Come to St. Mary's for Holy Eucharist and Imposition of Ashes

**Morning - 9:30 AM**

**Noon - 12 Noon**

**Night -**

**Children's Service & Supper - 5:30 PM**

This Ash Wednesday service, designed for children and families, is followed by a simple supper. This service will include the imposition of ashes and the Holy Eucharist.

**Traditional Holy Eucharist and Imposition of Ashes**  
at 7:30 PM

All are welcome to worship at St Mary's, no matter what age, ethnicity or race, gender, sexual orientation, or economic and social circumstances.