



# FORK CREEK

---

*Quality Craftsmanship in the Amish Tradition*



# ***STANDARD FEATURES***

## **FOR FORK CREEK "CABIN" PARK MODELS**



### **INTERIOR**

½" Finished Drywall Cathedral Ceiling w/Light Stipple Finish  
1/2" x 6" Tongue & Groove Pine on Interior Walls  
Overhead Lighting  
Solid Pine Window Sills  
"Woodlook" No Wax Vinyl Flooring Throughout  
Solid Pine Interior Doors 2/2 x 6/8 with Standard Lockset  
Pine Heavy Profile Trim & Moldings Throughout  
Cable Jacks – Per Plan  
Loft Area – Per Plan

### **CABINETRY**

Pine Kitchen Cabinetry  
Cabinet Crown on Overhead Cabinets  
Concealed Cabinet Door Hinges  
Drawer-Over-Door Base Cabinets  
Dovetail Drawer Boxes  
Soft-Close Door and Drawer Hardware  
Designer Coordinated Door and Drawer Pulls  
Adjustable Shelving in Overhead Cabinets  
Shelving in All Base Cabinets

### **UTILITIES**

PTAC In-Wall Heating & Cooling Unit  
Thru-Wall Ventilation Fans in Bedrooms  
20 or 30 Gallon Electric Water Heater – Per Plan  
PEX Hot & Cold Water Lines and Schedule 40 Drain Lines  
Enclosed Water and Drain Lines  
Water Shut-Offs at All Fixtures  
50 Amp Electric Service with Pigtail  
Hard-Wired Smoke Alarms with Battery Back-Up  
Copper Wiring Throughout  
GFCI Protected Exterior Receptacle  
GFCI Protected Receptacle(s) in Wet Areas

### **KITCHEN**

Single Bowl Stainless Steel Kitchen Sink  
Peerless by Delta® Single Lever Faucet with Sprayer  
Wilson Art® or Formica® Laminate Counter Tops, 25" Deep  
4" Laminate Backsplash on All Counters  
Name Brand Appliances - Per Plan (Color: White)

### **CODES**

One Fire Extinguisher  
Smoke Alarm & CO Detector in Living Area  
Propane Detector (if there are fuel-burning appliances)  
ANSI 119.5

### **BATH**

32" x 32" Shower or 4' Tub/Shower - Per Plan  
Pedestal Bathroom Sink  
Peerless by Delta® Single Lever Faucets on all Fixtures  
20" x 24" Mirror Above Bathroom Sink  
7" x 18" Shelf Above Bathroom Sink  
Broan® Lighted Exhaust Fan in Each Bath  
1.6 Gallon Round Front Water Saver Commode  
Towel Bar and Tissue Holder  
All Bath Fixtures are White

### **EXTERIOR**

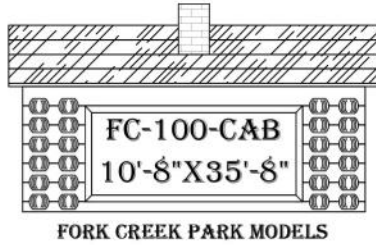
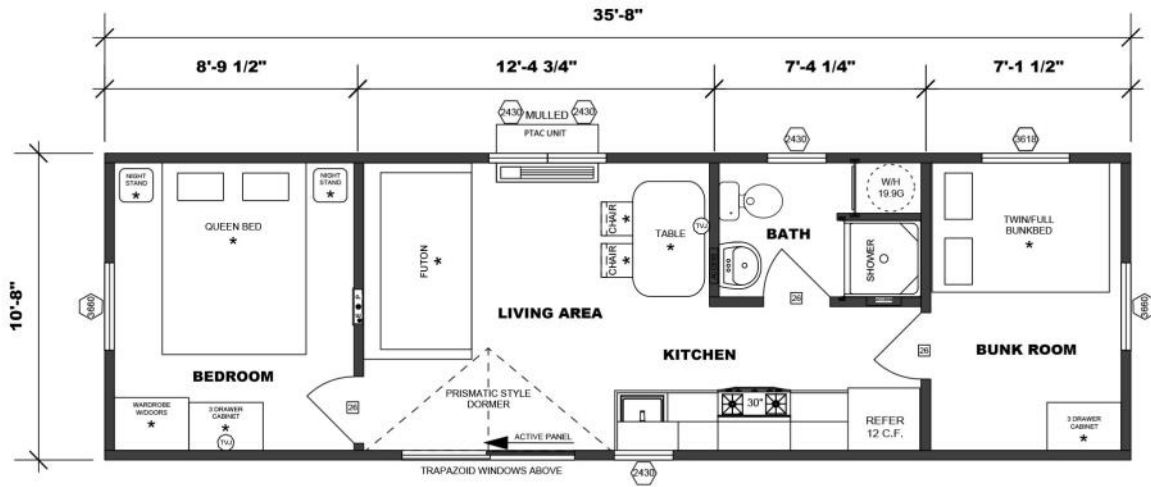
"Smart Lap" Exterior Siding  
Tyvek House Wrap  
White Thermopane Vinyl Windows with Grids  
7/16" OSB Exterior Sheathing (Omitted w/Opt. Board & Batten)  
36" Fiberglass Entrance Door or Sliding Patio Door - Per Plan  
Exterior Light at Entrance Door  
12" Roof Overhangs on Both Gable Ends  
Standard Seam (Screw Down) Metal Roof (Choice of 3 Colors)  
"Standing Seam" Metal Roof on Loft Area Only  
White Fascia and Soffit

### **CONSTRUCTION**

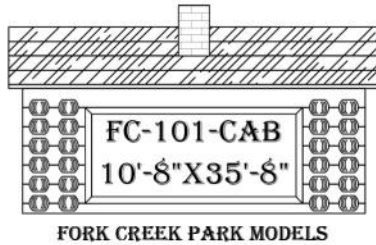
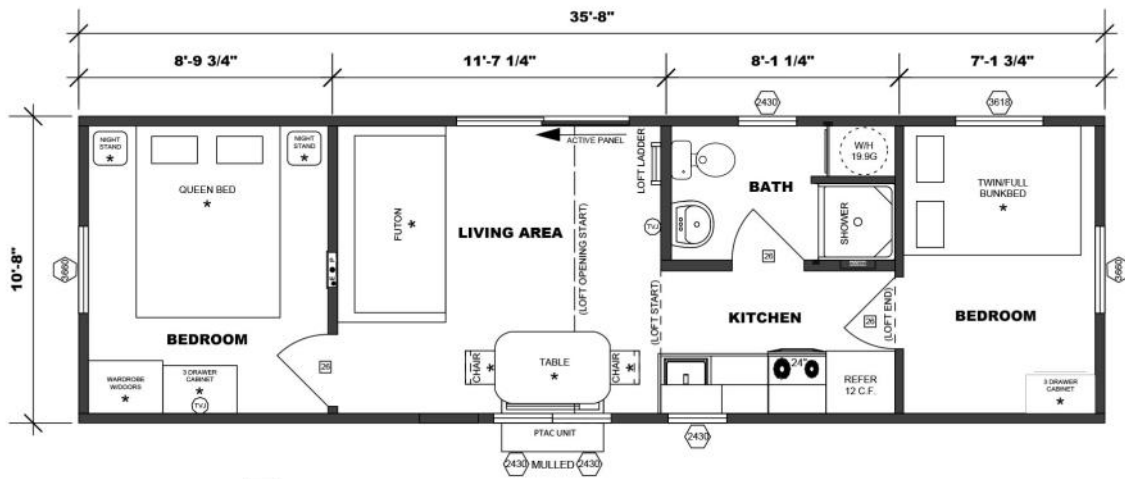
All Wall Studs, Roof Trusses, & Floor Joists 16" On-Center  
7' 4" High Sidewalls with Dutch Cathedral Ceilings Standard  
¾" Tongue and Groove OSB Floor Decking  
2" x 4" Exterior Walls with R13 Fiberglass Insulation  
2" x 6" Floor Joists with R19 Fiberglass Insulation  
5.5/12 Roof Pitch (On units 12' wide or less)  
Nominal Pitch on Loft Area, where applicable  
7/16" OSB Roof Sheathing  
R19 Fiberglass Ceiling Insulation  
10" I-Beam Frame with Detachable Hitch  
Rodent Resistant Underbelly

***Don't want the  
look and feel of a  
"Cabin?"***

***We also build "Cottages"  
which feature maintenance  
free vinyl siding, a shingled  
roof, and white interior trim.***



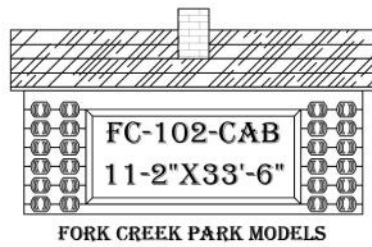
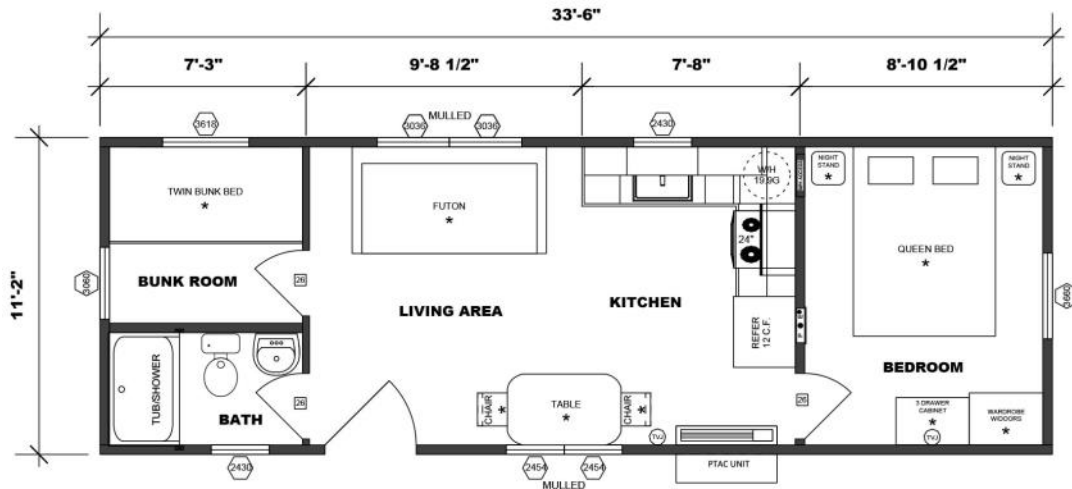
## FOREST GLEN CABIN



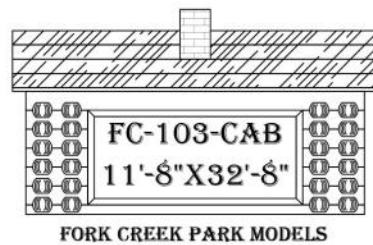
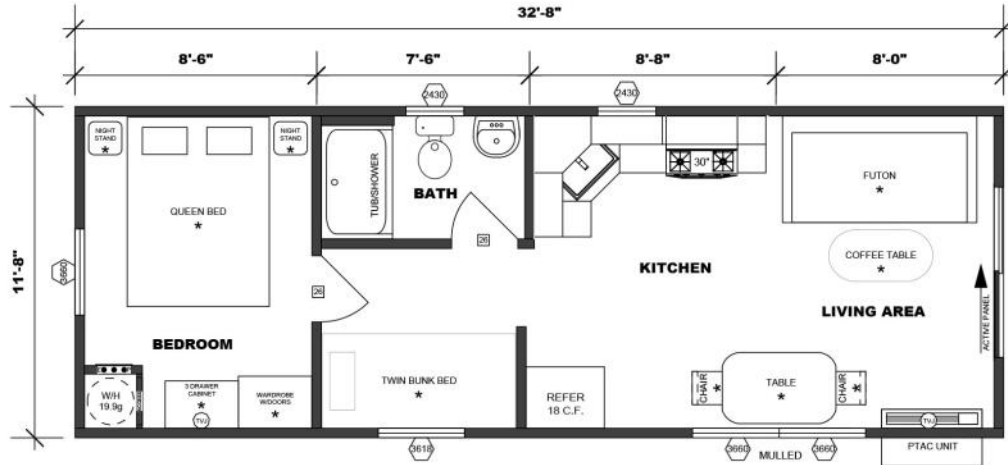
## FOREST GLEN CABIN W/LOFT

**\*DENOTES OPTIONAL FURNITURE AND CABINETRY**



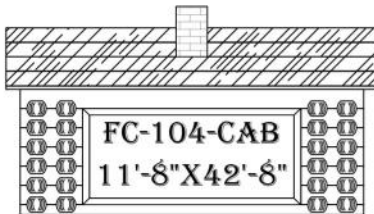
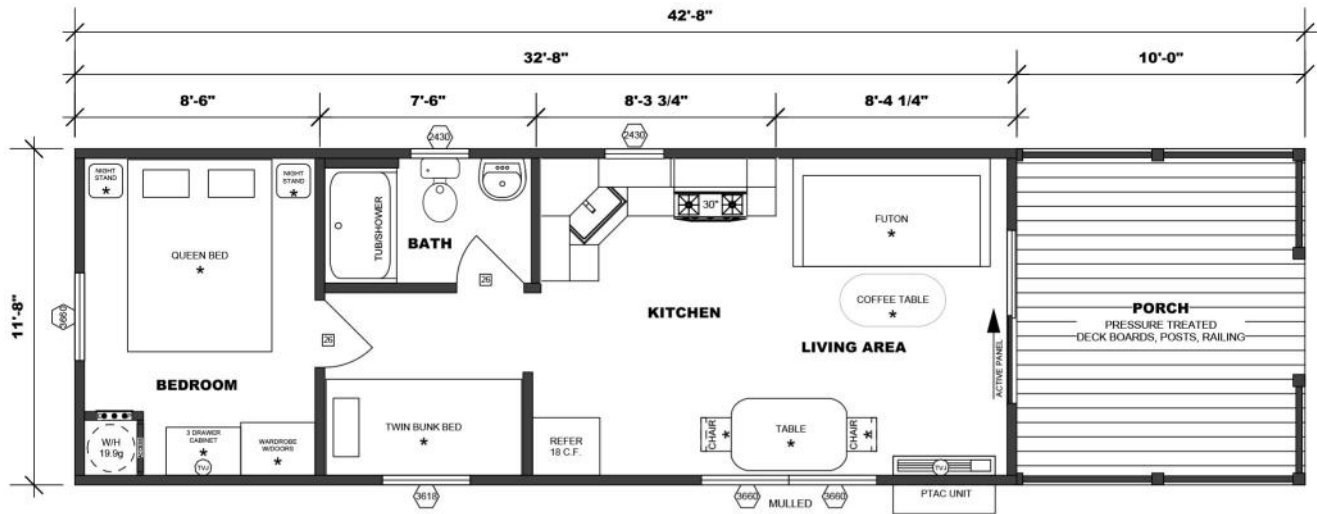


## ADVENTURE CABIN



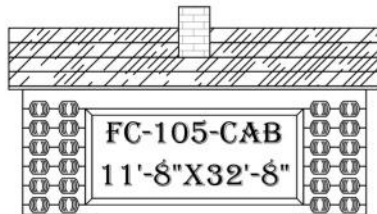
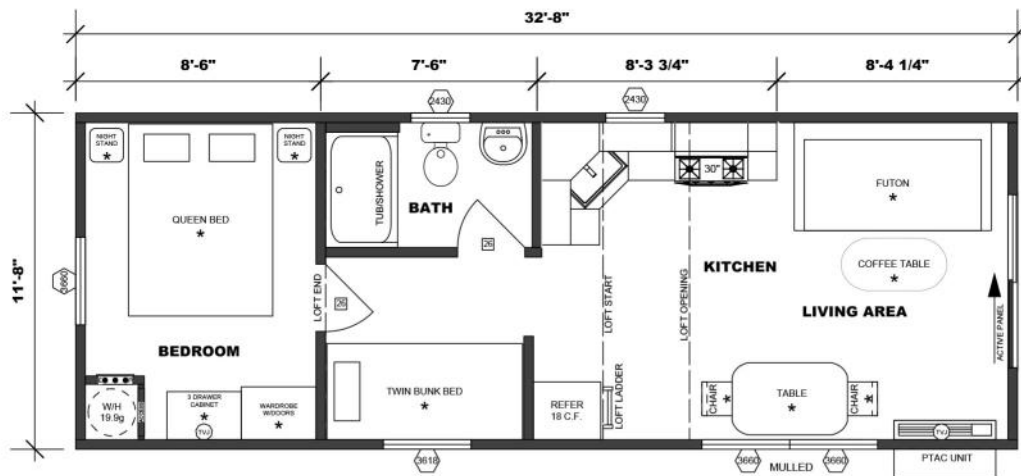
## PINE FOREST CABIN

\*DENOTES OPTIONAL FURNITURE AND CABINETRY



FORK CREEK PARK MODELS

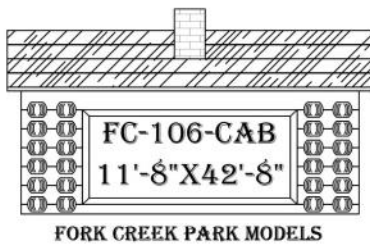
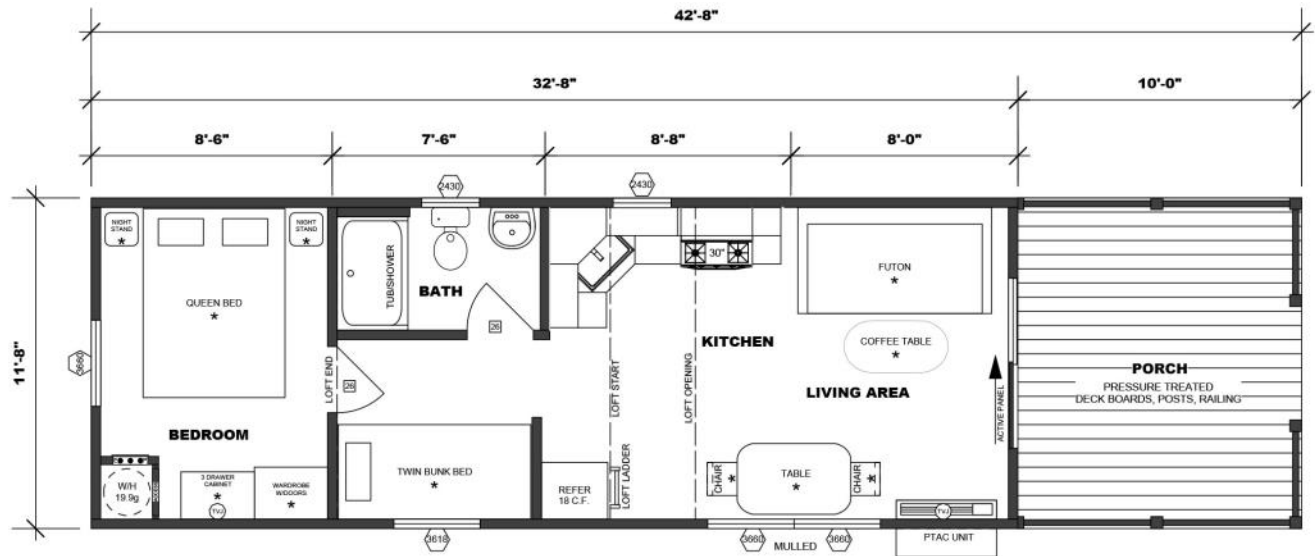
## PINE FOREST CABIN W/PORCH



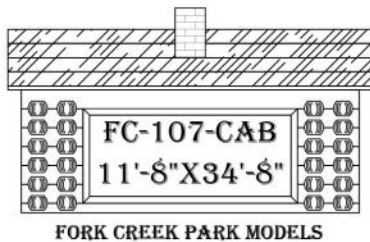
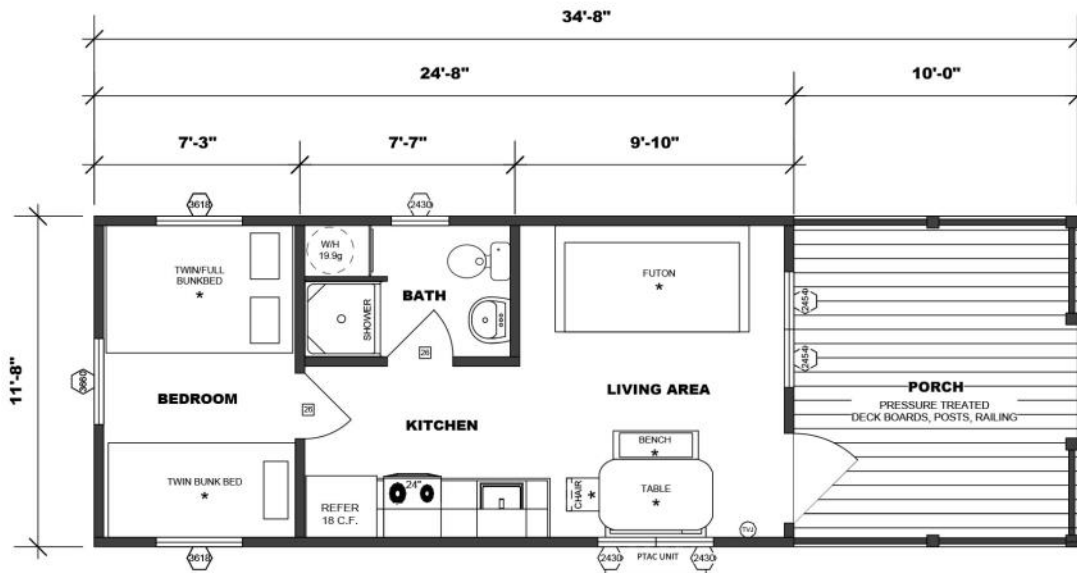
FORK CREEK PARK MODELS

## PINE FOREST CABIN W/LOFT

\*DENOTES OPTIONAL FURNITURE AND CABINETRY

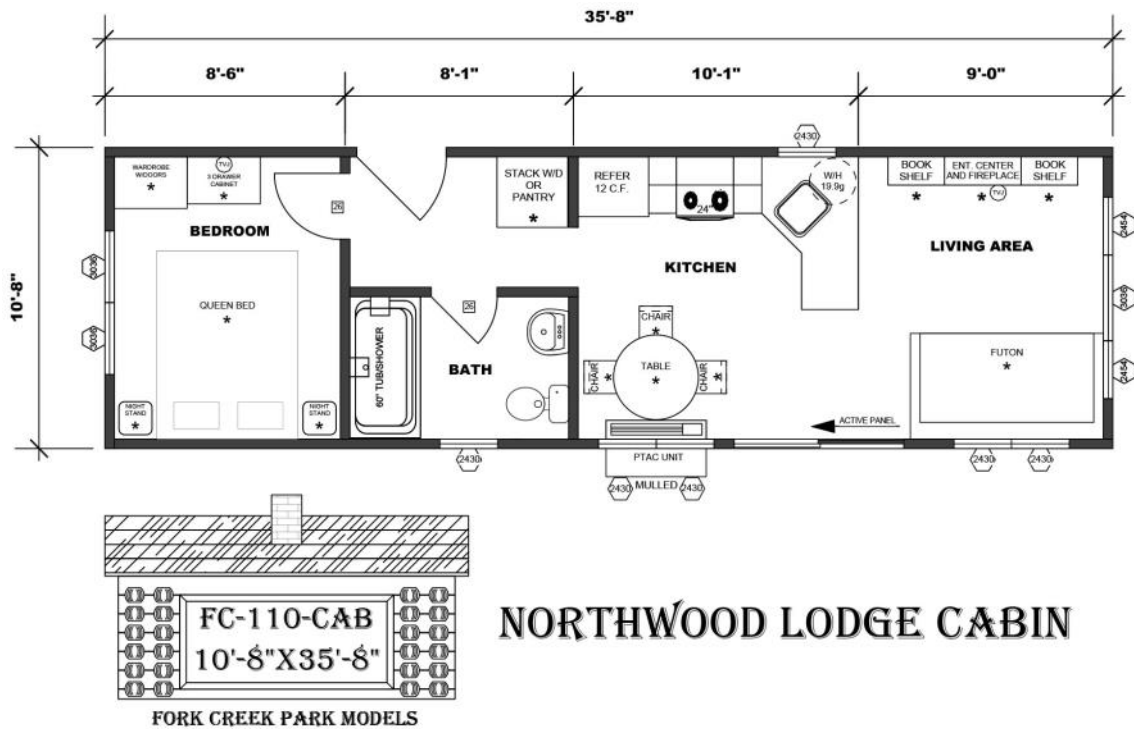


## PINE FOREST CABIN W/LOFT & PORCH

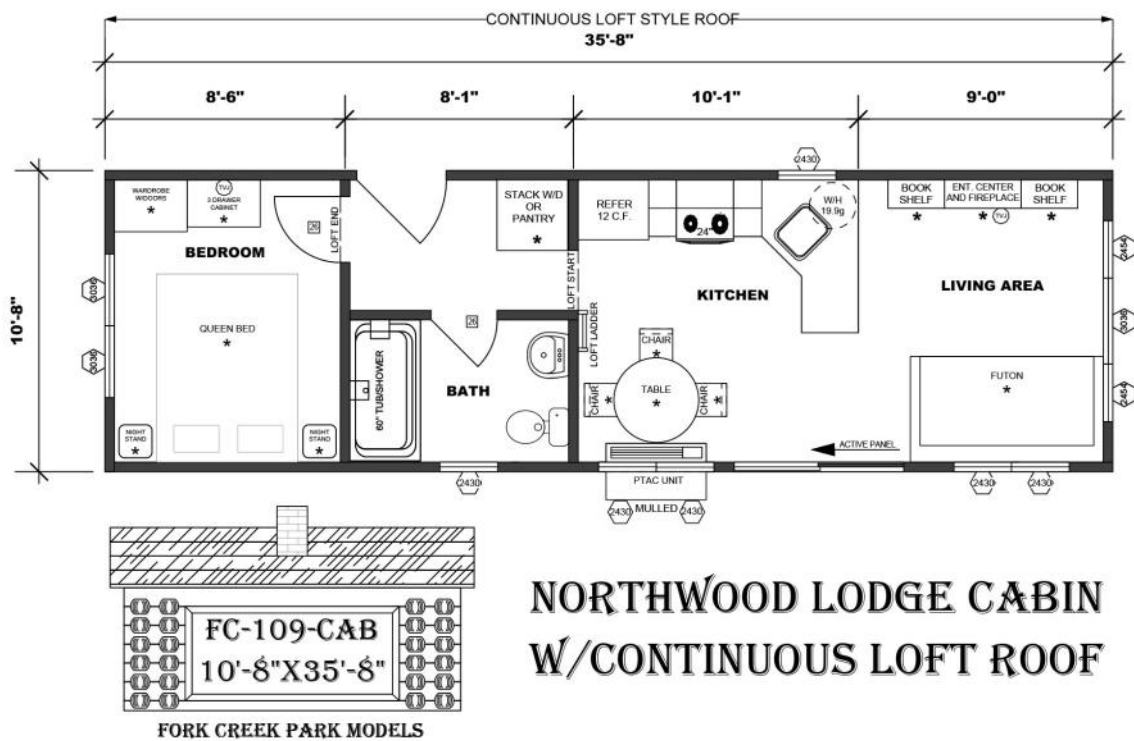


## PINE RIDGE CABIN

\*DENOTES OPTIONAL FURNITURE AND CABINETRY

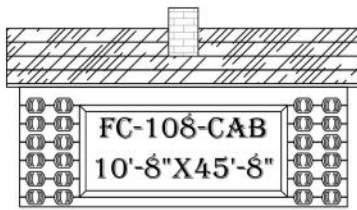
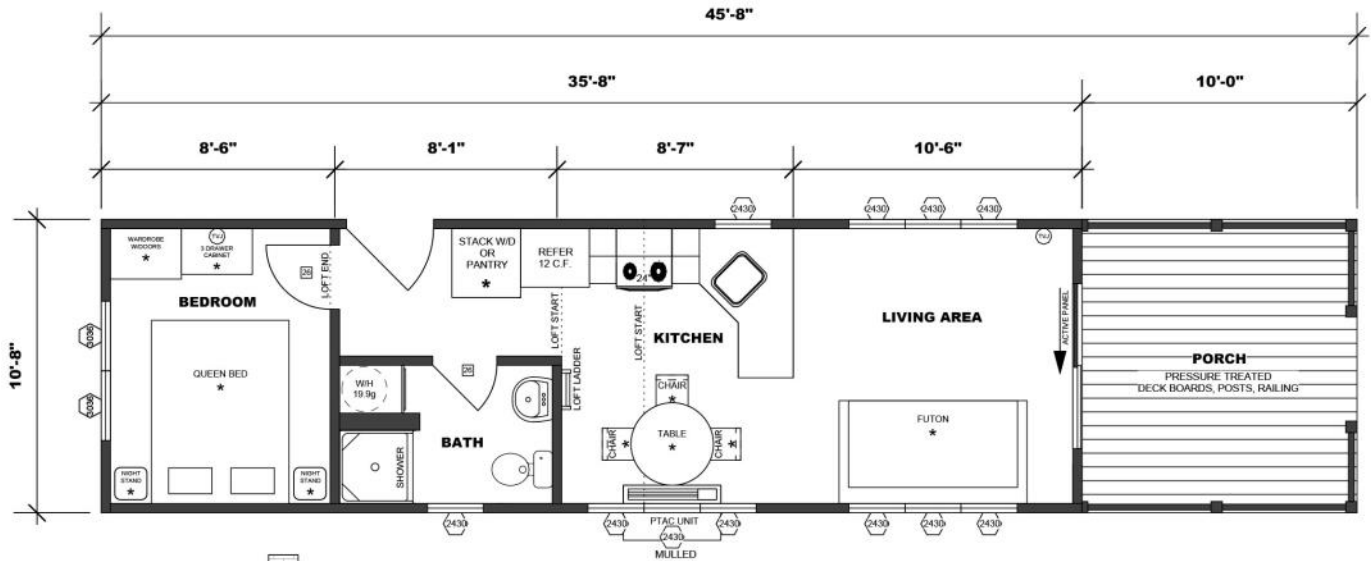


## NORTHWOOD LODGE CABIN

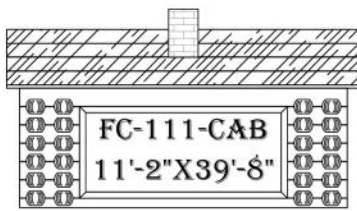
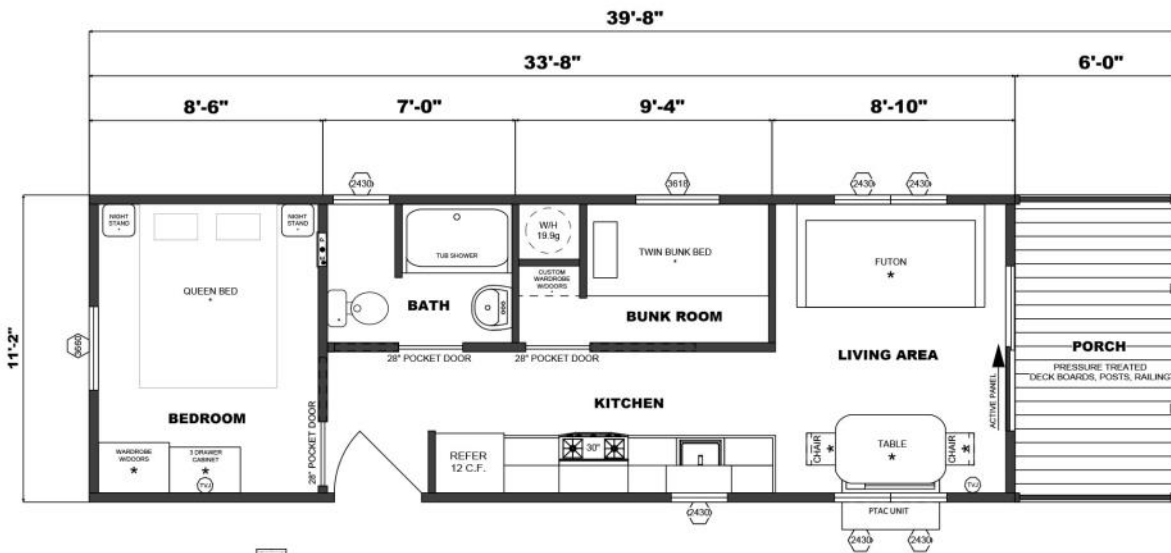


## NORTHWOOD LODGE CABIN W/CONTINUOUS LOFT ROOF

\*DENOTES OPTIONAL FURNITURE AND CABINETRY



## LAKEPORT VILLA CABIN W/LOFT & PORCH



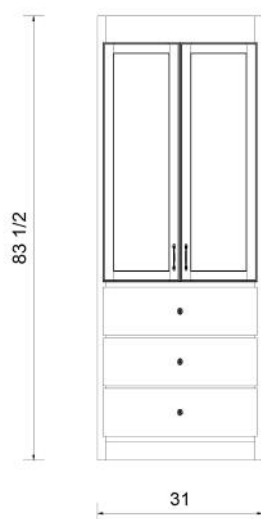
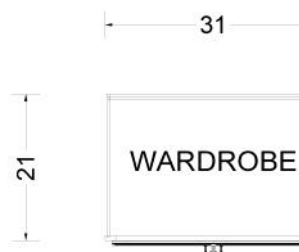
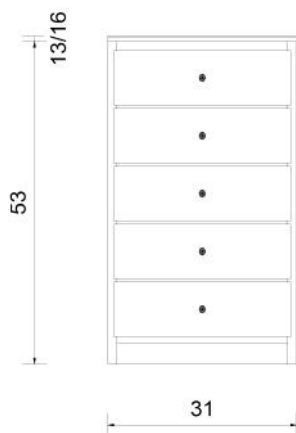
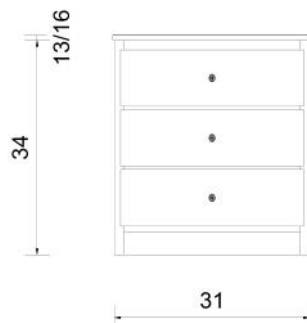
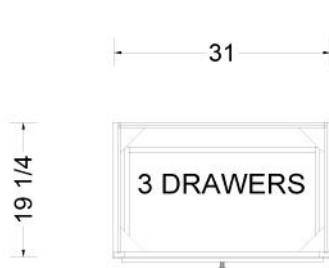
## MEADOWBROOK CABIN

\*DENOTES OPTIONAL FURNITURE AND CABINETRY





# OPTIONAL *CABINET FEATURES*



## This image shows a blank sheet of white paper with horizontal ruling lines. The lines are evenly spaced and run across the width of the page. There are no margins, text, or other markings on the paper.

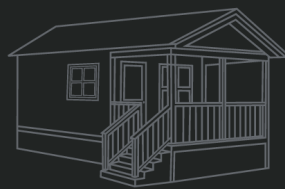


## Quality Craftsmanship in the Amish Tradition

# The escape of vacation in the comfort of home.

With a Park Model RV cabin from *Fork Creek*, you can have it all—time away with family and friends, easy access to your favorite outdoor activities and a comfortable space to relax and unwind. Durable, versatile and comfortable, a *Fork Creek* Park Model RV combines authentic craftsmanship with modern amenities like energy efficient appliances and functional design.

Founded in 2009 by the father-and-son team of Dan and Jonathan Allyger in Lancaster County, Pennsylvania, *Fork Creek* is a leading producer of premium Park Model RVs in the eastern United States. In 2015, seeking a partner with greater manufacturing and distribution resources and expertise, *Fork Creek* was acquired by Pleasant Valley Homes, Inc., the largest independent, family-owned maker of finest-quality manufactured homes and custom modular homes in the northeast United States. At Pleasant Valley, we own and operate every day with our exceptional team of designers, engineers and craftsmen and women. Our experience – and our founding principles of unsurpassed craftsmanship, trusted relationships, and unrivaled innovation – have served us well for over three decades, and we're confident that they will prove as valuable as they ever have as we continue the proud tradition of building your *Fork Creek* Park Model RV.



## FORK CREEK

Quality Craftsmanship in the Amish Tradition

[www.forkcreek.com](http://www.forkcreek.com)

570-345-6500 | 100 Hammersmith Drive P.O. Box 88 Pine Grove, PA 17963

All representations and descriptions of the product shown herein are believed to be accurate at the time of publication. Due to occasional updating of codes and Fork Creek's continual product improvement, specifications are subject to change without prior notification. Model availability and specifications are subject to change without notice. Fork Creek Park Model RV's are sold through independent, authorized dealers. Authorized dealers are independent business entities and are not agents of Pleasant Valley Homes, Inc. d/b/a Fork Creek.