



# The Every Student Succeeds Act: Implications for Equity in Illinois

June 14, 2016  
3:30-4:45pm Central

*a project of the:*



[partnersforeachandeverychild.org](http://partnersforeachandeverychild.org)



# The Every Student Succeeds Act: Implications for Equity in Illinois

---

## Moderator

June 14, 2016

- **Ralph Martire** - Executive Director, *Center for Tax and Budget Accountability*

## Presenters

- **Tony Smith** - State Superintendent, *Illinois State Board of Education*
- **Christopher Edley, Jr.** - President, *The Opportunity Institute*

## Panelists

- **Donna Harris-Aikens** - Director, Education Policy & Practice Department, *National Education Association*
- **Beth Antunez** - Deputy Director, Government Relations, *American Federation of Teachers*
- **Susie Saavedra** - Senior Director for Policy and Legislative Affairs, *National Urban League*
- **Sylvia Puente** - Executive Director, *Latino Policy Forum*
- **Claire Voorhees** - Director for K-12 Reform, *Foundation for Excellence in Education*
- **Leslie Finnan** - Senior Legislative Analyst, *American Association of School Administrators*



## Passage of ESSA:

---

- Represents **new opportunities for shaping education policy**
- Recasts the federal, state, and local **roles in ensuring educational equity.**
- Opportunities to participate in strengthening accountability.

**Input and support from a broad and politically inclusive set of stakeholders toward the development of state specific equity agendas/strategies is critical to the successful development, implementation, and ultimate sustainability of ESSA in the states.**



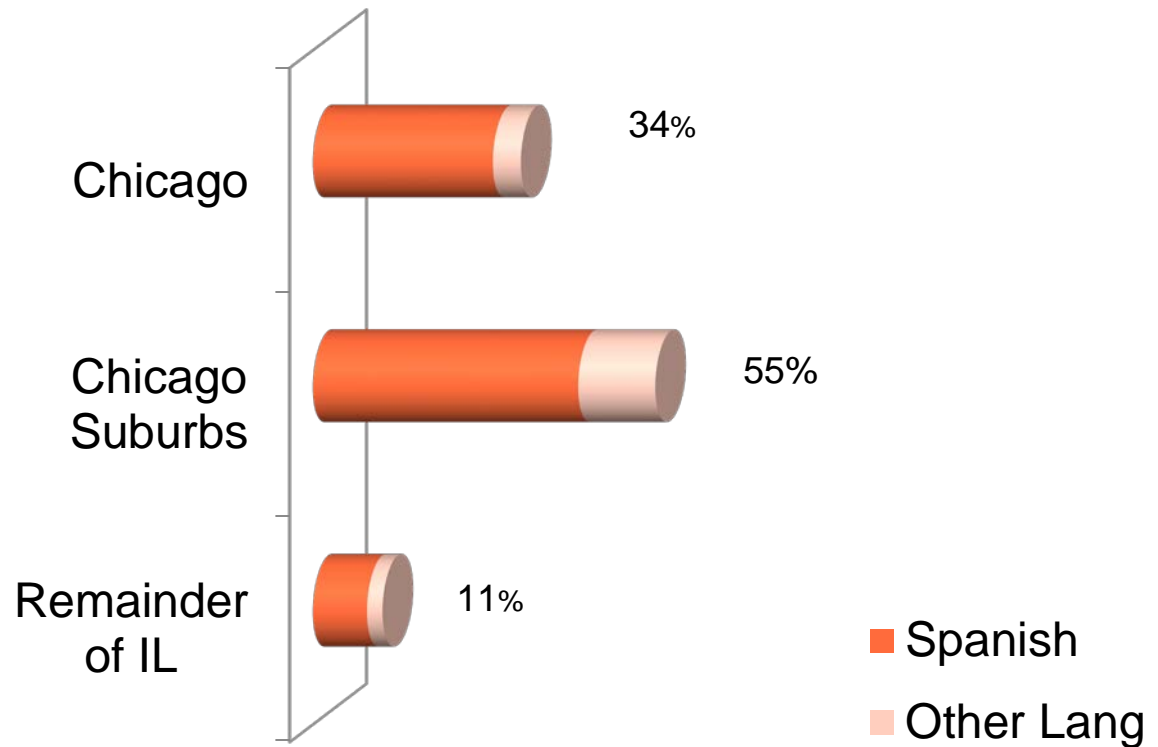
# 2012 ELLs in Illinois

**% of Illinois students who were ELL: 9.9%**

**% of ELL students who are Spanish-speaking: 81%**

**% of Chicago Public School students who were or are identified as ELL: 34%\***

**66% of ELL students are outside of Chicago**



**Analysis: Latino Policy Forum**

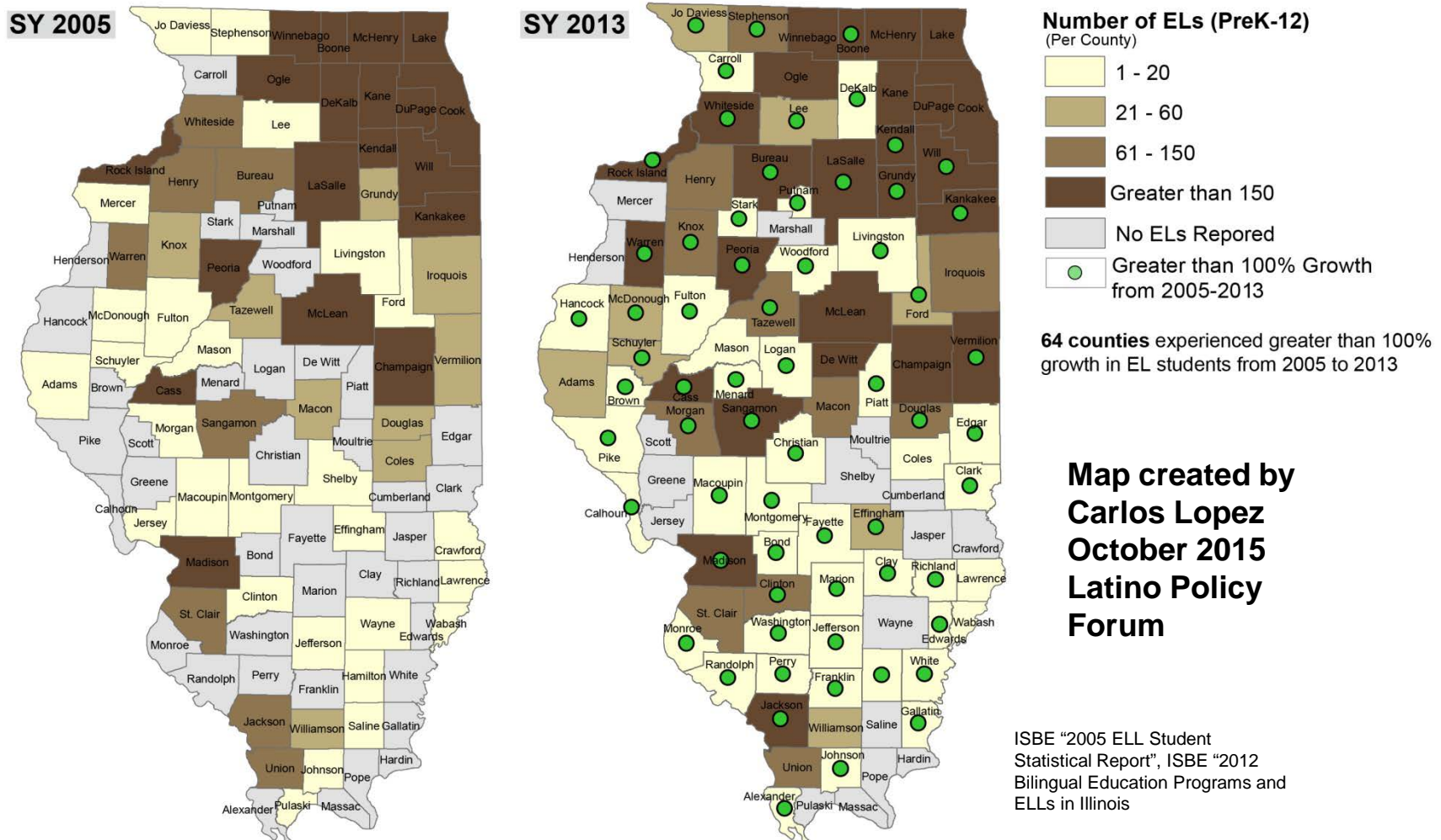
Sources: Illinois State Board of Education. *Bilingual Education Programs and English Language Learners in Illinois SY 2012 Statistical Report*. (2013). "Chicago suburbs" includes the collar counties of Cook, Kane, Lake, Dupage and Will. [http://www.isbe.state.il.us/research/pdfs/ell\\_program\\_stat\\_report10.pdf](http://www.isbe.state.il.us/research/pdfs/ell_program_stat_report10.pdf)

\*Gwynne, Julia, Amber Stitzel Pareja, Stacy B. Ehrlich, and Elaine Allensworth (2012) "What Matters for Staying on Track and Graduating in Chicago Public Schools: A Focus on English Language Learners."



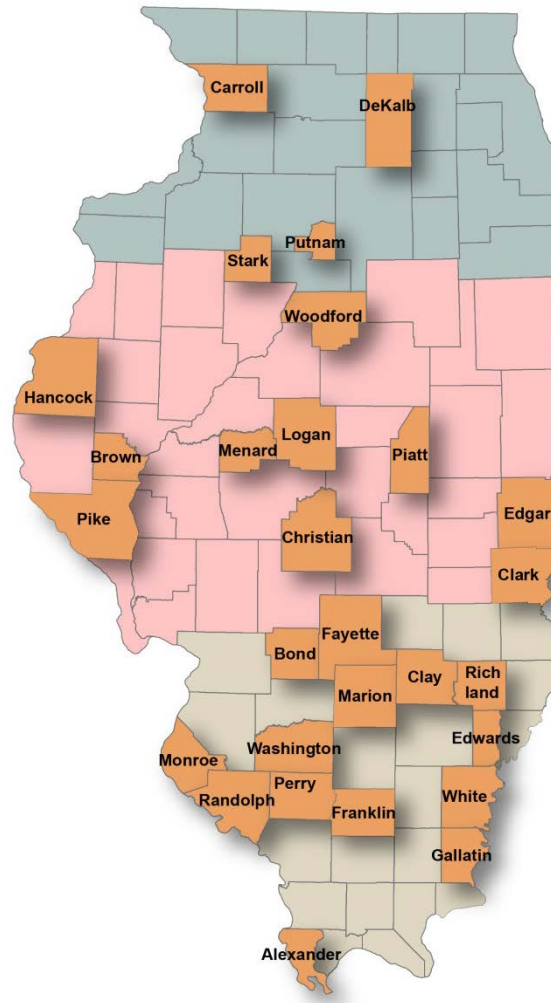
# English Learner Growth in Illinois

English Learners (ELs) PreK-12, School Year (SY) 2005 to 2013 per County





# Counties with New Presence of English Learners from 2005 to 2013



Counties with new presence of ELL students

Northern IL

Central IL

Southern IL

**26 counties** have a new presence of ELL students



---

# Thank you for participating!

*A recording of this webinar will be available soon at [partnersforeachandeverychild.org](http://partnersforeachandeverychild.org)*