

Community Owned Solar

Site Host Guide



REQUIREMENTS FOR GROUND-MOUNTED SOLAR ARRAYS

- The site must be relatively flat.
- The site must have unobstructed southern exposure.
- Brush must be cleared or able to be cleared.
- The road to the site must have consistent full access.
- An ideal site will also have few, or solar-supportive, neighbors and abutters.
- The site cannot be a designated wetland or violate any conservation regulations.
 - For a map of protected areas unfit for solar, visit maps.massgis.state.ma.us/dfg/biomap2.htm
(Note: Sites not marked on this map may still be protected by local conservation commissions.)

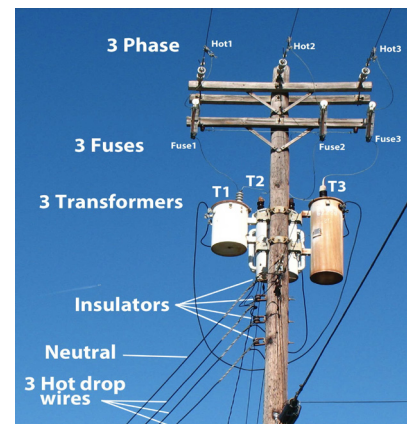
REQUIREMENTS FOR ROOFTOP SOLAR ARRAYS

Rooftop projects are simpler to permit than ground projects, but they require:

- Relatively new roofing material (no slate)
- Southern exposure
- Structural capacity
- 20-25 year lease commitment

POWER PHASE REQUIREMENT

Solar arrays larger than 25 kW must be within 500 feet of 3-Phase power service. As shown, 3-phase power can be identified by the three power lines and three transformers on electric poles.



PARCEL / TAX RESTRICTIONS

Current MA law allows only one solar array per tax parcel and prohibits subdivisions for the purpose of solar development. Sites with conservation restrictions are not eligible and sites participating in MA Chapter 61 (ag or forestry) will need to pay a change in use penalty.

LANDOWNER BENEFITS

For projects with 25-500 kW of solar capacity, landowners will receive an annual lease payment of \$500 - \$5,000 every year for 20 years.

After you've found a site, we'll do an initial site assessment. To request an assessment, please fill out our Landowner Form at cooppower.coop/css-interest

Solar Site Guide

| Array Size (kW AC) | Mount | Space Required | Example Site | Power Line Access | Distance to Power Line | Households Served | Relative Cost to Customer | Development Timeline |
|--------------------|--------|---|------------------------|--------------------|------------------------|-------------------|---------------------------|----------------------|
| 25 | Ground | 4,000 ft ² ~ Basketball Court | Large backyard | 1-phase or 3-phase | <300 ft | 4-6 | Standard | 2 - 3 months |
| | Roof | 3,000 ft ² ~ Tennis Court | Church, small business | 1-phase or 3-phase | <300 ft | 4-6 | Standard | 2 - 3 months |
| 100 - 250 | Ground | 1/3 - 1 acre ~ Football Field = 1 acre | Old hay field | 3-phase | <500 ft | 20-50 | Affordable | 4 - 6 months |
| | Roof | 1/3 - 1 acre ~ Football Field = 1 acre | Warehouse | 3-phase | <500 ft | 20-50 | Affordable | 4 - 6 months |
| 200 - 250 | Canopy | 1 - 1.5 acres ~ Football Field = 1 acre | Large parking lot | 3-phase | <500 ft | 40-50 | Expensive | 9 - 12 months |
| | Ground | 3 - 4 acres ~ Football Field = 1 acre | Old hay field | 3-phase | <500 ft | 160-200 | Very Affordable | 9 - 12 months |
| 800 - 1,000 | Roof | 3 - 4 acres ~ Football Field = 1 acre | Large flat roof | 3-phase | <500 ft | 160-200 | Very Affordable | 9 - 12 months |