

INSTALLATION MANUAL



MADE IN CANADA

DISCLAIMER

GreenLane Accessories is a division of Western Edison Manufacturing Corp. All of our products are designed for off-road use. Modify your vehicle at your own risk. By choosing to use our products you take full responsibility and liability for any resulting damages to persons or property. Designs are subject to change without notice. Your safety, and the safety of others is very important. CARELESS INSTALLATION AND OPERATION CAN RESULT IN SERIOUS INJURY OR EQUIPMENT DAMAGE. READ AND UNDERSTAND ALL SAFETY PRECAUTIONS AND OPERATING INSTRUCTIONS BEFORE INSTALLING AND OPERATING THIS PRODUCT.

PROPRIETARY AND CONFIDENTIAL

THE INFORMATION CONTAINED IN THIS DRAWING IS THE SOLE PROPERTY OF WESTERN EDISON MANUFACTURING CORP. ANY REPRODUCTION IN PART OR AS A WHOLE WITHOUT THE WRITTEN PERMISSION OF WESTERN EDISON MANUFACTURING CORP IS PROHIBITED.

DESCRIPTION:

5th GEN 4RUNNER STUMP BUMPER

COMPATIBLE WITH:

**2014+ TOYOTA 4RUNNER
(TRD PRO, TRAIL, SR5, OFFROAD)**

DATE UPDATED:

JULY 2021



4RUNNER STUMP FRONT BUMPER INSTALLATION GUIDE

APPLICATION: 2014+ TOYOTA 4RUNNER

PARTS LIST	
STUMP BUMPER	1
DRIVER & PASSENGER SIDE FRAME TIE IN BRACKETS	2 (1 ea. L & R)
BUMPER SUPPORT BRACKETS	2
M12 BOLT	2
M12 WASHER	2
3/8 X 4" BOLT	2
3/8 X 1-1/4" BOLT	2
3/8 NYLOCK NUT	4
3/8 WASHER	8
M10 WASHER	8
5/16" X 0.875" OD FLAT WASHER	8
5/16-18 X 1-1/4" BOLT	4
5/16-18 NYLOCK NUT	2
5-16" X 1.25" FENDER WASHER	2

TOOLS REQUIRED
STANDARD / METRIC SOCKETS AND WRENCHES
FLAT HEAD SCREWDRIVER
ROTARY CUT OFF SAW FOR BUMPER TRIMMING
SANDER/DREMEL
MASKING TAPE & SHARPIE

TORQUE SPECS		
THREAD SIZE	HEX BOLT HEAD	TORQUE
6mm	10mm	8 ft/lb
8mm	12 or 13 mm	18 ft/lb
10mm	17mm	23 ft/lb
12mm	19mm	50 ft/lb
14mm	22mm	90 ft/lb
1/4 in	7/16 in	12 ft/lb
5/16 in	1/2 in	19 ft/lb
3/8 in	9/16 in	23 ft/lb
1/2 in	3/4 in	90 ft/lb

Removing stock parts:

1. Draw a line on the bumper to cut along in [Step 3](#).
 - a. Some models (TRD) have an extra plastic cover over the bumper – trace around the cover to get the cut line.



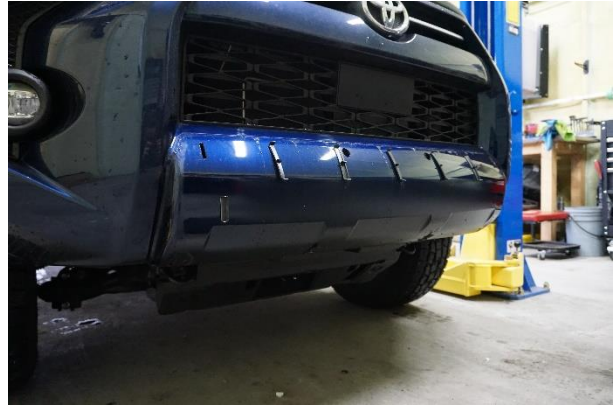
- b. On other models without the bumper cover, the line will be 1" down from top bumper edge – use 1" masking tape and draw line along bottom edge to get cut line.



2. On TRD models with extra plastic cover – reach under bumper and pull hard from bottom to remove. This piece will *not* be reused.



BEFORE

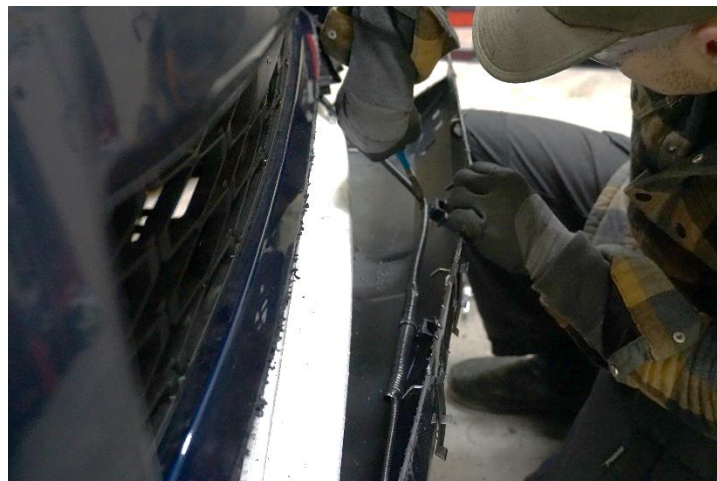


AFTER

3. Use angle grinder to cut bumper, leaving a generous amount of material from the drawn line as shown below. These edges will be cleaned up in [Step 10](#).



4. Some models have the fog light wire attached to inside of bumper which will need to be removed by cutting the zip ties. This will be reattached in [Step 12](#).



5. Remove the Styrofoam piece – this will *not* be reused.



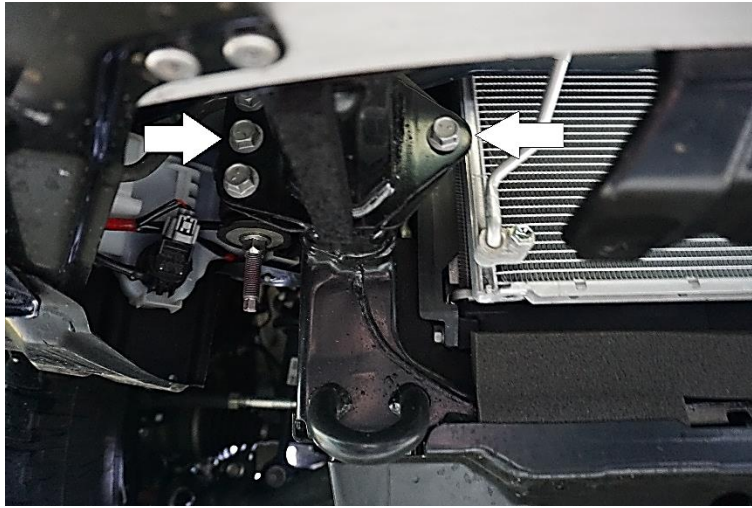
6. Remove the 6 nuts through the front holes in crashbar using a 14mm socket.



7. Remove lower plastic cover between skid plate and bumper using a 10mm socket. The cover and bolts will *not* be reused.



8. Remove aluminum crash bar by removing bolts behind with 14mm socket. These factory bolts *will be reused* in Step 15. The crash bar will *not* be reused.



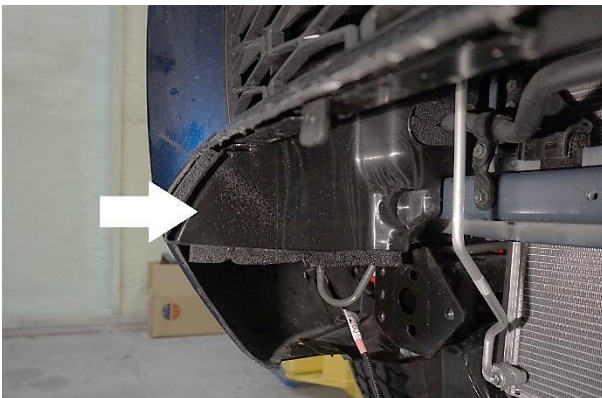
9. Trim off radiator shrouds and 2 tabs on front edge to create clearance for bumper.



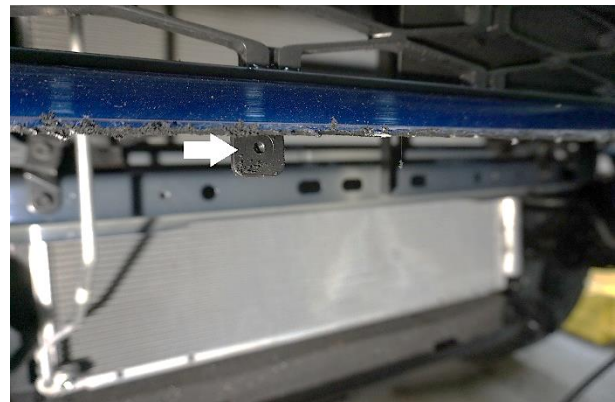
CUT LINE FOR DRIVER SIDE



DRIVER SIDE



PASSENGER SIDE



1 OF THE FRONT TABS

Installing Greenlane Bumper:

10. Clean cut edge with an orbital sander with 120 grit paper or similar.



11. Apply edge seal on the top edge that was cut.



12. Use zip ties to secure the fog light wire in place and out of the way.



13. Before installing the bumper, and the winch and/or lightbar on the bumper if applicable, do a test fit of the bumper on the vehicle without bolts. Make any necessary adjustments to cut.



14. After confirming fit, install winch and/or light bar onto Greenlane bumper by following those manufacturers instructions.

15. Add supplied washers and put never-seize or Loctite on the factory bolts (from crashbar removal in [Step 8](#)). Loosely install the Greenlane bumper to frame rail. Adjust the bumper left or right as needed to center it before tightening factory bolts to recommended torque specification.



Installing additional Greenlane parts:

16. Remove the bottom sticker covering the bolt holes for the frame tie in brackets.



17. Install Driver & Passenger side frame tie in brackets using supplied fasteners. Fasteners should be installed loosely initially and then tightened after bracket is aligned in place.



PASSENGER SIDE (L) & DRIVER SIDE (R) AS SHOWN



PASSENGER SIDE BRACKET



DRIVER SIDE INSTALLED

18. Install Bumper Support Bracket with supplied bolts into the threaded hole on the bottom of the bumper and edge of plastic bumper.



INSTALLATION COMPLETE