



portable
intelligence inc.



RF Plus Barcoding Software and Warehouse Best Practices



DRIVING INDUSTRY *FORWARD*

MEET OUR SPEAKERS



Josh Sugar
VP Business Development
Portable Intelligence



Jeff Lem
President
Portable Intelligence



Paul Tedford
Director, Business Solutions
Synergy Resources



Chris Garrido
Account Manager
Synergy Resources



UPCOMING EVENTS

- October 3rd – 2016 New England Supply Chain Conference & Exhibition
- October 16th-18th – Synergy User Conference Canada
- <http://www.synergyresources.net/calendar>

ABOUT OUR COMPANY



Portable Intelligence has successfully deployed its WMS solution to nearly 70 VISUAL Manufacturing customers.

With over 25 years of Supply Chain experience, Portable Intelligence is a subject matter expert with it comes to improving warehouse performance.

“ Brandt Meats has been using Portable Intelligence’s WMS for over 7 years to keep track of our inventory. We use the real-time data it provides to deliver superior customer experience to our customers, which is paramount in our industry. And on the rare occasion that we have needed support, the Pi team has been very helpful. We look forward to a strong partnership for years to come



Operations Manager, Brandt Meats, Mississauga Ontario





OBJECTIVES FOR TODAY'S SESSION

We will introduce RF Plus for Visual – a barcoding software solution that provides real-time inventory tracking.

We want to share some top 10 warehouse best practices that will help you turn your warehouse into a competitive advantage. They're not difficult, but need a bit of time & attention on your part.

Our goal today is to give you some practical take home value that you can implement immediately.

RF Plus



Our warehouse management system allows for wireless, real-time inventory tracking from the receipt of purchased goods at the dock doors, to issuing raw materials, transfers in the warehouse and back to the dock doors for shipping in one configurable package.

Inbound Module

Standard Features

- Receiving materials against a P.O.
- Identifying Inspection Required flag for QC Quarantine
- Real time printing of P.O. material labels
- Receiving to a staging location
- Put away of raw materials into warehouse location (2 stg)
- Overwrite Staging Location
- Adjust-off before Finish Receiving

WIP Module

Standard Features

- Issue Raw material to work order
- Add Requirements
- Suggested locations (FIFO, Low to High or High to Low)
- Issue Return
- Finished goods receiving 1 stage
- Receive to inventory location (Primary)
- Print Generic FG Labels
- Finished goods receiving 2 stage
- Receiving to staging location
- Put away of finished goods
- Receive co-Product Orders

Outbound Module

Standard Features

- Picking against Customer Order
- Shipping against Customer Order
- Suggested locations (FIFO, Low to High or High to Low)
- Order Adjustments
- Order Scheduling and Prioritization
- Printing Packing slip
- Close order confirmation from Control Center
- Two Stage Shipping (Picking & Shipping)
- Picking to staging location
- Printing Shipping labels
- Pick by Delivery Schedule Lines
- Gang Picking
- Batch picking (multiple orders)
- Scheduling orders to specific user
- Auto-schedule picking by date range
- Pick and ship full licenses
- Freight cost entry

Inventory Module

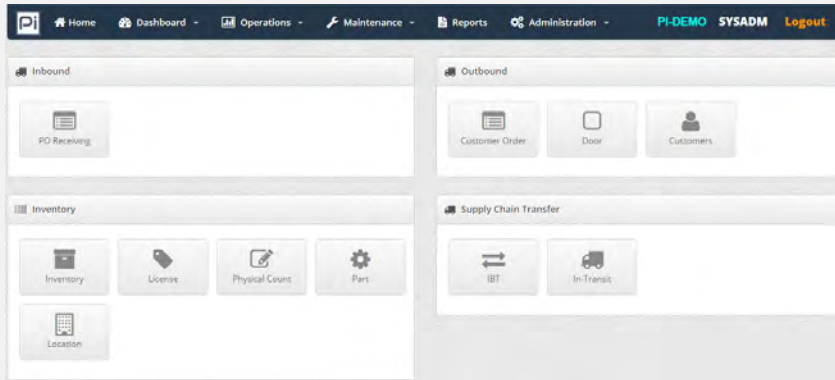
Standard Features

- Support lot trace, Serial, and non-trace
- Inventory count (update Visual Tags)
- Inventory Transfers
- Inventory Locator (by part / Location)
- Warehouse Transfers
- Cycle Count

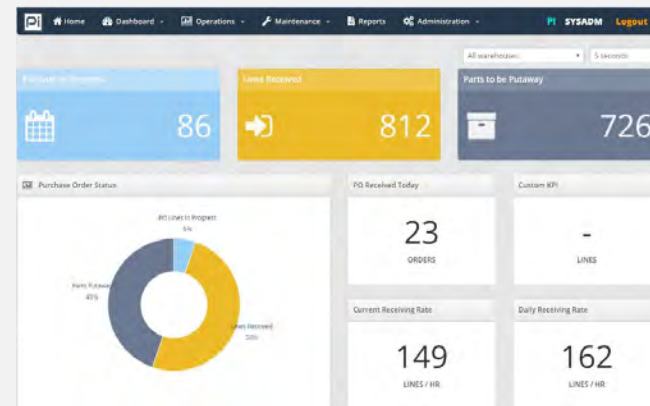


RF Plus – Control Centre

Home Screen



KPI dashboard



KPs available for:

- Inbound (shown above)
- WIP
- Outbound
- Inventory



RF Plus Key Benefits - Tangible

- Lot reservation
- Shipping process streamline
- Pick process improvement – wave picking
- Multiple QC Quarantine
- Inventory lookup and lot trace on hand held scanners
- Reduction travel time of workers
 - (looking for inventory)



RF Plus Key Benefits – Intangible (yet critical)

- Traceability
- Tight integration to Visual ie: one database
 - (less system risk)
- Off the shelf system – not building everything
- Employee satisfaction
- Best practices built into the system
- Sustainable and scaleable
 - warehouse can grow with the business



Summary RF Plus Road Map 2016

Accomplished:

- June – Multiple QC location support
- July- Directed Picking and Smart Replenishment
- July- RF Plus 6.1 release, currently shipping 6.0
- Sept– Labour Productivity / KPI metrics

Future:

- Oct - HTML5 web based screens to run on Windows 10
- Nov– Support for Visual 8.1 (subject to Infor releasing as per plan)
- Dec– Multi-media support (camera, video)



RF Plus Features vs. Traditional VISUAL Barcoding

- On Demand Labels
- Info – Look up info / inventory real-time on wireless hand held scanner
- Pick Pack and Ship
- Advanced (directed) Picking
- Put away
- License Plating
- WIP Inventory Tracking
- Finished Goods label support
- Can Handle multiple quarantine locations
- KPI Dashboards and drill down metrics



TOP 10 WAREHOUSE BEST PRACTICES



CURRENT STATE OF THE WAREHOUSE

For most manufacturers, the warehouse is an afterthought; most companies' primary purpose is to build & create.

As such the warehouse is seen as serving the manufacturing process and at a cost to be minimized. Not seen as an entity that can improve the business' competitive position.

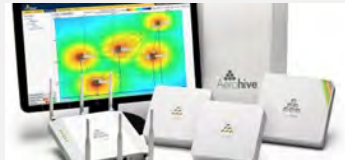
As a result, lots of home grown inefficient processes; few real KPIs and metrics that reflect the goals of the business.





#1 – ASSET PERFORMANCE

- Material Handling Equipment (MHE)
- Racking, Dock areas
- Barcode Printers and Scanners
- Wireless Network





#2 – CERTIFICATION & TRAINING

- Certifications & refresher courses for your staff
- Professional training
- Safety training (OHSA, WHMIS, First Aid)
- Emergency Evacuation

Make Safety Training and Refresher Courses Mandatory

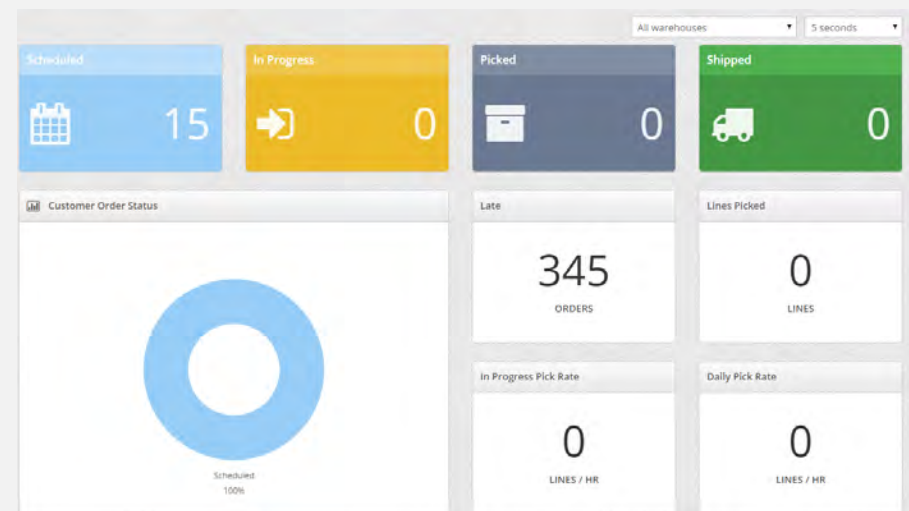
Have you demonstrated to your employees that you're making efforts to provide a safe work environment, as well as investing in their career



#3 – KEY PERFORMANCE INDICATORS

Start gathering KPIs that matter, such as:

1. Warehouse Productivity
2. Storage Space Utilization
3. Service Levels
4. Equipment Utilization
5. Labor Ratios



KPIs only matter if they're tied to published goals



#3 – KPI – most common used

Measure	% of Usage
On-time shipment to customer	85.80%
Order picking accuracy	73.20%
Warehouse capacity utilization	70.40%
Employee turnover	60.20%
On-time ready to ship	58.80%
Peak warehouse capacity used	58.70%
Fill rate (at order line level)	57.70%
Dock to stock cycle time	56.20%
Inventory accuracy by location	53.00%
Order fill rate	50.70%

#4 – REVIEW RECEIVING PROCESS



- Schedule your receiving and doors
- Is inspection and OSD reporting done adequately
- Can suppliers label with your part numbers?
- Review RMA process
- Review cycle time (dock-to-stock)





#5 – CYCLE COUNTS

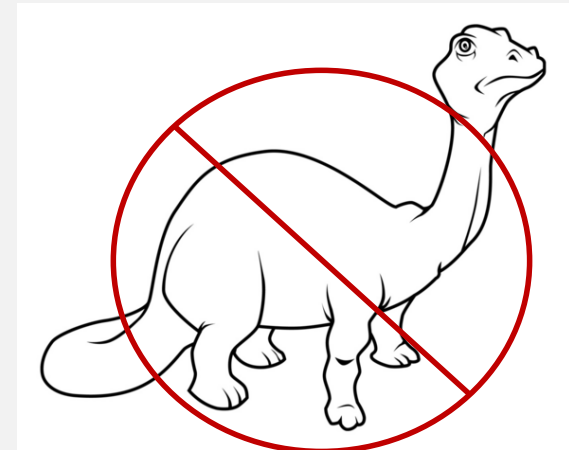
- Differences between Cycle Count & Physical Count
- Why Cycle Counts Matter?
 - Objective of min. 97% accuracy
- Identify your ABCs
- Timing of Cycle Counts

Follow your turns! If product turns every month, then it should be counted every month before purchase replenishment occurs



#6 – OBSOLETE INVENTORY

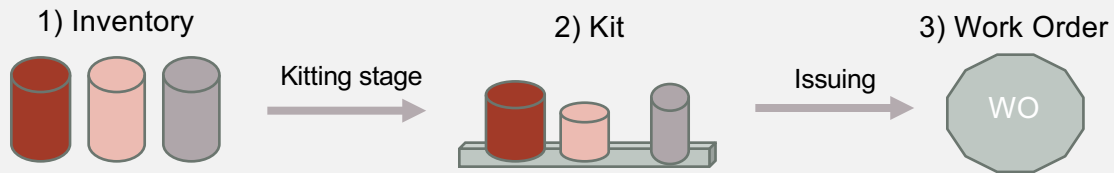
- Inventory is typically the biggest asset on the books
 - Carrying costs of inventory as much as 20%
- Identify obsolete inventory
 - Run FSN Analysis
- Minimize carrying costs and obsolescence
- Maximize space utilization





#7 – ISSUING PROCESS

- Re-label 'master' after issue
- FIFO picking/issuing to ensure proper turns
- Pick to 'kit' to be issued at one time to WO



Issues:

- FIFO
- Re-labelling

Issues:

- Identified location
- Labels

Issues:

- Visibility
- Unused portion
eeee returned to stock



#8 – PICK & SHIPPING

Issues:

- Variability in productivity
- Variability in pallet build quality/quantity
- Variability in process
- Honeycombing
- Bottleneck in packing/shipping

Best Practices

- Utilize location system
- Directed picking and pallet build training
- Consider advanced picking techniques
- Generate shipping documents automatically



Wasted Space in the Warehouse



#9 – REPLENISHMENT

- How does replen happen currently?
- Replen strategy tied to UOM?
- Create areas in your WH that contain the relevant UOM



New distribution models have led to smaller order sizes; product should be presented to pickers in those UOM.

May require creating new processes!

Packaging & replen strategies should be tied specifically to optimizing picking.



#10 – YOUR DATA

- What inventory data is important to you?
 - Are you made to order vs. made to stock
- Is the data accurate?
 - Both in quantity & location
- Is the data timely?
- Is it the RIGHT data
- Single source of truth?

Should be easily shareable within your supply chain





RF Plus 60-day deployment model

30 DAYS

- Project kick-off
- BRD completion
- Functional Spec completion
- RF Plus configuration
- Deployment of Off the Shelf system
- Write use cases
- Process Verification

- *If necessary, we involve outside contractors to facilitate / support the implementation*

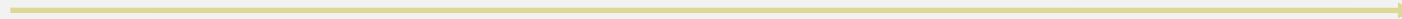
60 DAYS

- Setup training plan
- Training of Users
- UAT in test environment
- Deploy to live environment
- Go-Live

- *Deployment of customizations (if any are dealt with outside of the 60 day window)*

Kickoff

60 days



Limited Time RF Plus Incentive Offer



Attendees of the webinar that buy RF Plus within 60 days of the Webinar (Nov 15th) will have their choice of the two following incentives:

- Incentive Option # 1
- Will receive their Business Review Documentation (up to a \$3,500 value) at no charge.

- Incentive Option #2
- Will receive one wireless Intermec CK3 handheld computer/scanners (a \$2,500 value) at no charge (Doesn't include accessories or service contract.)