

LOCKPORT CROSSINGS

LOCKPORT
CROSSINGS

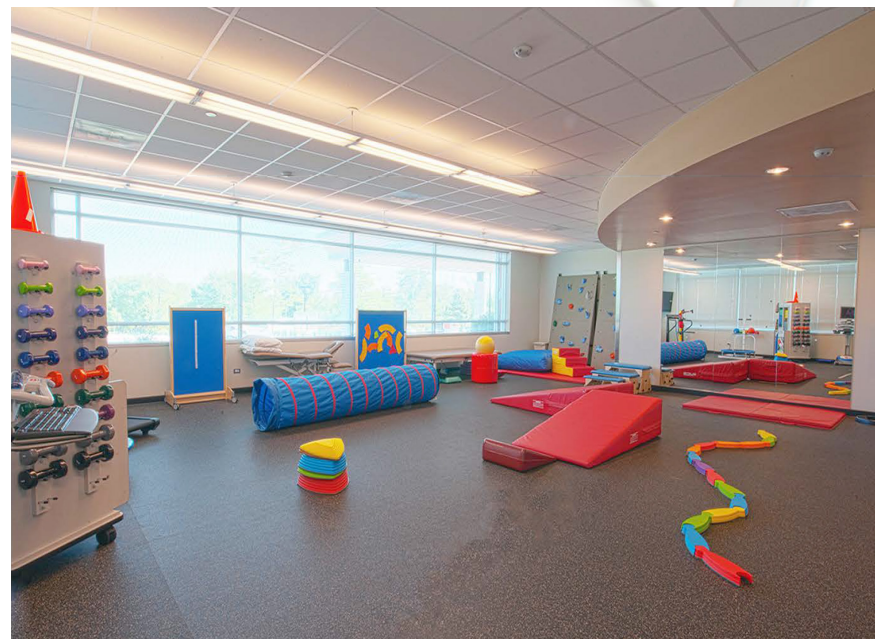
1206 E. 9TH ST
LOCKPORT, IL

BUILDING HIGHLIGHTS

Lockport Crossings Medical Center is a 52,000 square foot class A medical office building

Located in Lockport, a southwest suburb of Chicago

The property is midway between the I-355 interchange and downtown Lockport



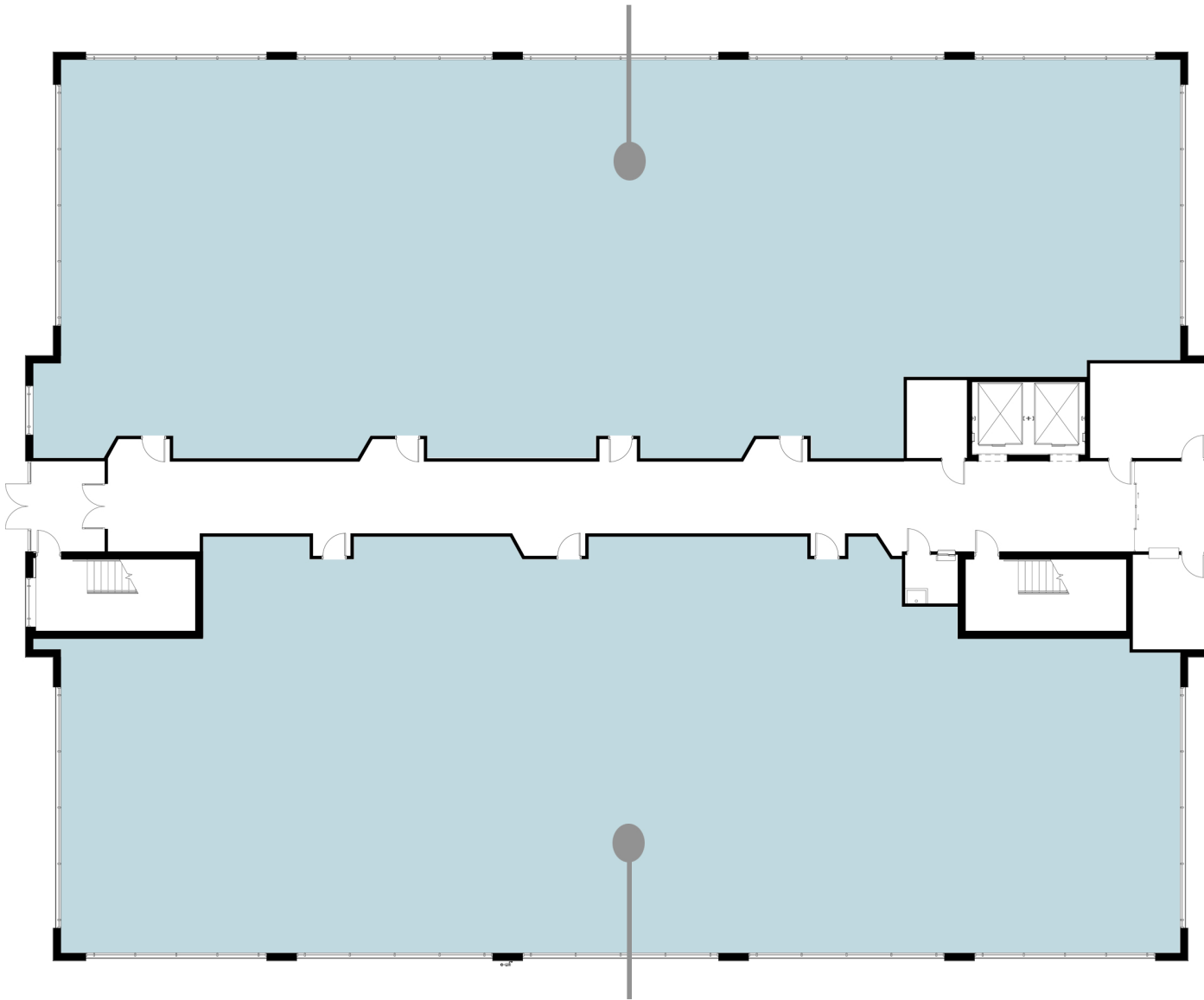
FOR
LEASING INFORMATION
PLEASE CONTACT:

PAUL KOPECKI

847-897-7305

pkopecki@medpropertiesgroup.com

VACANT - 7,985 RSF
SUITE 160



VACANT - 8,006 RSF
SUITE 110



VACANCIES
FIRST FLOOR

LOCKPORT CROSSINGS

1206 E. 9TH ST
LOCKPORT, IL



FOR
LEASING INFORMATION
PLEASE CONTACT:

PAUL KOPECKI

847-897-7305

pkopecki@medpropertiesgroup.com

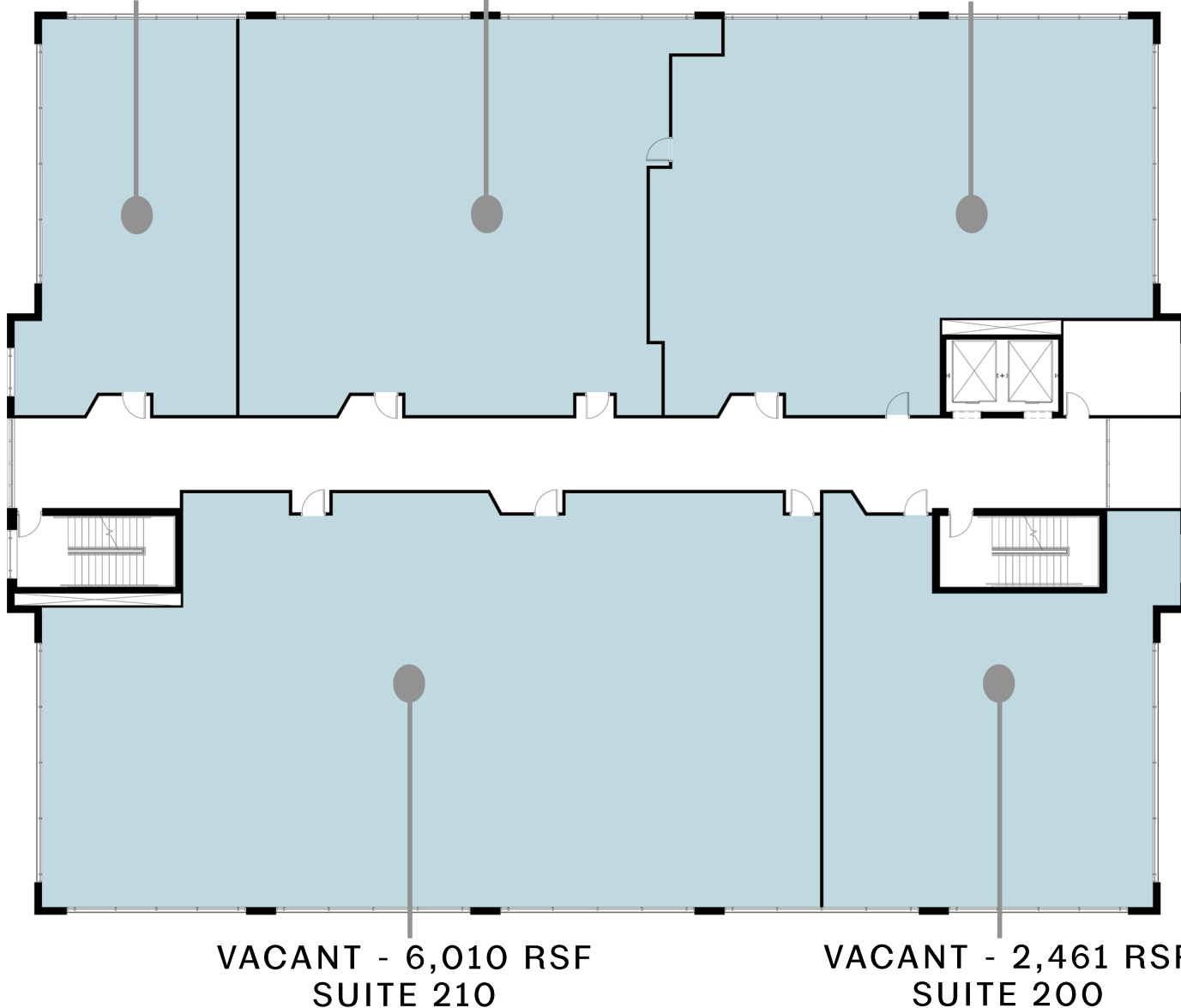


MedProperties

VACANT
1,621 RSF
SUITE 290

VACANT
4,773 RSF
SUITE 270

VACANT
3,292 RSF
SUITE 250



VACANCIES
SECOND FLOOR

LOCKPORT CROSSINGS

1206 E. 9TH ST
LOCKPORT, IL



FOR
LEASING INFORMATION
PLEASE CONTACT:

PAUL KOPECKI

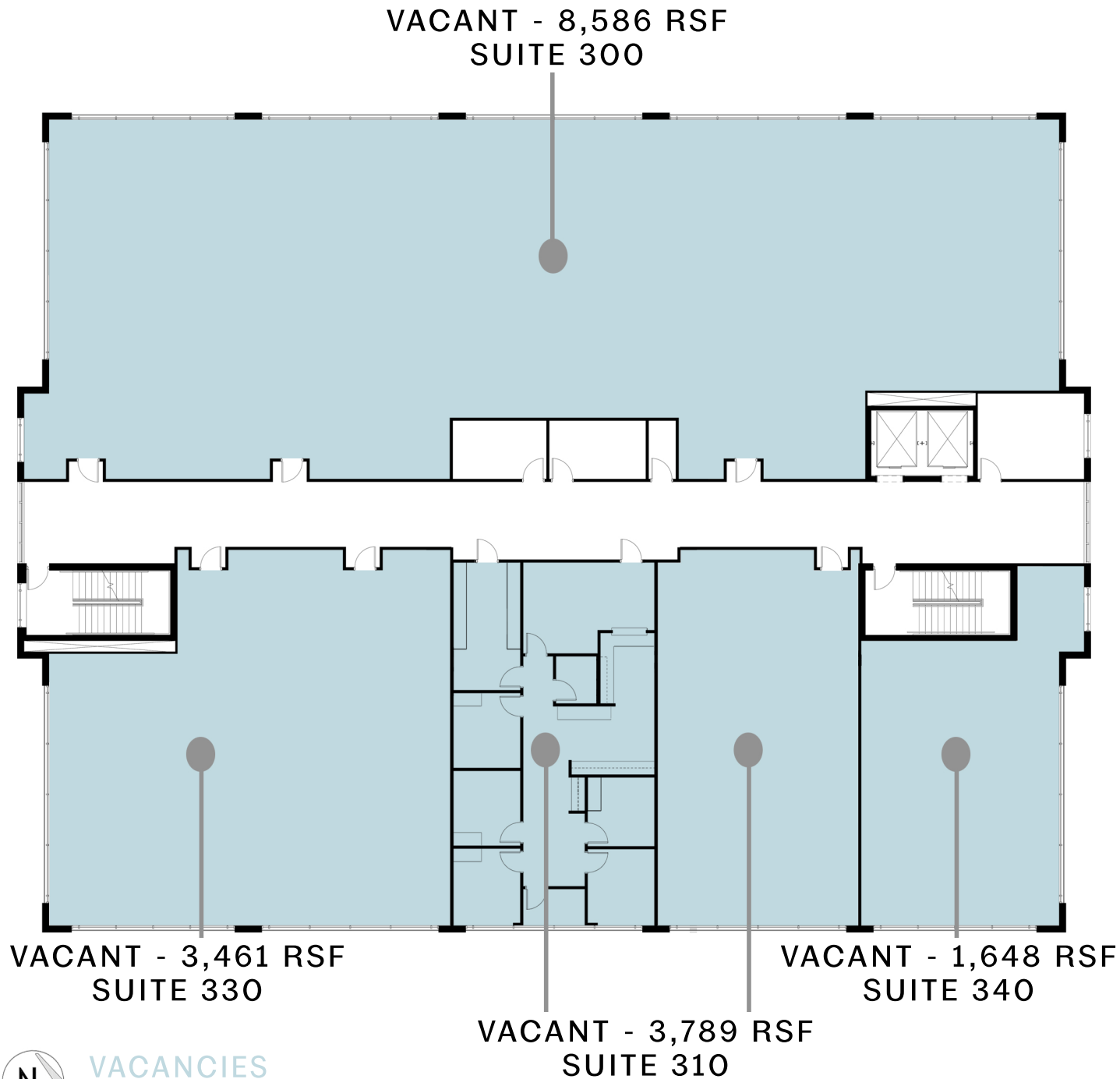
847-897-7305

pkopecki@medpropertiesgroup.com



LOCKPORT CROSSINGS

1206 E. 9TH ST
LOCKPORT, IL



 VACANCIES
THIRD FLOOR

FOR
LEASING INFORMATION
PLEASE CONTACT:

PAUL KOPECKI
847-897-7305
pkopecki@medpropertiesgroup.com


MedProperties