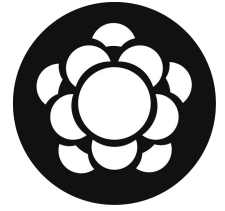


MengQiMusic

Seashore

Manual

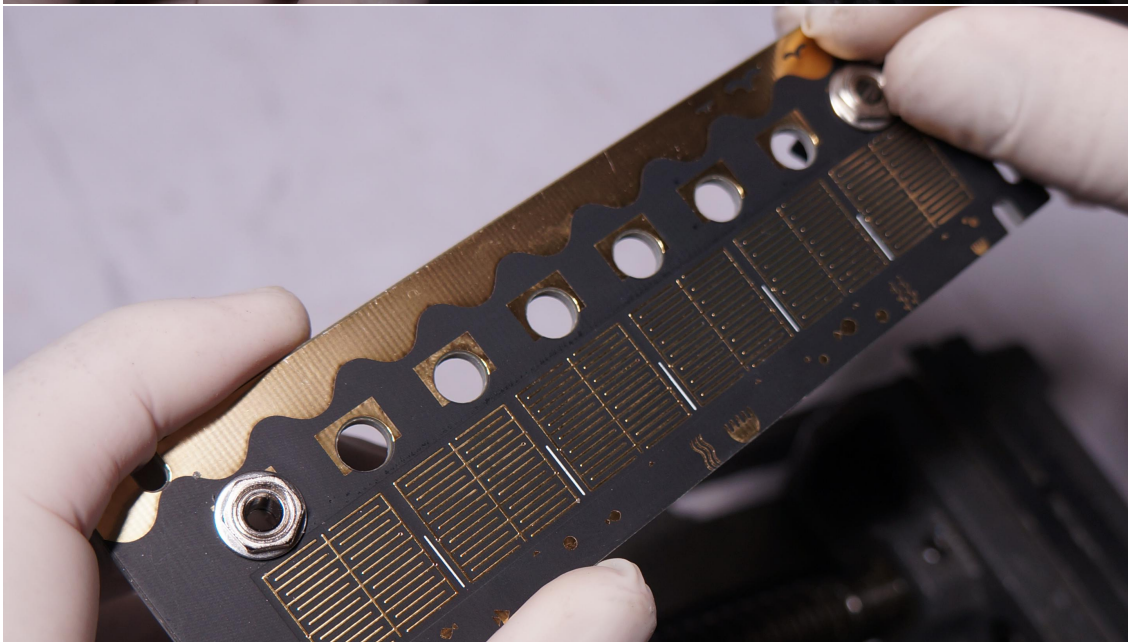
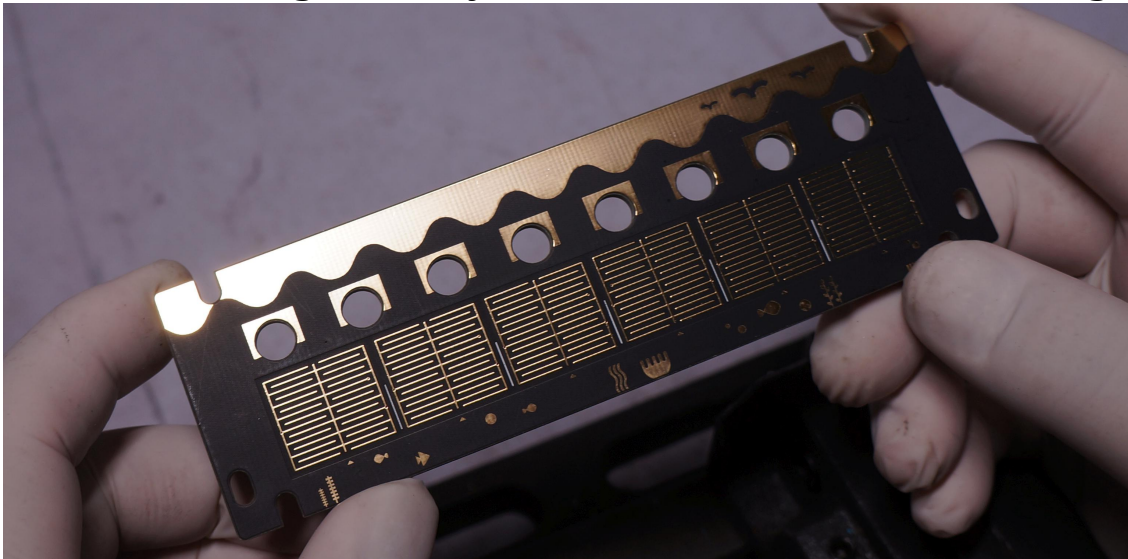


Seashore pads support finger tilting (inspired by [HYVE](#)). The use of XactFSR and silicon pads ensures clean signal routes and sensitiveness.

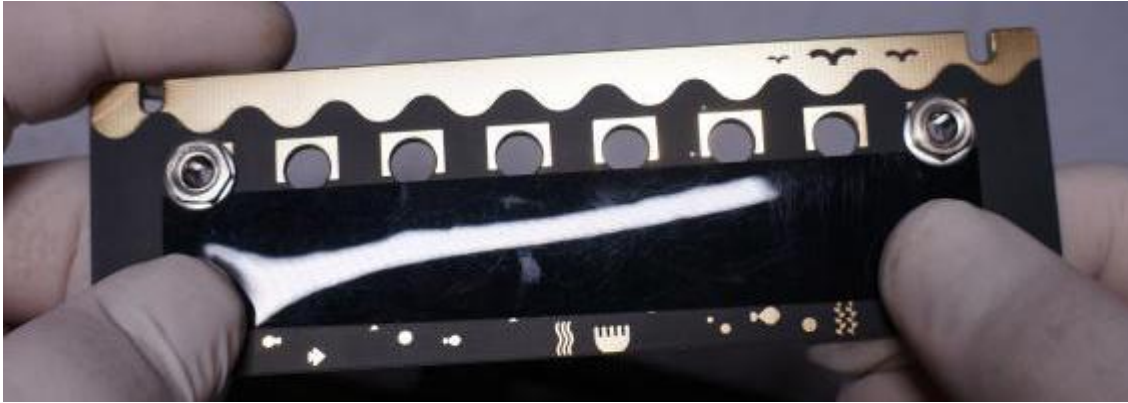
middle 6 jacks goes to the center of each pad, left/rightmost jacks are connected to them with pressure on the pads. Passive design results in bidirectional routes, thus you can use Seashore as 2 in 6 out or 6 in 2 out signal router.

Assembling Guide :

1. install left/rightmost jacks with washers, but don't tighten



2. slide the XactFSR sheet with glossy side up, underneath the washers



3. tighten the nuts and install all jacks, make sure they align with silkscreen



4. put solder bulbs onto pads

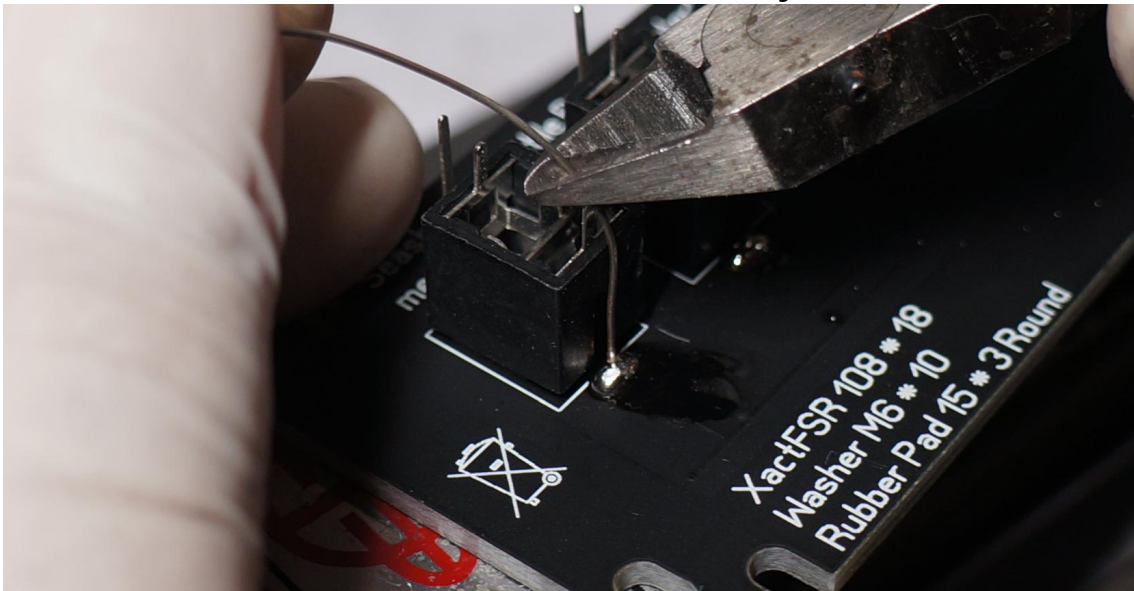




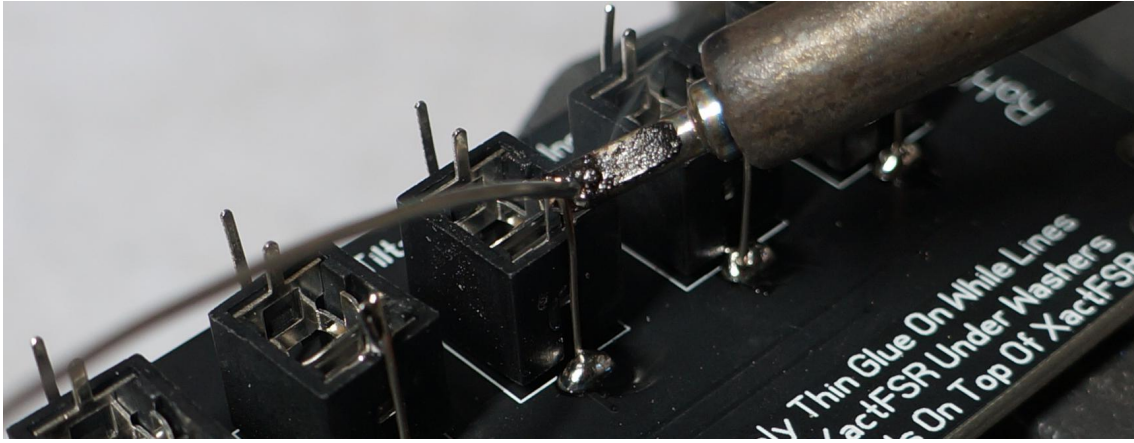
5. solder bare wire to the pad



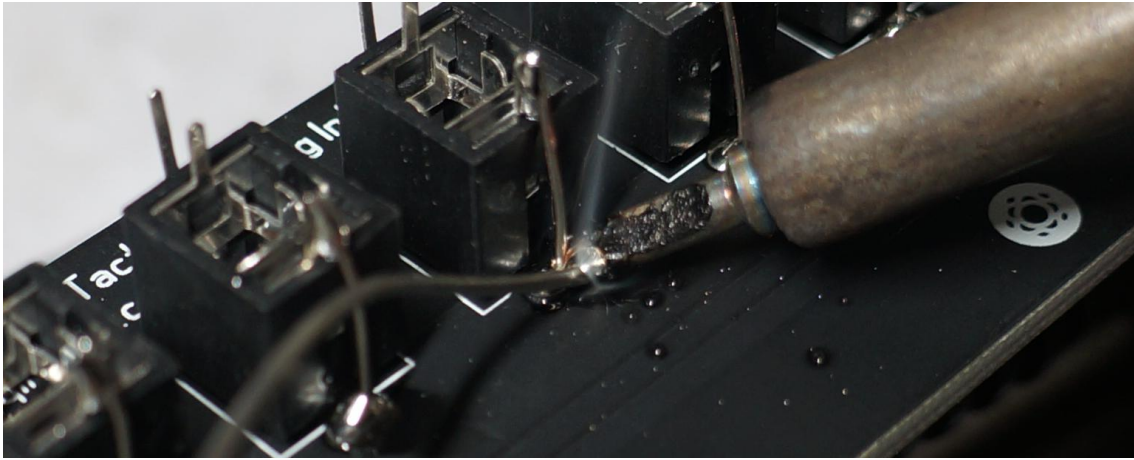
6. cut the wire and do the same for all jacks



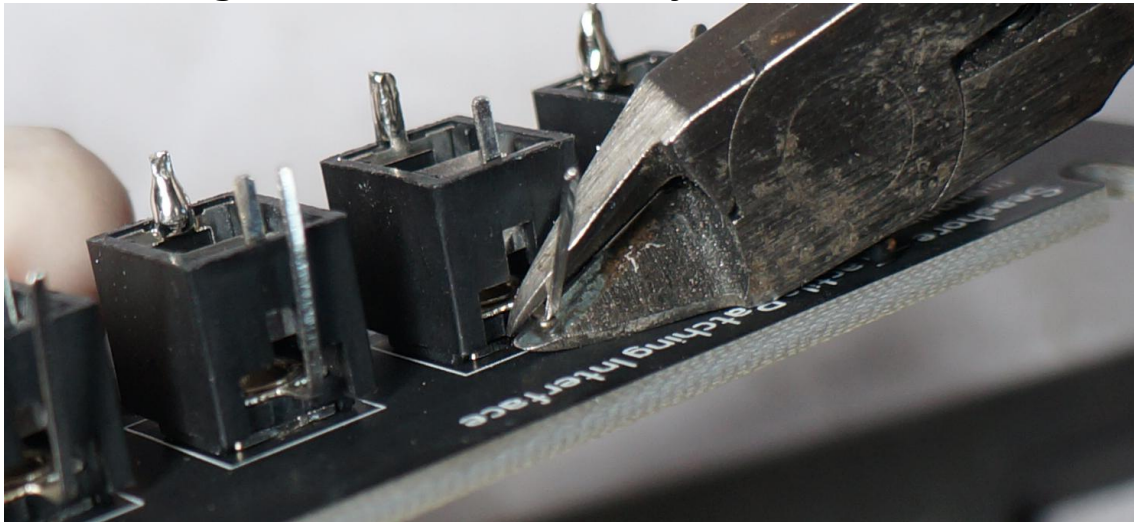
7. solder the wire to the jacks



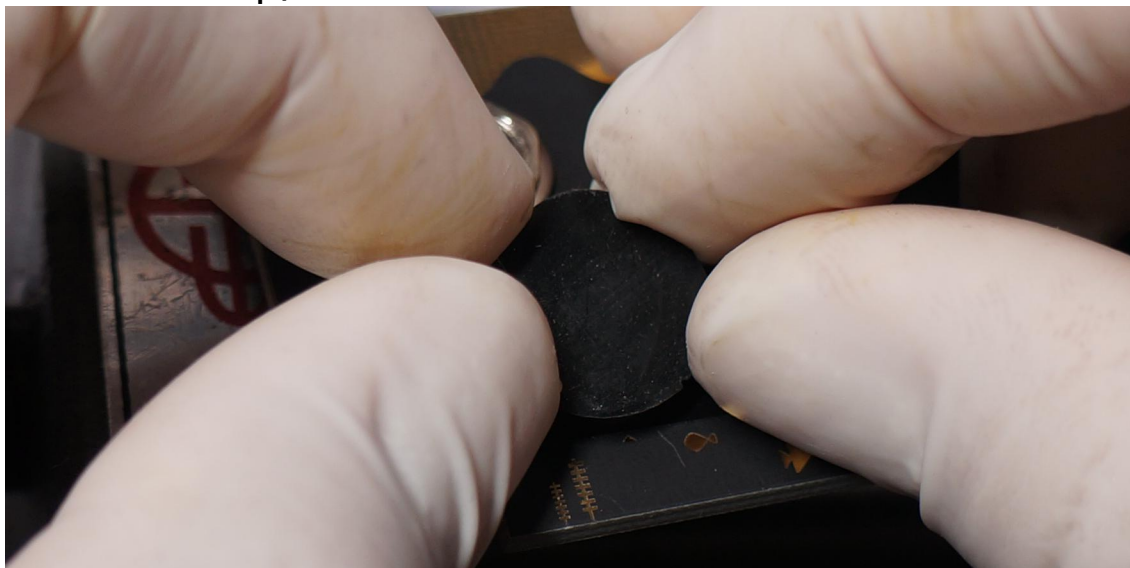
8. reinforce the pad solder joints



9. cut the ground leads from the jacks



10. stick the silicon pads to the XactFSR (there are some tiny triangle marks to help)



11. Finished

