

JASPERWOODS  
RESIDENCES

**TYPE A**



# JASPERWOODS

## RESIDENCES

Unlike any other development in West Cairo, NEWGIZA is proud to announce that it has successfully launched products that aren't available elsewhere such as our very own state-of-the-art studios that are cozy and cleverly designed to make the most of space despite being smaller in surface area.

As the name implies, these residences overlook the lush greenery of the woods adding to the coziness of the design intended to engulf you in con-

tent warmth. The view of greenery is endless. JASPERWOODS is delicately placed amidst a circumference of botanically inspired gardens, giving residents the feeling that they are in their own private park.

The park includes a family friendly park, zen gardens for those wishing to meditate amongst nature, a yoga area, and areas for fitness and walking amongst endlessly cultivated gardens.

# ONE BEDROOM APARTMENT

# GROUND FLOOR



Total Unit Area 95 m<sup>2</sup>

<b>1</b>	Entrance Lobby	1.50 m x 2.40 m
<b>2</b>	Kitchenette	2.25 m x 2.40 m
<b>3</b>	Guest Toilet	1.45 m x 2.40 m
<b>4</b>	M. Bathroom	2.00 m x 2.40 m
<b>5</b>	Dressing Room	1.30 m x 2.00 m
<b>6</b>	Master Bedroom	3.60 m x 5.10 m
<b>7</b>	Reception	4.00 m x 4.90 m
<b>8</b>	Backyard	50 m <sup>2</sup>

All materials, dimensions and drawings are approximate. Information is subject to change without notice. Drawings are not to scale and actual usable floor space may vary from the state floor plans. The developer reserves the right to make revisions to the floor plans

# FIRST | SECOND FLOOR



Total Unit Area 103 m<sup>2</sup>

<b>1</b>	Entrance Lobby	1.50 m x 2.40 m
<b>2</b>	Kitchenette	2.25 m x 2.40 m
<b>3</b>	Guest Toilet	1.45 m x 2.40 m
<b>4</b>	M. Bathroom	2.00 m x 2.40 m
<b>5</b>	Dressing Room	1.30 m x 2.00 m
<b>6</b>	Master Bedroom	3.60 m x 5.10 m
<b>7</b>	Reception	4.00 m x 4.90 m
<b>8</b>	Terrace	1.80 m x 3.80 m

All materials, dimensions and drawings are approximate. Information is subject to change without notice. Drawings are not to scale and actual usable floor space may vary from the state floor plans. The developer reserves the right to make revisions to the floor plans

# TWO BEDROOM APARTMENT

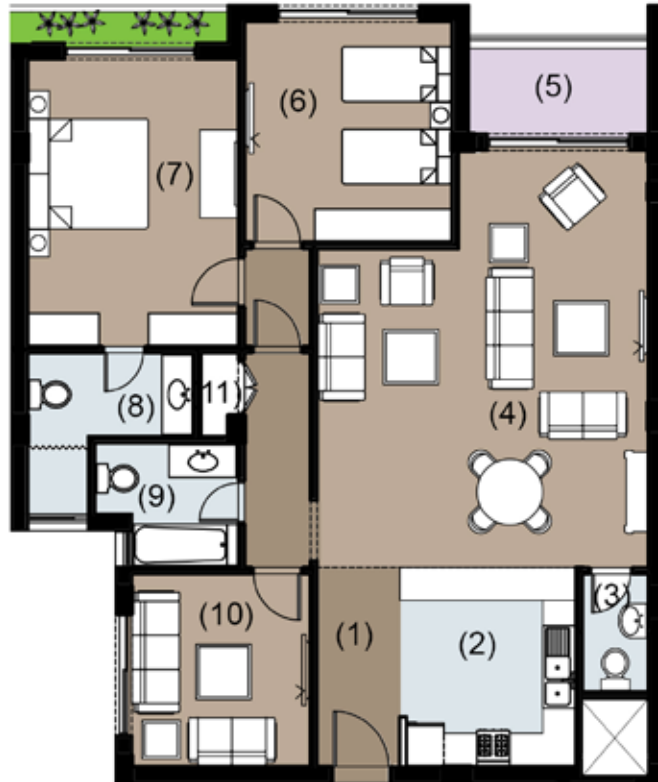
# GROUND FLOOR



Total Unit Area 175 m<sup>2</sup>

<b>1</b>	Entrance Lobby	1.50 m x 3.60 m
<b>2</b>	Kitchen	3.20 m x 3.60 m
<b>3</b>	Guest Toilet	1.20 m x 2.10 m
<b>4</b>	Reception	6.00 m x 7.55 m
<b>5</b>	Bedroom	3.75 m x 4.00 m
<b>6</b>	Master Bedroom	3.80 m x 5.20 m
<b>7</b>	M. Bathroom	2.90 m x 3.00 m
<b>8</b>	Bathroom	2.25 m x 2.35 m
<b>9</b>	Living Room	3.25 m x 3.50 m
<b>10</b>	Utility	0.80 m x 1.50 m
<b>11</b>	Front Yard	70 m <sup>2</sup>

All materials, dimensions and drawings are approximate. Information is subject to change without notice. Drawings are not to scale and actual usable floor space may vary from the state floor plans. The developer reserves the right to make revisions to the floor plans



Total Unit Area 183 m<sup>2</sup>

<b>1</b>	Entrance Lobby	1.50 m x 3.60 m
<b>2</b>	Kitchen	3.20 m x 3.60 m
<b>3</b>	Guest Toilet	1.20 m x 2.10 m
<b>4</b>	Reception	6.00 m x 7.55 m
<b>5</b>	Terrace	1.80 m x 3.25 m
<b>6</b>	Bedroom	3.75 m x 4.00 m
<b>7</b>	Master Bedroom	3.80 m x 5.20 m
<b>8</b>	M. Bathroom	2.90 m x 3.00 m
<b>9</b>	Bathroom	2.25 m x 2.35 m
<b>10</b>	Living Room	3.25 m x 3.50 m
<b>11</b>	Utility	0.80 m x 1.50 m

# THREE BEDROOM APARTMENT

# SECOND | THIRD FLOOR



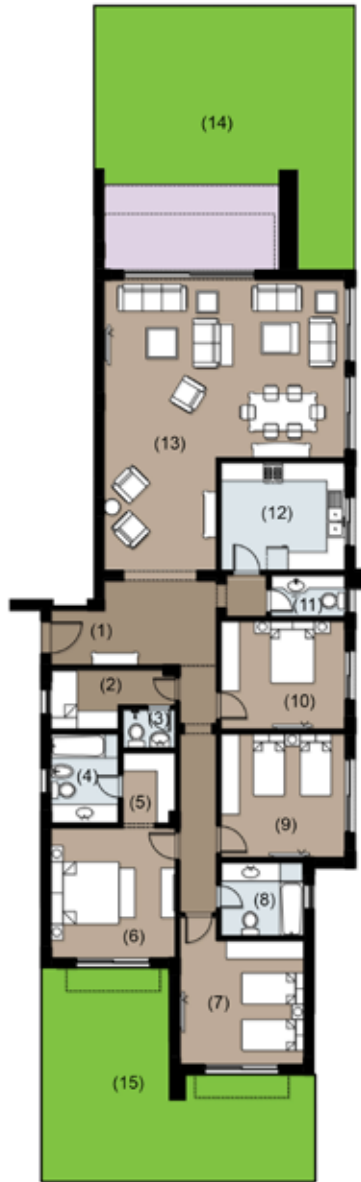
Total Unit Area 216 m<sup>2</sup>

<b>1</b>	Entrance Lobby	3.25 m x 2.75 m
<b>2</b>	Guest Toilet	1.65 m x 1.95 m
<b>3</b>	Utility	1.30 m x 1.95 m
<b>4</b>	Bathroom	1.95 m x 2.60 m
<b>5</b>	Dressing Room	1.95 m x 2.00 m
<b>6</b>	M. Bathroom	1.95 m x 2.50 m
<b>7</b>	Master Bedroom	3.70 m x 5.40 m
<b>8</b>	Bedroom 1	3.60 m x 4.10 m
<b>9</b>	Bedroom 2	3.60 m x 4.10 m
<b>10</b>	Reception	5.50 m x 7.95 m
<b>11</b>	Terrace	1.80 m x 3.80 m
<b>12</b>	Nanny's Room	1.90 m x 1.70 m
<b>13</b>	Nanny's Bathroom	1.40 m x 1.70 m
<b>14</b>	Kitchen	3.40 m x 4.00 m

All materials, dimensions and drawings are approximate. Information is subject to change without notice. Drawings are not to scale and actual usable floor space may vary from the state floor plans. The developer reserves the right to make revisions to the floor plans

# FOUR BEDROOM APARTMENT

# GROUND FLOOR



Total Unit Area 258 m<sup>2</sup>

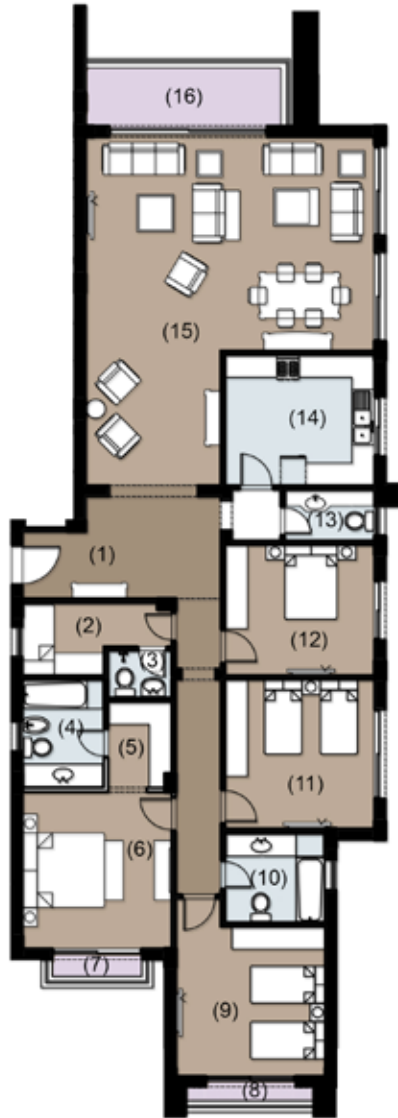
<b>1</b>	Entrance Lobby	2.70 m x 5.30 m
<b>2</b>	Nanny's Room	1.90 m x 4.00 m
<b>3</b>	Nanny's Bathroom	1.25 m x 1.70 m
<b>4</b>	Bathroom	2.15 m x 2.90 m
<b>5</b>	Dressing Room	1.70 m x 2.30 m
<b>6</b>	Master Bedroom	4.00 m x 4.20 m
<b>7</b>	Bedroom 1	4.00 m x 4.00 m
<b>8</b>	Bathroom	2.65 m x 2.40 m
<b>9</b>	Bedroom 2	4.00 m x 4.00 m
<b>10</b>	Bedroom 3	3.50 m x 4.00 m
<b>11</b>	Guest Toilet	1.35 m x 4.00 m
<b>12</b>	Kitchen	3.50 m x 4.00 m
<b>13</b>	Reception	7.70 m x 9.35 m
<b>14</b>	Front Yard	65 m <sup>2</sup>
<b>15</b>	Back Yard	40 m <sup>2</sup>

All materials, dimensions and drawings are approximate. Information is subject to change without notice. Drawings are not to scale and actual usable floor space may vary from the state floor plans. The developer reserves the right to make revisions to the floor plans



# FOUR BEDROOM APARTMENT

# FIRST FLOOR

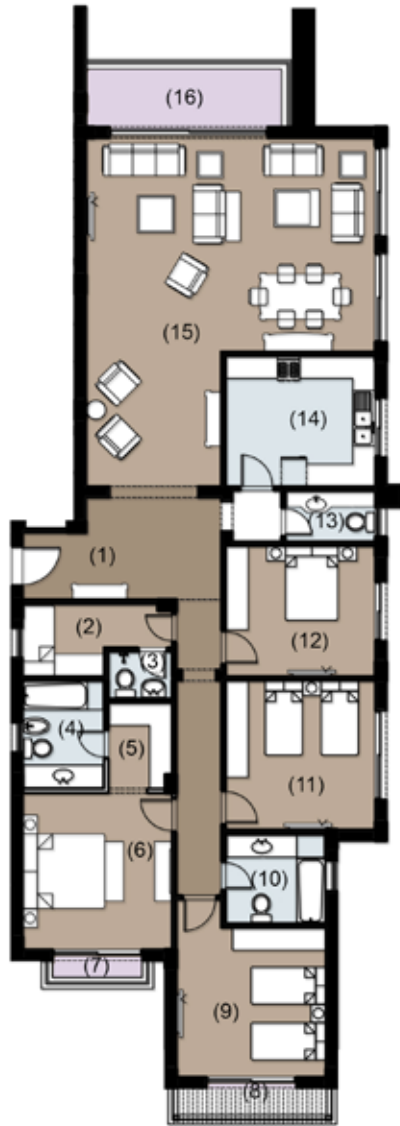


Total Unit Area 275 m<sup>2</sup>

<b>1</b>	Entrance Lobby	2.70 m x 5.30 m
<b>2</b>	Nanny's Room	1.90 m x 4.00 m
<b>3</b>	Nanny's Bathroom	1.25 m x 1.70 m
<b>4</b>	Bathroom	2.15 m x 2.90 m
<b>5</b>	Dressing Room	1.70 m x 2.30 m
<b>6</b>	Master Bedroom	4.00 m x 4.20 m
<b>7</b>	Terrace	0.75 m x 3.00 m
<b>8</b>	Terrace	0.75 m x 3.40 m
<b>9</b>	Bedroom 1	4.00 m x 4.00 m
<b>10</b>	Bathroom	2.40 m x 2.65 m
<b>11</b>	Bedroom 2	4.00 m x 4.00 m
<b>12</b>	Bedroom 3	3.50 m x 4.00 m
<b>13</b>	Guest Toilet	1.35 m x 2.40 m
<b>14</b>	Kitchen	3.50 m x 4.00 m
<b>15</b>	Reception	7.70 m x 9.35 m
<b>16</b>	Shaded Terrace	1.80 m x 5.15 m

All materials, dimensions and drawings are approximate. Information is subject to change without notice. Drawings are not to scale and actual usable floor space may vary from the state floor plans. The developer reserves the right to make revisions to the floor plans

## SECOND | THIRD FLOOR



Total Unit Area 276 m<sup>2</sup>

<b>1</b>	Entrance Lobby	2.70 m x 5.30 m
<b>2</b>	Nanny's Room	1.90 m x 4.00 m
<b>3</b>	Nanny's Bathroom	1.25 m x 1.70 m
<b>4</b>	Bathroom	2.15 m x 2.90 m
<b>5</b>	Dressing Room	1.70 m x 2.30 m
<b>6</b>	Master Bedroom	4.00 m x 4.20 m
<b>7</b>	Terrace	0.75 m x 3.00 m
<b>8</b>	Terrace	0.85 m x 4.60 m
<b>9</b>	Bedroom 1	4.00 m x 4.00 m
<b>10</b>	Bathroom	2.40 m x 2.65 m
<b>11</b>	Bedroom 2	4.00 m x 4.00 m
<b>12</b>	Bedroom 3	3.50 m x 4.00 m
<b>13</b>	Guest Toilet	1.35 m x 2.40 m
<b>14</b>	Kitchen	3.50 m x 4.00 m
<b>15</b>	Reception	7.70 m x 9.35 m
<b>16</b>	Shaded Terrace	1.80 m x 5.15 m

All materials, dimensions and drawings are approximate. Information is subject to change without notice. Drawings are not to scale and actual usable floor space may vary from the state floor plans. The developer reserves the right to make revisions to the floor plans



**3 AL MANSOUR MOHAMED ST., ZAMALEK - 11211, CAIRO, EGYPT.**

**T: +202 27390700 | F: +202 27351114 | SALES CENTER: 16656**

**NEWGIZA.COM**