

JASPERLAKE
RESIDENCES

TYPE D



JASPERLAKE

RESIDENCES

JASPERLAKE executive flats offer a life with a breathtaking lake view that is designed to look as beautiful as nature painted it.

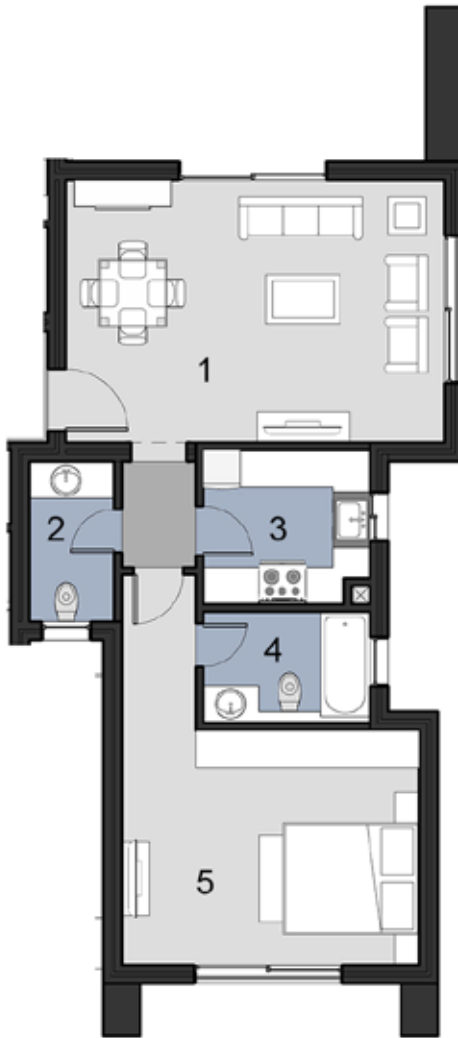
The landscape here was designed to embrace a central lake, breathing in the essence of the location and its surroundings and exhaling it back out into the design catering to a distinctive layout and spaces.

Through its modern architecture that delineates the life we know, it makes up a pedestrian-friendly environment that emits comfort and tranquility.

Accommodation options range from fully finished one-three bedroom executive flats to duplexes.

ONE BEDROOM APARTMENT

GROUND FLOOR



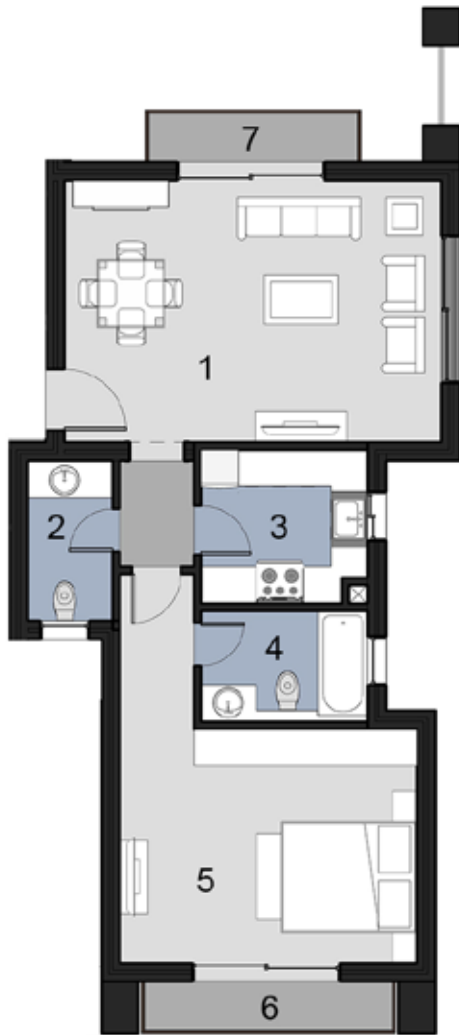
Total Unit Area

96 m²

1	Reception	6.10 m x 4.25 m
2	Toilet	1.40 m x 2.60 m
3	Kitchen	2.70 m x 2.50 m
4	Bathroom	2.70 m x 1.80 m
5	Bedroom	4.80 m x 3.80 m

All materials, dimensions and drawings are approximate. Information is subject to change without notice. Drawings are not to scale and actual usable floor space may vary from the state floor plans. The developer reserves the right to make revisions to the floor plans

FIRST FLOOR

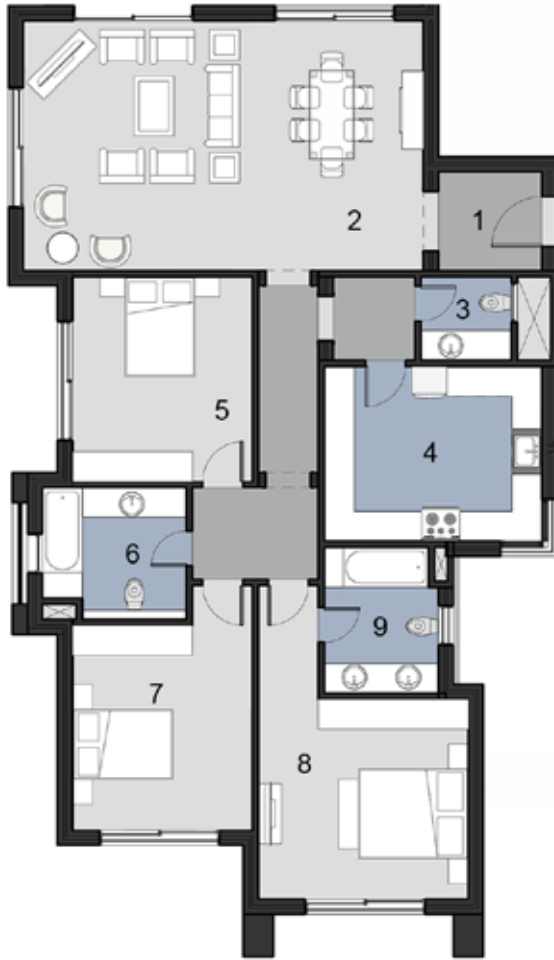


Total Unit Area	99 m²	
1	Reception	6.10 m x 4.25 m
2	Toilet	1.40 m x 2.60 m
3	Kitchen	2.70 m x 2.50 m
4	Bathroom	2.70 m x 1.80 m
5	Bedroom	4.80 m x 3.80 m
6	Terrace	4.20 m x 0.85 m
7	Terrace	3.50 m x 0.85 m

All materials, dimensions and drawings are approximate. Information is subject to change without notice. Drawings are not to scale and actual usable floor space may vary from the state floor plans. The developer reserves the right to make revisions to the floor plans

THREE BEDROOM APARTMENT

GROUND FLOOR



Total Unit Area 197 m²

1	Entrance Lobby	2.10 m x 2.00 m
2	Reception	8.00 m x 5.00 m
3	Toilet	1.80 m x 1.70 m
4	Kitchen	4.35 m x 3.50 m
5	Bedroom	3.60 m x 4.10 m
6	Bathroom	2.90 m x 2.65 m
7	Bedroom	3.60 m x 4.90 m
8	Master Bedroom	4.20 m x 4.00 m
9	Bathroom	2.45 m x 2.90 m

All materials, dimensions and drawings are approximate. Information is subject to change without notice. Drawings are not to scale and actual usable floor space may vary from the state floor plans. The developer reserves the right to make revisions to the floor plans

FIRST FLOOR



Total Unit Area 207.5 m²

1	Entrance Lobby	2.10 m x 2.00 m
2	Reception	8.00 m x 5.00 m
3	Toilet	1.80 m x 1.70 m
4	Kitchen	4.35 m x 3.50 m
5	Bedroom	3.60 m x 4.10 m
6	Bathroom	2.90 m x 2.65 m
7	Bedroom	3.60 m x 4.90 m
8	Master Bedroom	4.20 m x 4.00 m
9	Bathroom	2.45 m x 2.90 m
10	Terrace	3.60 m x 0.85 m
11	Terrace	3.90 m x 1.80 m

All materials, dimensions and drawings are approximate. Information is subject to change without notice. Drawings are not to scale and actual usable floor space may vary from the state floor plans. The developer reserves the right to make revisions to the floor plans

THREE BEDROOM DUPLEX

Total Unit Area

301 m²

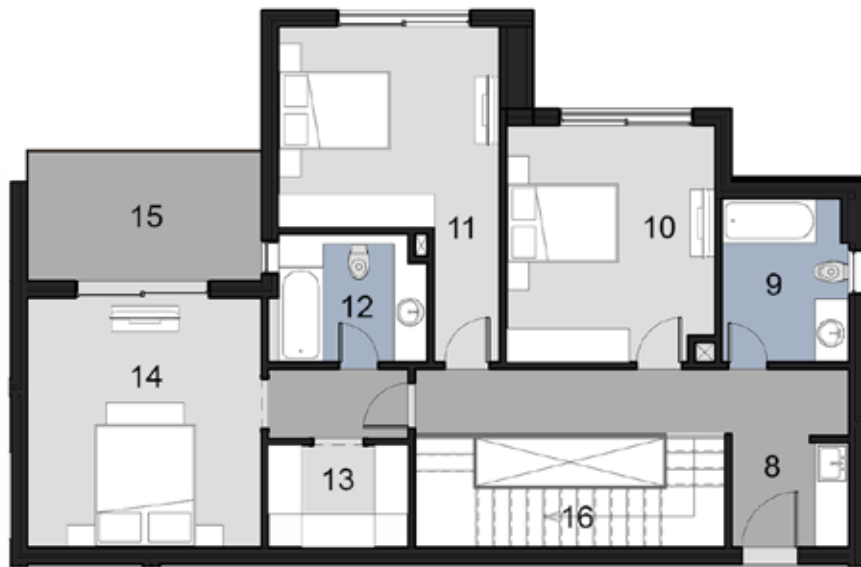
GROUND FLOOR



1	Reception	6.85 m x 6.30 m
2	Toilet	2.00 m x 1.60 m
3	Kitchen	3.30 m x 4.25 m
4	Toilet	2.15 m x 1.75 m
5	Maid's Room	2.10 m x 2.90 m
6	Storage	2.10 m x 1.40 m
7	Stairs	5.60 m x 2.00 m

All materials, dimensions and drawings are approximate. Information is subject to change without notice. Drawings are not to scale and actual usable floor space may vary from the state floor plans. The developer reserves the right to make revisions to the floor plans

FIRST FLOOR



8	Kitchenette	2.10 m x 1.90 m
9	Bathroom	2.15 m x 2.95 m
10	Bedroom	3.75 m x 4.25 m
11	Bedroom	4.00 m x 3.60 m
12	Bathroom	2.85 m x 2.30 m
13	Dressing Room	2.50 m x 1.85 m
14	Master Bedroom	4.20 m x 4.50 m
15	Terrace	4.20 m x 2.35 m
16	Stairs	5.60 m x 2.00 m

All materials, dimensions and drawings are approximate. Information is subject to change without notice. Drawings are not to scale and actual usable floor space may vary from the state floor plans. The developer reserves the right to make revisions to the floor plans

THREE BEDROOM DUPLEX

Total Unit Area

313 m²

SECOND FLOOR



1	Reception	6.85 m x 6.30 m
2	Toilet	2.00 m x 1.60 m
3	Kitchen	3.30 m x 4.25 m
4	Toilet	2.15 m x 1.75 m
5	Maid's Room	2.10 m x 2.90 m
6	Storage	2.10 m x 1.40 m
7	Terrace	8.80 m x 2.80 m
8	Stairs	5.60 m x 2.00 m

All materials, dimensions and drawings are approximate. Information is subject to change without notice. Drawings are not to scale and actual usable floor space may vary from the state floor plans. The developer reserves the right to make revisions to the floor plans

THIRD FLOOR



9	Kitchenette	2.10 m x 1.90 m
10	Bathroom	2.15 m x 2.95 m
11	Bedroom	3.75 m x 4.25 m
12	Bedroom	4.00 m x 3.60 m
13	Bathroom	2.85 m x 2.30 m
14	Dressing Room	2.50 m x 1.85 m
15	Master Bedroom	4.20 m x 4.50 m
16	Terrace	4.20 m x 2.35 m
17	Stairs	5.60 m x 2.00 m

All materials, dimensions and drawings are approximate. Information is subject to change without notice. Drawings are not to scale and actual usable floor space may vary from the state floor plans. The developer reserves the right to make revisions to the floor plans



3 AL MANSOUR MOHAMED ST., ZAMALEK - 11211, CAIRO, EGYPT.

T: +202 27390700 | F: +202 27351114 | SALES CENTER: 16656

NEWGIZA.COM