



**VERGE**

# NORTHAMPTON INTERNATIONAL CYCLOCROSS

Presented By:

**cycle-smart**

[www.nohocx.com](http://www.nohocx.com)



## Dates

November 12-13, 2022



## Location

Look Park - Northampton, MA



## Social Media

Instagram / Twitter / Facebook:  
@nohocx



cycle-smart



# Inclusion Policy



The Northampton International organization firmly believes that all attendees should have an equal opportunity to participate in our event regardless of their race, color, religion, disability, age, gender identity, sexual orientation, or national origin. We recognize that participation in sport is a human right. We strive to create an enjoyable event for those currently active in cyclocross in all the different ways they participate, and an inviting one for those who have not joined us yet. It is our obligation as race organizers and athletes to create a safe and welcoming space for athletes, staff, and spectators from different backgrounds, identities, and abilities, and this event is part of our work to foster such spaces. The Northampton International follows all rules and regulations for participation and inclusion outlined by USA Cycling and the UCI. Harassment of participants protected under those standards will not be tolerated. **Anyone who attempts to harass or otherwise intimidate other athletes, staff, or spectators will be asked to leave the event immediately.** Harassment or intimidation will be reported to race officials, USA Cycling, SafeSport, and local authorities. We will use our power and privilege to protect our friends who need it. Our goal is to foster a vibrant and diverse cycling community. We are grateful for your partnership in working towards that goal.

# Covid-19 Guidelines



The Northampton International will adhere to all USA Cycling, Union Cycliste Internationale, and local and regional government guidelines for Covid-19 precautions.

Event staff will be masked when appropriate.

Participants and spectators are not required to be masked.

If you have symptoms or have been in contact with individuals suspected of or known to be COVID-19 positive, please stay home. Refunds/credits are available.

## About Us

This year's **Verge Northampton International Cyclocross presented by Cycle-Smart** (#NohoCX), on November 12th and 13th, will mark the 31st edition of the race. As the oldest UCI cyclocross race in North America, the event's storied heritage is unmatched, and each year is a continuation of its place as the lodestar of New England cyclocross.

## Sponsors



**cycle-smart**



## Schedule

# Friday

Cycle-Smart Course Inspection Clinic:

Pre-ride Saturday's course with Cycle-Smart coaches. Ride and re-ride sections, get line and technique advice, and dial the course for the weekend. All levels are welcome. **Register in advance on [Bikereg.com](https://www.bikereg.com), and check in at the Cycle-Smart tent at the last corner of the course at 1:45 on Friday.**

**2 PM start, 1-hour clinic, \$25.**

Course will be open for all riders for course inspection and pre-ride starting at 3 PM.

There will be Friday night number pick-up for amateur categories only from 6:30 to 8:30 at Northampton Bicycle. Amateur categories will use the same number both days. UCI categories will get new numbers and need to pick up on-site each day. The bar at Northampton Bicycle, the Barb and Olive, will be open!

Northampton Bicycle, 319 Pleasant St, Northampton, MA 01060

## Schedule

# Saturday and Sunday

Time	Category	Duration	Entry	Prizes/Places	Field Limit
8:00 am	Course open for warm-up - all racers	N/A	N/A	N/A	N/A
8:30 am	Cat. 4 and Novice Men	30 min	\$50	Medals/3	100
8:31 am	13-16 Junior Men Open	30 min	\$25	Medals/3	50
9:15 am	Cat. 4 and Novice Women	30 min	\$50	Medals/3	50
9:16 am	13-16 Junior Women Open	30 min	\$25	Medals/3	50
9:17 am	9-12 Junior Boys and Girls Open	2 laps	\$25	Medals/3	50
10:00 am	Course open for warm-up - all racers	15 min	N/A	N/A	N/A
10:15 am	40-54 Master Men Cat. 1-4	40 min	\$50	Medals/3	75
10:16 am	55+ Master Men Cat. 1-4	40 min	\$50	Medals/3	75
11:15 am	17-18 UCI Junior Women	40 min	\$50	\$889/15	50
11:16 am	40-54, 55+ Master Women Cat. 1-4	40 min	\$50	Medals/3	50
11:17 am	Cat. 3 Women	40 min	\$50	Medals/3	50
12:15 pm	Course open for warm-up - UCI Elite Men and Women Only	15 min	N/A	N/A	N/A
12:15 pm	Youth Races (3-12 years old) presented by Bikereg - (Expo Area) / push bikes, bikes with training wheels, and pedal bikes	various	FREE	Medals + Ribbons	75
12:30 pm	17-18 UCI Junior Men	40 min	\$50	\$889/15	50
12:31 pm	Cat. 3 Men	40 min	\$50	Medals/3	100
1:30 pm	UCI Elite/U23 Women presented by Joe's Garage	50 min	\$60	\$1695/20	150
2:45 pm	UCI Elite/U23 Men	60 min	\$60	\$1695/20	150

# Prize List

Place	Elite Men and Women	Junior Men and Women
1st	\$389	\$167
2nd	\$200	\$111
3rd	\$133	\$78
4th	\$100	\$67
5th	\$94	\$56
6th	\$89	\$56
7th	\$83	\$56
8th	\$78	\$44
9th	\$72	\$44
10th	\$67	\$44
11th	\$61	\$33
12th	\$56	\$33
13th	\$50	\$33
14th	\$44	\$33
15th	\$39	\$33
16th	\$28	
17th	\$28	
18th	\$28	
19th	\$28	
20th	\$28	
<b>Total</b>	<b>\$1,695</b>	<b>\$889</b>

Prize list is based on the UCI Financial Obligations for a Class 2 event.

The rider's contribution to Anti-Doping of 2% is included in the Prize Money.

Prize money will be paid in cash at registration once results are official.

# Points Scale

Place	UCI Elite Men and Women C2	UCI Junior Men and Women
1	40	30
2	30	20
3	20	15
4	15	12
5	10	10
6	8	8
7	6	6
8	4	4
9	2	2
10	1	1

# Podium Schedule

## **10:00 am:**

Cat 4 and Novice Men  
Cat 4 and Novice Women  
13-16 Junior Men Open  
13-16 Junior Women Open  
9-12 Junior Boys Open  
9-12 Junior Girls Open

## **12:00 pm (immediately following the finish of the UCI Junior Women's event):**

40-54 Masters Men Cat. 1-4  
55+ Masters Men Cat. 1-4  
17-18 UCI Junior Women  
40-54 Masters Women Cat. 1-4  
55+ Masters Women Cat. 1-4  
Cat 3 Women

## **1:15 pm (immediately following the finish):**

17-18 UCI Junior Men  
Cat 3 Men

**Elite/U23 Women and Elite/U23 Men immediately following their respective finishes.**

# Rules

This event is held under UCI and USA Cycling permits (**2022-6388**) and governed by UCI and USAC rules. UCI / USAC scale of penalties apply to the respective races. UCI rules can be downloaded from [www.uci.org](http://www.uci.org)

## Licensing

Men Elite, Women Elite, Men Junior, and Women Junior races are designated UCI C2 events. Riders entering the Elite Women and Men's events must have a UCI license. US UCI Junior Men and Women must have a UCI ID and a valid racing license. Non-US Junior Men and Women must have a UCI license. A domestic USA Cycling license is acceptable for other categories, which are run under USAC rules.

## Pit Access

Only authorized personnel are allowed access to the equipment pits. Pit Passes will be distributed at registration to each competitor (one per entrant) in UCI categories.

In non-UCI events, common sense will be the rule. The Pit Official will have full authorization to deny access to any person who interferes or hinders operations in the pit. The pit is not a spectator spot.

## Racing Age

Your racing age for the 2022-23 cyclocross season is the actual age you will be on December 31, 2023.

## Registration / Number Pick-up

Pre-registration only. Online registration closes on Thursday, November 10th, at 8 PM. Absolutely no refunds. On-line service fee applied based on BikeReg standard service fee rates.

Please note you will be using the same set of numbers for both Saturday AND Sunday. So hang onto them!

Number pick-up opens at 7 am and closes 30 minutes before each event. Failure to pick up your number at least 30 minutes prior to your event will result in your number being reassigned.

There will be Friday night number pick-up for amateur categories only from 6:30 to 8:30 at Northampton Bicycle. Amateur categories will use the same number both days. UCI categories will get new numbers and need to pick up on-site each day. The bar at Northampton Bicycle, the Barb and Olive, will be open!

Kids races begin at 12:15 PM in the expo area. Please pre-register your kids if possible! The races will be broken up into kids/youth races ages 3-5, 6-8, and 9-12. The kids/youth races are FREE and will be 1-5 laps. We are limiting the field to 50 so be sure to register early. All kids bikes are allowed including balance bikes, bikes with training wheels, and pedal bikes. Helmets are required!

## Equipment

No flat bars or tires wider than 33 mm allowed in UCI events. Mountain bikes without bar ends are allowed in USAC races, and no tire width will be enforced.



# Rules cont.

## Call Ups/Start Order

**Races will be lined-up in the starting grid via the following methods:**

- Races will be staged via [crossresults.com](https://crossresults.com) ranking for non-UCI classes.
- UCI races will be staged according to UCI rules, which means UCI points followed by random draw.

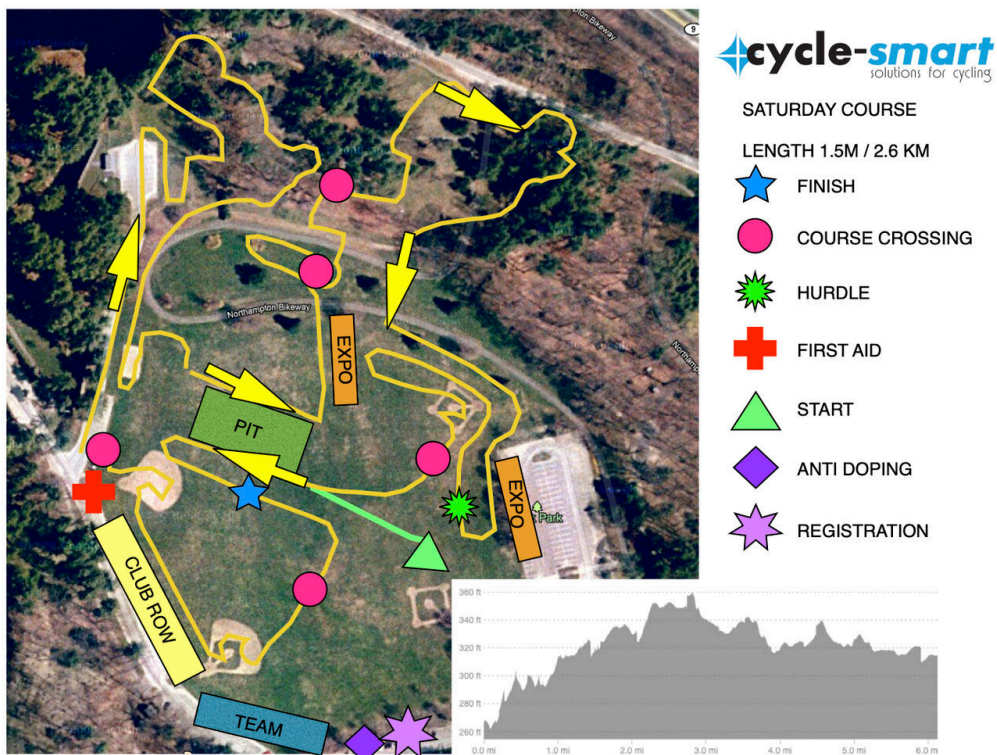
## Anti-Doping

All races are conducted under USADA and WADA anti-doping regulations. Northampton International Cyclocross is part of the USA Cycling RaceClean program. Riders may be tested and selections for doping control will be posted on the Results Board. Doping control station is marked on the map.

# Course

## Day 1

Passing immediately through pit 2 and then the finish line on Day 1, the course loops around a few sections of grass and dirt before hitting a long pavement stretch, leading to a steep loose run up to the top level of the course. On the top level the course skirts the top of the bluff, dips in front of the gazebo then turns diagonally down the slope of the bluff back to the lower level. The course then skirts the railroad tracks and heads into a straight sandpit, which may be a run. Exiting the sand, the course heads back towards the tracks then turns right into the main field area and into pit 1. Passing through the pit the course turns left, crosses the railroad tracks, turns left again, and follows the inside of the tracks to a series of turns, setting up for another railroad crossing and a steep hill that may be a ride or run depending on conditions. At the top of the hill riders enter a pine forest section with numerous bumps and roots. Winding through the trees the riders pass over gravel path, hard pack, and pavement, eventually paralleling the park road. Turning away from the park road the course descends a winding gravel path back towards the third and fastest rr crossing. Back on grass the course heads left to the main parking area and crosses the rr one last time. A sweeping left turn on grass brings the riders along the expo area and towards a single set of 30 cm planks, 6 meters apart. Passing the planks the course doubles back on itself with another sweeping 180-degree turn and heads back towards the railroad tracks. Turning to follow the tracks again a series of decreasing radius turns bring the riders to pit 2 again. Passing pit 2, the course heads toward the final, large, sweeping U-turn, and then is 100 meters to the finish. Course distance is approximately 2.6 km.



# Course cont.

## Day 2

Day 2's course is essentially Day 1's course in reverse, with an off camber descent replacing Saturday's traditional run up.



# Misc Event Info

## Parking Fee

**Look Park parking fee** is \$5 for a one-day pass and \$8 for a two-day pass. **Cash or check accepted.**

## Directions

### Start Line Address:

300 N Main St, Northampton, MA 01062

### Traveling south on I-91:

Take exit 20 to the first stop light and turn right on Bridge Rd. Bridge Rd. ends at Look Park. Take a left on Rt. 9, and an immediate right into the park.

### Traveling north on on I-91:

Take exit 19 and continue straight on to Damon Rd., which becomes Bridge Rd. Bridge Rd. ends at Look Park. Take a left on Rt. 9, and an immediate right into the park.

## Lodging

For local hotel information: [Visit Hampshire County](#)

## Club Row

Any club with riders registered in the race can also purchase a team tent area in Club Row, as noted on the [Course Map page](#). Each spot includes premier parking along the start/finish stretch, one reserved parking spot, and a 10 x 10 area on grass directly in front of the parking spot. Clubs may purchase multiple spots on [our Registration page](#). The price is \$50 for the weekend, and spots are limited.

Individual riders will not be prohibited from utilizing pop up tents as space allows adjacent to their vehicle in normal parking areas around the park.

## Team Parking

For larger teams with a trailer or who need more space, team parking is available, and includes a 20 x 30 footprint, and parking for a truck and trailer, for \$150.

## Expo Area

Businesses who wish to display and sell at the event can purchase a 10 x 10 area located in the expo area as noted on the Course Map page. The price is \$250 for the weekend, and spots are limited.

All options can be purchased directly on the event registration page on [Bikereg.com](#).

If you have questions or unique requirements, please contact us at [nohocx@cycle-smart.com](mailto:nohocx@cycle-smart.com).

# Misc Event Info cont.

## Showers

Due to Covid concerns and limitations, showers are not available this year.

## Nearest Hospital

The closest hospital to Look Park is Cooley Dickinson Hospital, located in Northampton. First responder and EMT staff will be located on site at the race venue for first aid and other emergency medical services.

### **Cooley Dickinson Hospital**

[30 Locust St](#)

[Northampton, MA 01060](#)

(413) 582-2000

## Results

Results will be posted on the Trailer, near the start/finish, 30 to 120 minutes after each race finish. Once the results are posted there is a 15 minute protest period. If you feel a mistake has been made, you must call errors to the attention of the Chief Judge during the protest period. Mistakes in the results are most often due to your race number not being placed in the proper position where it can be seen by the finishing video camera, or another rider next to you obscured your race number from the camera. The Chief Judge can be found near the finish line area and is the official responsible for determining the race results. The Chief Judge will try to correct any results errors during the protest period.

Results provided by Velocity Results.

# Contact Info

## Sponsorship Opportunities

NohoCX offers your business the opportunity to market your services and products to a diverse audience drawing on several of the economic and cultural spectrums from throughout New England.

Sponsorship options are available at several different levels of commitment, and are tailored to provide your business with a maximal amount of exposure and value for your sponsorship dollars.

### **Please contact Adam Myerson**

adam@cycle-smart.com • 413-204-3202.

## Officials

### **Christian Cote**

UCI President of the  
Commissaire's Panel  
cote.christ@gmail.com

### **Jeff Poulin**

Assistant PCP and Chief  
Referee  
jeffrey.s.poulin@gmail.com

### **Gary Bavolar**

Commissaire  
gary.bavolar@gmail.com

### **Lincoln Philips**

Chief Judge  
belizecity@comcast.net

### **Tom Mahoney**

Race Secretary  
tmahoney@usacycling.org

### **Alissa Weigand**

Assistant Judge  
alissaweigand@hotmail.com

### **Gary Toth**

Assistant Judge  
gdtoth@hotmail.com

### **Shaun Weigand**

Assistant Referee  
shaunweigand@hotmail.com

## Staff

### **Adam Myerson - Cycle-Smart**

Event President  
adam@cycle-smart.com

### **Alec Donahue - Cycle-Smart**

Event Director  
alecdonahue@cycle-smart.com

### **Chris Niesen - JAM Fund**

Technical Director  
Cniesen1@icloud.com

### **John Frey - Velocity Results**

Results Director  
johndfrey1@gmail.com

### **Meesha Crowther**

Registration Director  
meesha2565@yahoo.com

### **Meghan McSheffrey-Morin**

Expo Director  
meghanamorin@gmail.com

### **Ellen Noble**

Sponsorship Director  
ellen.rose.noble@gmail.com

### **Kathryn Slater**

Volunteer Coordinator  
kataslater@gmail.com

### **Dr. Joseph Lellman**

Race Doctor  
joellleman@comcast.net