

Xtra-PC Quick Start Guide

Initial Setup

NOTE: All applications are installed directly to the Xtra-PC USB device and not to any of your existing internal HDDs or other storage.

NOTE: During the initial setup, the response time when you hit enter can seem quite long. This is normal during the set up process.

1. Plug the Xtra-PC USB device into a USB port on your computer
2. Restart (reboot) your computer.

NOTE: If your computer loads as it always has and not to the Xtra-PC USB device, then you'll need to change your computer settings so that it will boot (start) from the Xtra-PC USB. Please consult your computer's documentation on how to change it to boot from a USB drive.

3. After it boots to the Xtra-PC USB device, you will be prompted to enter a password for the administrator account, and once you agree to the terms of the license agreement, check the box. Then click on "OK." If you do not want to proceed, click on "Quit" and your computer will shut down.



The screenshot shows a dialog box with the Xtra-PC logo at the top. Below the logo, it says "Thank you for using Xtra-PC." and "Please choose a password for your administrator account:". There are two input fields for "Password:" and "Confirm Password:", both containing "*****". Below these fields is a checked checkbox with the text: "By checking this box and continuing, you agree that you've read and accepted the software license terms as specified at <http://www.xtra-pc.com/eula.html>." A "Note" section follows, stating: "A few moments after clicking 'OK', you will get to a login screen. Please use the following credentials to log in:" with "Username: administrator" and "Password: <The password you entered above>". At the bottom right, there are "Quit" and "OK" buttons.

4. A few moments after clicking “OK,” you will get the Xtra-PC login screen. Log in with the user “administrator” and the password you entered on previous screen.



5. After logging in, you will see a welcome screen:



6. You must connect to your network for the installation to continue. You can either connect to your wireless network or your wired network. We don't recommend that you do both at the same time.


To connect to your wired network, follow these steps:

1. Plug your network cable into the network port on your computer.

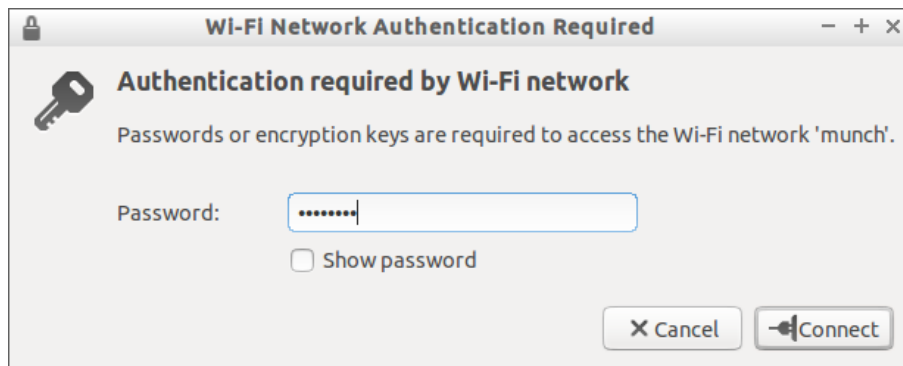
2. Xtra-PC will detect the connection and will connect to your network. You'll know it's connected to your network when a message pops up saying that you're now connected. Also, the icon of the two computer monitors in the bottom right corner will change to an icon showing two arrows.

To connect to your wireless network, follow these steps:

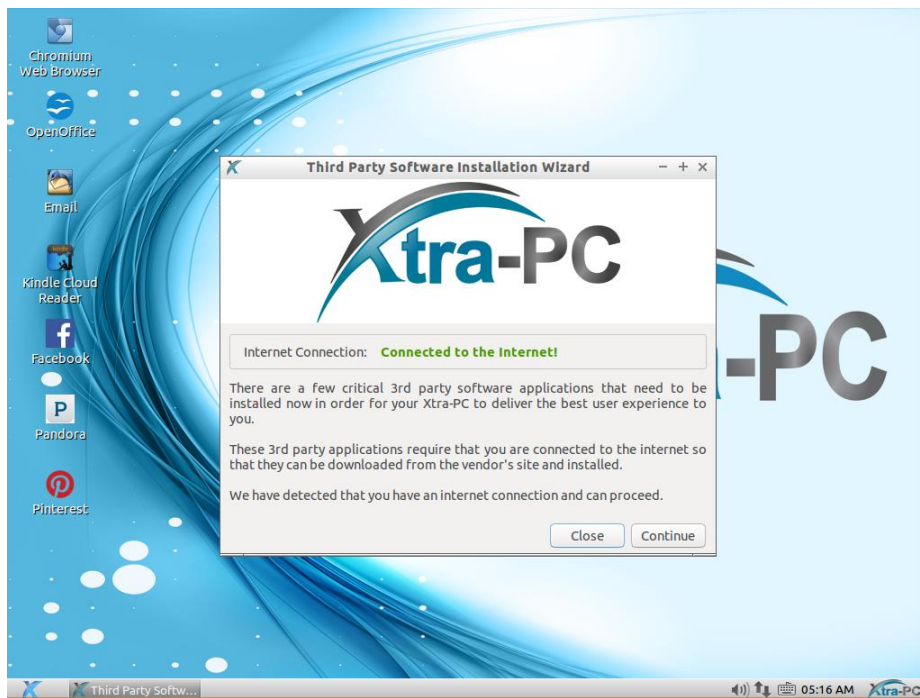
1. Left click on the icon of the two computer monitors in the bottom right corner.
2. A menu will come up; about halfway down the menu, you will see a list of detected wireless networks. Left click on your network. If you don't see your wireless network, then you might have wireless turned off on your computer hardware. This will be a button on your

keyboard or a switch or button on the side of your computer that looks like this:  If it's turned off (usually indicated by an orange light), turn it on (usually indicated by a blue light.) Then wait about thirty seconds and recheck the list of available wireless networks to see if your network now appears.

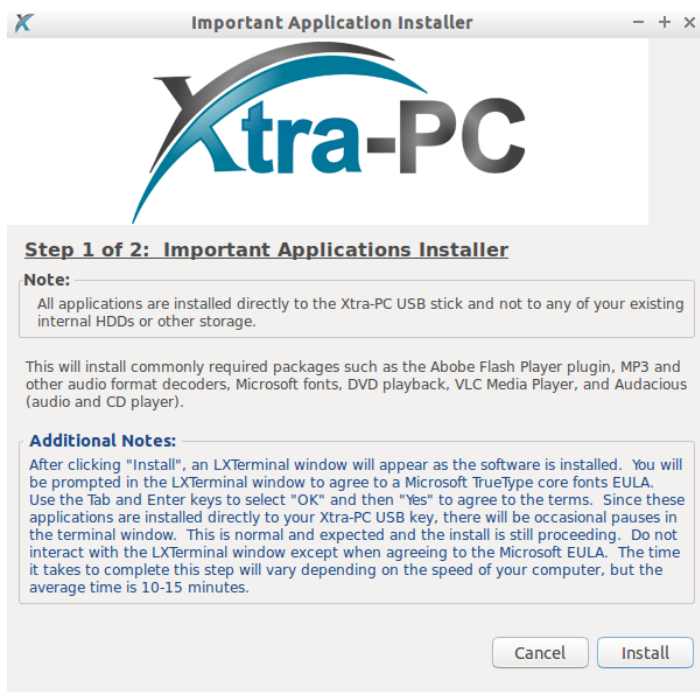
3. A screen will come up asking for a password. Enter your wireless password and left click on "Connect":



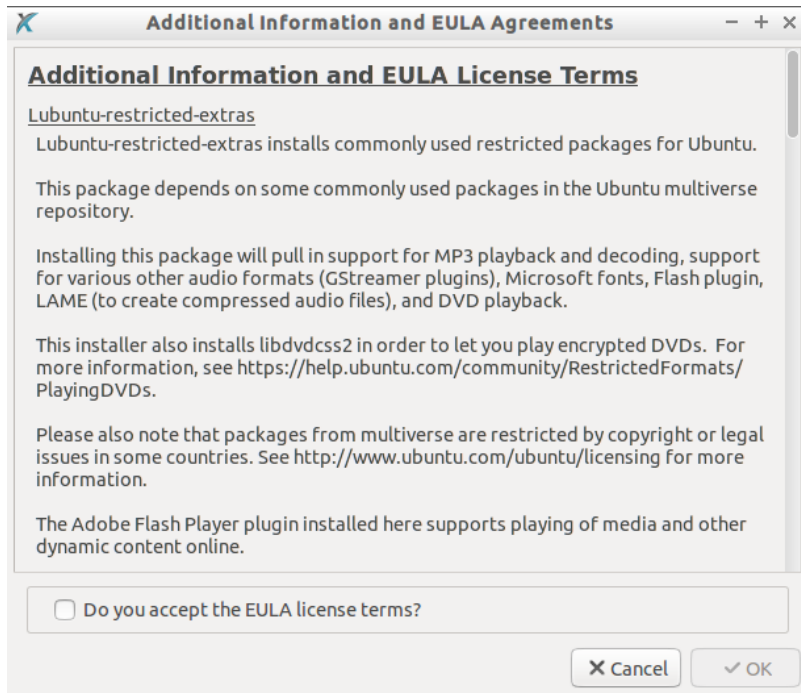
4. You will know you've connected to your wireless network when a message pops up saying that you're now connected. Also, the icon of the two computer monitors will change to an icon showing the signal strength indicator.
7. Once you are connected to your network, click "Continue".
8. You will see the Third Party Software Installation Wizard screen:



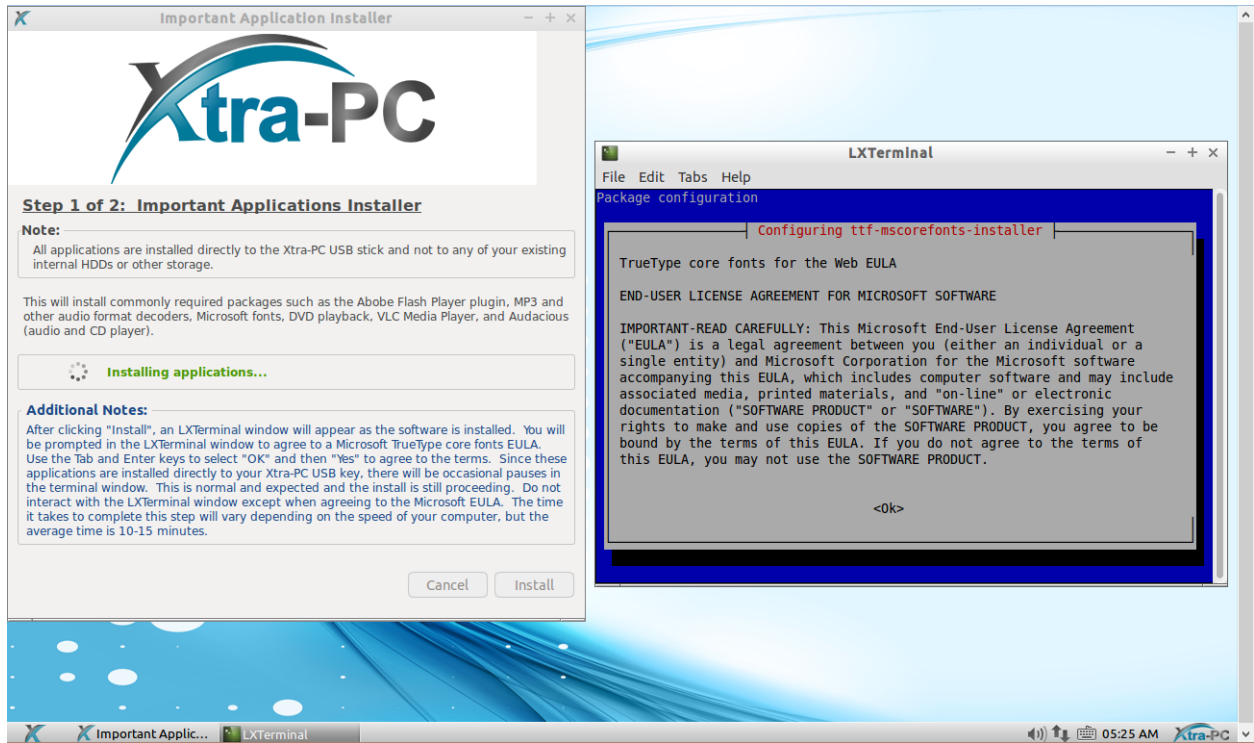
9. Click “Continue”. You will see the “Step 1 or 2 Important Applications Installer” screen:



10. Click on “Install”. You will see the Additional Information and EULA agreements window. Click the box to agree to the EULA terms and then click “OK” to begin the install:



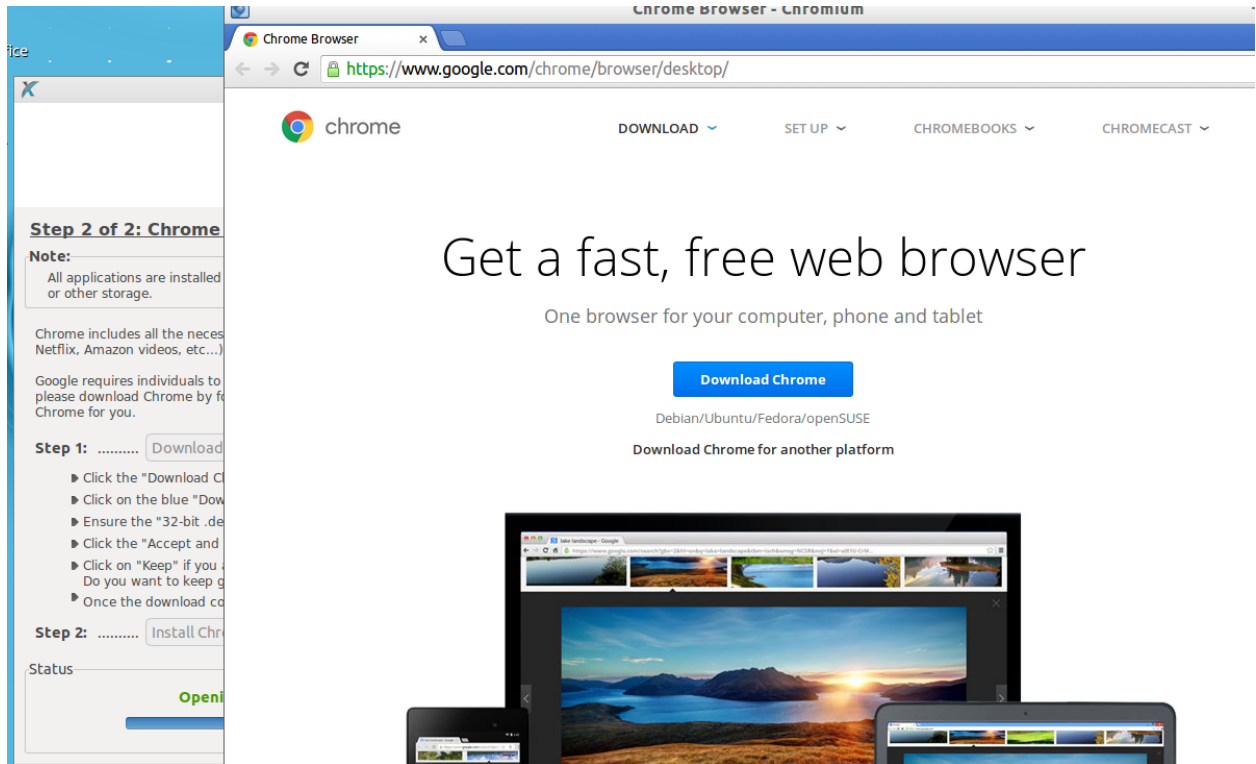
11. After clicking "OK", an LXTerminal window will appear as the software is installed. During the installation, you will be prompted in the LXTerminal window to agree to a Microsoft TrueType core fonts EULA. Use the Tab and Enter keys to select "OK" and then "Yes" to agree to the terms. Since these applications are installed directly to your Xtra-PC USB key, there will be occasional pauses in the terminal window. This is normal and expected and the install is still proceeding. Do not interact with the LXTerminal window except when agreeing to the Microsoft EULA. The time it takes to complete this step will vary depending on the speed of your computer, but the average time is 10-15 minutes.



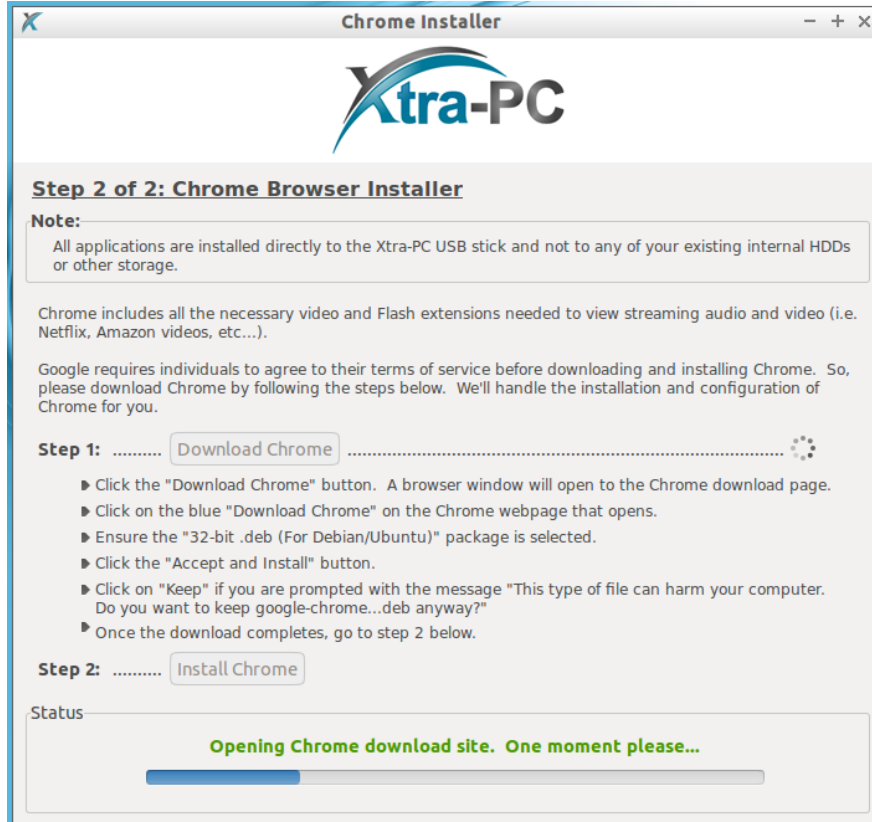
12. If Step 1 installs without any issues, you will see Step 2 of 2: Chrome Browser Installer:

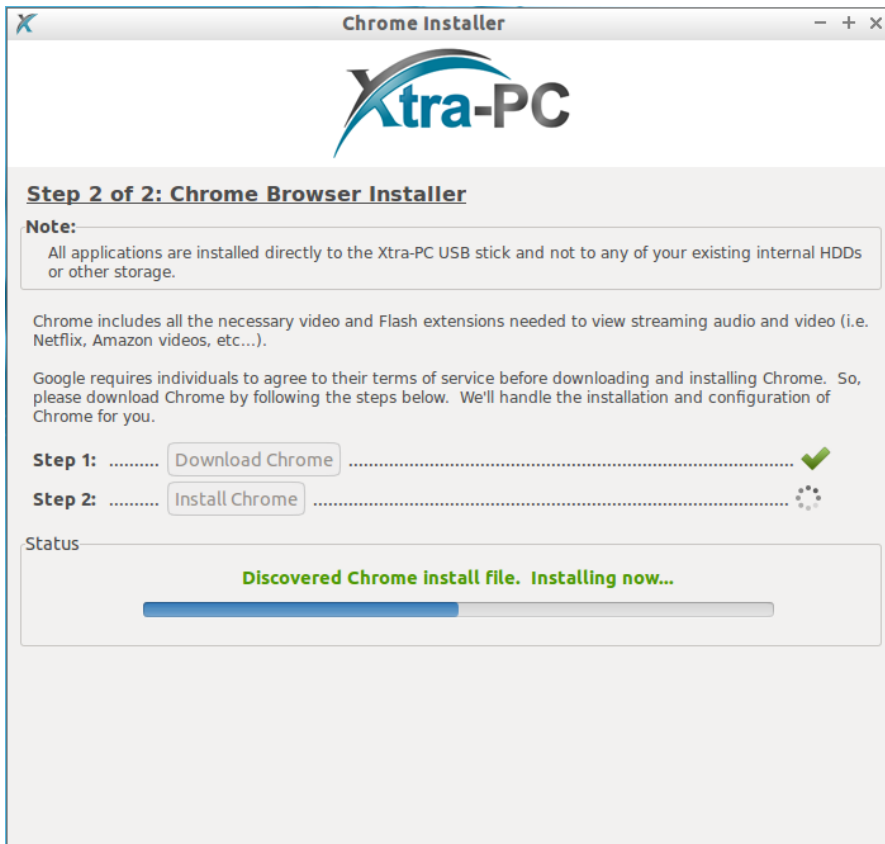


13. Click "Download Chrome" to begin Step 2. After clicking "Download Chrome", a browser window will open to the Chrome download page.

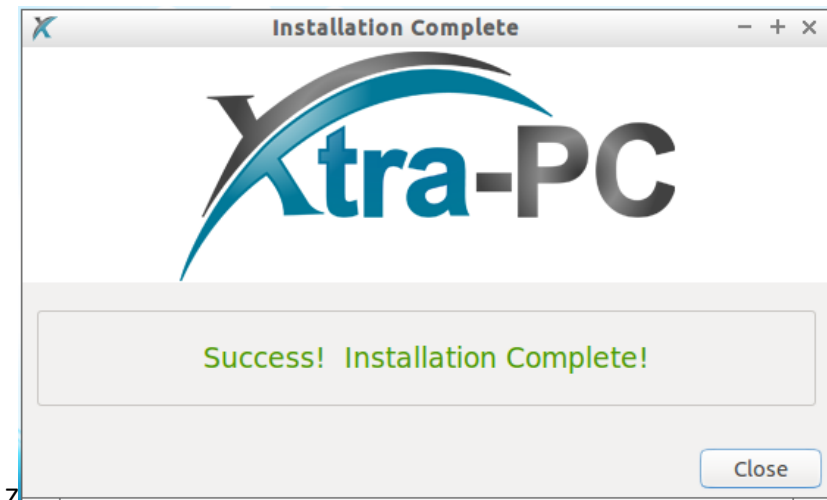


14. Click on the blue “Download Chrome” button. Ensure that the “32-bit .deb (For Debian/Ubuntu)” package is selected and then click the “Accept and Install” button. Click on "Keep" if you are prompted with the message "This type of file can harm your computer. Do you want to keep google-chrome...deb anyway?". The installer will automatically detect when the chrome install files downloaded and proceed to install Chrome.





15. When the installation of Chrome is complete, click the “Continue ->” button.
16. When the installation is complete, you will get confirmation that the install completed:



For more detailed steps, see the complete User Guide.