

Xtra-PC® User Guide

*Published: March 2016
Edition: 1*



Copyright © 2014-2016 Xtra-PC®. All Rights Reserved.

Table of Contents

Overview of Xtra-PC	3
Hardware Requirements	3
Initial Setup	4
Using your Xtra-PC.....	10
File Manager	10
Office Apps.....	10
Email	11
Facebook, Pandora, and Pinterest apps	11
Internet Access	11
Google Apps.....	11
Music and MP3 Player	11
DVD Player	11
Kindle Cloud Reader.....	12
Photos.....	12
Xtra-PC Settings	13
Printers.....	13
Useful Tools	13
Fix DVD Player Tool.....	13
Date and Time.....	14
Customizing your Desktop.....	14
Manually Setting your Monitor Display Settings	14
Multi-monitor Configuration	14
Network Connections	15
Power Management	15
Screensaver.....	15
User Accounts.....	15

Overview of Xtra-PC

Xtra-PC transforms your outdated PCs into highly useful, high performance computers. Xtra-PC is simple to install, giving you a usable PC within minutes. You don't have to be a computer expert to use it: you just load the DVD that contains the Xtra-PC software. Xtra-PC permanently installs on the hard drive, overriding the hard drive and eliminating any old files, giving you a completely new computer with an operating system built on the foundation of Linux. OpenOffice, media player software, and image software are included.

Wi-Fi and printers are easy to configure using Xtra-PC, and your new Xtra-PC screen looks and acts like other computers you're used to, making it very simple to use. Xtra-PC also eliminates those annoying pop-ups and warnings that interrupt your work.

Hardware Requirements

Component	Minimum requirement
Processor	700 MHz processor or higher. Xtra-PC requires your CPU to have Physical Address Extensions, or PAE. PAE is provided by Intel Pentium Pro and above CPUs, including all later Pentium-series processors (except most 400 MHz-bus versions of the Pentium M). Pentium M and Celeron M do not support PAE so Xtra-PC cannot load on systems with these processors.
RAM	512 MB (minimum) 2 GB (recommended)
USB port	System must have a USB 2.0 or 3.0 port
Network card	Network card. (Wi-Fi or Wired)
Graphics	VGA, DVI, or HDMI supported.

Initial Setup

NOTE: All applications are installed directly to the Xtra-PC USB device and not to any of your existing internal HDDs or other storage.

NOTE: During the setup process, the response time when you hit “Enter” can seem quite long. This is normal during the set up process.

1. Plug the Xtra-PC USB device into a USB port on your computer
2. Restart (reboot) your computer.

NOTE: If your computer loads as it always has and not to the Xtra-PC USB device, then you’ll need to change your computer settings so that it will boot (start) from the Xtra-PC USB. Please consult your computer’s documentation on how to change it to boot from a USB drive.

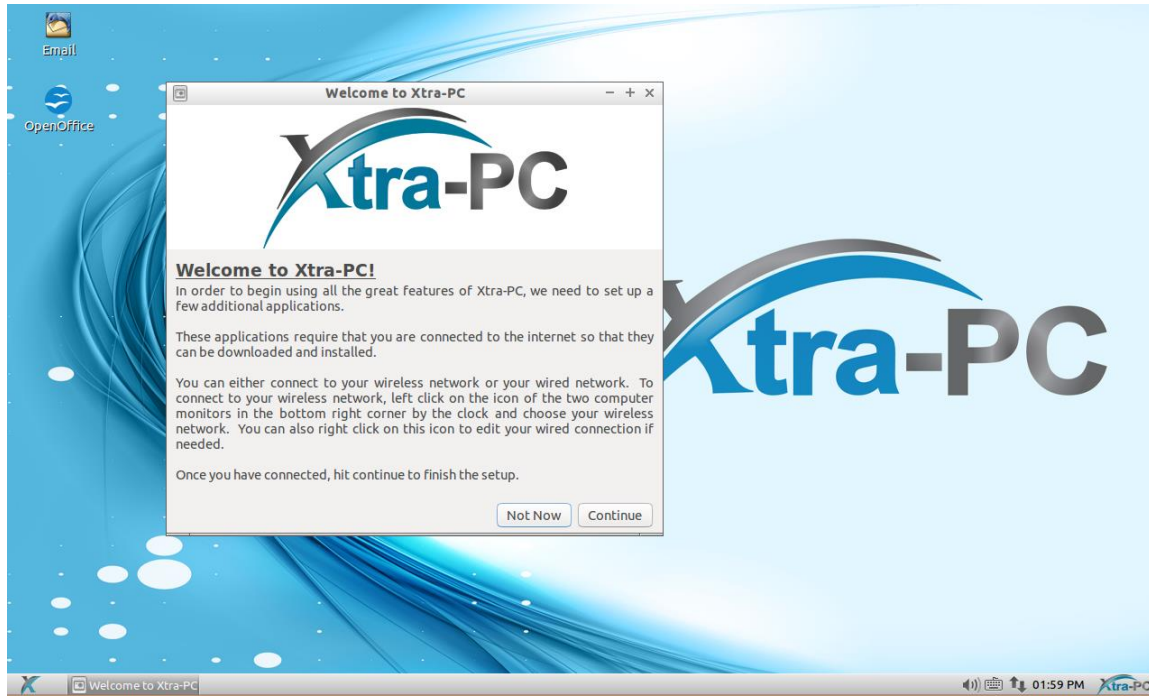
3. After it boots to the Xtra-PC USB device, you will be prompted to enter a password for the administrator account, and once you agree to the terms of the license agreement, check the box. Then click on “OK.” If you do not want to proceed, click on “Quit” and your computer will shut down.



4. A few moments after clicking “OK,” you will get the Xtra-PC login screen. Log in with the username “administrator” and the password you entered on the previous screen.



5. After logging in, you will see a welcome screen:



6. You must connect to your network for the installation to continue. You can either connect to your wireless network or your wired network. We don't recommend that you do both at the same time.


To connect to your wired network, follow these steps:

1. Plug your network cable into the network port on your computer.

2. Xtra-PC will detect the connection and will connect to your network. You'll know it's connected to your network when a message pops up saying that you're now connected. Also, the icon of the two computer monitors in the bottom right corner will change to an icon showing two arrows.

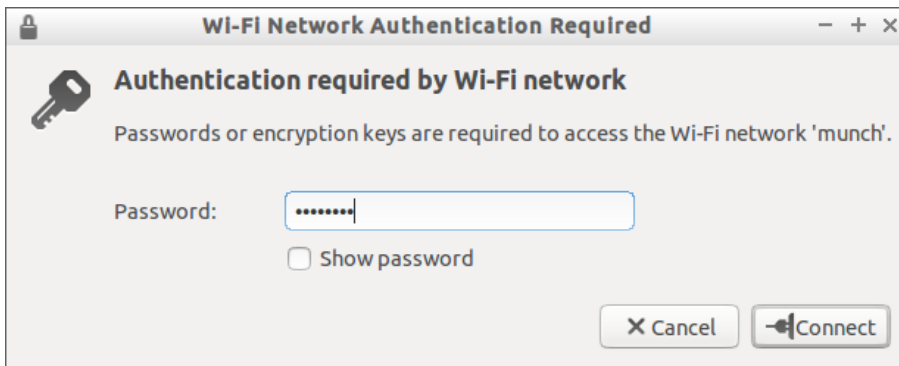
To connect to your wireless network, follow these steps:

1. Left click on the icon of the two computer monitors in the bottom right corner.
2. A menu will come up; about halfway down the menu, you will see a list of detected wireless networks. Left click on your network. If you don't see your wireless network, then you might have wireless turned off on your computer hardware. This will be a button on your keyboard or a switch or button

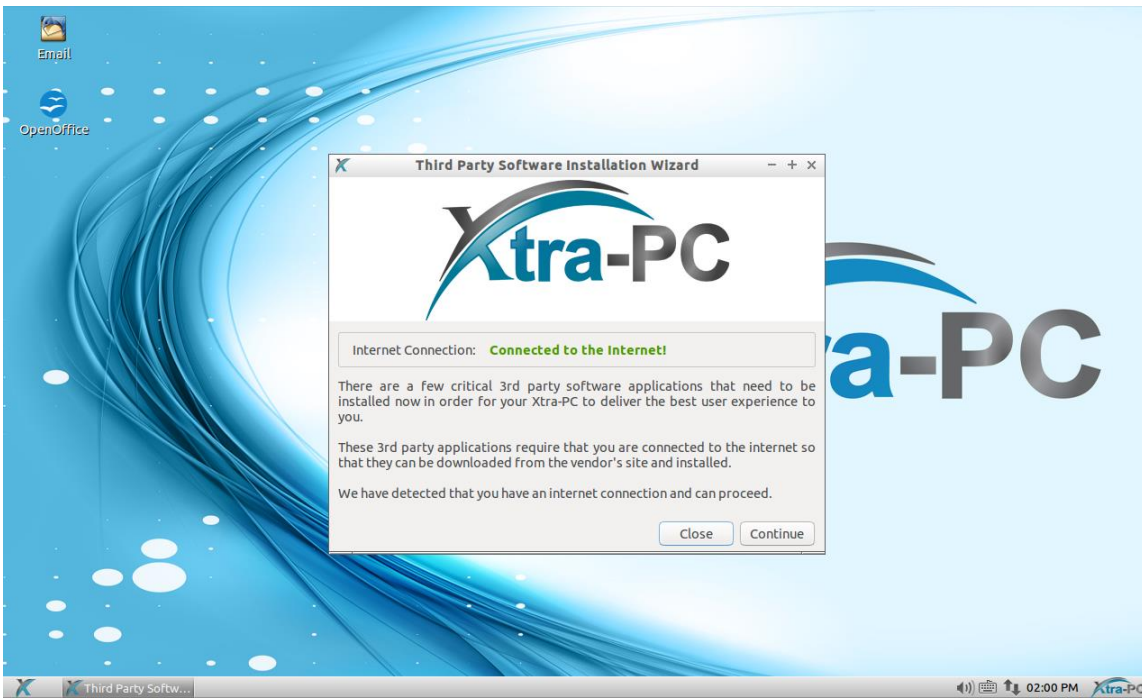
on the side of your computer that looks like this: 

If it's turned off (usually indicated by an orange light), turn it on (usually indicated by a blue light.) Then wait about thirty seconds and recheck the list of available wireless networks to see if your network now appears.

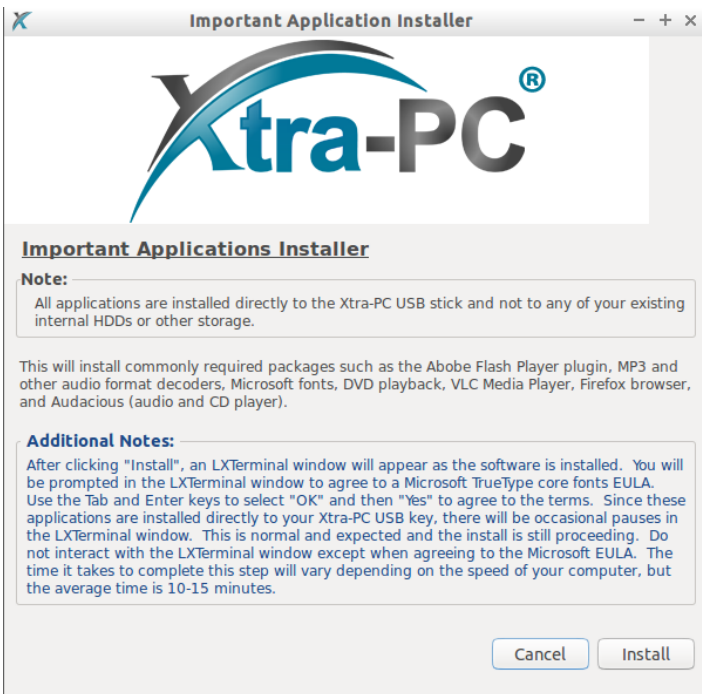
3. A screen will come up asking for a password. Enter your wireless password and left click on "Connect":



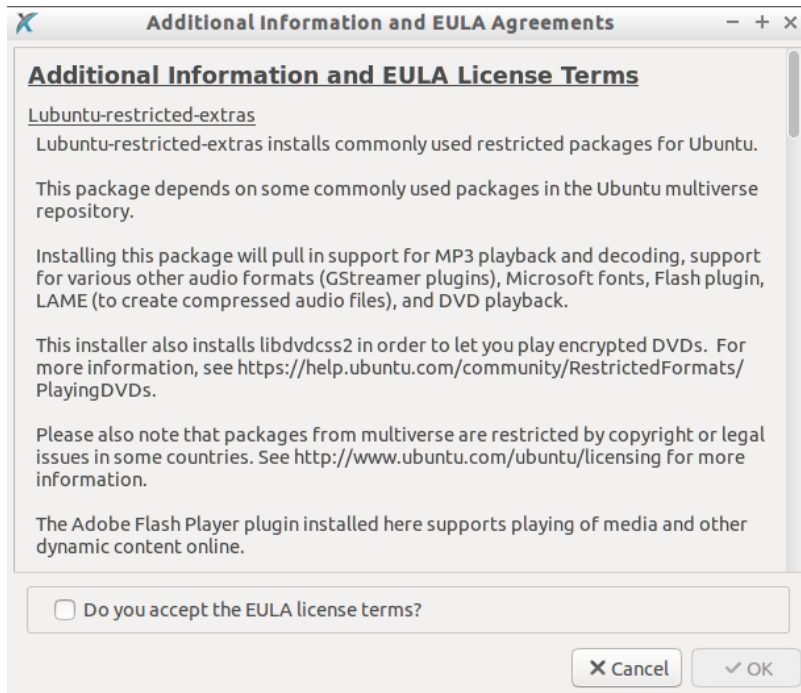
4. You will know you've connected to your wireless network when a message pops up saying that you're now connected. Also, the icon of the two computer monitors will change to an icon showing the signal strength indicator.
7. Once you are connected to your network, click "Continue".
8. You will see the Third Party Software Installation Wizard screen:



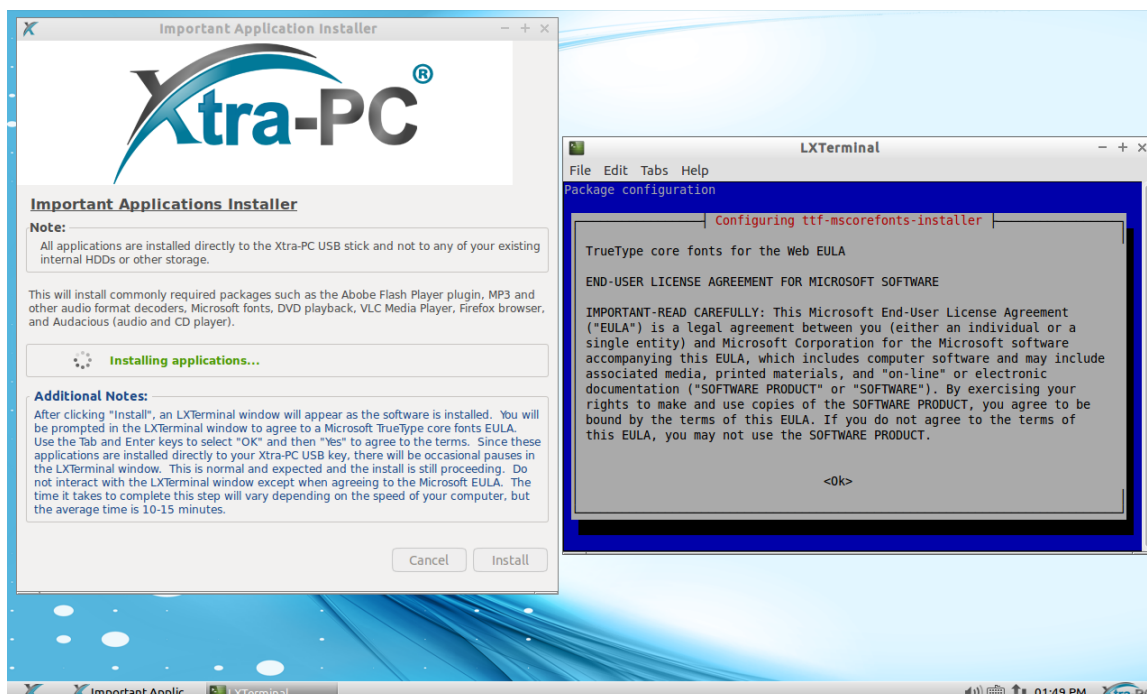
9. Click “Continue”. You will see the “Important Applications Installer” screen:



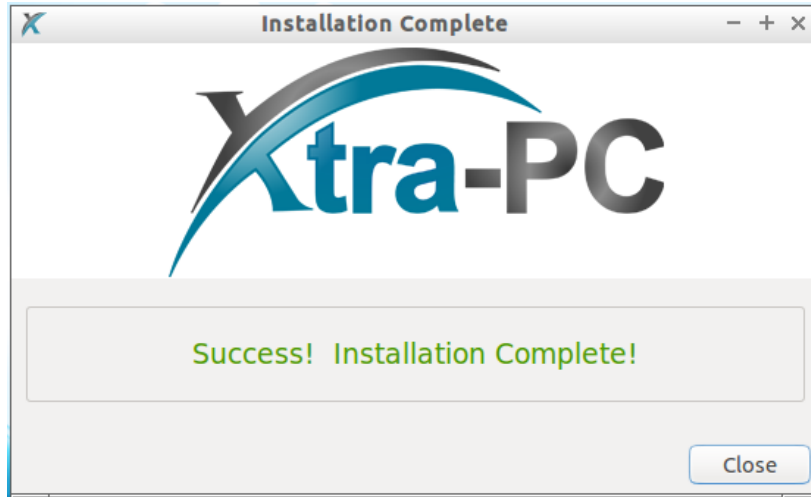
10. Click on “Install”. You will see the Additional Information and EULA agreements window. Click the box to agree to the EULA terms and then click “OK” to begin the install:



11. After clicking "OK", an LXTerminal window will appear as the software is installed. This window will be to the right of the Xtra-PC window as seen below. During the installation, you will be prompted in the LXTerminal window to agree to a Microsoft TrueType core fonts EULA. Use the Tab and Enter keys to select "OK" and then "Yes" to agree to the terms. Since these applications are installed directly to your Xtra-PC USB key, there will be occasional pauses in the terminal window. This is normal and expected, and the install is still proceeding. Do not interact with the LXTerminal window except when agreeing to the Microsoft EULA. The time it takes to complete this step will vary depending on the speed of your computer, but the average time is 10-15 minutes.



12. You will get confirmation that the install completed:

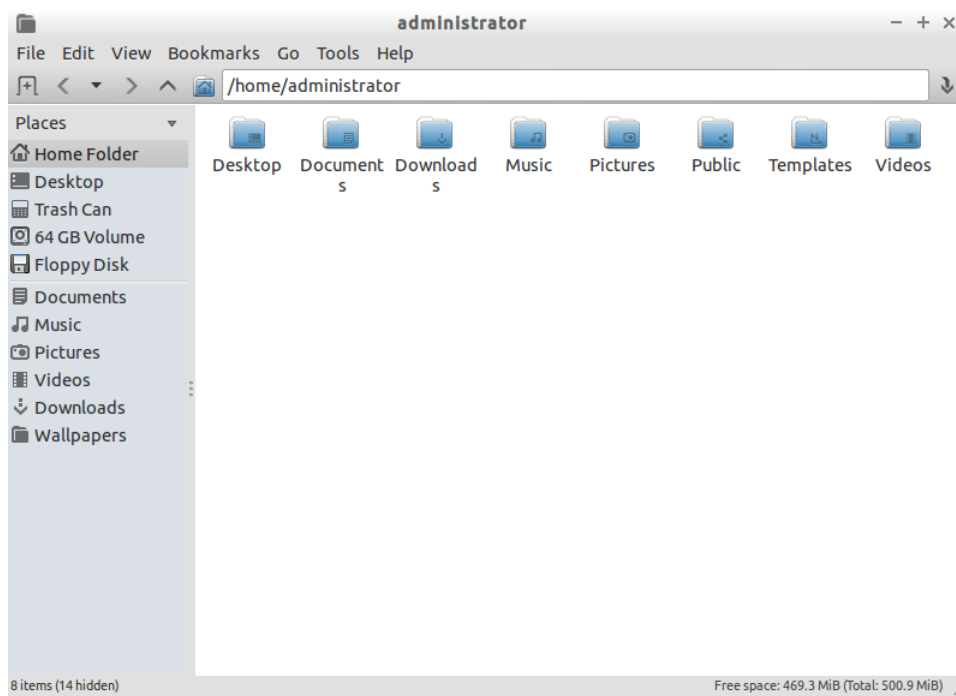


Using your Xtra-PC

NOTE: Do not remove the Xtra-PC USB device from your computer while it is running. Before removing, shut down Xtra-PC (Start -> Shutdown). Once the computer is shut down, the Xtra-PC USB device can be removed and used on another computer.

File Manager

This is the tool that allows you to manage all of your files such as documents, photos, spreadsheets, and more. For example, it can be used for reading and writing to USB sticks and pulling photos off of your phone. To open File Manager, left click on the Start menu (the blue X in the lower left corner), then go to “File Manager.”



An example of using File Manager would be accessing a USB drive that has your existing photos and documents on it. To do this, you would need to follow these steps:

1. Insert your USB stick into an available USB port on your computer.
2. You'll see a window that says “Removable medium is inserted.” Select “Open in File Manager” by clicking on it.
3. Click on the “OK” button. This will open File Manager, and you'll now see the files on your USB stick.

Office Apps

Xtra-PC has OpenOffice installed on it for word processing, spreadsheets, presentations, graphics, databases and more.

To use OpenOffice, double-click on the OpenOffice desktop shortcut. Or you can left click on the Start menu (the blue X in the lower left corner), then go to “Office,” then “OpenOffice.” The first time you use OpenOffice on your Xtra-PC, you will need to follow the OpenOffice steps. Once you’ve done this, you’re ready to use OpenOffice.

Email

To set up your email, double-click on the Email desktop shortcut. Or you can left click on the Start menu (the blue X in the lower left corner), then go to “Email and IM,” then “Email.” A Thunderbird window will come up and prompt you to set up your email. Once you’ve done this, your email will be ready to use.

Facebook, Pandora, and Pinterest apps

For your convenience, desktop shortcuts for these commonly used apps were created for you. To use any of these apps, simply double-click on the desktop shortcut of the app you want to use. Or you can access them through the Google Chrome web browser.

Internet Access

Xtra-PC uses the Google Chrome web browser for internet access. Use this to surf the web, access your Google apps, Google Store, Google Docs, Google Drive, and more.

Google Apps

To use Google Store, Google Docs, Google Drive, and other Google apps, click on the Google Chrome shortcut on your desktop, or go to the Start menu (the blue X in the lower left corner), then “Google Chrome.” Type <https://accounts.google.com> into the address or URL bar at the top of your screen. This will take you to the log-in screen for your Google account.

Music and MP3 Player

To play music CDs, MP3s and other audio formats, go to the Start menu (the blue X in the lower left corner), then “Media,” then “Music and MP3 Player.” A screen labelled “Audacious” will come up; either plug in a music CD or access your MP3s and other audio files from your removable device or wherever you have them stored. Once you’ve done this, you can listen to your music.

DVD Player

To watch a DVD, insert the DVD into the DVD drive. Then follow these steps:

1. Go to the Start menu (the blue X in the lower left corner), then “Media,” then “DVD player.” This will launch the VLC media player.
2. On the top menu, click on “View,” then “Playlist.” In the left-hand side of the Playlist menu, scroll down until you see “Discs” and click on it. Your movie title should appear in the window on the right.
3. Double-click on this title, and your movie will begin to play.

Kindle Cloud Reader

To access your Kindle eBooks, double-click on the Kindle Cloud Reader desktop shortcut. You'll be prompted to enter your Amazon account email address and password. Once you've signed in, your Kindle eBooks will be available to you.

Photos

To view any photos you have on your Xtra-PC, simply launch the Photo Viewer by going to the Start menu (the blue X in the lower left corner), then "Media," then "Photo Viewer." A window named "Mirage" will open. To view your photos, use the File menu.

To run your photos as a continuous slide show, open "Photo Viewer" as just described. Then go to "Edit" on the top toolbar, then "Preferences...," then to the "Navigation" tab. Change "wrap around imagelist" to "Yes." Then click on the Close button, then go to "Go" in the top toolbar, then "Start Slideshow."

Xtra-PC Settings

You can customize the look and feel of your Xtra-PC by using the tools under the Local Administration Menu.

Printers

To add a printer for use in Xtra-PC, go to the Start menu (the blue X in the lower left corner), then “Local Administration,” then “Printers.”

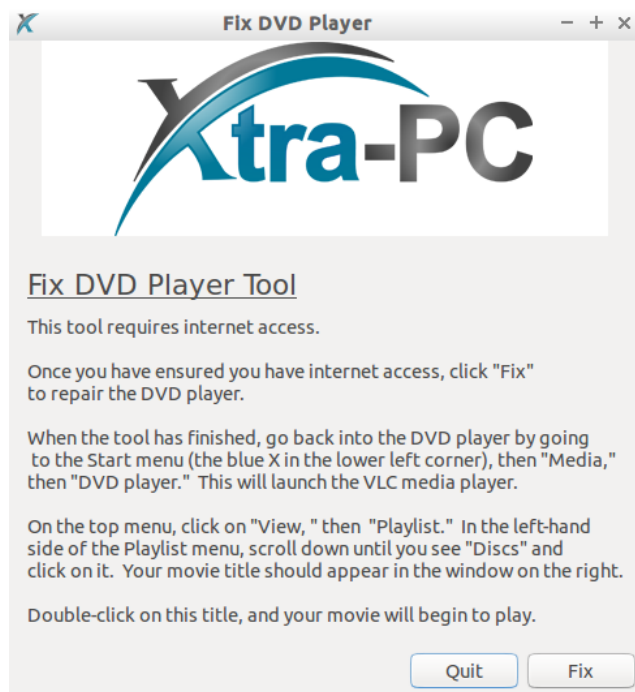
Select “Printer Manager” [go to the Start menu (the blue X in the lower left corner), then “Local Administration,” then “Printer Manager.”] Click on “Add,” then follow the prompts to add your printer. Your printer will then be ready to use.

Useful Tools

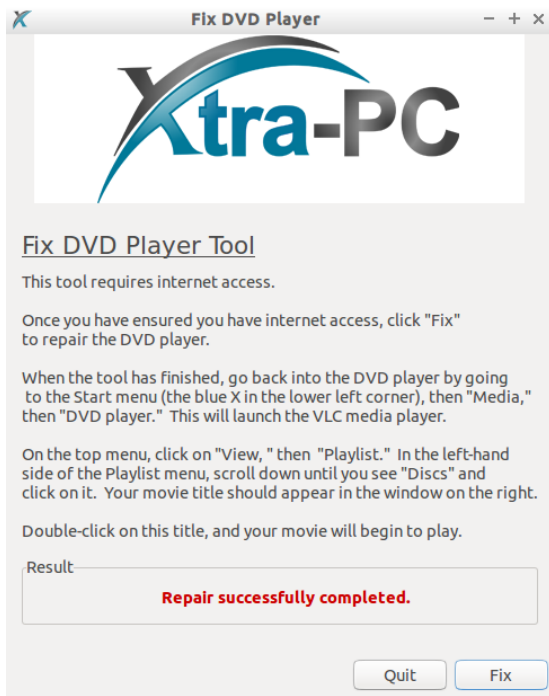
Xtra-PC comes with tools that can be used to fix the DVD player playback or restore the default desktop icons. To use one of these tools, go to the Start menu (the blue X in the lower left corner), then “Local Administration,” then “Useful Tools.”

Fix DVD Player Tool

If there are issues with DVD playback with the DVD player, select “Fix DVD Player.” You will see a window as shown below. Before clicking on “Fix,” ensure there is an active internet connection as the tool requires access to the internet.



The tool will run for a moment, and when it is complete, you will see the following:



Date and Time

To set the date and time, go to the Start menu (the blue X in the lower left corner), then “Local Administration,” then “Date & Time.”

Customizing your Desktop

To customize your desktop, (to change your wallpaper, for example) go to the Start menu (the blue X in the lower left corner), then “Local Administration,” then “Desktop Preferences.” Use the menu that comes up to choose how you want your desktop to look.

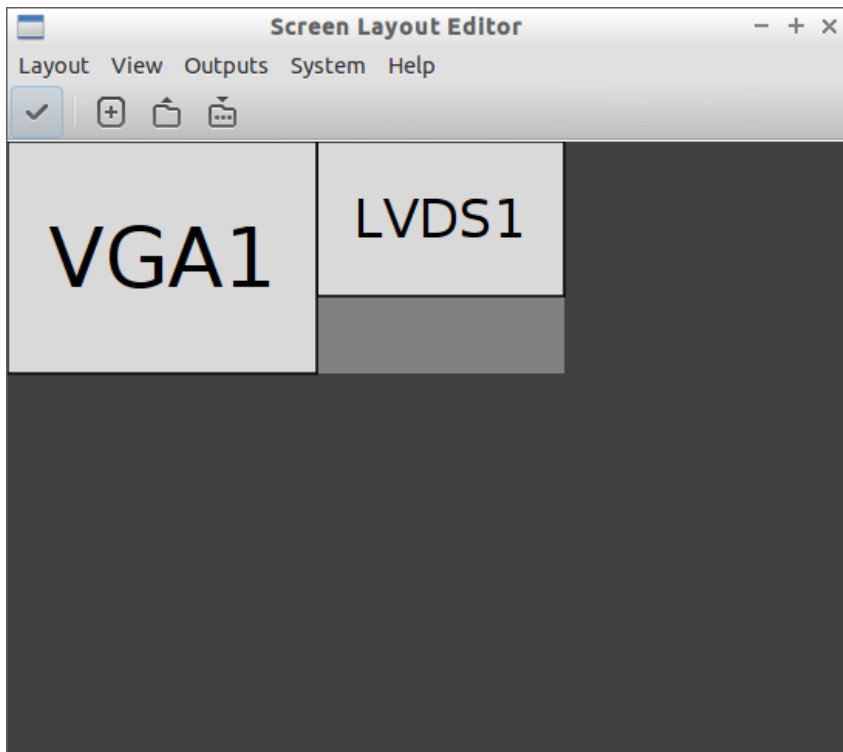
Manually Setting your Monitor Display Settings

Xtra-PC is set up so that it will automatically pick the best resolution for your monitor. However, there are times when you may want to change your monitor resolution and refresh rate. To do this, go to the Start menu (the blue X in the lower left corner), then “Local Administration,” then “Monitor Resolution Settings.” A “Display Settings” window will appear. Select your desired Resolution and/or Refresh Rate, then click “Apply.”

Multi-monitor Configuration

Xtra-PC comes with a tool to help you set up and adjust for situations where you have two or more monitors. To use this tool, go to the Start menu (the blue X in the lower left corner,) then “Local Administration,” then “Multi-monitor configuration.” A “Screen Layout Editor” window will open. The default layout for multi-monitors is set up as mirrored monitors, meaning that both monitors show the same image. To change this, for example, to set up your desktop to extend across both of your monitors, drag and drop the monitor you want on your right to the

right side of the “Screen Layout Editor Window.” Here’s an example of a VGA monitor being the left monitor and a laptop monitor being the right monitor:



Once you’ve done the above step, click on the button that has a checkmark on it. This will apply your changes to your monitors.

Network Connections

To manage and change your network connection settings, go to the Start menu (the blue X in the lower left corner), then “Local Administration,” then “Network Connections.”

Power Management

To manage your Xtra-PC’s power settings such as Display Brightness, Sleep, and others, go to the Start menu (the blue X in the lower left corner), then “Local Administration,” then “Power Manager.” You will then be allowed to select from different power settings.

Screensaver

To set your Screensaver, go to the Start menu (the blue X in the lower left corner), then “Local Administration,” then “Screensaver.” You will then be allowed to select from different Screensaver options.

User Accounts

Xtra-PC comes with an administrator user. If you want to change the administrator password or add new users to your Xtra-PC, go to the Start menu (the blue X in the lower left corner), then “Local Administration,” then “User

Accounts.” A User Accounts window will open. Click on “Unlock” in the upper right corner. You will be prompted to enter the administrator password that you created when you first installed Xtra-PC.

