

Xtra-PC® User Guide

*Published: April 2017
Edition: 2
Xtra-PC 4.0*



Copyright © 2014-2017 Xtra-PC®. All Rights Reserved.

Table of Contents

Overview of Xtra-PC	4
Hardware Requirements.....	4
Initial Setup.....	5
Using your Xtra-PC.....	13
File Manager	13
Office Apps.....	13
Email	14
Facebook, Pandora, and Pinterest apps	14
Internet Access	14
Google Apps.....	14
Music and MP3 Player	14
Kindle Cloud Reader.....	14
Photos.....	14
Xtra-PC Settings	16
Printers.....	16
Useful Tools	16
Generate Support Ticket Tool.....	16
Xtra-PC Initial Install Wizard Tool	17
Bluetooth Manager.....	18
Customizing your Desktop.....	18
Disk Manager	18
Keyboard and Mouse.....	18
Language Support	18
Manually Setting your Monitor Display Settings	18
Multi-monitor Configuration	19
Network Connections	19
Network Settings	19
Personalize Desktop.....	19
Power Management	20
Screensaver.....	20
Synaptic Package Manager	20

System Information	20
Time and Date.....	20
Users and Group Accounts	20
Appendix A - Restarting to Xtra-PC from Windows	21

Overview of Xtra-PC

Xtra-PC is a flash drive stick that you insert into an available USB port on your PC. Built on the proven foundation of Linux, it bypasses the old, slow, bloated Windows operating system to make your PC into a blazing fast, high performance PC with a new, simple to use, operating system that has the familiar look and feel of your Windows PC. It even works with missing or faulty hard drives. Since it runs on a USB stick, your existing computer is not altered and you'll have access to all of your old files. You simply plug it in, restart your PC to boot into USB, and start using Xtra-PC!

Xtra-PC is easy to use and made for speed.

Hardware Requirements

Component	Minimum requirement
Processor	700 MHz processor or higher. Xtra-PC requires your CPU to have Physical Address Extensions, or PAE. PAE is provided by Intel Pentium Pro and above CPUs, including all later Pentium-series processors (except most 400 MHz-bus versions of the Pentium M). Pentium M and Celeron M do not support PAE so Xtra-PC cannot load on systems with these processors.
RAM	512 MB (minimum) 2 GB (recommended)
USB port	System must have a USB 2.0 or 3.0 port
Network card	Network card. (Wi-Fi or Wired)
Graphics	VGA, DVI, or HDMI supported.

Initial Setup

NOTE: All applications are installed directly to the Xtra-PC USB device and not to any of your existing internal HDDs or other storage.

1. Plug the Xtra-PC USB device into a USB port on your computer
2. Ensure that Secure Boot is disabled in your computer's BIOS/UEFI

NOTE: If you are unsure if Secure Boot is disabled, run the DoubleClickToUseXtraPC.exe tool that is on your Xtra-PC drive. See [Appendix B – How to Disable Secure Boot](#) for more details.

3. Restart (reboot) your computer or restart to Xtra-PC directly from Windows (See [Appendix A - Restarting to Xtra-PC from Windows](#)) .
4. When the computer restarts and you see the initial start-up screen for your computer, start tapping the boot menu key for your computer.

NOTE: If your computer loads as it always has and not to the Xtra-PC USB device, then you did not press the boot menu key in time or it was not available on boot. In this situation, follow the instructions in [Appendix A](#) that explains how to use the DoubleClickToUseXtraPC tool to help you boot to the Xtra-PC device.

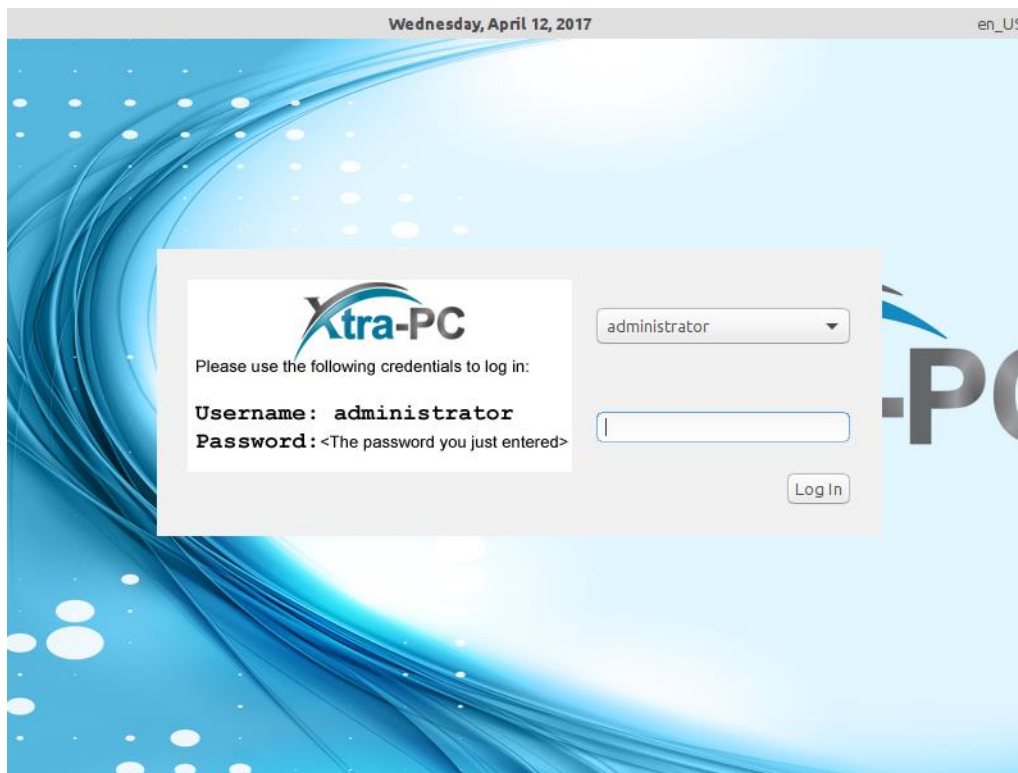
5. When the boot menu appears, select the USB to boot to the Xtra-PC device.

NOTE: If you select the Xtra-PC device and you get an error message about “Access Denied” or “Authentication Issue”, this means that Secure Boot is still enabled in the BIOS/UEFI and needs to be disabled before booting to Xtra-PC. See [Appendix B-How to Disable Secure Boot](#) for further explanation and steps to take to disable Secure Boot.

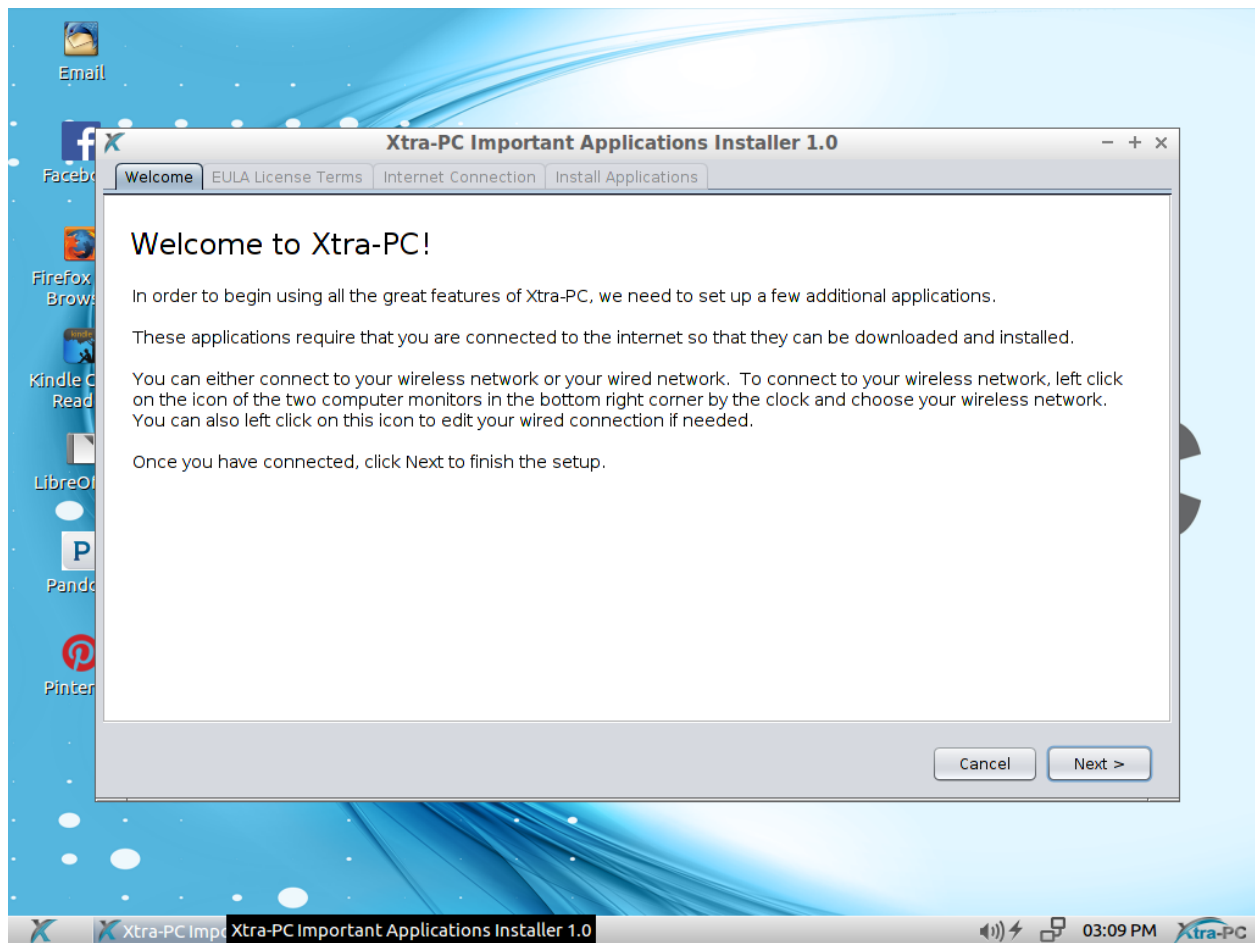
6. After it boots to the Xtra-PC USB device, you will be prompted to enter a password for the administrator account, and once you agree to the terms of the license agreement, check the box. Then click on “OK.” If you do not want to proceed, click on “Quit” and your computer will shut down.



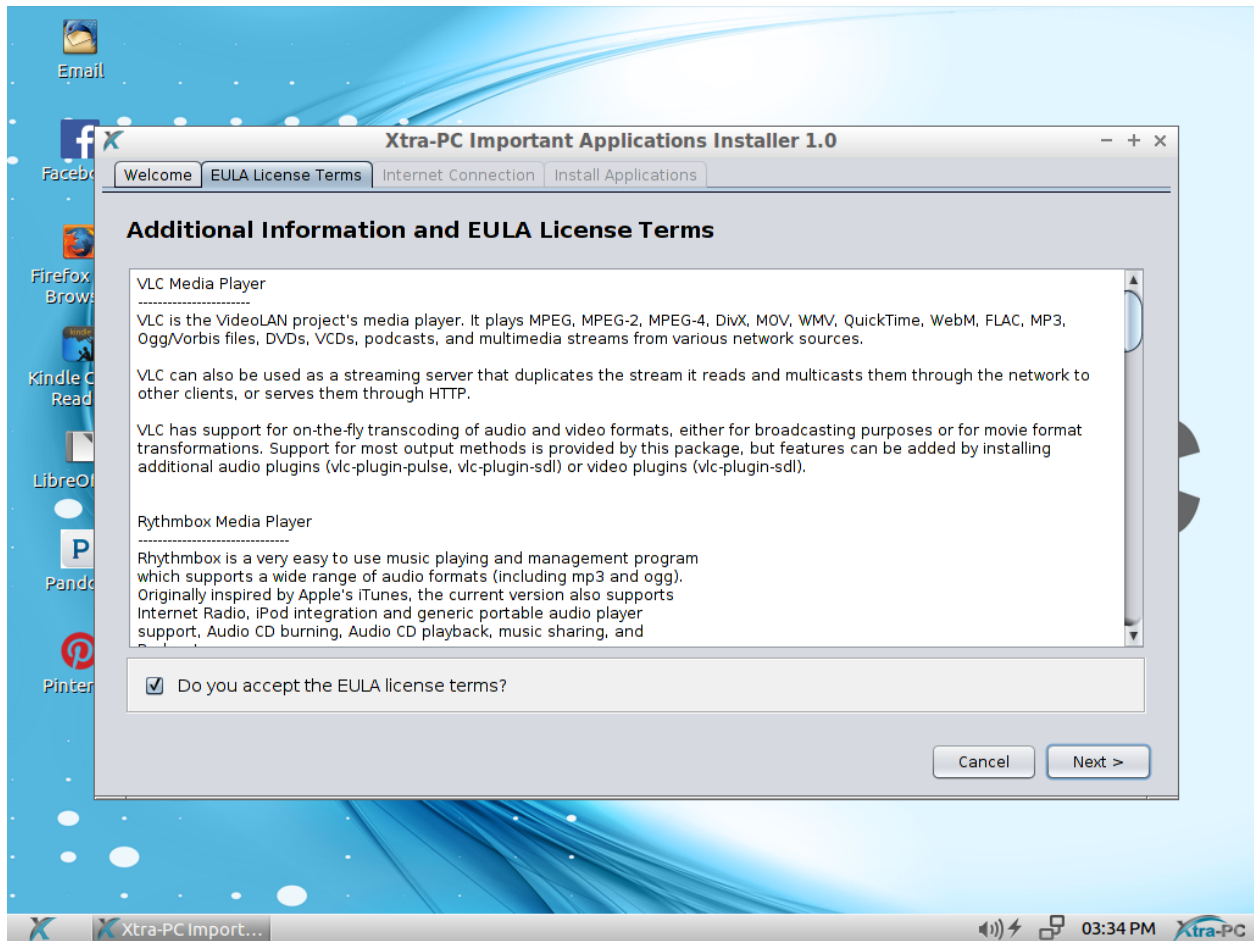
7. A few moments after clicking "OK," you will get the Xtra-PC login screen. Log in with the username "administrator" and the password you entered on the previous screen.



8. After logging in, you will see a welcome screen:



9. Click the "Next" button. You will see the Additional Information and EULA License Terms window. Click the box to agree to the EULA terms and then click "Next" to go to the Internet Connection window.




10. You must connect to your network for the installation to continue. You can either connect to your wireless network or your wired network. We don't recommend that you do both at the same time.

To connect to your wired network, follow these steps:

1. Plug your network cable into the network port on your computer.
2. Xtra-PC will detect the connection and will connect to your network. You'll know it's connected to your network when a message pops up saying that you're now connected. Also, the icon of the two computer monitors in the bottom right corner will change to an icon showing two arrows.

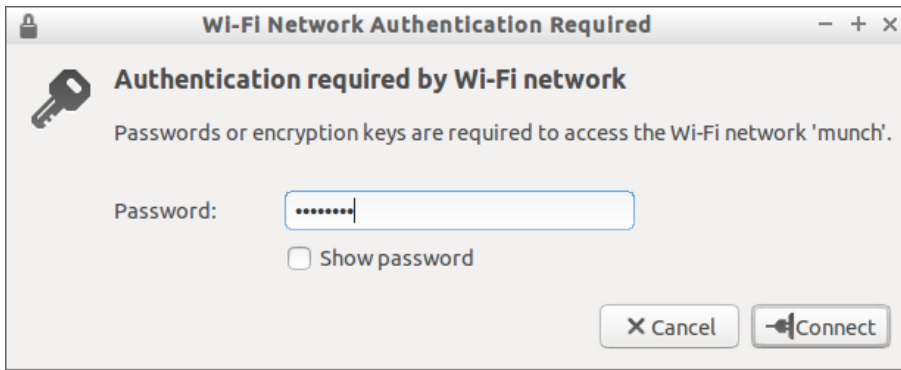
To connect to your wireless network, follow these steps:

1. Left click on the icon of the two computer monitors in the bottom right corner.
2. A menu will come up; about halfway down the menu, you will see a list of detected wireless networks. Left click on your network. If you don't see your wireless network, then you might have wireless turned off on your computer hardware. This will be a button on your keyboard or a switch or button

on the side of your computer that looks like this: 

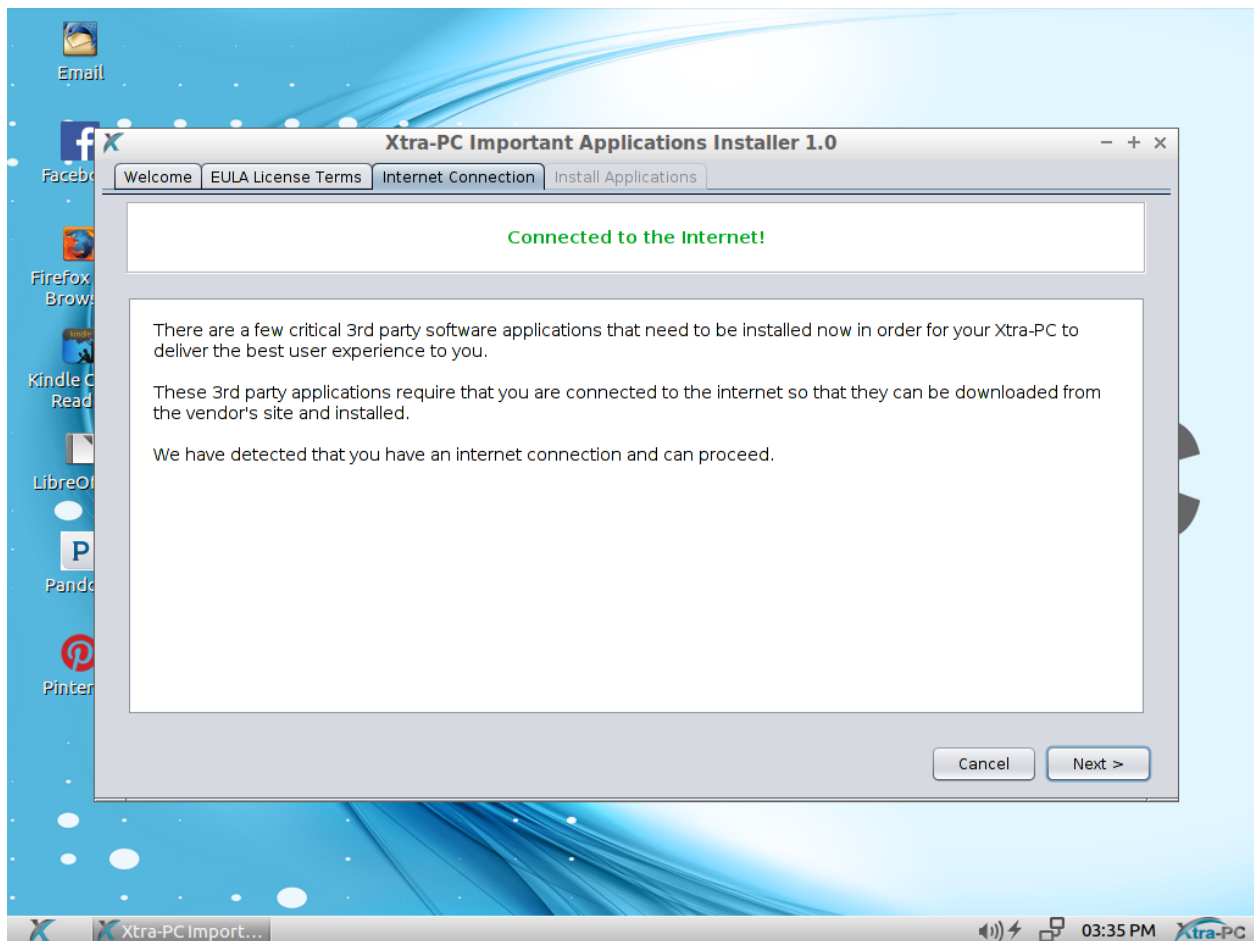
If it's turned off (usually indicated by an orange light), turn it on (usually indicated by a blue light.) Then wait about thirty seconds and recheck the list of available wireless networks to see if your network now appears.

3. A screen will come up asking for a password. Enter your wireless password and left click on "Connect":

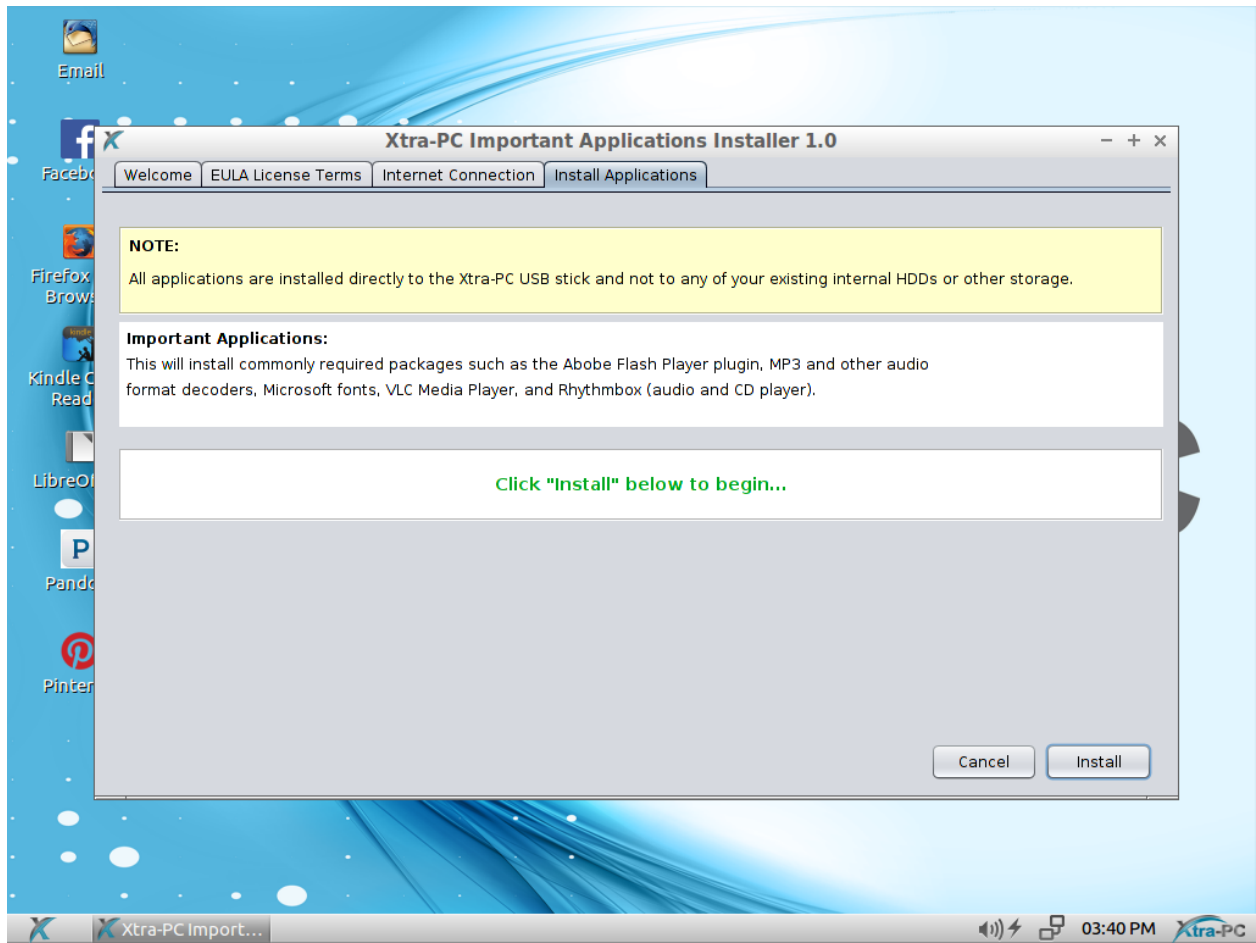


4. You will know you've connected to your wireless network when a message pops up saying that you're now connected. Also, the icon of the two computer monitors will change to an icon showing the signal strength indicator.

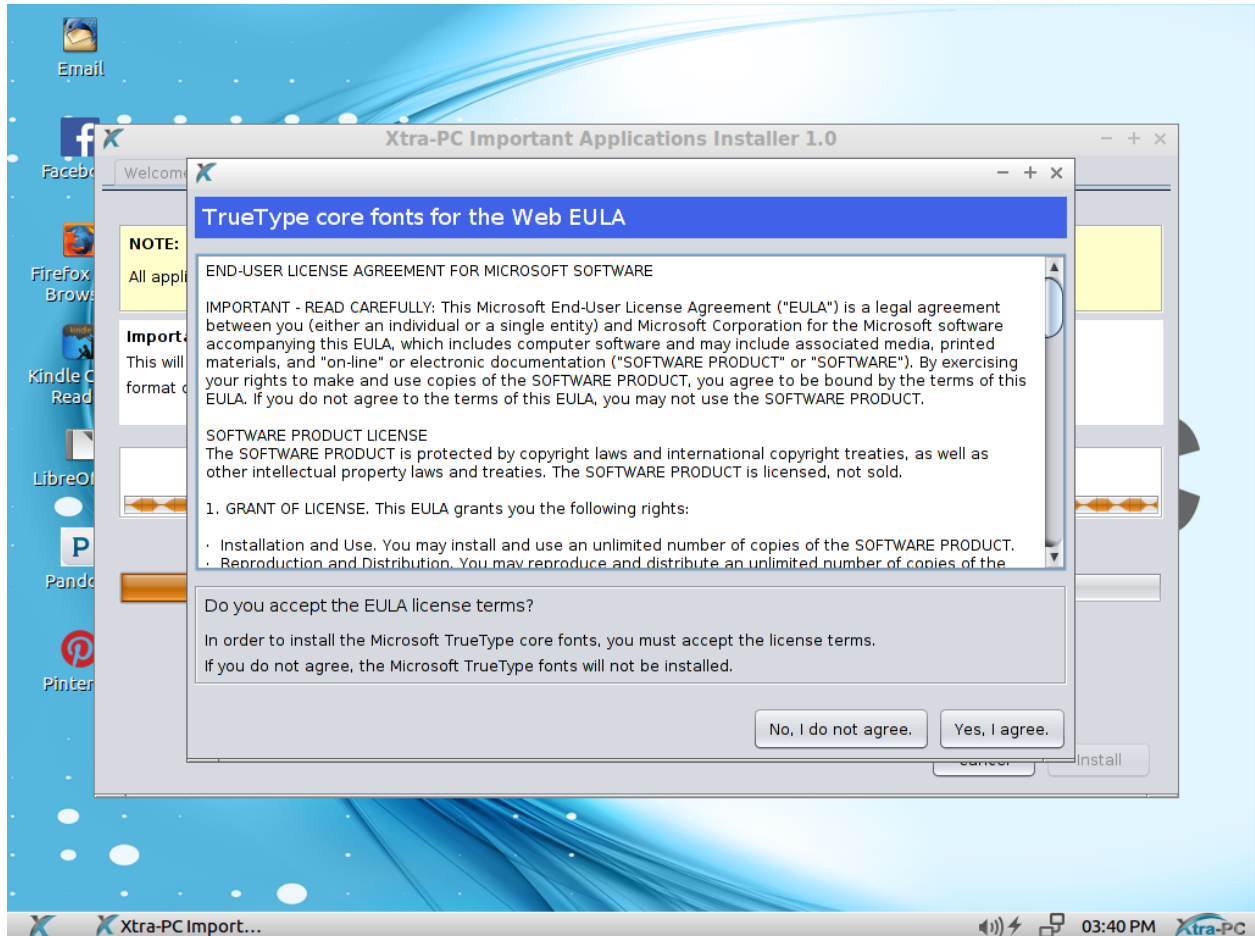
11. Once you are connected to your network, click "Next".



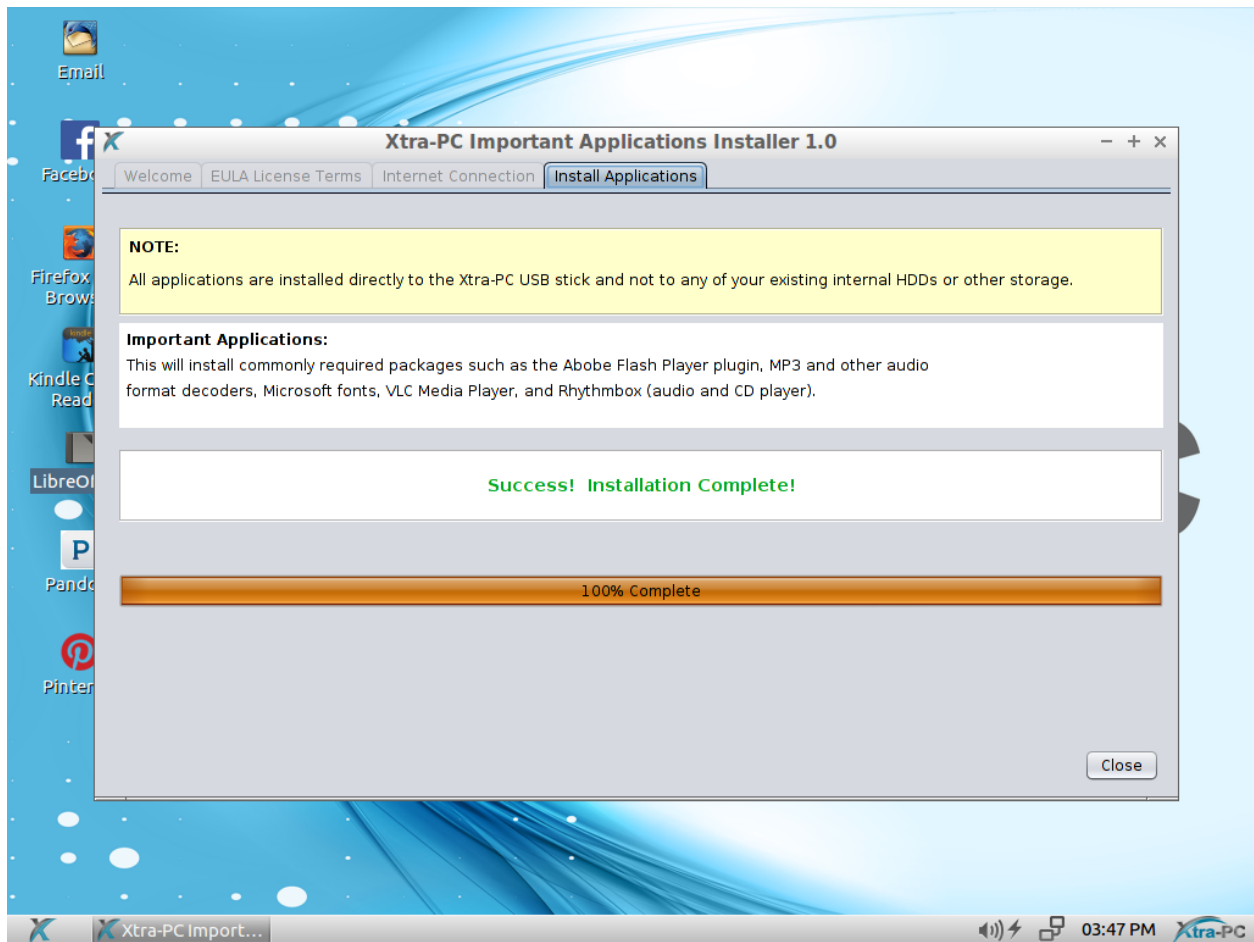
12. Click "Install" to begin the install.



13. During the install process, you will be prompted to agree to a Microsoft TrueType core fonts EULA. If you want to install Microsoft TrueType core fonts, click on “Yes, I agree”. If you do not want to install Microsoft TrueType core fonts, click on “No, I do not agree”. Microsoft TrueType core fonts are Andale Mono, Arial, Arial Black, Comic Sans MS, Courier New, Georgia, Impact, Times New Roman, Trebuchet MS, Verdana, Webdings.



14. You will get confirmation that the install completed:

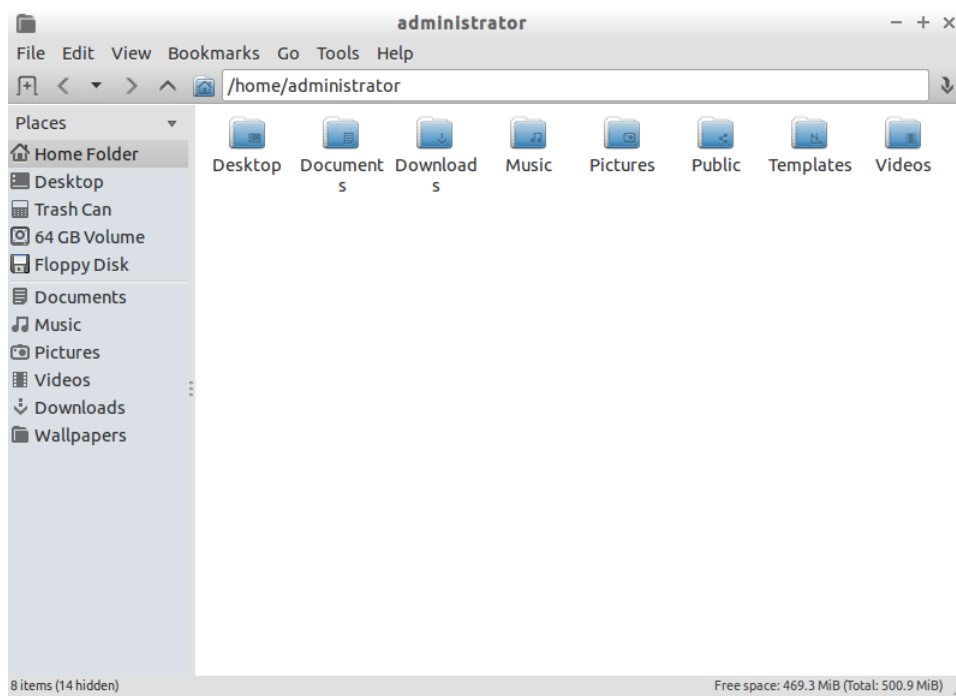


Using your Xtra-PC

NOTE: Do not remove the Xtra-PC USB device from your computer while it is running. Before removing, shut down Xtra-PC (Start -> Shutdown). Once the computer is shut down, the Xtra-PC USB device can be removed and used on another computer.

File Manager

This is the tool that allows you to manage all of your files such as documents, photos, spreadsheets, and more. For example, it can be used for reading and writing to USB sticks and pulling photos off of your phone. To open File Manager, left click on the Start menu (the blue X in the lower left corner), then go to “File Manager.”



An example of using File Manager would be accessing a USB drive that has your existing photos and documents on it. To do this, you would need to follow these steps:

1. Insert your USB stick into an available USB port on your computer.
2. You'll see a window that says "Removable medium is inserted." Select "Open in File Manager" by clicking on it.
3. Click on the "OK" button. This will open File Manager, and you'll now see the files on your USB stick.

Office Apps

Xtra-PC has LibreOffice installed on it for word processing, spreadsheets, presentations, graphics, databases and more.

To use LibreOffice, double-click on the LibreOffice desktop shortcut. Or you can left click on the Start menu (the blue X in the lower left corner), then go to “Office,” then “LibreOffice.”

Email

To set up your email, double-click on the Email desktop shortcut. Or you can left click on the Start menu (the blue X in the lower left corner), then go to “Internet and Email,” then “Thunderbird Mail.” A Thunderbird window will come up and prompt you to set up your email. Once you’ve done this, your email will be ready to use.

Facebook, Pandora, and Pinterest apps

For your convenience, desktop shortcuts for these commonly used apps were created for you. To use any of these apps, simply double-click on the desktop shortcut of the app you want to use. Or you can access them through the Firefox web browser.

Internet Access

Xtra-PC uses the Firefox web browser for internet access. To use Firefox, click on the Firefox Web Browser shortcut on your desktop, or go to the Start menu (the blue X in the lower left corner), then go to “Internet and Email,” then “Firefox Web Browser.”

Google Apps

To use Google Store, Google Docs, Google Drive, and other Google apps, click on the Firefox Web Browser shortcut on your desktop, or go to the Start menu (the blue X in the lower left corner), then go to “Internet and Email,” then “Firefox Web Browser.” Type <https://accounts.google.com> into the address or URL bar at the top of your screen. This will take you to the log-in screen for your Google account.

Music and MP3 Player

To play music CDs, MP3s and other audio formats, go to the Start menu (the blue X in the lower left corner), then “Media,” then “Rhythmbox.” A screen labelled “Rythmbox” will come up; either plug in a music CD or access your MP3s and other audio files from your removable device or wherever you have them stored. Once you’ve done this, you can listen to your music.

Kindle Cloud Reader

To access your Kindle eBooks, double-click on the Kindle Cloud Reader desktop shortcut. You’ll be prompted to enter your Amazon account email address and password. Once you’ve signed in, your Kindle eBooks will be available to you.

Photos

To view any photos you have on your Xtra-PC, simply launch the Photo Viewer by going to the Start menu (the blue X in the lower left corner), then “Graphics,” then “Photo Viewer.” A window named “Mirage” will open. To view your photos, use the File menu.

To run your photos as a continuous slide show, open "Photo Viewer" as just described. Then go to "Edit" on the top toolbar, then "Preferences...", then to the "Navigation" tab. Change "wrap around imagelist" to "Yes." Then click on the Close button, then go to "Go" in the top toolbar, then "Start Slideshow."

Xtra-PC Settings

You can customize the look and feel of your Xtra-PC by using the tools under the Local Administration Menu.

Printers

To add a printer for use in Xtra-PC, go to the Start menu (the blue X in the lower left corner), then “Local Administration,” then “Printers,” then “Printer Manager.”

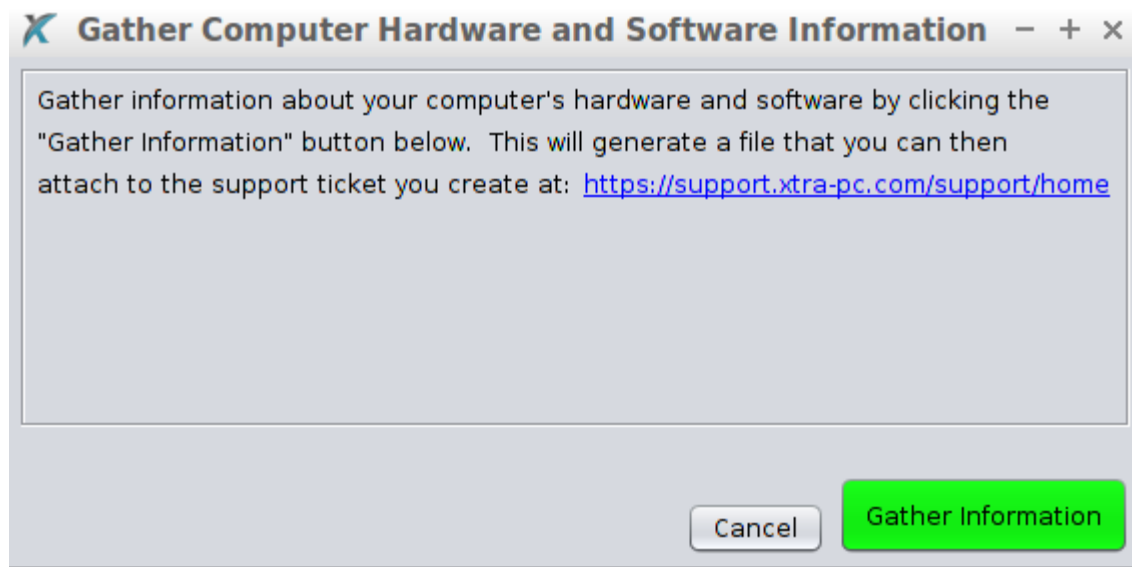
In Printer Manager, click on “Add,” then follow the prompts to add your printer. Your printer will then be ready to use.

Useful Tools

Xtra-PC comes with a couple tools that can be used to gather information about your computer or run the initial install wizard again. To use one of these tools, go to the Start menu (the blue X in the lower left corner), then “Local Administration,” then “Useful Tools.”

Generate Support Ticket Tool

When you start the “Generate Support Ticket” tool, you will see the screen:

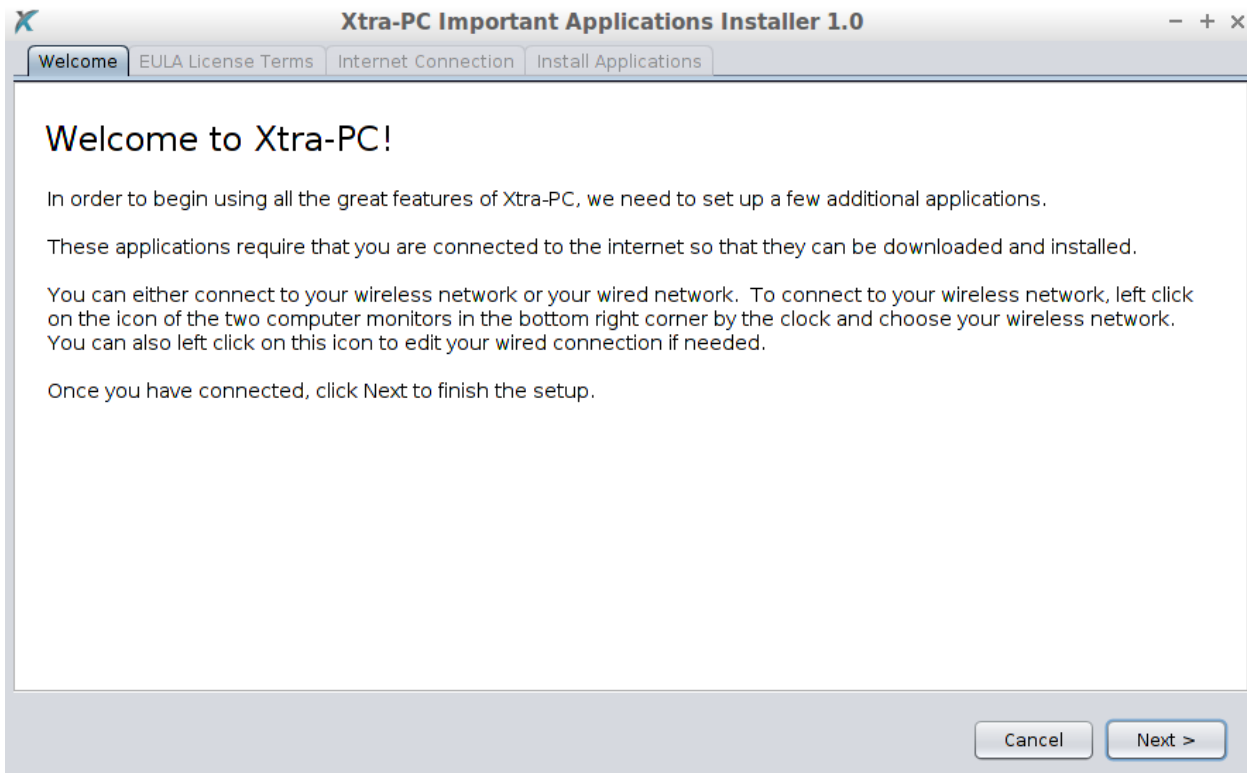


Simply click the “Gather Information” button so start. Once done, it will place a file on your desktop that you can open and view or send to Xtra-PC support:



Xtra-PC Initial Install Wizard Tool

This will run the initial install wizard that ran when you used Xtra-PC for the first time. This will install commonly required packages such as the Adobe Flash Player plugin, MP3 and other audio format decoders, Microsoft fonts, VLC Media Player, and Rhythmbox (audio and CD player).



Bluetooth Manager

To view and connect to your Bluetooth devices, go to the Start menu (the blue X in the lower left corner), then “Local Administration,” then “Blue Manager.” Follow the onscreen instructions to pair your Xtra-PC and Bluetooth devices.

If your computer does not have Bluetooth capabilities, the Bluetooth Manager will not be able to run. Only computers that are Bluetooth enabled, can use Bluetooth Manager.

Customizing your Desktop

To customize your desktop, (to change your wallpaper, for example) go to the Start menu (the blue X in the lower left corner), then “Local Administration,” then “Desktop Preferences.” Use the menu that comes up to choose how you want your desktop to look.

Disk Manager

Disk Manager enables you to see all the local and removable storage devices on your computer. Caution should be used when using this tool as it can modify and format your existing drives if used improperly. If ever in doubt, ask Xtra-PC support for assistance with this tool at <https://support.xtra-pc.com>.

To use Disk Manager, go to the Start menu (the blue X in the lower left corner), then “Local Administration,” then “Disk Manager.”

Keyboard and Mouse

To adjust your mouse and keyboard sensitivity, go to the Start menu (the blue X in the lower left corner), then “Local Administration,” then “Keyboard and Mouse.”

Language Support

To change the default language of your Xtra-PC from English to something else, go to the Start menu (the blue X in the lower left corner), then “Local Administration,” then “Language Support.”

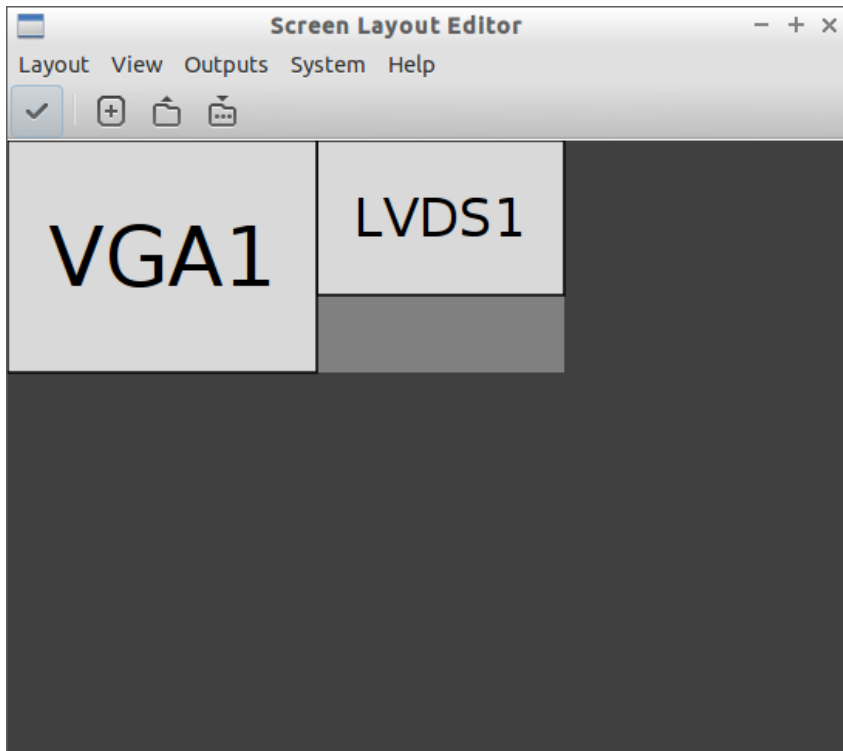
For a step-by-step guide on how to change the default language and keyboard layout to another language, please go to <https://support.xtra-pc.com/solution/articles/19000015448-how-do-i-change-the-default-language-and-keyboard-layout-to-another-language->.

Manually Setting your Monitor Display Settings

Xtra-PC is set up so that it will automatically pick the best resolution for your monitor. However, there are times when you may want to change your monitor resolution and refresh rate. To do this, go to the Start menu (the blue X in the lower left corner), then “Local Administration,” then “Monitor Settings.” A “Display Settings” window will appear. Select your desired Resolution and/or Refresh Rate, then click “Apply.”

Multi-monitor Configuration

Xtra-PC comes with a tool to help you set up and adjust for situations where you have two or more monitors. To use this tool, go to the Start menu (the blue X in the lower left corner,) then “Local Administration,” then “Multi-monitor Configuration.” A “Screen Layout Editor” window will open. The default layout for multi-monitors is set up as mirrored monitors, meaning that both monitors show the same image. To change this, for example, to set up your desktop to extend across both of your monitors, drag and drop the monitor you want on your right to the right side of the “Screen Layout Editor Window.” Here’s an example of a VGA monitor being the left monitor and a laptop monitor being the right monitor:



Once you’ve done the above step, click on the button that has a checkmark on it. This will apply your changes to your monitors.

Network Connections

To manage and change your network connection settings, go to the Start menu (the blue X in the lower left corner), then “Local Administration,” then “Network Connections.”

Network Settings

To change your Xtra-PC’s host name, DNS, and host file, go to the Start menu (the blue X in the lower left corner), then “Local Administration,” then “Network Settings.”

Personalize Desktop

To customize the look and feel of your Xtra-PC (to change the color scheme, for example), go to the Start menu (the blue X in the lower left corner), then “Local Administration,” then “Personalize Desktop.”

Power Management

To manage your Xtra-PC's power settings such as Display Brightness, Sleep, and others, go to the Start menu (the blue X in the lower left corner), then "Local Administration," then "Power Manager." You will then be allowed to select from different power settings.

Screensaver

To set your Screensaver, go to the Start menu (the blue X in the lower left corner), then "Local Administration," then "Screensaver." You will then be allowed to select from different Screensaver options.

Synaptic Package Manager

To install, remove, upgrade, or downgrade software on your Xtra-PC, use Synaptic Package Manager. It offers thousands of applications and drivers that you can use and install. To use Synaptic Package Manager, go to the Start menu (the blue X in the lower left corner), then "Local Administration," then "Synaptic Package Manager."

System Information

To view information about your computer, go to the Start menu (the blue X in the lower left corner), then "Local Administration," then "System Information." This is similar to Device Manager and msinfo32 in Windows.

Time and Date

To set the time and date, go to the Start menu (the blue X in the lower left corner), then "Local Administration," then "Time and Date."

Users and Group Accounts

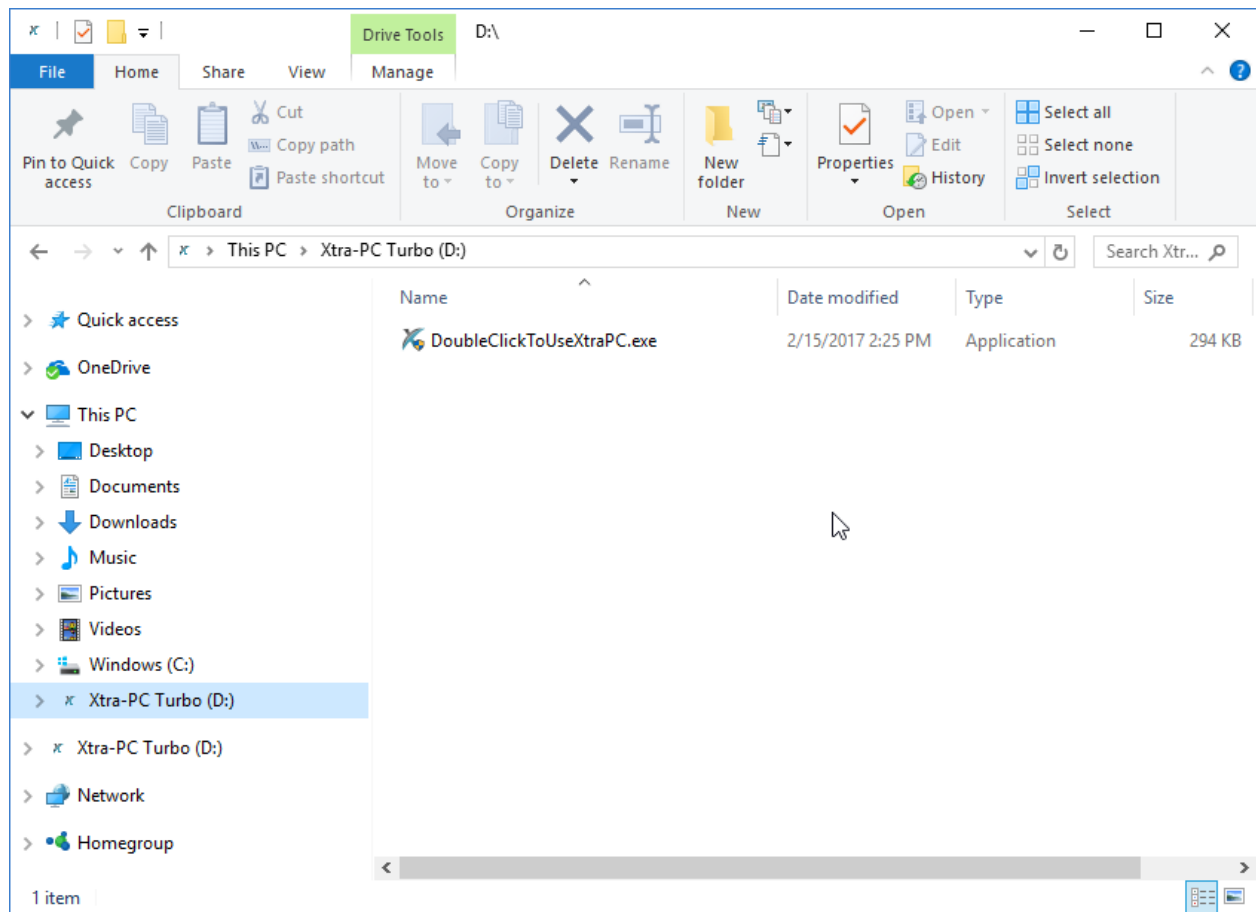
Xtra-PC comes with an administrator user. If you want to change the administrator password or add new users to your Xtra-PC, go to the Start menu (the blue X in the lower left corner), then "Local Administration," then "User and Groups." A User Accounts window will open. Click on "Unlock" in the upper right corner. You will be prompted to enter the administrator password that you created when you first used Xtra-PC.

Appendix A – Restarting to Xtra-PC from Windows

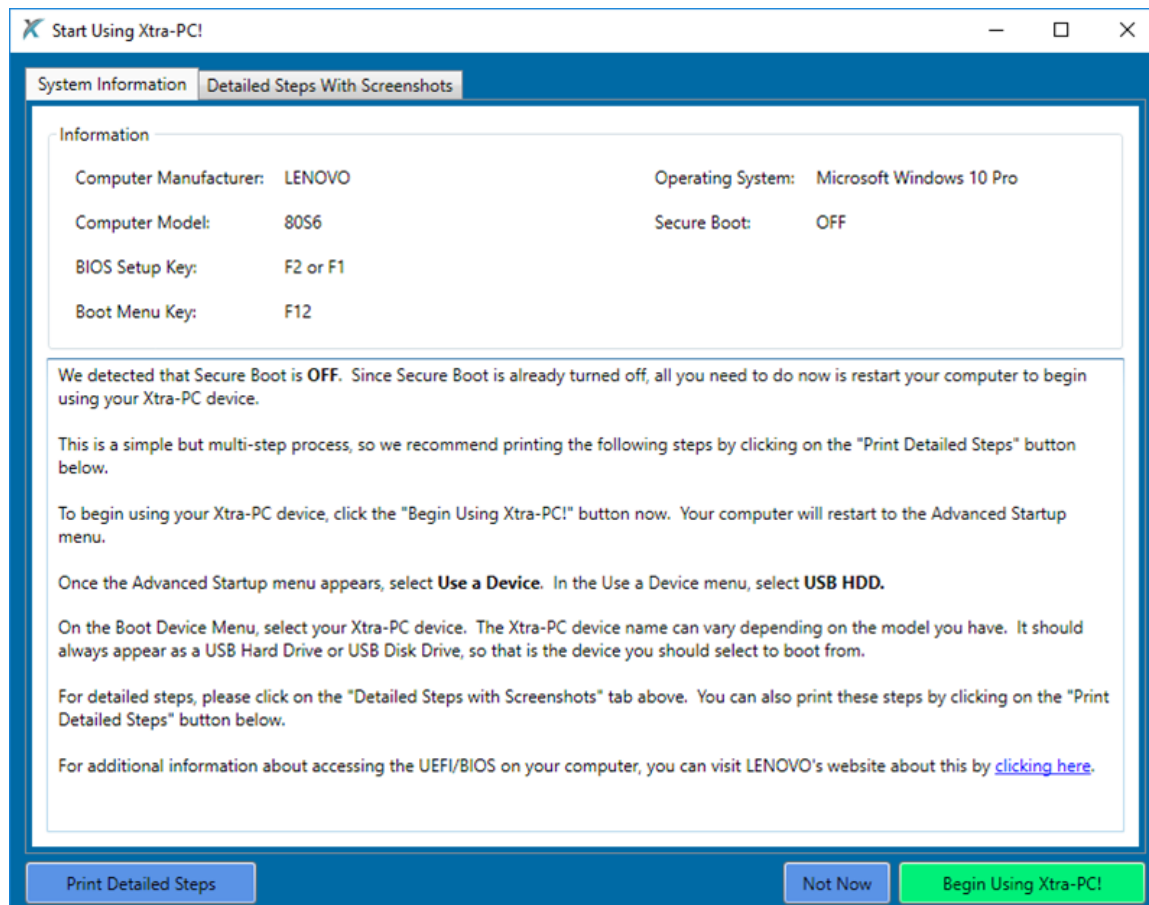
Xtra-PC 4.0 comes with the DoubleClickToUseXtraPC.exe tool that provides information about your computer, such as your computer’s boot menu and bios keys, and provides helpful step-by-step instructions on how to reboot to your Xtra-PC device.

To use DoubleClickToUseXtraPC.exe, do the following:

- 1) While in Windows, plug in your Xtra-PC device
- 2) Double-click on DoubleClickToUseXtraPC.exe.



3) After double-clicking on DoubleClickToUseXtraPC.exe, the tool will load. Below is an example of DoubleClickToUseXtraPC.exe running Windows 10 on a Lenovo laptop:

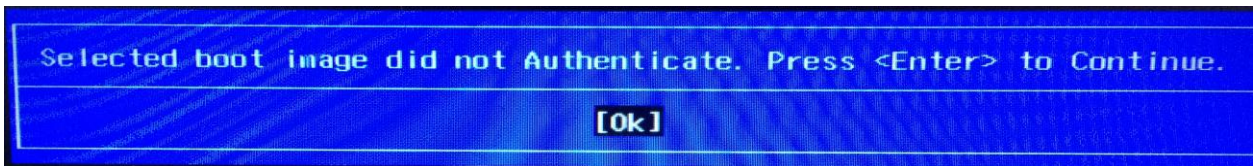


Appendix B – How to Disable Secure Boot

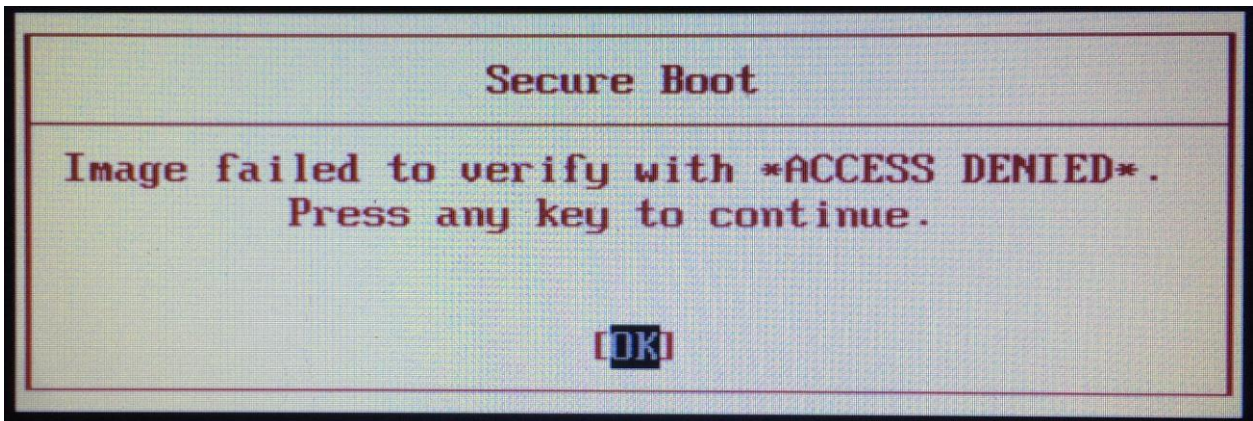
In order to boot from your Xtra-PC device, Secure Boot must be turned off. Secure Boot is a setting in your computer's BIOS/UEFI.

If you try to boot to the Xtra-PC device with Secure Boot enabled, you will get an error message about "Access Denied" or "Authentication Issue." The exact error will vary depending on your computer's manufacturer.

This is an example error from an HP Laptop when Secure Boot is still enabled and trying to boot to the Xtra-PC device:



This is an example error from a Lenovo laptop when Secure Boot is still enabled and trying to boot to the Xtra-PC device:



To disable Secure Boot, you have two options:

- 1) Restart (reboot) your computer and tap the BIOS setup key on start. Then, change the settings in your BIOS/UEFI to disable secure boot.
- 2) Use the DoubleClickToUseXtraPC tool
 - a. To use the DoubleClickToUseXtraPC tool, simply plug in your Xtra-PC device while running in Windows and Double-click on DoubleClickToUseXtraPC.exe on your Xtra-PC drive. For more information on starting DoubleClickToUseXtraPC, see [Appendix A](#).
 - b. Follow the onscreen steps.

Start Using Xtra-PC!

System Information Detailed Steps With Screenshots

Information

Computer Manufacturer:	HP	Operating System:	Microsoft Windows 10 Home
Computer Model:	HP Notebook	Secure Boot:	ON
BIOS Setup Key:	F10 or F1		
Boot Menu Key:	F9 or Esc		

We detected that Secure Boot is **ON**. In order to boot from your Xtra-PC device, Secure Boot must be turned off.

This is a simple but multi-step process, so we recommend printing the following steps by clicking on the "Print Detailed Steps" button below.

To turn Secure Boot off, please click the "Begin Using Xtra-PC!" button now. Your computer will restart to your UEFI (BIOS) settings configuration utility.

Once in the UEFI (BIOS) settings, change Secure Boot to "disabled". Save changes and exit. As soon as you exit the UEFI (BIOS), start tapping your computer's boot menu key, F9 or Esc.

On the Boot Device Menu, select your Xtra-PC device. The Xtra-PC device name can vary depending on the model you have. It should always appear as a USB Hard Drive or USB Disk Drive, so that is the device you should select to boot from.

For detailed steps, please click on the "Detailed Steps with Screenshots" tab above. You can also print these steps by clicking on the "Print Detailed Steps" button below.

For additional information about accessing the UEFI/BIOS on your computer, you can visit HP's website about this by [clicking here](#).

Print Detailed Steps Not Now Begin Using Xtra-PC!