

Useful Local Information

Cotswold District Council

Trinity Road, Cirencester GL7 1PX
01285 623 000 (Office Hours)
www.cotswold.gov.uk

Gloucestershire County Council

Shire Hall, Gloucester GL1 2TG
01452 425 000
www.gloucestershire.gov.uk

Travis Perkins (Sand, grit, timber)

12 Love Lane, Cirencester GL7 1WW
01285 652 157
www.travisperkins.co.uk

Buildbase (Sand, grit, timber)

1 Elliott Road, Love Lane Industrial Estate, Cirencester
GL7 1YS
01285 888 120
www.buildbase.co.uk

Wickes (Sand, grit, timber)

Metric Trade Park, Love Lane, Cirencester GL7 1YQ
01285 644 349
www.wickes.co.uk

Ermin Plant Hire (Sand, pumps)

56 Elliot Road, Cirencester GL7 1YS
01285 640 700
www.erminplant.co.uk

Lister Wilder (Tools, machinery)

Love Lane, Cirencester GL7 1YQ
01285 652 272
www.listerwilder.co.uk

Tesco (24hr fuel – automated card payments)

Kings Meadow, Cricklade Road, Cirencester
GL7 1NP
0345 677 9160
www.tesco.com

Cirencester Hospital (Minor Injuries Unit)

Tetbury Road, Cirencester GL7 1UY
0300 421 6200
<http://www.glos-care.nhs.uk/>

Cirencester Town Council's Emergency Duty Team has been established to assist Cotswold District Council in its role as the lead authority for responding to emergencies



www.cirencester.gov.uk



@Cirentc

Cirencester Town Council
Bingham House
1 Dyer Street
Cirencester
GL7 2PP

Tel: 01285 655 646 / Fax: 01285 643 843
Email: info@cirencester.gov.uk



cirencester
· town council ·

Community Response Plan & Emergency Duty Teams

Emergency Information

Life threatening situation
call: **999**

Local emergency call:
0151 343 2942

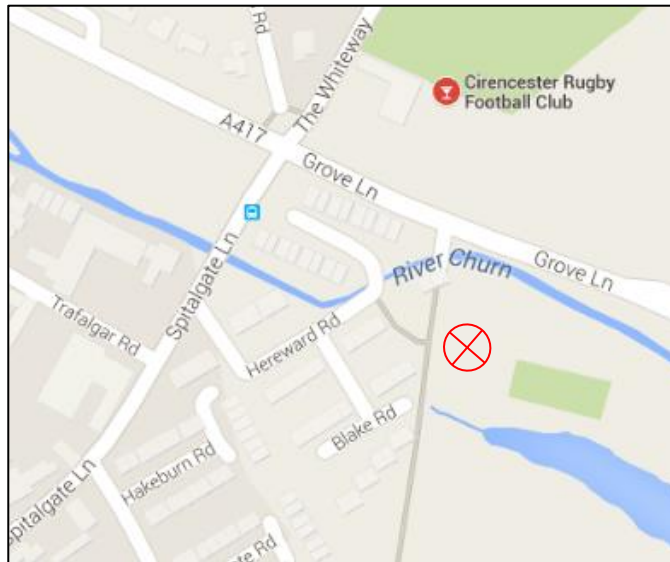
Town Council Support

The Town Council has set up an Emergency Duty Team who will ensure that a team of officers, clearly identifiable, is available at an emergency information point where needed using a purpose bought emergency gazebo. We will aim to respond swiftly to emergencies throughout the year in support of the District Council's duty as lead authority for responding to emergencies.

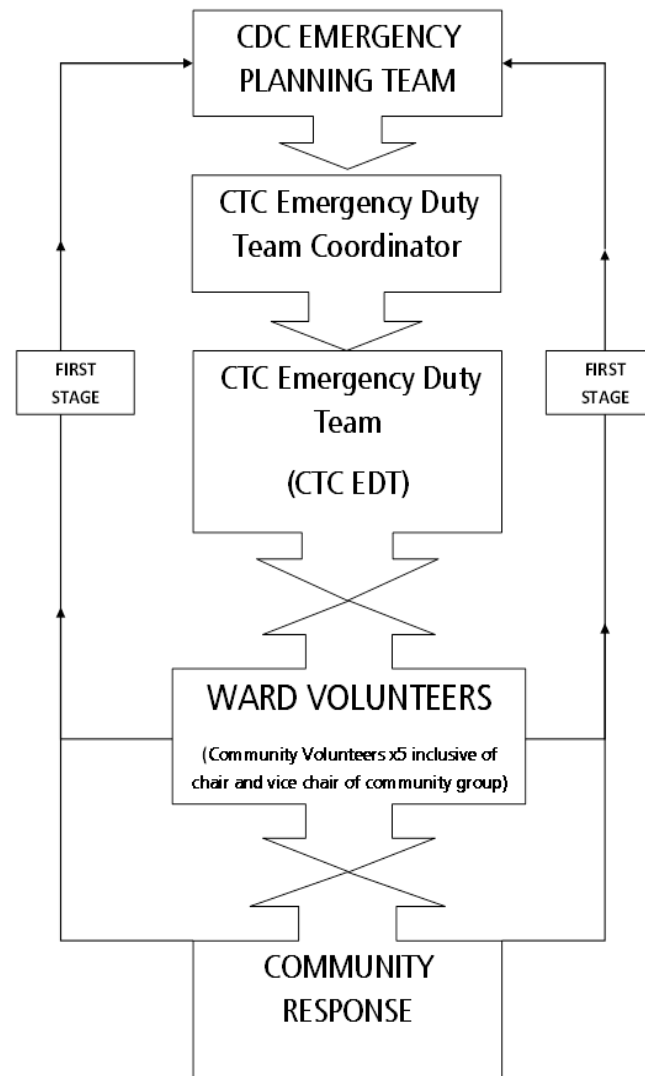
Emergency Supplies

The following supplies are stored at the Abbey Grounds Depot, Hereward Road (see map below): -

- Emergency Pump
- Torches
- Sand and Bags
- Shovels
- Hi-Viz Vests
- Emergency Blankets



Emergency Response Procedure



Community Support

The Council is working hard to make sure that you are as prepared as you can be in the event of an emergency. By being informed and prepared, you can significantly reduce the risk to life and property. By working together as local residents, with the Town Council and community volunteers, we will hopefully minimise the impact of any emergency.

Preparing for an Emergency

- Purchase sand bags and store close by
- Sign up to Environment Agency Floodline Alerts at <https://www.fws.environment-agency.gov.uk/app/olr/register>
- Check vital supplies
- Keep this leaflet to hand

Who to Contact

1. In a life threatening situation: **999**
 2. If it is not life threatening but a widespread local emergency:
Cotswold District Council
01285 623000 (Office Hours)
 3. Specific Issues, contact the relevant organisation
- Gas**
National Grid: 0800 111 999 (24hr)
- Electric:**
National Grid: 0800 404 090 (24hr)
- River Flooding:**
Floodline: 0345 988 1188 (24hr)
- Sewerage Flooding:**
Thames Water: 0800 316 9800 (24hr)
- Surface Water, Roads and Pavements:**
Gloucestershire Highways: 08000 514 514 (24hr)

