

RF signal routing on Dual PA based on PA Mode settings. Note that the Manpack is the 'Priority' channel and automatically re-routes the handheld antenna connection to avoid conflict.

Option #1 - No Antenna buttons

Possible antenna connections if Manpack PA in **SAT**
Mode based on HH PA mode

MANPACK		HANDHELD	
MODE	ANT	MODE	ANT
SAT ●	SAT ●	SAT ●	SAT ○
WB ○	WB ○	WB ○	WB ○
LOS ○	LOS ○	LOS ○	LOS ●

MANPACK		HANDHELD	
MODE	ANT	MODE	ANT
SAT ●	SAT ●	SAT ○	SAT ○
WB ○	WB ○	WB ●	WB ●
LOS ○	LOS ○	LOS ○	LOS ○

MANPACK		HANDHELD	
MODE	ANT	MODE	ANT
SAT ●	SAT ●	SAT ○	SAT ○
WB ○	WB ○	WB ○	WB ○
LOS ○	LOS ○	LOS ●	LOS ●

Possible antenna connections if Manpack PA in **WB**
Mode based on HH PA mode

MANPACK		HANDHELD	
MODE	ANT	MODE	ANT
SAT ○	SAT ○	SAT ●	SAT ●
WB ●	WB ●	WB ○	WB ○
LOS ○	LOS ○	LOS ○	LOS ○

MANPACK		HANDHELD	
MODE	ANT	MODE	ANT
SAT ○	SAT ○	SAT ○	SAT ○
WB ●	WB ●	WB ●	WB ○
LOS ○	LOS ○	LOS ○	LOS ●

MANPACK		HANDHELD	
MODE	ANT	MODE	ANT
SAT ○	SAT ○	SAT ○	SAT ○
WB ●	WB ●	WB ○	WB ○
LOS ○	LOS ○	LOS ●	LOS ●

Possible antenna connections if Manpack PA in **LOS**
Mode based on HH PA mode

MANPACK		HANDHELD	
MODE	ANT	MODE	ANT
SAT ○	SAT ○	SAT ●	SAT ●
WB ○	WB ○	WB ○	WB ○
LOS ●	LOS ●	LOS ○	LOS ○

MANPACK		HANDHELD	
MODE	ANT	MODE	ANT
SAT ○	SAT ○	SAT ○	SAT ○
WB ○	WB ○	WB ●	WB ●
LOS ●	LOS ●	LOS ○	LOS ○

MANPACK		HANDHELD	
MODE	ANT	MODE	ANT
SAT ○	SAT ○	SAT ○	SAT ○
WB ○	WB ○	WB ○	WB ●
LOS ●	LOS ●	LOS ●	LOS ○

Default antenna connections with **Either or Both Manpack and HH PAs powered OFF**

MANPACK		HANDHELD	
MODE	ANT	MODE	ANT
SAT ⊗	SAT ●	SAT ⊗	SAT ○
WB ⊗	WB ●	WB ⊗	WB ○
LOS ⊗	LOS ○	LOS ⊗	LOS ●

Note that when the Manpack PA is OFF, the Manpack SAT antenna connection path is 30-512 MHz and that Manpack WB antenna connection path is 30 MHz to 2.0 GHz. When the Handheld PA is OFF, the Handheld LOS antenna connection is 30 MHz to 2.0 GHz, otherwise the Handheld LOS antenna connection is 30-512 MHz.

RF signal routing on Dual PA based on PA Mode settings. Note that the Manpack is the 'Priority' channel and automatically re-routes the handheld antenna connection to avoid conflict.

Option #2 - Antenna Button on Hand Held only - Allows selecting any open antenna port for the handheld.

Possible antenna connections if Manpack PA in **SAT** Mode based on HH PA mode

MANPACK		HANDHELD	
MODE	ANT	MODE	ANT
SAT ●	SAT ● ₁	SAT ●	SAT ●
WB ○	WB ○	WB ○	WB ● ₃
LOS ○	LOS ○	LOS ○	LOS ● ₂

MANPACK		HANDHELD	
MODE	ANT	MODE	ANT
SAT ●	SAT ● ₁	SAT ○	SAT ○
WB ○	WB ○	WB ●	WB ● ₂
LOS ○	LOS ○	LOS ○	LOS ● ₃

MANPACK		HANDHELD	
MODE	ANT	MODE	ANT
SAT ●	SAT ● ₁	SAT ○	SAT ○
WB ○	WB ○	WB ○	WB ● ₃
LOS ○	LOS ○	LOS ●	LOS ● ₂

Possible antenna connections if Manpack PA in **WB** Mode based on HH PA mode

MANPACK		HANDHELD	
MODE	ANT	MODE	ANT
SAT ○	SAT ○	SAT ●	SAT ● ₂
WB ●	WB ● ₁	WB ○	WB ○
LOS ○	LOS ○	LOS ○	LOS ● ₃

MANPACK		HANDHELD	
MODE	ANT	MODE	ANT
SAT ○	SAT ○	SAT ○	SAT ● ₃
WB ●	WB ● ₁	WB ●	WB ○
LOS ○	LOS ○	LOS ○	LOS ● ₂

MANPACK		HANDHELD	
MODE	ANT	MODE	ANT
SAT ○	SAT ○	SAT ○	SAT ● ₃
WB ●	WB ● ₁	WB ○	WB ○
LOS ○	LOS ○	LOS ●	LOS ● ₂

Possible antenna connections if Manpack PA in **LOS** Mode based on HH PA mode

MANPACK		HANDHELD	
MODE	ANT	MODE	ANT
SAT ○	SAT ○	SAT ●	SAT ● ₂
WB ○	WB ○	WB ○	WB ● ₃
LOS ●	LOS ● ₁	LOS ○	LOS ○

MANPACK		HANDHELD	
MODE	ANT	MODE	ANT
SAT ○	SAT ○	SAT ●	SAT ● ₃
WB ○	WB ○	WB ●	WB ○
LOS ●	LOS ● ₁	LOS ○	LOS ○

MANPACK		HANDHELD	
MODE	ANT	MODE	ANT
SAT ○	SAT ○	SAT ○	SAT ● ₃
WB ○	WB ○	WB ○	WB ○
LOS ●	LOS ● ₁	LOS ●	LOS ○

Default antenna connections with **BOTH Manpack and HH PAs powered OFF**

MANPACK		HANDHELD	
MODE	ANT	MODE	ANT
SAT ⊗	SAT ●	SAT ⊗	SAT ○
WB ⊗	WB ●	WB ⊗	WB ○
LOS ⊗	LOS ○	LOS ⊗	LOS ●

Antenna connections with **Manpack-ON & Handheld-OFF**

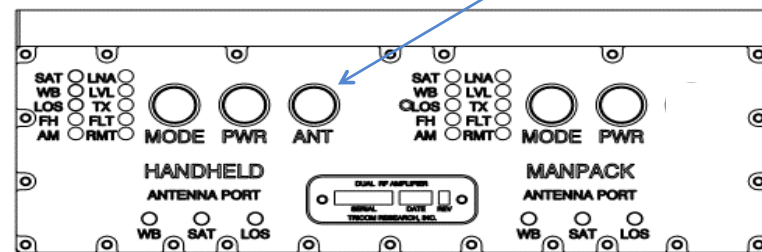
Refer to possible combinations per chart . Note that Mode will **NOT** be indicated on the Handheld PA.

Antenna connections with **Manpack-OFF & Handheld -ON**

MANPACK		HANDHELD	
MODE	ANT	MODE	ANT
SAT ⊗	SAT ●	SAT ⊗	SAT ○
WB ⊗	WB ●	WB ⊗	WB ●
LOS ⊗	LOS ○	LOS ⊗	LOS ●

Notes :

- 1 Black 1 ●₁ is the default antenna position when MODE is changed.
- 2 Black 2 ●₂ is the antenna position when any MODE is changed.
- 3 Black 3 ●₃ is the Secondary Handheld position of available antennas accessed by pressing the Handheld antenna button. Pressing the ANT button toggles between 2 and 3.



Notes :

- 1 Black ● is the default position without pressing the antenna button.
- 2 First press of the antenna button sets antennas to ● Green position as shown in chart above.
- 3 Second press of the antenna button sets antennas to ● Purple position as shown in chart above.
- 4 Third press of the antenna button sets antennas to ● Orange position as shown in chart above.
- 5 Fourth press of the antenna button sets antennas back to the default Black position as shown in chart above.

Note that when the Manpack PA is OFF, the Manpack LOS and SAT connection paths are 30-512 MHz and that Manpack WB connection path is 30 MHz to 2.0 GHz. When the Handheld PA is OFF, the Handheld to LOS connection is 30 MHz to 2.0 GHz, otherwise the Handheld antenna connections are 30-512 MHz.

RF signal routing on Dual PA based on PA Mode settings. Note that the Manpack is the 'Priority' channel and automatically re-routes the handheld antenna connection to avoid conflict.

Option #3 - Antenna Button on ManPack only. Allows Manpack to select any antenna port.

Possible antenna connections if Manpack PA in **SAT** Mode based on HH PA mode

MANPACK		HANDHELD			
MODE	ANT	MODE	ANT		
SAT	●	SAT	●	●	●
WB	○	WB	○	○	○
LOS	○	LOS	○	○	○

Possible antenna connections if Manpack PA in **WB** Mode based on HH PA mode

MANPACK		HANDHELD			
MODE	ANT	MODE	ANT		
SAT	○	SAT	○	○	○
WB	●	WB	●	○	○
LOS	○	LOS	○	○	○

Possible antenna connections if Manpack PA in **LOS** Mode based on HH PA mode

MANPACK		HANDHELD			
MODE	ANT	MODE	ANT		
SAT	○	SAT	○	○	○
WB	○	WB	○	○	○
LOS	●	LOS	○	○	○

Default antenna connections with **BOTH Manpack and HH PAs powered OFF**

MANPACK		HANDHELD			
MODE	ANT	MODE	ANT		
SAT	⊗	SAT	⊗	○	○
WB	⊗	WB	⊗	○	○
LOS	⊗	LOS	⊗	○	○

Antenna connections with **Manpack-ON & Handheld-OFF**

MANPACK		HANDHELD			
MODE	ANT	MODE	ANT		
SAT	●	SAT	○	○	○
WB	○	WB	○	○	○
LOS	○	LOS	○	○	○

MANPACK		HANDHELD			
MODE	ANT	MODE	ANT		
SAT	○	SAT	○	○	○
WB	●	WB	○	○	○
LOS	○	LOS	○	○	○

MANPACK		HANDHELD			
MODE	ANT	MODE	ANT		
SAT	○	SAT	○	○	○
WB	○	WB	○	○	○
LOS	●	LOS	○	○	○

Refer to possible combinations per chart
Note that Mode will **NOT** be indicated on the Handheld PA.

Antenna connections with **Manpack-OFF & Handheld-ON**

MANPACK		HANDHELD			
MODE	ANT	MODE	ANT		
SAT	●	SAT	○	○	○
WB	○	WB	○	○	○
LOS	○	LOS	○	○	○

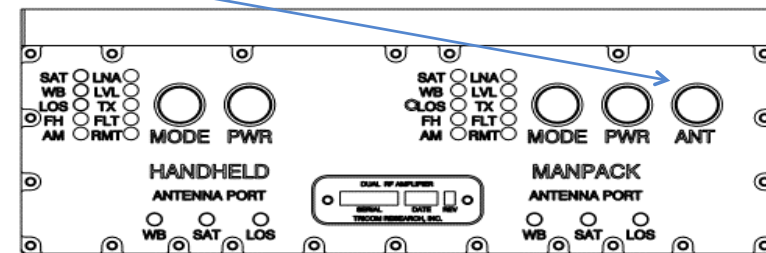
MANPACK		HANDHELD			
MODE	ANT	MODE	ANT		
SAT	○	SAT	○	○	○
WB	●	WB	○	○	○
LOS	○	LOS	○	○	○

MANPACK		HANDHELD			
MODE	ANT	MODE	ANT		
SAT	○	SAT	○	○	○
WB	○	WB	○	○	○
LOS	●	LOS	○	○	○

MANPACK		HANDHELD			
MODE	ANT	MODE	ANT		
SAT	⊗	SAT	○	○	○
WB	⊗	WB	○	○	○
LOS	⊗	LOS	○	○	○

Notes :

- 1 Black ● is the default antenna position when MODE is changed.
- 2 First press of Manpack antenna button moves antennas to the Green ● position (as shown in chart above).
- 3 Second press of Manpack antenna button moves antennas to the Purple ● position (as shown in chart above).
- 4 Third press of Manpack antenna button returns to the default Black position.



Notes :

- 1 Black ● is the default position without pressing the antenna button.
- 2 First press of the antenna button sets antennas to ● Green position as shown in chart above.
- 3 Second press of the antenna button sets antennas to ● Purple position as shown in chart above.
- 4 Third press of the antenna button sets antennas to ● Orange position as shown in chart above.
- 5 Fourth press of the antenna button sets antennas back to the default Black position as shown in chart above.

Note that when the Manpack PA is OFF, the Manpack LOS and SAT connection paths are 30-512 MHz and that Manpack WB connection path is 30 MHz to 2.0 GHz. When the Handheld PA is OFF, the Handheld to LOS connection is 30 MHz to 2.0 GHz, otherwise the Handheld antenna connections are 30-512 MHz.

RF signal routing on Dual PA based on PA Mode settings. Note that the Manpack is the 'Priority' channel and automatically re-routes the handheld antenna connection to avoid conflict.

Option #4 - Antenna Buttons on both Manpack and Hand Held. Allows Manpack to select any antenna port and handheld to select any available antenna port.

Possible antenna connections if Manpack PA in **SAT** Mode based on HH PA mode

MANPACK		HANDHELD	
MODE	ANT	MODE	ANT
SAT		SAT	
WB		WB	
LOS		LOS	

Possible antenna connections if Manpack PA in **WB** Mode based on HH PA mode

MANPACK		HANDHELD	
MODE	ANT	MODE	ANT
SAT		SAT	
WB		WB	
LOS		LOS	

Possible antenna connections if Manpack PA in **LOS** Mode based on HH PA mode

MANPACK		HANDHELD	
MODE	ANT	MODE	ANT
SAT		SAT	
WB		WB	
LOS		LOS	

Default antenna connections with **BOTH Manpack and HH PAs powered OFF**

MANPACK		HANDHELD	
MODE	ANT	MODE	ANT
SAT		SAT	
WB		WB	
LOS		LOS	

MANPACK		HANDHELD	
MODE	ANT	MODE	ANT
SAT		SAT	
WB		WB	
LOS		LOS	

MANPACK		HANDHELD	
MODE	ANT	MODE	ANT
SAT		SAT	
WB		WB	
LOS		LOS	

MANPACK		HANDHELD	
MODE	ANT	MODE	ANT
SAT		SAT	
WB		WB	
LOS		LOS	

Antenna connections with **Manpack-ON & Handheld-OFF**

Refer to possible combinations per chart
Note that Mode will **NOT** be indicated on the Handheld PA.

MANPACK		HANDHELD	
MODE	ANT	MODE	ANT
SAT		SAT	
WB		WB	
LOS		LOS	

MANPACK		HANDHELD	
MODE	ANT	MODE	ANT
SAT		SAT	
WB		WB	
LOS		LOS	

MANPACK		HANDHELD	
MODE	ANT	MODE	ANT
SAT		SAT	
WB		WB	
LOS		LOS	

Antenna connections with **Manpack-OFF & Handheld-ON**

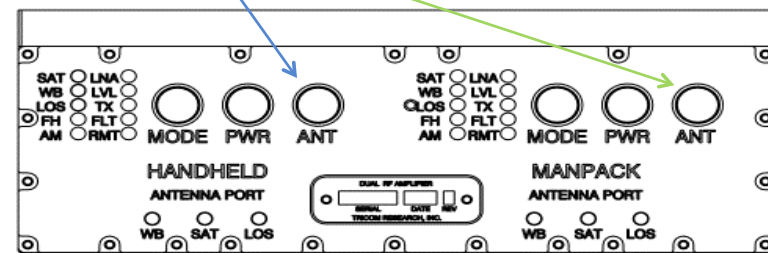
MANPACK		HANDHELD	
MODE	ANT	MODE	ANT
SAT		SAT	
WB		WB	
LOS		LOS	

Notes :

- 1 Black 1 1 is the default antenna position when MODE is changed.
- 2 Black 2 2 is the default antenna position on the Handheld Antenna when any MODE is changed.
- 3 Black 3 3 is the Secondary Handheld position of available antennas by pressing the Handheld antenna button.
- 4 Green 1 1 First press of Manpack antenna button sets antennas to Green 1 position as shown in chart above.
- 5 Green 2 2 is the default antenna position on the Handheld Antenna without pressing the Handheld antenna button.
- 6 Green 3 3 is the Secondary Handheld position of available antennas by pressing the Handheld antenna button.
- 7 Purple 1 1 Second press of Manpack antenna button sets antennas to Purple 1 position as shown in chart above.
- 8 Purple 2 2 is the default antenna position on the Handheld Antenna without pressing the Handheld antenna button.
- 9 Purple 3 3 is the Secondary Handheld position of available antennas by pressing the Handheld antenna button.
- 10 Third press of the Manpack antenna button returns to the default Black position.

Notes :

- 1 Black is the default position without pressing any antenna button.
- 2 First press of any antenna button sets antennas to Green position as shown in chart above.
- 3 Second press of any antenna button sets antennas to Purple position as shown in chart above.
- 4 Third press of any antenna button sets antennas to Orange position as shown in chart above.
- 5 Fourth press of the antenna button sets antennas back to the default Black position as shown in chart above.



Note that when the Manpack PA is OFF, the Manpack LOS and SAT connection paths are 30-512 MHz and that Manpack WB connection path is 30 MHz to 2.0 GHz. When the Handheld PA is OFF, the Handheld to LOS connection is 30 MHz to 2.0 GHz, otherwise the Handheld antenna connections are 30-512 MHz.