

# WHEREOIL

## Enterprise solutions

An enterprise data repository for enhanced overview and control

**Managing and preserving data resources across a number of international locations, coupled with ineffective validation controls for metadata, was creating problems for a large, independent oil and gas company. Users were struggling to find the available data they required for their day-to-day tasks. The company chose Whereoil to help them address these issues.**

### Challenge

The company wanted to enhance its validation controls for metadata and to overcome restrictions in the data model imposed by limitations in the company's conventional, relational corporate data bank. One of the key objectives was to develop a system that could provide a complete overview of information on users' shared disks or third-party databases and applications in one single interface.

### Solution

The company adopted a new enterprise data solution, with Whereoil as its core technology. Whereoil was setup to connect and index the most important data sources, file shares and corporate data bank, providing geoscientists with a unified, secure access interface for all of their corporate data.

Starting at corporate HQ, client data was migrated from the company's previous data bank to Whereoil and a strict control procedure introduced for metadata completeness and quality reporting. Remaining data sources were then connected to Whereoil, creating a complete data overview for users. Following a successful rollout, the system was expanded to include remote offices with local data indexing. The Whereoil Data Tracker and Interpretation module was introduced to help project managers evaluate new acreage by introducing process control and geology and geophysics project management.

### Benefits

Today, Whereoil enables this company to manage its corporate dataset and index all of its available data stores, file systems, real-time drilling data, and production data across multiple locations and countries. Whereoil also controls geology and geophysics dictionaries, and access and retrieval permissions to data across the organization.

**A clearly defined data control system ensures that users follow relevant guidelines to protect the quality and integrity of the data, making it easier to find and use these vital resources.**

Whereoil is a flexible solution that works at the scale you need: whether that is a local installation for a single business unit or a global solution delivering data integration across every office in a multinational corporation. Whereoil makes searching and connecting data simpler and more powerful than ever before. Whereoil is much more than a powerful search engine: it also offers effective solutions for fast and efficient data loading and effective storage.



## Challenge

to provide an effective overview of all company data, improve metadata quality and preserve data resources

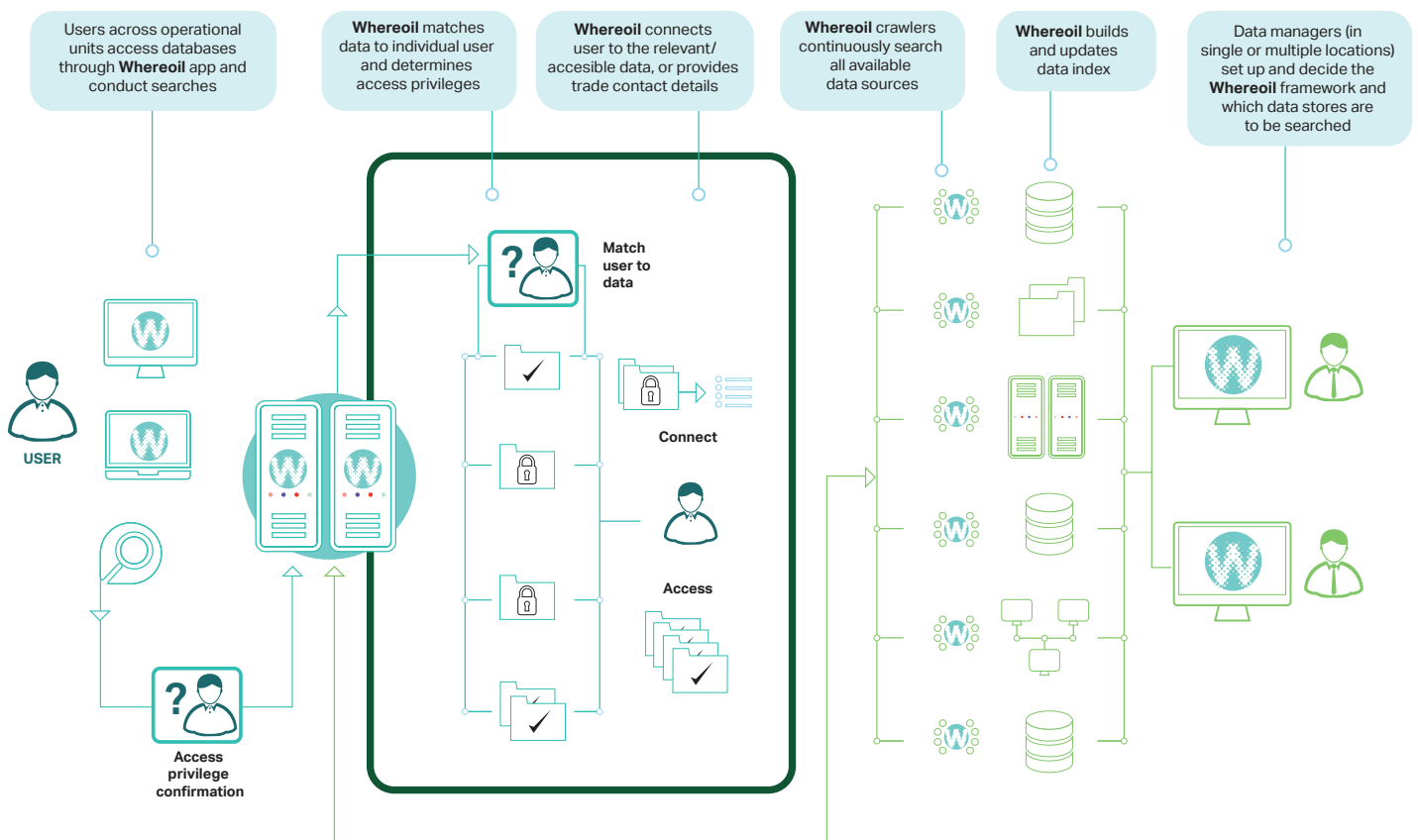
## Solution

a Whereoil installation that connected all data stores, improved validation methods and provided more effective data management tools

## Benefits

optimized management and overview of data with all sites linked through a single enterprise data solution and enhanced metadata quality

### Schematic of a typical Whereoil user workflow and information flow.



For more information contact  
Email: [info@kadme.com](mailto:info@kadme.com)  
Tel: +47 51 87 42 50  
[www.kadme.com](http://www.kadme.com)

**KADME**

Copyright © 2017 KADME AS. Whereoil and KADME are registered trademarks of KADME AS. Other company, products, and services marks are the properties of their respective owners.