



Solution Guide

The Eni Puzzle welcomes you to “Human Power!”
The puzzle is completely charged and ready to go when you are. As you rest, the puzzle rests. That’s because you are the battery. This means that you can take it where ever you go...

ON A PLANE: *Flight attendant approved through the entirety of the flight.*

ON A TRAIN: *Remeber to get the conductor his ticket before dwelling in the puzzles mystery.*

OR IN A CAR: *Sorry, but drivers are not permitted to play while driving.*

No batteries or flashy lights. Just your curiosity and imagination to get started. Feel free to enjoy the freedom of Human Powered Toys!







Let's get started with the basics:

First practice by lining up the colors....







Now a simple checker pattern...

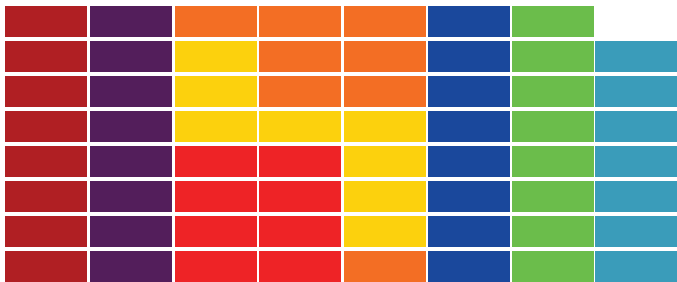




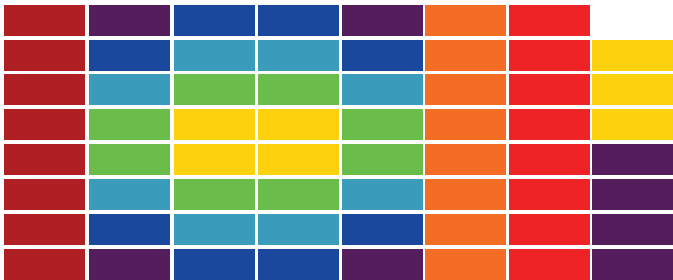


Next, some lighting bolts.

You should be getting the hang of it now!







Look what happens if you re-arrange the colors!
The same pattern looks different...





Now...Create your own!





With the Eni Puzzle, there isn't just one solution. There are a multitude of solutions. The solution will be one that you choose. The examples in this guide are suggested to get the creative process started. Eventually, you will want to make your own unique patterns. There are many more not in this book. If you create one; place your solution on YouTube and email the link to: eni@enipuzzles.com.

We would love to award you with the
"Supreme Being Achievement"





What can you do with a little space?

www.enipuzzles.com