

Blessing of the Bay Public Meeting

March 21, 2018

INTRODUCTION

CONTEXT/ SYSTEMS

EXISTING CONDITIONS- SITE SCALE

WORK TO DATE

PRECEDENTS

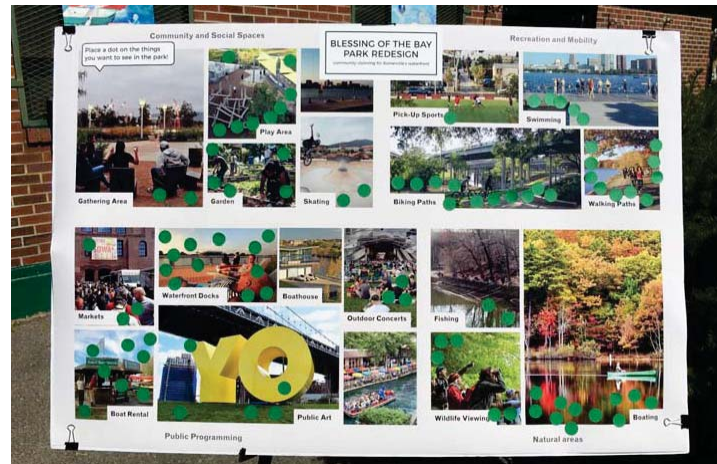
ACTIVITIES

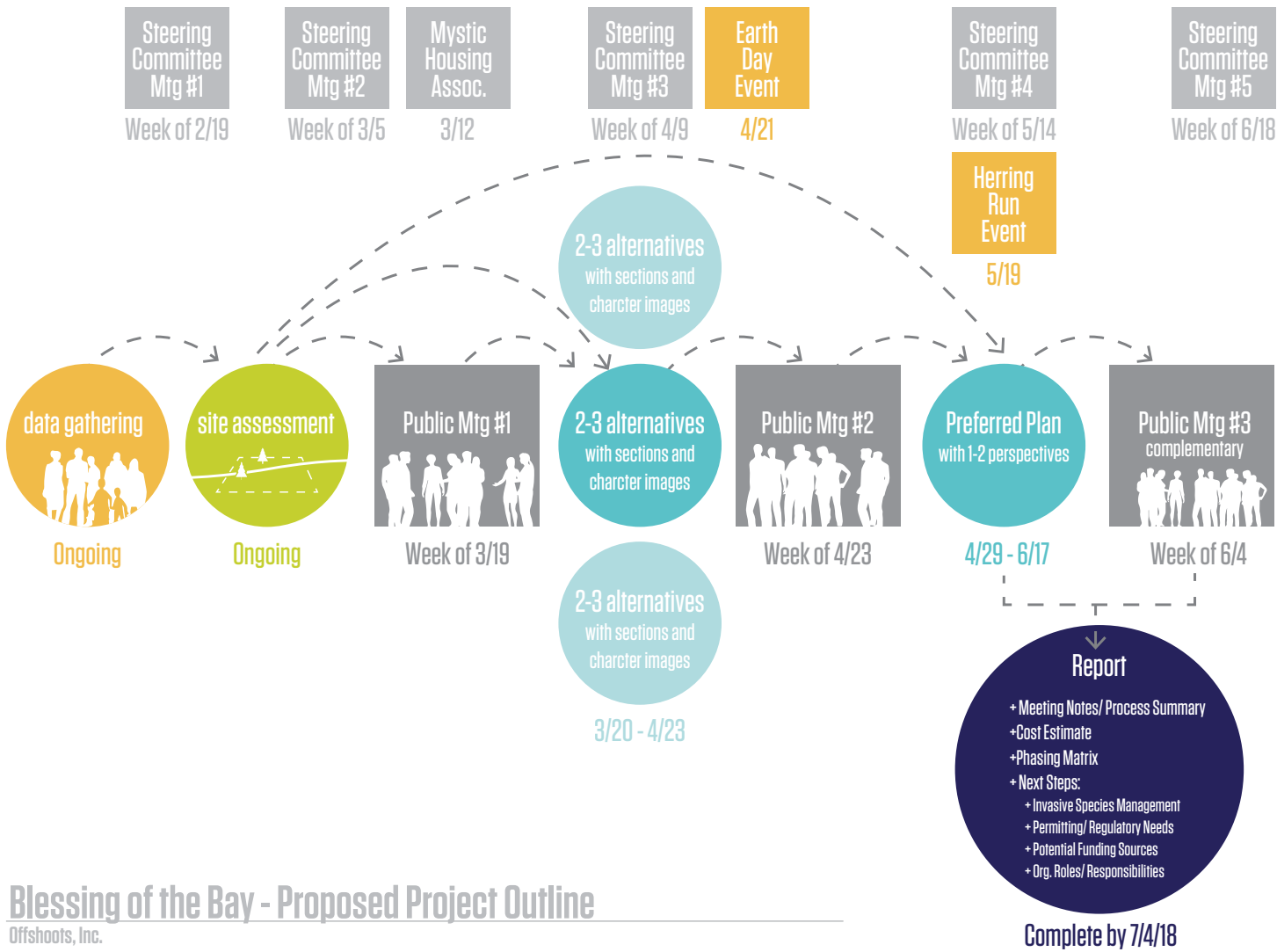




INTRODUCTION

Amber Christoffersen
MyRWA





INTRODUCTION

Amber Christoffersen
MyRWA

Agenda

Slide Presentation
30-40 Minutes

CONTEXT

EXISTING CONDITIONS- SITE

WORK TO DATE

PRECEDENTS

ACTIVITIES

Banners- 20 Minutes

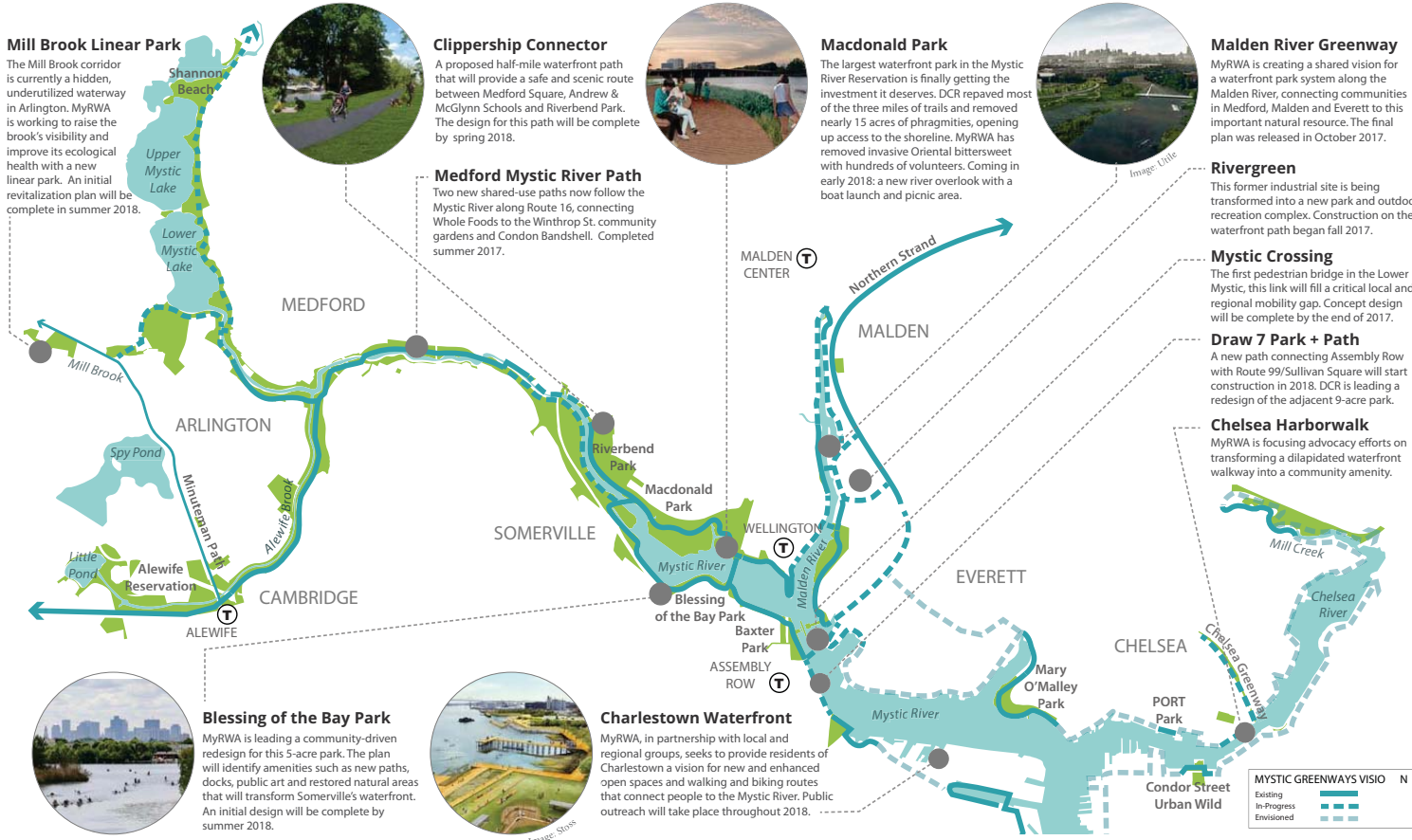
Mapping- 30 Minutes

LEARN MORE
mysticriver.org/greenways-progress

MYSTIC GREENWAYS PROGRESS

MYSTIC RIVER

CONTEXT



Mill Brook Linear Park

The Mill Brook corridor is currently a hidden, underutilized waterway in Arlington. MyRWA is working to raise the brook's visibility and improve its ecological health with a new linear park. An initial revitalization plan will be complete in summer 2018.



Clippership Connector

A proposed half-mile waterfront path that will provide a safe and scenic route between Medford Square, Andrew & McGlynn Schools and Riverbend Park. The design for this path will be complete by spring 2018.



Medford Mystic River Path

Two new shared-use paths now follow the Mystic River along Route 16, connecting Whole Foods to the Winthrop St. community gardens and Condon Bandshell. Completed summer 2017.

Macdonald Park

The largest waterfront park in the Mystic River Reservation is finally getting the investment it deserves. DCR repaved most of the three miles of trails and removed nearly 15 acres of phragmites, opening up access to the shoreline. MyRWA has removed invasive Oriental bittersweet with hundreds of volunteers. Coming in early 2018: a new river overlook with a boat launch and picnic area.



Malden River Greenway

MyRWA is creating a shared vision for a waterfront park system along the Malden River, connecting communities in Medford, Malden and Everett to this important natural resource. The final plan was released in October 2017.

Rivergreen

This former industrial site is being transformed into a new park and outdoor recreation complex. Construction on the waterfront path began fall 2017.

Mystic Crossing

The first pedestrian bridge in the Lower Mystic, this link will fill a critical local and regional mobility gap. Concept design will be complete by the end of 2017.

Draw 7 Park + Path

A new path connecting Assembly Row with Route 99/Sullivan Square will start construction in 2018. DCR is leading a redesign of the adjacent 9-acre park.

Chelsea Harborwalk

MyRWA is focusing advocacy efforts on transforming a dilapidated waterfront walkway into a community amenity.

Blessing of the Bay Park

MyRWA is leading a community-driven redesign for this 5-acre park. The plan will identify amenities such as new paths, docks, public art and restored natural areas that will transform Somerville's waterfront. An initial design will be complete by summer 2018.



Charlestown Waterfront


MyRWA, in partnership with local and regional groups, seeks to provide residents of Charlestown a vision for new and enhanced open spaces and walking and biking routes that connect people to the Mystic River. Public outreach will take place throughout 2018.

Mystic Greenways Progress
 by MyRWA

PROGRAMMATIC

CONTEXT

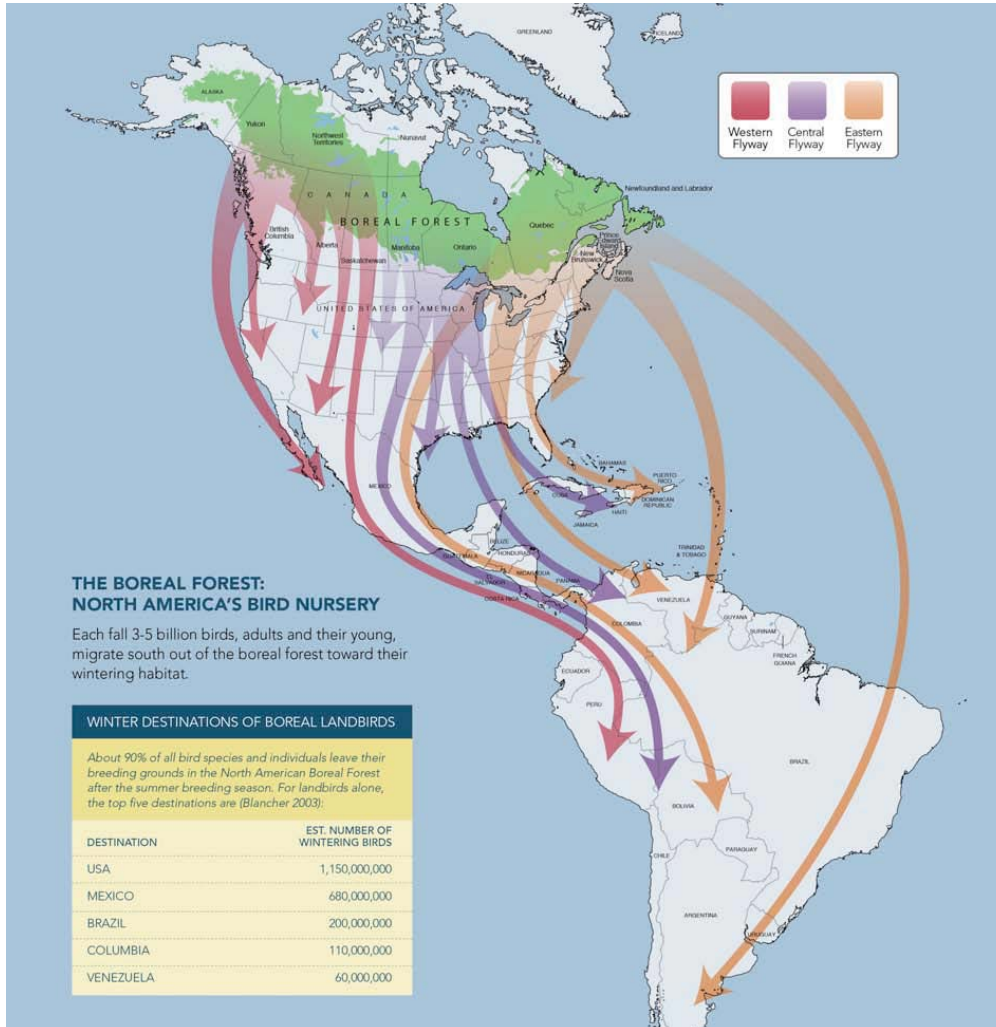
- ra i s
- i e Pat s
- Payi g i e s
- Payg r o n s
- Marinas
- oat r a s o c s
- e r o o s
- t a s
- e n Grass

-  River Access
-  Picnic Table
-  Trail
-  Parking

-  Trail
-  Bridge



Mystic Greenways Progress
by MyRWA



ECOLOGICAL - EASTERN FLYWAY

CONTEXT

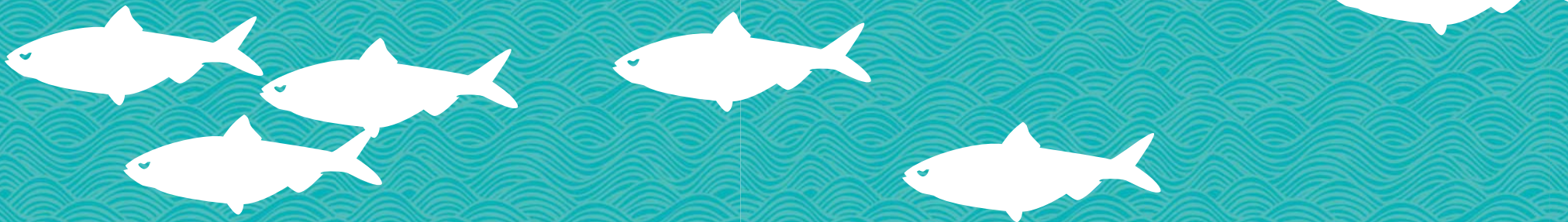
area yways Ma
 area ongbir nitiat e

630,098

The number of river herring in the Mystic during the 2017 migration — the largest run in Massachusetts!

ECOLOGICAL - HERRING RUN

CONTEXT



MyRWA



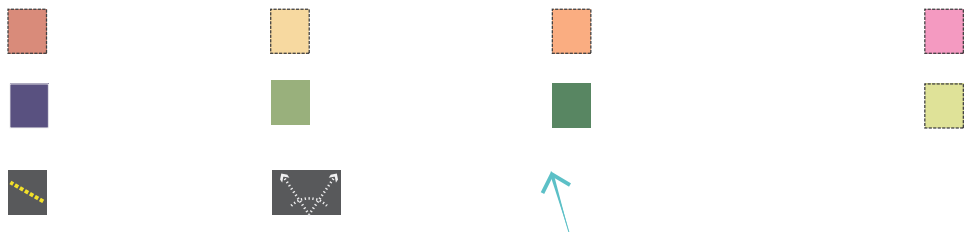
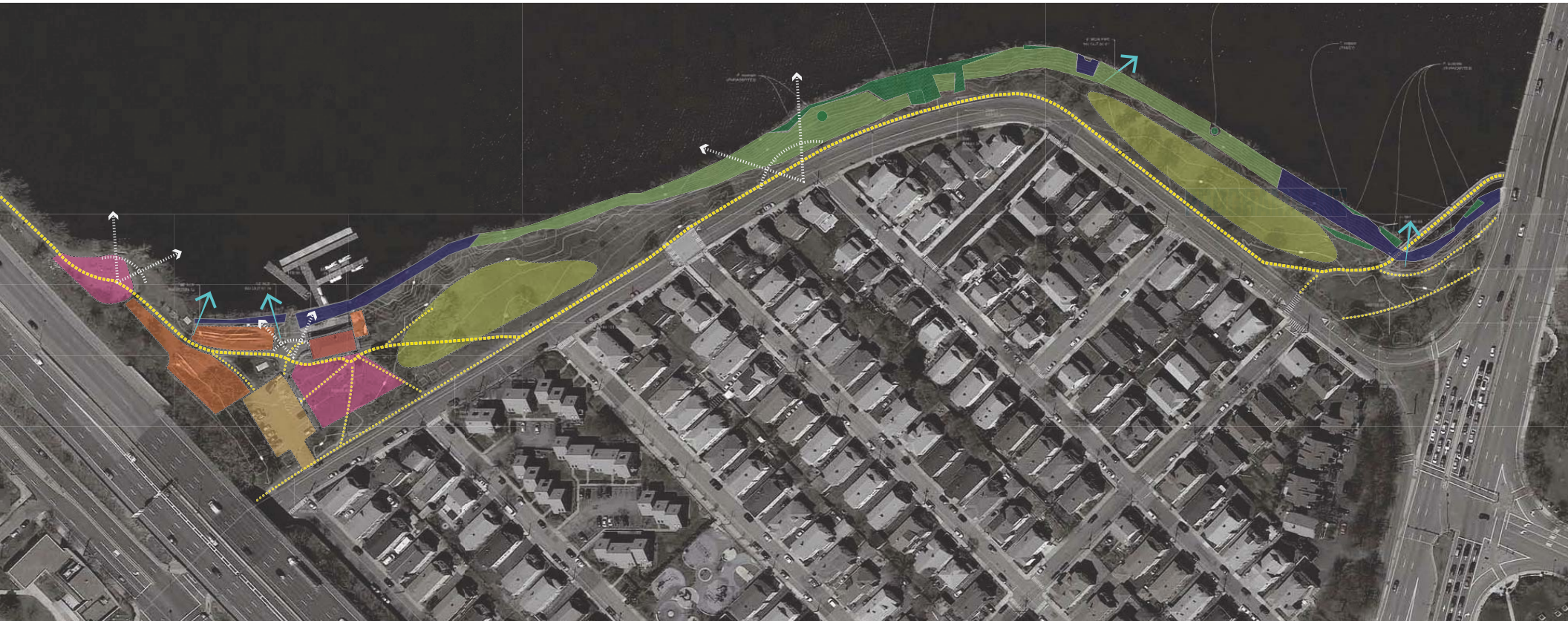
NEIGHBORHOOD

CONTEXT

11 min.

2 min.

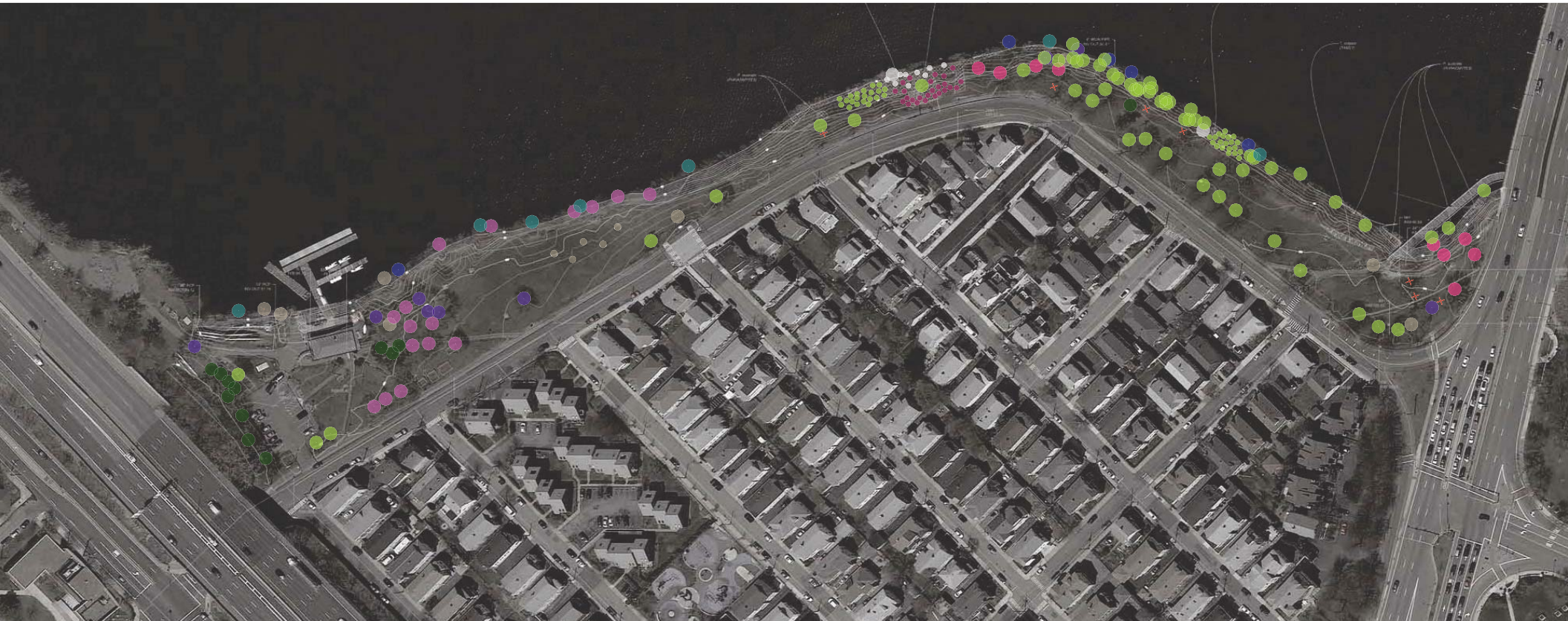
--- Mystic A e



PROGRAMMING

EXISTING CONDITIONS

no Gate ere ro
ite Wa
r eys
Master P ans



● ii
● P
× T

● A
● F

● R
●

● A
● P

● O
● B



TREE CANOPY

EXISTING CONDITIONS

n o Gat ere ro
 ite Wa
 r eys
 Master P ans

Search for an address in the Boston area



CONTEXT-Flooding

TO BEGIN, SELECT A FLOODING SCENARIO

2050
SEA LEVEL RISE

2050
SEA LEVEL RISE + MAJOR STORM

2100
SEA LEVEL RISE

2100
SEA LEVEL RISE + MAJOR STORM

Based on future emissions scenarios, global sea levels are projected to rise 1-2 feet by 2050. This map shows 2 feet of sea level rise.

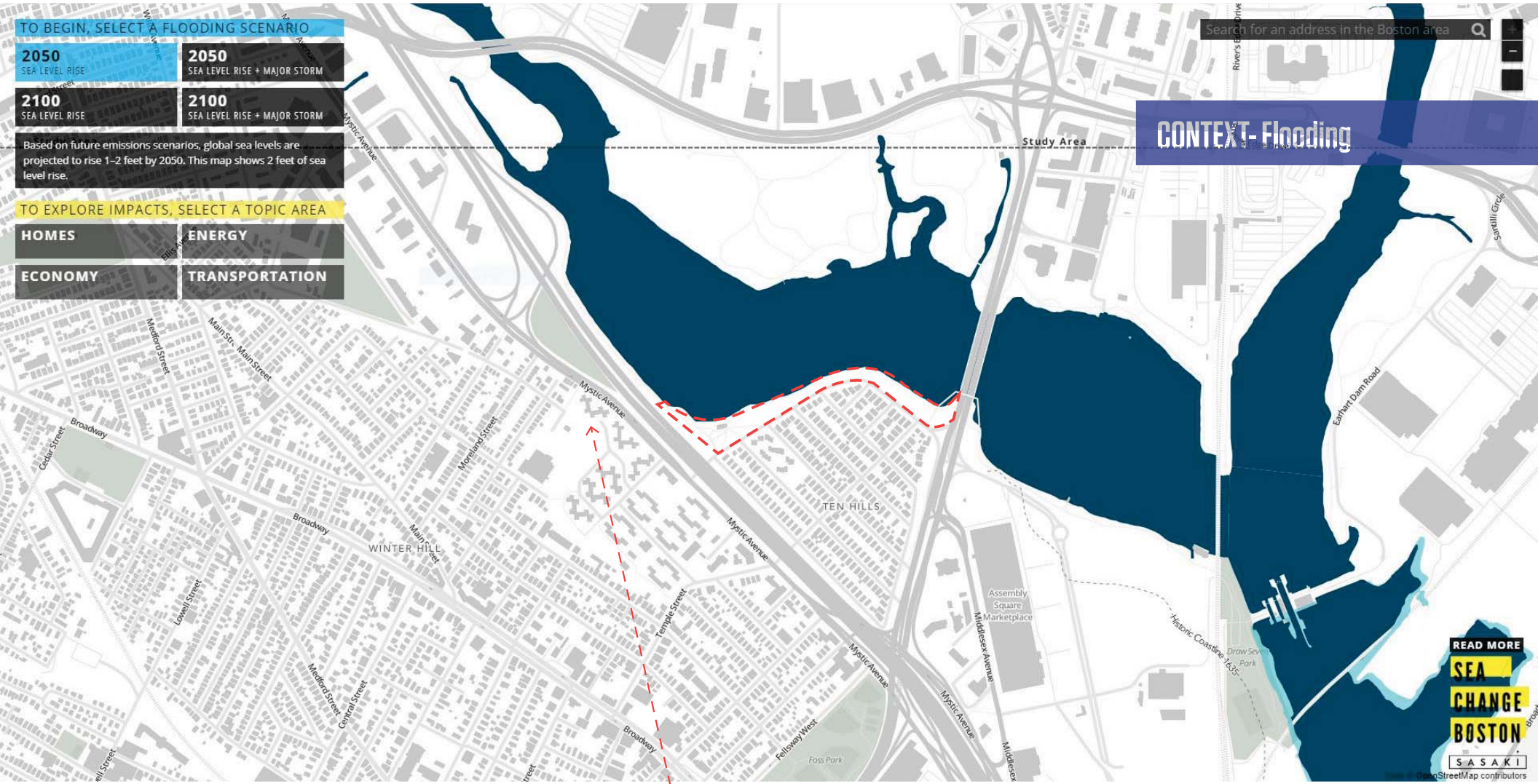
TO EXPLORE IMPACTS, SELECT A TOPIC AREA

HOMES

ENERGY

ECONOMY

TRANSPORTATION



--- Mystic Avenue

READ MORE

SEA CHANGE BOSTON

SASAKI

Map data © OpenStreetMap contributors

Search for an address in the Boston area



CONTEXT-Flooding

TO BEGIN, SELECT A FLOODING SCENARIO

2050
SEA LEVEL RISE

2100
SEA LEVEL RISE

This map shows potential flooding from a major storm in 2050. Boston could experience 7 feet of flooding (2 feet of sea level rise + 5 feet of storm surge = 7 feet of flooding).

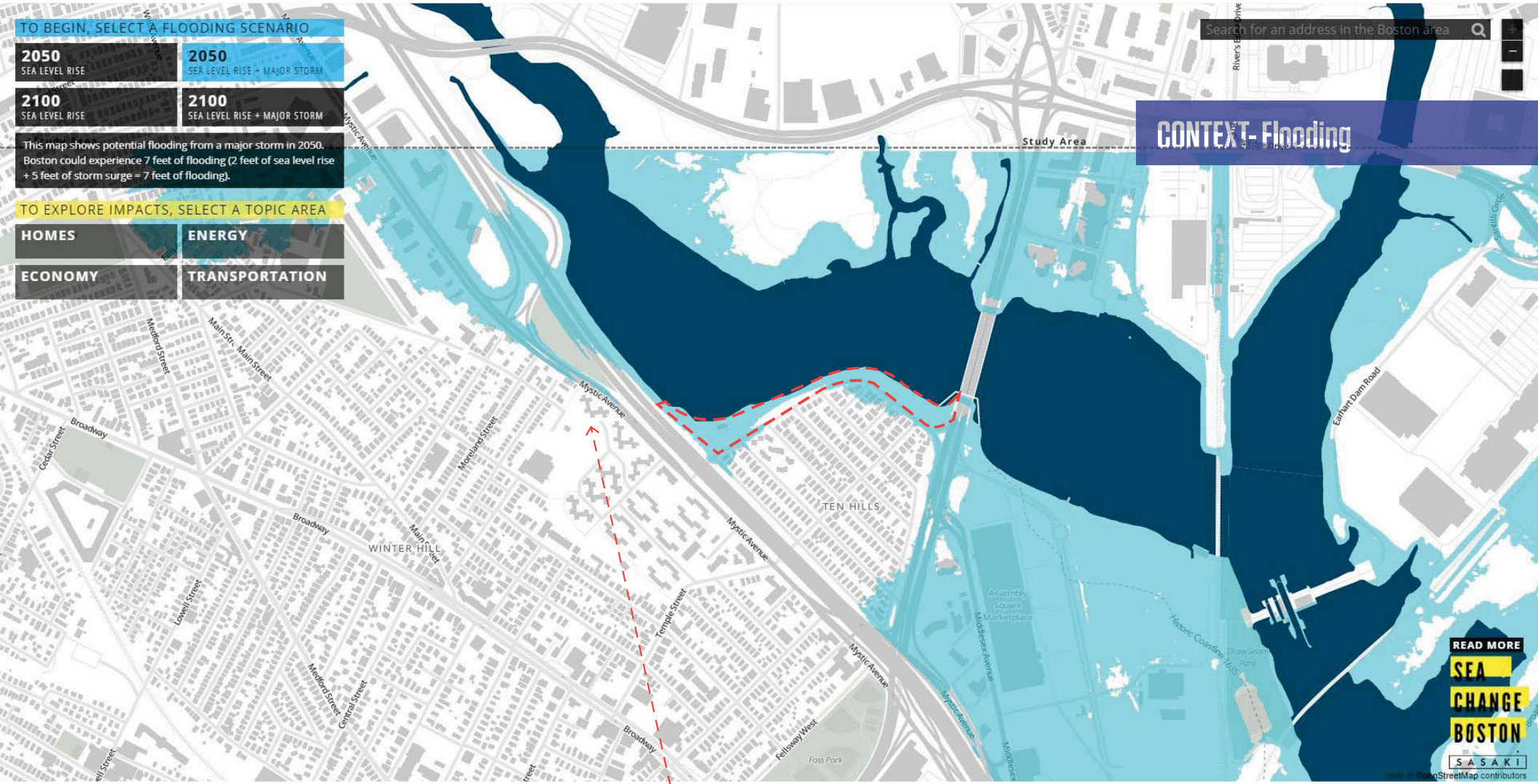
TO EXPLORE IMPACTS, SELECT A TOPIC AREA

HOMES

ECONOMY

ENERGY

TRANSPORTATION



Mystic Avenue

READ MORE
**SEA
CHANGE
BOSTON**

SASAKI

Map data © OpenStreetMap contributors

TO BEGIN, SELECT A FLOODING SCENARIO

- 2050**
SEA LEVEL RISE
- 2050**
SEA LEVEL RISE + MAJOR STORM
- 2100**
SEA LEVEL RISE
- 2100**
SEA LEVEL RISE + MAJOR STORM

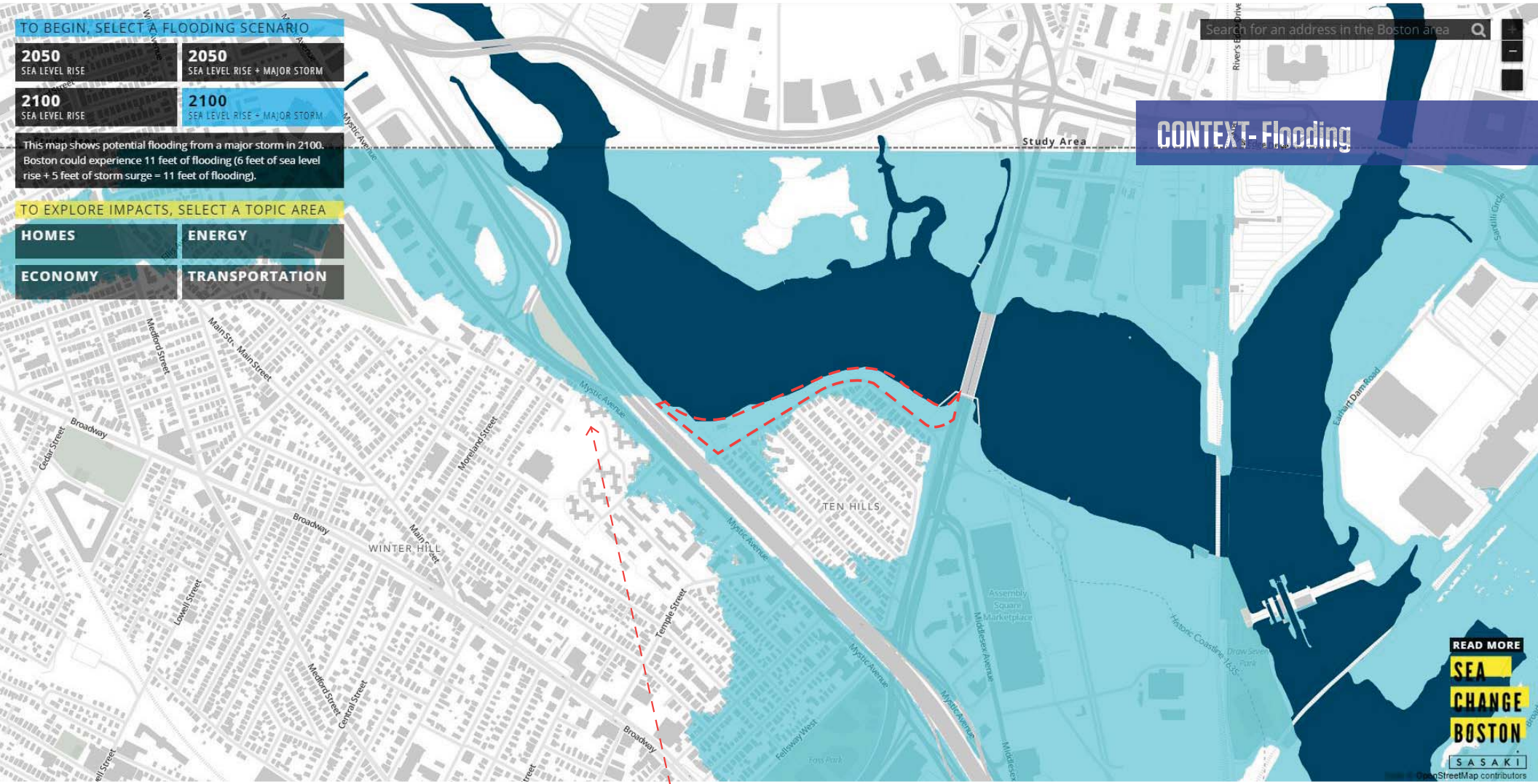
This map shows potential flooding from a major storm in 2100. Boston could experience 11 feet of flooding (6 feet of sea level rise + 5 feet of storm surge = 11 feet of flooding).

TO EXPLORE IMPACTS, SELECT A TOPIC AREA

- HOMES**
- ENERGY**
- ECONOMY**
- TRANSPORTATION**

Search for an address in the Boston area

CONTEXT-Flooding

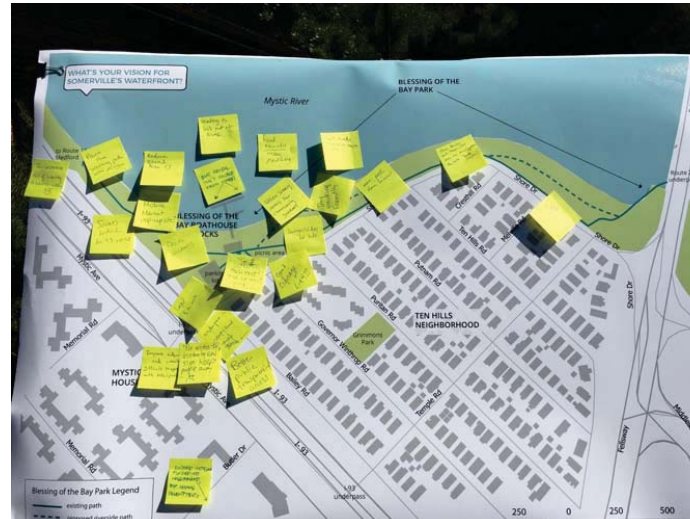
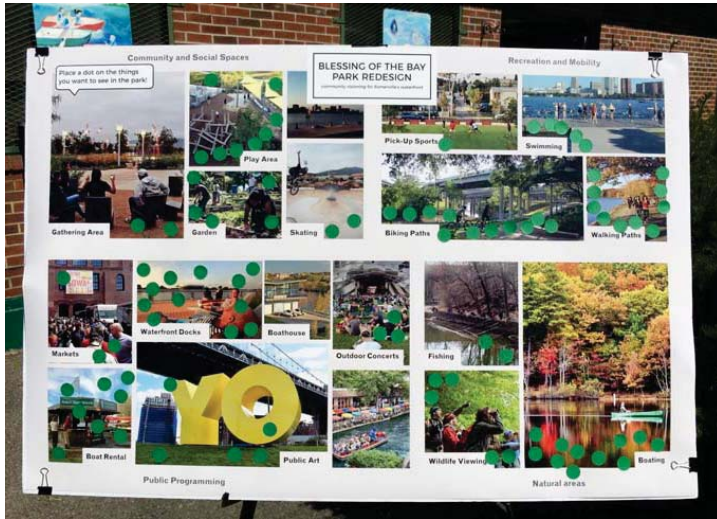


Mystic Avenue

READ MORE
SEA
CHANGE
BOSTON

SASAKI

Map data © OpenStreetMap contributors



MyRWA
 SURVEY & DATA GATHERED
 WORK TO DATE

Public outreach by MyRWA
 Group works
 surveys online and in person
 People engage in on site events
 Mystic boating outreach
 Mobile market tenants Assoc
 to see photos for to door

= 1,072 Engagements to date

● i in n i i n n i i n

egat e

- nde t ed not ma nta ned
- o t on ate , , dog goose oo
- o d
- oat o se ee s ate
- not eno g e s to ate
- not eno g g t ng

MyRWA
DATA COLLECTED

WORK TO DATE

● i in n i i n n i i n

o s t e

- m o t a n t t a s o n n e t o n s d o g a n g
- o a t n g
- n t e e s t n g n a t e a n d d e
- n e g o o d e e
- o e n a n d n t t e e d , a s s e o e n s a e

MyRWA
DATA COLLECTED

WORK TO DATE

● F

P

I

G



A B



M P

IDEAS GENERATED

WORK TO DATE

in i in



IDEAS GENERATED

WORK TO DATE

i m ni i
in
fishing & swimming



IDEAS GENERATED

WORK TO DATE

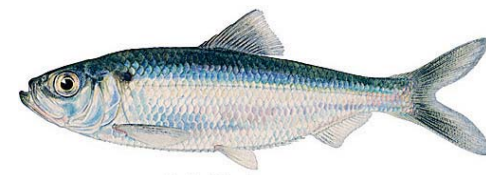
i m ni i
fishing & casual
get-down areas



IDEAS GENERATED

WORK TO DATE

i i n
in i n m



Blueback Herring (*Alosa aestivalis*)



Alewife (*Alosa pseudoharengus*)



IDEAS GENERATED

WORK TO DATE

im m
n in



IDEAS GENERATED

WORK TO DATE

i in in



IDEAS GENERATED

WORK TO DATE

in





IDEAS GENERATED

WORK TO DATE

in
i ni in



IDEAS GENERATED

WORK TO DATE





IDEAS GENERATED

WORK TO DATE

i





IDEAS GENERATED

WORK TO DATE

m

n

i



IDEAS GENERATED

WORK TO DATE

signage/ wayfinding



IDEAS GENERATED

WORK TO DATE

m n i



IDEAS GENERATED

WORK TO DATE

m n i i

raw e en o er ie



IDEAS GENERATED

WORK TO DATE

i i n i n



HEALEY MYSTIC MASTER PLAN

WORK TO DATE

Marc
Groniewicz

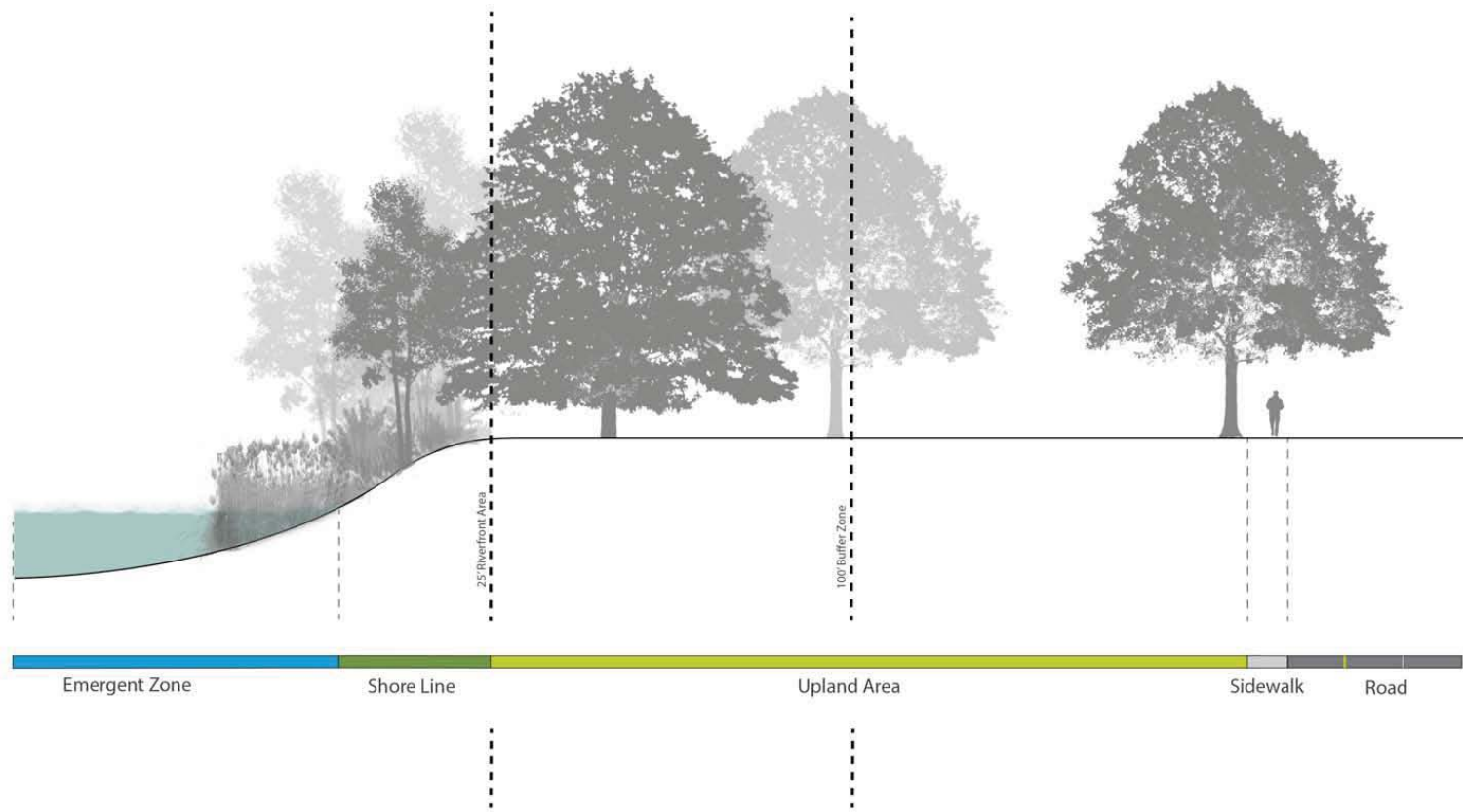


**FLOODABLE PARK
PRECEDENTS**

Mi Race Par
esigner M A
o b s



PRECEDENTS



UTILIZE TOPOGRAPHY

EXISTING

essing o t e ay
 esigner s oots
 ections



UTILIZE TOPOGRAPHY

FUTURE OPTIONS

essing o t e ay
 esigner s oots
 ections



VEGETATION

PRECEDENTS



roo y ri ge Par
esigner M A
roo yn



VEGETATION/ MEADOWS

PRECEDENTS

ong oc Par
esigner
Ree i erbran
eacon

on on y ic Par
esigner
ara Pierce ige nnett

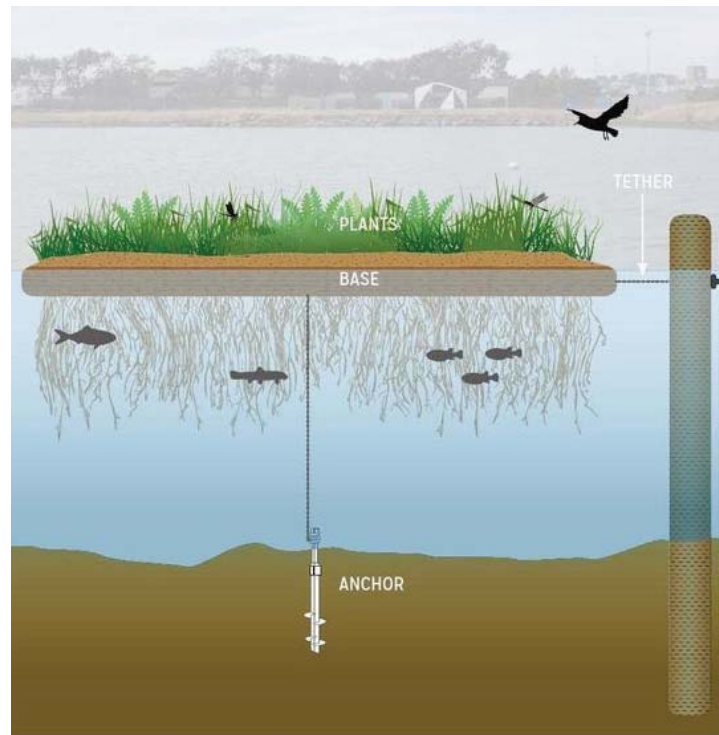


VEGETATION MANAGEMENT

PRECEDENTS



ares Ri er Watertown MA



ENHANCED ECOLOGY
PRECEDENTS



LAWN/ FLEXIBLE EVENT SPACE

PRECEDENTS

essing o t e ay o erie



LAWN/ FLEXIBLE SPACE

PRECEDENTS

ea er a e



LAWN FLEXIBLE EVENT SPACE

PRECEDENTS



LAWN/ FLEXIBLE EVENT SPACE

PRECEDENTS



Parsona PA



BOATHOUSE

PRECEDENTS



Community Rowing Center, Brighton MA
Long Pond Park, Beacon
Riverside, Gloucester MA



RESTROOM

PRECEDENTS

Temporary Porta Potty
Options



**SMALL CAFE
PRECEDENTS**

i a e
oston MA



**FOOD KIOSK
PRECEDENTS**





BOAT RAMP- LAUNCH

PRECEDENTS

roo y ri ge Par
esigner M A
roo yn



BOAT LAUNCH/ RAMP

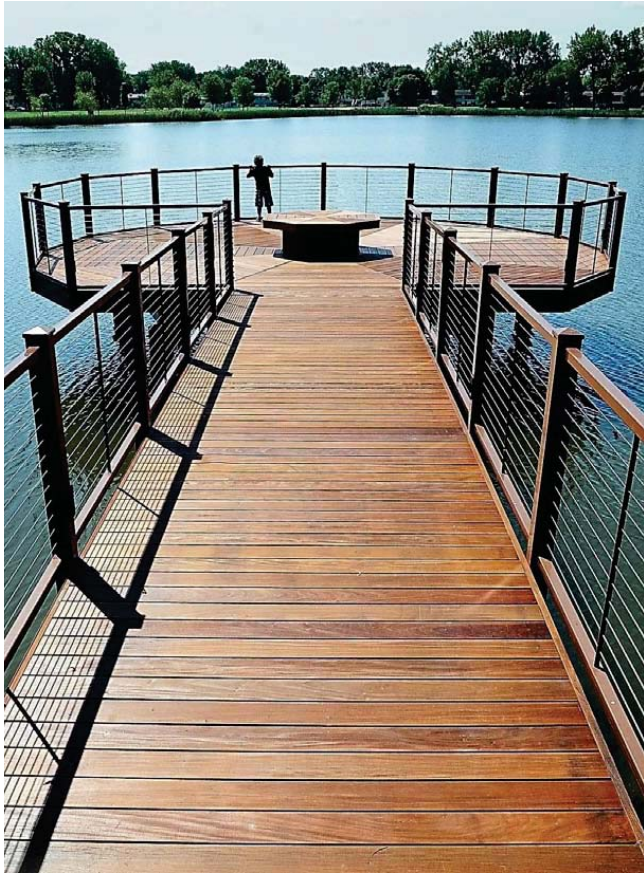
PRECEDENTS



SWIMMING DOCK

PRECEDENTS

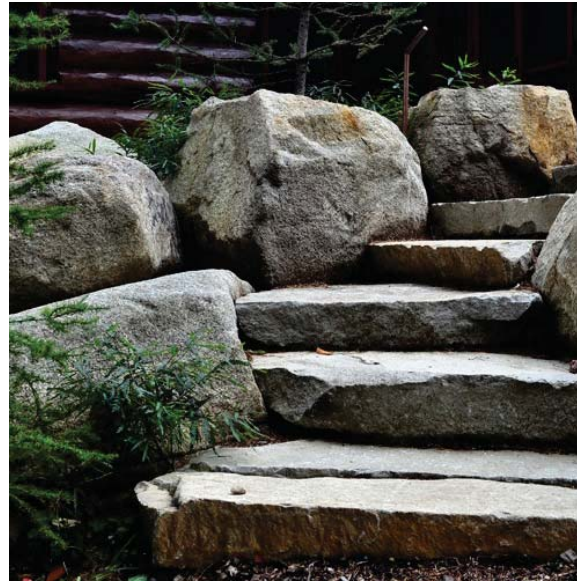
ares Ri er
a bri ge MA



FISHING PIER

PRECEDENTS

et ring a e Man ato M
o Rig t ityPar Wa on M
otto Rig t a e o o is M



INFORMAL GETDOWNS

PRECEDENTS

abirs aw Par
on ers



© 2017 Jim Metzger Photographer



© 2017 Jim Metzger Photographer



PLAYGROUND - NATURAL

PRECEDENTS



roo y ri ge Par
esigner M A
roo yn



PUBLIC ART
PRECEDENTS

o ye oasts yannis
esigner s oots
yannis MA



PUBLIC ART/ PLATFORM
PRECEDENTS

o ye oasts yannis
esigner s oots
yannis MA

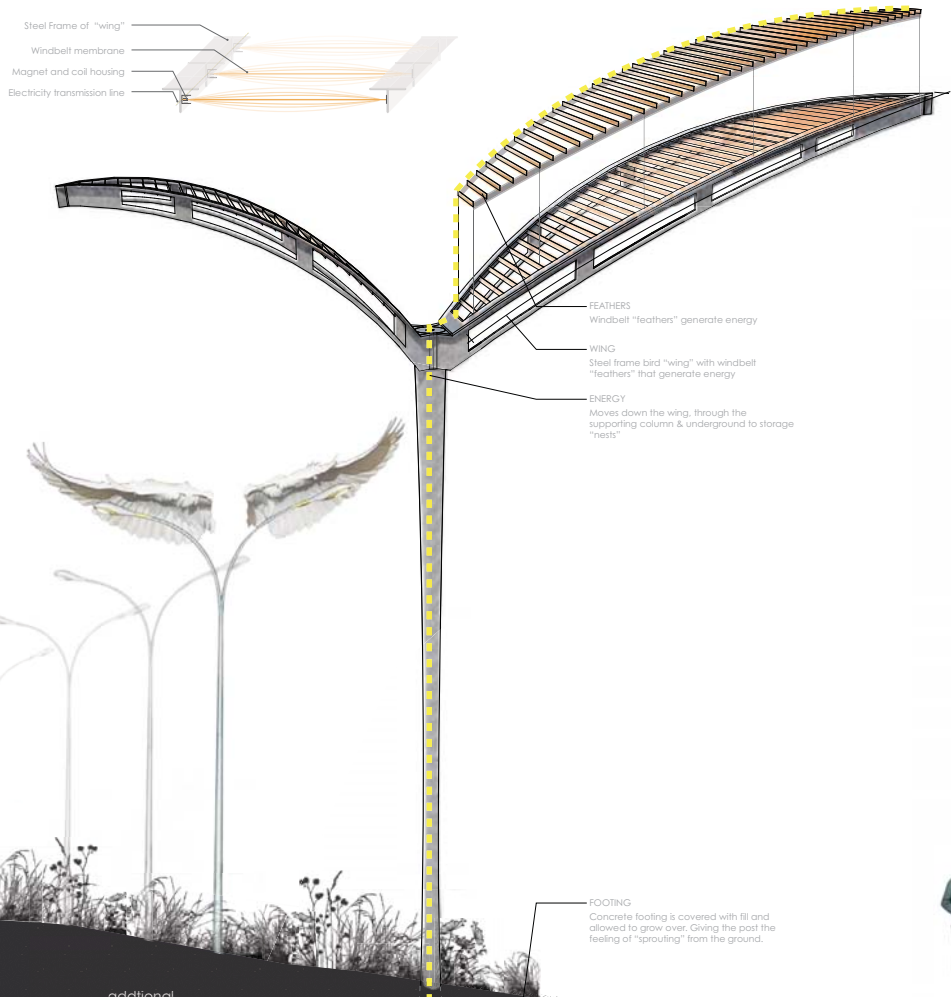


PUBLIC ART

PRECEDENTS



Mic a e McGi is oyotes

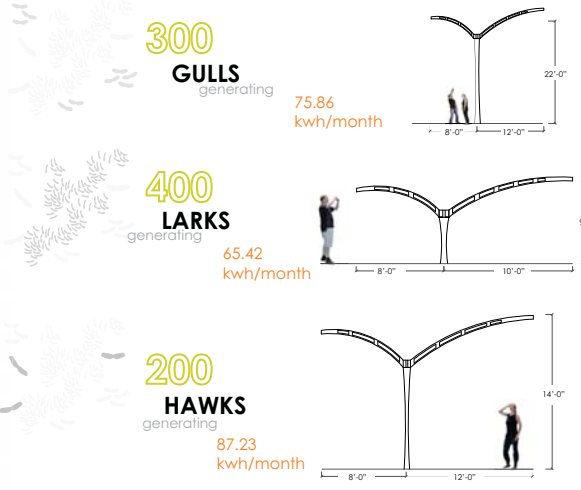


ROBUST and ROUSING

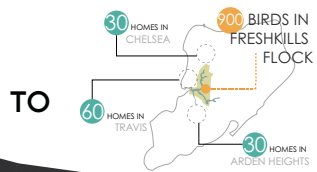
production
curiosity

The bird operates at both the human and infrastructural scale. Each bird generates approximately **2.83kwh/day.**

Windbells attach to the wing's steel structure - a readily deployable renewable energy technology that can be applied at many scales. The FreshKills Flock exemplifies this scalability - it could be used in part to power a home or in whole to power an entire neighborhood.



ART + ENERGY PRECEDENTS



ENERGY MOVES TO **COLLECTION "NESTS"**
 THROUGH UNDERGROUND WIRES
 10,000 kWh Battery & DC to AC Transformer

AG res is Par o etition
 esign eaannonAr s a ra asset
 an eby a an ae

23025028



ART + ENERGY

PRECEDENTS

Win ests
esigner ra t res
in co aboration wit t e
an Art Generator nstit te



ART
PRECEDENTS

Le Centre des Arts de la Ville de
L'artiste : Dan Flavin



ART
PRECEDENTS

ent es Pais eyi
Artist an orson



CONNECTIONS

PRECEDENTS

tarry ig t oston
Water M ra P ia e ia

BANNER ACTIVITY

● PROGRAM

W

● IDENTITY

NATURAL ENVIRONMENT HISTORY

PEOPLE EVENTS ...

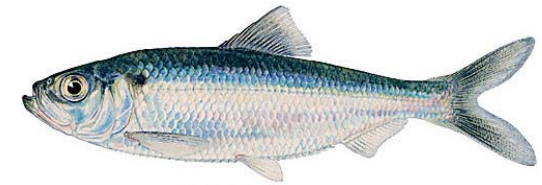
W

ACTIVITIES



IDENTITY

EXISTING CONDITIONS



Blueback Herring (*Alosa aestivalis*)

BANNER ACTIVITY






● M

YOU ● I

ACTIVITIES

MAPPING ACTIVITY



	K	P	D
	V	—	
	S		T C

ACTIVITIES

MAPPING ACTIVITY



 K P D

 V —

 S T C



N P R

  S



 docks/ fishing pier



 lawn

 natural area

 picnic area

 gathering space

ACTIVITIES

MAPPING ACTIVITY

● n i n
 P N
 L P E

● R
● I ● I

ACTIVITIES

Blessing of the Bay Public Meeting

Marc

Questions?
kate@offshootsinc.com



Mystic Tenant
Association

