

WELCOME!

TO THE CHARLESTOWN LOWER MYSTIC OPEN HOUSE



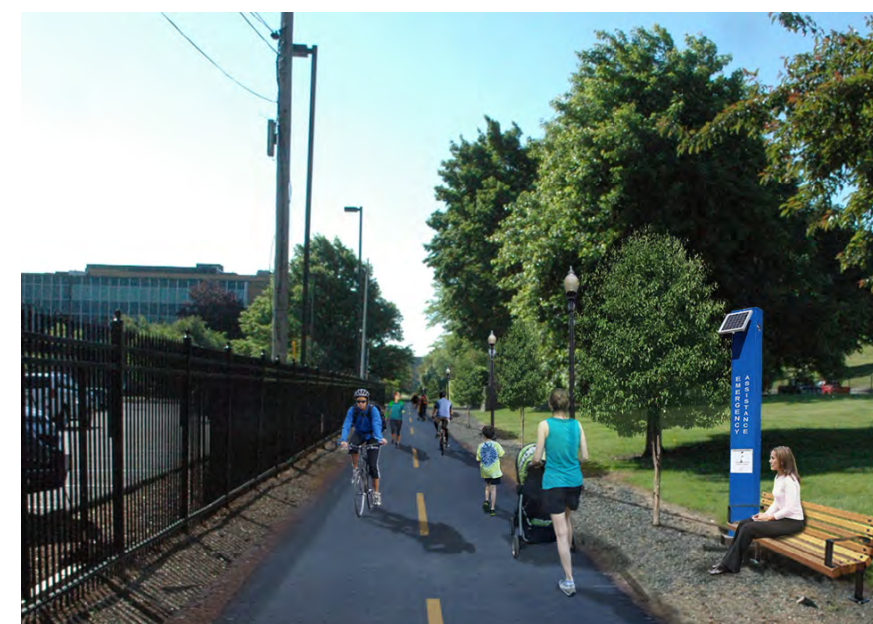
The Charlestown waterfront along the Mystic River remains largely hidden and inaccessible - a stark contrast to the east side which has seen significant investments in the Harborwalk and other waterfront parks. North Charlestown, located between Sullivan Square and the Little Mystic Channel and Tobin Bridge, lacks contiguous waterfront access and walking and biking routes that connect to regional greenway networks. Furthermore, the low-lying lands of Sullivan Square and the Autoport are susceptible to coastal and inland flooding in the near-term. Through a robust outreach process in 2018, we seek to create a shared-vision for new and enhanced open spaces and active transportation routes that connect people to the Lower Mystic River. This community-driven effort will build off of the work of Climate Ready Boston, addressing flooding and heat island impacts, while providing the co-benefits of public amenities.



TIMELINE

2013

SULLIVAN SQ/CHARLESTOWN GREENWAY
EMERALD NETWORK STUDY FOR A SHARED USE PATH



NELSON\NYGAARD

2014

ASSEMBLY ROW PROJECT
COMPLETE: ASSEMBLY ROW MIXED USE DEVELOPMENT
NEW ORANGE LINE STOP: ASSEMBLY STATION

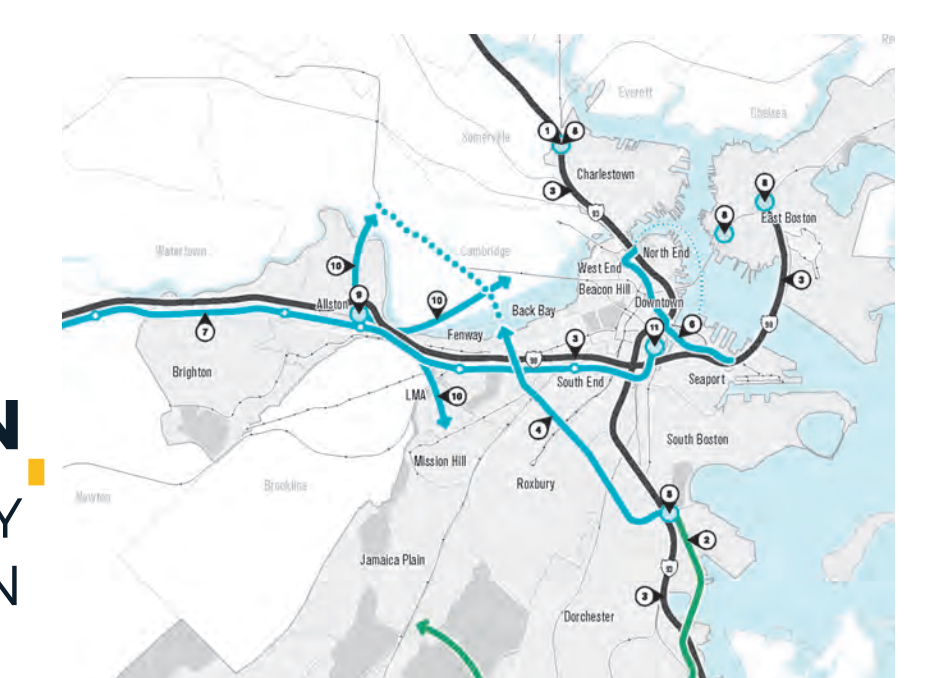


STOSS



2017

CLIMATE READY EAST BOSTON & CHARLESTOWN PROJECT
PLANNING STUDY IDENTIFYING RESILIENT OPPORTUNITIES IN CHARLESTOWN



BTD

2017

GO BOSTON 2030 SUBMISSION
VISION FRAMEWORK COMPLETED BY CITY
TRANSPORTATION CLIMATE ADAPTATION

2018

RUTHERFORD AVE/ SULLIVAN SQ PROJECT
PEDESTRIAN CORRIDORS & SAFETY IMPROVEMENTS
CONSTRUCTION ANTICIPATED 2020



BTD, BROWN, RICHARDSON + ROWE, BPDA, TETRA TECH

2018-2019

MBTA SEAWALL (IN PROGRESS)
SHORELINE STABILIZATION
CONSTRUCTION STARTED



DCR, MBTA, EPSILON AND HATCH

WHAT'S NEXT?

**HELP US ENVISION THE FUTURE
OF THE LOWER MYSTIC!**

QUESTIONS? CONTACT AMBER CHRISTOFFERSEN AT amber.christoffersen@mysticriver.org

Partners include Boston Harbor Now, Charlestown Waterfront Coalition, City of Boston, The Emerald Network, The Flatley Company, Friends of the Charlestown Navy Yard, Stoss, and WalkBoston. Funding is provided by the Barr Foundation.

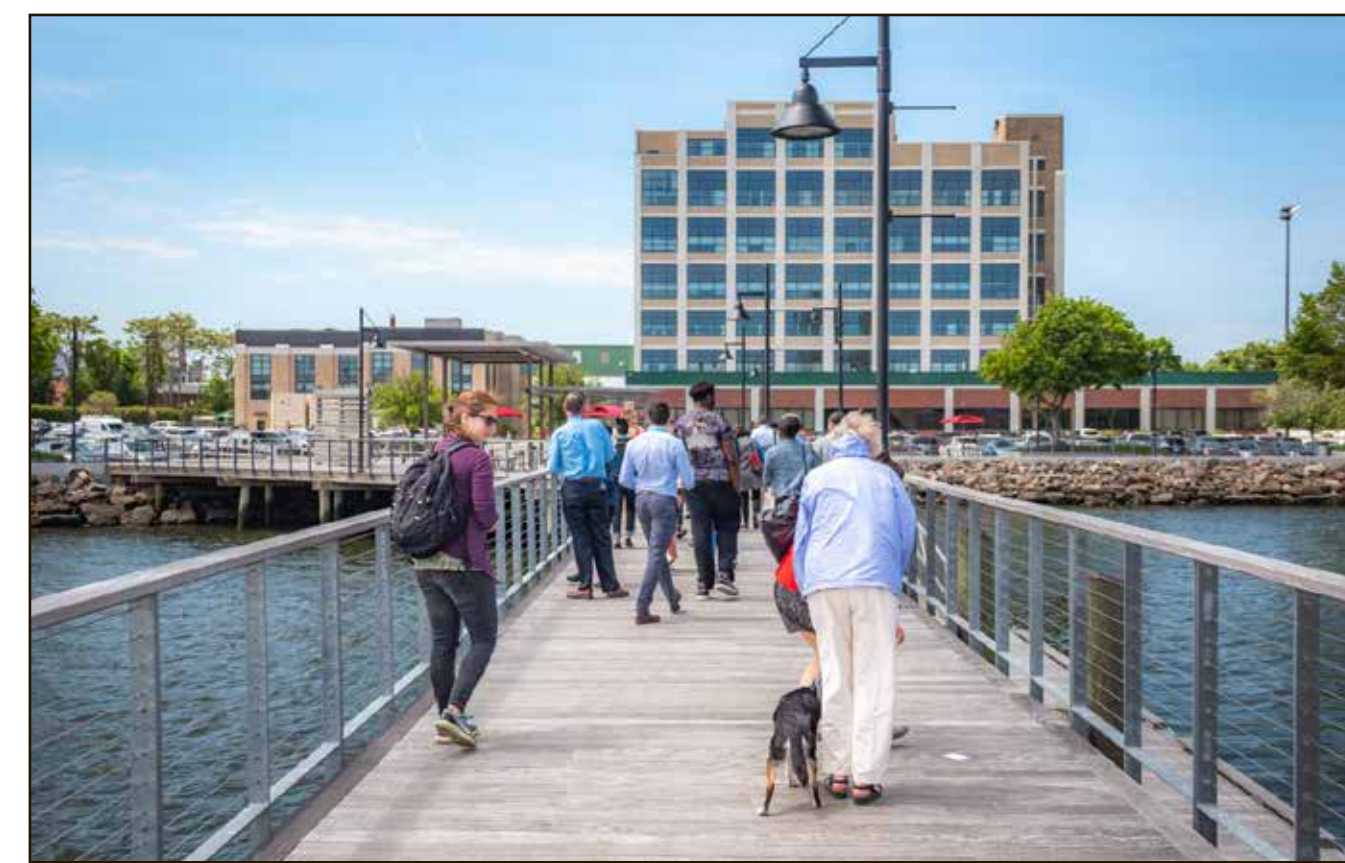
PAST ENGAGEMENT

We've reached out to hundreds of Charlestown residents to find out what people think about the Lower Mystic River waterfront - from favorite neighborhood spots to preferred open space amenities.

Open House 1: June 14, 2018



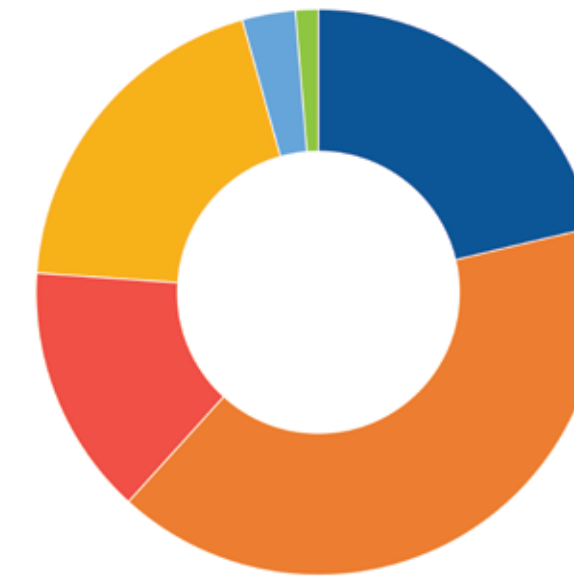
BHN Tour: June 30, 2018



TRAIL CONNECTOR?

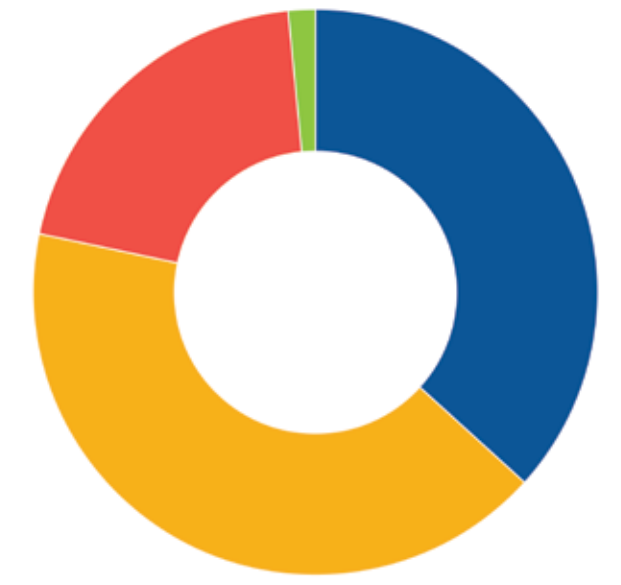
IF A TRAIL EXISTED CONNECTING SCHRAFFT'S TO SPAULDING...

HOW OFTEN WOULD YOU USE IT?



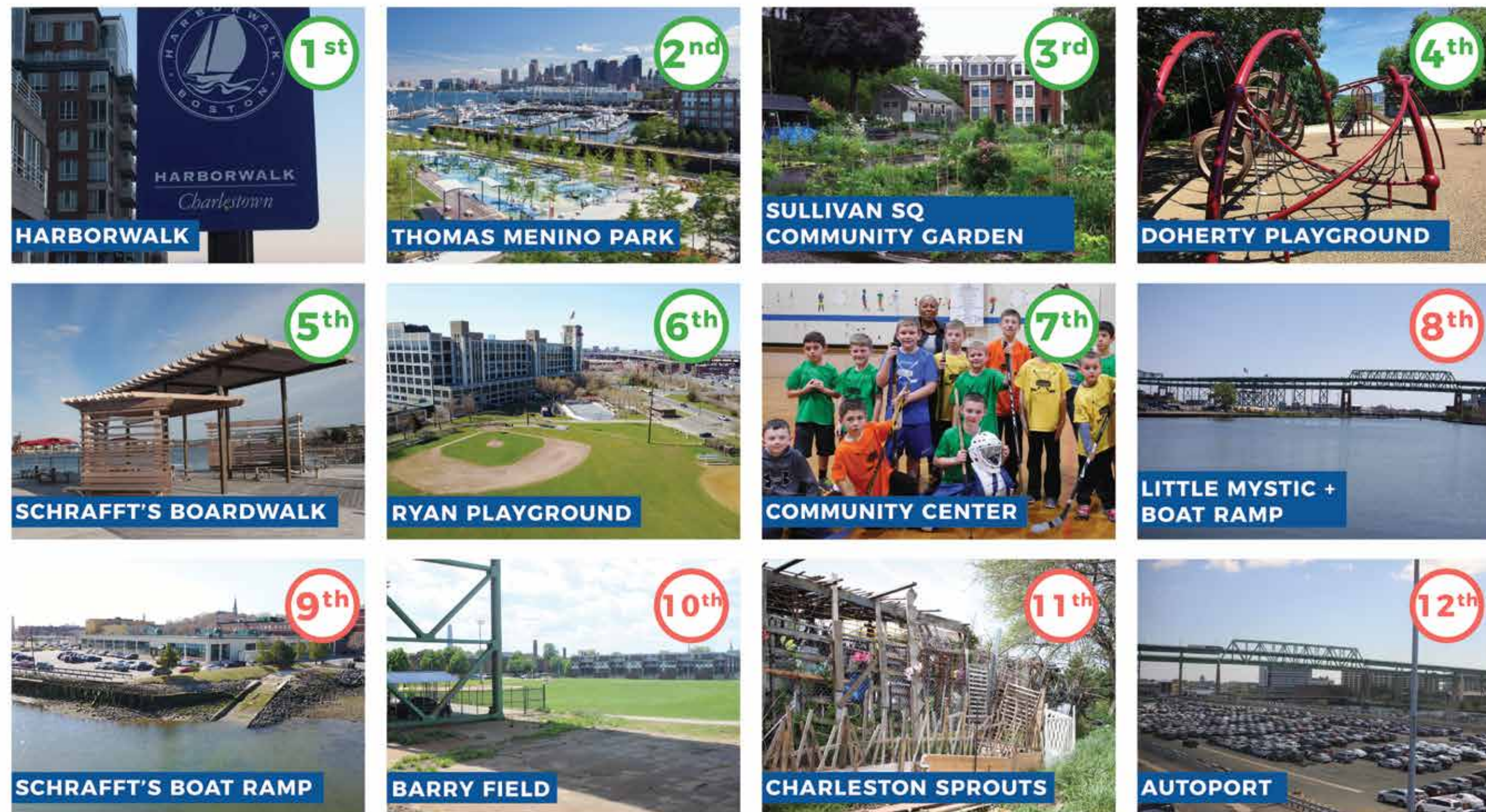
DAILY
WEEKLY
MONTHLY
A FEW TIMES A YEAR
I WOULD NOT USE IT
OTHER

HOW WOULD YOU USE IT?

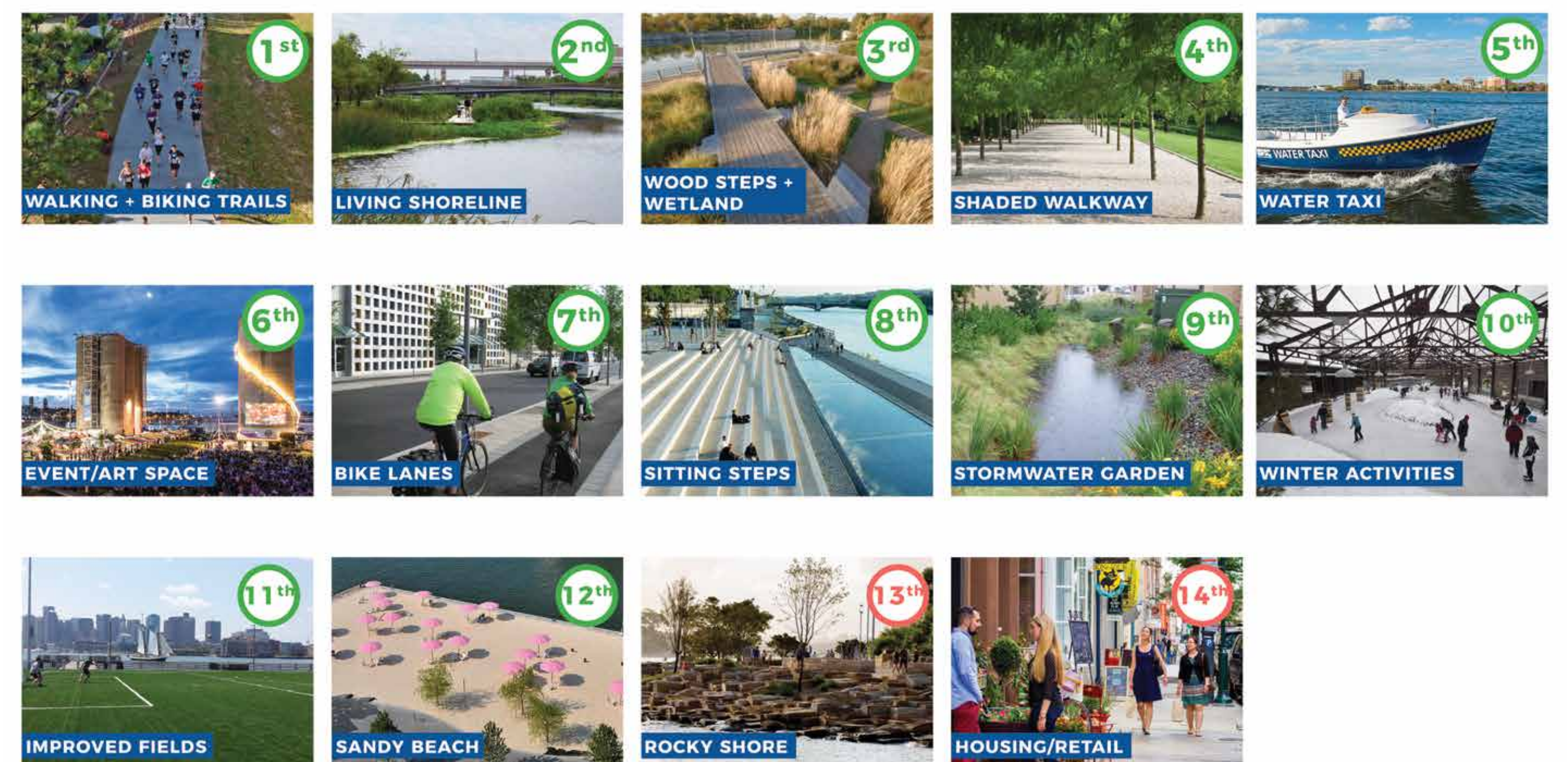


WALK
BIKE
RUN
OTHER

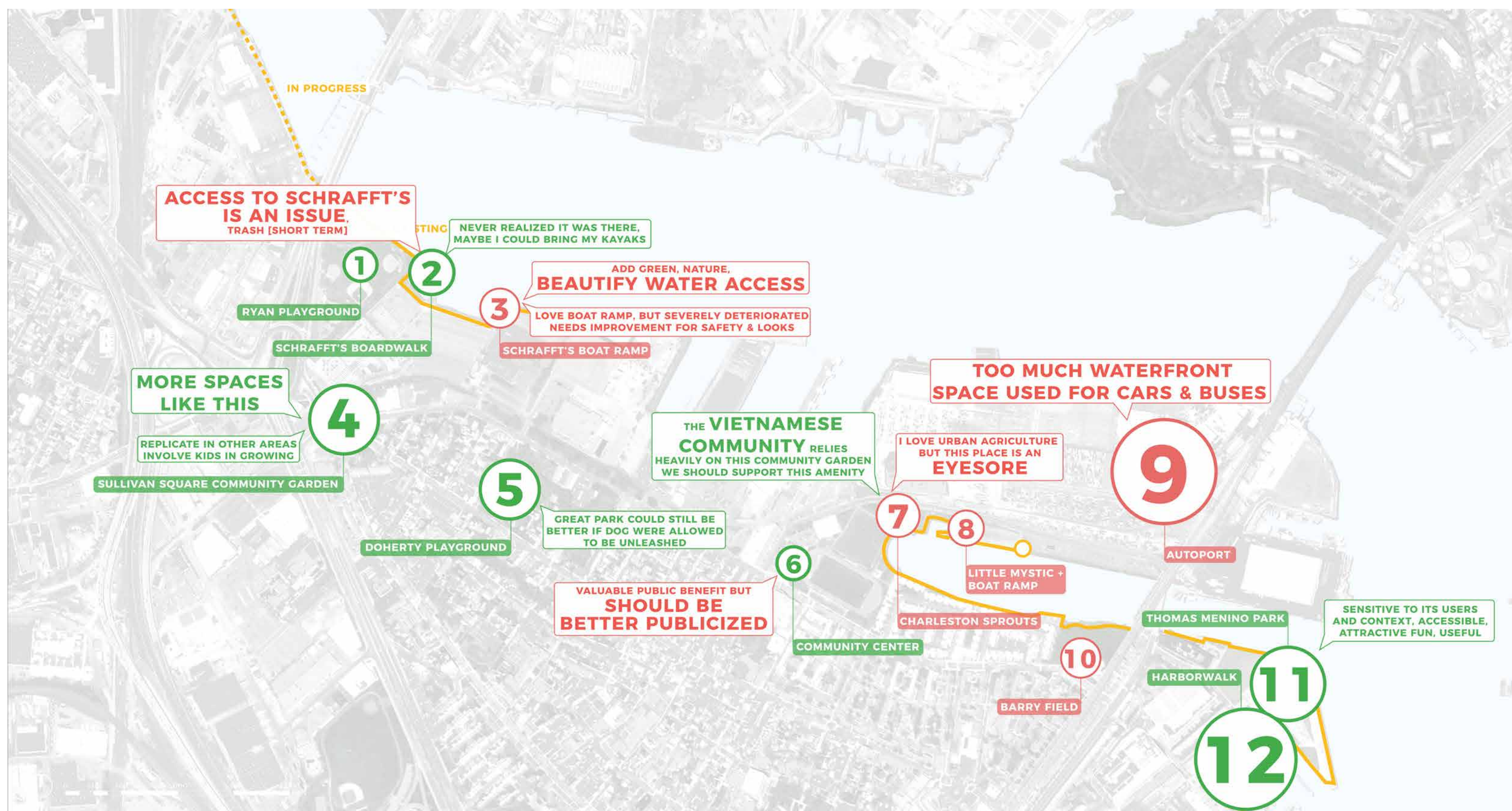
EXISTING SPACES?



NEW SPACES?



WHAT DO YOU THINK OF THESE SPACES? WHY?



- 1 RYAN PLAYGROUND
- 2 SCHRAFFT'S BOARDWALK
- 3 SCHRAFFT'S BOAT RAMP
- 4 SULLIVAN SQUARE COMMUNITY GARDEN
- 5 DOHERTY PLAYGROUND
- 6 COMMUNITY CENTER
- 7 CHARLESTON SPROUTS
- 8 LITTLE MYSTIC + BOAT RAMP
- 9 AUTOPORT
- 10 BARRY FIELD
- 11 THOMAS MENINO PARK
- 12 HARBORWALK

OPEN SPACE IMPROVEMENTS!

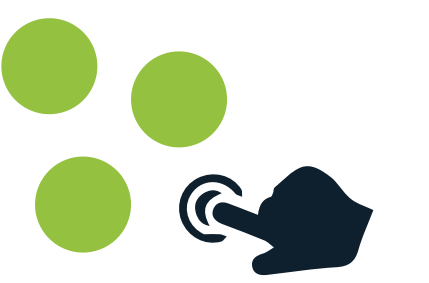
WHAT INTERVENTIONS DO YOU LOVE?



Much of the community recommended improvements around the Little Mystic Channel. Here is a vision of what these improvements could consist of.

WHAT DO YOU THINK?

STEP 1 Put **three green stickers** beneath the images you love.



STEP 2 Put **one red sticker** beneath the image you dislike.



DOG PARK

Grid of 20 empty circles for sticker placement.



IMPROVED BARRY PLAYGROUND

Grid of 20 empty circles for sticker placement.



RAIL TO TRAIL

Grid of 20 empty circles for sticker placement.



RENOVATED PLAZA

Grid of 20 empty circles for sticker placement.



FLOATING POOL AND PARK

Grid of 20 empty circles for sticker placement.



IMPROVED BOAT LAUNCH

Grid of 20 empty circles for sticker placement.



FLOATING WETLAND

Grid of 20 empty circles for sticker placement.



LIVING SHORELINE

Grid of 20 empty circles for sticker placement.



STORMWATER GARDEN

Grid of 20 empty circles for sticker placement.



ADDITIONAL FERRY STOP

Grid of 20 empty circles for sticker placement.



TEMPORARY EVENT + INSTALLATION

Grid of 20 empty circles for sticker placement.



IMPROVED STREET

Grid of 20 empty circles for sticker placement.

4

CORRIDOR IMPROVEMENTS!

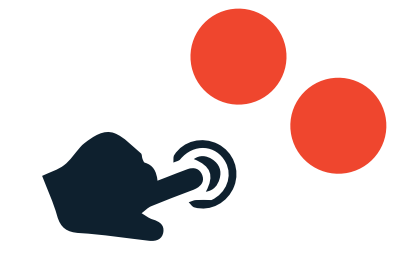
WHAT INTERVENTIONS DO YOU LOVE?

Below are various ways to improve corridors such as Medford Street and Terminal Street. These interventions can connect the existing harborwalk, improve corridors for pedestrians and cyclists, and maintain industrial access.

STEP 1 Put **four green stickers** beneath the images you love.



STEP 2 Put **two red stickers** beneath the image you dislike.



TRANSPORTATION IMPROVEMENTS



PEDESTRIAN CROSSING



SEPARATED SHARED TRAIL



BIKE LANE



ON-STREET PARKING

Grid of 30 empty circles for sticker placement.

Grid of 30 empty circles for sticker placement.

Grid of 30 empty circles for sticker placement.

Grid of 30 empty circles for sticker placement.

TRAIL AMENITIES



PLAY SPACE



ACTIVE RECREATION



GAMES



STREET ART

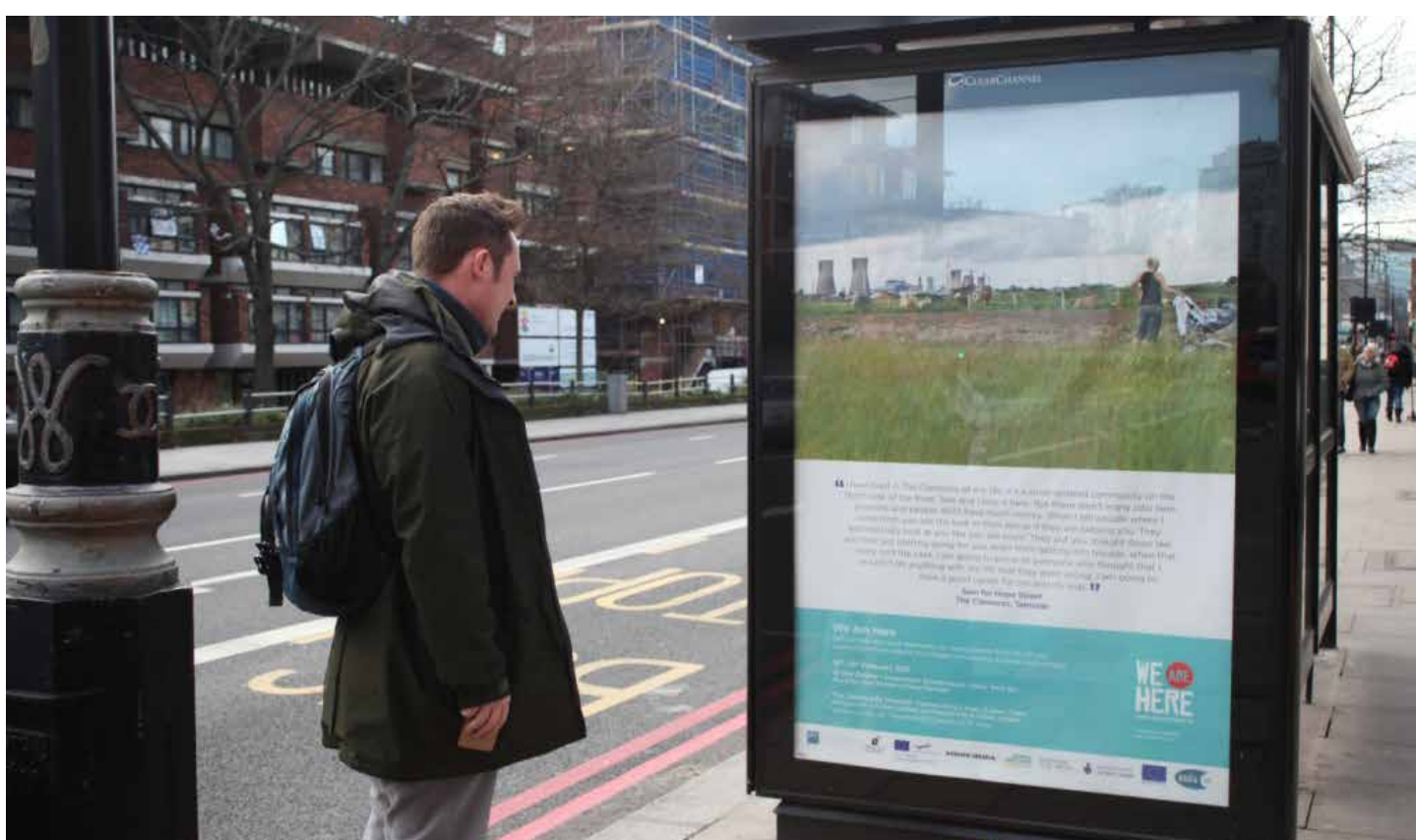
Grid of 30 empty circles for sticker placement.

Grid of 30 empty circles for sticker placement.

Grid of 30 empty circles for sticker placement.

Grid of 30 empty circles for sticker placement.

COMMUNITY RESOURCES



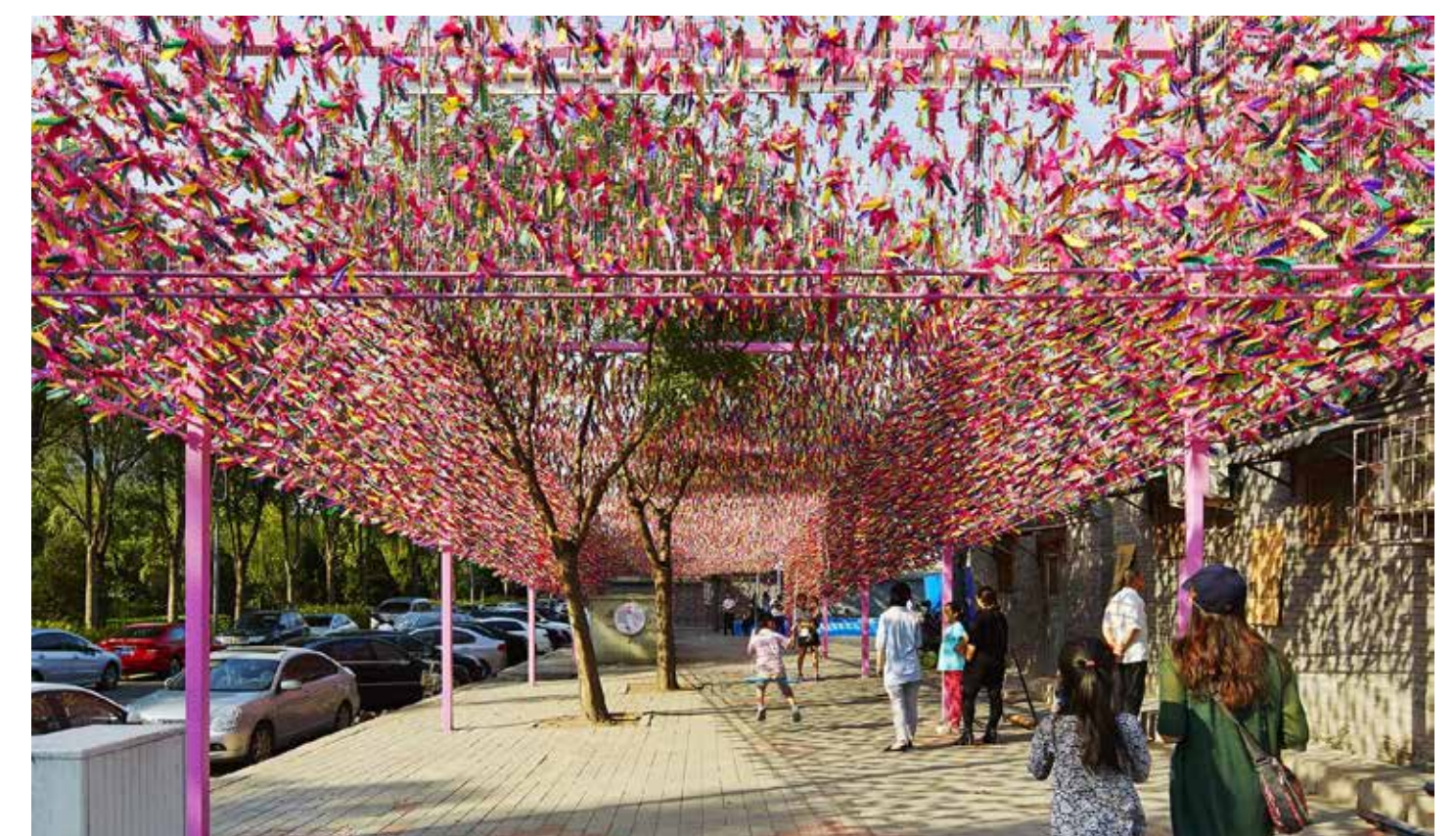
COMMUNITY BULLETIN BOARD



WAYFINDING



TRANSPORTATION RENTAL



SHADE STRUCTURE

Grid of 30 empty circles for sticker placement.

Grid of 30 empty circles for sticker placement.

Grid of 30 empty circles for sticker placement.

Grid of 30 empty circles for sticker placement.

STORMWATER MANAGEMENT



SHARED TRAIL



BIOSWALE



STREET TREES



MEDIAN PLANTING

Grid of 30 empty circles for sticker placement.

Grid of 30 empty circles for sticker placement.

Grid of 30 empty circles for sticker placement.

Grid of 30 empty circles for sticker placement.



OPEN SPACE IMPROVEMENTS

28
RESPONSES

Mystic River
WATERSHED ASSOCIATION



A COMMUNITY MEMBER ADDED 'IMPROVED/NEW SPORTS FIELDS,' WHICH THEN RECEIVED 3 VOTES. IF COUNTED AGAINST OTHER IMPROVEMENTS, IT WOULD PLACE 7TH, BETWEEN DOG PARK AND IMPROVED BARRY PLAYGROUND.

'C-TOWN POST OFFICE IS SEEKING A NEW LOCATION. IT WOULD DRAW THE COMMUNITY TO THIS LOCATION!'

'ICE-SKATING! THERE'S A LACK OF AVAILABLE "ICE TIME"'

'CONNECTION UNDER RT 99 VIA BOARDWALK'



CORRIDOR IMPROVEMENTS



COMMUNITY MEMBERS ADDED 'TRANSPORTATION INFRASTRUCTURE, WATER FERRIES, ETC.' AND 'FIX STREETS! REPAIR IT, (POTHOLE, ETC.)'