

TODAY, THE HARBORWALK IS DISCONNECTED

IN PROGRESS

EXISTING HARBORWALK

EXISTING HARBORWALK



THE DESIGNATED PORT AREA LIMITS ACCESS TO THE MYSTIC RIVER

An aerial photograph of a waterfront area. A large, irregularly shaped area is shaded in a semi-transparent red color, representing the Designated Port Area (DPA). A yellow line follows the perimeter of this red area, indicating the boundary. The background shows a dense urban landscape with buildings, roads, and green spaces. The Mystic River is visible on the right side of the image.

The DPA, which is crucial for water-dependent industrial use, limits public access to the waterfront.

HOW CAN WE CONNECT THE HARBORWALK?

An aerial photograph of a harbor area. A large, irregularly shaped area is shaded in a semi-transparent red color, representing a Designated Port Area (DPA). A yellow line traces a path along the waterfront, representing the harborwalk. The path starts on the left, goes south, then east, then south again, and finally east towards the right. A dotted yellow line follows a similar path but is slightly offset from the solid yellow line. Two white circles are placed on the yellow line: one at the southern end of the first segment and another at the southern end of the second segment. The map shows buildings, streets, and green spaces. Labels 'TERMINAL ST' and 'MEDFORD ST' are visible on the map.

Street and open space improvements can be used to connect the existing harborwalk, while still respecting the DPA boundary.

SCHRAFFT'S CANDY & CHOCOLATE COMPANY FACTORY: 1928-1984



BOSTON ELEVATED RAILROAD TERMINATING AT SULLIVAN SQUARE, 1906



DEWEY BEACH SWIMMING SPOT: 1898-1957



2018: MYSTIC RIVER'S LARGEST RECORDED HERRING RUN IN RECENT HISTORY



TOBIN BRIDGE: LARGEST BRIDGE IN NEW ENGLAND 2 MI SPAN



CHARLESTOWN PREVIOUSLY CONNECTED TO MAINLAND BY AN ISTHMUS "CHARLESTOWN NECK" BEFORE IT WAS FILLED IN WITH LAND



BOSTON AUTOPORT WORKS ON 64,000 CARS/YR

DOHERTY PLAYGROUND DESIGNED BY OLMSTED IN 1895 NAT'L REGISTER HISTORIC PLACE



FORTY FLIGHTS: 70 STEP CLIMB VIEWS OF BOSTON



HISTORIC HIGH TIDE

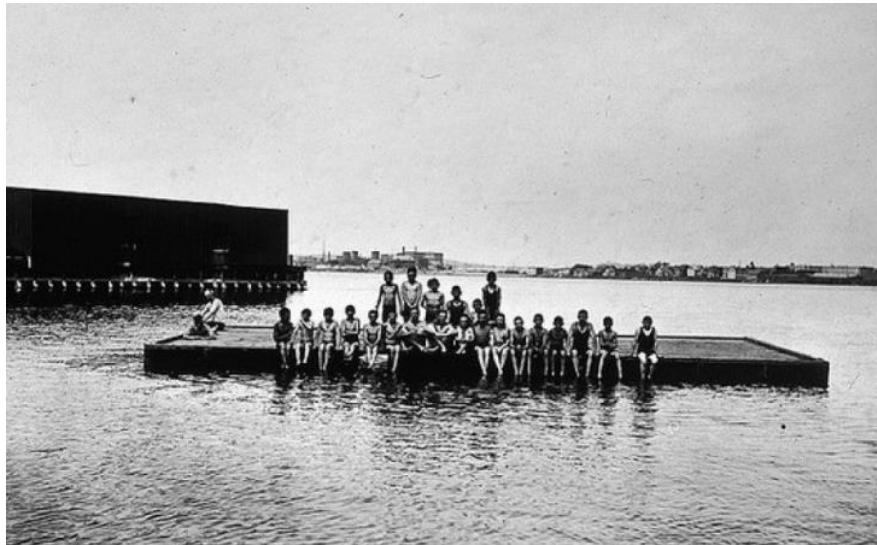


SPAULDING REHABILITATION HOSPITAL: LEADERS IN RESILIENT BUILDING DESIGN



BOSTON ROPEWALK: 1837-1971
27 MILLION FEET OF ROPE A YEAR DURING WWII

HOW CAN WE ALSO CONNECT PEOPLE TO CHARLESTOWN'S HISTORICAL ASSETS?



Dewey Beach was a popular swimming spot from 1898-1957



The Autoport services 64,000 cars / year



Tobin Bridge is the largest bridge in New England



Spaulding Rehabilitation Hospital: Leaders in Resilient Building Design

HOW CAN WE CONNECT PEOPLE TO EXISTING COMMUNITY ASSETS?

- COMMUNITY ASSETS
- PARKS & RECREATION
- HISTORIC PLACES



ASSEMBLY SQUARE

RYAN PLAYGROUND

SULLIVAN SQUARE

GARDENS FOR CHARLESTOWN

CHARLESTOWN WORKING THEATER

DOHERTY PLAYGROUND

CHARLESTOWN COMMUNITY CENTER FIELDS

DOHERTY PLAYGROUND, 1895

TERMINAL STORAGE BUILDING, 1912

LITTLE MYSTIC BOAT ACCESS

FORTY FLIGHTS

CHARLESTOWN COMMUNITY CENTER

CHARLES NEWTOWN COOP

BARRY FIELD

THOMAS M. MENINO PARK

BUNKER HILL COMMUNITY COLLEGE

BUNKER HILL SHOPPING CENTER

PHIPPS STREET BURIAL GROUND, 1630

BUNKER HILL MONUMENT, 1825

BHA HOUSING

CHARLESTOWN NAVY YARD, ROPE WALK, 1837

CHARLESTOWN NAVAL SHIPYARD PARK



4

WHAT DO YOU THINK OF THIS SPACE?

Mystic River Watershed Association

STEP 1

Take a red and green sticker and a comment card

STEP 2

Place your stickers in an area you like and an area that could improve

STEP 3

Elaborate on your sticker placements on a comment card and place it in the jar



WE MET WITH THE COMMUNITY...



...WHO SHARED THOUGHTS AND IDEAS!

People enjoy the **Existing Harborwalk** and **Thomas Menino Park!**

They would love to see **walking and biking trails, and a living shoreline!**

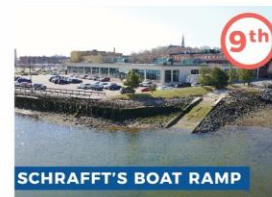
NEW SPACES

280
Mystic River
WATERSHED ASSOCIATION
RESPONSES



EXISTING FEATURES

280
Mystic River
WATERSHED ASSOCIATION
RESPONSES

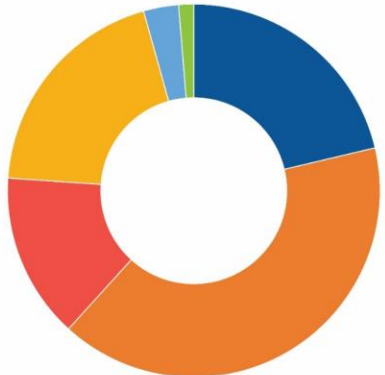


HERE'S HOW THE COMMUNITY WOULD USE A TRAIL!

 **TRAIL CONNECTOR?** (ONLINE SURVEY ONLY) 230 **RESPONSES** 

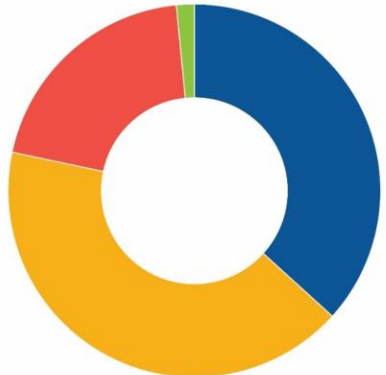
IF A TRAIL EXISTED CONNECTING SCHRAFFT'S TO SPAULDING...

HOW OFTEN WOULD YOU USE IT?



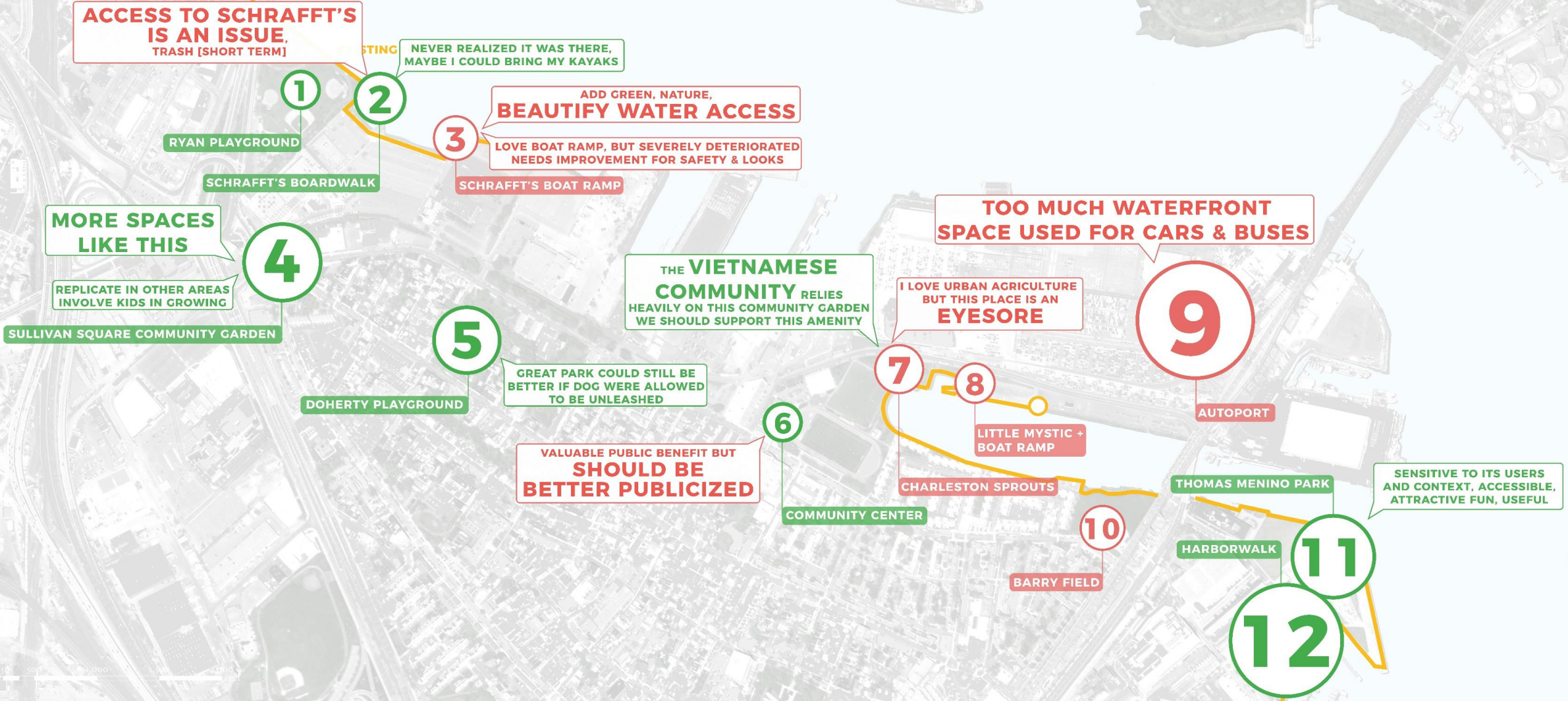
- DAILY
- WEEKLY
- MONTHLY
- A FEW TIMES A YEAR
- I WOULD NOT USE IT
- OTHER

HOW WOULD YOU USE IT?

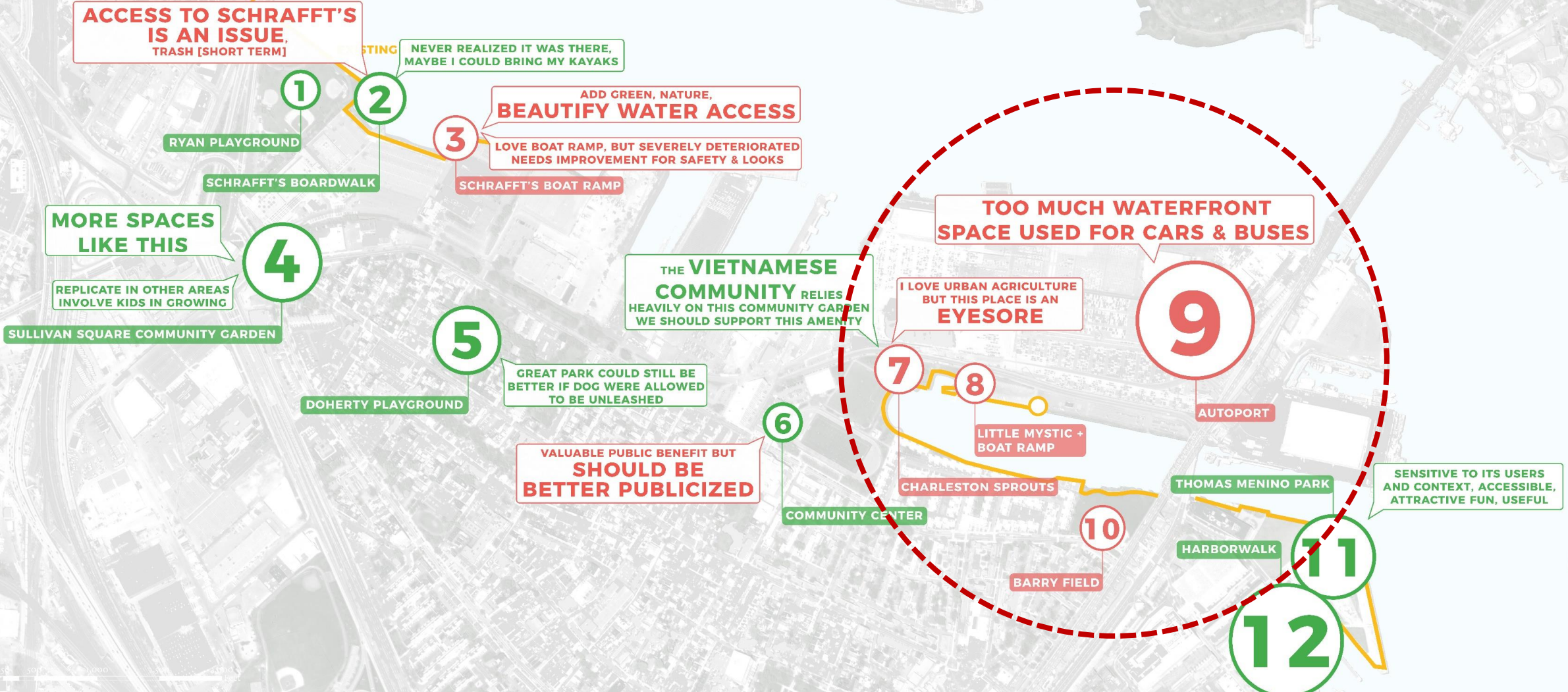


- WALK
- BIKE
- RUN
- OTHER

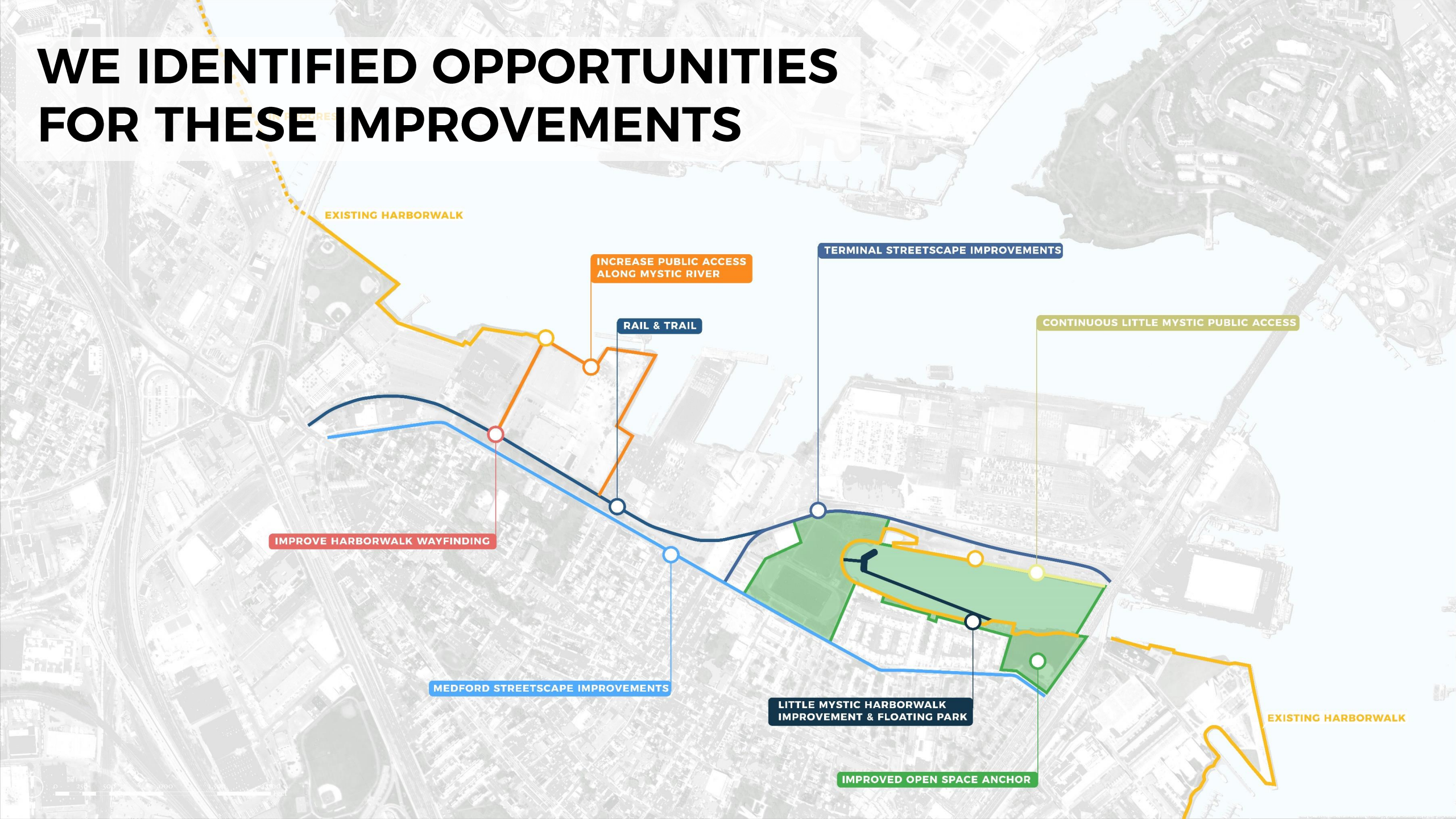
HERE'S WHAT WE HEARD ABOUT EXISTING OPEN SPACE AND ACCESS!



MANY PEOPLE RECOMMEND IMPROVEMENTS AROUND THE LITTLE MYSTIC CHANNEL



WE IDENTIFIED OPPORTUNITIES FOR THESE IMPROVEMENTS



EXISTING HARBORWALK

INCREASE PUBLIC ACCESS
ALONG MYSTIC RIVER

RAIL & TRAIL

TERMINAL STREETScape IMPROVEMENTS

CONTINUOUS LITTLE MYSTIC PUBLIC ACCESS

IMPROVE HARBORWALK WAYFINDING

MEDFORD STREETScape IMPROVEMENTS

LITTLE MYSTIC HARBORWALK
IMPROVEMENT & FLOATING PARK

IMPROVED OPEN SPACE ANCHOR

EXISTING HARBORWALK

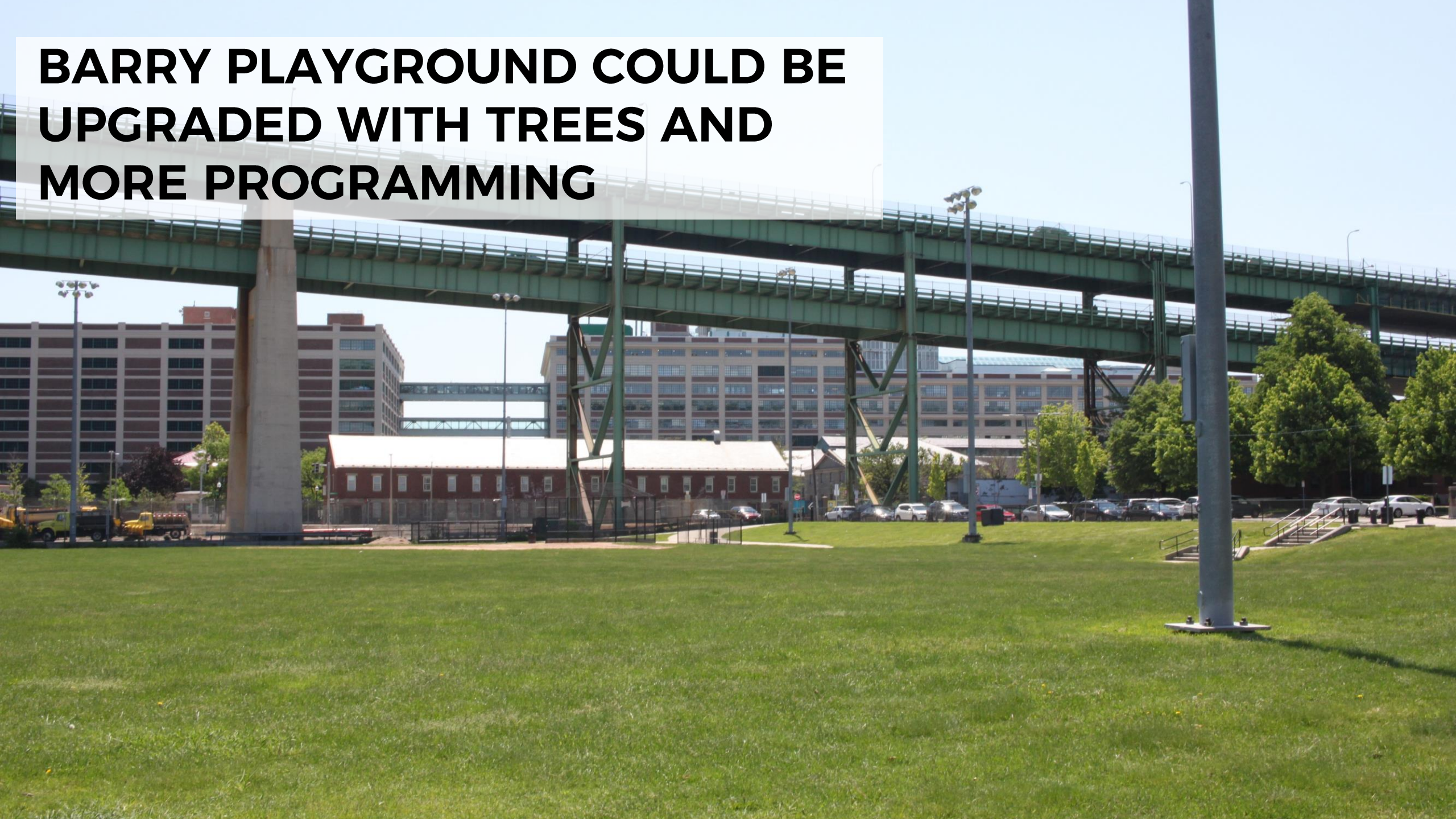


THE EXISTING RAIL OFFERS OPPORTUNITY FOR A TRAIL!

THE AREA UNDER THE TOBIN BRIDGE COULD BE TRANSFORMED INTO AN OPEN SPACE AMENITY



BARRY PLAYGROUND COULD BE UPGRADED WITH TREES AND MORE PROGRAMMING



PLAZA SPACE ALONG THE CHANNEL COULD ALSO BE RENOVATED FOR THE COMMUNITY



**WE COULD INCREASE ACCESS
TO THE LITTLE MYSTIC CHANNEL**



THE AREA AROUND THE BOAT RAMP COULD PROVIDE STORMWATER MITIGATION



THERE'S AN OPPORTUNITY TO MAKE TERMINAL STREET MORE WALKABLE



MEDFORD ST COULD BE SAFER FOR PEDESTRIANS AND BICYCLES





IMPROVED BOAT LAUNCH

FLOATING WETLAND

SPROUTS COMMUNITY GARDEN

LIVING SHORELINE

FLOATING POOL & PARK

STORMWATER GARDEN

RENOVATED PLAZA

ADDITIONAL FERRY STOP

TEMPORARY EVENT & INSTALLATION

RAIL & TRAIL

IMPROVED STREET

FERRY ROUTE

DOG PARK

**A VISION FOR
THE FUTURE
CHARLESTOWN
LOWER MYSTIC**