



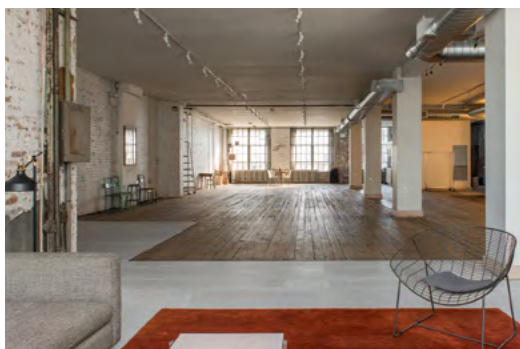
STUDIOS

We offer two studio environments that can be rented separately or combined to create one large interconnected space. We offer half and full-day rentals. Standard business hours are 7am to 10pm, but accommodations can be made for early or late arrivals/departures. Our elevator runs 24/7. All studio rentals include free coffee, water, wifi and other amenities. We also offer limited in-house EQ at affordable rates.

FOR MORE INFORMATION OR TO BOOK A STUDIO:

booking@warehousebrooklyn.com

STUDIO 1



Studio One is a raw, open 3200 sq/ft room. Environmental features include six large windows, rustic wood floors, brick walls and other industrial elements that hint back to the 1930s when the space was a coffee roasting company.

Designed to be the perfect lifestyle shooting space, the soft diffused daylight is great for portraiture. Additionally, our shoot kitchen — equipped with a electric range, stove and microwave — is perfect for food and healthy lifestyle photography.

Amenities

- Working shoot kitchen
- Two-seat hair/makeup station
- In-house sound system
- High-speed wireless Internet
- 6 x 20amp circuits (11 w/ distro box)
- Climate controlled
- Studio-run elevator directly to studio

Included

- 2 c-stands w/ sandbags
- 2 black/white v-flats
- 2 full apple boxes
- 2 garment racks
- 1 Jiffy steamer

STUDIO 2



Studio Two is 1300 sq/ft and is the perfect location for smaller productions where you're shooting portraits, model tests, look books or fashion catalog work. The space features 16' ceilings, original brick walls, hardwood floors, balcony lounge area.

Load your gear in using the elevator. Enjoy access to our communal pantry for coffee and refreshments.

Amenities

- Hair/makeup station
- In-house sound system
- High-speed wireless Internet
- 3 x 20amp circuits (8 w/ distro box)
- Climate controlled
- Studio-run elevator directly to studio

Included

- 2 c-stands w/ sandbags
- 2 black/white v-flats
- 2 full apple boxes
- 1 garment racks
- 1 Jiffy steamer



**FOR MORE INFORMATION
OR TO BOOK A STUDIO:**

booking@warehousebrooklyn.com

EQUIPMENT

Below are the items that we have in house. If you do not see what you need, please let us know and we will use our relationships with rental houses in the area to secure those items for your shoot. Please note: Any outside equipment orders must be sent in 24 hrs prior to your booking so that we can ensure we'll have it ready for you on set.

INCLUDED WITH RENTAL

- (2) C-Stands
- (2) Black/White V-Flats
- (2) Full Apple Boxes
- (2) 15 lb. Sandbags
- (2) Rolling Clothes Racks
- (1) 6' Folding Ladder

LIGHTING PACKAGES

Portrait Setup \$80.00

- (2) Profoto D1 Heads With Cable
- (1) Profoto Air Remote (Nikon or Canon)
- (2) 25' Heavy Duty Extension Cords

E-Commerce & Lookbook Setup \$120.00

- (4) Profoto D1 Heads With Cable
- (1) Profoto Air Remote (Nikon or Canon)
- (4) 25' Heavy Duty Extension Cords

#	DESCRIPTION	RATE
STROBES		
6	Profoto D1 Air 500w/s With Reflector & Cable	\$25.00
1	Profoto Air Controller (for Nikon or Canon)	\$20.00
CONTINUOUS		
1	Arri 1k Fresnel w/ Barn Doors & Grid	\$30.00
1	Mole-Richardson 1k Fresnel w/ Barn Doors & Grid	\$30.00
4	Mole-Richardson 250m Fresnel w/ Barn Doors & Grid	\$25.00
MODIFIERS		
3	Profoto 10° Honeycomb Grid for D1	\$10.00
3	Profoto 20° Honeycomb Grid for D1	\$10.00
6	Profoto (33") Small White Umbrella	\$5.00
4	Profoto (41") Medium White Umbrella	\$8.00
2	PhoteK Softlighter II (36") Small 7mm Shaft	\$10.00
3	PhoteK Softlighter II (46") Medium 7mm Shaft	\$15.00
2	Profoto 3' RFI Octa	\$15.00
1	Profoto Beauty Dish	\$25.00
1	Profoto 20° Honeycomb Grid for Beauty Dish	\$10.00



**FOR MORE INFORMATION
OR TO BOOK A STUDIO:**

booking@warehousebrooklyn.com

#	DESCRIPTION	RATE
2	Profoto (1x1.3') Small Softbox	\$10.00
2	Profoto (1x1.3') 50° Softgrid	\$5.00
2	Profoto (2x3') Medium Softbox	\$15.00
2	Profoto (2x3') 50° Softgrid	\$5.00
2	Profoto (4x6') Large Softbox	\$20.00
2	Profoto (4x6') 50° Softgrid	\$5.00
2	Profoto (1x4') Medium RFI Stripbox	\$15.00
2	Profoto (1x4') 50° Softgrid	\$5.00
2	Profoto (1x6') Large RFI Stripbox	\$30.00
2	Profoto (1x6') 50° Softgrid	\$10.00
GRIP		
1	Reel EFX Fan 2 Turbo Wind Machine	\$25.00
4	Matthews 18x24" Black Flag	\$5.00
12	Matthews 40" C Stands	\$5.00
2	Matthews Medium Roller	\$10.00
1	Bogen Superboom w/ Stand	\$15.00
6	Matthews Cordura 15lb Sand Bags	\$3.00
10	Full Apples	\$5.00
15	Medium Pony Clamps	\$2.00
6	Small Pony Clamps	\$2.00
6	C Clamps	\$2.00
2	Matthews Big Ben Clamp	\$5.00
2	Matthews Matthellini Clamp with 6" End Jaw	\$5.00
1	iOptron SkyTracker Ball Head v2	\$10.00
1	Manfrotto 013 Double-ended Spigot	\$2.00
1	6x6 Scrim Jim & Frame w/ 3/4 Stop White Diffusion	\$25.00
1	8x8 Scrim w/ 2 stop white, black or green screen (no frame)	\$40.00
1	8x8 Westcott Scrim Jim Cine 1/2-Stop Grid Cloth Diffuser Fabric (no frame)	
DIGITAL CAPTURE		
1	27" EIZO CX271 Monitor	\$75.00
1	MacBook Pro w/ Capture 1 & Lightroom	\$50.00
1	15' USB 3 Tether cable	\$3.00
1	Cam Ranger Wireless Transfer	\$15.00
1	500GB Portable Hard Drive	\$5.00
1	Tether Tools Laptop Table	\$20.00

WAREHOUSE STUDIOS LLC // WAREHOUSEBROOKLYN.COM

3905 2nd Avenue, 2nd Floor, Brooklyn, NY 11232 • 347.689.4896 • booking@warehousebrooklyn.com



**FOR MORE INFORMATION
OR TO BOOK A STUDIO:**

booking@warehousebrooklyn.com

#	DESCRIPTION	RATE
EXPENDABLES & MISC		
	Savage 9' Seamless Super White (per pull)	\$20.00
	Savage 9' Seamless Super Black (per pull)	\$20.00
	Savage 9' Seamless Thunder Gray (per pull)	\$20.00
	Special Order 9' Seamless (call for details)	\$80.00
	2" x 12 yd Black Gaffer's Tape	\$8.00
1	Savage 10x24' Solid Black Muslin Background	\$25.00
6	Black/White V-Flats	\$10.00
1	On Location Changing Tent	\$20.00
PRODUCTION		
4	25' Heavy Duty Extension Cord	\$5.00
4	50' Heavy Duty Extension Cord	\$5.00
2	Folding Tables	\$10.00
6	Folding Chairs	\$5.00



3905 2nd Avenue
2nd Floor
Brooklyn, NY 11232

347.689.4896
booking@warehousebrooklyn.com
warehousebrooklyn.com

