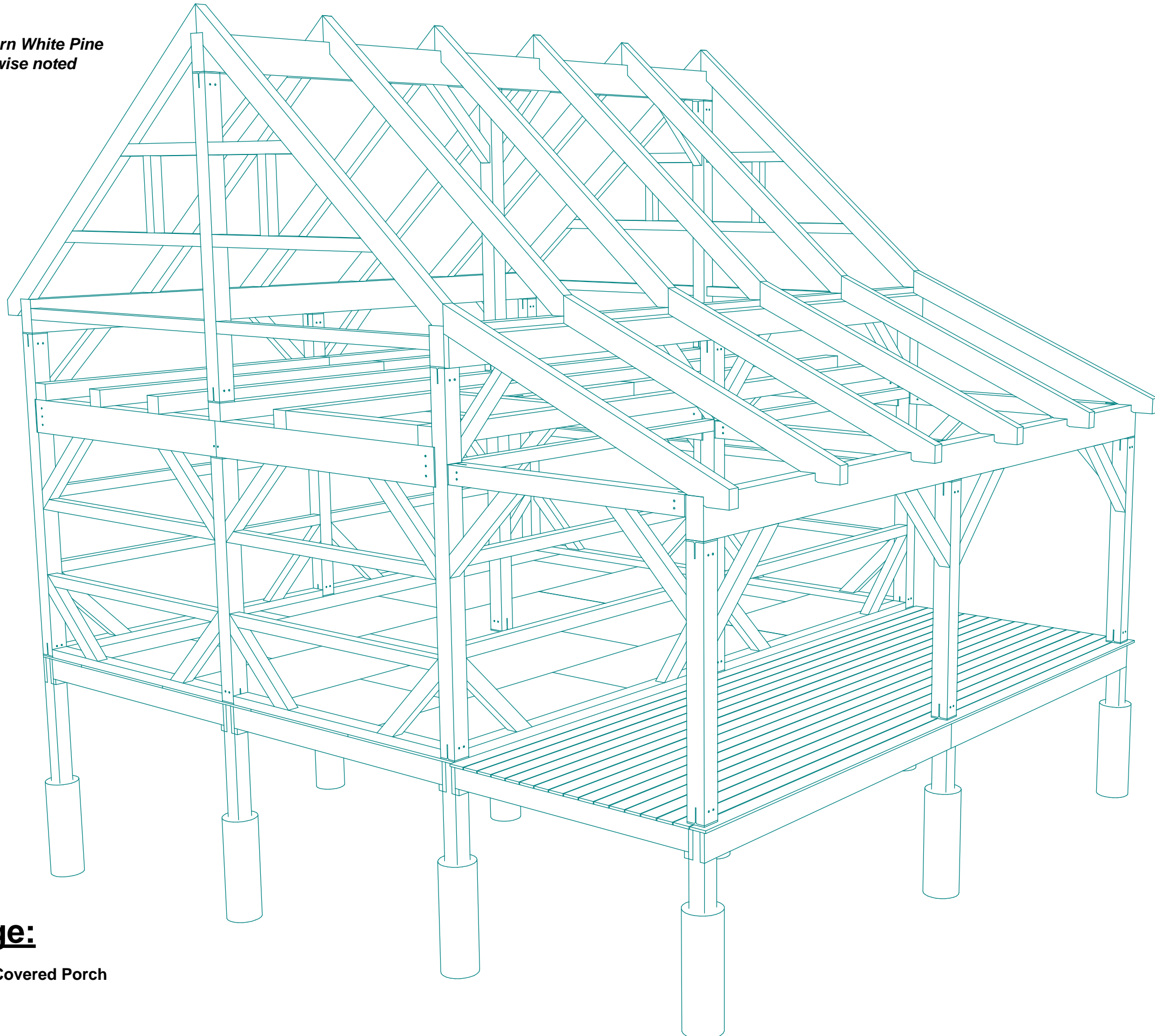


- All timbers will be Eastern White Pine  
#2 or better unless otherwise noted



## Deer Lodge:

18' x 22' w/ 8' x 22' Covered Porch



COPYRIGHT LAWS PROHIBIT REPRODUCTION OR USE OF THIS DRAWING, IN WHOLE OR IN PART, WITHOUT THE EXPRESSED WRITTEN PERMISSION OF CONNECTICUT POST AND BEAM, LLC.

DO NOT SCALE DIMENSIONS ON THESE DRAWINGS. THESE IMAGES ARE MACHINE REPRODUCTIONS AND MAY CONTAIN A MARGIN OF ERROR.

CONNECTICUT  
**POST & BEAM**

18' x 22' Cabin

Revisions:  
07-05-2014

DRAWING INFO:  
Rendering

DRAWING No. 101  
PRINTED: 12-05-2014



COPYRIGHT LAWS PROHIBIT REPRODUCTION OR USE OF THIS DRAWING, IN WHOLE OR IN PART, WITHOUT THE EXPRESSED WRITTEN PERMISSION OF CONNECTICUT POST AND BEAM, LLC.

DO NOT SCALE DIMENSIONS ON THESE DRAWINGS. THESE IMAGES ARE MACHINE REPRODUCTIONS AND MAY CONTAIN A MARGIN OF ERROR.

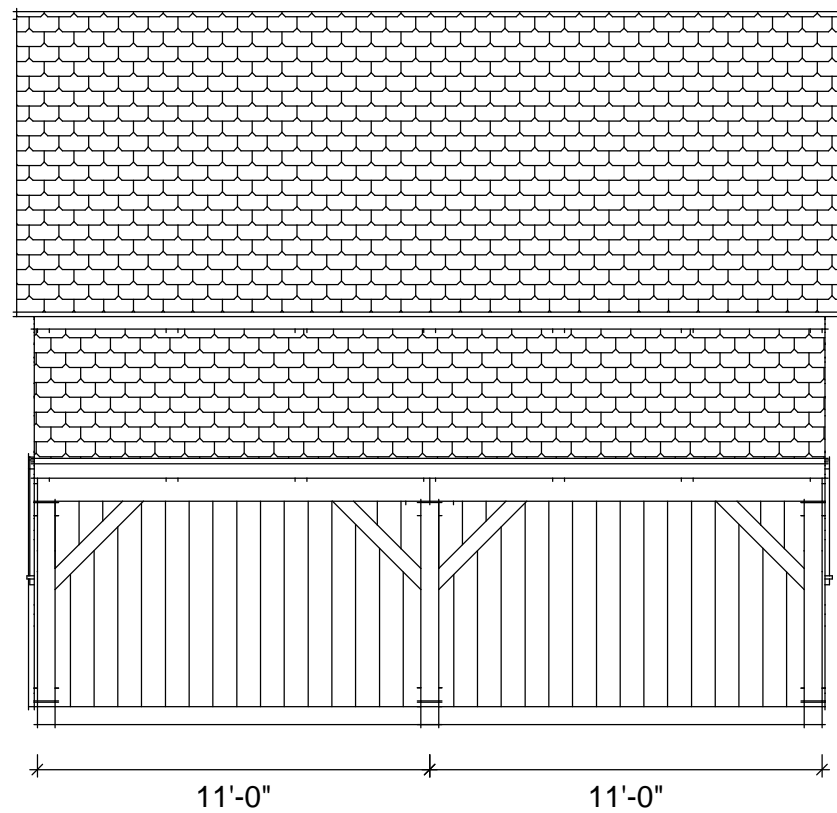
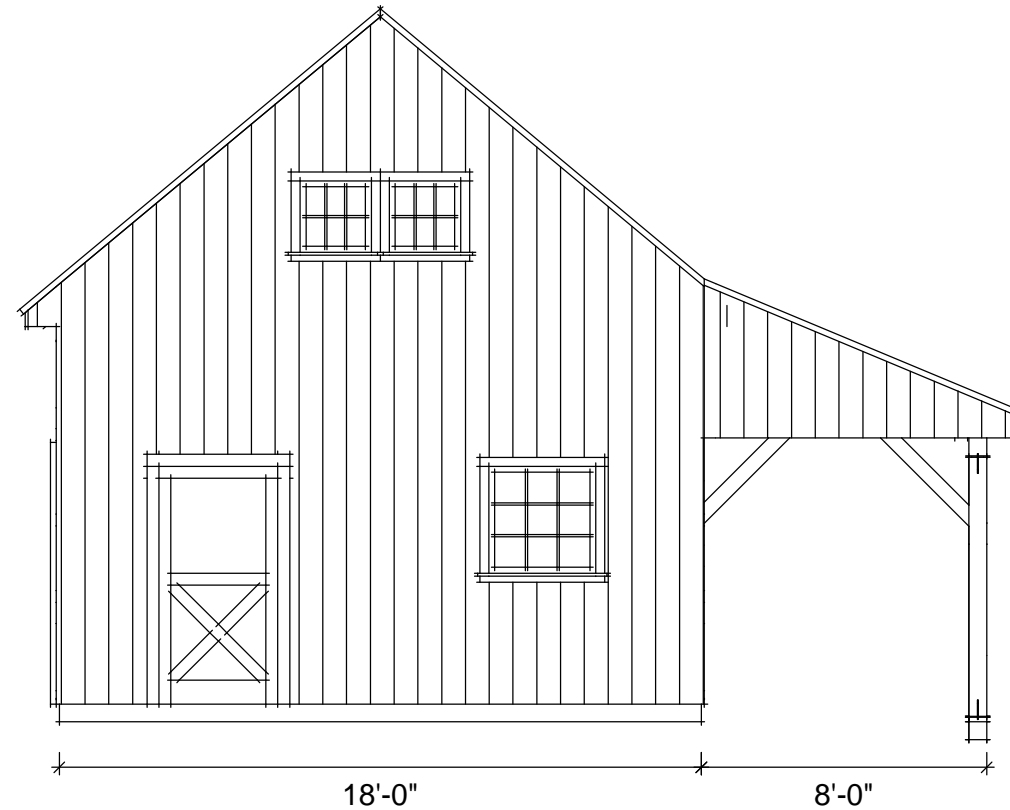
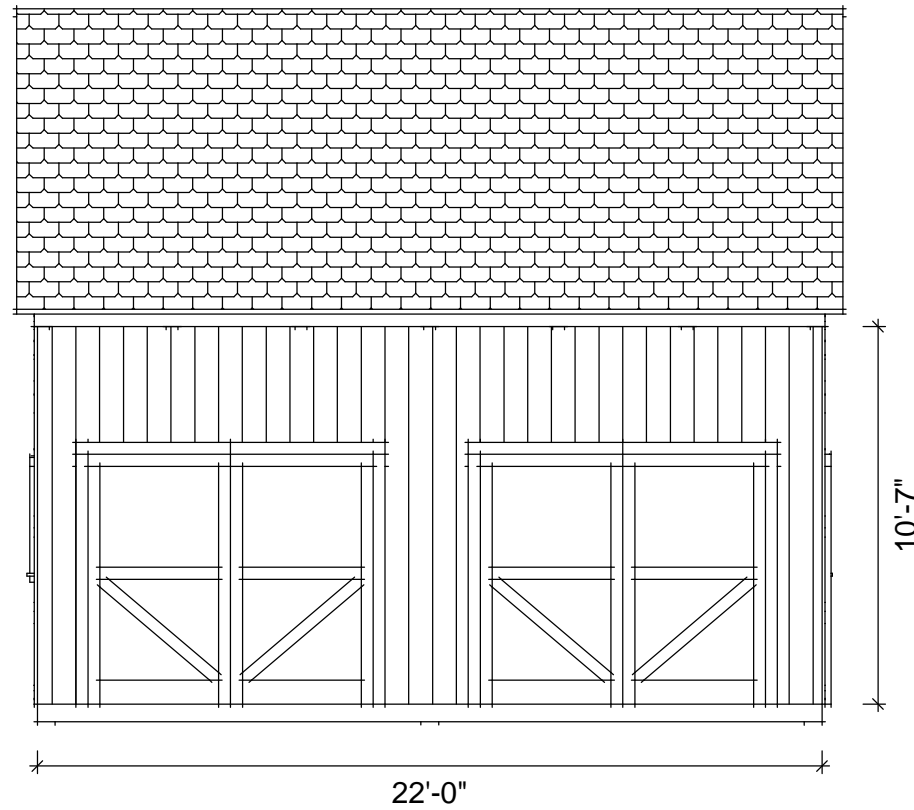


18' x 22' Cabin

Revisions:  
18-04-2014

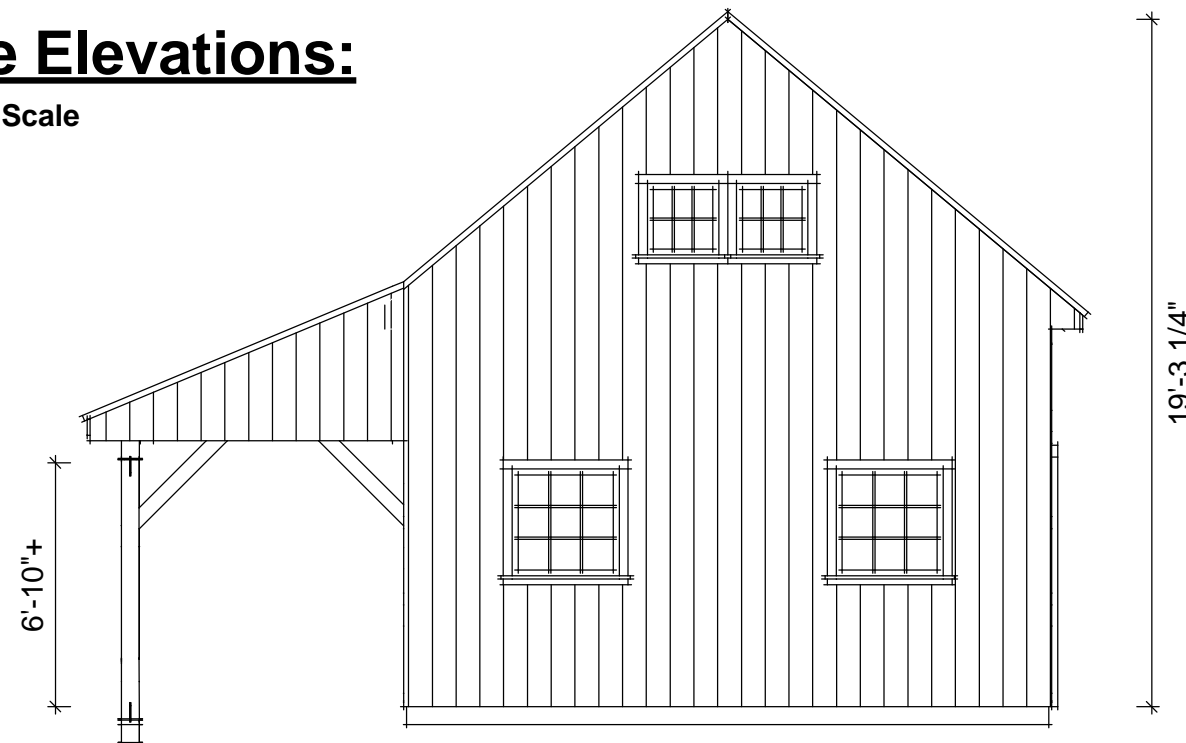
DRAWING INFO:  
Elevations

DRAWING No. 102  
PRINTED: 12-05-2014



### Sample Elevations:

Do Not Scale



## Timber List

Beam-Name	Item/Species	QTY	W"	H"	Length	Notes
DP1	Eastern White Pine	4	6	6	7'-10 1/2"	
DP2	Eastern White Pine	2	6	6	10'-3"	
G1	Eastern White Pine	6	6	12	8'-6 9/16"	
J1	Eastern White Pine	13	6	6	11'	
J2	Eastern White Pine	1	6	6	4'-11 9/16"	
J3	Eastern White Pine	1	6	6	4'-11 1/8"	
J4	Eastern White Pine	1	6	6	5'	
KB1	Eastern White Pine	8	4	5	3'-3 7/16"	
KB1	Eastern White Pine	35	4	5	3'-4"	
LB1	Eastern White Pine	1	2	10	22'	
P1	Eastern White Pine	6	6	6	9'-11 1/8"	
P2	Eastern White Pine	2	6	6	6'-11 1/8"	
P3	Eastern White Pine	1	6	6	9'-11 1/8"	
P4	Eastern White Pine	3	6	6	8'-9 1/4"	
P5	Eastern White Pine	3	6	6	6'-6 3/8"	
PB1	Eastern White Pine	3	6	12	22'	
PB2	Eastern White Pine	1	6	12	22'	
R1	Eastern White Pine	6	4	8	12'-1 1/8"	
R1	Eastern White Pine	6	4	8	12'-11 5/8"	
R2	Eastern White Pine	6	4	8	9'-7 11/16"	
SC1	Eastern White Pine	3	3	6	8'-3"	
SC2	Eastern White Pine	1	3	6	1'-6"	
SC3	Eastern White Pine	1	3	6	2'-9"	
SC4	Eastern White Pine	2	3	6	1'-6"	
SC5	Eastern White Pine	2	3	6	9"	
SC5	Eastern White Pine	2	3	6	10'-3"	
SN	Eastern White Pine	4	4	4	9"	
SN	Eastern White Pine	6	4	4	1'-6"	
SN	Eastern White Pine	4	4	4	2'-1 1/4"	
SN	Eastern White Pine	2	4	4	2'-9"	
SN	Eastern White Pine	6	4	4	3'-1 1/4"	
SN	Eastern White Pine	4	4	4	3'-4 11/16"	
SN	Eastern White Pine	1	4	4	5'-9 7/16"	
SN	Eastern White Pine	3	4	4	6'-1 3/8"	
SN	Eastern White Pine	4	4	4	6'-3 9/16"	
SN	Eastern White Pine	2	4	4	6'-6 1/2"	
SN	Eastern White Pine	7	4	4	8'-3"	
SN	Eastern White Pine	6	4	4	10'-3"	
TB1	Eastern White Pine	3	6	6	7'-5 1/8"	

## Timber Tally

Beam Size	PCS.	bd/ft	Weight
EWP	172	3154	12616
Total	172	3154	12616
EWP			
2X 10	1	37	148
3X 6	11	81	324
4X 4	49	320	1280
4X 5	43	238	952
4X 8	18	555	2220
6X 6	40	1087	4348
6X 12	10	836	3344

## T-REX Count

Part	QTY
1/2 Aluminum Pins	120
5-1/8 GRK RSS Screw	270
3-1/2 GRK Calibum Screw	72
CR5050	12
CR6012	6
CR6060	39
Total	519

## Timber Definitions:

Abbrv.	Name
DP	Door Post
G	Girder
J	Joist
KB	Knee Brace
P	Post
PB	Plate Beam
PTS	Pressure Treated Sill
R	Rafter
SC	Sill Cover
SN	Siding Nail
TB	Tie Beam



18' x 22' Cabin

Revisions:  
12-05-2014

DRAWING INFO:  
Timber List

DRAWING No. 115  
PRINTED: 12-05-2014

COPYRIGHT LAWS PROHIBIT REPRODUCTION OR USE OF THIS DRAWING, IN WHOLE OR IN PART, WITHOUT THE EXPRESSED WRITTEN PERMISSION OF CONNECTICUT POST AND BEAM, LLC.

DO NOT SCALE DIMENSIONS ON THESE DRAWINGS. THESE IMAGES ARE MACHINE REPRODUCTIONS AND MAY CONTAIN A MARGIN OF ERROR.

