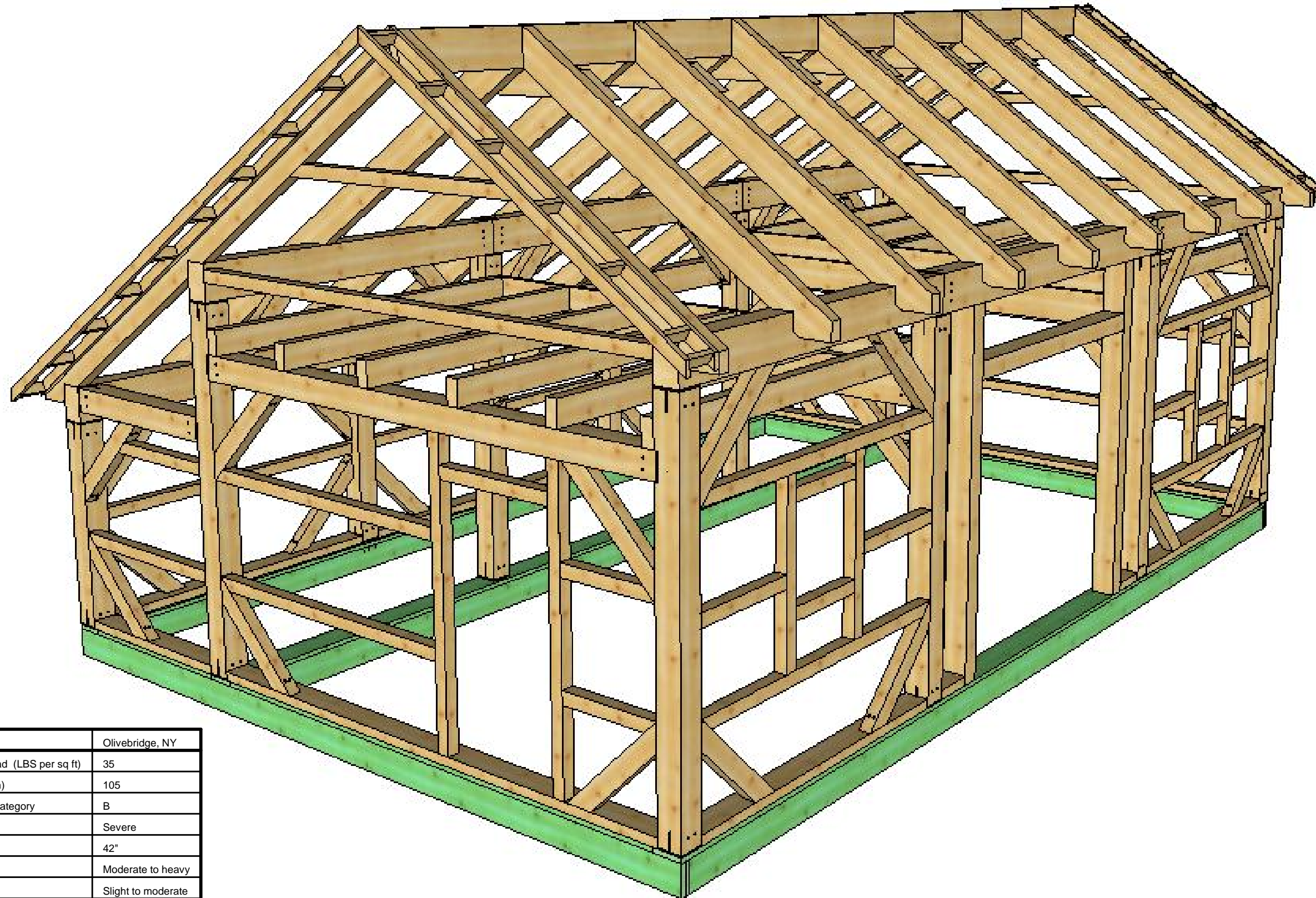


NOTE- All timbers shall be Hemlock #2 or better unless otherwise noted.

-Foundation Done By Others

Hebron

22' x 32'



COPYRIGHT LAWS PROHIBIT REPRODUCTION OR USE OF THIS DRAWING, IN WHOLE OR IN PART, WITHOUT THE EXPRESSED WRITTEN PERMISSION OF CONNECTICUT POST AND BEAM, LLC.

DO NOT SCALE DIMENSIONS ON THESE DRAWINGS. THESE IMAGES ARE MACHINE REPRODUCTIONS AND MAY CONTAIN A MARGIN OF ERROR.



22' x 32'

Criteria	Olivebridge, NY
Ground Snow Load (LBS per sq ft)	35
Wind Speed (mph)	105
Seismic Design Category	B
Weathering	Severe
Frost Line	42"
Termite	Moderate to heavy
Decay	Slight to moderate
Winter Design Temp (degrees F)	7

Revisions:
28-06-2015

DRAWING INFO:
Rendering

DRAWING No. 000
PRINTED: 04-07-2015



COPYRIGHT LAWS PROHIBIT REPRODUCTION OR USE OF THIS DRAWING, IN WHOLE OR IN PART, WITHOUT THE EXPRESSED WRITTEN PERMISSION OF CONNECTICUT POST AND BEAM, LLC.

DO NOT SCALE DIMENSIONS ON THESE DRAWINGS. THESE IMAGES ARE MACHINE REPRODUCTIONS AND MAY CONTAIN A MARGIN OF ERROR.

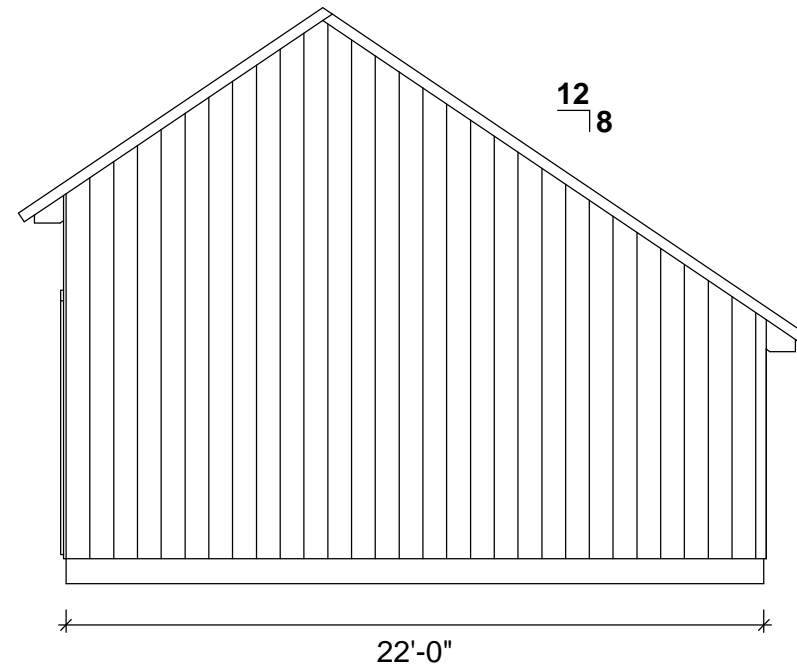
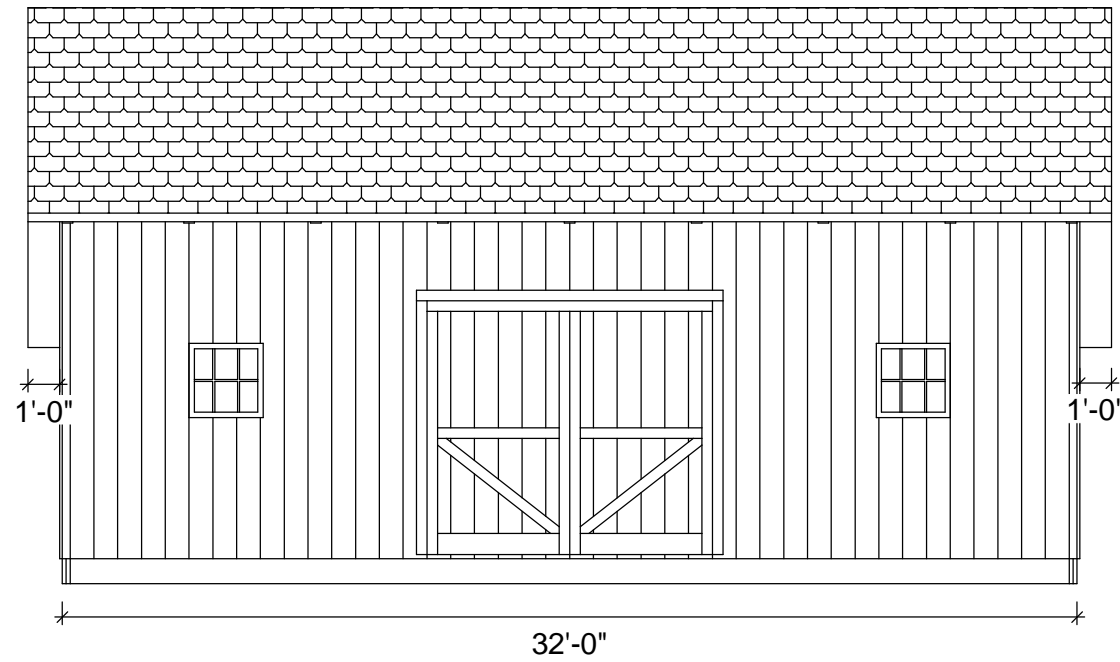


22' x 32'

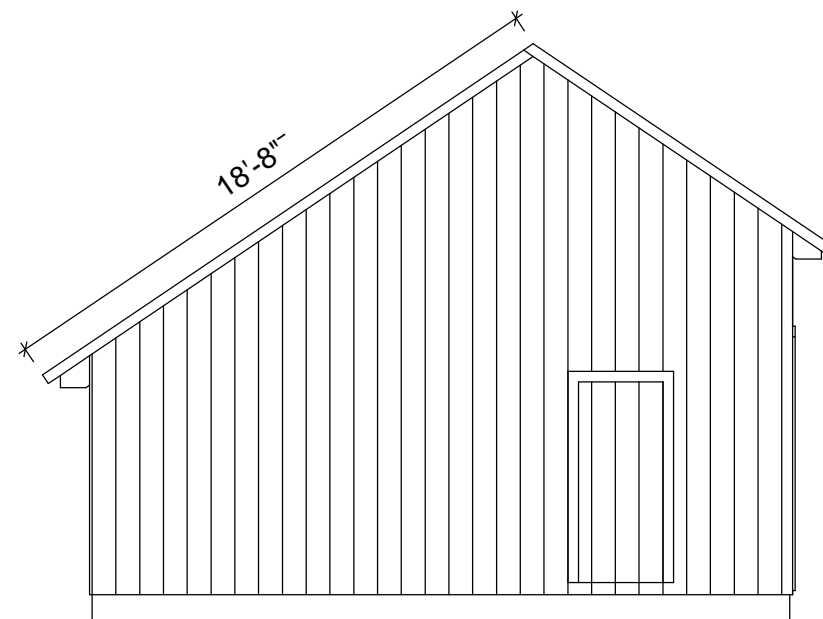
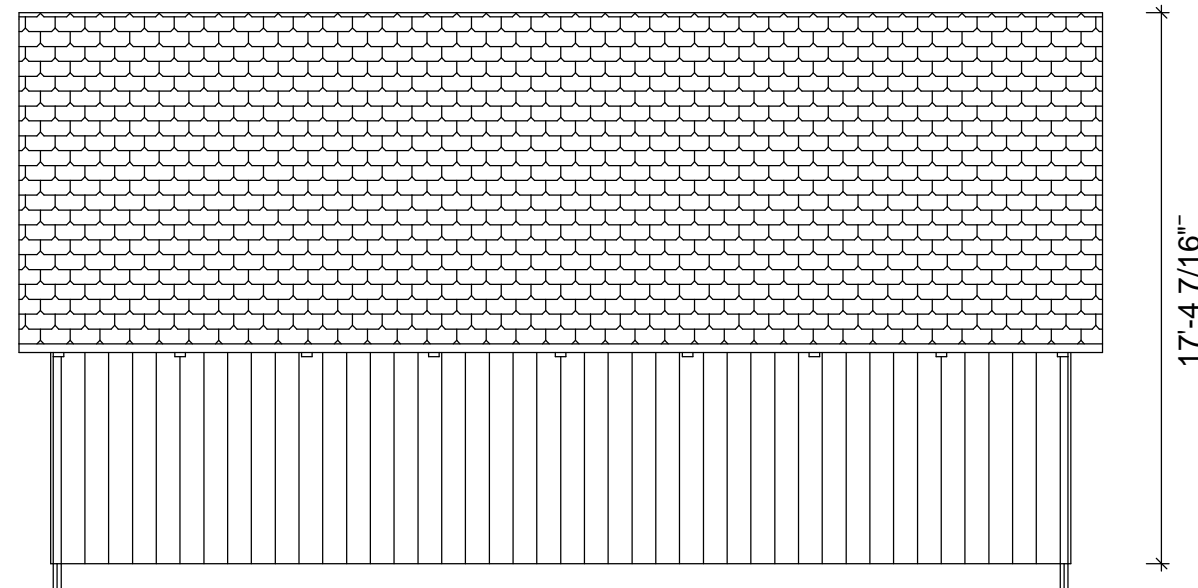
Revisions:
28-06-2015

DRAWING INFO:
Elevations

DRAWING No. 001
PRINTED: 04-07-2015



Sample Elevations:
Do Not Scale



Timber List:

Wood Type	Part	QTY	W(in.)	H(in.)	Length	BF
HF	KB1	42	4	6	3'-8"	308
TSW	PTS1	3	2	10	32'	160
TSW	PTS1	2	2	10	14'-5"	48
TSW	PTS1	2	2	10	5'-2 1/2"	17
TSW	PTS1	4	2	10	22'	147
TSW	PTS1	15	2	10	31'-6"	788
TSW	PTS1	6	2	10	14'-7"	146
TSW	PTS1	6	2	10	5'-6 1/2"	55
HF	PB1	6	8	12	10'	480
HF	PB2	3	8	12	12'	288
HF	SC3	2	3	8	14'-8"	58
HF	SC1	4	3	8	9'	72
HF	SC5	2	3	8	1'-2"	5
HF	SC4	2	3	8	5'-4"	21
HF	SC2	1	3	8	11'-4"	23
HF	RB1	4	3	12	8'	96
HF	R1	9	4	10	10'-11 1/2"	329
HF	J1	12	4	8	10'	320
HF	G1	2	8	12	14'-8 15/16"	236
HF	CT1	7	4	8	5'-2 1/2"	97
HF	JT1	2	2	8	15'	40
HF	SN	2	4	4	2'-8"	8
HF	SN	4	4	4	14'-8"	79
HF	SN	2	4	4	7'-9"	21
HF	SN	1	4	4	3'-4"	4
HF	SN	2	4	4	7'-7 5/16"	20
HF	SN	2	4	4	8'	22
HF	SN	2	4	4	5'-4"	14
HF	SN	2	4	4	3'-7 7/16"	10
HF	P1	4	8	8	9'-10 15/16"	212
HF	SN	4	4	4	9'	48
HF	SN	4	4	4	3'	16
HF	TB1	2	8	8	14'-8 15/16"	158
HF	TB2	2	8	8	5'-2 15/16"	56
HF	P3	2	8	8	5'-10 3/8"	62
HF	SN	2	4	4	9'	24
HF	SN	4	4	4	4'-6 3/4"	24
HF	SN	4	4	4	2'-4"	12
HF	P2	4	8	8	9'-10 15/16"	212
HF	P4	2	8	8	5'-10 3/8"	62
HF	SN	1	4	4	11'-4"	15
HF	DB1	2	6	8	10'	80
HF	DB2	1	6	8	8'	32
HF	FR2	4	2	4	18'-3 1/2"	49
HF	FR1	4	2	4	11'-5/8"	29
HF	FRB1	34	2	4	9"	17
HF	R2	9	4	10	18'-2 3/8"	546

Connector List:

T-Rex Connectors	QTY
CR8080	26
CR8012	4
CR3W	6

Order List:

Wood Type	W(in.)	H(in.)	Length(ft.)	QTY
HF	2	4	8'	3
HF	2	4	12'	4
HF	2	4	20'	4
HF	2	8	16'	2
HF	3	8	16'	7
HF	3	12	8'	4
HF	4	4	8'	4
HF	4	4	10'	1
HF	4	4	12'	4
HF	4	4	14'	3
HF	4	4	16'	7
HF	4	6	8'	21
HF	4	8	10'	19
HF	4	10	20'	18
HF	6	8	18'	2
HF	8	8	12'	2
HF	8	8	16'	8
HF	8	12	16'	5
HF	8	12	20'	3
HF	Sum		1450'	121

**** Note- Pressure treated lumber is not included on the order list, only rough sawn timbers****



COPYRIGHT LAWS PROHIBIT REPRODUCTION OR USE OF THIS DRAWING, IN WHOLE OR IN PART, WITHOUT THE EXPRESSED WRITTEN PERMISSION OF CONNECTICUT POST AND BEAM, LLC.

DO NOT SCALE DIMENSIONS ON THESE DRAWINGS. THESE IMAGES ARE MACHINE REPRODUCTIONS AND MAY CONTAIN A MARGIN OF ERROR.



22' x 32'

Revisions:
04-07-2015

DRAWING INFO:
Material List

DRAWING No. 013
PRINTED: 04-07-2015