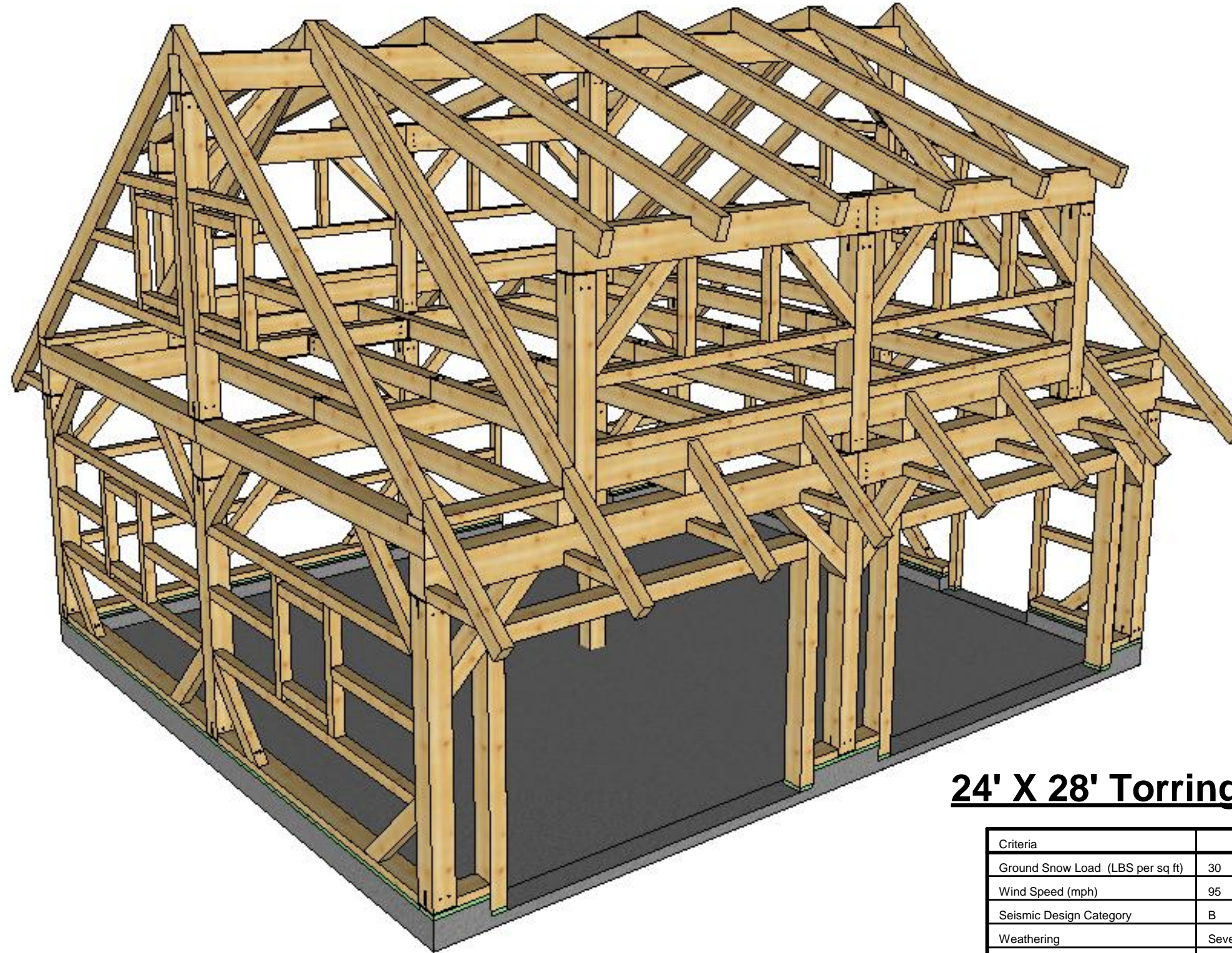


All timbers shall be Eastern White Pine #2 or better unless otherwise noted.

Window and door locations can't be modified unless all post and knee braces stay in place.



24' X 28' Torrington Barn

Criteria		
Ground Snow Load (LBS per sq ft)	30	
Wind Speed (mph)	95	
Seismic Design Category	B	
Weathering	Severe	
Frost Line	42"	
Termite	Moderate to heavy	
Decay	Slight to moderate	
Winter Design Temp (degrees F)	7	



COPYRIGHT LAWS PROHIBIT REPRODUCTION OR USE OF THIS DRAWING, IN WHOLE OR IN PART, WITHOUT THE EXPRESSED WRITTEN PERMISSION OF CONNECTICUT POST AND BEAM, LLC.

DO NOT SCALE DIMENSIONS ON THESE DRAWINGS. THESE IMAGES ARE MACHINE REPRODUCTIONS AND MAY CONTAIN A MARGIN OF ERROR.



24' x 28'

Revisions:
13-12-2014

DRAWING INFO:
Rendering

DRAWING No. 000
PRINTED: 13-12-2014



COPYRIGHT LAWS PROHIBIT REPRODUCTION OR USE OF THIS DRAWING, IN WHOLE OR IN PART, WITHOUT THE EXPRESSED WRITTEN PERMISSION OF CONNECTICUT POST AND BEAM, LLC.

DO NOT SCALE DIMENSIONS ON THESE DRAWINGS. THESE IMAGES ARE MACHINE REPRODUCTIONS AND MAY CONTAIN A MARGIN OF ERROR.

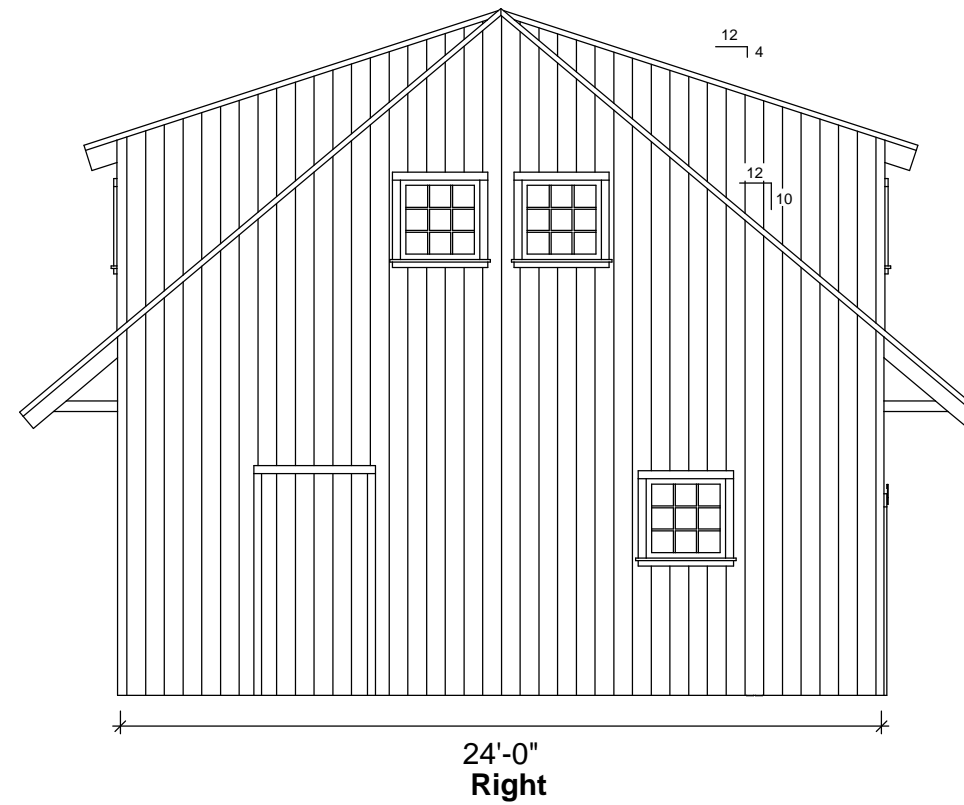
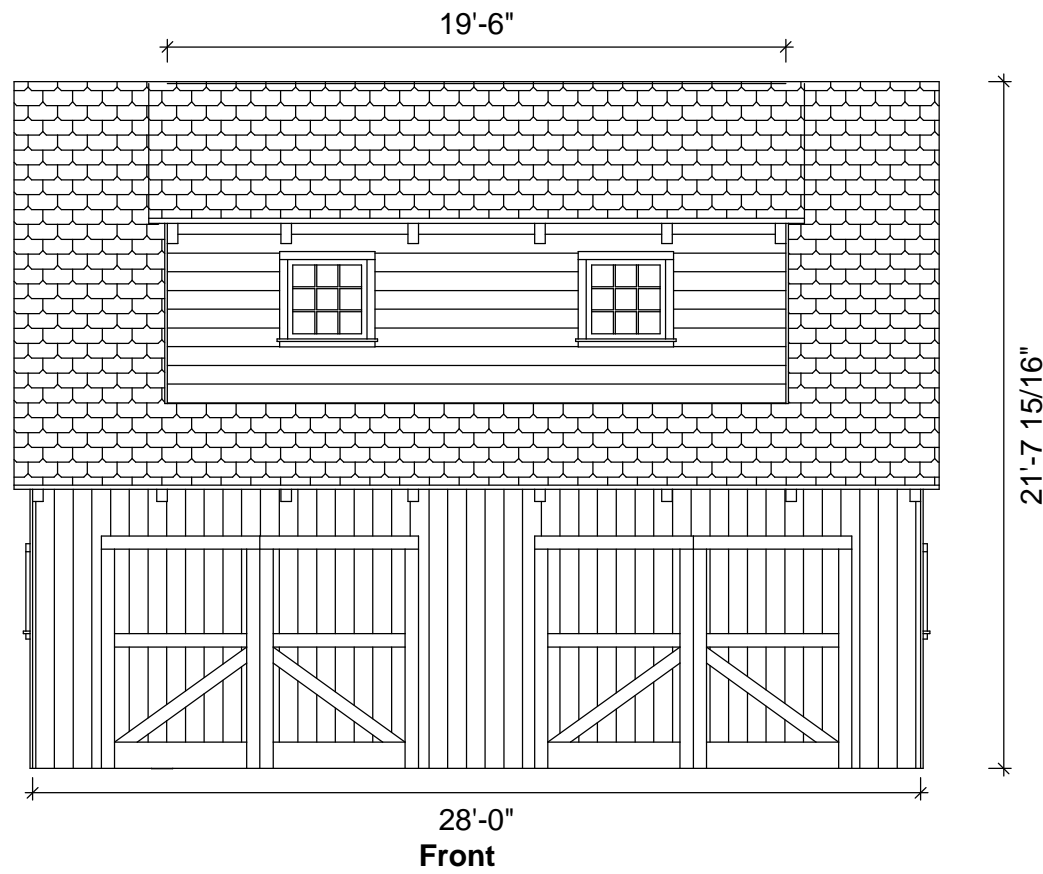


24' x 28'

Revisions:
09-12-2014

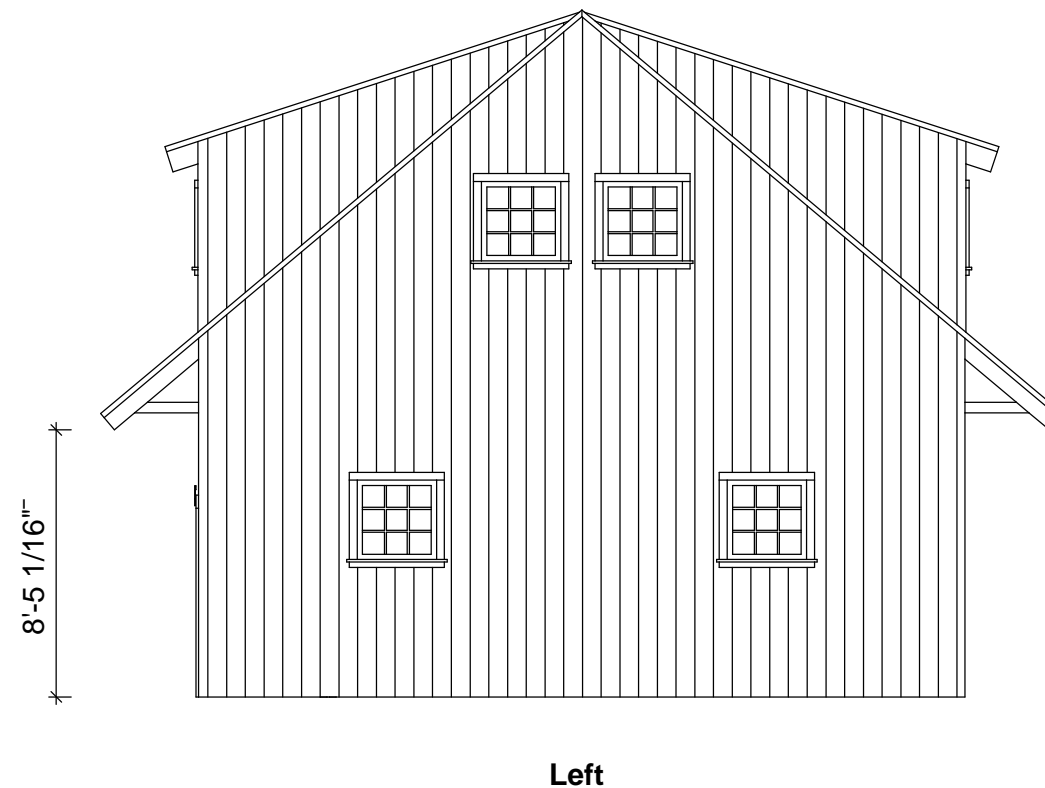
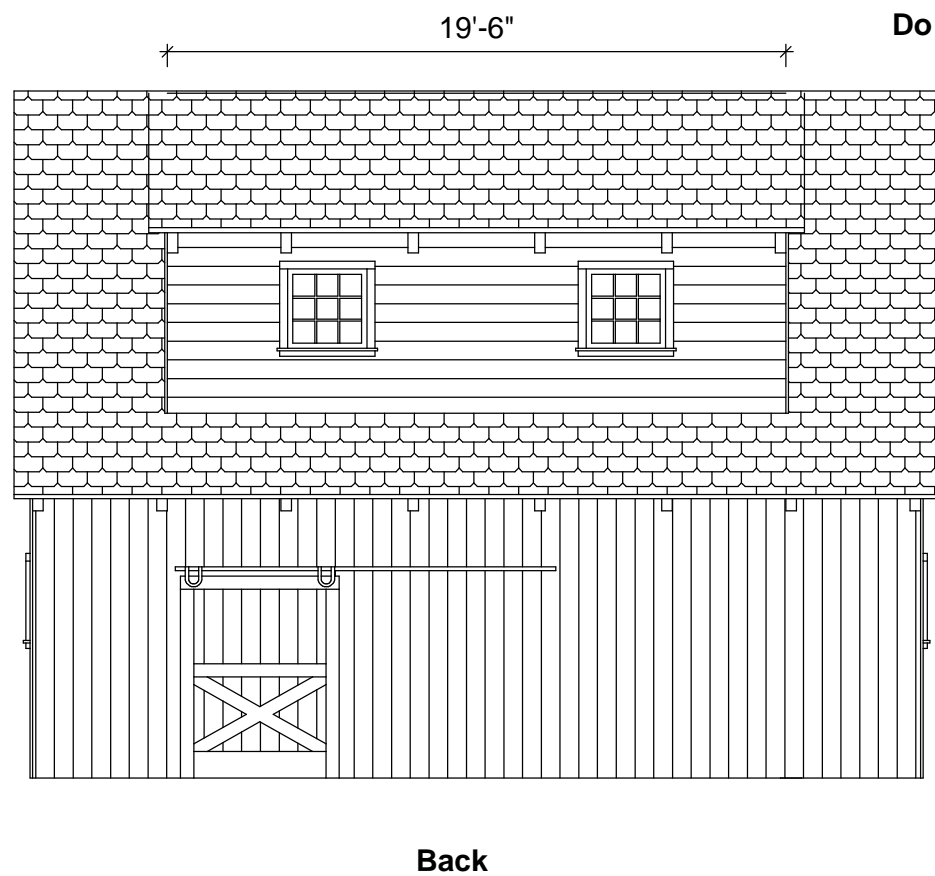
DRAWING INFO:
Sample Elevations

DRAWING No. 001
PRINTED: 13-12-2014



Sample Elevations:

Do Not Scale



Timber List

Wood Type	Part Number	QTY	W [in]	H [in]	L [ft]	VOL [BF]
EWP	G1	6	8	12	14'	672
EWP	SRB1	2	8	12	14'	224
EWP	PB1	4	8	12	9'-9"	312
EWP	BJ2	4	8	8	12'	256
EWP	P3	1	8	8	9'-10 15/16"	53
EWP	P7	1	8	8	9'-7 7/16"	51
EWP	P6	2	8	8	8'-11 7/16"	96
EWP	P1	6	8	8	7'-10 15/16"	254
EWP	P2	2	8	8	7'-10 15/16"	84
EWP	WB2	1	8	8	6'-10"	36
EWP	P5	6	8	8	6'	192
EWP	WB1	1	8	8	3'-7"	19
EWP	J1	10	6	8	12'	480
EWP	P4	1	6	8	9'-11 1/8"	40
EWP	DB2	2	6	8	9'	72
EWP	J3	1	6	8	7'-11 9/16"	32
EWP	DB1	4	6	8	7'-10 7/8"	126
EWP	J2	2	6	8	7'-8 9/16"	62
EWP	DF1	4	4	10	8'-9"	117
EWP	R1	8	4	8	15'-11 13/16"	341
EWP	DN1	4	4	8	14'-4 3/8"	153
EWP	R2	12	4	8	13'-9 1/4"	441
EWP	KB1	40	4	6	3'-8"	118

Wood Type	Part Number	QTY	W [in]	H [in]	L [ft]	VOL [BF]
EWP	RT1	16	4	6	4'	128
EWP	SN	3	4	4	13'-	52
EWP	SN	7	4	4	11'-	103
EWP	SN	4	4	4	8'-9 15/16"	47
EWP	SN	8	4	4	8'-9"	93
EWP	SN	2	4	4	6'-10 7/8"	18
EWP	SN	2	4	4	5'-10 7/8"	16
EWP	SN	4	4	4	4'-2 3/16"	22
EWP	SN	6	4	4	3'-11"	31
EWP	SN	2	4	4	3'-8"	10
EWP	SN	14	4	4	3'-6 3/4"	67
EWP	SN	2	4	4	3'-6 1/2"	10
EWP	SN	2	4	4	3'-5 1/2"	10
EWP	SN	4	4	4	3'-4 1/16"	18
EWP	SN	1	4	4	3'-4"	4
EWP	SN	22	4	4	2'-6"	74
EWP	RT2	16	4	4	2'-1 3/16"	45
EWP	SPC3	1	3	8	13'	26
EWP	SPC5	3	3	8	11'	66
EWP	SP1	4	3	8	4'-3"	34
EWP	SPC4	2	3	8	3'-8"	14
EWP	SPC6	1	3	8	3'-6"	7
EWP	SPC6	1	3	8	3'-5 1/2"	7
EWP	SPC1	2	3	8	1'-6"	6
EWP	SPC2	2	3	8	1'-6"	6

Wood Type	Part Number	QTY	W [in]	H [in]	L [ft]	VOL [BF]
EWP	KB2	4	6	8	3'-8"	59
TSW	PTS	4	2	8	6"	3
TSW	PTS4	1	2	8	22'-9"	30
TSW	PTS2	1	2	8	18'	24
TSW	PTS6	1	2	8	15'-2 1/2"	20
TSW	PTS3	1	2	8	4'-4"	6
TSW	PTS1	1	2	8	3'-8"	5
TSW	PTS5	1	2	8	3'-6"	5
TSW	PTS1	2	2	8	2'-2"	6
TSW	PTS	4	2	4	4"	1

Itemno.	VOL [BF]
EWP	5145
HF	235
TSW	100
Total	5480
EWP	
3X 8	166
4X 4	620
4X 6	246
4X 8	935
4X 10	117
6X 8	812
8X 8	1041
8X 12	1208
HF	
4X 6	176

Itemno.	VOL [BF]
6X 8	59
TSW	
2X 4	1
2X 8	99

EWP- EASTERN WHITE PINE

TSW- TREATED SOFT WOOD (pressure treated lumber)