

24' x 48' Custom Barn

Mike Rhodes



COPYRIGHT LAWS PROHIBIT REPRODUCTION OR USE OF THIS DRAWING, IN WHOLE OR IN PART, WITHOUT THE EXPRESSED WRITTEN PERMISSION OF CONNECTICUT POST AND BEAM, LLC.

DO NOT SCALE DIMENSIONS ON THESE DRAWINGS. THESE IMAGES ARE MACHINE REPRODUCTIONS AND MAY CONTAIN A MARGIN OF ERROR.

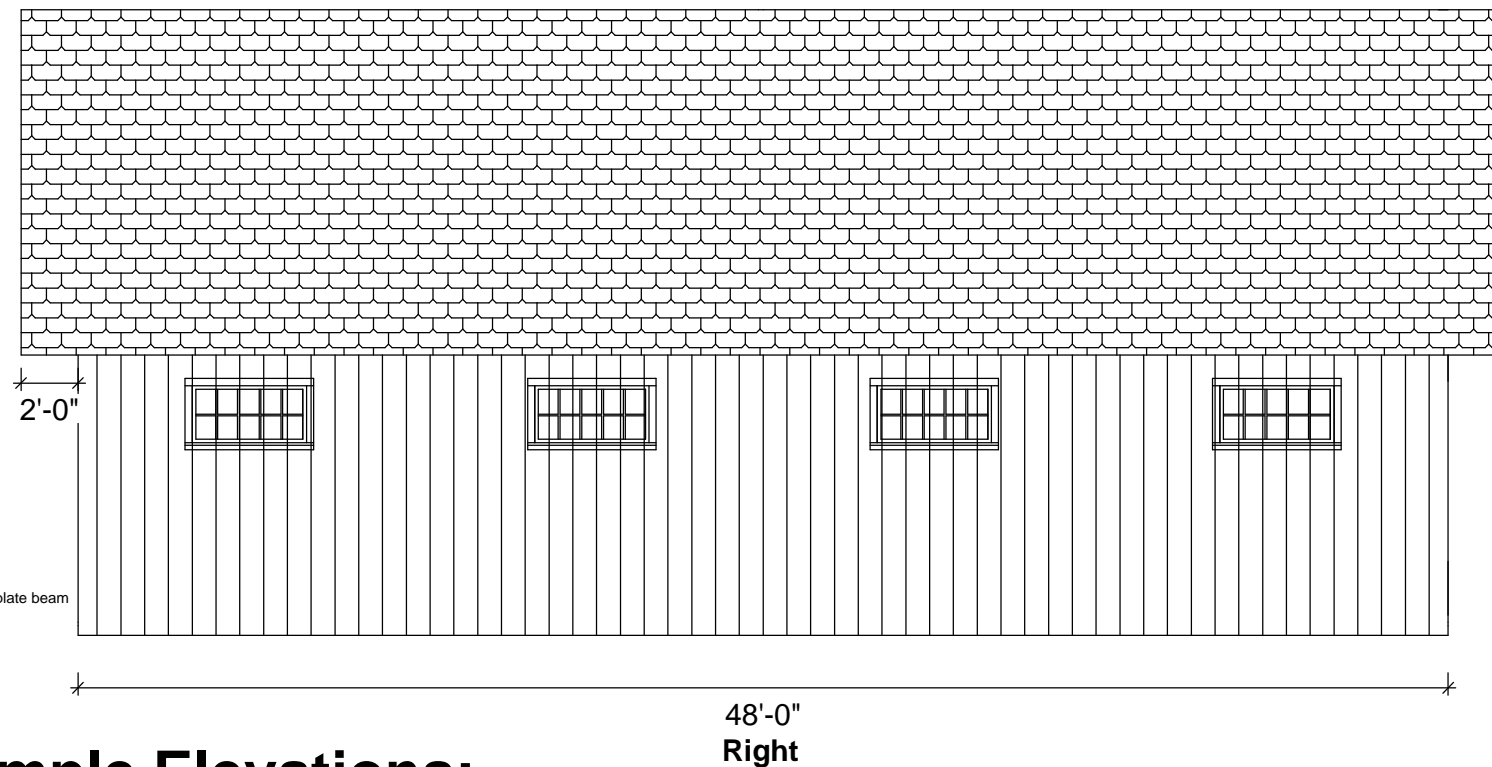
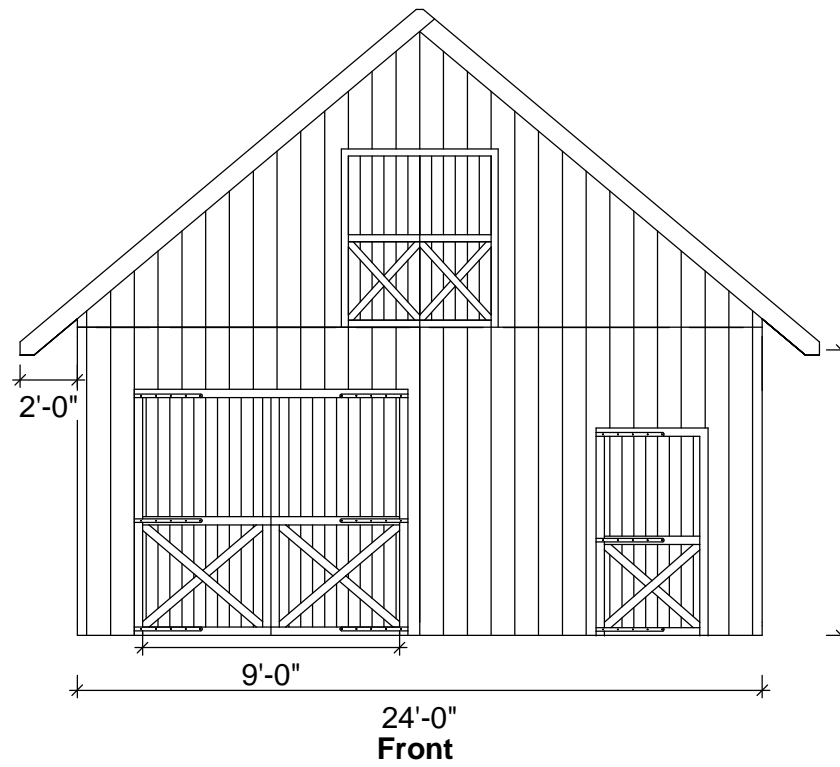
CONNECTICUT
POST & BEAM

24' x 48'

Revisions:
07-03-2016

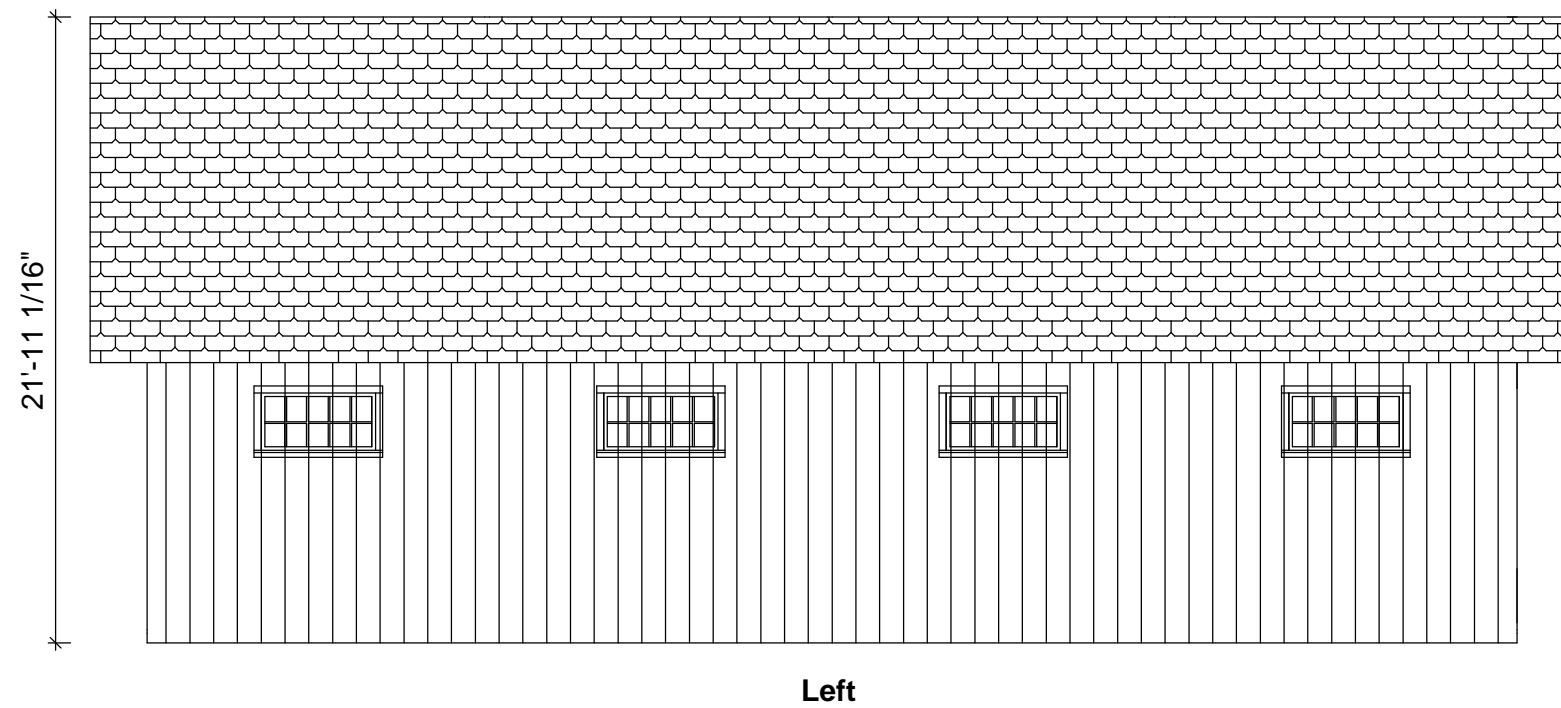
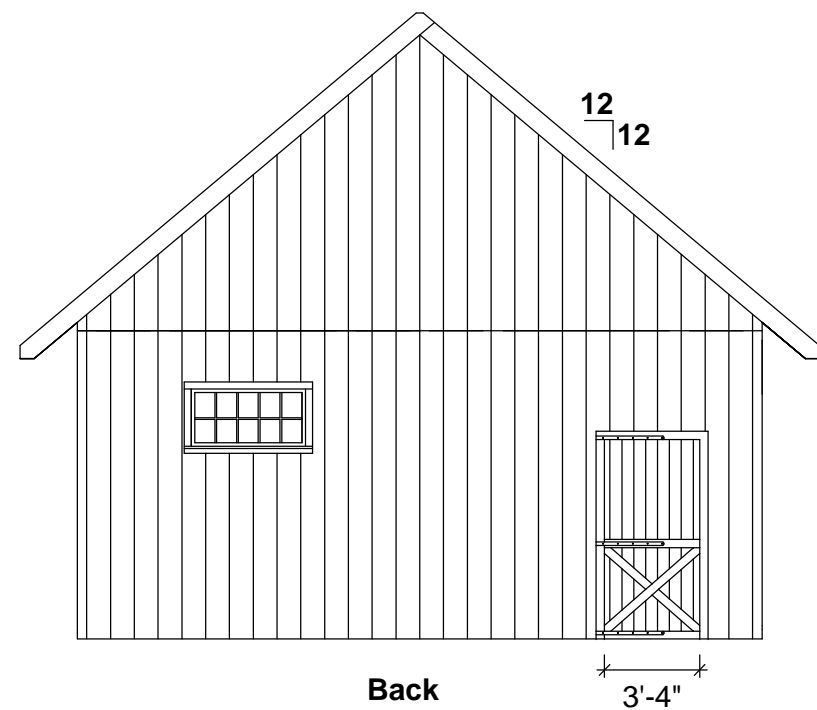
DRAWING INFO:
Rendering

DRAWING No. 000
PRINTED: 07-03-2016



Sample Elevations:

Do Not Scale



COPYRIGHT LAWS PROHIBIT REPRODUCTION OR USE OF THIS DRAWING, IN WHOLE OR IN PART, WITHOUT THE EXPRESSED WRITTEN PERMISSION OF CONNECTICUT POST AND BEAM, LLC.

DO NOT SCALE DIMENSIONS ON THESE DRAWINGS. THESE IMAGES ARE MACHINE REPRODUCTIONS AND MAY CONTAIN A MARGIN OF ERROR.



24' x 48'

Revisions:
22-01-2016

DRAWING INFO:
Sample Elevations

DRAWING No. 001
PRINTED: 07-03-2016

Timber List

Wood Type	Part	Pcs.	W[in]	H[in]	L[ft]	Volume[BF]
SPF 2&BTR	PB1	6	8	12	12'	576
SPF 2&BTR	SC4	1	3	8	1'-2 1/2"	2
SPF 2&BTR	SC1	5	3	8	11'	110
SPF 2&BTR	SC1	2	3	8	11'-4"	45
SPF 2&BTR	PB2	6	8	12	12'	576
SPF 2&BTR	SC5	1	3	8	4'-10 1/2"	10
SPF 2&BTR	SC6	2	3	8	6"	2
SPF 2&BTR	RP1	22	2	6	6'	132
SPF 2&BTR	FR1	8	2	4	20'-1 1/2"	107
SPF 2&BTR	FRB1	44	2	4	1'-8"	49
SPF 2&BTR	R2	4	6	8	20'-1 1/2"	322
SPF 2&BTR	R1	22	4	8	20'-1 1/2"	1181
SPF 2&BTR	RP1	44	2	6	16'	704
SPF 2&BTR	RP1	22	2	6	14'	308
SPF 2&BTR	SR1	1	6	12	15'	90
SPF 2&BTR	SR2	2	6	12	12'	144
SPF 2&BTR	SR3	1	6	12	12'	72
SPF 2&BTR	TB1	4	6	8	12'	192
SPF 2&BTR	CT1	1	6	10	5'-1 1/8"	25
SPF 2&BTR	J1	15	6	8	12'	720
SPF 2&BTR	J1-2	3	6	8	12'	144
SPF 2&BTR	J1-3	3	6	8	12'	144
SPF 2&BTR	J3	1	6	8	3'-5 1/8"	14
SPF 2&BTR	J2	1	6	8	7'-8"	31
SPF 2&BTR	J4	2	4	8	8'-6 11/16"	46
SPF 2&BTR	J5	1	4	8	5'	13
SPF 2&BTR	J7	1	4	8	3'-8"	10
SPF 2&BTR	J6	2	4	8	11'-3 11/16"	60
TSW	PTS1	6	2	8	16'	129
TSW	PTS2	1	2	8	1'-8 1/2"	2
TSW	PTS3	1	2	8	7'	9
TSW	PTS4	1	2	8	1'-1/2"	1
TSW	PTS5	1	2	8	17'-1/2"	23
TSW	PTS6	1	2	8	1'-8 1/2"	2
SPF 2&BTR	P5	2	6	6	9'-1/4"	54

Wood Type	Part	Pcs.	W[in]	H[in]	L[ft]	Volume[BF]
SPF 2&BTR	P6	1	6	6	3'-2 1/8"	10
SPF 2&BTR	P1	6	8	8	9'-10 15/16"	317
SPF 2&BTR	P7	3	6	6	10'-8 1/8"	96
SPF 2&BTR	P2	6	8	8	9'-10 15/16"	317
SPF 2&BTR	P3	3	8	8	11'-10 15/16"	191
SPF 2&BTR	P4	1	6	8	11'-11 1/8"	48
SPF 2&BTR	P8	1	6	6	10'-8 1/8"	32
SPF 2&BTR	DB1	2	6	8	8'-11 1/8"	71
SPF 2&BTR	DB2	1	6	8	10'-11 1/8"	44
SPF 2&BTR	SC2	1	3	8	11'-4"	23
SPF 2&BTR	SC3	1	3	8	11'-4"	23
SPF 2&BTR	SC7	1	3	8	4'-10 1/2"	10
SPF 2&BTR	SC8	1	3	8	1'-2 1/2"	2
SPF 2&BTR	KB1	58	5.5	5.5	3'-8"	638
SPF 2&BTR	SN	2	5.5	5.5	1'-1 5/8"	7
SPF 2&BTR	SN	12	5.5	5.5	10'-11 1/8"	393
SPF 2&BTR	SN	4	5.5	5.5	7'-2 1/2"	88
SPF 2&BTR	SN	2	5.5	5.5	4'-10 1/4"	30
SPF 2&BTR	SN	2	5.5	5.5	4'-9 5/8"	29
SPF 2&BTR	SN	18	5.5	5.5	2'-6 1/4"	136
SPF 2&BTR	SN	8	5.5	5.5	11'-3 1/8"	270
SPF 2&BTR	SN	1	5.5	5.5	7'-6 1/4"	23
SPF 2&BTR	SN	1	5.5	5.5	7'-7 1/4"	23

Part Abbreviation	Item
PB	Plate Beam
SC	Sill Cover
KB	Knee Brace
RP	Roof Purlin
FR	Fly Rafter
FRB	Fly Rafter Blocking
R	Rafter
SR	Structural Ridge
TB	Tie Beam
CT	Collar Tie
J1	Joist
PTS	Pressure Treated Sill
P	Post
SN	Siding Nailer
DB	Door Buck

Connectors:

Order #	Pieces	Screws	Pins
CR8080	15	90- 5" Caliburn	30- 8"
CR8080	6	36- 5 1/8" GRK RSS	12- 8"
CR83W	9	54- 5 1/8" GRK RSS	72- 8"
CR6060	9	54- 5 1/8" GRK RSS	18- 6"
CR63W	3	18- 5 1/8" GRK RSS	24- 6"
CR6080	10	60- 5 1/8" GRK RSS	20- 6"
CR6010	2	12- 5 1/8" GRK RSS	6- 6"
CR5555	100	576- 5 1/8" GRK RSS	192- 6"

SPF 2&BTR- Spruce, Pine, Fir #2 or better

TSW- Treated Soft Wood (Pressure Treated Lumber)



COPYRIGHT LAWS PROHIBIT REPRODUCTION OR USE OF THIS DRAWING, IN WHOLE OR IN PART, WITHOUT THE EXPRESSED WRITTEN PERMISSION OF CONNECTICUT POST AND BEAM, LLC.

DO NOT SCALE DIMENSIONS ON THESE DRAWINGS. THESE IMAGES ARE MACHINE REPRODUCTIONS AND MAY CONTAIN A MARGIN OF ERROR.



Revisions:
07-03-2016

DRAWING INFO:
Timber List

DRAWING No. 012
PRINTED: 07-03-2016