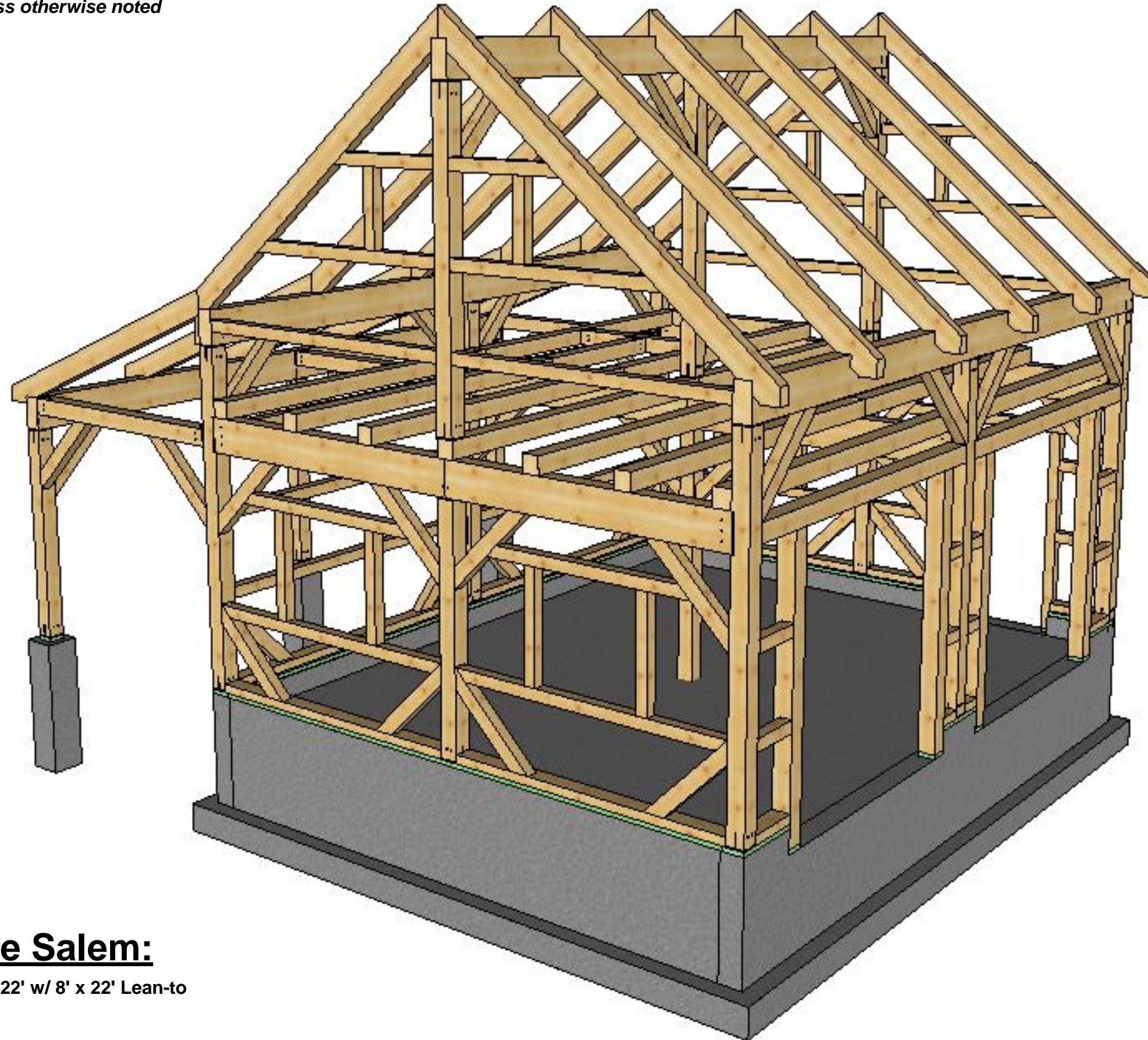


- All timbers will be Eastern White Pine
#2 or better unless otherwise noted



The Salem:

18' x 22' w/ 8' x 22' Lean-to



COPYRIGHT LAWS PROHIBIT REPRODUCTION OR USE OF THIS DRAWING, IN WHOLE OR IN PART, WITHOUT THE EXPRESSED WRITTEN PERMISSION OF CONNECTICUT POST AND BEAM, LLC.

DO NOT SCALE DIMENSIONS ON THESE DRAWINGS. THESE IMAGES ARE MACHINE REPRODUCTIONS AND MAY CONTAIN A MARGIN OF ERROR.

CONNECTICUT
POST & BEAM

18' x 22'

Revisions:
18-04-2014

DRAWING INFO:
Rendering

DRAWING No. 101
PRINTED: 11-03-2015



COPYRIGHT LAWS PROHIBIT REPRODUCTION OR USE OF THIS DRAWING, IN WHOLE OR IN PART, WITHOUT THE EXPRESSED WRITTEN PERMISSION OF CONNECTICUT POST AND BEAM, LLC.

DO NOT SCALE DIMENSIONS ON THESE DRAWINGS. THESE IMAGES ARE MACHINE REPRODUCTIONS AND MAY CONTAIN A MARGIN OF ERROR.

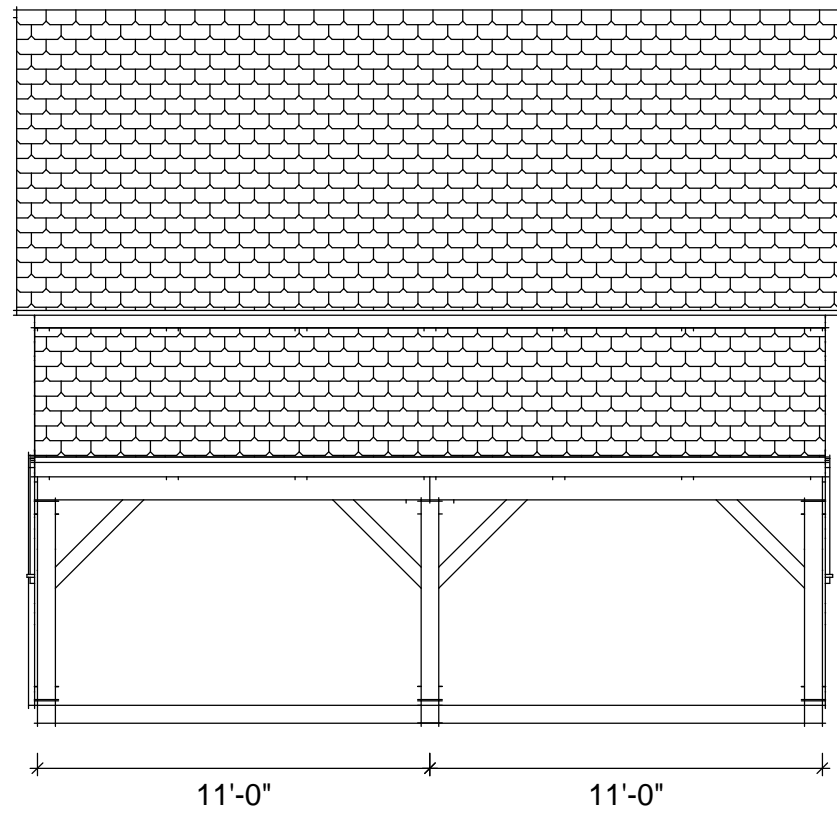
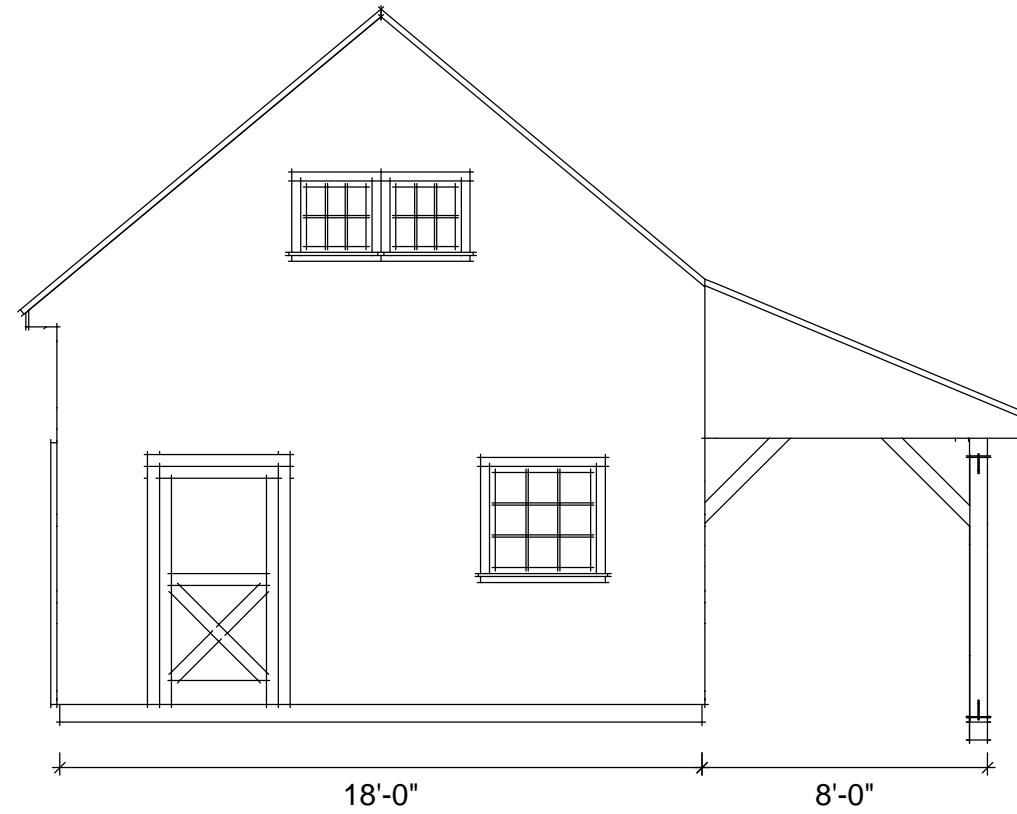
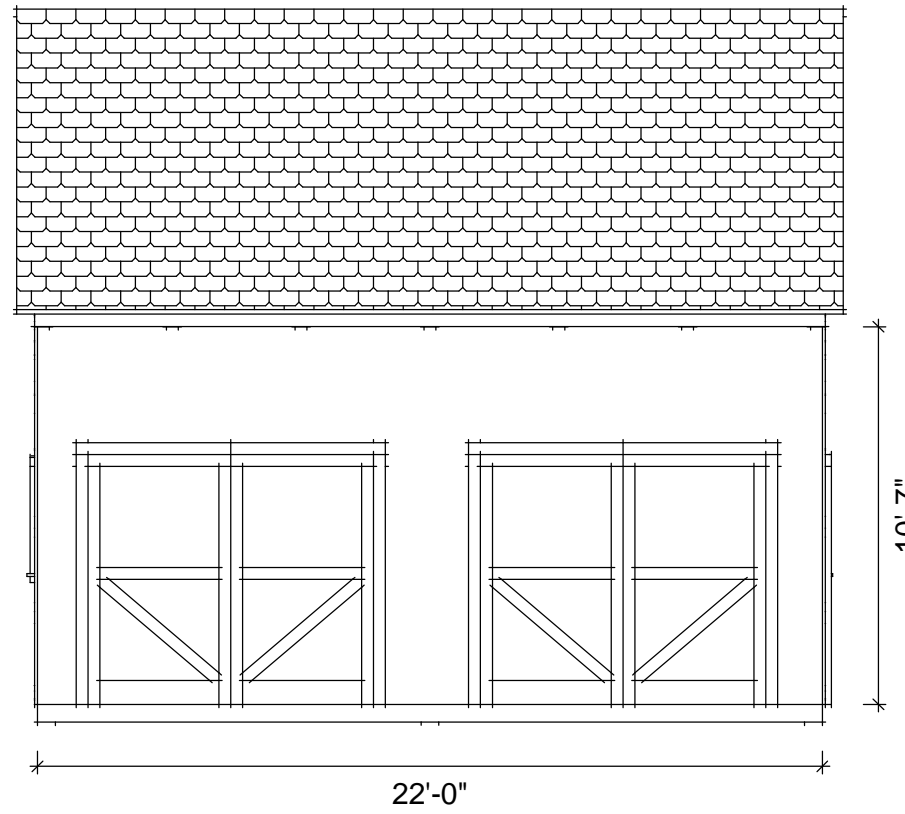


18' x 22'

Revisions:
09-03-2015

DRAWING INFO:
Elevations

DRAWING No. 102
PRINTED: 11-03-2015



Sample Elevations:

Do Not Scale



Timber List

Name	Beam Type	QTY	W "	H "	Length'	Weight
DP1	Eastern White Pine	4	6	6	7'-10 1/2"	376
DP2	Eastern White Pine	2	6	6	10'-3"	248
G1	Eastern White Pine	6	6	12	8'-6 9/16"	1232
J1	Eastern White Pine	13	6	6	11'	1716
J2	Eastern White Pine	1	6	6	4'-11 9/16"	60
J3	Eastern White Pine	1	6	6	4'-11 1/8"	60
J4	Eastern White Pine	1	6	6	5'	60
KB1	Eastern White Pine	44	4	5	3'-4"	776
LB1	Eastern White Pine	1	2	10	22'	148
P1	Eastern White Pine	6	6	6	9'-11 1/8"	720
P2	Eastern White Pine	2	6	6	6'-11 1/8"	168
P3	Eastern White Pine	1	6	6	9'-11 1/8"	120
P4	Eastern White Pine	3	6	6	8'-9 1/4"	316
P5	Eastern White Pine	3	6	6	5'-3 3/4"	192
PB1	Eastern White Pine	3	6	12	22'	1584
PB2	Eastern White Pine	1	6	12	22'	528
PTS1	Treated Soft Wood	3	1.5	7.5	2'	12
PTS2	Treated Soft Wood	1	1.5	7.5	22'	42
PTS3	Treated Soft Wood	1	1.5	7.5	16'-9"	32
PTS4	Treated Soft Wood	1	1.5	7.5	1'-4 1/2"	2
PTS5	Treated Soft Wood	1	1.5	7.5	11'-4 1/2"	22
PTS6	Treated Soft Wood	4	1.5	6	6"	2
PTS7	Treated Soft Wood	2	1.5	4	4"	
PTS8	Treated Soft Wood	3	1.5	6	6"	2
R1	Eastern White Pine	6	4	8	12'-11 5/8"	830
R1-1	Eastern White Pine	6	4	8	12'-11 5/8"	830
R2	Eastern White Pine	6	4	8	9'-5 1/2"	604
SC1	Eastern White Pine	3	3	6	8'-3"	148
SC2	Eastern White Pine	1	3	6	1'-6"	8
SC3	Eastern White Pine	1	3	6	2'-9"	16
SC4	Eastern White Pine	2	3	6	1'-6"	20
SC5	Eastern White Pine	2	3	6	9"	8
SC5	Eastern White Pine	2	3	6	10'-3"	124
SN	Eastern White Pine	4	4	4	9"	16
SN	Eastern White Pine	6	4	4	1'-6"	48
SN	Eastern White Pine	4	4	4	2'-1 1/4"	44
SN	Eastern White Pine	2	4	4	2'-9"	32
SN	Eastern White Pine	6	4	4	3'-1 1/4"	100
SN	Eastern White Pine	4	4	4	3'-4 11/16"	72
SN	Eastern White Pine	1	4	4	5'-9 7/16"	32
SN	Eastern White Pine	3	4	4	6'-1 3/8"	96
SN	Eastern White Pine	4	4	4	6'-3 9/16"	136
SN	Eastern White Pine	2	4	4	6'-6 1/2"	68
SN	Eastern White Pine	7	4	4	8'-3"	308
SN	Eastern White Pine	6	4	4	10'-3"	328
TB1	Eastern White Pine	3	6	6	7'-5 1/8"	268

Timber Tally

Order	PCS.	Volume	Weight
EWP	172	3154	12616
TSW	16	57	114
Total	188	3211	12730
EWP			
2X 10	1	37	148
3X 6	11	81	324
4X 4	49	320	1280
4X 5	44	238	952
4X 8	18	566	2264
6X 6	40	1076	4304
6X 12	10	836	3344
TSW			
1,5X 4	2		
1,5X 6	7	2	4
1,5X 7,5	7	55	110

T-REX Count

ITEM	PCS.
1/2 Aluminum Pins	96
5-1/8 GRK RSS Screw	270
CR36012	6
CR6060	39
Total	411

Timber Definitions:

Abbrv.	Name
DP	Door Post
G	Girder
J	Joist
KB	Knee Brace
P	Post
PB	Plate Beam
PTS	Pressure Treated Sill
R	Rafter
SC	Sill Cover
SN	Siding Nail
TB	Tie Beam



18' x 22'

Revisions:
11-03-2015

DRAWING INFO:
Timber List

DRAWING No. 114
PRINTED: 11-03-2015

COPYRIGHT LAWS PROHIBIT REPRODUCTION OR USE OF THIS DRAWING IN WHOLE OR IN PART, WITHOUT THE EXPRESSED WRITTEN PERMISSION OF CONNECTICUT POST AND BEAM, LLC.

DO NOT SCALE DIMENSIONS ON THESE DRAWINGS. THESE IMAGES ARE MACHINE REPRODUCTIONS AND MAY CONTAIN A MARGIN OF ERROR.

