



COPYRIGHT LAWS PROHIBIT REPRODUCTION OR USE OF THIS DRAWING, IN WHOLE OR IN PART, WITHOUT THE EXPRESSED WRITTEN PERMISSION OF CONNECTICUT POST AND BEAM, LLC.

DO NOT SCALE DIMENSIONS ON THESE DRAWINGS. THESE IMAGES ARE MACHINE REPRODUCTIONS AND MAY CONTAIN A MARGIN OF ERROR.

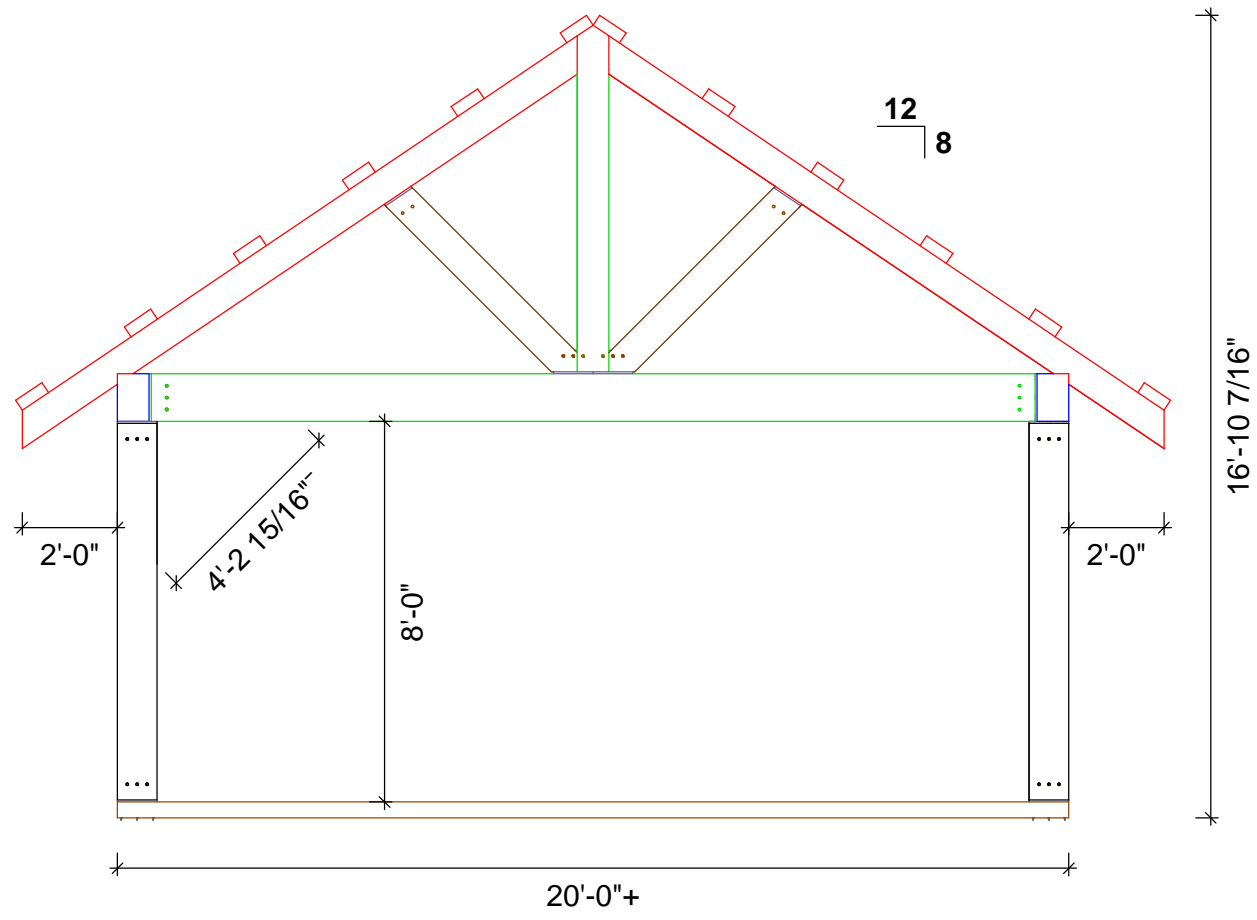


20' x 16' Cabana

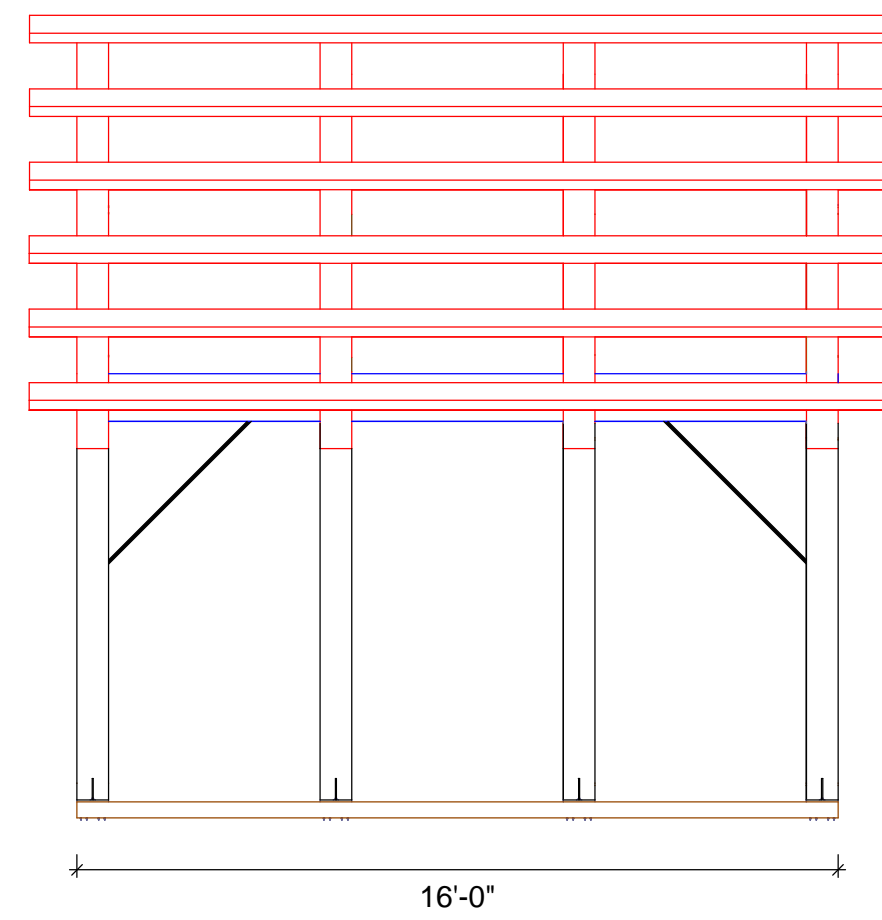
Revisions:
22-05-2016

DRAWING INFO:
Elevations

DRAWING No. 001
PRINTED: 24-05-2016



Front/Back



Right/Left

Elevations:

Scale: 1/4" = 1'-0"

NOTE- See drawing No. 003 for metal angle brace connection

Purlins shall be fastened with (2) 6" GRK RSS wood screws into each rafter

Rafters shall be through bolted to king post using 3/4" galv. threaded rod with nuts and washers at both ends

Rafters shall be fastened to plate beam using (2) 10" GRK RSS wood screws

Angle braces shall be attached using the T-Rex connectors at top and bottom

All T-Rex to wood connections shall be made using 5" GRK RSS wood screws and pinned with 1/2" x 8" aluminum dowels

Vapor barrier shall be used between T-Rex and concrete foundation

All T-Rex shall be fastened to concrete slab using (6) 5 1/8" GRK Caliburn concrete screws

Fastener Details:

Scale: Do Not Scale



COPYRIGHT LAWS PROHIBIT REPRODUCTION OR USE OF THIS DRAWING, IN WHOLE OR IN PART, WITHOUT THE EXPRESSED WRITTEN PERMISSION OF CONNECTICUT POST AND BEAM, LLC.

DO NOT SCALE DIMENSIONS ON THESE DRAWINGS. THESE IMAGES ARE MACHINE REPRODUCTIONS AND MAY CONTAIN A MARGIN OF ERROR.



20' x 16' Cabana

Revisions:
24-05-2016

DRAWING INFO:
Fastener Details

DRAWING No. 006
PRINTED: 24-05-2016



COPYRIGHT LAWS PROHIBIT REPRODUCTION OR USE OF THIS DRAWING, IN WHOLE OR IN PART, WITHOUT THE EXPRESSED WRITTEN PERMISSION OF CONNECTICUT POST AND BEAM, LLC.

DO NOT SCALE DIMENSIONS ON THESE DRAWINGS. THESE IMAGES ARE MACHINE REPRODUCTIONS AND MAY CONTAIN A MARGIN OF ERROR.



Revisions:
24-05-2016

DRAWING INFO:

Timber List

DRAWING No. 014
PRINTED: 24-05-2016

Timber List:

Wood Type	Part Number	Description	QTY	W[in]	H[in]	L[ft]	VOL[BF]
EWP	TB1	Tie Beam	4	8	12	18'-6 15/16"	594
EWP	PB1	Plate Beam	2	8	12	16'	256
EWP	P1	Post	8	8	10	7'-10 15/16"	422
EWP	R1	Rafter	8	8	8	14'-6 1/4"	620
EWP	P2	Post	4	8	8	7'-3 7/16"	155
EWP	AB1	Angle Brace	8	8	8	5'-4 5/16"	229
EWP	RP1	Roof Purlin	12	3	8	18'	432

Connector Count:

Order no.	Pieces[Pcs]
1/2 Aluminum Pins	112
5-1/8 GRK RSS Screw	192
5" GRK Caliburn	48
CR8010	24
CR8012	8
CR8080	8