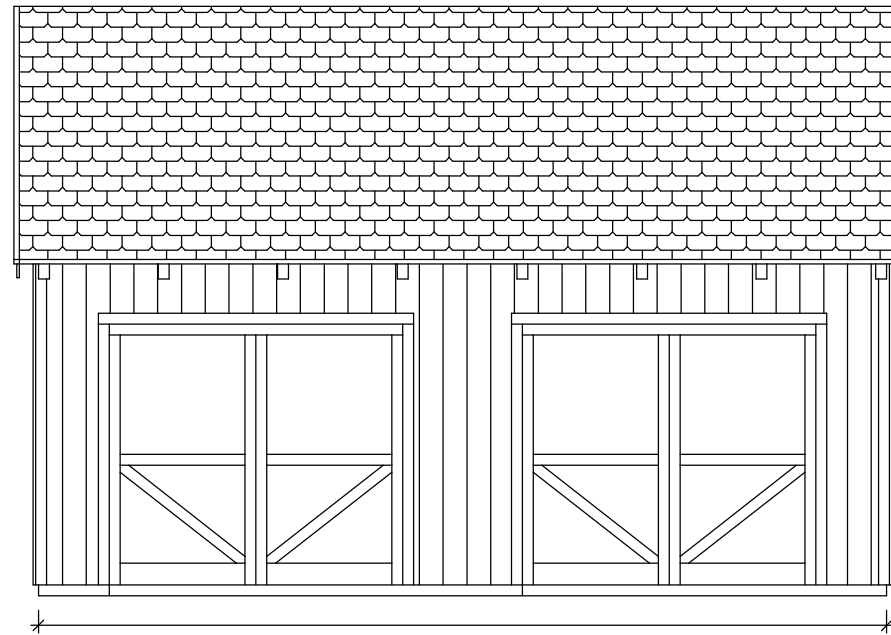
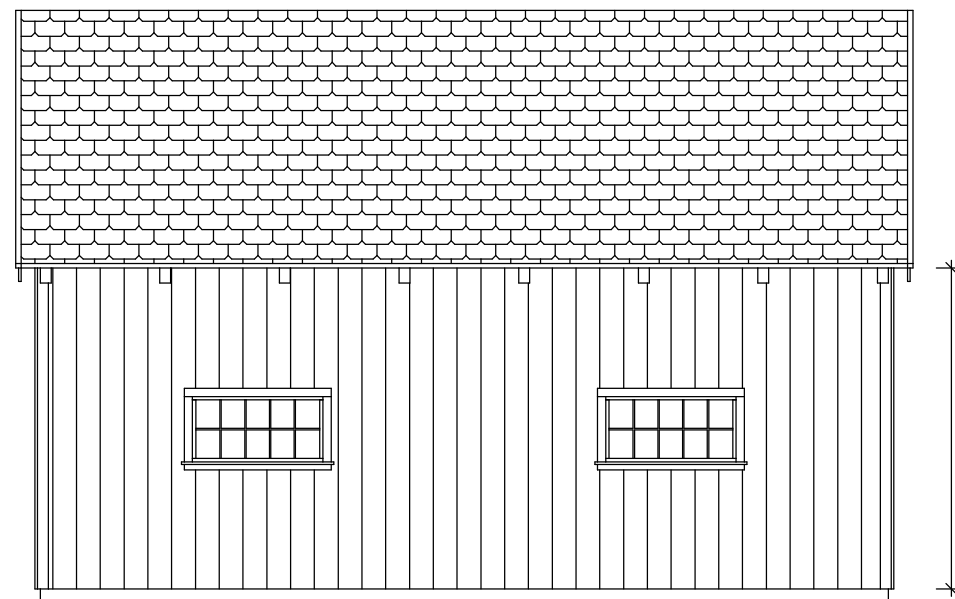


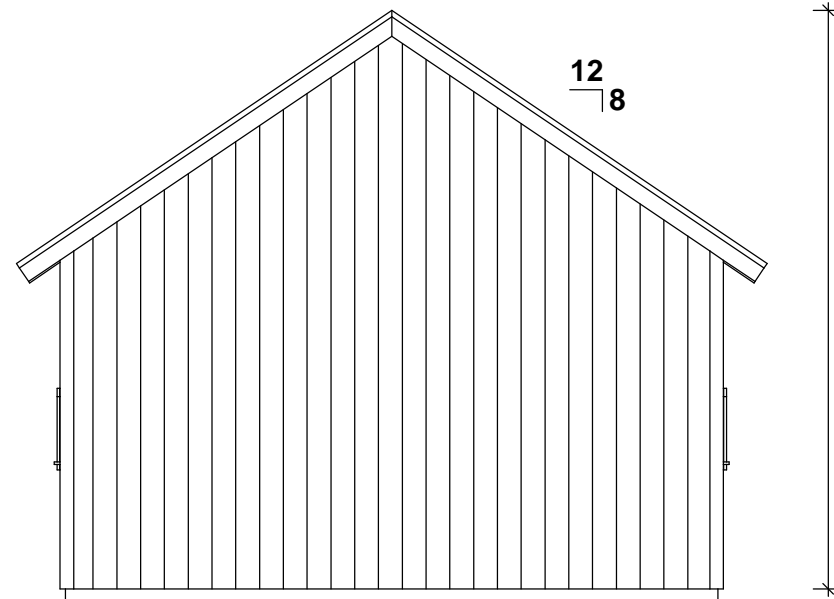
20'-0"  
Front



26'-0"  
Right



Left



Back

**Sample Elevations:**  
Dot Not Scale



COPYRIGHT LAWS PROHIBIT REPRODUCTION OR USE OF THIS DRAWING, IN WHOLE OR IN PART, WITHOUT THE EXPRESSED WRITTEN PERMISSION OF CONNECTICUT POST AND BEAM, LLC.

DO NOT SCALE DIMENSIONS ON THESE DRAWINGS. THESE IMAGES ARE MACHINE REPRODUCTIONS AND MAY CONTAIN A MARGIN OF ERROR.



20' x 26'

Revisions:  
26-10-2016

DRAWING INFO:  
Elevations

DRAWING No. 001  
PRINTED: 26-10-2016

## Timber List:

Wood Type	Beam-Name	Definition	Pcs.	width[in]	height[in]	length[ft]	Volume[BF]
EWP	SC1	Sill Cover	4	3	8	1'	8
EWP	SC3	Sill Cover	1	3	8	2'-10"	6
EWP	SC2	Sill Cover	2	3	8	9'	36
EWP	SC1	Sill Cover	2	3	8	12'	48
EWP	SC3	Sill Cover	1	3	8	12'	24
EWP	RB1	Ridge Beam	2	3	12	13'	78
EWP	SN	Siding Nailer	12	4	4	1'	16
EWP	SN	Siding Nailer	3	4	4	2'-10"	12
EWP	SN1	Siding Nailer	1	4	4	3'-2"	4
EWP	SN	Siding Nailer	4	4	4	3'-6 3/4"	19
EWP	SN	Siding Nailer	4	4	4	3'-7 7/8"	19
EWP	SN	Siding Nailer	4	4	4	4'-1/4"	21
EWP	SN	Siding Nailer	2	4	4	6'-1 3/4"	16
EWP	SN	Siding Nailer	2	4	4	9'	24
EWP	SN	Siding Nailer	4	4	4	9'	48
EWP	SN1	Siding Nailer	2	4	4	9'	24
EWP	SN	Siding Nailer	3	4	4	12'	48
EWP	SN	Siding Nailer	4	4	4	12'-	64
EWP	SN	Siding Nailer	2	4	4	13'-13/16"	35
EWP	KB1	Knee Brace	16	4	6	3'-8"	120
EWP	R1	Rafter	16	4	10	13'-7 3/8"	726
EWP	CT1	Collar Tie	5	4	10	20'	333
EWP	DB1	Door Buck	4	6	8	9'	144
EWP	DH2	Door Header	2	6	8	9'	72
EWP	P1	Post	5	8	8	8'-10 15/16"	238
EWP	P2	Post	2	8	8	8'-10 15/16"	95
EWP	PB1	Plate Beam	4	8	12	13'	416
EWP	TB1	Tie Beam	2	8	12	18'-6 15/16"	298
PT	PTS1	Pressure Treated Sill	2	2	8	2'-2"	6
PT	PTS5	Pressure Treated Sill	1	2	8	2'-9"	4
PT	PTS3	Pressure Treated Sill	1	2	8	3'-2 1/2"	4
PT	PTS2	Pressure Treated Sill	1	2	8	3'-8"	5
PT	PTS6	Pressure Treated Sill	1	2	8	10'	13
PT	PTS4	Pressure Treated Sill	1	2	8	12'-4 1/2"	17
PT	PTS7	Pressure Treated Sill	2	2	8	16'	43

Wood Type	Volume[BF]
EWP	2897
PT	92
<b>Total</b>	<b>2989</b>

**EWP- Eastern White Pine**

**PT- Pressure Treated**

## Fastener List:

ITEM	Pieces
CR8080	12
CR8012	4
CR83W	2
5" GRK Caliburn Screws	42
5" GRK RSS Wood Screws	66
1/2" x 8" Aluminum Pins	24

## NOTES:



COPYRIGHT LAWS PROHIBIT REPRODUCTION OR USE OF THIS DRAWING, IN WHOLE OR IN PART, WITHOUT THE EXPRESSED WRITTEN PERMISSION OF CONNECTICUT POST AND BEAM, LLC.

DO NOT SCALE DIMENSIONS ON THESE DRAWINGS. THESE IMAGES ARE MACHINE REPRODUCTIONS AND MAY CONTAIN A MARGIN OF ERROR.



Revisions:  
26-10-2016

### DRAWING INFO:

Timber List

DRAWING No. 025  
PRINTED: 26-10-2016