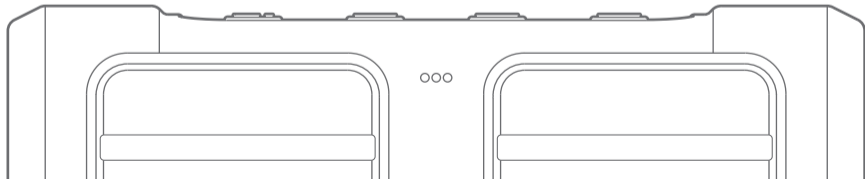




Titus
AUDIO

User Manual

Power Boom 15 Bluetooth speaker



Dear valued customer,

Thank you for choosing TITUS AUDIO. This product is the result of careful planning, creative design, advanced manufacturing, and rigorous testing. We expect you will enjoy many years of reliable use and outstanding performance. Please take a few moments to read this manual, and be sure to retain this document for future reference.

Happy listening!

Sincerely,
TITUS AUDIO

What's in the box

- Power Boom 15 Bluetooth Speaker
- AC charger
- Micro-USB cable
- 3.5mm stereo audio cable
- User manual
- Warranty card

Note Please contact TITUS AUDIO immediately via email (service@titusaudio.com) for assistance with any missing or damaged items.

Specifications

- 1.5" high definition/efficiency driver x 2
- CSR 8645 Bluetooth® V4.0 with Apt-X
- Weatherproof IPX5 design
- 3.7V 2000mAH Li-ion batteries (up to 8 hours play time)
- Support to HSP V1.6, HD Voice, A2DP, AVRCP, mSBC codes
- Noise Cancellation
- Advanced DSP for excellent audio

Meet your Power Boom 15

Controls

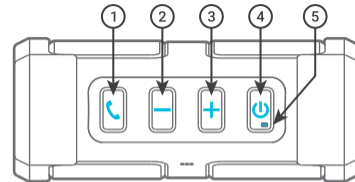
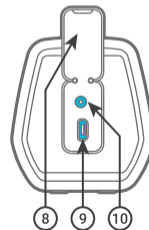
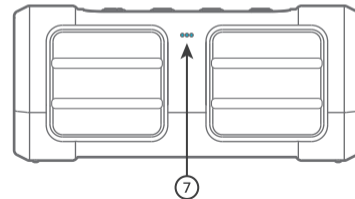
- ① **Phone/pause key**
- ② **Volume down:** short push
Pre-track: Long push
- ③ **Volume up:** short push
Next-track: long push
- ④ **Power On/Off key**
- ⑤ **Status LED indicator**

Others

- ⑥ **D-ring**
- ⑦ **Microphone**
- ⑧ **Dust cover**

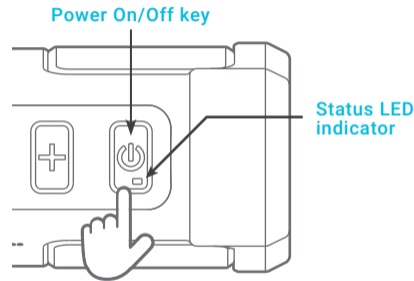
Connectors

- ⑨ **Micro USB port**
- ⑩ **AUX in stereo input**



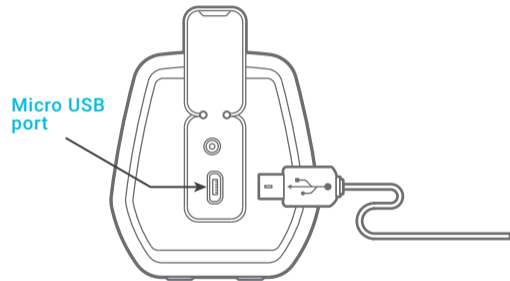
Start up

Press the **Power On/Off key** for 5 seconds. After the beeping sound, the **Status LED indicator** will light **blue** and flash slowly. Power Boom 15 now is ready to connect with your music devices.



Charge it up

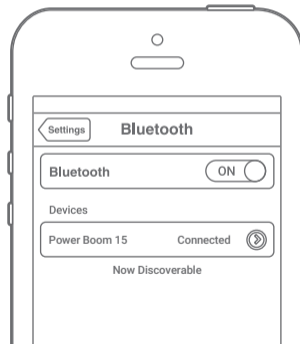
Connect your Power Boom 15 to the AC charger (provided) or computer through the micro USB cable (provided). During charging, the **Status LED indicator** lights **red**, and will be off as the charging completes. This process takes about 2-4 hours depending on electrical conditions.



Let's play music

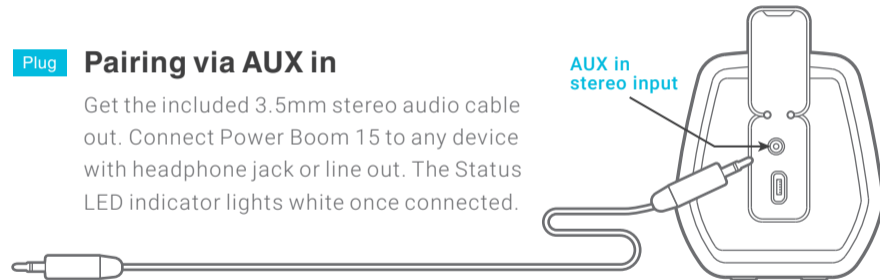
Pair **Pairing via Bluetooth®**

Go to the Bluetooth setting on your music device. Search and select "Power Boom 15" to connect. Enter "0000" if your device asks for a passcode. The blue Status LED indicator will stop flashing once paired.



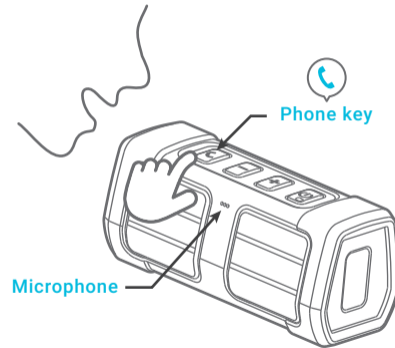
Plug **Pairing via AUX in**

Get the included 3.5mm stereo audio cable out. Connect Power Boom 15 to any device with headphone jack or line out. The Status LED indicator lights white once connected.



Speakerphone

Power Boom 15 can be used as a portable speakerphone via Bluetooth wireless connection. To answer/end a phone, press the Phone key. Speak toward the microphone as speaking. To adjust the volume, press the Volume keys.



Troubleshooting

Ensure your Power Boom 15 is fully charged.

Turn Power Boom 15 off, restart it and retry the pairing procedure.

Ensure your Bluetooth device is enabled.

Move Power Boom 15 closer to your Bluetooth device and retry pairing again.

Try connecting with a different Bluetooth device.

Power Boom 15 will not be able to pair if currently paired to a device. Try unpairing with other devices then try the pairing procedure again.

Power Boom 15 will not be able to pair if already connected with audio cable -It is considered prior to the system.

Power Boom 15 will not be able to pair if it is not charged.

Product/technical support

For more information of products or TITUS AUDIO, please visit:

[🏠 www.titusaudio.com](http://www.titusaudio.com)

If additional service seems necessary, please initially contact the dealer from whom you purchased the product. If it is not possible, contact us directly:

[✉ service@titusaudio.com](mailto:service@titusaudio.com)

[📍 13503 Vintage Place, Suite B, Chino, CA 91710](#)



Fire and electric shock hazard

- As with any electronic products, use care not to spill liquids into any part of this apparatus. Liquids can cause a failure and/or a fire hazard.
- Do not leave the apparatus near open flame sources such as candles, cooking burners, or fireplaces.
- Do not drop, disassemble, open, crush, bend, deform, puncture, shred, microwave, incinerate, paint, or insert foreign object in to this apparatus.
- Do not attempt to service the apparatus yourself.
- Do not short-circuit batteries.
- Clean the apparatus only with a dry cloth.
- Do not expose this apparatus to extremely high or low temperature.
- Do not leave the apparatus in direct sunlight for a long period of time.

Battery/charging hazard

- Only charge the battery in accordance with the user instructions supplied with this guide.
- To reduce the risk of fire or electric shock, do not expose the apparatus to rain or moisture while charging.
- The apparatus should not be exposed to dripping or splashing; and objects filled with liquids, such as vases, should not be placed on or near it while being charged.
- Do not continue charging the battery if it does not reach full charge within the specified charging time. Overcharging may cause the battery to become hot, rupture, or ignite.
- Do not charge the apparatus in damp areas or in extremely high or low temperatures because this could result in electric shock.

Automobile accident hazard

- Do not leave or store this apparatus or any of its accessories near or over your automobile's air bag because serious injury may result when an air bag deploys.

Fall hazard

- Do not place the apparatus on high surfaces such as shelves. During music playback the apparatus may move which could cause the apparatus to shift and fall off the edge.

choking hazard

- This product contains small parts which may be a choking hazard. Not suitable for children under age 3.



CAUTION

Safety precaution

- Note that this apparatus only can be connected through Bluetooth and 3.5mm stereo audio cable.
- Do not use abrasive cleaner to clean the apparatus because this could cause scratches and damage.
- Do not bring the apparatus in to contact with any sharp objects because this could cause scratches and damage.
- Do not insert anything into the apparatus, unless otherwise specified in the user instructions. This may damage the internal components.
- Do not attempt to repair, modify, or disassemble the apparatus yourself, it does not contain any user-serviceable components.
- Do not attempt to replace the apparatus battery, it is built-in and is not changeable.
- Using the manufacturer supplied charger to charge the apparatus is recommended. Other chargers may look similar, but using them may result in electronic shock and damage the apparatus.
- Do not exert force hard on the dust cover. This could lead to the shape deformation of cover.
- Observe all signs and displays that require an electrical device or RF radio product to be switched off in designated areas.
- Turn off the apparatus prior to boarding an aircraft. Do not use the apparatus inside an aircraft unless allowed by your airline.
- Dispose of the this apparatus and its batteries in accordance with local regulations. Do not dispose of batteries with regular household waste.
- Do not use unstable accessories with D-ring of this apparatus. The damage of accessories could cause the apparatus to fall from height.
- Do not attach overweight objects on the D-ring of the apparatus. This may damage the D-ring.

FCC Statement

This equipment has been tested and found to comply with limits for a class B digital device, pursuant to Part 15 of the FCC Rules. These limits are designed to provide reasonable protection against harmful interference in a residential installation. This equipment generates, uses, and can radiate radio frequency energy and, if not installed and used in accordance with the instructions, may cause harmful interference to radio communications. However, there is no guarantee that interference will not occur in particular installations. If this equipment does cause harmful interference to radio or television reception, which can be determined by turning the equipment off and on, the user is encouraged to try to correct the interference by one of the following measures:

- Reorient or relocate the receiving antenna.
- Increase the separation between the equipment and receiver.
- Connect the equipment into an outlet on a circuit different from that to which the receiver is connected.
- Consult the dealer or an experienced radio/TV technician for help.

FCC NOTICE

This device complies with Part 15 of the FCC Rules. Operation is subject to the following two conditions:

1. This device may not cause harmful interference, and
2. This device must accept any interference received, including interference that may cause undesired operation.

FCC CAUTION

- Any changes or modifications not expressly approved by the party responsible for compliance could void the user's authority to operate this equipment.
- This device and its antenna(S) must not be co-located or operating in conjunction with any other antenna or transmitter.



SYO-Power Boom 15 Bluetooth Speaker



This product complies with the CE directive. All returns must be made to the original place of purchase.



This symbol indicates that this product should not be disposed with other household wastes throughout the EU.