

Centaurea diffusa

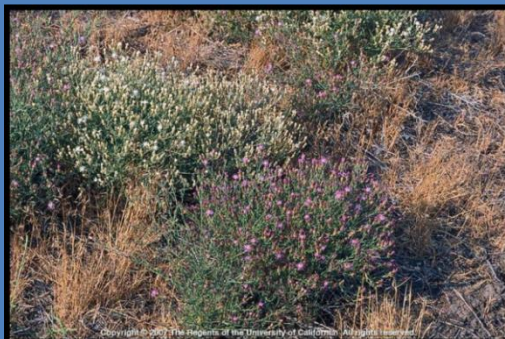
Diffuse Knapweed

Other common names:

tumble knapweed, bushy knapweed

Asteraceae, the sunflower family

Category: CONTAINMENT



Diagnostic Characteristics

- Bushy biennial; can grow up to 3 feet tall
- Basal rosettes exist until flowering stems are produced
- Leaves alternate
- Lower stem leaves deeply 1- or 2-pinnate-lobed
- Upper leaves entire, linear, or bract-like
- Flower heads are slender, urn-shaped, solitary, or in clusters of 2-3 at the ends of the branches
- Flower heads consist of white to purple disc flowers interspersed with long bristles on the receptacle; bracts below flower have yellow spines with comb-like teeth along the spine margins

Background

- Native to Eurasia
- Inhabits rangelands, sandy river shores, gravel banks, rock outcrops, pastures, non-crop areas, and rights-of-way
- Reproduces by seed; stems break off and tumble in the wind
- Can form large, dense stands

Photo Credit:

J.M. DiTomaso, The Regents of the University of California

Diffuse Knapweed

Centaurea diffusa

