

FROM HERE TO

Eternity

KEEP IT CLASSIC WITH WEDDING-DAY DÉCOR THAT
EVOKES SOMETHING OLD, SOMETHING NEW
AND A WHOLE LOT OF BLUE.

BY
MEGAN McCARTY
PHOTOGRAPHY
AMANDA NIPPOLDT
PHOTOGRAPHY



(OPPOSITE PAGE)
Welcome your wedding guests in style with these hexagonal Carrara marble tiles used as place cards, hand-lettered by Lovely Letter Design Co.

(THIS PAGE)
Ashley Ebert, owner of new luxury wedding planning company La vie Charmé by Simply Elegant, is keen on designing refined receptions like this. "We specialize in artful, unique and classically beautiful events," she says. "We are a young, polished creative team, and we love to infuse that into our work."



(a)



(b)

COORDINATION:
La vie Charmé by Simply Elegant

VENUE: *The Machine Shop*

STYLING: *MaeMae & Co.*

FLOWERS: *Poppy Lane*

CAKE: *Cocoa & Fig*

STATIONERY: *Jill Elaine Designs*

CALLIGRAPHY:
Lovely Letter Design Co.

LINENS: *Linen Effects*

RENTALS:
Après Party & Tent Rental

HAND-DYED RIBBON:
Shasta Bell Calligraphy

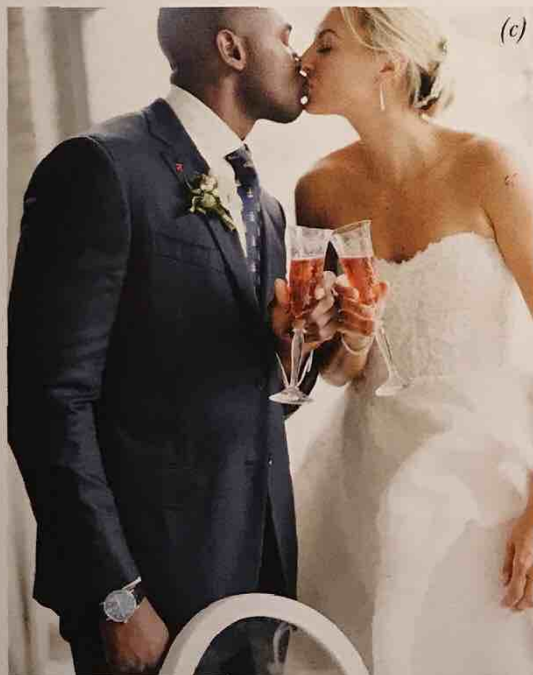
DRESS:
*Monique Lhuillier
from L'Atelier Couture*

JEWELRY: *JB Hudson Jewelers*

MENSWEAR: *MartinPatrick3*

HAIR: *Swept Up*

MAKEUP: *Tina Beaupre*



(c)



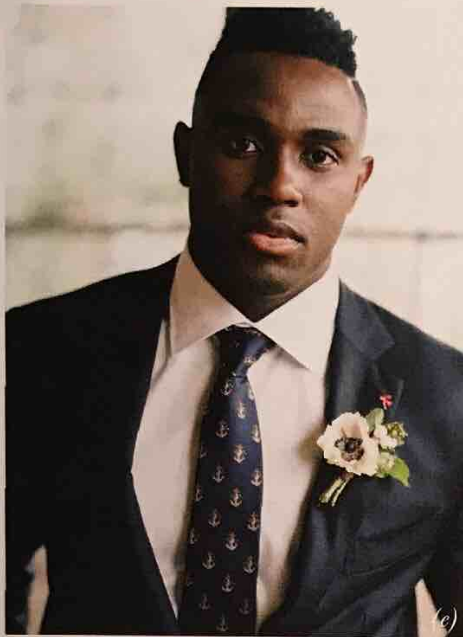
(d)

(a) Diamonds may not be a girl's very best friend, but they definitely up the allure of a wedding-day ensemble. This set—teardrop earrings and pendant from JB Hudson Jewelers—pairs perfectly with upswept hair and a strapless gown.

(b) Menswear mecca MartinPatrick3, tucked in the North Loop of Minneapolis, is a must-stop for any groom. In addition to housing a high-end barber shop, MP3 carries all sorts of accessories for the big day and beyond, such as these lion-head cufflinks and ultra-chic watch.

(c) During such a whirlwind day, be sure to raise a glass to your new marriage with a private toast—just the two of you. (May we suggest sparkling rosé?)

(d) This menu was made to whet your guests' appetites. Jill Elaine Designs etched the details of the reception dinner on acrylic rectangles, placed on an extra-elegant navy satin napkin.



(e)



(g)



(f)



(h)

(e) Crisp white shirt? Check. Sleek navy suit? Double-check. Sophisticated but not stuffy tie? Got that too. Now make your mister's entire ensemble pop with an unexpected boutonniere. This one pairs anemone and winterberry with nigella pods, all wrapped with wire.

(f) Florist Ally Bauerfeld of Poppy Lane arranges garden roses, anemones, ranunculus, jasmine vine and more for a bridal bouquet that's pure beauty, bursting with classic colors and surprising textures.

(g) Industrial spaces like the Machine Shop offer a historic feel and one-of-a-kind architectural details, but don't let their airy nature overwhelm you. "Since the Machine Shop is such a dynamic space, we wanted to showcase how you can truly transform every inch of it to fit your personal style as a couple," says Ebert.

(h) This creative cake by Cocoa & Fig features tiers of varying heights (key to keeping visual interest) in a sleek marble design. It's almost—almost—too pretty to eat. ✕