



LUX Photonics Consortium



**LUX Photonics Consortium Industry-IHL
Collaboration Seed Grant**

Funding Scheme Framework & FAQ

[Objective](#)

[Eligibility](#)

[Technology
Area](#)

[Fund
Quantum](#)

[Frequency
of Call](#)

[Apply/Review
Process Flow](#)

[Review
Panel](#)

[Evaluation
Criteria](#)

[IP Rights
\(FIP\)](#)

[Progress
Review](#)

[Post Project
Report](#)

[FAQ](#)

Objectives of the Grant

- Promote adoption of IHL innovative technology/IP by companies through jointly supporting a feasibility or small-scope* collaborative project
- Support feasibility study that could potentially lead to larger scale IHL-Industry collaboration (like project-seeding fund) to adopt the IHL IP into company's product. e.g. design and simulation for optical element, fiber laser, optoelectronic device
- Must support company evaluation of IP from IHL - evaluation license agreement to be signed concurrent with project award:
 - IP generated from CRP: free non-exclusive for up to 3 years
 - IP not generated from CRP: license fee chargeable

*Small-scope: funding quantum of up to \$100K, up to 12-month duration.



- LUX Industry Member: Full Industry Member (not Associate Member)
- including all : MNC, SME, Startup
- There must be collaboration with IHL through a LUX Faculty Member
- LUX Faculty Member to apply for grant as the Principal Investigator (PI) of the project
- There must be plans for IHL IP to be adopted by LUX Industry Member
- IHL and LUX Industry Member must not have received any other government grant funding for the same project scope



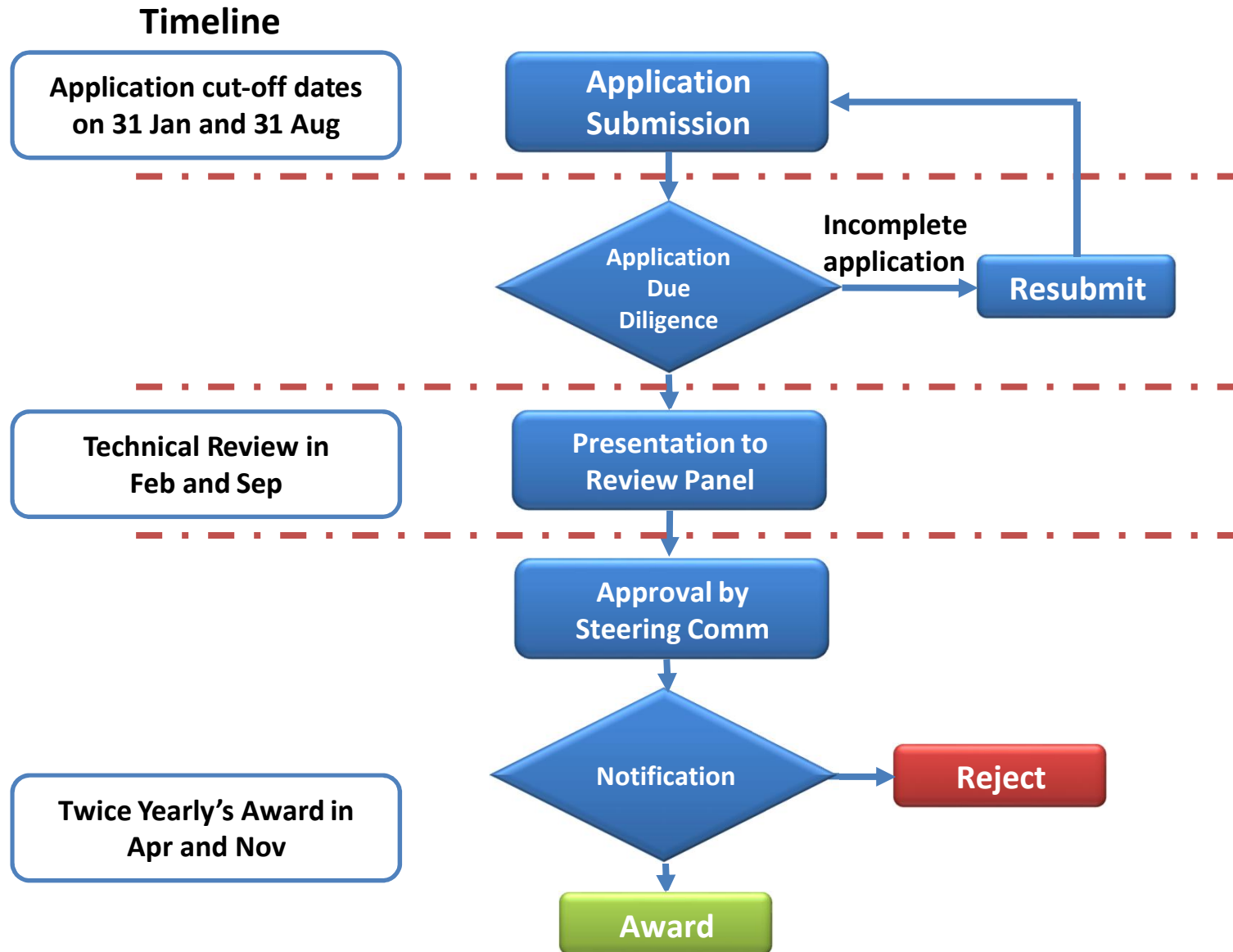
- **Photonics products (component or system)**
e.g. laser, sensor, imaging, inspection scope, optic element, spectroscopy, light source, LED, optoelectronics components, equipment that applied photonic technologies, etc.
- **Photonics technologies and its application for productivity improvement, fabrication, automation, characterization, etc.**



- This public funding will support project cost up to S\$100,000. (IHL overheads / indirect costs not applicable)
- All expenditure for goods and services should be budgeted in project cost, inclusive of any applicable Goods and Services Taxes (GST) at the prevailing rates.
- Co-funding from LUX Industry Member: S\$30,000 in cash and in-kind. Cash contribution from LUX Industry Member will be subjected to prevailing GST rates.
- Project duration: up to 12 months



Application & Selection Process



- Review based on:
 - Submitted proposal (Application Form)
 - Presentation & discussion at review meeting
- Principal Investigator(PI) and Industry Collaborator are to present to Review Panel
- Review Panel will recommend selected projects to Steering Committee for approval.



Frequency of Call

- Open throughout the year
- Award 2 times per year (April & November)
- Two cut-off dates 31-Jan and 31-August
- Review Meeting in February & September
- Each review cycle is 8 weeks from convening of the review panel to award notification



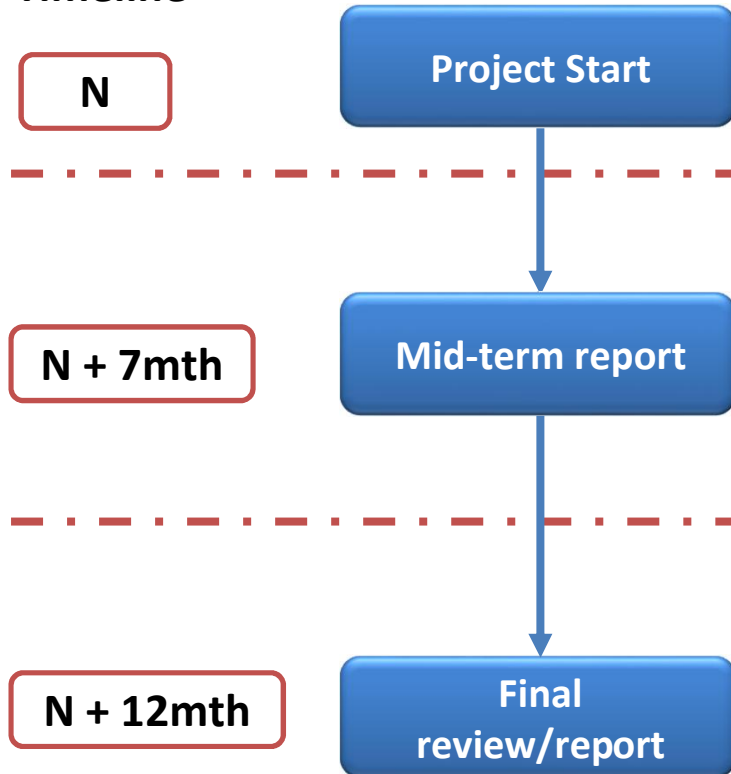
Evaluation Criteria

Criteria	Guiding Questions
Problem Statement	<ul style="list-style-type: none"> • Does the problem identified have critical impact to product or technology advancement? • Does solving the problem help to define or support a follow-on larger scale industry collaboration?
Solution & Novelty	<ul style="list-style-type: none"> • Must have plans for IHL IP adoption and commercialization • Does the project address an important scope of the technology development roadmap or productization plan? • Is the proposed approach unique, innovative and novel?
Project Scope	<ul style="list-style-type: none"> • Does the project fit the scope and time frame? • Do the proposed deliverables and milestones commensurate with the expected impact and objectives? • Does the expected impact and/or deliverables of the project commensurate with the requested funding?



Progress Review Process

Timeline



Fund Reimbursement by PI at IHL:

- Every 6 months
- If project > 6 months; mid-term report is required along with reimbursement submission

2 page report on:

- Current status
- Any issue?

Skipped if project is 6 months duration or less

Possible Outcomes/Future Development:

- Industry collaboration (> 1 year)
- Pipeline for IAF, GAP, etc.
- IP Licensing



- Background IP (BIP) continues to belong to each owner (IHL or LUX Industry Member) who brings the BIP into the project
- Foreground IP (FIP) generated:
 - Any improvements or modifications to a party's BIP will be owned by such party
 - Ownership and management of any jointly-developed FIP which are not improvements or modifications to a party's BIP to be discussed on case-by-case basis and set out in the research collaboration agreement (RCA) between the IHL and LUX Industry Member



- Deliverables met
(feasibility/design checked, etc.)
- Any IP or know-how generated?
- Future plans (next phase of project, follow-on funding required?)



Q1: Who can apply?

All LUX Faculty members and Full Industry Members (not Associate members) can apply.

Q2: I am currently not a LUX Faculty member or Industry member, how can I apply LUX membership?

Please contact Choi Pheng (choipheng.soo@ntuitive.sg) or Kim Hai (khsim@ntu.edu.sg) for membership application.

Q3: I am currently an Associate Industry member, am I eligible?

No. LUX Associate Industry member has to convert to Full Industry member in order to be eligible to apply.

Q4: How to convert to LUX Full Industry member from Associate member?

Associate member need to pay an one time entrance fee (either \$10k or \$20k depending on revenue) to convert to Full Industry member. Note: Annual membership subscription fee is still payable.

Q5: I have an industry collaborator who is not a LUX industry member, can I apply for the grant?

No. Faculty member need to collaborate with LUX Full Industry member to be eligible to apply.

Q6: How can I apply?

Submit the duly completed Application Form to LUX_Chairman@ntuitive.sg before the application cut-off dates. Successful applicant will be notified of the review panel meeting.



Q7: Does PI need to include Good and Services Tax (GST) in the project cost?

Yes. PI need to budget in all applicable good and services tax at the prevailing rates for the project cost.

Q8: Does the \$30k co-funding from LUX Industry member include GST?

The co-funding from LUX Industry member is exclusive of GST, and will be subjected to prevailing GST rates.

Q9: When can PI request a project budget account be set up by hosting IHL's Finance Office?

After received award letter, PI has to work with Industry Collaborator to get both the Research Collaboration Agreement (RCA) and IP license agreement on the relevant IP (on the feasibility check/evaluation) signed before the budget account can be set up.

Q10: How is the fund being processed?

The awarded project fund will be reimbursed every 6 months upon submission of reimbursement application from PI.

Q11: When is Mid-term report required?

PI has to submit Mid-term report if project duration is more than 6 months. The Mid-term report is to be submitted along with project fund reimbursement application.



For more information, please contact:

Dr Soo Choi Pheng

Programme Director

Email: choipheng.soo@ntuitive.sg

Mobile: 91198306

Mr Sim Kim Hai

Project Manager

Email: khsim@ntu.edu.sg

Mobile: 98422634