

HWB LED



APPLICATION

Up light and down light with divider for hospital bed light. Acrylic diffuser with metal end caps. Ideal for use in bed light, nursing home light, task light and stairwells areas.

FEATURES:

- High-gloss baked enamel finish over rust inhibiting phosphate coat on die formed cold rolled steel housing. Post powder coated white, black and bare finish.
- Clear prismatic acrylic with ribbed front diffuser; optional clear ribbed up light acrylic diffuser.
- Up light fixture with divider and up light acrylic. Dividers are available for up light and/or down light; four-position pull-switch.
- Emergency battery backup with test switch and indicator light. (4ft only)
- Optional rocker switch, grounded convenience outlet and GFCI.
- Custom modifications to physical specifications and color are available for this fixture.
- Wall mounted.

LED:

- High quality array LEDs.
- LM80
- Color Temperature: 3000/3500/4000/5000 (K)
- Color Rendering Index: > 80 Ra.
- Calculated L70: 122,000 hours
- Reported L70: >54,000 hours

ELECTRICAL:

- High power factor electronic driver, operate from a 120 ~ 277 Vac input range, 50 / 60 Hz.
- Features included over voltage protection, surge, short circuit protection and over load protection.
- Power Factor: typical > 0.95, THD < 20, meets Class1 or Class 2 circuit.
- 0-10V dimmable driver as standard.
- 0-10VDC dimming 10-100%(STD), 1-100%(DM1).
- Minimum starting temperature: -4°F (-20°C) ~ 122°F (50°C).

LISTING:

- UL/CUL listed and labeled.
- Listed to UL 1598 and UL 8750.
- Suitable for damp locations.
- CEC Compliant EM (please contact for more information)
- Made in USA.
- ARRA compliant.
- 7 or 10 years limited warranty. (optional) ⁴

CONFIGURATIONS

Series	LED Watts	Color Temp.	System Lumen	Driver Input
HWB LED	20W	4000K (Std.)	2200 lm	120-227V
	36W		3960 lm	

ORDERING INFORMATION

EXAMPLE: HWB-2-20LED/30-UNV

MODEL	SIZE	LED	COLOR TEMP.	DISTRIBUTION	VOLTAGE	FINISH
HWB	2 2FT	20LED 20W LED	/30 3000K	DN Down light (Std.)	UNV 120-277V	(Blank) White (Std.)
	4 4FT	36LED 36W LED	/35 3500K /40 4000K (Std.) /50 5000K	UP Up light UD Up & Down light	120 120V 277 277V	* Available custom color (RAL). Please provide us with the RAL number.

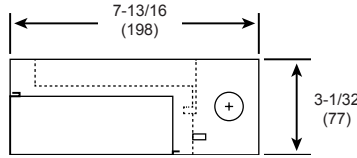
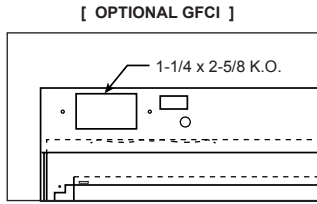
* Contact factory for custom wattage or lumen requirement.

OPTIONS				LIGHTING CONTROL SYSTEM			
EMG5	5W Emergency Ballast (CEC Compliant EM) ¹	PHSR	Philips Xitanium Sensor-Ready, Dali 5%~100% dim.	VRF	<Lutron Vive System Enabled> Vive Integral fixture control (RF only), (Must be ordered with EcoSystem drivers or PHSR)		
EMG8	8W Emergency Ballast (CEC Compliant EM) ¹	PS1	Pull-switch (all lamps) O/F ²	FCJS0	Vive Attached fixture control (RF only for 0-10V drivers)		
EMG16	16W Emergency Ballast (CEC Compliant EM) ¹	PS4	Pull-switch up/down lamps O/F ²	FCJSE	Vive Attached fixture control (RF only for Lutron EcoSystem drivers)		
RS	Rocker Switch	GLR	4-Position (front, rear, all on and all off)	FCJS0EM	UL 924 Emergency PowPak wireless fixture control for 0-10V drivers		
GO	Grounded Outlet ²	GMF	Fast Blow Fuse ³	FCJSEEM	UL 924 Emergency PowPak wireless fixture control for EcoSystem drivers		
GFCI	GFCI Outlet ²	O7W	Slow Blow Fuse ³				
DM1	0-10V 1~100% dim	O10W	Optional 7 Years Limited Warranty ⁴				
LDE5	5-Series EcoSystem LED driver, 100% ~ 5% dim		Optional 10 Years Limited Warranty ⁴				
LDE1	Hi-lume 1% EcoSystem LED driver with Soft-on, Fade-to-Black dimming technology, 100% ~ 1% dim						

NOTES:

1. Contact factory for other emergency ballast options.
2. 120V only.
3. Must specify voltage, not available with 347V.
4. This limited warranty covers electrical parts only and does not apply to labor, equipment lease, or defect from improper installation or operation.

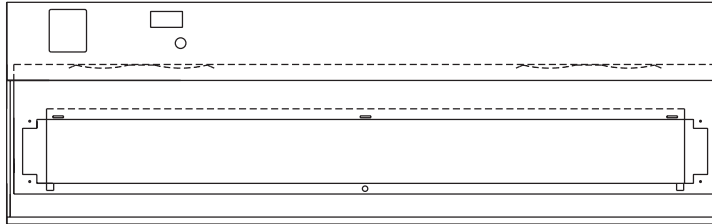
HWB LED



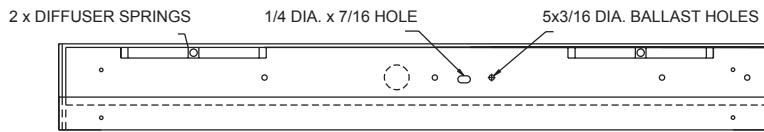
Specifications: HWB LED

Length: 25-1/4 (641)
49-1/4 (1251)
Height: 3-1/32 (77)
Width: 7-13/16 (198)

All dimensions are in inches (millimeters).



TOP VIEW



FRONT VIEW

COMPATIBLE DIMMER SWITCH (TABLE 1)

Model #	Brand	Compatible Dimmer Switch	
(Blank)	-	<Leviton>	IllumaTech IP7 series
		<Lutron>	Visit www.lutron.com/advance for a list of dimmers (Mark VII) that will work with this driver.
		<Philips>	Sunrise : SR1200ZTUNV
ES566	eldoLED SOLOdrive	<Busch-Jaeger>	2112U-101
		<Jung>	240-10
		<Leviton>	IllumaTech - IP710-DLX
		<Lightoller Controls>	ZP600FAM120
		<Merten>	5729
		<Pass & Seymour>	CD4FB-W
		<Wattstopper>	DCLV1
		<Sensor Switch>	nIO EZ
		<Synergy>	ISD BC
		<ABB>	SD/S 2.16.1
		<Lutron>	Nova T: NTFTV Diva - DVTv-xx, NFTV GRAFIK Eye: GRX-TVI w GRX3503 Energy Savr Node: QSN-4T16-S TVM2 Module
<Crestron>	GLX-DIMFLV8, GLXP-DIMFLV8, GLPAC-DIMFLV4-*, GLPAC-DIMFLV8-*, GLPP-DIMFLVEX-PM, GLPP-1DIMFLV2EX-PM, GLPP-1DIMFLV3EX-PM, DIN-AO8, DIN-4DIMFLV4, CLS-EXP-DIMFLV, CLC1-1DIMFLV2EX		
LDE5	Lutron Hi-lume 1% EcoSystem	<Lutron>	PowPak Dimming Modules: RMJ-ECO32-DV-B, FCJ/FCJS-ECO ^{1,2} Energi Savr Node (120V only): QSN-1ECO-S, QSN-2ECO-S GRAFIK Eye QS/Homeworks QS control unit (120V only): QSGRJ- E(wireless) QSGR- E Quantum Hub (120V only): QP2-__2C/4C/6C/8C Homeworks QS/myRoom Plus power module (120V only): LQSE-2ECO-D
LDE1	Lutron 5-Series EcoSystem	<Lutron>	

NOTES:

- All devices connected to one FCJ/FCJS-ECO will be controlled together. Devices will dim to the same level as the result of a control command. For more detail on adjusting low-end light level refer to Application Note#556 at www.lutron.com.
- For the Line/Hot (L/H) terminal on the driver, it is preferred not to use the switched hot (red) wire from the control but rather the hot wire directly from the power source.